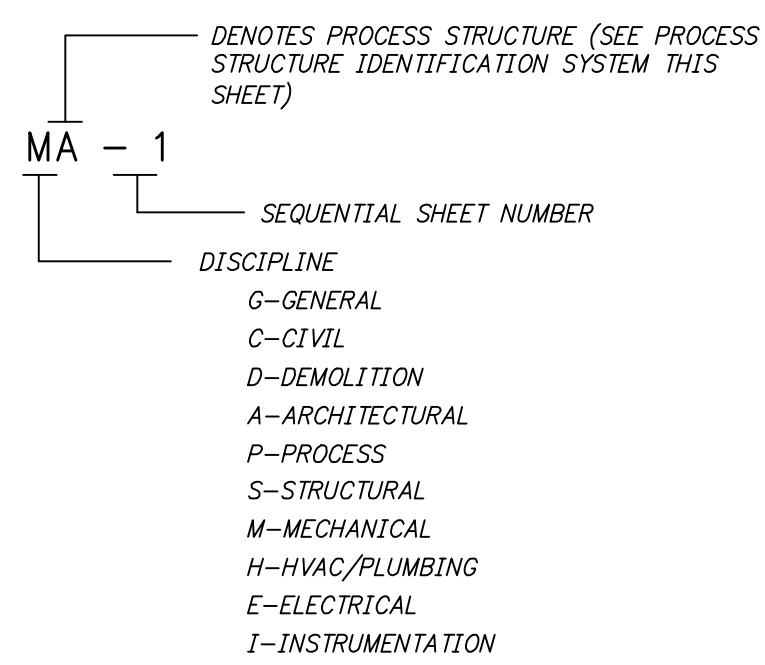


DRAWING IDENTIFICATION SYSTEM



DEPICTED IS MECHANICAL SHEET NO. 1 OF THE THERMAL SLUDGE DRYER BUILDING

PROCESS STRUCTURE/FACILITY IDENTIFICATION

- A THERMAL SLUDGE DRYER BUILDING
- B MAINTENANCE BUILDING
- C SLUDGE MIXING BOX
- D SEPTIC RECEIVING STATION
- E EXISTING DEWATERING AND DRYER BUILDING
- Z STANDARD DETAILS

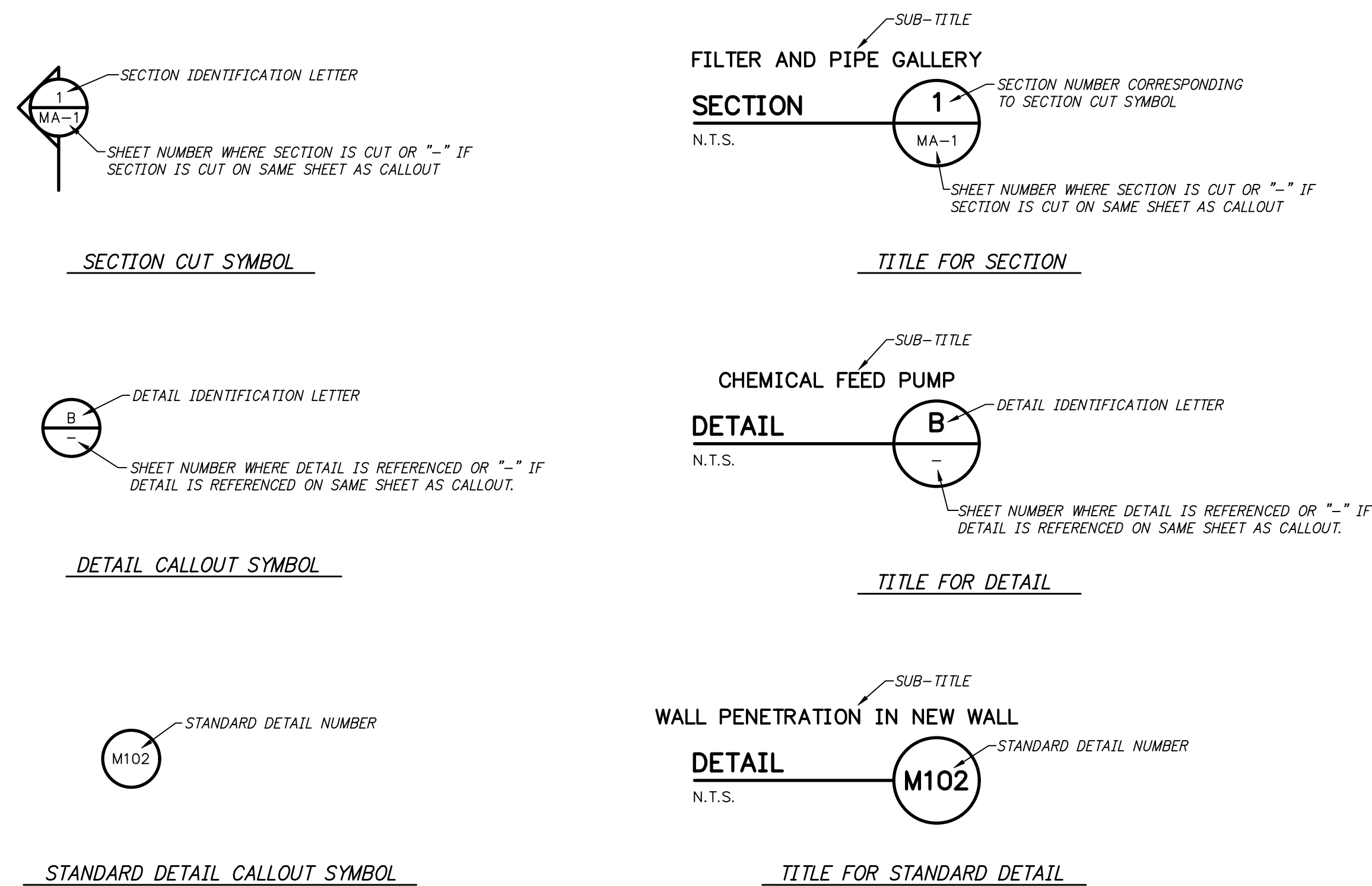
LANDSCAPE AND DRAINAGE SYMBOLS

SYMBOL	FEATURE
	EXISTING BUILDING
	PROPOSED BUILDING
	EXISTING STRUCTURE
	PROPOSED STRUCTURE
	TREE
	EDGE OF WOODS OR TREE LINE
	EDGE OF SHORE LINE
	POND OR LAKE
	STREAM
	DIRECTION OF FLOW FOR STORMWATER
	DIRECTION OF FLOW FOR SWALE OR DRAINAGE DITCH
	RIP RAP OR ROCK FILL
	SILT FENCE
	DITCH CHECK

UNDERGROUND/OVERHEAD UTILITY SYMBOLS

SYMBOL	FEATURE
	8"SS - SANITARY SEWER AND MANHOLE
	24"RCP - STORM DRAIN AND DRAINAGE INLET
	DB - DRAINAGE JUNCTION BOX
	GI - GRATED DRAINAGE INLET
	FHV - FIRE HYDRANT WITH WATCH VALVE
	ILV - IN LINE VALVE
	6"FM - FORCE MAIN
	30" RW-DI - PROCESS PIPE LINE CALLOUT
	PP - PIPE MATERIAL (OPTIONAL)
	PP - ABBREVIATED PROCESS LINE DESCRIPTION (SEE SHEET G-4)
	PP - PIPE DIAMETER
	OHEP - OVERHEAD ELECTRIC PRIMARY POWER LINE AND POWER POLE
	OHE - OVERHEAD ELECTRIC SECONDARY POWER
	UGEP - UNDERGROUND ELECTRIC PRIMARY POWER LINE AND ELECTRIC MANHOLE OR VAULT
	UGE - UNDERGROUND ELECTRIC
	OHE - OVERHEAD TELEPHONE LINE
	UGT - UNDERGROUND TELEPHONE LINE
	FOC - FIBER OPTIC CABLE
	PP - POWER POLE WITH GUY ANCHOR
	MLP - METER LOOP POLE
	EV - ELECTRIC VAULT
	XFMR - ELECTRIC TRANSFORMER
	EJB - ELECTRIC JUNCTION BOX
	GEN - GENERATOR
	AC - AIR CONDITIONER UNIT PAD MOUNTED
	TR - TELEPHONE SERVICE RISER
	WM - WATER METER
	WMB - WATER METER BOX (VALVE BOX OR OTHER)
	CO - CLEANOUT
	GM - GAS METER
	GR - GAS REGULATOR
	HYD - TRACER WIRE TERMINAL BOX
	HYD - FLUSHING HYDRANT
	YH - YARD HYDRANT
	WCP - PROPOSED WATER CANNON PAD
	WCP - EXISTING WATER CANNON PAD
	BSS - BULK SOIL SAMPLE

SECTION AND DETAIL DESIGNATION



SURFACE ELEVATION SYMBOLS

SYMBOL	FEATURE
	EXISTING INTERMEDIATE CONTOUR LINE AND ELEVATION DESIGNATION
	EXISTING INDEX CONTOUR LINE AND ELEVATION DESIGNATION
	PROPOSED INTERMEDIATE CONTOUR LINE AND ELEVATION DESIGNATION
	PROPOSED INDEX CONTOUR LINE AND ELEVATION DESIGNATION
	SPOT ELEVATION
	EXISTING CHANNEL (REVERSE SYMBOLS FOR EMBANKMENT)
	PROPOSED CHANNEL (REVERSE SYMBOLS FOR EMBANKMENT)

MISCELLANEOUS ABBREVIATIONS

ABBREVIATION	DEFINITION
AI	AREA INLET
BOC	BACK OF CURB
CL	CENTERLINE
DI	DROP INLET OR DRAINAGE INLET
DNSTM	DOWNSTEAM
EOC	EDGE OF CONCRETE
EOG	EDGE OF GRAVEL
EOP	EDGE OF PAVEMENT
FC	FENCE CORNER
FES	FLARED END SECTION
FL	FLOWLINE
INT	INTERSECTION
JB	JUNCTION BOX
PC	POINT OF CURVATURE
PT	POINT OF TANGENT
TOC	TOP OF CURB
UPSTM	UPSTREAM

GENERAL LEGEND

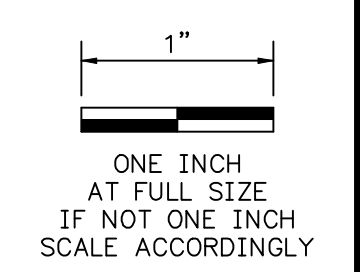
SYMBOL	DESCRIPTION
	EXISTING PIPE, STRUCTURE OR OTHER ITEMS TO BE DEMOLISHED
	EXISTING PIPE, STRUCTURE OR OTHER ITEMS TO BE ABANDONED
	GRAVEL ACCESS DRIVE
	SIDEWALK
	EXISTING PIPE
	NEW PIPE
	NORTH ARROW
	CONTROL POINT

BOUNDARY AND MARKER SYMBOLS

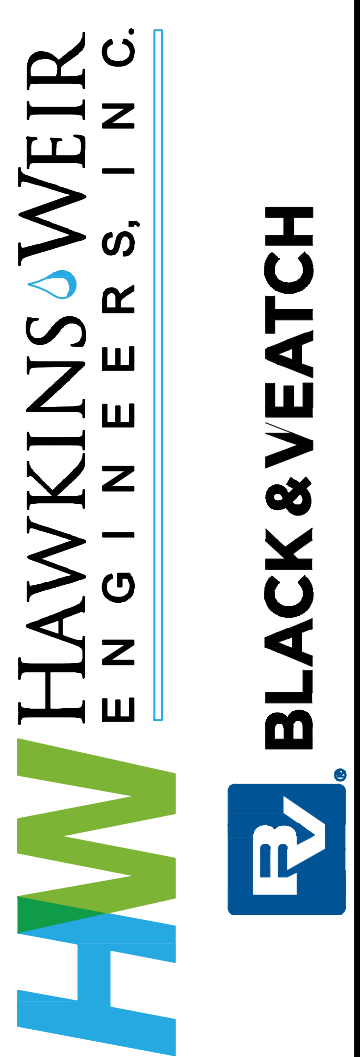
SYMBOL	FEATURE
	FENCE
	GATE WITH GATE POSTS
	PROPERTY LINE
	RIGHT-OF-WAY LINE
	IRON PIN FOUND
	BORING
	MONITORING WELL
	BENCHMARK
	CONTROL MONUMENT

TRAVELED WAY SYMBOLS

SYMBOL	FEATURE
	UNIMPROVED DIRT ROAD OR GRAVELED ROADWAY
	GRAVEL ROAD
	PAVED ROAD OR STREET
	PAVED DRIVE
	ASHPALT DRIVE
	PAVED STREET OR DRIVE WITH CURB AND GUTTER
	CULVERT STREET CROSSING WITH PIPE SIZE AND TYPE
	SIGN



DATE	REVISION



ROGERS, ARKANSAS
ROGERS POLLUTION CONTROL FACILITY (PCF)
SOLIDS HANDLING IMPROVEMENTS, PHASE II

LEGENDS AND ABBREVIATIONS I

FOR: ROGERS WATER UTILITIES

DATE: AUGUST 2024
SCALE: N.T.S.
DESIGNED BY: JSD
DRAWN BY: JCW
HWEI NO.: 2020043
FILENAME: G-3 LEGEND

SHEET NO.
G-3

Z:\20\2020043 ROGERS SOLIDS HANDLING IMPROVEMENTS, PH. 2\DRAWINGS\CONSTRUCTION DRAWINGS\WIP\G-3 LEGEND.DWG, 8/26/2024, 11:03 AM, MATT WEIR, LAYOUT