

Z:\20\2020043 ROGERS SOLIDS HANDLING IMPROVEMENTS, PH. 2\DRAWINGS\CONSTRUCTION DRAWINGS\WIP\EB-03.DWG, 8/26/2024 11:17 AM, MATT WEIR, LAYOUT

PANEL PP4

CKT #	DESCRIPTION	WIRE	CB	CONDUIT	LOAD AMPS PHASE A		LOAD AMPS PHASE B		LOAD AMPS PHASE C		CONDUIT	CB	WIRE	DESCRIPTION	CKT #
					CONNECTED	DEMAND	CONNECTED	DEMAND	CONNECTED	DEMAND					
1	TRANSFORMER TM 37.5KVA	#3 (#8)	100	1 1/2"	78	30					1"	30	#10 (#10)	VEHICLE STORAGE HEATER EUH-2	2
3	"	"	"	"			78	30			"	"	"	"	4
5	HVAC AC/HEAT PUMP	#10 (#10)	30	1"					20	20	"	"	"	"	6
7	"	"	"	"	20	20					1"	30	#10 (#10)	VEHICLE STORAGE HEATER EUH-3	8
9	"	"	"	"			20	20			"	"	"	"	10
11	VEHICLE STORAGE EXHAUST FAN	#12 (#12)	15	1"					5	5	"	"	"	"	12
13	"	"	"	"	5	5					1"	20	#12 (#12)	STORAGE ROOM HEATER EUH-4	14
15	"	"	"	"			5	5			"	"	"	"	16
17	FAB AREA EXHAUST FAN	#12 (#12)	15	1"					2	2	"	"	"	"	18
19	"	"	"	"	2	2					1"	50	#8 (#8)	VEHICLE STORAGE EDH-1	20
21	"	"	"	"			2	2			"	"	"	"	22
23	VEHICLE STORAGE HEATER EUH-1	#10 (#10)	30	1"					20	20	"	"	"	"	24
25	"	"	"	"							"	"	"	"	26
27	"	"	"	"							"	"	"	"	28
29	SPARE	(-)	20	-							"	"	"	"	30
25	SPARE	(-)	20	-							"	"	"	"	26
27	"	"	"	"							"	"	"	"	28
29	"	"	"	"							"	"	"	"	30
25	SPARE	(-)	20	-							"	"	"	"	26
27	"	"	"	"							"	"	"	"	28
29	"	"	"	"							"	"	"	"	30
TOTAL CONNECTED					205		205		127						
TOTAL DEMAND					157		157		127						

TYPE: LIGHTING AND APPLIANCE
 VOLTS: 277/480V, THREE PHASE, FOUR WIRE
 MAIN: 300 AMP
 BUS: 400 AMP
 RATING: 42 KAIC
 MOUNTING: SURFACE MOUNT
 ENCLOSURE RATING: NEMA 1
 BRANCH BREAKERS: BOLT-ON

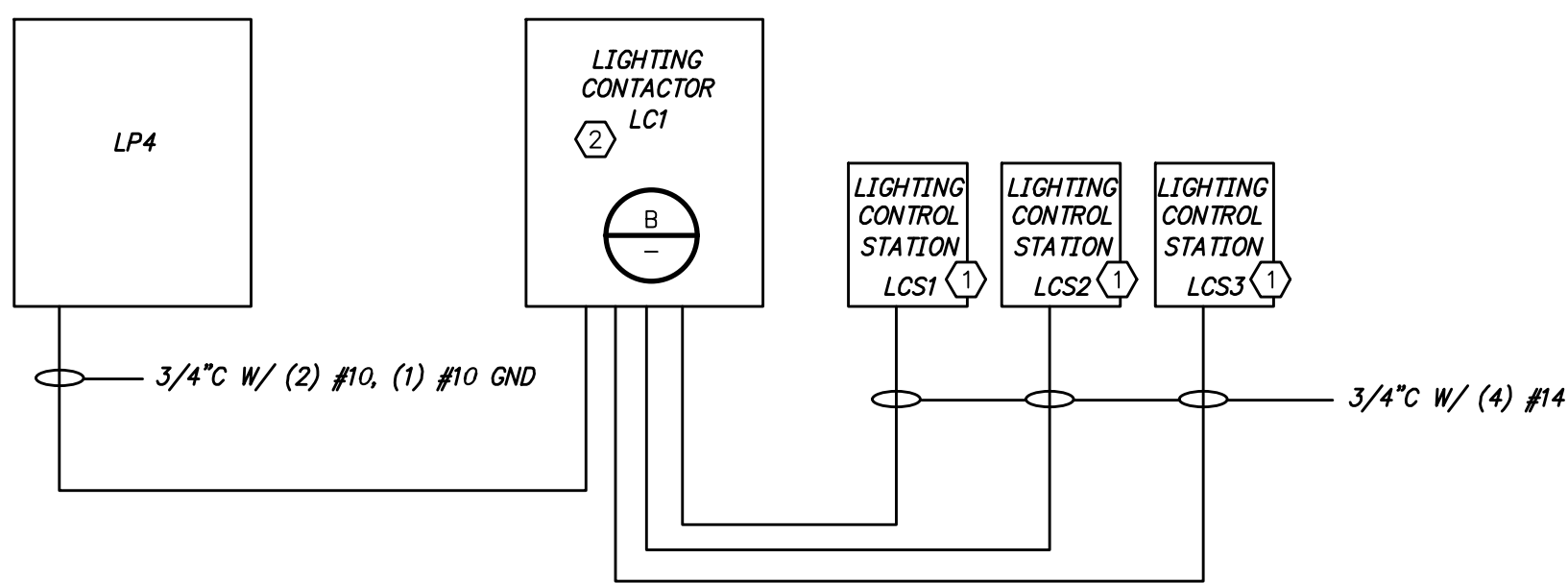
CONNECTED KVA: 148
 DEMAND KVA: 122
 DESIGN KVA: 166

PANEL LP4

CKT #	DESCRIPTION	WIRE (GND)	CB	CONDUIT	LOAD AMPS PHASE A		LOAD AMPS PHASE B		CONDUIT	CB	WIRE (GND)	DESCRIPTION	CKT #	
					CONNECTED	DEMAND	CONNECTED	DEMAND						
1	EXTERIOR LIGHTS	#12 (#12)	20	3/4"	7	7			3/4"	20	#12 (#12)	EXTERIOR RECEPTACLES	2	
3	STORAGE ROOM LIGHTS	#12 (#12)	20	3/4"	4.5	4.5	2.5	2.5	3/4"	20	#12 (#12)	STORAGE ROOM RECEPTACLES	4	
5	LOCKER ROOM LIGHT	#12 (#12)	20	3/4"	0.5	0.5			3/4"	20	#12 (#12)	LOCKER ROOM RECEPTACLES	6	
7	HALLWAY LIGHT	#12 (#12)	20	3/4"	1.5	1.5	0.5	0.5	3/4"	20	#12 (#12)	HALLWAY RECEPTACLE	8	
9	BATHROOM LIGHTS	#12 (#12)	20	3/4"	1	1			3/4"	20	#12 (#12)	BATHROOM RECEPTACLE	10	
11	OFFICE 105 LIGHTS	#12 (#12)	20	3/4"	1.5	1.5	2	2	3/4"	20	#12 (#12)	OFFICE 105 RECEPTACLES	12	
13	OFFICE 106 LIGHTS	#12 (#12)	20	3/4"	3	3			3/4"	20	#12 (#12)	OFFICE 106 RECEPTACLES	14	
15	VEHICLE STORAGE LIGHTS	#12 (#12)	20	3/4"	12	12	6	6	3/4"	20	#12 (#12)	VEHICLE STORAGE RECEPTACLES	16	
17	"	"	"	"	7.5	7.5			3/4"	20	#12 (#12)	FAB AREA RECEPTACLES	18	
19	BATHROOM EXHAUST FAN	#12 (#12)	20	3/4"			4	4	3/4"	20	#12 (#12)	LOCKER ROOM HEATER	20	
21	LOCKER ROOM EXHAUST FAN	#12 (#12)	20	3/4"			12.5	12.5	3/4"	20	#12 (#12)	BATHROOM HEATER	22	
23	STORAGE ROOM EXHAUST FAN	#12 (#12)	20	3/4"			5	5	1 1/2"	70	#10 (#10)	FAB AREA WELDING RECEPT	24	
25	SPARE	(-)	20	-					"	"	"	"	"	26
27	SPARE	(-)	20	-					"	"	"	"	"	28
29	SPARE	(-)	20	-					"	"	"	"	"	30
31	SPARE	(-)	20	-					"	"	"	"	"	32
33	SPARE	(-)	20	-					"	"	"	"	"	34
35	SPARE	(-)	20	-					"	"	"	"	"	36
37	SPARE	(-)	20	-					"	"	"	"	"	38
39	SPARE	(-)	20	-					"	"	"	"	"	40
41	SPARE	(-)	20	-					"	"	"	"	"	42
TOTAL CONNECTED					111		103.5							
TOTAL DEMAND					61		53.5							

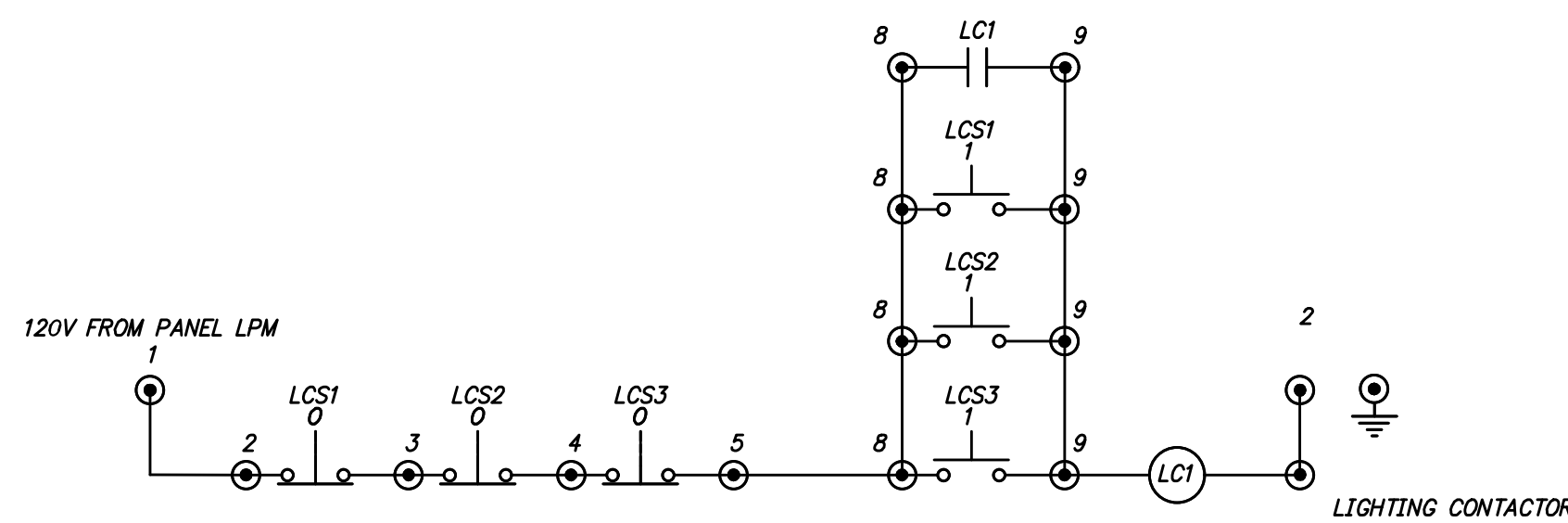
TYPE: LIGHTING AND APPLIANCE
 VOLTS: 120/240V, SINGLE PHASE, THREE WIRE
 MAIN: 225 AMP
 BUS: 225 AMP
 RATING: 10 KAIC
 MOUNTING: SURFACE MOUNT
 ENCLOSURE RATING: NEMA 1
 BRANCH BREAKERS: BOLT-ON

CONNECTED KVA: 25
 DEMAND KVA: 13
 DESIGN KVA: 54



LIGHTING CONTACTOR LC1 AND CONTROL STATIONS RISER DIAGRAM

DETAIL A

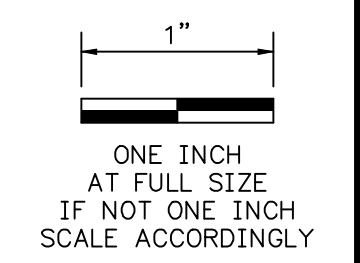


LIGHTING CONTROLS CONTROL DIAGRAM

DETAIL B

KEYED NOTES

- ① THE LIGHTING CONTROL STATIONS SHALL BE SINGLE HOLE PUSHBUTTON NEMA 4X ENCLOSURES, WEIGMANN HW-MAX1P8-22, WITH SQUARE D XB48W73731G5 GREEN FLUSH/RED PROJECTING ILLUMINATED DOUBLEHEADED PUSHBUTTON 22MM 1N0+1NC 120V. CONDUCTORS FOR MULTIPLE LCS CAN BE COMBINED IN A HOMERUN CONDUIT AT THE CONTRACTOR'S DISCRETION.
- ② THE LIGHTING CONTACTOR SHALL BE HOUSED IN A NEMA 3R/12 ENCLOSURE SIMILAR TO AUTOMATION DIRECT MODEL SCE-1412BEL.J. LIGHTING CONTACTOR SHALL BE RATED AT A MINIMUM OF 30 AMPS AT 277 VOLTS, WITH A COIL VOLTAGE OF 120 VOLTS.



DATE	REVISION



HAWKINS WEIR ENGINEERS, INC.
BLACK & VEATCH

ROGERS, ARKANSAS
 ROGERS POLLUTION CONTROL FACILITY (PCF) SOLIDS HANDLING IMPROVEMENTS, PHASE II
 MAINTENANCE BUILDING SCHEDULES AND DETAILS
 FOR: ROGERS WATER UTILITIES

DATE: AUGUST 2024
 SCALE: NTS
 DESIGNED BY: LSM
 DRAWN BY: LSM
 HWELI NO.: 2020043
 FILENAME: EB-03