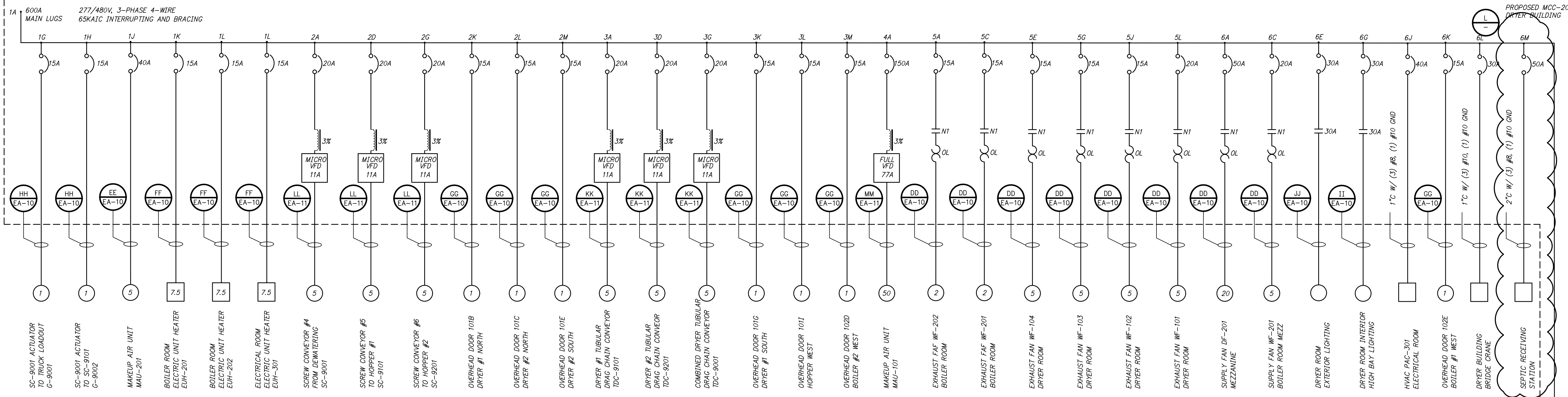


Z:\20\2020043 ROGERS SOLIDS HANDLING IMPROVEMENTS, PH. 2\DRAWINGS\CONSTRUCTION DRAWINGS\WIP\EA-04.DWG, 8/26/2024 11:14 AM, MATT WEIR, LAYOUT



1" = 1" ONE INCH AT FULL SIZE IF NOT ONE INCH SCALE ACCORDINGLY

DATE	
REVISION	

© HAWKINS-WEIR ENGINEERS, INC. 2024



HAWKINS-WEIR ENGINEERS, INC.
BLACK & VEATCH

ROGERS, ARKANSAS
ROGERS POLLUTION CONTROL FACILITY (PCF)
SOLIDS HANDLING IMPROVEMENTS, PHASE II

DRYER BUILDING MCC-20
ONE-LINE DIAGRAM AND ELEVATION

FOR: ROGERS WATER UTILITIES

DATE: AUGUST 2024
SCALE: NTS
DESIGNED BY: LSM
DRAWN BY: LSM
HWEI NO.: 2020043
FILENAME: EA-04

SHEET NO. EA-4

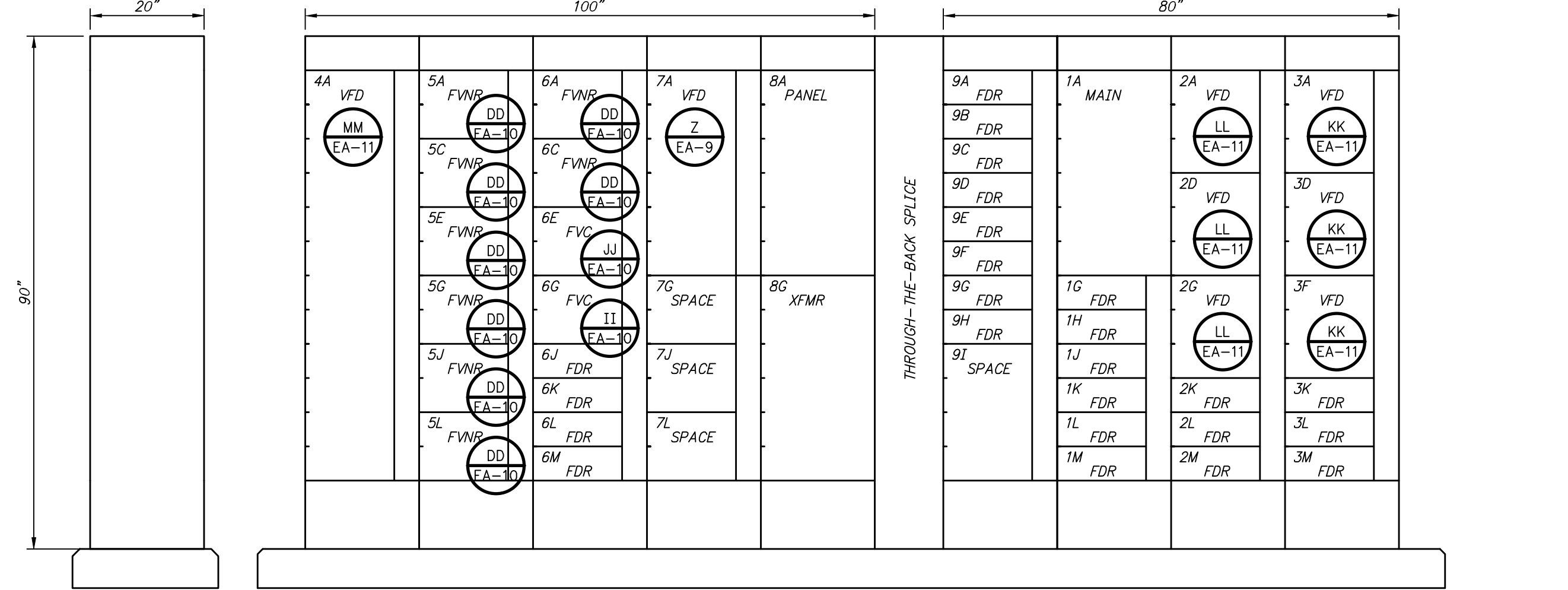
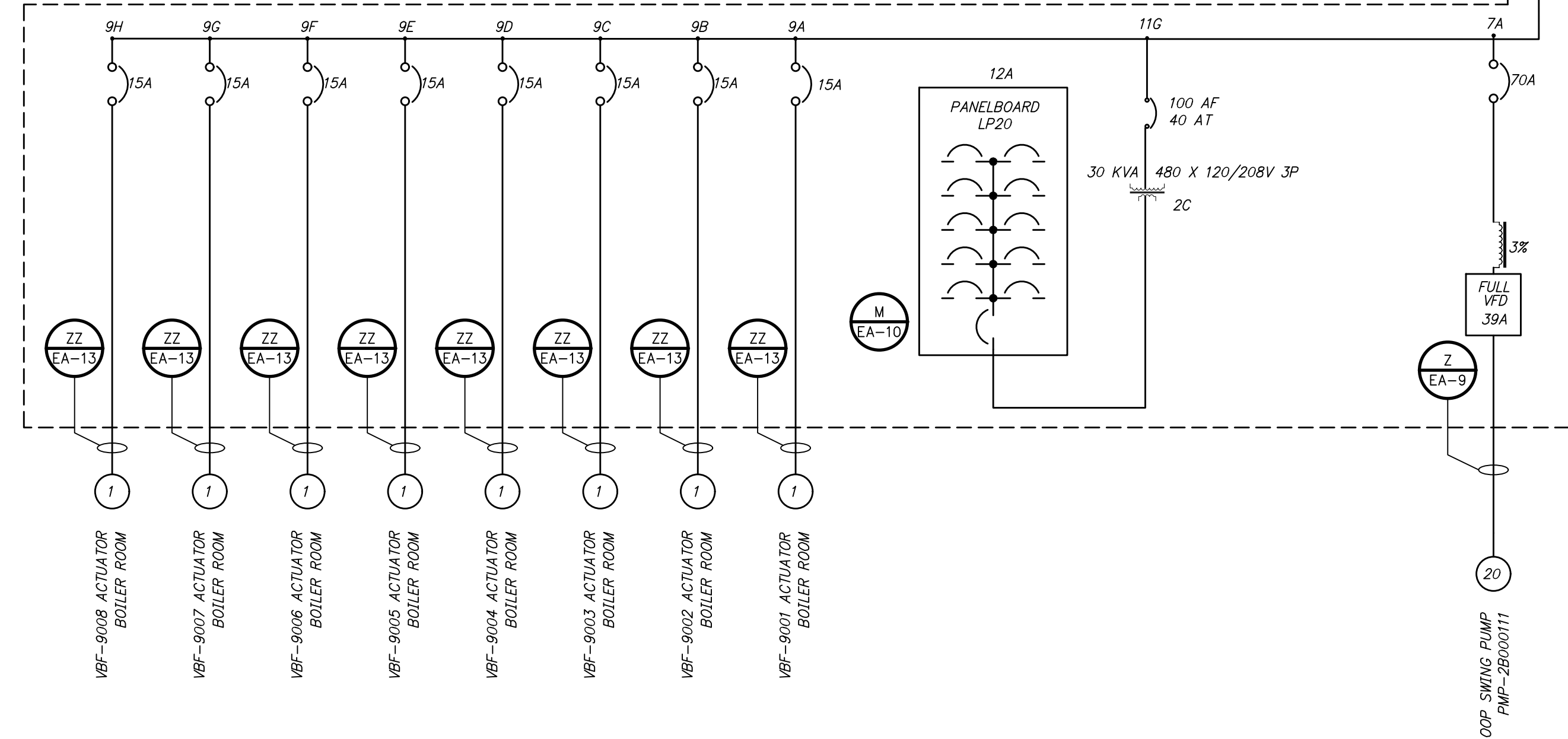
PANEL LP20

CKT #	DESCRIPTION	WIRE	CB	CONDUIT	LOAD AMPS PHASE A		LOAD AMPS PHASE B		LOAD AMPS PHASE C		CONDUIT	CB	WIRE	DESCRIPTION	CKT #
					CONNECTED	DEMAND	CONNECTED	DEMAND	CONNECTED	DEMAND					
1	HP-501 HEAT PUMP	#10 (#10)	30	3/4"	25	25					3/4"	20	#12 (#12)	BOILER ROOM UNIT HEATERS	2
3	"	"	"	"	8	8					"	"	"	"	4
5	WH-301 H2O HEATER	#12 (#12)	20	3/4"			25	25	10	10	3/4"	20	#12 (#12)	RECEPTACLES	6
7	"	"	"	"	10	10			6	6	3/4"	20	#12 (#12)	RECEPTACLES	8
9	LIGHTS	#12 (#12)	20	3/4"	6	6			5	5	3/4"	20	#12 (#12)	EMH-101 H2O HEATER	10
11	LIGHTS	#12 (#12)	20	3/4"	38	38			5	5	"	"	"	"	12
13	LIGHTS	#12 (#12)	20	3/4"	5	5			38	38	3/4"	20	#12 (#12)	RECEPTACLES	14
15	PLC-17 CONTROL POWER	#12 (#12)	20	3/4"	6	6			5	5	"	"	"	"	16
17	DRYER ROOM HTR GUH-101, 102	#12 (#12)	20	3/4"					3	3	"	"	"	"	18
19	DRYER ROOM HTR GUH-103, 104	#12 (#12)	20	3/4"					3	3	"	"	"	"	20
21	DRYER ROOM HTR GUH-105, 106	#12 (#12)	20	3/4"					3	3	"	"	"	"	22
23	DRYER ROOM HTR GUH-107	#12 (#12)	20	3/4"					3	3	"	"	"	"	24
25	SPARE		20								"	"	"	"	26
27	SPARE		20						13	13	"	"	"	RESTROOM 104 WH-401	28
29	SPARE		20						13	13	"	"	"	OFFICE 105 WH-501	30
TOTAL CONNECTED					63		97		78						
TOTAL DEMAND					63		97		78						

TYPE: LIGHTING AND APPLIANCE
VOLTS: 120/208, THREE PHASE, FOUR WIRE
MAIN: 100 AMP
BUS: 100 AMP
RATING: 10 KAIC
MOUNTING: MCC INTERIOR
ENCLOSURE RATING: NEMA 1

CONNECTED KVA: 12
DEMAND KVA: 12
DESIGN KVA: 30

DRYER BUILDING MCC-20 ONE-LINE DIAGRAM
DETAIL K
NTS



DRYER BUILDING MCC-20 ELEVATION AND LAYOUT
DETAIL L
NTS

- GENERAL NOTES**
- VFD RATINGS ARE CONTINUOUS OUTPUT AMPS. DO NOT SIZE BY MOTOR HORSEPOWER. A MICRO VFD IS COMMONLY REFERRED TO AS MACHINE DRIVE. A FULL SIZE VFD IS COMMONLY REFERRED TO AS A PROCESS DRIVE.
 - ALL VFD MCC BUCKETS SHALL INCLUDE A CONTROL POWER TRANSFORMER, HOA THREE POSITION SWITCH, SPEED POTENTIOMETER, GREEN VFD RUNNING PILOT LIGHT, RED VFD FAULTED PILOT LIGHT, AND ETHERNET IP COMMUNICATION CARD.
 - ALL FVNR MCC BUCKETS SHALL USE NEMA RATED STARTERS, SIZE AS INDICATED, WITH SOLID STATE OVERLOAD WITH ETHERNET IP COMMUNICATION. THE BUCKET SHALL INCLUDE A CONTROL POWER TRANSFORMER, HOA THREE POSITION SWITCH, GREEN RUNNING PILOT LIGHT, RED OVERLOAD PILOT LIGHT, AND ELAPSED TIME METER.
 - THE MCC SHALL INCLUDE ETHERNET IP CABLING, ETHERNET SWITCHES, AND POWER SUPPLIES.
 - ELEVATION DIMENSIONS ARE FOR A BACK TO BACK MCC CONFIGURATION WITH A SPLICE LOCATION.
 - SEE MCC SPECIFICATION 16480 FOR ALL DETAILS.