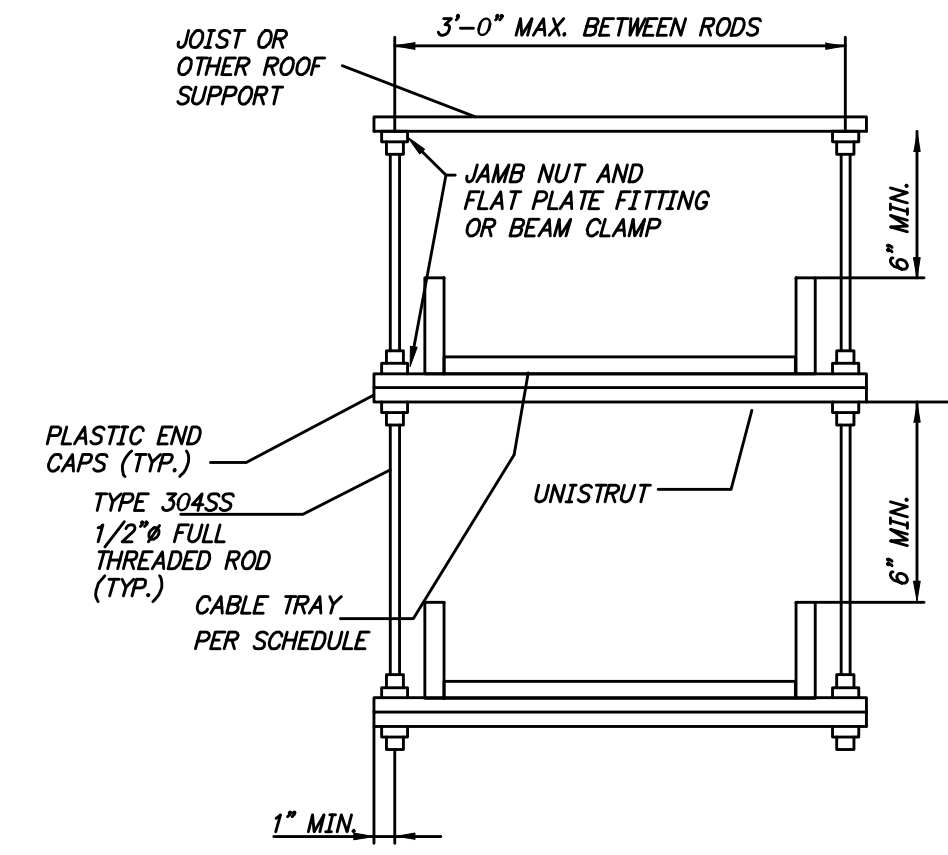


## DRYER BUILDING LIGHTING FIXTURE SCHEDULE

FIXTURE DESIGNATION	VOLTS	WATTS	MANUFACTURER AND MODEL#	QTY	TYPE	NOTES
A	120	42	LITHONIA CSVT L48 5000LM MVOLT 40K 80CRI	14	LED	WALL-MOUNT SHALL INCLUDE CSVTIRBMA ANGLE BRACKET, SET AT 15 DEGREES DOWN HARD CEILING MOUNT SHALL INCLUDE CSVTMB MOUNTING BRACKET
AE	120	42	LITHONIA CSVT L48 5000LM MVOLT 40K 80CRI WITH IE7WCP BATTERY PACK	20	LED	WALL-MOUNT SHALL INCLUDE CSVTIRBMA ANGLE BRACKET, SET AT 15 DEGREES DOWN HARD CEILING MOUNT SHALL INCLUDE CSVTMB MOUNTING BRACKET
B	480	88	LITHONIA WDGE3 LED P4 40K 80CRI RFT 480 SRM DNAXD	14	LED	PROVIDE SPACER BETWEEN THE METAL BUILDING PANEL RIBS FOR FIXTURE MOUNTING
C1	120	132	LITHONIA CPRB 18000LM MVOLT 40K 80CRI PM DWH	12	LED	PENDANT MOUNT AT 12' AFF USING CROUSE-HINDS TP7150 BOX WITH TPRFH12 SWIVEL HANGER. ATTACH CONDUIT AND BOX DIRECTLY TO BOTTOM OF JOISTS. INCLUDE SAFETY CHAIN.
H1	480	269	LITHONIA JHBL 35000LM GL WD HVOLT GZ10 40K 80CRI DWHXD	26	LED	PENDANT MOUNT AT 33' AFF USING CROUSE-HINDS TP7150 BOX WITH TPRFH12 SWIVEL HANGER. ATTACH CONDUIT AND BOX DIRECTLY TO BOTTOM OF Z-PURLINS. INCLUDE SAFETY CHAIN.
H2	480	185	LITHONIA JHBL 24000LM GL WD HVOLT GZ10 40K 80CRI DWHXD (MEZZANINE)	4	LED	PENDANT MOUNT AT H1 HEIGHT USING CROUSE-HINDS TP7150 BOX WITH TPRFH12 SWIVEL HANGER. ATTACH CONDUIT AND BOX DIRECTLY TO BOTTOM OF Z-PURLINS. INCLUDE SAFETY CHAIN.
L	120	42	LITHONIA STAK 2X2 5000LM 80CRI 40K COL MN10 MVOLT	6	LED	LAYIN FIXTURE FOR OFFICE AREA
X	120	6	LITHONIA LHQM LED R HO	7	LED	COMBO EXIT/EMERGENCY FIXTURE
XR	120	6	LITHONIA ELMRW LP220L DNAX T	7	LED	TWIN HEAD EMERGENCY REMOTE FOR USE WITH X FIXTURE



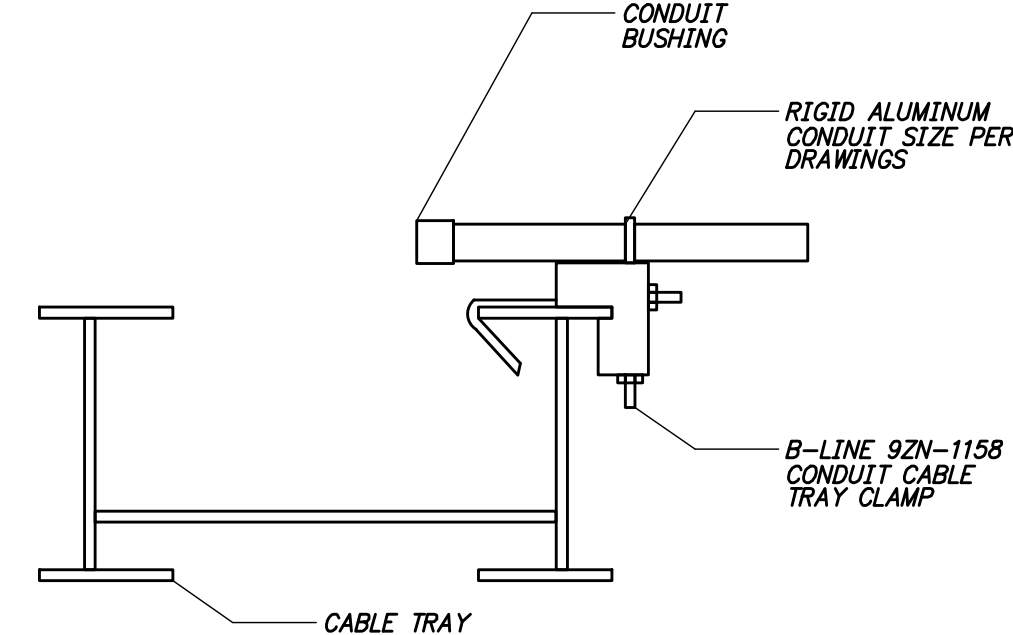
**CABLE TRAY SUSPENDED SUPPORT**  
**DETAIL A**  
N.T.S.

### ELECTRICAL ROOM AND ABOVE OFFICE CABLE TRAY SCHEDULE

QTY	DESCRIPTION	MATERIAL	WIDTH	SPACING	RAIL
140'	POWER CABLE TRAY AT 12' AFF	ALUM	18"	9" LAD	4" RAIL
1	B-LINE 24-A09-18	ALUM	18"	9" LAD	4" RAIL
3	B-LINE 4A-18-90HB12 HORIZONTAL 90	ALUM	18"	9" LAD	4" RAIL
4	B-LINE 4A-18-HT12 HORIZONTAL T	ALUM	18"	9" LAD	4" RAIL
1	B-LINE 4A-30-HT12 HORIZONTAL T	ALUM	30"	9" LAD	4" RAIL
2	B-LINE 4A-30-SR18 STRAIGHT REDUCER 30" TO 18"	ALUM	30"	9" LAD	4" RAIL
20'	B-LINE 24-A09-30	ALUM	30"	9" LAD	4" RAIL
2	B-LINE 4A-18-45HB12 HORIZONTAL 45	ALUM	18"	9" LAD	4" RAIL
2	B-LINE 9P-WS-CI-4-30 WALL SLEEVE KIT	ALUM	30"	9" LAD	4" RAIL
INSTRUMENTATION CABLE TRAY AT 13'-4" AFF					
80'	B-LINE 24-A09-18	ALUM	18"	9" LAD	4" RAIL
1	B-LINE 4A-18-90HB12 HORIZONTAL 90	ALUM	18"	9" LAD	4" RAIL
1	B-LINE 4A-18-HT12 HORIZONTAL T	ALUM	18"	9" LAD	4" RAIL
1	B-LINE 4A-30-HT12 HORIZONTAL T	ALUM	30"	9" LAD	4" RAIL
2	B-LINE 4A-30-SR18 STRAIGHT REDUCER 30" TO 18"	ALUM	30"	9" LAD	4" RAIL
20'	B-LINE 24-A09-30	ALUM	30"	9" LAD	4" RAIL
2	B-LINE 4A-18-45HB12 HORIZONTAL 45	ALUM	18"	9" LAD	4" RAIL
2	B-LINE 9P-WS-CI-4-30 WALL SLEEVE KIT	ALUM	30"	9" LAD	4" RAIL

### BOILER ROOM CABLE TRAY SCHEDULE

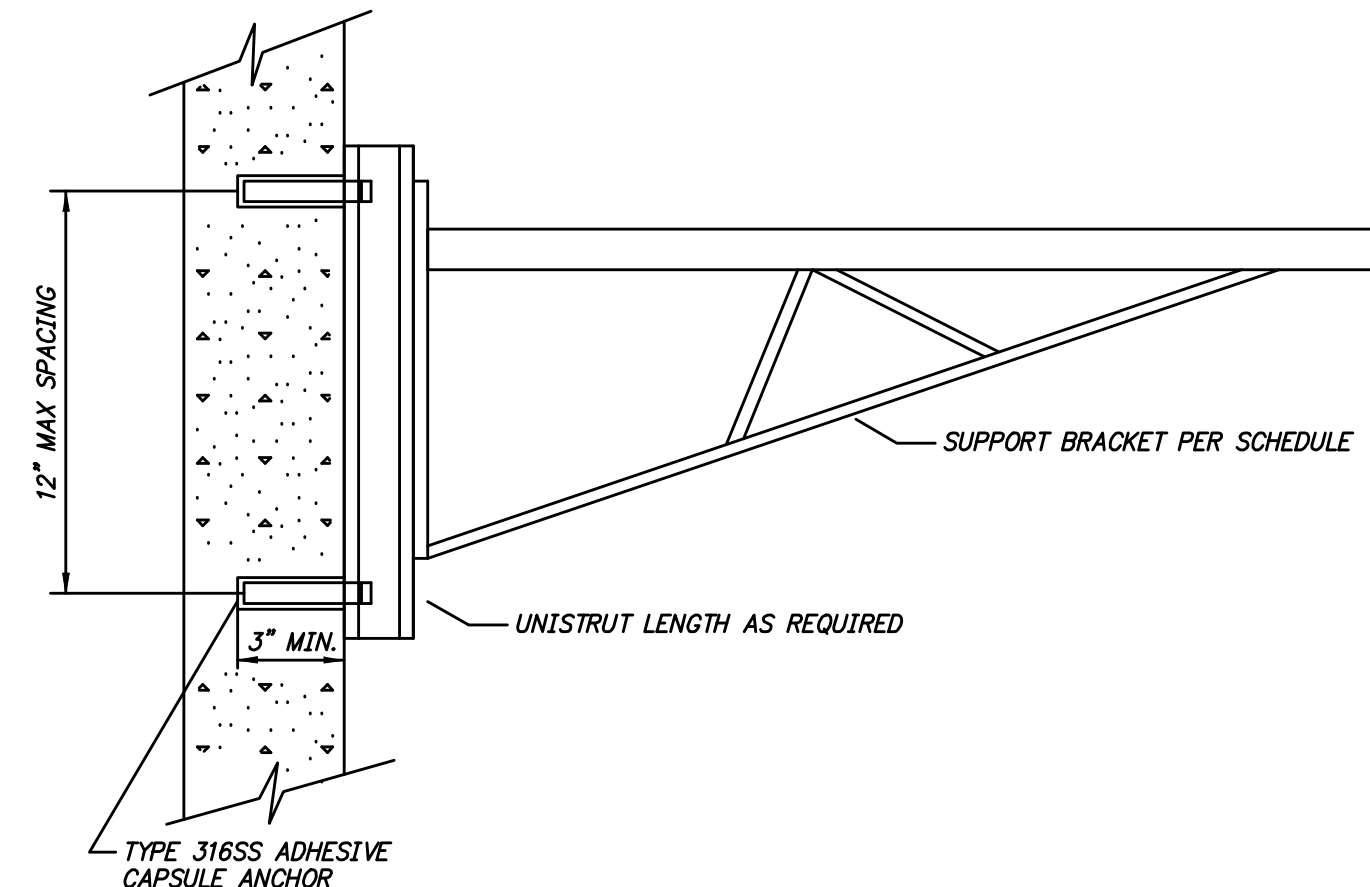
QTY	DESCRIPTION	MATERIAL	WIDTH	SPACING	RAIL
40'	POWER CABLE TRAY AT 12' AFF	ALUM	12"	9" LAD	4" RAIL
1	B-LINE 4A-12-90HB12 HORIZONTAL 90	ALUM	12"	9" LAD	4" RAIL
1	B-LINE 4A-18-SR12 STRAIGHT REDUCER 18" TO 12"	ALUM	18"	9" LAD	4" RAIL
1	B-LINE 9P-WS-CI-4-18 WALL SLEEVE KIT	ALUM	18"	9" LAD	4" RAIL
INSTRUMENTATION CABLE TRAY AT 13'-4" AFF					
40'	B-LINE 24-A09-12	ALUM	12"	9" LAD	4" RAIL
1	B-LINE 4A-12-90HB12 HORIZONTAL 90	ALUM	12"	9" LAD	4" RAIL
1	B-LINE 4A-18-SR12 STRAIGHT REDUCER 18" TO 12"	ALUM	18"	9" LAD	4" RAIL
1	B-LINE 9P-WS-CI-4-18 WALL SLEEVE KIT	ALUM	18"	9" LAD	4" RAIL



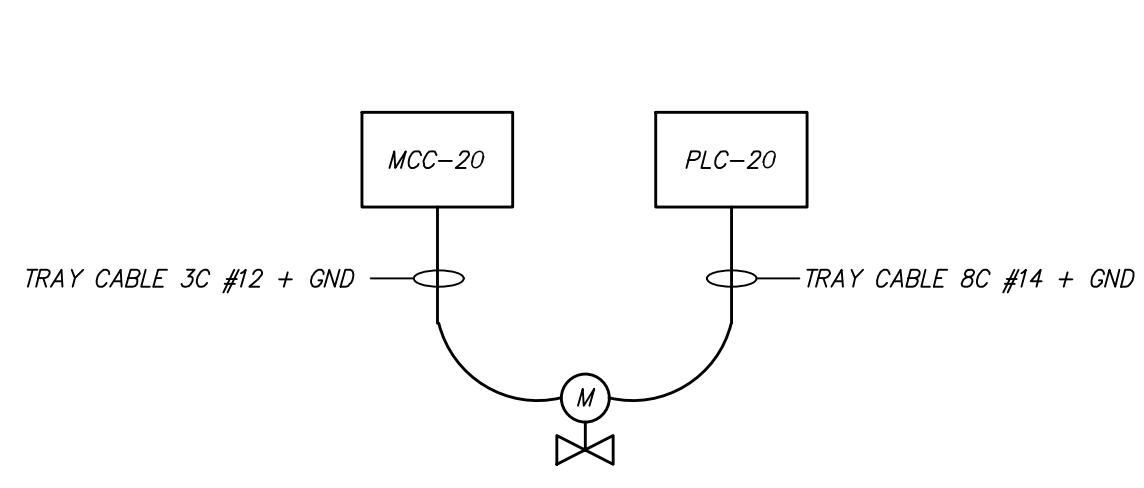
**CABLE TRAY CONDUIT SUPPORT**  
**DETAIL B**  
N.T.S.

### DRYER ROOM CABLE TRAY SCHEDULE

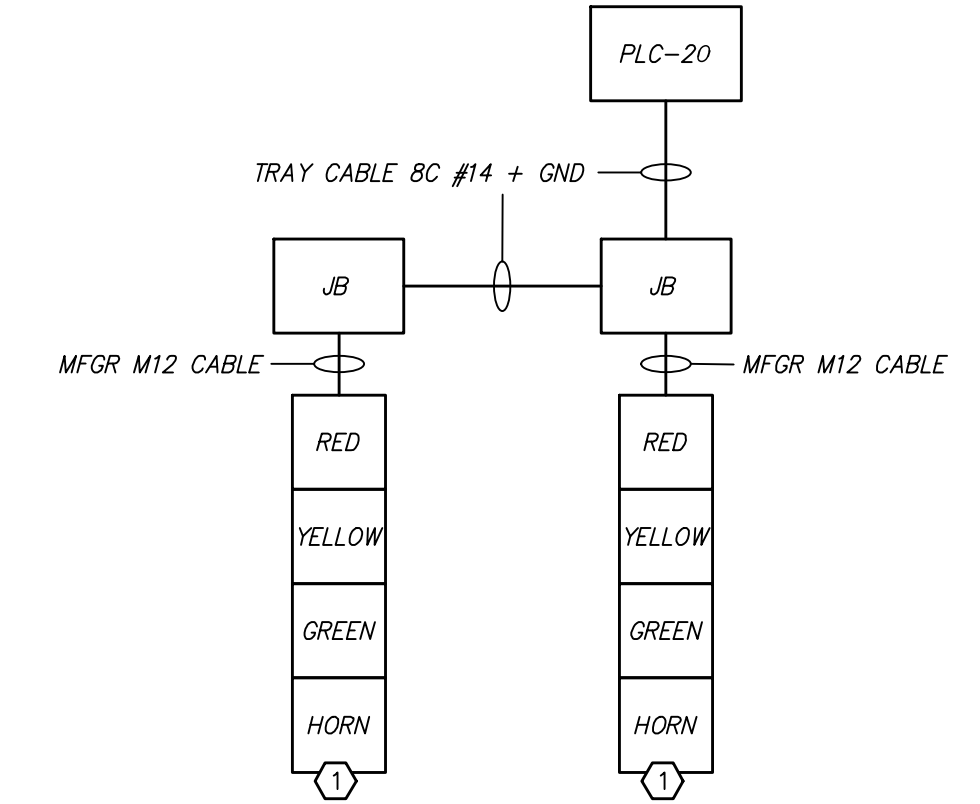
QTY	DESCRIPTION	MATERIAL	WIDTH	SPACING	RAIL
220'	POWER CABLE TRAY AT 12' AFF	ALUM	12"	9" LAD	4" RAIL
50'	B-LINE 24-A09-12	ALUM	12"	9" LAD	4" RAIL
50'	B-LINE 24-A09-30	ALUM	30"	9" LAD	4" RAIL
75'	B-LINE 24-A09-18	ALUM	18"	9" LAD	4" RAIL
4	B-LINE 4A-30-HT12 HORIZONTAL T	ALUM	30"	9" LAD	4" RAIL
2	B-LINE 4A-30-90HB12 HORIZONTAL 90	ALUM	30"	9" LAD	4" RAIL
2	B-LINE 4A-30-SR18 STRAIGHT REDUCER 30" TO 18"	ALUM	30"	9" LAD	4" RAIL
2	B-LINE 2A-30-45HB12 HORIZONTAL 45	ALUM	30"	9" LAD	4" RAIL
2	B-LINE 2A-18-45HB12 HORIZONTAL 45	ALUM	18"	9" LAD	4" RAIL
2	B-LINE 2A-12-45HB12 HORIZONTAL 45	ALUM	12"	9" LAD	4" RAIL
1	B-LINE 4A-18-90HB12 HORIZONTAL 90	ALUM	18"	9" LAD	4" RAIL
1	B-LINE 4A-18-12-HT12 REDUCING T 18" TO 12"	ALUM	18"	9" LAD	4" RAIL
INSTRUMENTATION CABLE TRAY AT 13'-4" AFF					
220'	B-LINE 24-A09-12	ALUM	12"	9" LAD	4" RAIL
50'	B-LINE 24-A09-30	ALUM	30"	9" LAD	4" RAIL
75'	B-LINE 24-A09-18	ALUM	18"	9" LAD	4" RAIL
4	B-LINE 4A-30-HT12 HORIZONTAL T	ALUM	30"	9" LAD	4" RAIL
2	B-LINE 4A-30-90HB12 HORIZONTAL 90	ALUM	30"	9" LAD	4" RAIL
2	B-LINE 4A-30-SR18 STRAIGHT REDUCER 30" TO 18"	ALUM	30"	9" LAD	4" RAIL
2	B-LINE 2A-30-45HB12 HORIZONTAL 45	ALUM	30"	9" LAD	4" RAIL
2	B-LINE 2A-18-45HB12 HORIZONTAL 45	ALUM	18"	9" LAD	4" RAIL
2	B-LINE 2A-12-45HB12 HORIZONTAL 45	ALUM	12"	9" LAD	4" RAIL
1	B-LINE 4A-18-90HB12 HORIZONTAL 90	ALUM	18"	9" LAD	4" RAIL
1	B-LINE 4A-18-12-HT12 REDUCING T 18" TO 12"	ALUM	18"	9" LAD	4" RAIL



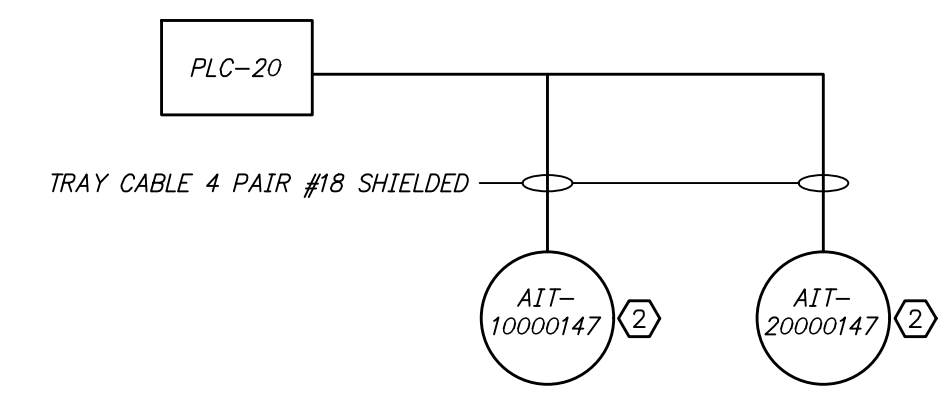
**CABLE TRAY WALL SUPPORT**  
**DETAIL C**  
N.T.S.



**BOILER ROOM VALVE ACTUATORS RISER DIAGRAM (TYP OF 8)**  
**DETAIL ZZ**  
N.T.S. EA-4



**HVAC AIR CHANGE STATUS STACK LIGHT RISER DIAGRAM**  
**DETAIL AB**  
N.T.S. EA-15



**COMBUSTIBLE GAS DETECTOR RISER DIAGRAM**  
**DETAIL AC**  
N.T.S. EA-15

- KEYED NOTES**
- ① AUTOMATION DIRECT STACK LIGHT MODEL LS7-302DBWC9-RYGNV OR EQUAL, WITH SZ110D WALL MOUNT BRACKET.
  - ② COMBUSTIBLE GAS DETECTOR RKI 65-2645RD-05 OR EQUAL.

1"  
ONE INCH AT FULL SIZE  
IF NOT ONE INCH SCALE ACCORDINGLY

DATE	REVISION



**HAWKINS WEIR ENGINEERS, INC.**  
**BLACK & VEATCH**

ROGERS, ARKANSAS  
ROGERS POLLUTION CONTROL FACILITY (PCF)  
SOLIDS HANDLING IMPROVEMENTS, PHASE II  
DRYER BUILDING  
CABLE TRAY AND LIGHTING SCHEDULES  
FOR: ROGERS WATER UTILITIES

DATE: AUGUST 2024  
SCALE: N.T.S.  
DESIGNED BY: LSM  
DRAWN BY: LSM  
HWEI NO.: 2020043  
FILENAME: EA-13

SHEET NO.  
**EA-13**

Z:\20\2020043 ROGERS SOLIDS HANDLING IMPROVEMENTS, PH 2\DRAWINGS\CONSTRUCTION DRAWINGS\WMP\EA-13.DWG. 8/26/2024 11:17 AM. MATT WEIR, LAYOUT