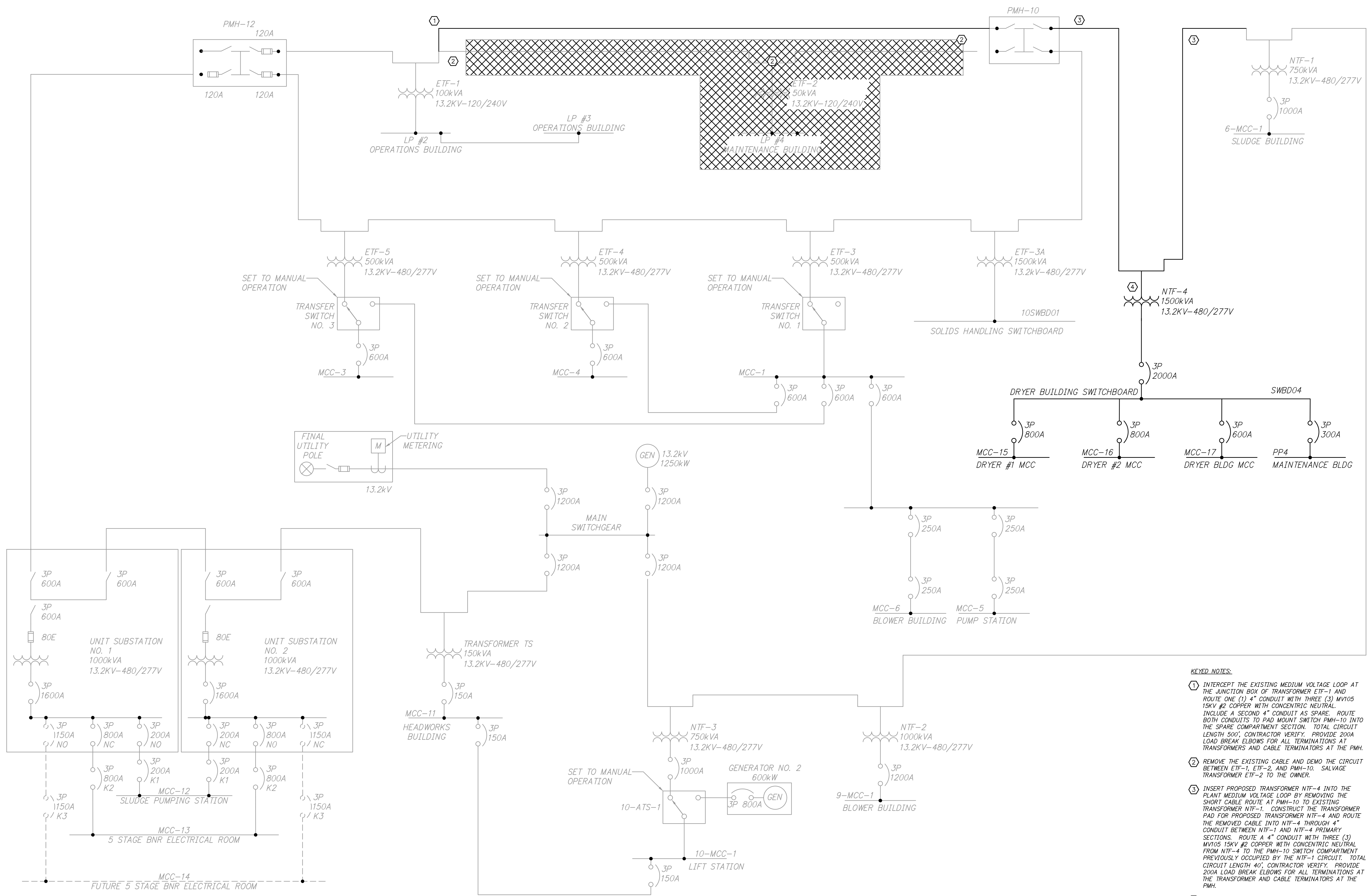


Z:\20\2020043 ROGERS SOLIDS HANDLING IMPROVEMENTS, PH. 2\DRAWINGS\CONSTRUCTION DRAWINGS\WMP\E-01.DWG, 8/26/2024 11:12 AM, MATT WEIR, LAYOUT



MEDIUM VOLTAGE LOOP
ONE-LINE DIAGRAM
NTS

1" = 1" ONE INCH AT FULL SIZE IF NOT ONE INCH SCALE ACCORDINGLY

DATE	REVISION



HAWKINS WEIR ENGINEERS, INC.
BLACK & VEATCH

ROGERS, ARKANSAS
ROGERS POLLUTION CONTROL FACILITY (PCF)
SOLIDS HANDLING IMPROVEMENTS, PHASE II
MEDIUM VOLTAGE LOOP
ELECTRICAL ONE-LINE DIAGRAM
FOR: ROGERS WATER UTILITIES

- KEYED NOTES:**
- INTERCEPT THE EXISTING MEDIUM VOLTAGE LOOP AT THE JUNCTION BOX OF TRANSFORMER ETF-1 AND ROUTE ONE (1) 4" CONDUIT WITH THREE (3) MV105 15KV #2 COPPER WITH CONCENTRIC NEUTRAL. INCLUDE A SECOND 4" CONDUIT AS SPARE. ROUTE BOTH CONDUITS TO PAD MOUNT SWITCH PMH-10 INTO THE SPARE COMPARTMENT SECTION. TOTAL CIRCUIT LENGTH 500', CONTRACTOR VERIFY. PROVIDE 200A LOAD BREAK ELBOWS FOR ALL TERMINATIONS AT TRANSFORMERS AND CABLE TERMINATORS AT THE PMH.
 - REMOVE THE EXISTING CABLE AND DEMO THE CIRCUIT BETWEEN ETF-1, ETF-2, AND PMH-10. SALVAGE TRANSFORMER ETF-2 TO THE OWNER.
 - INSERT PROPOSED TRANSFORMER NTF-4 INTO THE PLANT MEDIUM VOLTAGE LOOP BY REMOVING THE SHORT CABLE ROUTE AT PMH-10 TO EXISTING TRANSFORMER NTF-1. CONSTRUCT THE TRANSFORMER PAD FOR PROPOSED TRANSFORMER NTF-4 AND ROUTE THE REMOVED CABLE INTO NTF-4 THROUGH 4" CONDUIT BETWEEN NTF-1 AND NTF-4 PRIMARY SECTIONS. ROUTE 4" CONDUIT WITH THREE (3) MV105 15KV #2 COPPER WITH CONCENTRIC NEUTRAL FROM NTF-4 TO THE PMH-10 SWITCH COMPARTMENT PREVIOUSLY OCCUPIED BY THE NTF-1 CIRCUIT. TOTAL CIRCUIT LENGTH 40', CONTRACTOR VERIFY. PROVIDE 200A LOAD BREAK ELBOWS FOR ALL TERMINATIONS AT THE TRANSFORMER AND CABLE TERMINATORS AT THE PMH.
 - PROVIDE AND INSTALL A 1500KVA 13.2KV X 277/480V PAD MOUNT TRANSFORMER NTF-4, SIMILAR OR EQUAL TO UNIT PRESENTLY ON ORDER BY ROGERS PCF FOR PLANT SPARE PER PROJECT SPECIFICATIONS.

DATE: AUGUST 2024
SCALE: NTS
DESIGNED BY: LSM
DRAWN BY: LSM
HWEI NO.: 2020043
FILENAME: E-01