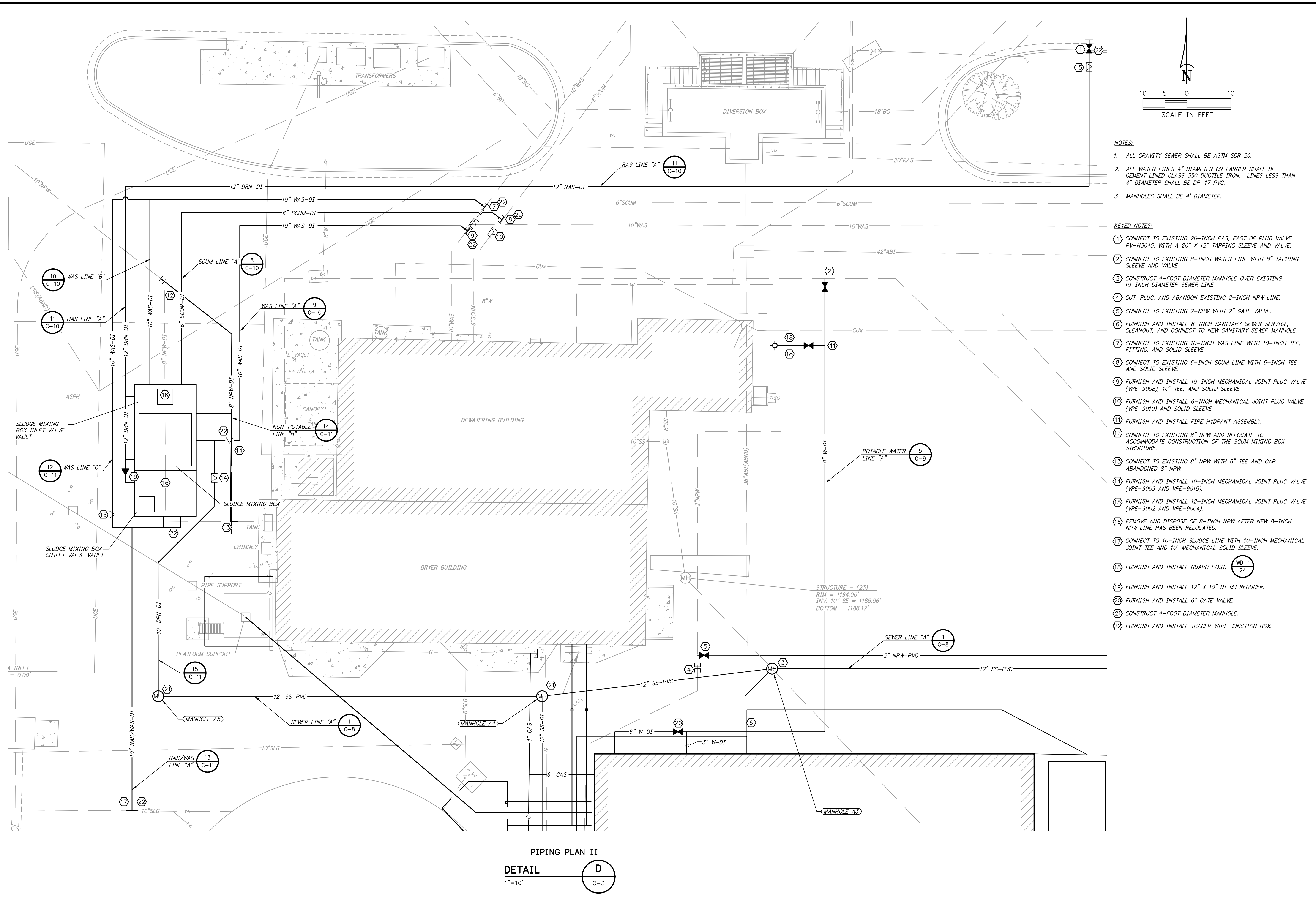
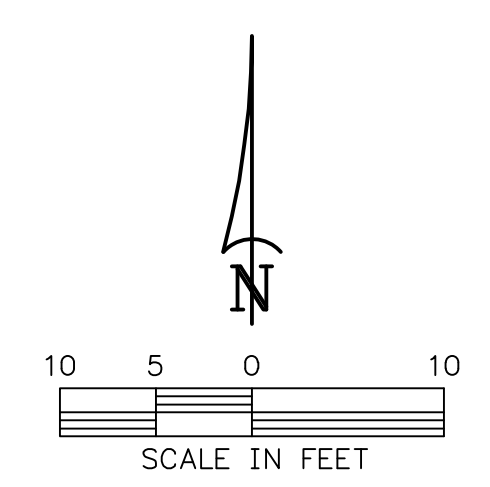


Z:\20\2020043 ROGERS SOLIDS HANDLING IMPROVEMENTS, PH. 2\DRAWINGS\CONSTRUCTION DRAWINGS\WMP\C-05.DWG, 8/26/2024 11:07 AM, MATT WEIR, LAYOUT



PIPING PLAN II  
**DETAIL D**  
 1"=10'



- NOTES:**
- ALL GRAVITY SEWER SHALL BE ASTM SDR 26.
  - ALL WATER LINES 4" DIAMETER OR LARGER SHALL BE CEMENT LINED CLASS 350 DUCTILE IRON. LINES LESS THAN 4" DIAMETER SHALL BE DR-17 PVC.
  - MANHOLES SHALL BE 4' DIAMETER.

- KEYED NOTES:**
- CONNECT TO EXISTING 20-INCH RAS, EAST OF PLUG VALVE PV-H3045, WITH A 20" X 12" TAPPING SLEEVE AND VALVE.
  - CONNECT TO EXISTING 8-INCH WATER LINE WITH 8" TAPPING SLEEVE AND VALVE.
  - CONSTRUCT 4-FOOT DIAMETER MANHOLE OVER EXISTING 10-INCH DIAMETER SEWER LINE.
  - CUT, PLUG, AND ABANDON EXISTING 2-INCH NPW LINE.
  - CONNECT TO EXISTING 2-NPW WITH 2" GATE VALVE.
  - FURNISH AND INSTALL 8-INCH SANITARY SEWER SERVICE, CLEANOUT, AND CONNECT TO NEW SANITARY SEWER MANHOLE.
  - CONNECT TO EXISTING 10-INCH WAS LINE WITH 10-INCH TEE, FITTING, AND SOLID SLEEVE.
  - CONNECT TO EXISTING 6-INCH SCUM LINE WITH 6-INCH TEE AND SOLID SLEEVE.
  - FURNISH AND INSTALL 10-INCH MECHANICAL JOINT PLUG VALVE (VPE-9008), 10" TEE, AND SOLID SLEEVE.
  - FURNISH AND INSTALL 6-INCH MECHANICAL JOINT PLUG VALVE (VPE-9010) AND SOLID SLEEVE.
  - FURNISH AND INSTALL FIRE HYDRANT ASSEMBLY.
  - CONNECT TO EXISTING 8" NPW AND RELOCATE TO ACCOMMODATE CONSTRUCTION OF THE SCUM MIXING BOX STRUCTURE.
  - CONNECT TO EXISTING 8" NPW WITH 8" TEE AND CAP ABANDONED 8" NPW.
  - FURNISH AND INSTALL 10-INCH MECHANICAL JOINT PLUG VALVE (VPE-9009 AND VPE-9016).
  - FURNISH AND INSTALL 12-INCH MECHANICAL JOINT PLUG VALVE (VPE-9002 AND VPE-9004).
  - REMOVE AND DISPOSE OF 8-INCH NPW AFTER NEW 8-INCH NPW LINE HAS BEEN RELOCATED.
  - CONNECT TO 10-INCH SLUDGE LINE WITH 10-INCH MECHANICAL JOINT TEE AND 10" MECHANICAL SOLID SLEEVE.
  - FURNISH AND INSTALL GUARD POST. (WD-1/24)
  - FURNISH AND INSTALL 12" X 10" DI MJ REDUCER.
  - FURNISH AND INSTALL 6" GATE VALVE.
  - CONSTRUCT 4-FOOT DIAMETER MANHOLE.
  - FURNISH AND INSTALL TRACER WIRE JUNCTION BOX.

DATE	
REVISION	
ROGERS, ARKANSAS ROGERS POLLUTION CONTROL FACILITY (PCF) SOLIDS HANDLING IMPROVEMENTS, PHASE II <b>PIPING PLAN II</b> FOR: ROGERS WATER UTILITIES	
DATE:	AUGUST 2024
SCALE:	1"=10'
DESIGNED BY:	JDS
DRAWN BY:	MAW
HWI NO.:	2020043
FILENAME:	C-05
SHEET NO.	C-5