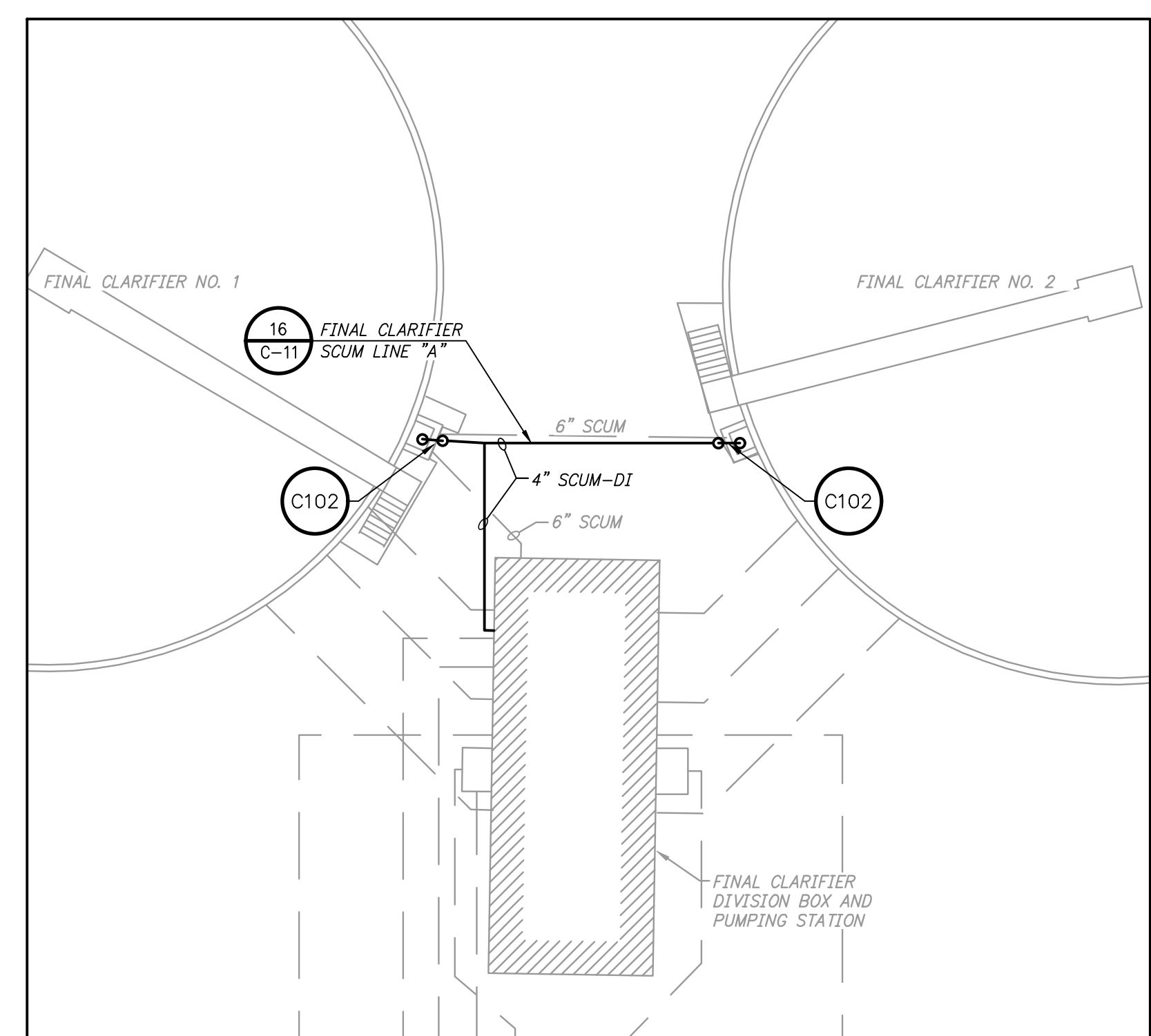
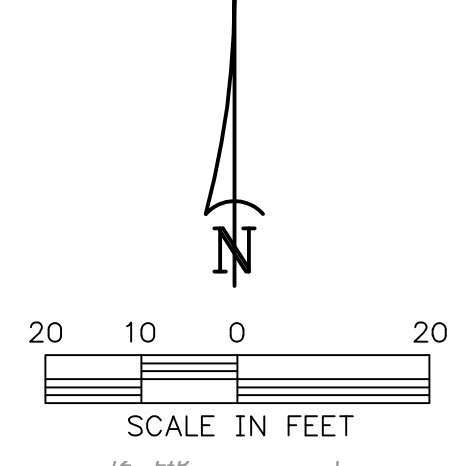
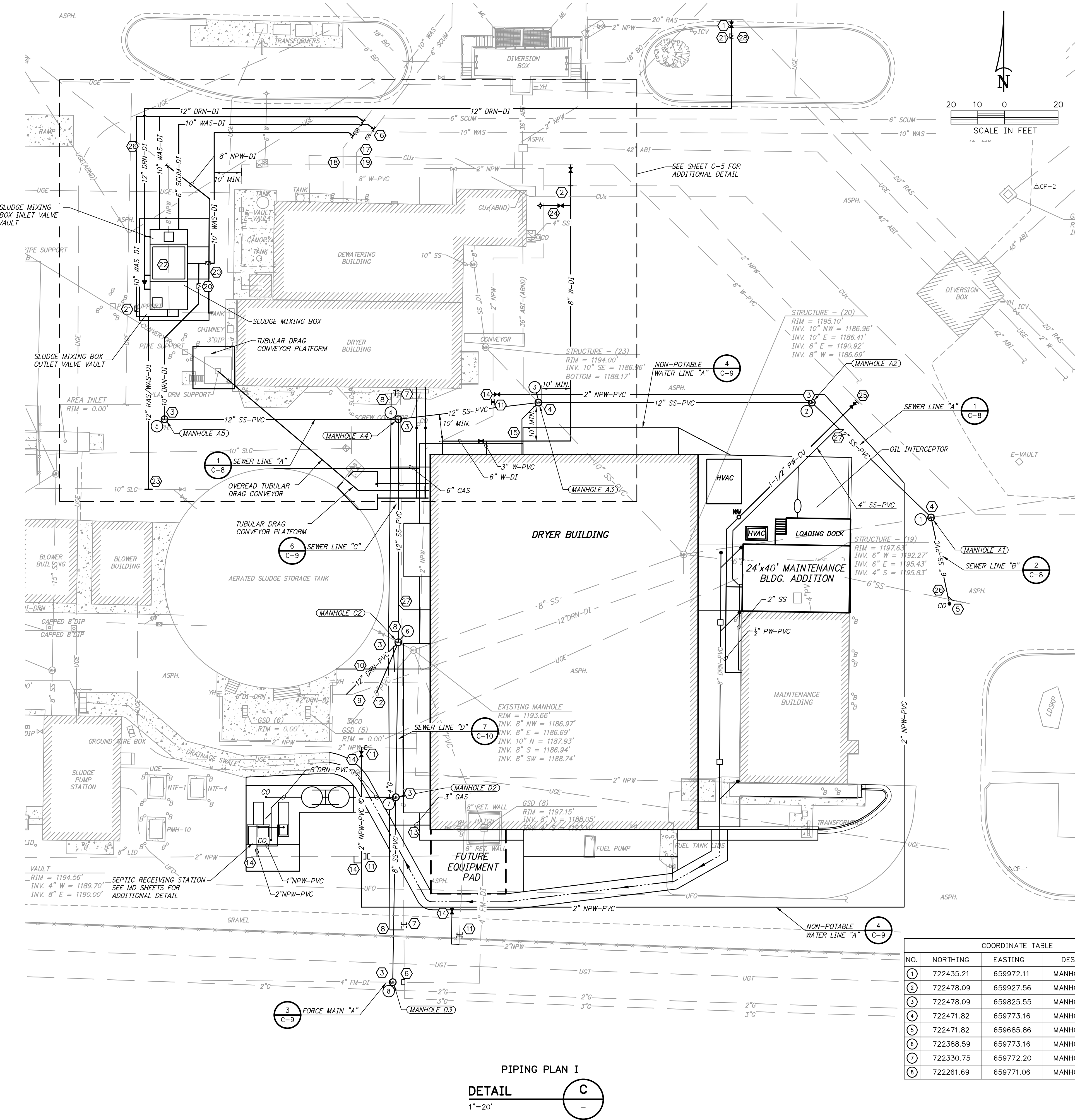


Z:\20\2020043 ROGERS SOLIDS HANDLING IMPROVEMENTS, PH. 2\DRAWINGS\CONSTRUCTION DRAWINGS\WIP\C-04.DWG, 8/26/2024 11:06 AM, MATT WEIR, LAYOUT



FINAL CLARIFIERS
DIVISION BOX AND PUMP STATION
1"=20'

- NOTES:**
- ALL GRAVITY SEWER SHALL BE ASTM SDR 26.
 - ALL WATER LINES 4" DIAMETER OR LARGER SHALL BE CEMENT LINED CLASS 350 DUCTILE IRON. LINES LESS THAN 4" DIAMETER SHALL BE DR-17 PVC.
 - MANHOLES SHALL BE 4' DIAMETER.
- KEYED NOTES:**
- CONNECT TO EXISTING 20-INCH RAS WITH 20" X 12" TAPPING SLEEVE AND VALVE.
 - CONNECT TO EXISTING 8-INCH WATER LINE WITH 8" TAPPING SLEEVE AND VALVE.
 - CONSTRUCT 4-FOOT DIAMETER MANHOLE.
 - CONSTRUCT 4-FOOT DIAMETER MANHOLE OVER EXISTING 10-INCH DIAMETER SEWER LINE.
 - CONNECT TO EXISTING 6-INCH SANITARY SEWER SERVICE WITH AN 45 DEGREE FITTING, WYE, AND CLEANOUT. EXTEND NEW NEW 6" SEWER SERVICE AND CONNECT TO NEW MANHOLE.
 - CUT, PLUG, AND ABANDON EXISTING 4-INCH FORCE MAIN.
 - CUT, PLUG, AND ABANDON EXISTING 3-INCH GAS LINE.
 - FURNISH AND INSTALL NEW 4-INCH GAS LINE AND CONNECT TO EXISTING 3-INCH GAS LINE.
 - CUT, PLUG, AND ABANDON EXISTING 12-INCH OVERFLOW PIPE.
 - CONNECT TO AND EXTEND NEW 12-INCH OVERFLOW PIPE TO NEW MANHOLE.
 - CUT, PLUG, AND ABANDON EXISTING 2-INCH NPW LINE.
 - CONNECT TO AND EXTEND 8" DRAIN TO NEW MANHOLE.
 - INSTALL NEW 4-INCH GAS LINE TO DRYER BUILDING.
 - CONNECT TO EXISTING 2-NPW WITH 2" GATE VALVE.
 - FURNISH AND INSTALL 8-INCH SANITARY SEWER SERVICE, CLEANOUT, AND CONNECT TO NEW SANITARY SEWER MANHOLE.
 - CONNECT TO EXISTING 10-INCH WAS LINE WITH 10-INCH TEE AND SOLID SLEEVE.
 - CONNECT TO EXISTING 6-INCH SCUM LINE WITH 6-INCH TEE AND SOLID SLEEVE.
 - FURNISH AND INSTALL 10-INCH MECHANICAL JOINT PLUG VALVE AND SOLID SLEEVE.
 - FURNISH AND INSTALL 6-INCH MECHANICAL JOINT PLUG VALVE AND SOLID SLEEVE.
 - FURNISH AND INSTALL 10-INCH MECHANICAL JOINT PLUG VALVE.
 - FURNISH AND INSTALL 12-INCH MECHANICAL JOINT PLUG VALVE.
 - REMOVE AND DISPOSE OF 8-INCH NPW AFTER NEW 8-INCH NPW LINE HAS BEEN RELOCATED.
 - CONNECT TO 10-INCH SLUDGE LINE WITH 10-INCH MECHANICAL JOINT TEE AND 12" X 10" MECHANICAL JOINT REDUCER.
 - FURNISH AND INSTALL FIRE HYDRANT ASSEMBLY.
 - FURNISH AND INSTALL 1" WATER SERVICE PER ROGERS WATER UTILITIES DETAIL WITH 1" PRESSURE REDUCING VALVE AFTER THE METER.
 - CUT, PLUG, AND ABANDON EXISTING 6-INCH SANITARY SEWER.
 - CONNECT SANITARY SEWER SERVICE WITH 12" X 4" WYE.

COORDINATE TABLE

NO.	NORTHING	EASTING	DESCRIPTION
1	722435.21	659972.11	MANHOLE A1
2	722478.09	659927.56	MANHOLE A2
3	722478.09	659825.55	MANHOLE A3
4	722471.82	659773.16	MANHOLE A4
5	722471.82	659685.86	MANHOLE A5
6	722388.59	659773.16	MANHOLE C2
7	722330.75	659772.20	MANHOLE D2
8	722261.69	659771.06	MANHOLE D3

PIPING PLAN I
DETAIL
1"=20'

1" = ONE INCH AT FULL SIZE IF NOT ONE INCH SCALE ACCORDINGLY

DATE: _____

REVISION: _____

REG. NO. 12386
JEREMY DON STUBBS
PROFESSIONAL ENGINEER
STATE OF ARKANSAS

HAWKINS WEIR ENGINEERS, INC.

BLACK & VEATCH

ROGERS ARKANSAS
ROGERS POLLUTION CONTROL FACILITY (PCF) SOLIDS HANDLING IMPROVEMENTS, PHASE II

PIPING PLAN I

FOR: ROGERS WATER UTILITIES

DATE: AUGUST 2024
SCALE: 1"=20'
DESIGNED BY: JDS
DRAWN BY: MAW
HWEI NO.: 2020043
FILENAME: C-04

SHEET NO. C-4