

ONE INCH  
AT FULL SIZE  
IF NOT ONE INCH  
SCALE ACCORDINGLY

DATE	REVISION

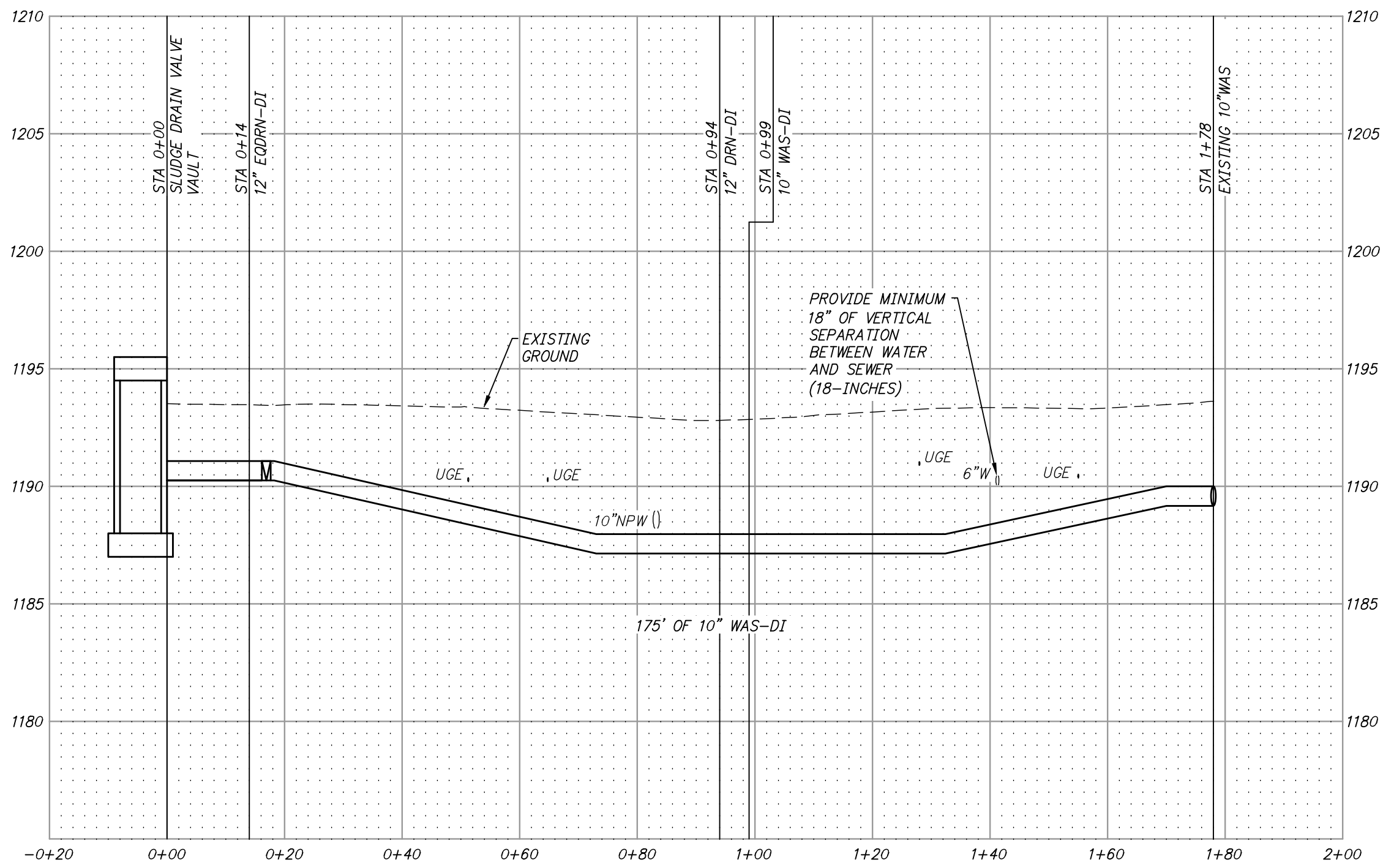


**HAWKINS WEIR ENGINEERS, INC.**  
**BLACK & VEATCH**

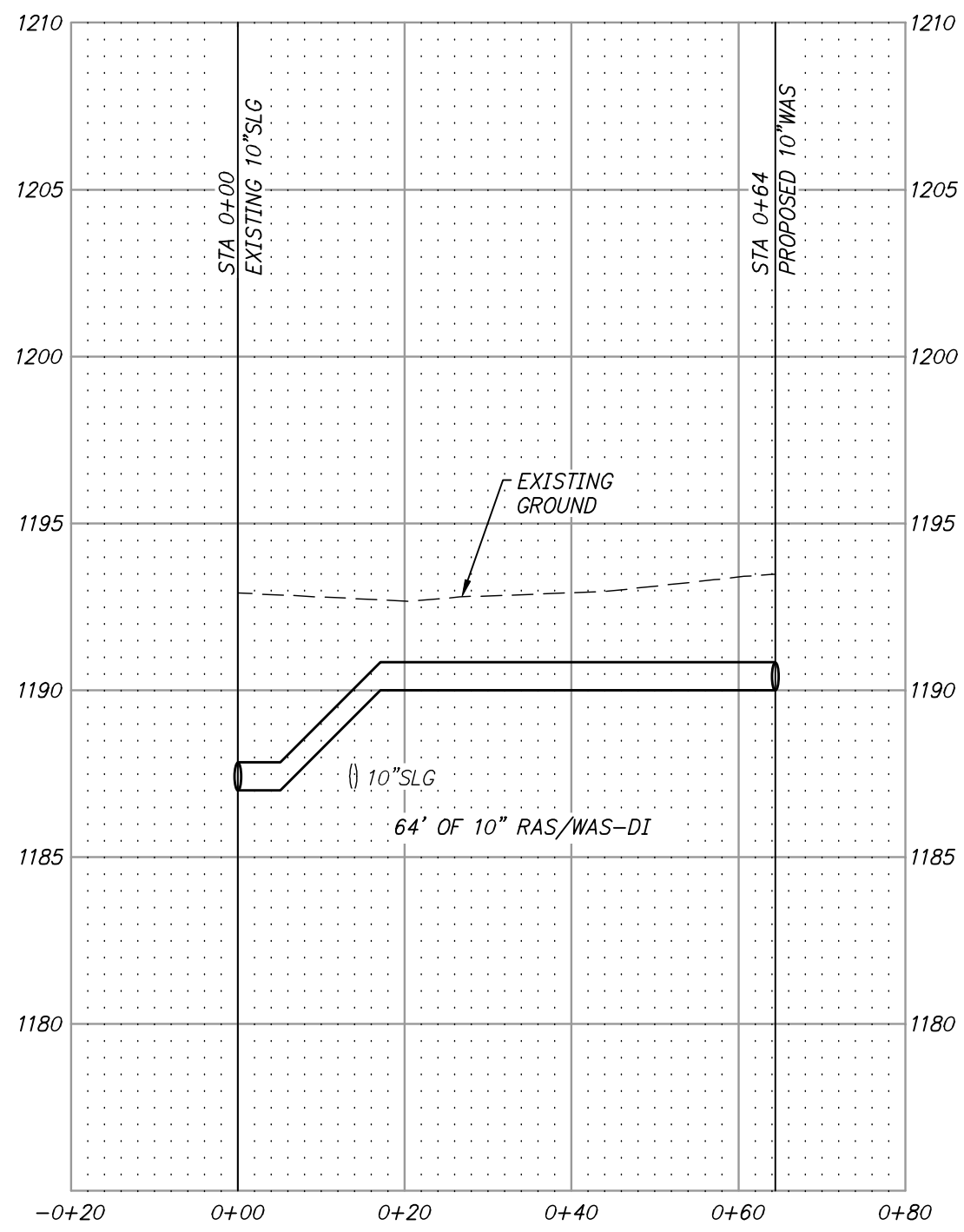
ROGERS, ARKANSAS  
 ROGERS POLLUTION CONTROL FACILITY (PCF)  
 SOLIDS HANDLING IMPROVEMENTS, PHASE II  
 PIPING PROFILES IV  
 FOR: ROGERS WATER UTILITIES

DATE: AUGUST 2024  
 SCALE: AS SHOWN  
 DESIGNED BY: JDS  
 DRAWN BY: MAW  
 HWI NO.: 2020043  
 FILENAME: C-11

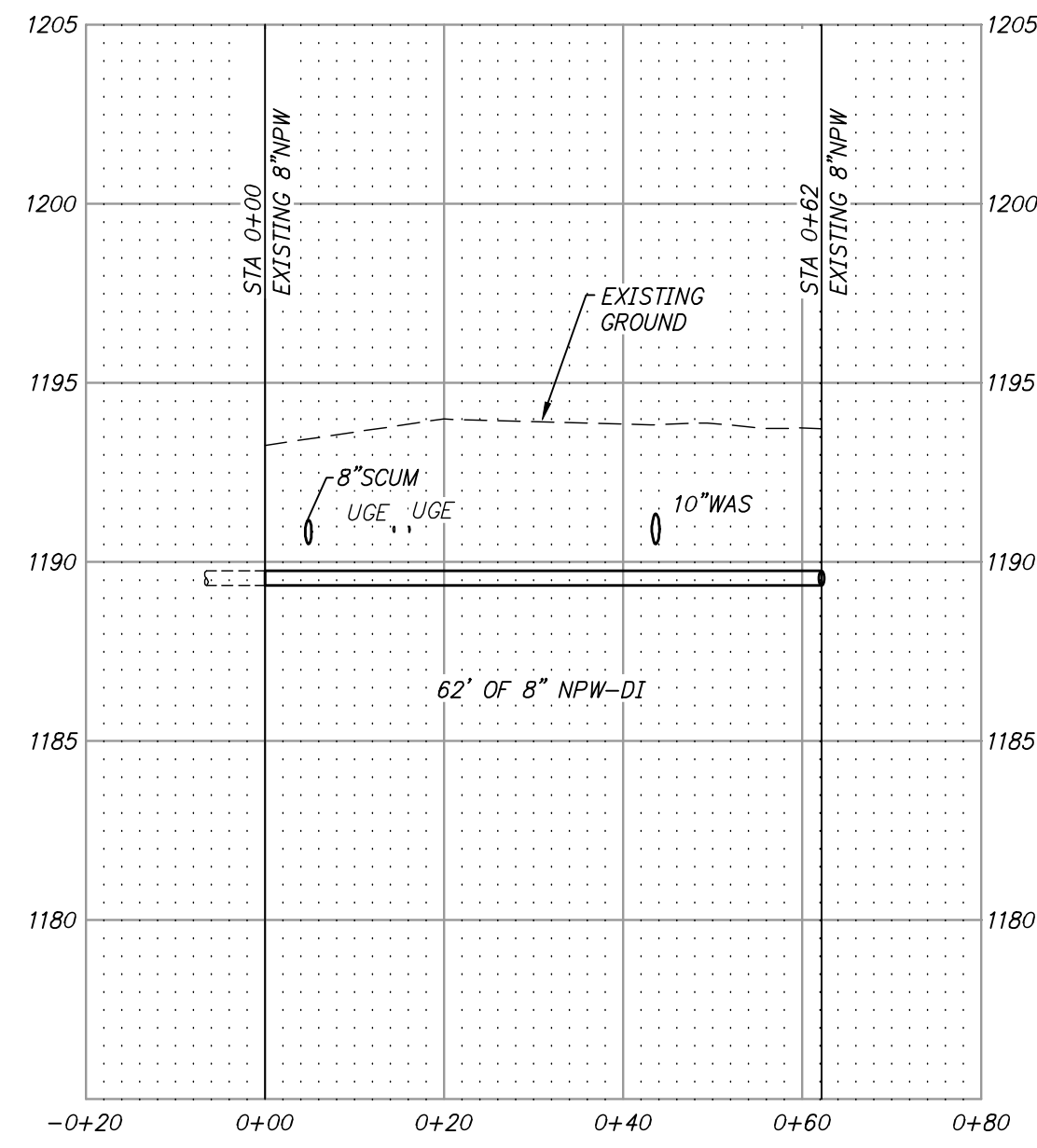
SHEET NO.  
**C-11**



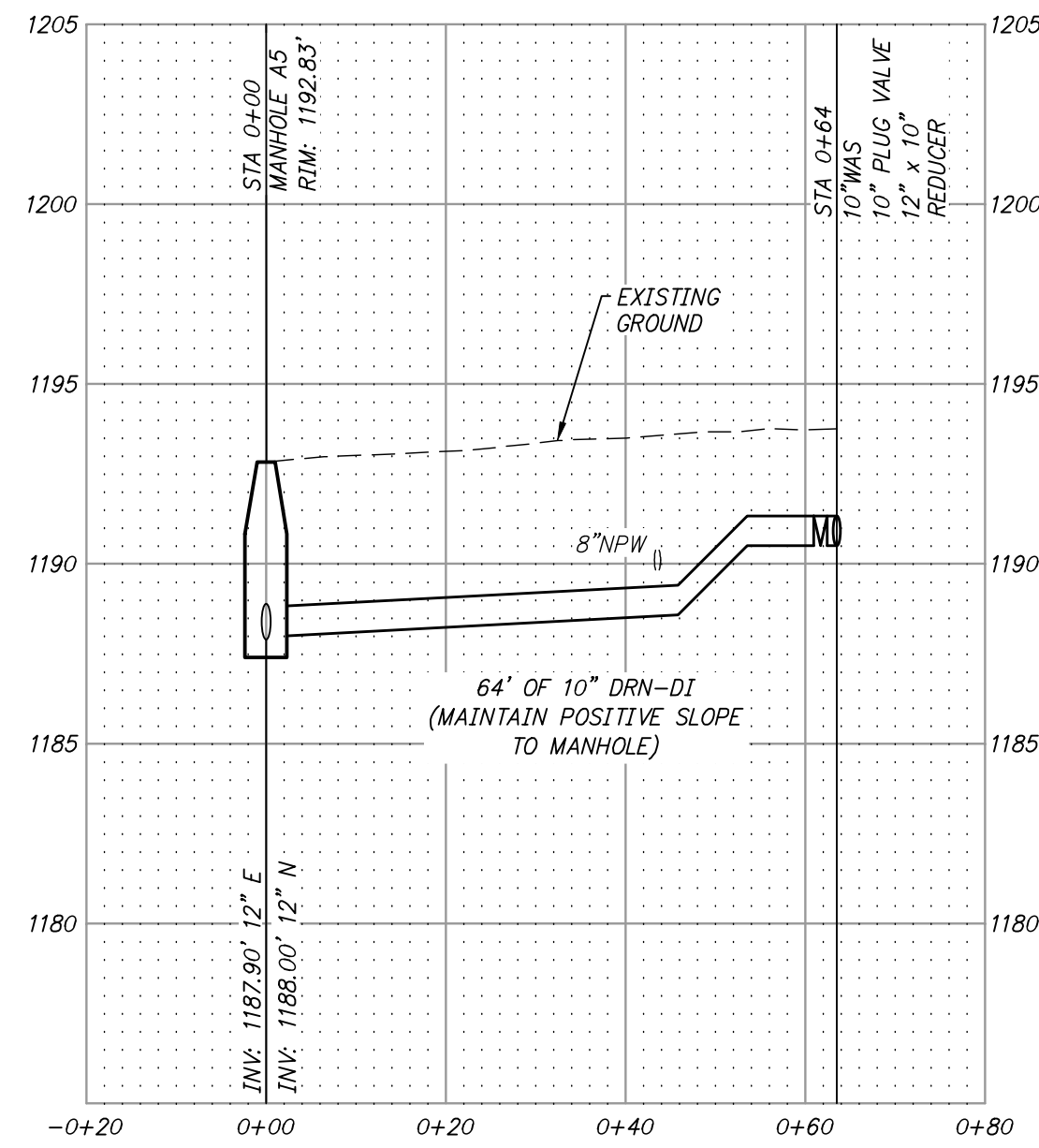
**WAS LINE "C"**  
**10" WAS-DI**  
**PROFILE 12**  
 H: 1"=20'; V: 1"=5'



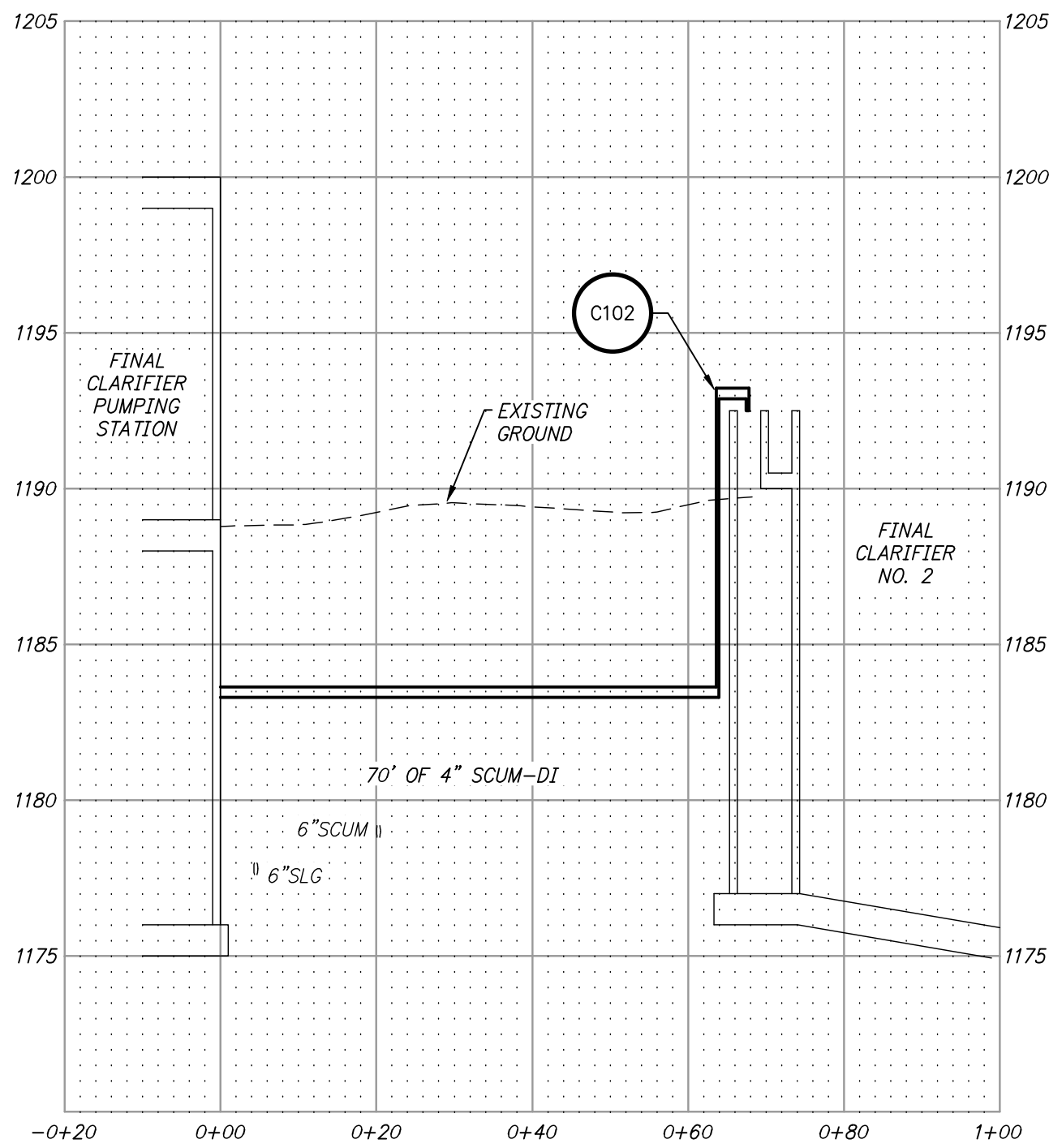
**RAS/WAS LINE "A"**  
**10" RAS/WAS-DI**  
**PROFILE 13**  
 H: 1"=20'; V: 1"=5'



**NON-POTABLE LINE "B"**  
**8" NPW-DI**  
**PROFILE 14**  
 H: 1"=20'; V: 1"=5'



**SLUDGE MIXING BOX DRAIN "A"**  
**10" DRN-DI**  
**PROFILE 15**  
 H: 1"=20'; V: 1"=5'



**FINAL CLARIFIER SCUM LINE "A"**  
**4" SCUM-DI**  
**PROFILE 16**  
 H: 1"=20'; V: 1"=5'

Z:\20\2020043 ROGERS SOLIDS HANDLING IMPROVEMENTS, PH 2\DRAWINGS\CONSTRUCTION DRAWINGS\WIP\C-11.DWG, 8/26/2024 11:10 AM, MATT WEIR, LAYOUT