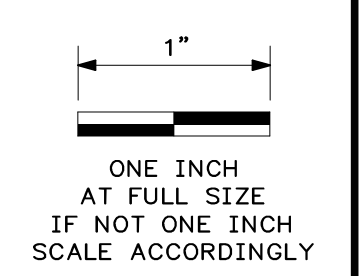
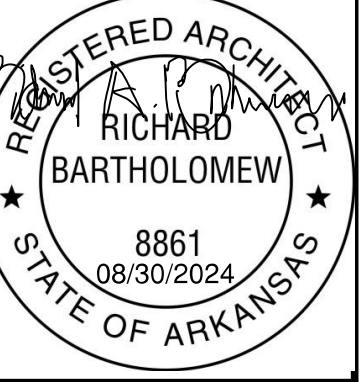


1. PREFINISHED METAL WALL PANELS
2. METAL GUTTER AND EAVE TRIM BY PEMB FABRICATOR
3. STEEL FRAMING PER PEMB FABRICATOR
4. GIRT PER PEMB FABRICATOR
5. STANDING SEAM METAL PANEL ROOF SYSTEM
6. PURLIN BY PEMB FABRICATOR
7. BATT INSULATION (R-19 MINIMUM), PER PEMB FABRICATOR
8. TWO FIBERGLASS INSULATION LAYERS (R-26 MINIMUM) INSTALL ONE LAYER OF FACED FIBERGLASS INSULATION BATTS (R-13 MINIMUM) DRAPED OVER PURLINS. THE SECOND IS FOR UNFACED FIBERGLASS INSULATION BATTS (R-13 MINIMUM) INSTALLED PARALLEL TO THE PURLINS. A MINIMUM R-3.5 THERMAL SPACER BLOCK IS PLACED ABOVE THE PURLIN/BATT AND THE ROOF DECK IS SECURED TO THE PURLINS BY THE PEMB FABRICATOR
9. CONCRETE SLAB ON GRADE - SEE STRUCTURAL DRAWINGS
10. GYPSUM BOARD ON 7/8" FURRING CHANNEL ATTACHED TO PEMB GIRTS
11. SHEET METAL TRIM, FLASHING AND DRIP EDGE, PER INSULATED METAL PANEL MANUFACTURER RECOMMENDATIONS
12. CEILING WHERE INDICATED ON CEILING PLAN
13. STEEL ANGLE SUPPORT BY PEMB FABRICATOR
14. RAKE TRIM PER PEMB FABRICATOR
15. EXISTING TO REMAIN STEEL FRAMING
16. NOT USED
17. EXISTING TO REMAIN PURLIN
18. EXISTING TO REMAIN CONCRETE SLAB ON GRADE
19. METAL LINER PANEL INTERIOR WALL FINISH
20. 2 LAYERS TYPE 'X' GYPSUM BOARD OVER 1 1/2" FURRING CHANNEL AT 24" OC MAX ATTACHED TO PEMB GIRTS PER UL DESIGN NUMBER W404
21. STEEL RAINSCREEN Z-CHANNEL
22. FINISH GRADING CONTOUR, SLOPE TO DRAIN AWAY FROM BUILDING - SEE CIVIL DRAWINGS
23. 3" EXPANSION JOINT FOAM SYSTEM
24. EXISTING STEEL WALL PANEL
25. SILL FLASHING AT NEW WALL PANEL
26. 1 HOUR FIRE-RATED SHAFT WALL, 1" TYPE-X GYPSUM BOARD @ EXTERIOR SIDE, 2 1/2" C-H SHAPED STUDS (FLOOR-TO-CEILING), 5/8" TYPE-X GYPSUM BOARD @ INTERIOR SIDE. REFER TO FIRE-RATED WALL ASSEMBLY DETAIL #U415
27. FIRESTOPPING, AS REQUIRED TO EXTEND THE WALL FIRE RATING UP TO THE BOTTOM OF THE ROOF DECK.
28. ROOF CURB EXPANSION JOINT MOUNTED ON STEEL PURLINS, PER ROOFING MANUFACTURER'S RECOMMENDATIONS.
29. COMPRESSIBLE FILLER JOINT.
30. 1 1/2" (R-6) MINERAL WOOL BATT INSULATION APPLIED AT STUD WALL CAVITY.



DATE	REVISION

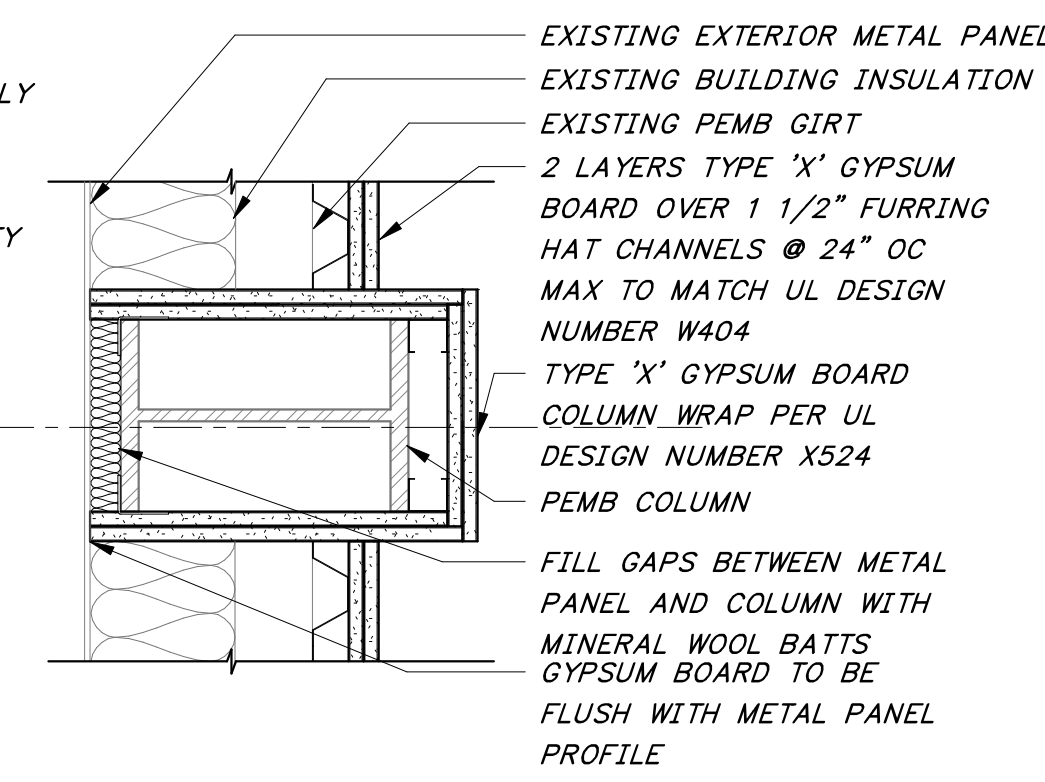


HAWKINS WEIR ENGINEERS, INC.
Black & Veatch Architects Arkansas, PLLC
Overland Park, Kansas
COA: LL209

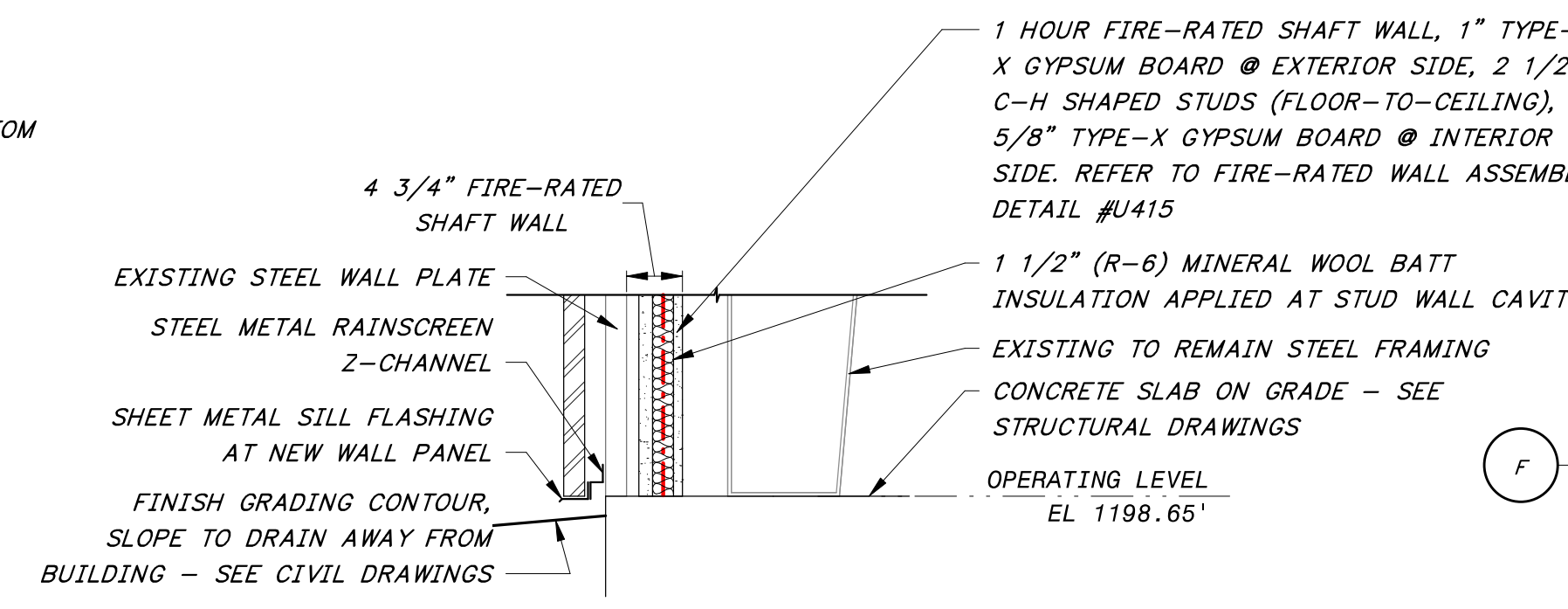


ROGERS, ARKANSAS
ROGERS POLLUTION CONTROL FACILITY (PCF)
SOLIDS HANDLING IMPROVEMENTS, PHASE II
SECTIONS
FOR: ROGERS WATER UTILITIES

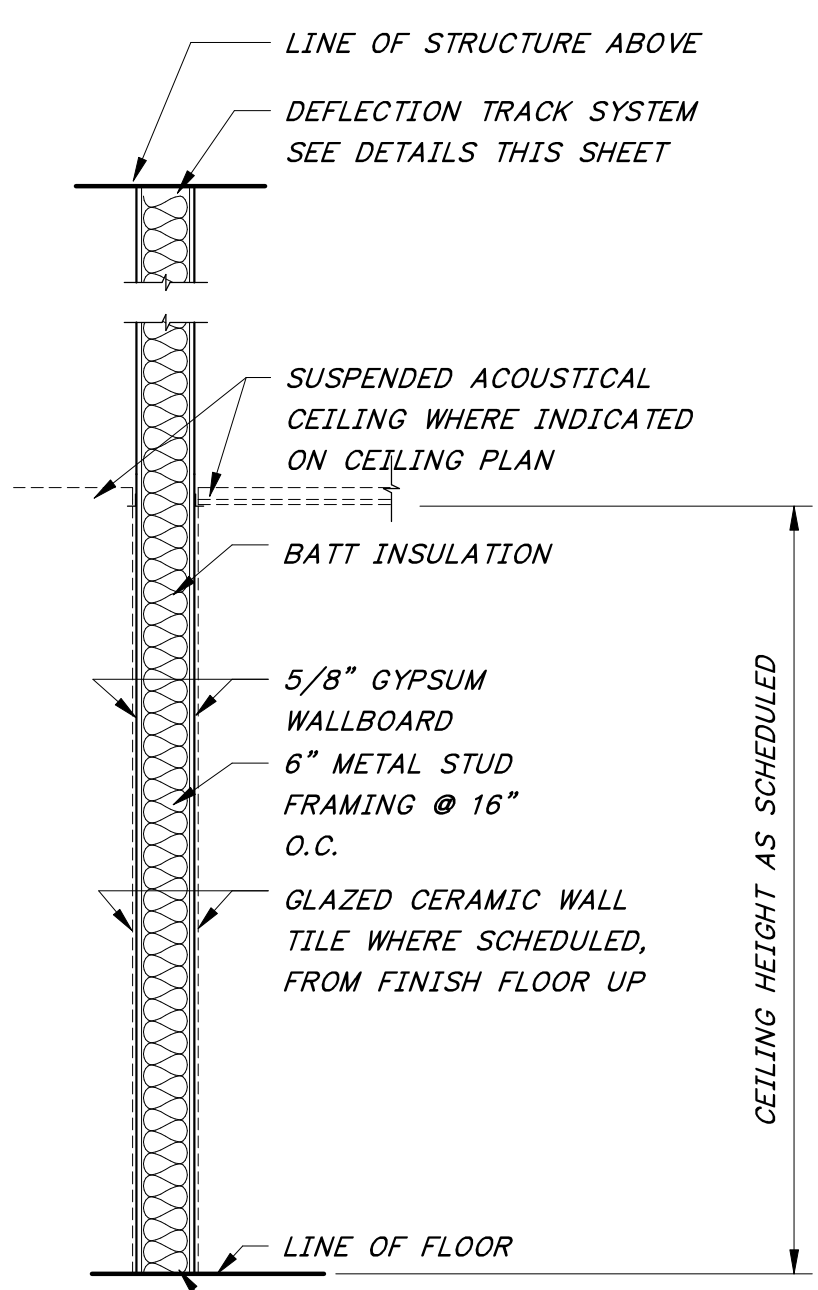
DATE: AUGUST 2024
SCALE: As indicated
DESIGNED BY: CAA
DRAWN BY: SJU
HWEI NO.: 2020043
FILENAME:
SHEET NO.
AB-05



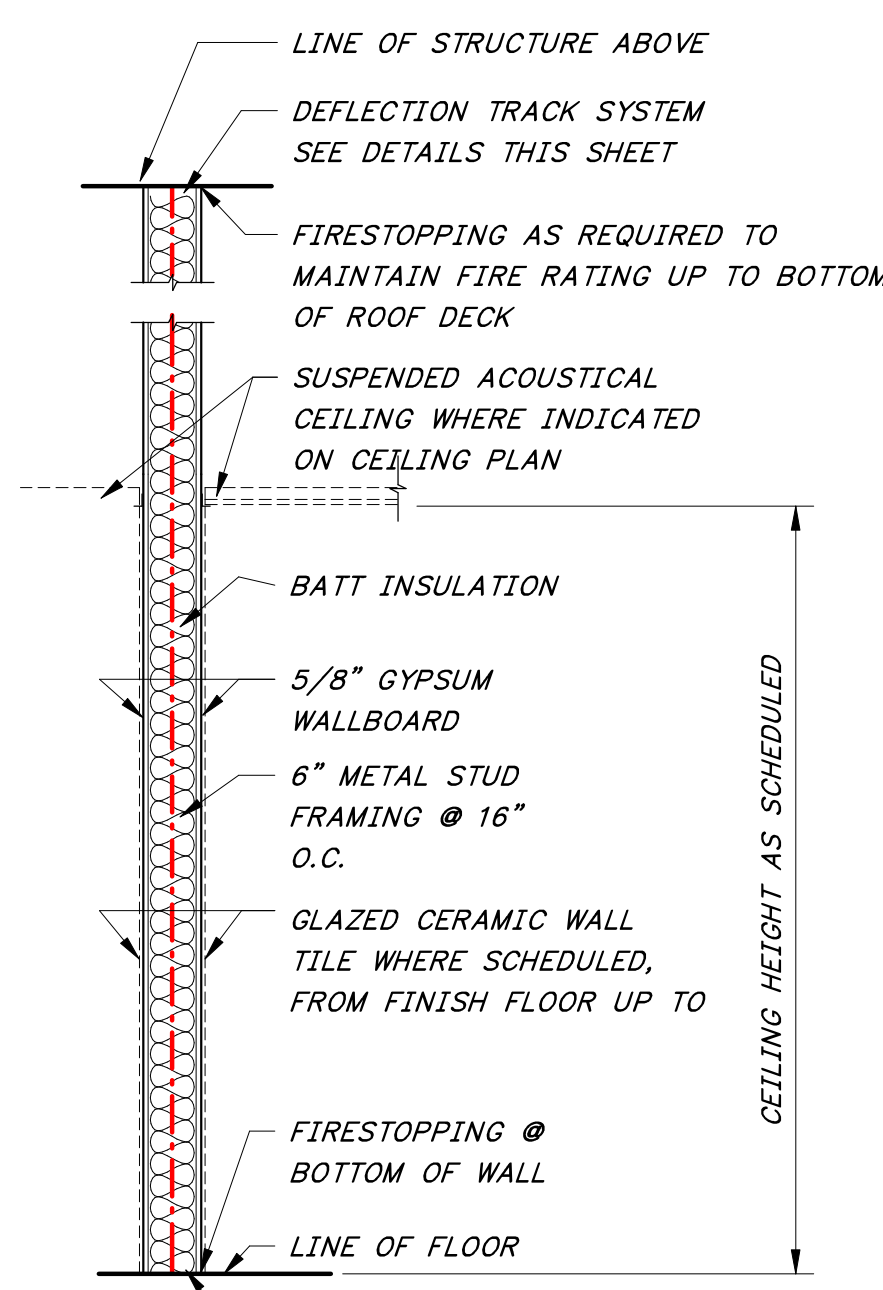
9 PLAN DETAIL
AB-02 1 1/2" = 1'-0"



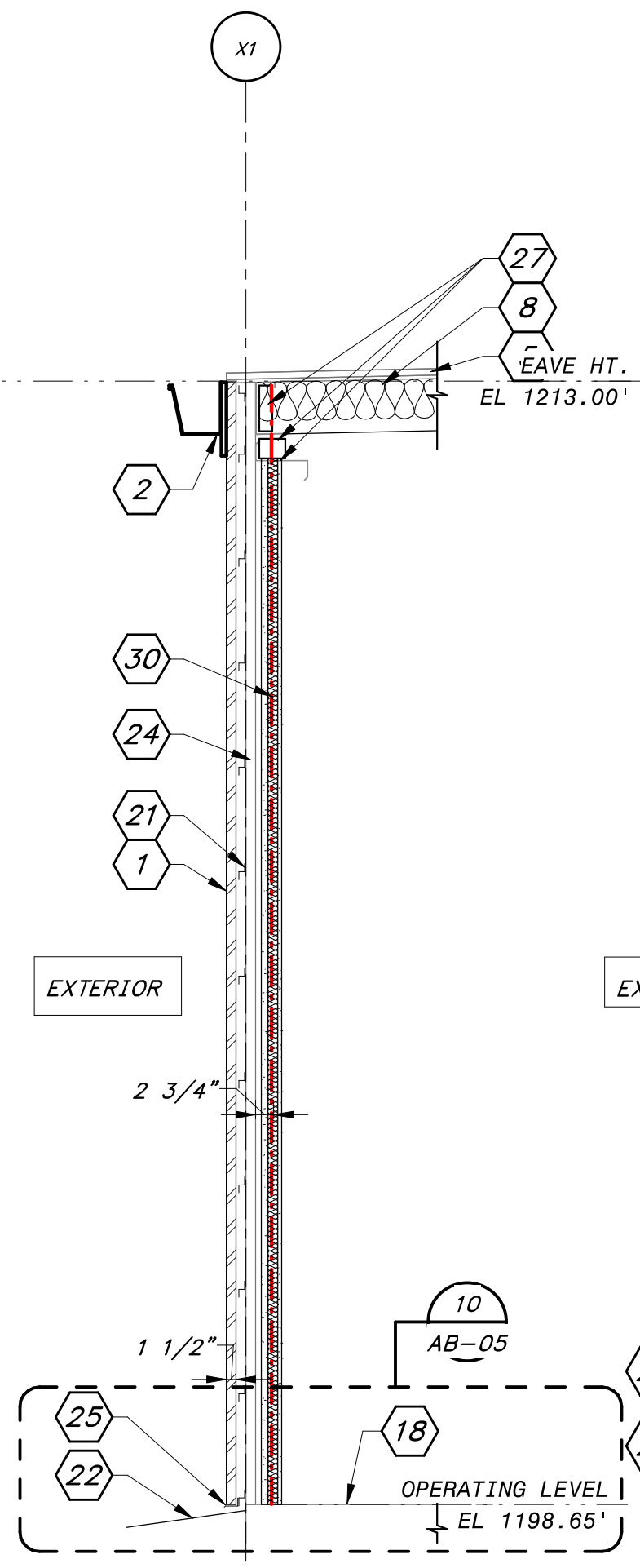
10 BASE OF WALL DETAIL-EXISTING BUILDING
AB-05 1" = 1'-0"



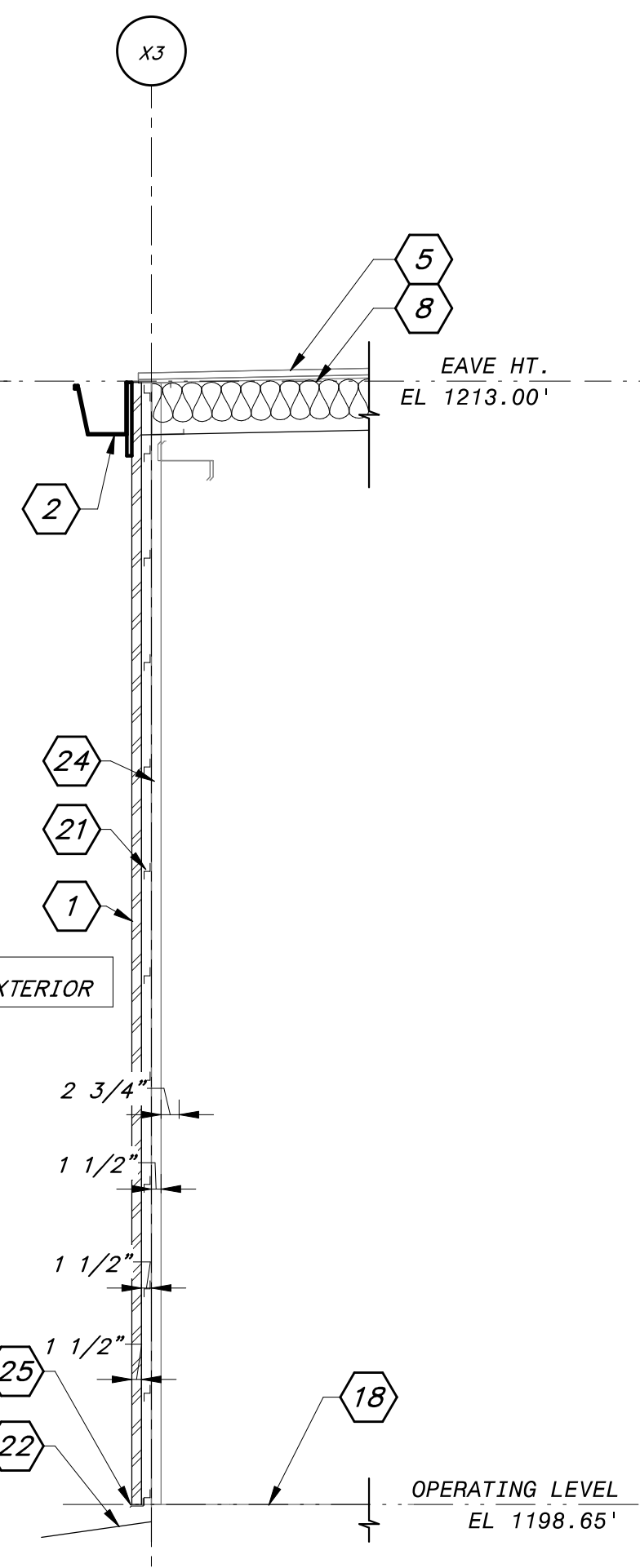
7 TYPICAL PARTITION WALL TYPE
AB-02 1/2" = 1'-0"



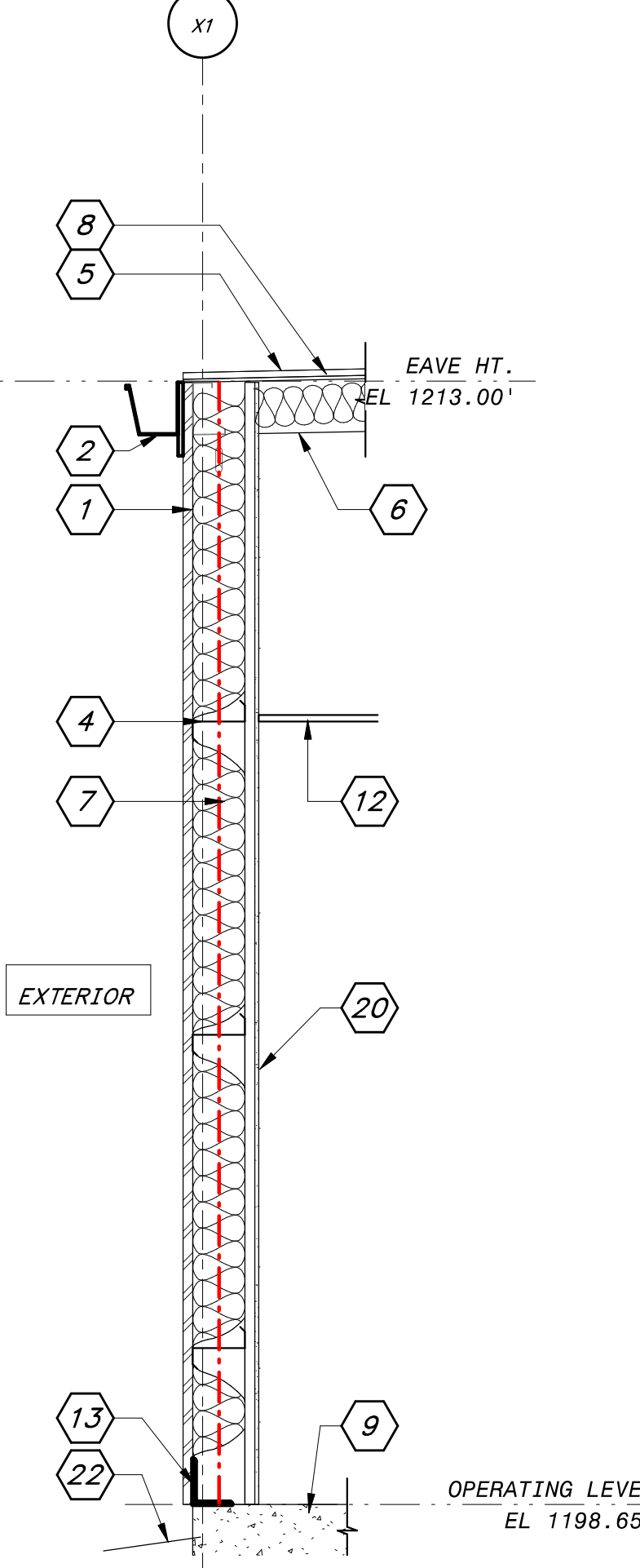
8 TYPICAL PARTITION WALL TYPE-1 HOUR FIRE-RATED
AB-02 1/2" = 1'-0"



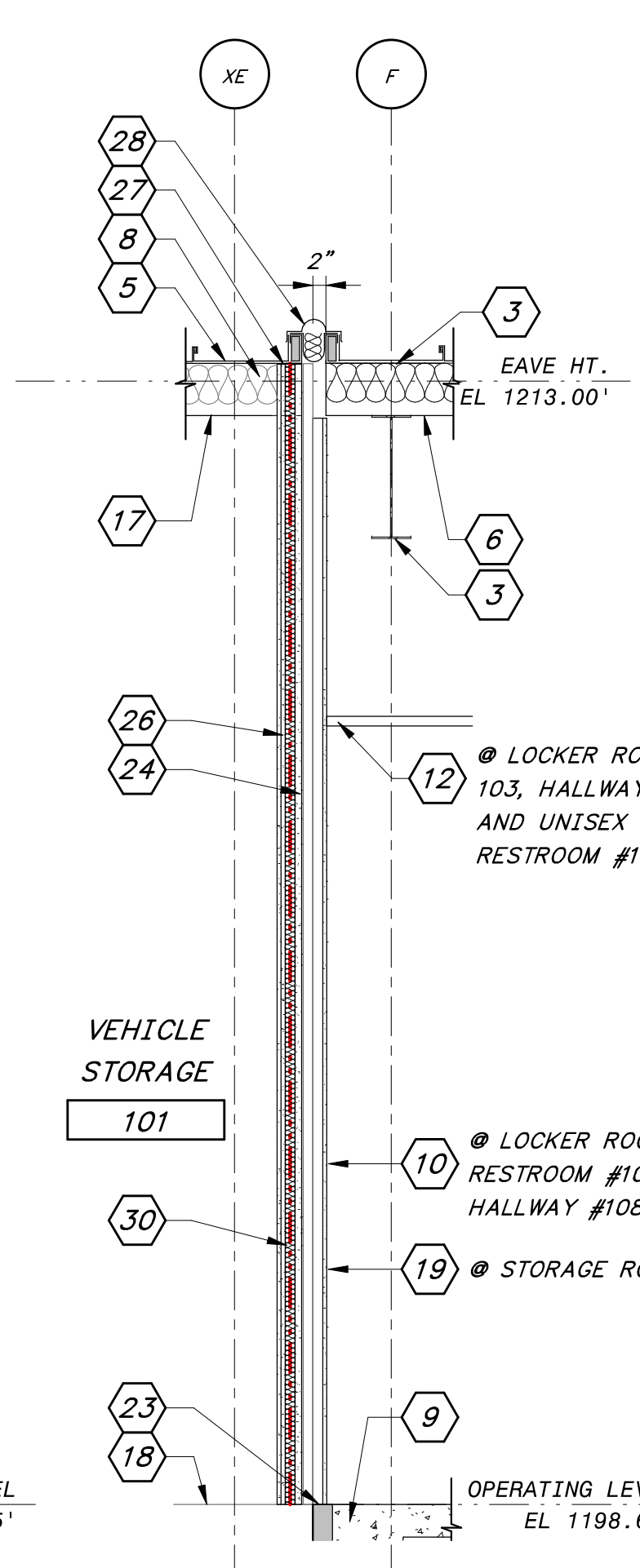
6 EAVE WALL SECTION
AB-02 1/2" = 1'-0"



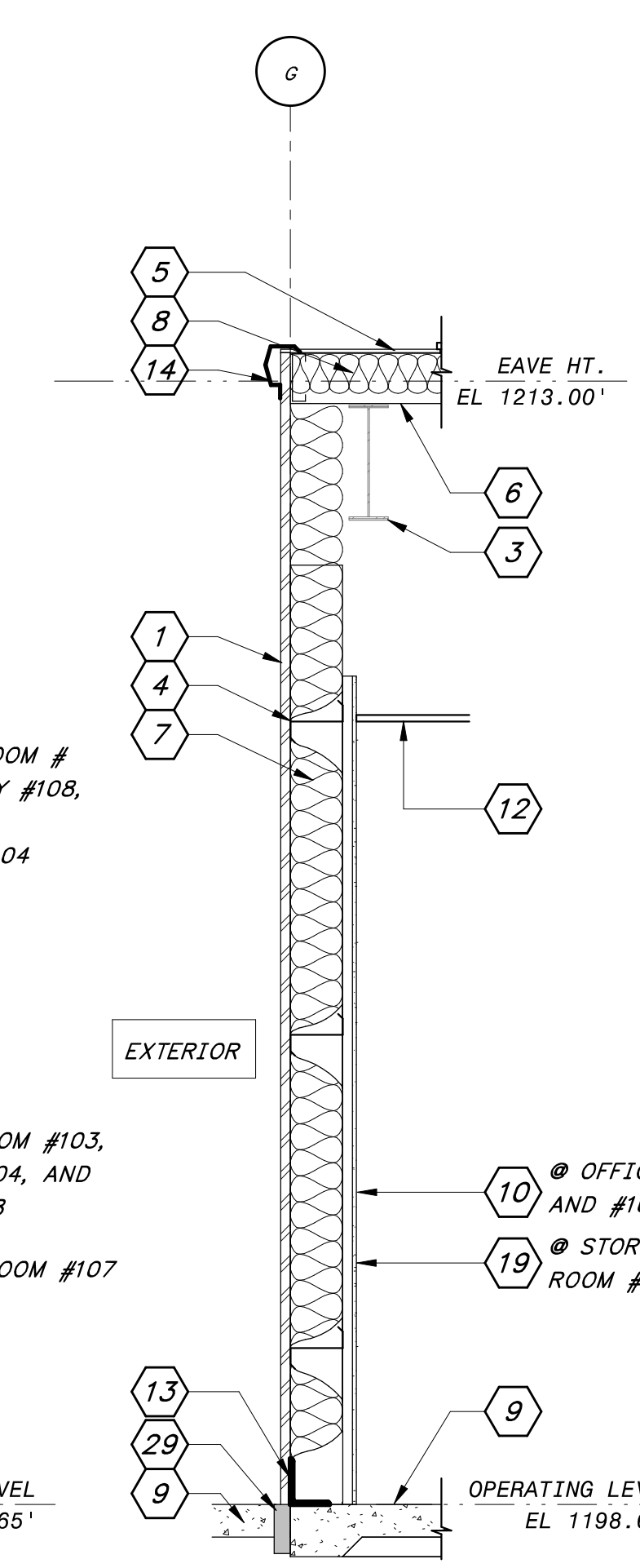
5 EAVE WALL SECTION
AB-02 1/2" = 1'-0"



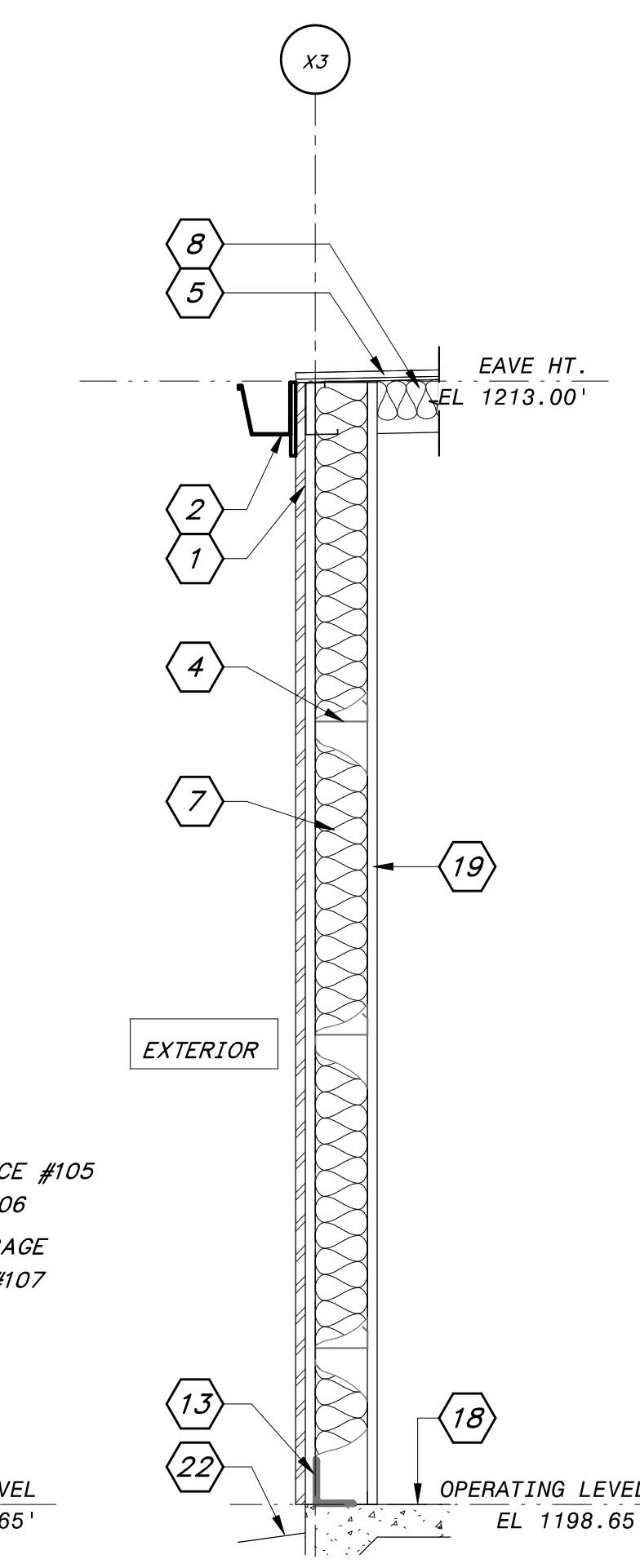
4 EAVE WALL SECTION
AB-02 1/2" = 1'-0"



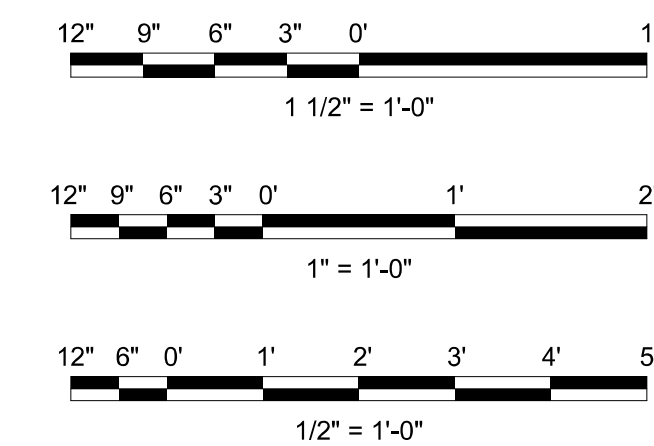
3 EXISTING/NEW BLDG WALL SECTION
AB-02 1/2" = 1'-0"



2 RAKE WALL SECTION
AB-02 1/2" = 1'-0"



1 EAVE WALL SECTION
AB-02 1/2" = 1'-0"



Autodesk Docs: //406493 - Rogers PCF Solids Phase 2/406493-Maintenance Building-BVrvr 8/27/2024 11:14:40 AM / SU / SECTIONS