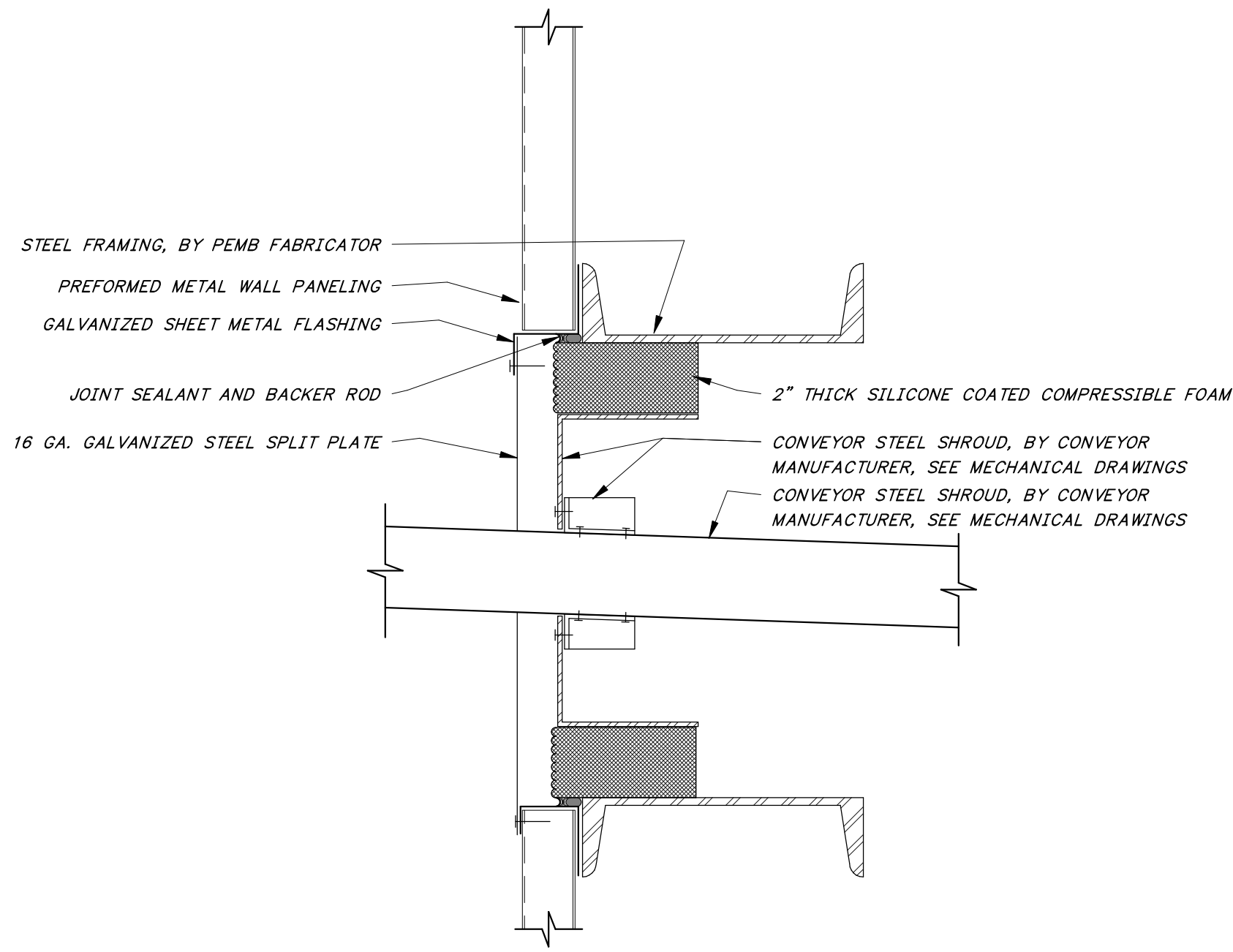
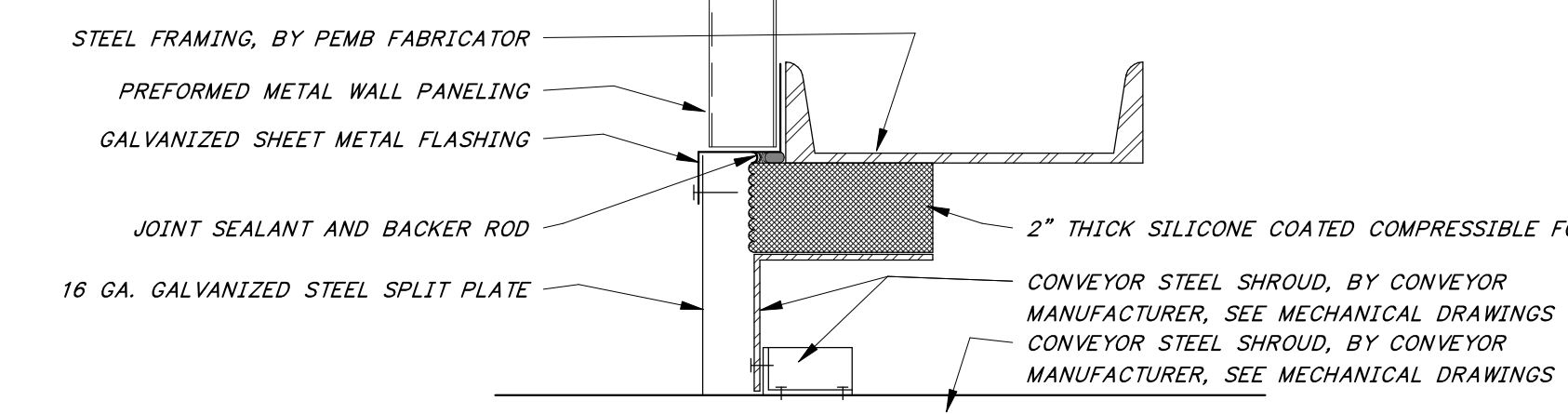


8/27/2024 11:18:26 AM / Author / DRYER BUILDING - DETAILS

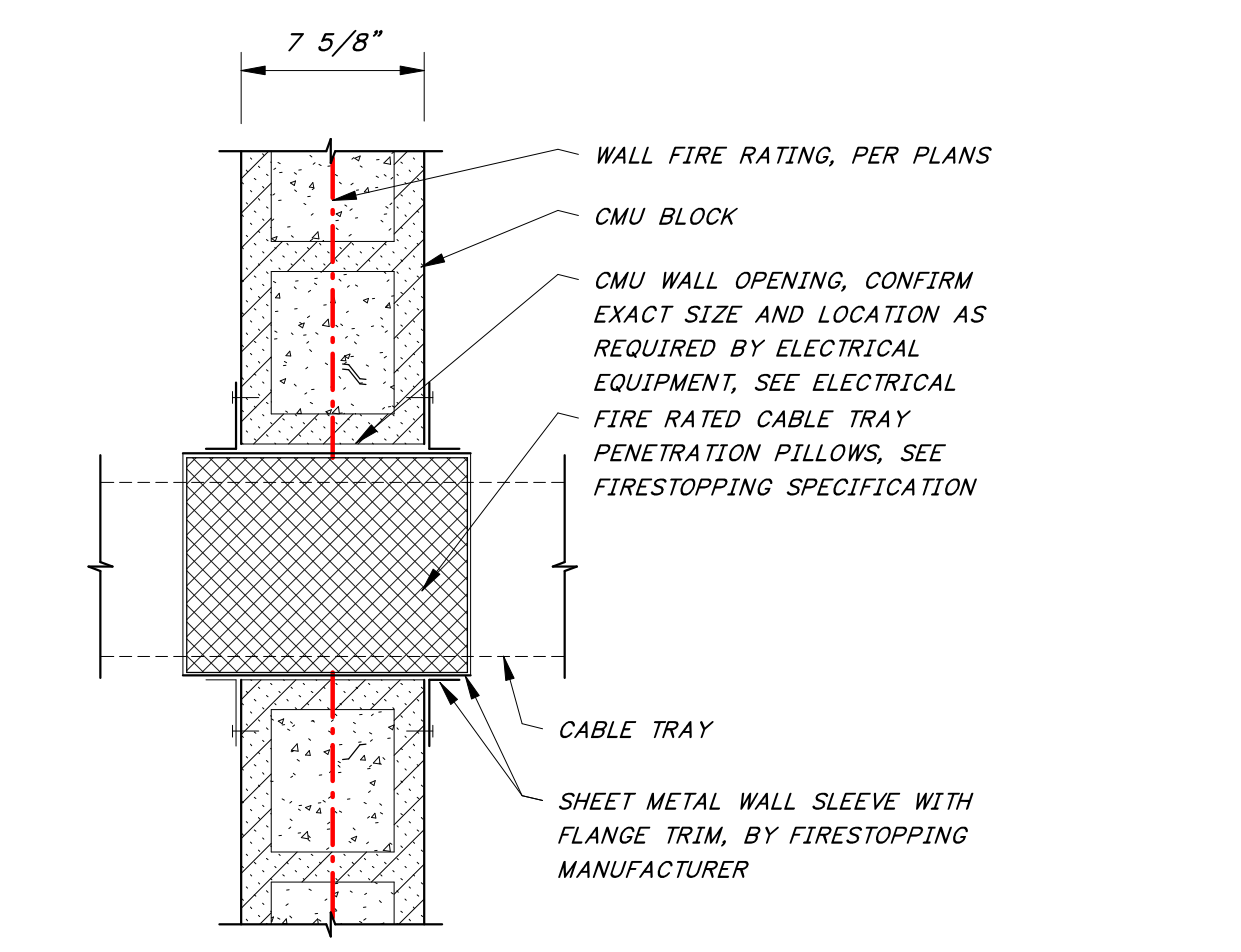
Autodesk Docs: //406493 - Rogers PCF Solids Phase 2/406493-Solids Building-BV.rvt



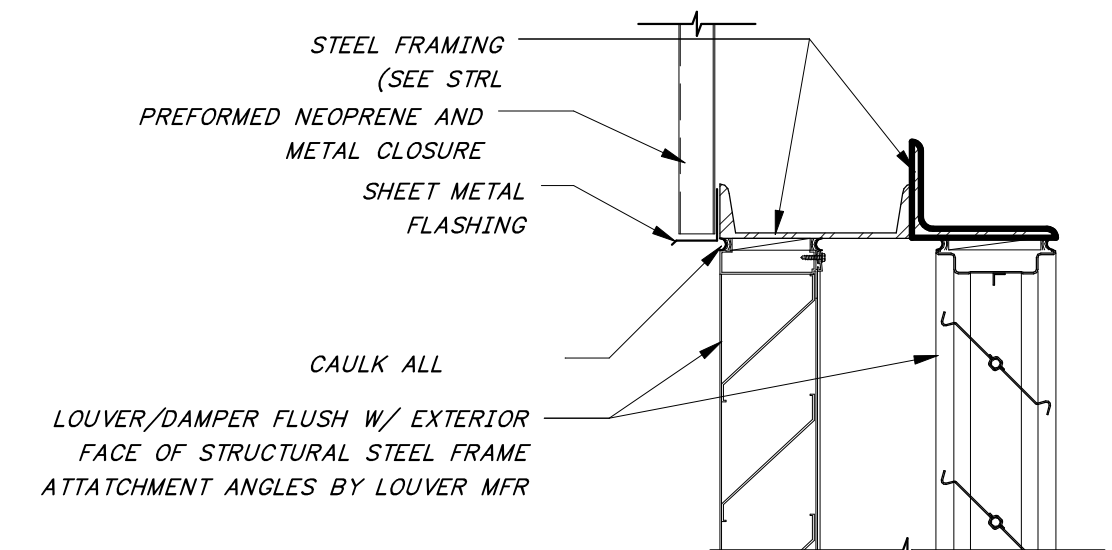
1 HEAD/SILL DETAIL @ CONVEYOR
3" = 1'-0"



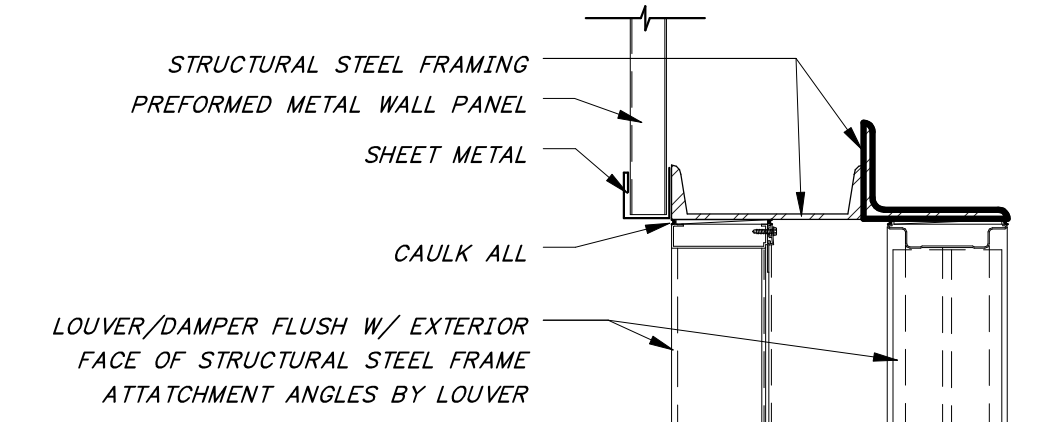
3 JAMB DETAIL @ CONVEYOR
3" = 1'-0"



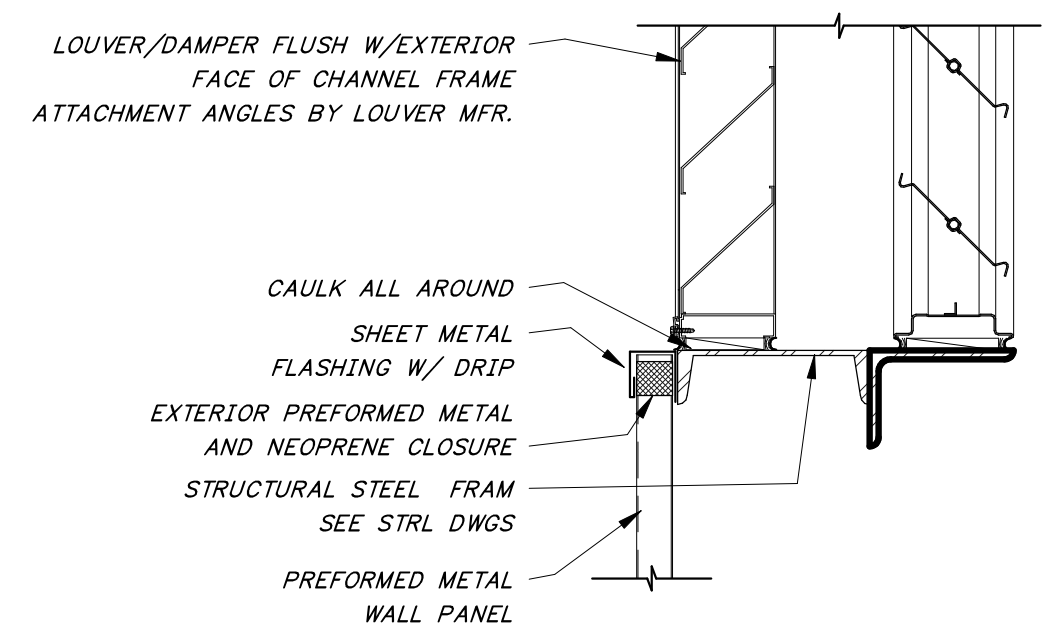
2 CABLE TRAY INTERIOR WALL PENETRATION-JAMB DETAIL
1 1/2" = 1'-0"



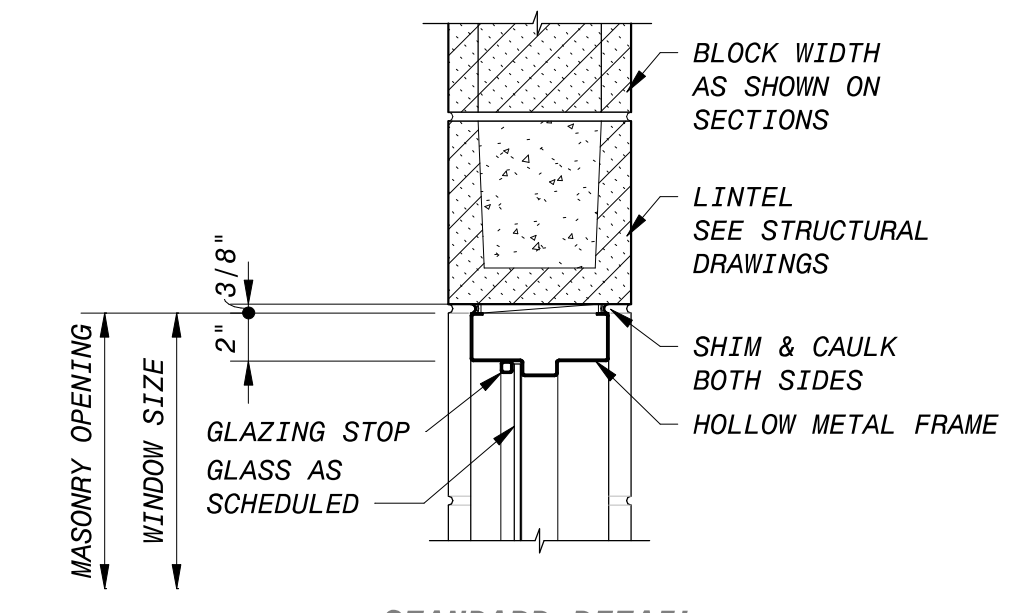
4 LOUVER - HEAD
1 1/2" = 1'-0"



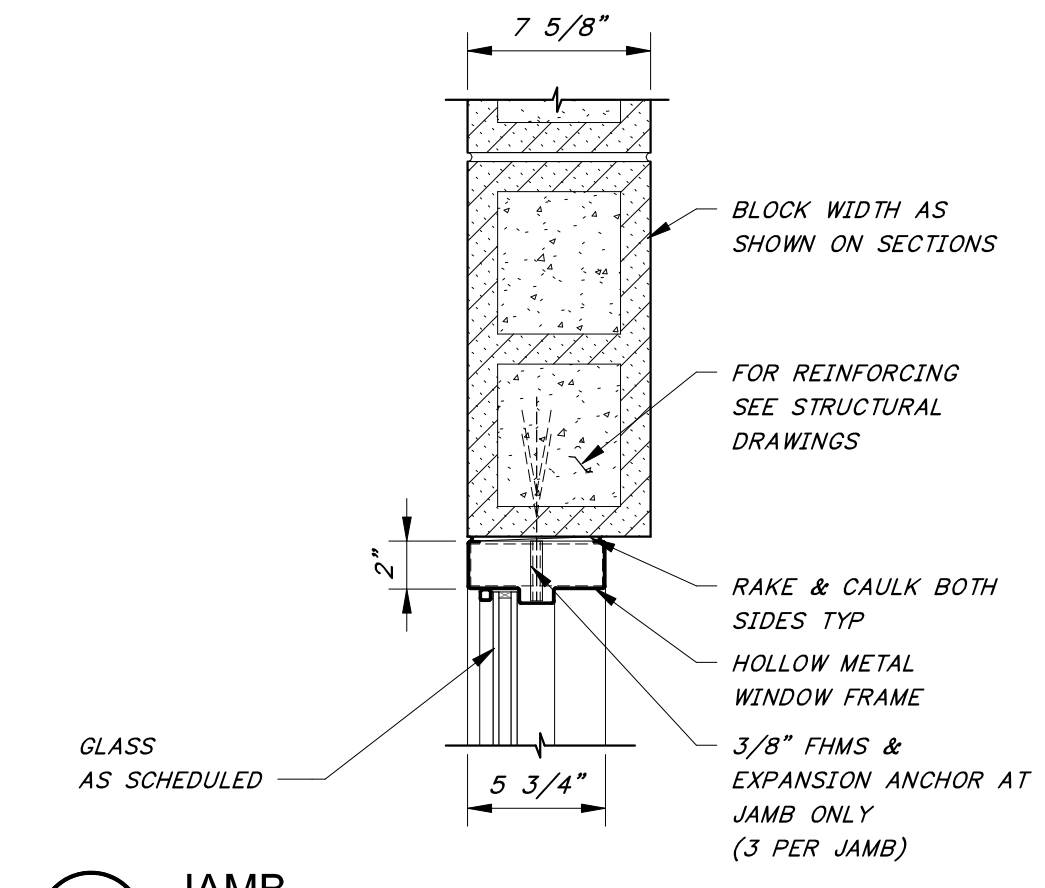
5 LOUVER - JAMB
1 1/2" = 1'-0"



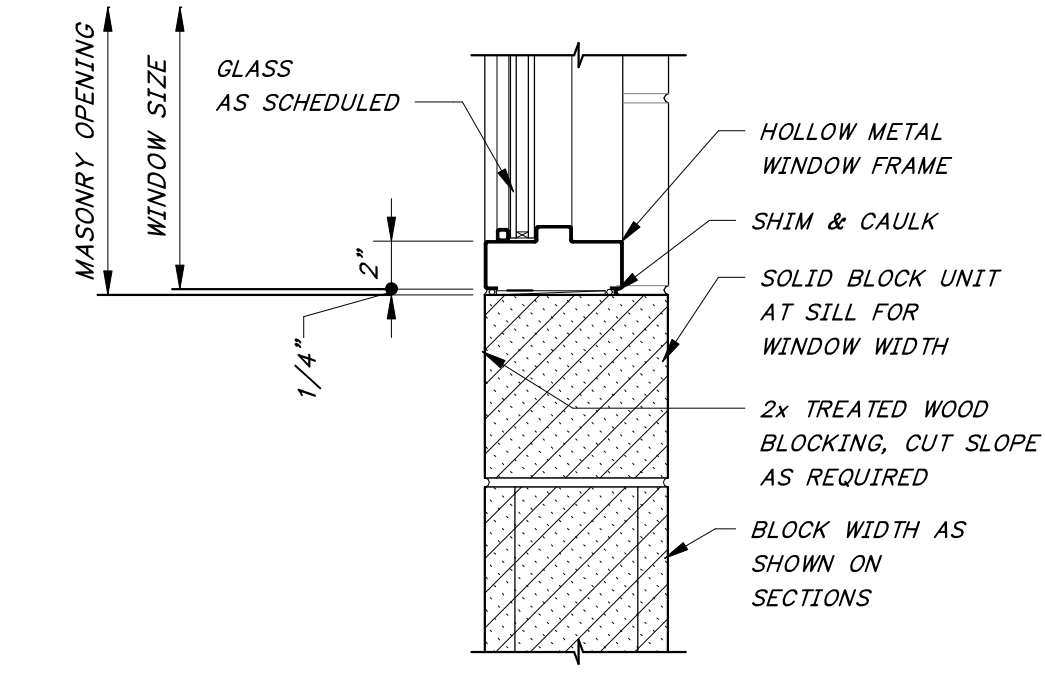
6 LOUVER - SILL
1 1/2" = 1'-0"



7 HEAD
1 1/2" = 1'-0"



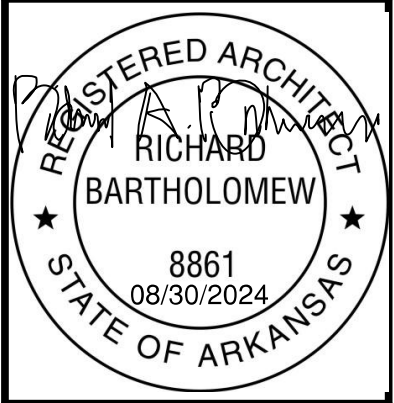
8 JAMB
1 1/2" = 1'-0"



9 SILL
1 1/2" = 1'-0"

1"
ONE INCH AT FULL SIZE IF NOT ONE INCH SCALE ACCORDINGLY

DATE	REVISION



HAWKINS WEIR ENGINEERS, INC.
Black & Veatch Architects Arkansas, PLLC
Overland Park, Kansas
COA: LL209

BLACK & VEATCH

ROGERS, ARKANSAS
ROGERS POLLUTION CONTROL FACILITY (PCF) SOLIDS HANDLING IMPROVEMENTS, PHASE II
DRYER BUILDING - DETAILS
FOR: ROGERS WATER UTILITIES

DATE: AUGUST 2024
SCALE: As indicated
DESIGNED BY: Designer
DRAWN BY: Author
HWEI NO.: 2020043
FILENAME:

SHEET NO.
AA-09