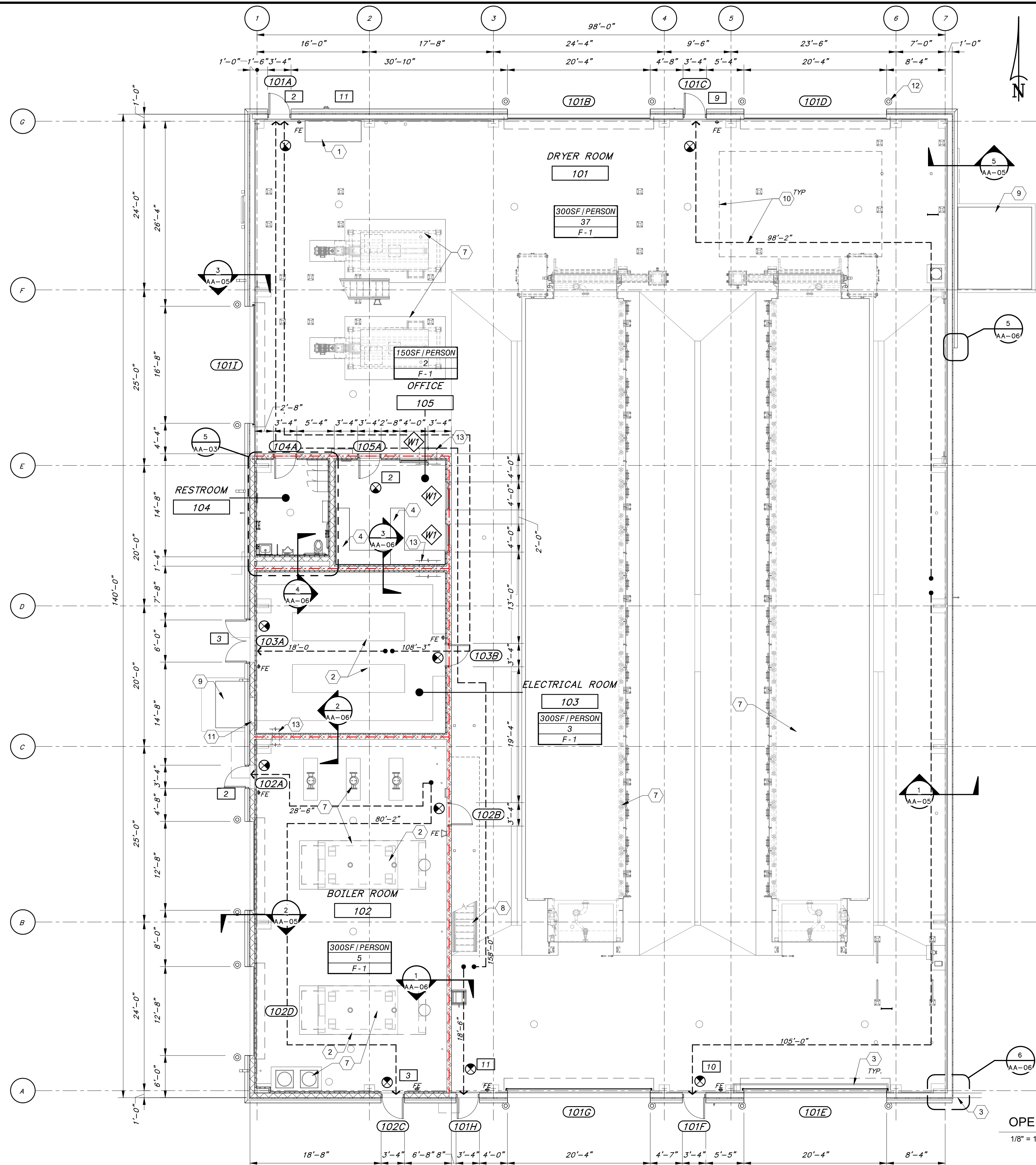


Autodesk Docs: //406493 - Rogers PCF Solids Phase 2/406493-Solids Building-BV.rvt 8/27/2024 11:19:59 AM / KMF / DRYER BUILDING - FLOOR PLAN, DRYER BUILDING LIFE SAFETY PLAN, AND BUILDING CODE ANALYSIS



OPERATING LEVEL - ARCHITECTURAL FLOOR PLAN
1/8" = 1'-0"

BUILDING CODE ANALYSIS

DRYER BUILDING	
APPLICABLE BUILDING CODES: -2021 ARKANSAS FIRE PREVENTION CODE VOL.II (2021 IBC w/ ARKANSAS AMENDMENTS) -2014 ARKANSAS ENERGY CODE (AEC)	
OCCUPANCY	GROUP F-1
ACTUAL HEIGHT	1 STORY (20.33 FT)
TYPE OF CONSTRUCTION	2B
ALLOWABLE/PROVIDED AREA	15,500 SF/14,000 SF
ALLOWABLE HEIGHT	2 STORIES (55 FT)
DESIGN OCCUPANT LOAD	47 PERSONS
ADA ACCESSIBILITY	PROVIDED AT OFFICE ROOM #105 PER IBC 1103.2.2 NOT REQUIRED AT EQUIPMENT AREAS, PER IBC 1103.2.
FIRE SPRINKLERS	- REQUIRED AND PROVIDED AT DRYER ROOM #101, (PER NFPA 820) - NOT REQUIRED AT REST OF BUILDING GIVEN THAT NO CONTINUOUS "FIRE AREAS" EXCEED 12,000 SQUARE FEET (PER IBC 903.2.4) EACH FIRE AREA IS SEPERATED BY A 2 HOUR FIRE RATED WALL.
FIRE SPRINKLERS	- REQUIRED AND PROVIDED AT DRYER ROOM #101, (PER NFPA 820) - NOT REQUIRED AT REST OF BUILDING (PER IBC 907.2.4)

GENERAL SHEET NOTES

- THE INTERIOR SIDE OF ALL EXTERIOR WALLS SHALL BE COVERED WITH A LINER PANEL LAPPING THE TOP SIDE OF THE CONCRETE WALLS BY 3" SIMILAR TO THE EXTERIOR PANELS AND ATTACHED TO THE INSIDE FACE OF THE GIRTS. LINER PANELS SHALL CONTINUE UP TO THE ROOF. LINER PANELS SHALL BE NOTCHED AT PEDESTALS.

SHEET KEYNOTES

- AUTOMATIC FIRE SPRINKLER RISER EQUIPMENT, SEE FIRE PROTECTION DRAWINGS.
- CONCRETE EQUIPMENT PAD.
- RETENTION WALL, SEE CIVIL DRAWINGS.
- OFFICE FURNITURE CUBICLE, BY OWNER.
- NOT USED.
- NOT USED.
- MECHANICAL EQUIPMENT, SEE MECHANICAL DRAWINGS.
- METAL STAIRWAY, SEE STRUCTURAL DRAWINGS.
- HVAC EQUIPMENT OVER CONCRETE PAD, SEE HVAC DRAWINGS.
- EQUIPMENT PLATFORM POST AND EQUIPMENT ABOVE.
- HVAC WALL PENETRATION, REFER TO EXTERIOR ELEVATIONS.
- BOLLARD, SEE CIVIL DRAWINGS, TYP.
- FIRE-RATED WALL PENETRATION AS REQUIRED FOR CABLE TRAY PENETRATION, SEE SHEET AA-09.

LIFE SAFETY LEGEND

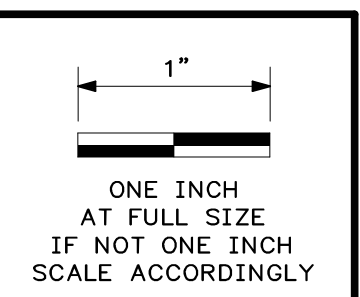
- FIRE EXTINGUISHER (FE)
- PATH OF EGRESS TRAVEL
- | |
|--------------|
| 100SF/PERSON |
| 1 |
| B |

 OCCUPANTS PER SF
OCCUPANT LOAD
OCCUPANCY CLASSIFICATION
- | |
|---|
| 1 |
|---|

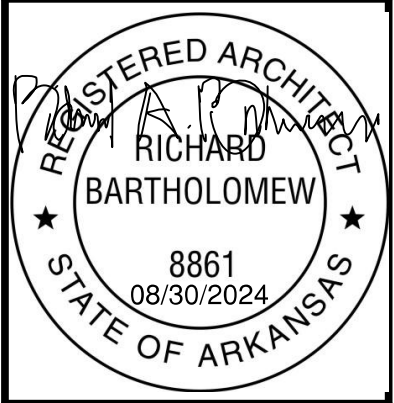
 CUMULATIVE OCCUPANT LOAD AT EXIT
- EXIT SYMBOL
- 3 HOUR FIRE BARRIER

ARCHITECTURAL SYMBOL LEGEND

- DOOR
- WINDOW



DATE	
REVISION	



HAWKINS WEIR ENGINEERS, INC.
Black & Veatch Architects Arkansas, PLLC
Overland Park, Kansas
COA: LL209

BLACK & VEATCH

ROGERS, ARKANSAS
ROGERS POLLUTION CONTROL FACILITY (PCF) SOLIDS HANDLING IMPROVEMENTS, PHASE II
DRYER BUILDING - FLOOR PLAN, DRYER BUILDING LIFE SAFETY PLAN, AND BUILDING CODE ANALYSIS
FOR: ROGERS WATER UTILITIES

DATE: AUGUST 2024
SCALE: As indicated
DESIGNED BY: CAA
DRAWN BY: KMF
HWEI NO.: 2020043

FILENAME:
SHEET NO.
AA-02

