



Hight Jackson
ASSOCIATES
5201 W Village Parkway, Suite 3001 Rogers, Arkansas 72768 | (479) 464-4965 | www.hjarch.com

A REMODEL AND ADDITION FOR
BENTON CO. DETENTION CENTER
BENTONVILLE, AR

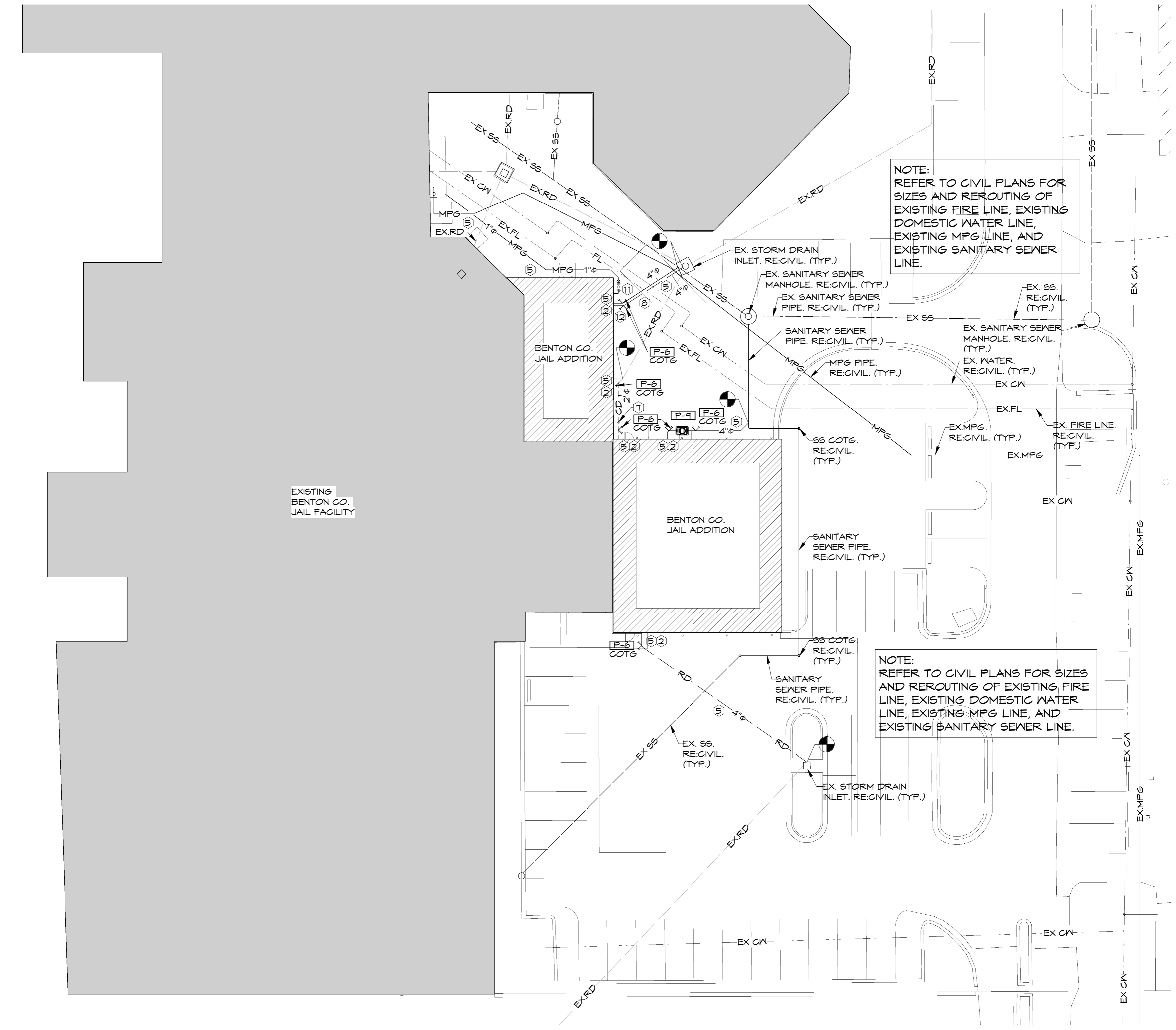
DRAWN BY:
AH
CHECK BY:
NEW
ISSUE DATE
06/10/2024

PROJECT NO.
2404

REVISION DATES
DATE DESCRIPTION

S H E E T
U2.1

COPYRIGHT 2024
THESE DRAWINGS AND SPECIFICATIONS
ARE THE EXCLUSIVE PROPERTY OF
HIGHT JACKSON ASSOCIATES P.A.
USE OR REPRODUCTION IS PROHIBITED
WITHOUT WRITTEN CONSENT



1 SITE UTILITY PLAN
1" = 20'-0"



NOTES:
RE:P1.1 FOR PLUMBING LEGEND, GENERAL AND KEYED NOTES, RE:P2.1 FOR PLUMBING FLOOR PLAN, RE:P3.1-P3.2 FOR PLUMBING DETAILS, RE:P5.1 FOR PLUMBING SCHEDULES.

HSA HSAEngineering
479 / 452 / 8922 office
7405 Ellis St.
Fort Smith, AR 72916
HSAConsultants.com

HSA JOB # 24-033

GENERAL PLUMBING NOTES

- ALL PLUMBING MATERIALS AND INSTALLATION SHALL COMPLY WITH THE ARKANSAS STATE PLUMBING CODE, LATEST EDITION.
- INSTALL ALL DOMESTIC HOT AND COLD WATER PIPING AS PER STATE AND LOCAL CODES.
- INSULATE ABOVE GRADE CONCEALED DOMESTIC HOT AND COLD WATER LINES PER SPECIFICATIONS, SECTION 22 07 19.
- INSTALL DEEP SEAL TRAPS AT ALL DRAIN CONNECTIONS.
- COORDINATE UNDER SLAB PIPING WITH COLUMNS AND FOOTINGS, REFER TO STRUCTURAL DRAWINGS.
- MINIMUM DEPTH OF COVER FOR WATER LINES IS 30 IN.
- BURY YELLOW COPPER TRACHEID WIRE IN TRENCH WITH ALL UNDER GROUND PLASTIC SERVICES. LEAVE ENDS EXPOSED FOR FUTURE LOCATION.
- PROVIDE AND INSTALL 6 IN. DIRT LEG AND GAS STOP (BALL VALVE ONLY) AT ALL EQUIPMENT GAS CONNECTIONS.
- ALL GAS PIPING SYSTEMS WITHIN A BUILDING AND OTHER ABOVE GROUND GAS PIPING SHALL BE ELECTRICALLY CONTINUOUS AND BONDED TO A GROUNDING ELECTRODE AS DEFINED IN N.F.P.A. TO.
- VERIFY LOCATION AND SIZE OF EXISTING SITE UTILITIES WITH UTILITY AUTHORITIES PRIOR TO CONSTRUCTION.
- ALL IMPROVEMENTS (PAVEMENTS, CURB AND GUTTER, SOD, ETC.) SHALL BE REPLACED BY GENERAL CONTRACTOR TO PRECONSTRUCTION CONDITION.
- WHERE FIRE RATED PARTITIONS OR FLOORS OCCUR, ALL FLOOR TO FLOOR AND ROOM TO ROOM PENETRATIONS SHALL BE PROPERLY FIRE SEALED WITH U.L. LISTED AND CLASSIFIED FIRE CAULK OR FIRE SEALED BY USING AN APPROVED FIRE SEAL SLEEVE METHOD WHICH MEETS U.L. REQUIREMENTS. ALL OTHER PENETRATIONS OF RATED CHASES OR WALLS SHALL BE PROPERLY FIRE SEALED AND WHERE EXTENDING THROUGH SUCH RATED SURFACE SHALL BE A RATED FIRE STOP PENETRATION. ALL FIRE STOPPING, FIRE CAULKING AND FIRE SLEEVING OR OTHER FIRE STOPPING SHALL BE ACCEPTABLE BY THE LOCAL AUTHORITIES AND SHALL BEAR THE U.L. LISTING.
- INSTALL DOMESTIC WATER AND GAS LINES TIGHT AGAINST BUILDING ROOF STRUCTURE.
- VERIFY LOCATION, INVERT AND SIZE OF ALL EXISTING UTILITIES PRIOR TO BEGINNING CONSTRUCTION.
- CONDENSATE PIPING FROM ROOF TOP AIR CONDITIONERS SHALL BE SCHEDULE 40 PVC. PROVIDE CONDENSATE TRAP, ROUTE CONDENSATE LINE TO NEAREST ROOF DRAIN.
- PROVIDE WEATHERPROOF PIPE BOOT WITH TPO MEMBRANE AS FLASHING AND STAINLESS STEEL CLAMPING RING FOR ALL GAS LINES PENETRATING THE ROOF.
- ALL MECHANICAL INSTALLATIONS SHALL CONFORM TO THE LATEST ACCEPTABLE ARKANSAS STATE MECHANICAL CODE.
- ALL WATER AND SEWER LINE MATERIALS AND INSTALLATION METHODS SHALL BE IN ACCORDANCE WITH THE CITY OF BENTONVILLE STANDARD SPECIFICATIONS FOR PUBLIC WORK CONSTRUCTION AS WELL AS THE ARKANSAS STATE PLUMBING CODE.
- HORIZONTAL BRANCHES SHALL CONNECT TO HORIZONTAL STACK OFFSETS AND TO THE BASES OF STACKS AT A POINT LOCATED NOT LESS THAN 10 PIPE DIAMETERS DOWNSTREAM FROM THE STACK.
- CONTRACTOR SHALL PROVIDE "AS BUILT" DRAWINGS OF ALL PLUMBING AND PIPING SYSTEMS UPON COMPLETION OF THE PROJECT.
- THE CONTRACTOR SHALL FAMILIARIZE HIMSELF WITH THE DRAWINGS, THE BUILDING SITE, AND OTHER INFORMATION PRESENTED FOR THE CONSTRUCTION OF THIS PROJECT. IF CONTRACTOR HAS QUESTIONS REGARDING ASSEMBLIES OR LAYOUTS WITH THE PROJECT HE SHALL MAKE THEM KNOWN TO THE ENGINEER IN WRITING PRIOR TO BIDDING THE PROJECT. CLAIMS MADE SUBSEQUENT TO THE BID WILL NOT BE ACCEPTED IF IT IS DETERMINED THAT PROPER FAMILIARIZATION COULD HAVE AVOIDED SUCH CLAIM.
- MECHANICAL CONTRACTOR SHALL COORDINATE INSTALLATION PLUMBING SITE UTILITIES WITH SITE WORK OF OTHER TRADES. IN INSTANCES WHERE COORDINATION REQUIRES DEVIATION FROM PLANS MECHANICAL CONTRACTOR SHALL NOTIFY ENGINEER OF PROPOSED CHANGES.
- COMPLY WITH STATE OF ARKANSAS ADOPTED ADA ACCESSIBLE GUIDELINES IN REGARD TO ACCESSIBLE FEATURES
- PROVIDE DRIP PAN FOR ENTIRE LENGTH OF PIPE WHERE PIPE MUST BE INSTALLED ABOVE ELECTRICAL EQUIPMENT.
- DO NOT ROUTE GROUPS OF CONDUIT, PIPES, AND SLEEVES ABOVE FOOTINGS UNLESS NOTED TO DO SO. IF CONFLICT OCCURS, CONSULT ARCHITECT/ENGINEER
- LIMIT WIDTH OF CONDUIT, PIPES AND SLEEVES NOT TO EXCEED 3 FEET IN WIDTH AS IT PASSES UNDER WALL FOOTING. AS MUCH AS POSSIBLE ALIGN THE ITEMS PERPENDICULAR TO THE FOOTING AS IT PASSES BELOW FOOTING.
- PROVIDE A MINIMUM SPACING OF 2 FEET BETWEEN CONDUIT OR PIPE GROUPS AS ITEMS PASS UNDER FOOTINGS.
- DO NOT ROUTE CONDUITS, PIPE OR SLEEVES UNDER COLUMN FOOTINGS OR PAD FOOTINGS.
- MECHANICAL CONTRACTOR MUST REVIEW ALL ARCHITECTURAL DRAWINGS FOR EXACT LOCATION OF PLUMBING FIXTURES, ROOF OVERFLOW AND FLOOR DRAINS. IF PLUMBING FIXTURES OR DRAINS ARE SHOWN ON THE ARCHITECTURAL DRAWINGS THEY MUST BE INCLUDED IN THE CONTRACT EVEN IF NOT SHOWN ON THE MECHANICAL DRAWINGS.
- WHERE THE BUILDING SEWER IS INSTALLED WITHIN 10 FEET OF THE WATER SERVICE THE WATER SERVICE PIPE SHALL BE A MINIMUM OF 12 INCHES ABOVE THE TOP OF THE HIGHEST POINT OF THE SEWER. REQUIRED SEPARATION DISTANCE SHALL NOT APPLY WHERE A WATER SERVICE PIPE CROSSES A SEWER PIPE IS SLEEVED 10 FEET HORIZONTALLY FROM THE SEWER PIPE CENTERLINE ON BOTH SIDES OF SUCH PIPE CROSSINGS.
- DO NOT SCALE DIRECTLY FROM THE PLUMBING DRAWINGS. REFER TO ARCHITECTURAL DRAWINGS FOR ALL DIMENSIONAL INFORMATION.
- ALL PLUMBING SANITARY WASTE AND VENT PIPING INSTALLED IN FIRE RATED WALLS OR PLENUM RETURN AIR SYSTEMS SHALL BE CAST IRON. REFER TO ARCHITECTURAL PLANS FOR LIFE SAFETY INFORMATION.

PLUMBING KEYED NOTES

- INSTALL AN APPROVED TRAP GUARD PRODUCT THAT CONFORMS TO NSF-14, CSA B602-99 AND CSA B74-94.
- COORDINATE UNDERSLAB PIPING WITH STRUCTURAL FOOTINGS. REFER TO STRUCTURAL PLANS FOR LOCATIONS AND SIZES OF FOOTINGS.
- PROVIDE AND INSTALL 6 INCH DIRT LEG AND GAS STOP (BALL VALVE ONLY) AT ALL EQUIPMENT GAS CONNECTIONS. REFER TO DETAIL T/P3.1.
- MECHANICAL CONTRACTOR SHALL NOT INSTALL ANY WATER LINES ABOVE ELECTRICAL PANELS. REFER TO ELECTRICAL PLANS FOR PANEL LOCATIONS.
- IDENTIFY OUTDOOR UNDERGROUND LINES WITH CONTINUOUS STRIP OF PLASTIC UTILITY MARKER. TAPE SHOULD STATE AT REGULAR INTERVALS: "CAUTION (STATE UTILITY) PIPE BELOW". INSTALL TAPE ONE FOOT DIRECTLY ABOVE PIPE BEFORE BACKFILLING TO GRADE.
- CONTROL PANEL FOR SLICK STICK OIL LEVEL MONITORING SYSTEM FOR P-9. COORDINATE CONDUIT TO P-9 TANK WITH ELECTRICAL CONTRACTOR.
- PROVIDE RELIEF POPPER PRIOR TO 2" CD CONNECTION TO BELOW GRADE STORM DRAIN SYSTEM. RE:2/P3.2 FOR DETAIL.
- TOP OF NEW SANITARY SEWER PIPE TO BE ROUTED A MINIMUM OF 18" BELOW BOTTOM OF RELOCATED WATER AND FIRE LINES. REFER TO CIVIL FOR EXACT ROUTING OF WATER AND FIRE LINES.
- MAINTAIN A MINIMUM OF 10 FT. CLEARANCE BETWEEN ALL EXHAUST OUTLETS, FLUES, PLUMBING VENTS AND ANY FRESH AIR INTAKES. IF 10 FT. CLEARANCE CAN NOT BE MAINTAINED EXHAUST OUTLET, FLUE, OR VENT MUST TERMINATE AT A POINT AT LEAST 36 IN. ABOVE HIGHEST FRESH AIR INTAKE WITHIN 10 FT. LIMIT.
- MECHANICAL CONTRACTOR SHALL INSTALL ALL EQUIPMENT, FANS AND APPLIANCES A MINIMUM OF 10 FEET FROM A ROOF EDGE OR OPEN SIDE WHERE SUCH EDGE OR OPEN SIDE IS GREATER THAN 30 INCHES ABOVE A FLOOR, ROOF OR GRADE BELOW. GUARD RAILS A MINIMUM OF 42 INCHES THE ELEVATED SURFACE SHALL BE PROVIDED AND INSTALLED BY THE GENERAL CONTRACTOR AND EXTENDED A MINIMUM OF 30 INCHES BEYOND EACH END OF SUCH EQUIPMENT, FAN OR APPLIANCE WHERE APPLIANCES, EQUIPMENT, FANS OR OTHER COMPONENTS ARE LOCATED WITHIN THE REQUIRED 10 FOOT CLEARANCE REQUIREMENT. THE GUARD SHALL BE CONSTRUCTED SO AS TO PREVENT THE PASSAGE OF A 21 INCH DIAMETER SPHERE AND COMPLY WITH THE LOADING REQUIREMENTS FOR GUARDS SPECIFIED IN THE LATEST ACCEPTED INTERNATIONAL BUILDING CODE.
- GAS REGULATOR EQUAL TO EQUIMETER MODEL 243. INLET PRESSURE @ 5 PSI, SET OUTLET PRESSURE @ 11 IN. W.C. ESTIMATED CONNECTED LOAD = 390 MBH. ESTIMATED L_{250'}.
- INVERT OF 4" SS AT EXIT LOCATION IS 64" BELOW FINISHED FLOOR.
- ROUTE 2" GAS PIPING UP THROUGH EXTERIOR WALL AT 1/4" 3'-0" ABOVE FINISHED GRADE. SEAL PIPE PENETRATION WATER TIGHT. ROUTE 2" GAS PIPING UP INSIDE WALL TO ELEVATION ABOVE CEILING IN TOILET 113.

PLUMBING LEGEND

	SANITARY WASTE PIPING
	EXISTING SANITARY WASTE PIPING
	OIL COLLECTION SANITARY WASTE PIPING
	VENT PIPING
	EXISTING VENT PIPING
	COLD WATER PIPING
	EXISTING COLD WATER PIPING
	HOT WATER PIPING
	EXISTING HOT WATER PIPING
	HOT WATER RETURN PIPING
	MEDIUM PRESSURE GAS PIPING (5 PSIG)
	LOW PRESSURE GAS PIPING (11 IN. W.C.)
	EXISTING MEDIUM PRESSURE GAS PIPING
	EXISTING LOW PRESSURE GAS PIPING
	CONDENSATE DRAIN PIPING
	ROOF DRAIN PIPING
	OVER FLOW DRAIN PIPING
	STORM DRAIN PIPING
	BALL VALVE
	CHECK VALVE
	GAS REGULATOR EQUAL TO EQUIMETER MODEL 243. INLET PRESSURE @ 5 PSI, SET OUTLET PRESSURE @ 11 IN. W.C.
	GAS BALL VALVE
	CONNECTION POINT
	WATER HAMMER ARRESTOR (SIZE PER MANUFACTURER'S RECOMMENDED FIXTURE UNIT CAPACITY)
	REFER TO KEYED NOTES
	PLUMBING FIXTURE NUMBER (REFER TO PLUMBING FIXTURE SCHEDULE)
	CLEAN OUT TO GRADE
	FLOOR DRAIN
	FLOOR SINK
	FREEZE PROOF HOSE BIB
	HOSE BIB
	ACCESSIBLE
	HUB DRAIN
	WALL CLEAN OUT
	WATER HEATER
	SANITARY SEWER
	ROOF DRAIN



Hight Jackson
ASSOCIATES
5201 W Village Parkway, Suite 3001 Rogers, Arkansas 72761 (479) 464-4965 | www.hjarch.com

A REMODEL AND ADDITION FOR
BENTON CO. DETENTION CENTER
BENTONVILLE, AR

DRAWN BY:

AH

CHECK BY:

NEW

ISSUE DATE

06/10/2024

PROJECT NO.

2404

REVISION DATES

DATE DESCRIPTION

#

HSA HSAEngineering
479 / 452 / 8922 office
7405 Ellis St.
Fort Smith, AR 72916
HSAConsultants.com

NOTES:
RE:P.2.1 FOR PLUMBING PLANS. RE:P.3.1-P.3.2 FOR PLUMBING DETAILS. RE:P.5.1 FOR PLUMBING SCHEDULES.

S H E E T

P.1.1

COPYRIGHT 2024

THESE DRAWINGS AND SPECIFICATIONS ARE THE EXCLUSIVE PROPERTY OF HIGHT JACKSON ASSOCIATES P.A. USE OR REPRODUCTION IS PROHIBITED WITHOUT WRITTEN CONSENT.

HSA JOB # 24-033



Hight Jackson
ASSOCIATES
5201 W Village Parkway, Suite 300 | Rogers, Arkansas 72768 | (479) 464-4965 | www.hjarch.com

A REMODEL AND ADDITION FOR
BENTON CO. DETENTION CENTER
BENTONVILLE, AR

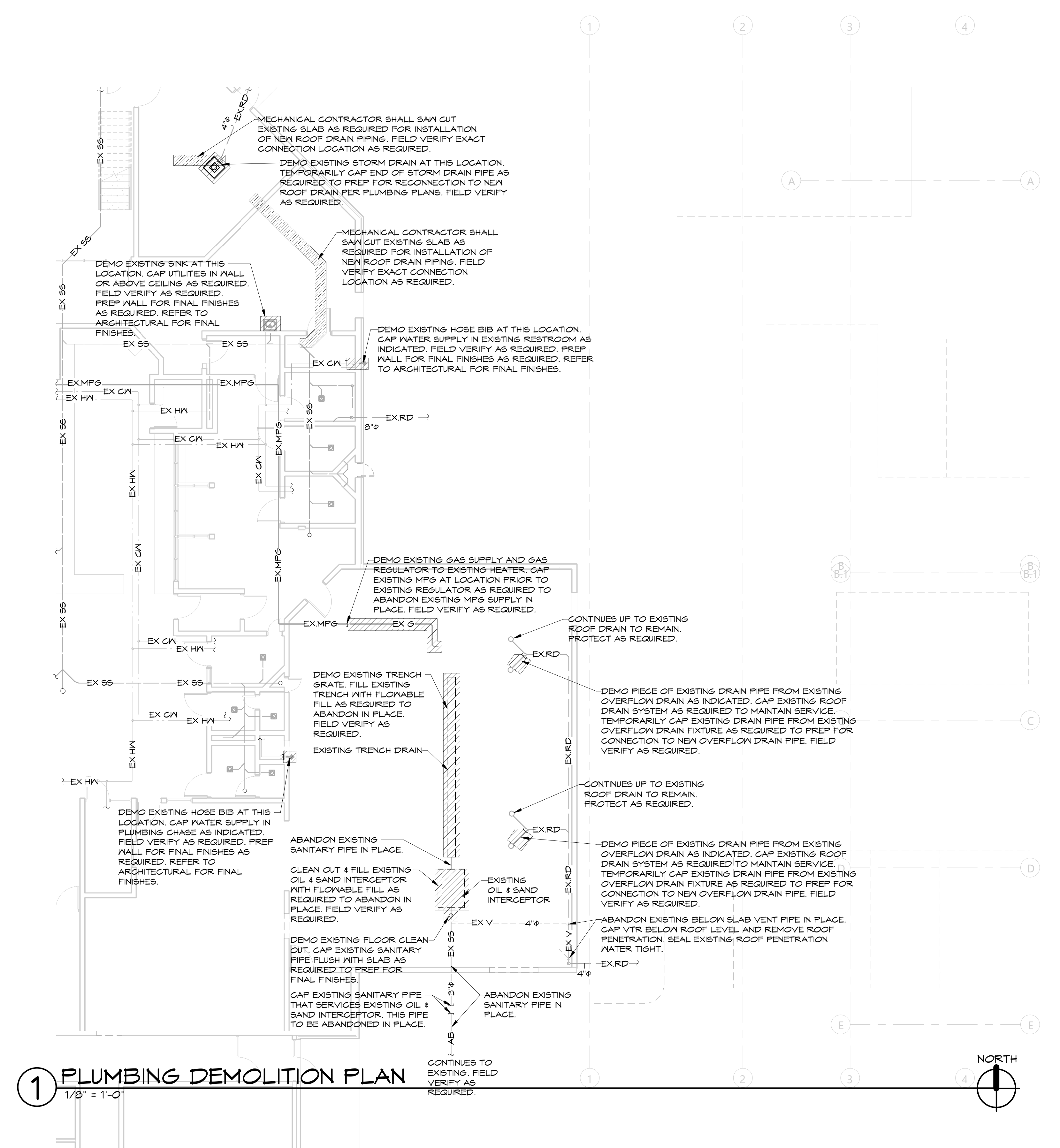
DRAWN BY:
AH
CHECK BY:
NEW
ISSUE DATE:
06/10/2024

PROJECT NO.
2404

REVISION DATES
DATE DESCRIPTION

SHEET
P.2.0

COPYRIGHT 2024
THESE DRAWINGS AND SPECIFICATIONS
ARE THE EXCLUSIVE PROPERTY OF
HIGHT JACKSON ASSOCIATES P.A.
USE OR REPRODUCTION IS PROHIBITED
WITHOUT WRITTEN CONSENT



1 PLUMBING DEMOLITION PLAN
1/8" = 1'-0"



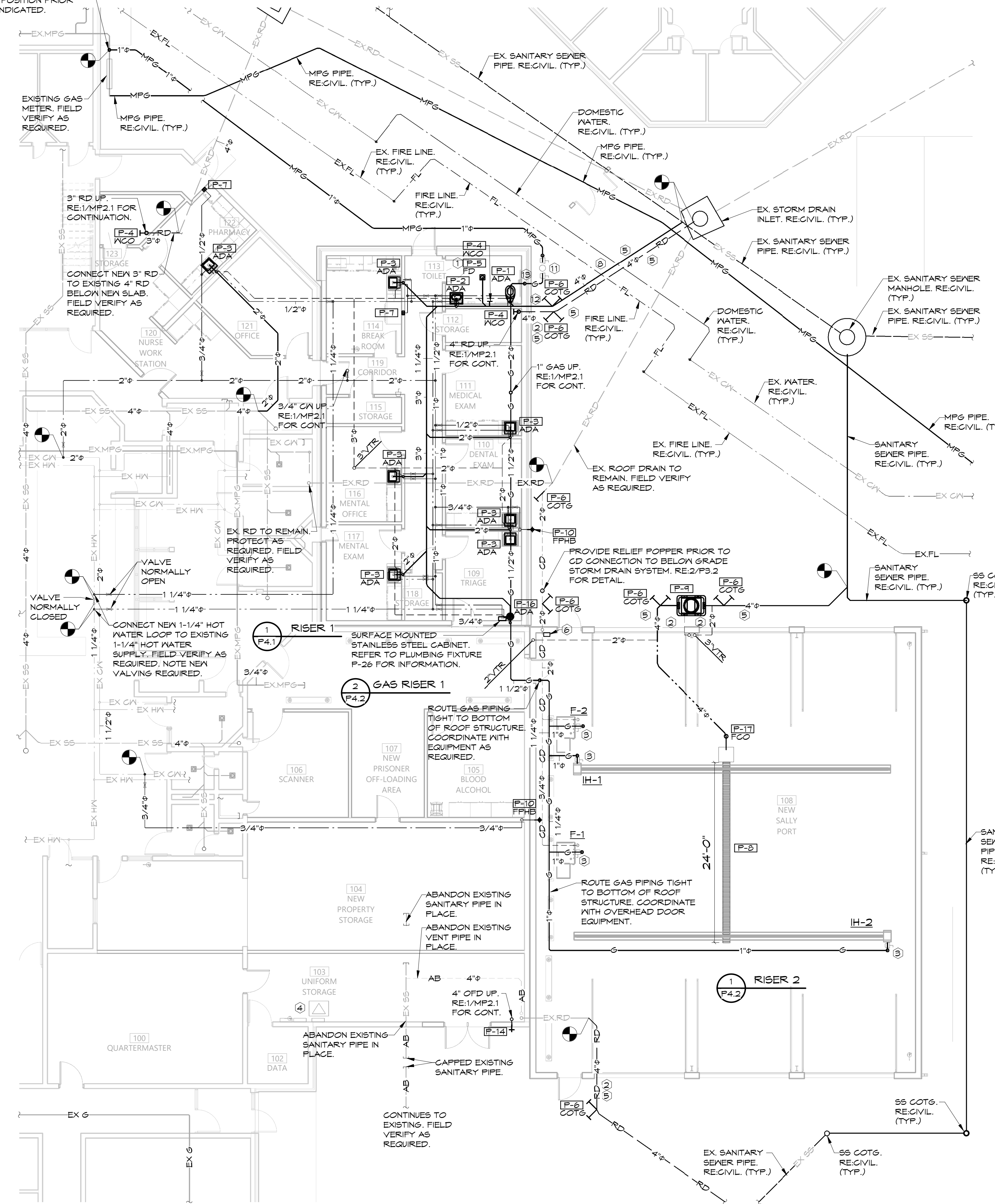
NOTES:
RE:P1.1 FOR PLUMBING LEGEND, GENERAL AND KEYED NOTES. RE:P2.1 FOR PLUMBING PLANS. RE:P3.1-P3.2 FOR PLUMBING DETAILS. RE:P5.1 FOR PLUMBING SCHEDULES.

HSA HSAEngineering
479 / 452 / 8922 office
7405 Ellis St.
Fort Smith, AR 72916
HSAConsultants.com



DRAWN BY:	AH
CHECK BY:	NEW
ISSUE DATE:	06/10/2024
PROJECT NO.:	2404
REVISION DATES:	
DATE	DESCRIPTION

CONNECT NEW 1" MPG TO EXISTING MPG SUPPLY, AT LOCATION ON BUILDING SIDE OF EXISTING METER, AND PRIOR TO ENTRY INTO BUILDING. PROVIDE NEW GAS SHUT OFF IN VERTICAL POSITION PRIOR TO ROUTING BELOW GRADE AS INDICATED.

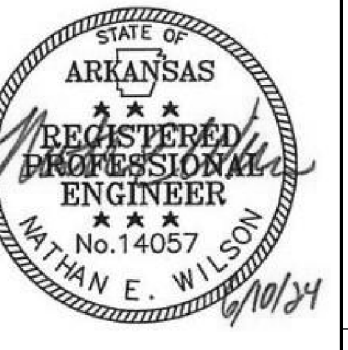


1 PLUMBING PLAN
1/8" = 1'-0"



NOTES:
RE:P1.1 FOR PLUMBING LEGEND, GENERAL AND KEYED NOTES. RE:P3.1-P3.2 FOR PLUMBING DETAILS. RE:P3.1 FOR PLUMBING SCHEDULES.

HSA HSAEngineering
479 / 452 / 8922 office
7405 Ellis St.
Fort Smith, AR 72916
HSAConsultants.com



Hight Jackson
ASSOCIATES
5201 W Village Parkway, Suite 300 | Rogers, Arkansas 72768 | (479) 464-4965 | www.hjarch.com

A REMODEL AND ADDITION FOR
BENTON CO. DETENTION CENTER
BENTONVILLE, AR

DRAWN BY:
AH
CHECK BY:
NEW
ISSUE DATE:
06/10/2024

PROJECT NO.
2404

REVISION DATES
DATE DESCRIPTION

S H E E T
P.2.2
COPYRIGHT 2024
THESE DRAWINGS AND SPECIFICATIONS
ARE THE EXCLUSIVE PROPERTY OF
HIGHT JACKSON ASSOCIATES P.A.
USE OR REPRODUCTION IS PROHIBITED
WITHOUT WRITTEN CONSENT

FIRE PROTECTION NOTE FOR INDICATED AREA:
LICENSED FIRE SPRINKLER CONTRACTOR SHALL ADJUST EXISTING FIRE PROTECTION SYSTEM AND/OR ADJUST EXISTING SPRINKLER HEADS AS REQUIRED TO COORDINATE WITH NEW CEILINGS. SYSTEM MUST MEET NFPA 13. FIELD VERIFY EXISTING SYSTEM AND CONDITIONS AS REQUIRED.

FIRE PROTECTION NOTE FOR INDICATED AREA:
LICENSED FIRE SPRINKLER CONTRACTOR SHALL EXTEND EXISTING FIRE PROTECTION SYSTEM FROM EXISTING BUILDING TO SALLY FORT ADDITION AND MEDICAL WING ADDITION AS REQUIRED TO MEET NFPA 13. NEW FIRE SPRINKLER SUPPLY PIPING AND NEW SPRINKLERS HEAD SHALL BE SUPPLIED AS REQUIRED FIELD VERIFY EXISTING SYSTEM AS REQUIRED.

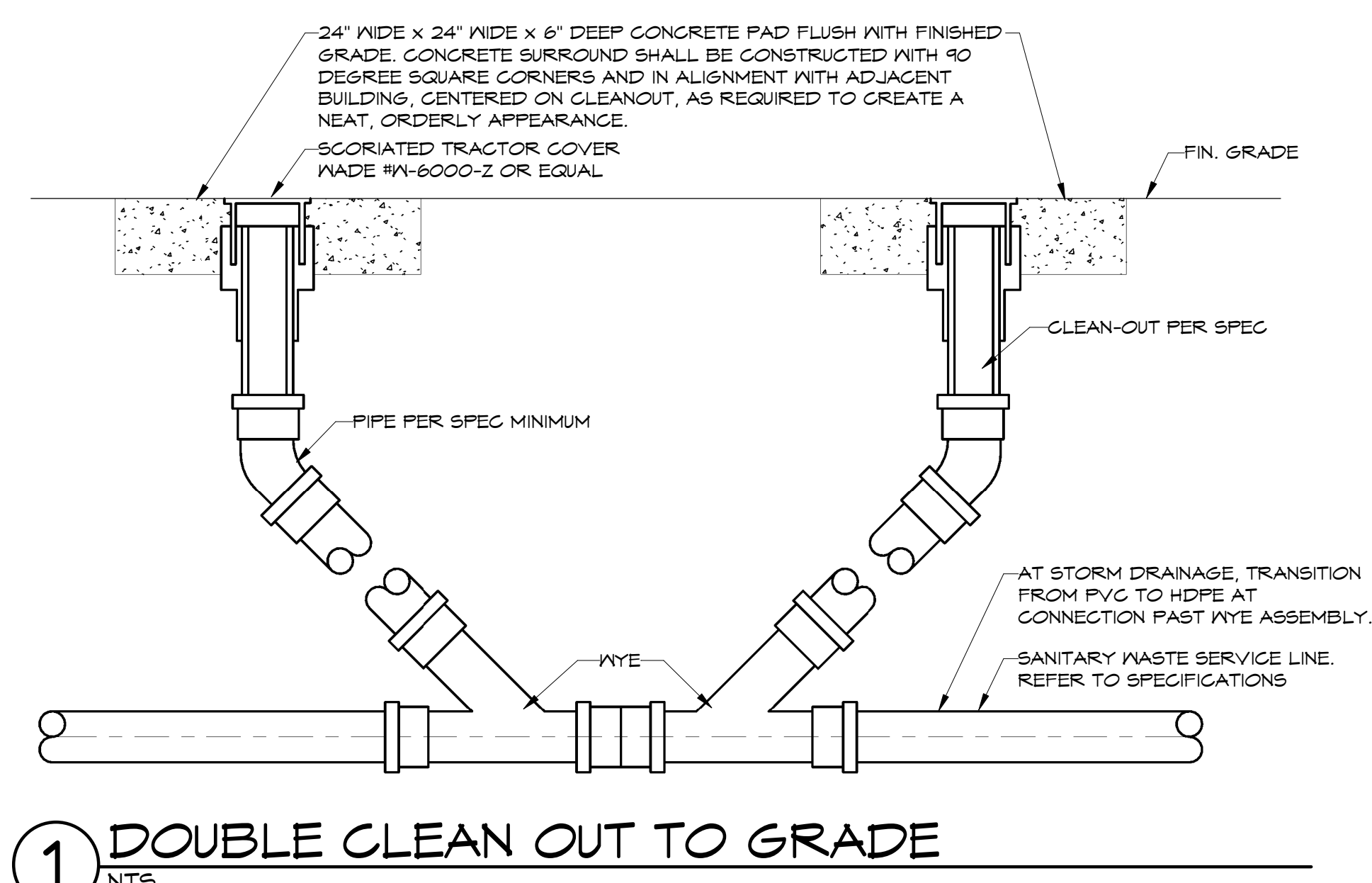
1 FIRE PROTECTION PLAN
1/8" = 1'-0"



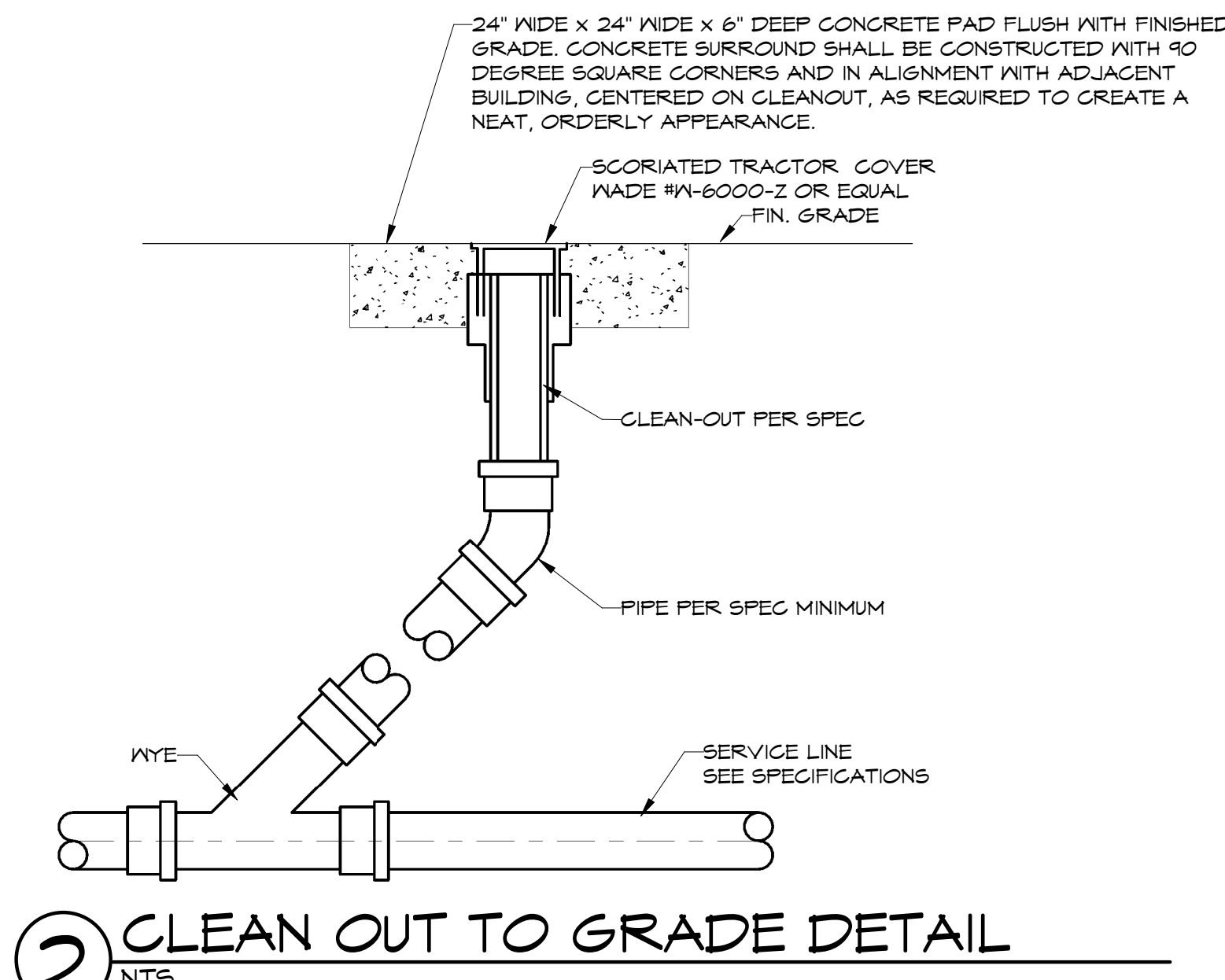
NOTES:
RE:P.1.1 FOR PLUMBING LEGEND, GENERAL AND KEYED NOTES. RE:P.3.1-P.3.2 FOR PLUMBING DETAILS. RE:P.5.1 FOR PLUMBING SCHEDULES.

HSA HSAEngineering
479 / 452 / 8922 office
7405 Ellis St.
Fort Smith, AR 72916
HSAConsultants.com

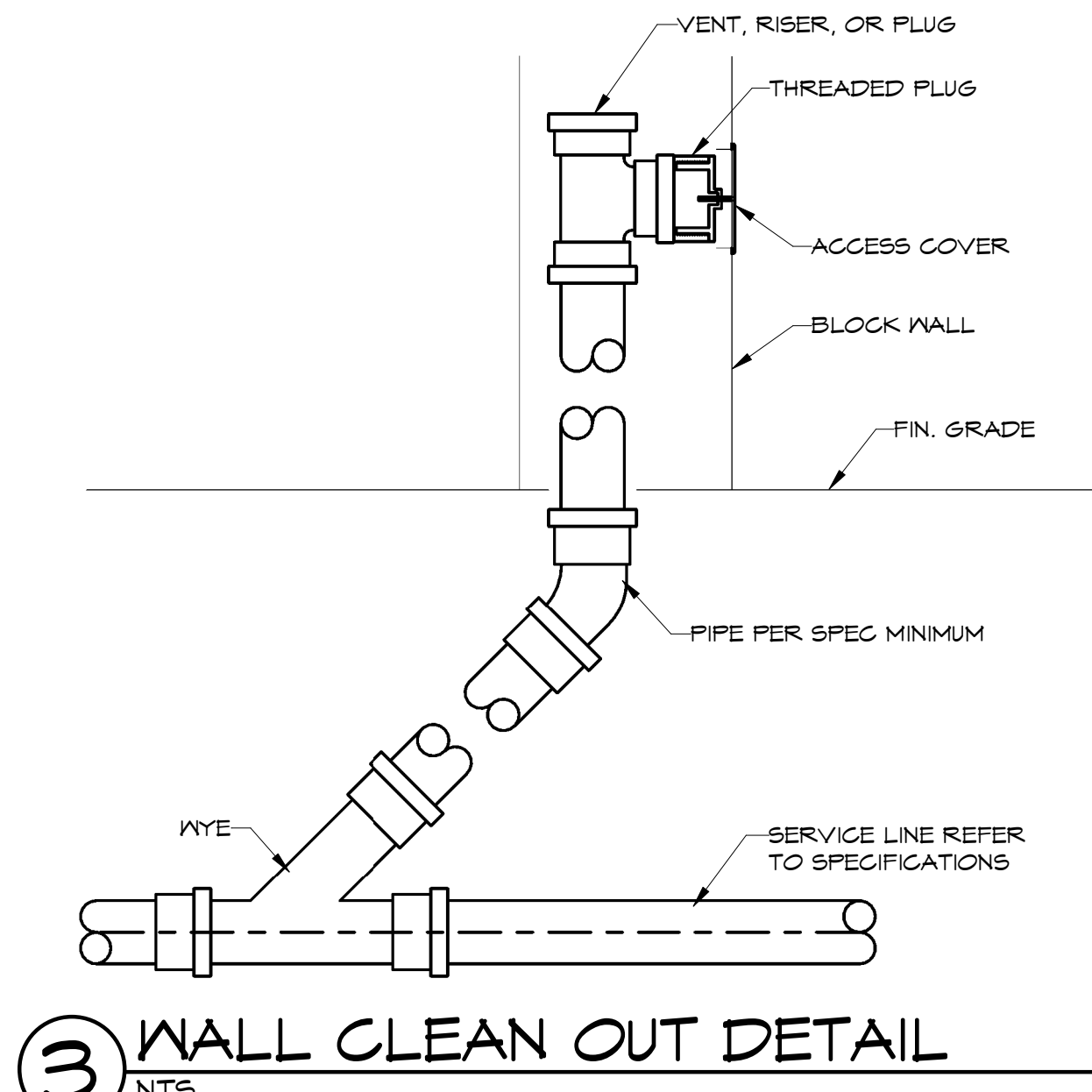
HSA JOB # 24-033



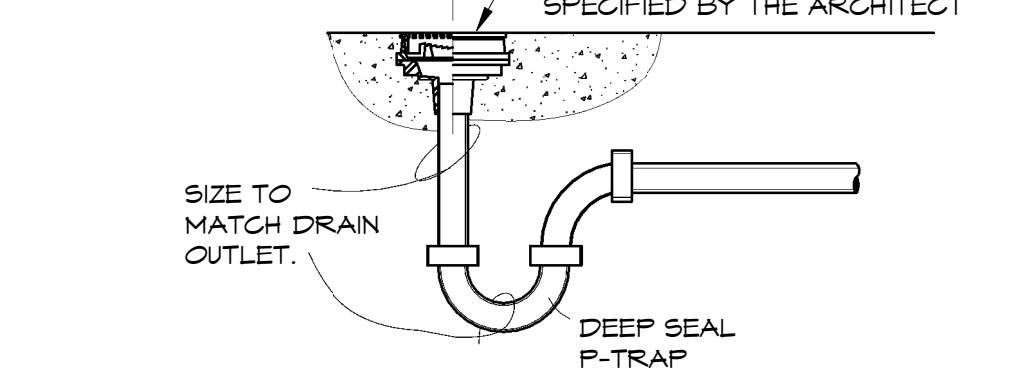
1 DOUBLE CLEAN OUT TO GRADE
NTS



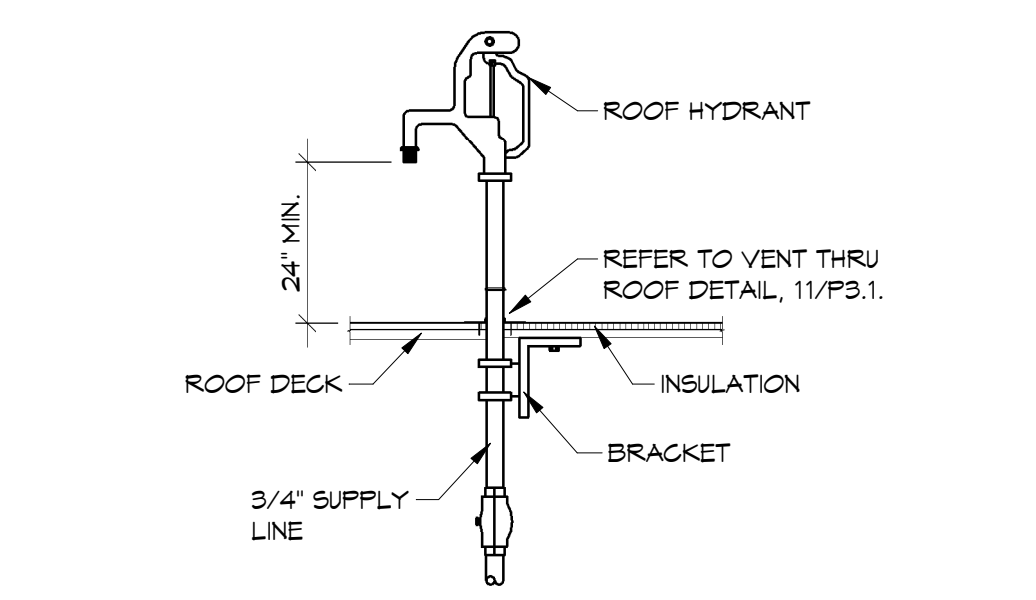
2 CLEAN OUT TO GRADE DETAIL
NTS



3 WALL CLEAN OUT DETAIL
NTS

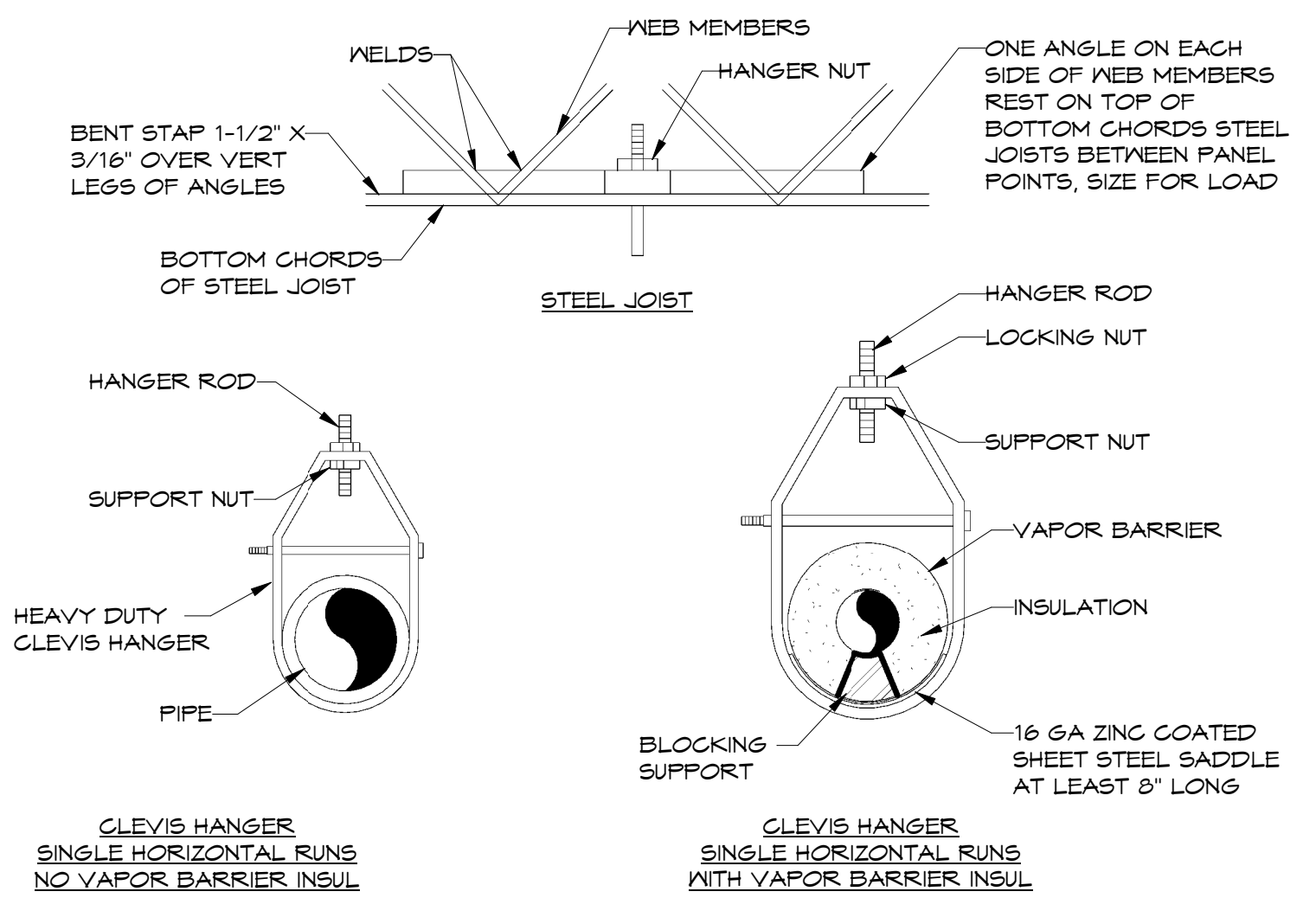


4 FLOOR DRAIN DETAIL
NTS

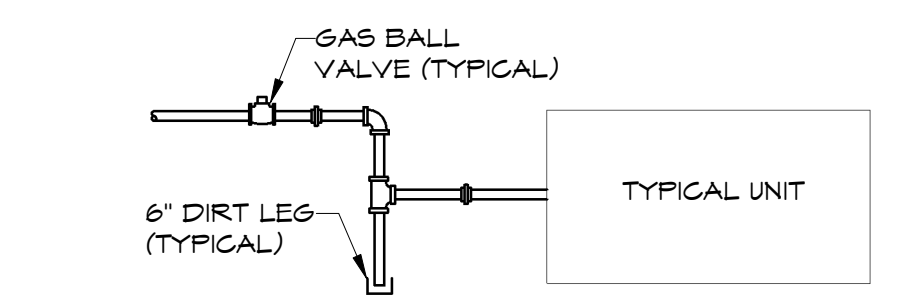


5 ROOF HYDRANT DETAIL
NTS

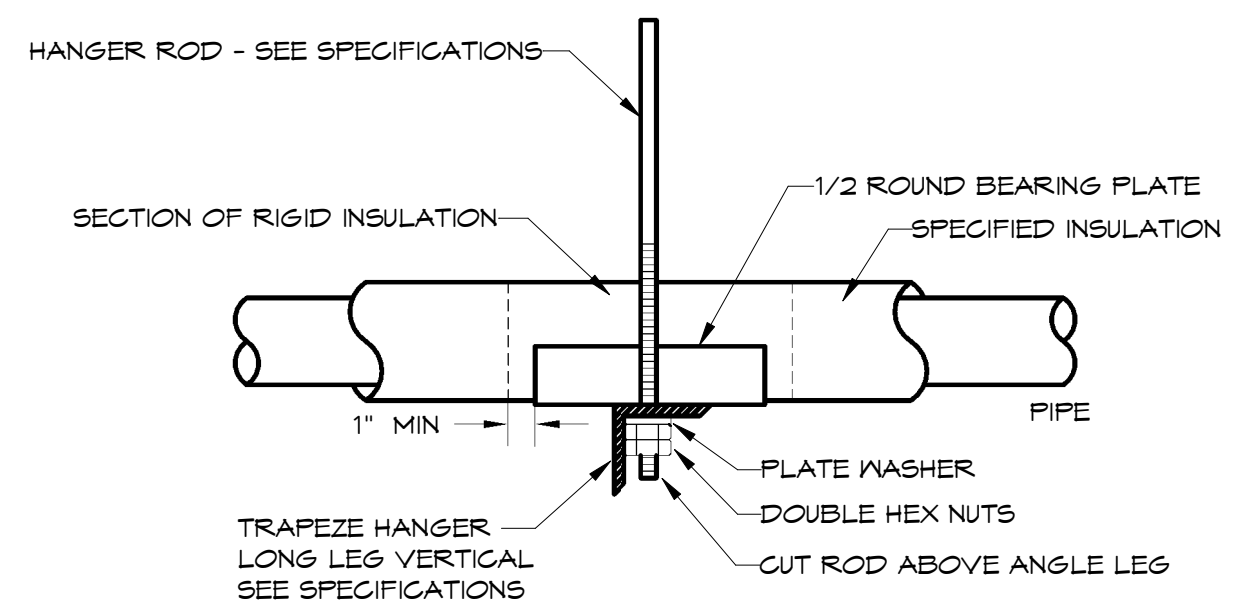
HANGER ROD SCHEDULE			
PIPE SIZE	ROD SIZE	PIPE SIZE	ROD SIZE
UP TO 2"	1/4" DIA	8" THRU 12"	1/2" DIA
2 1/2" UP TO 6"	3/8" DIA		



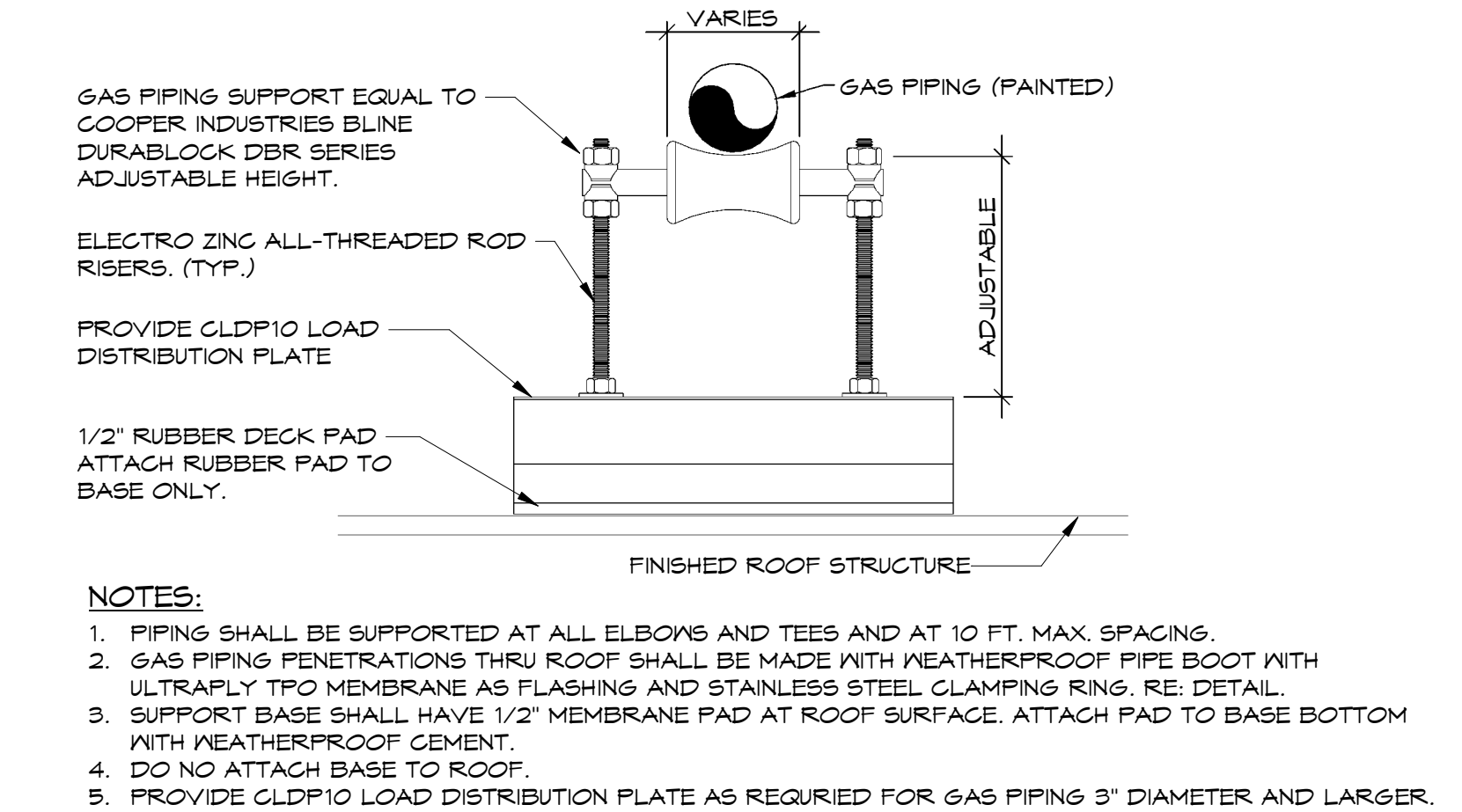
6 TYPICAL PIPE HANGER DETAIL-CLEVIS HANGER
NTS



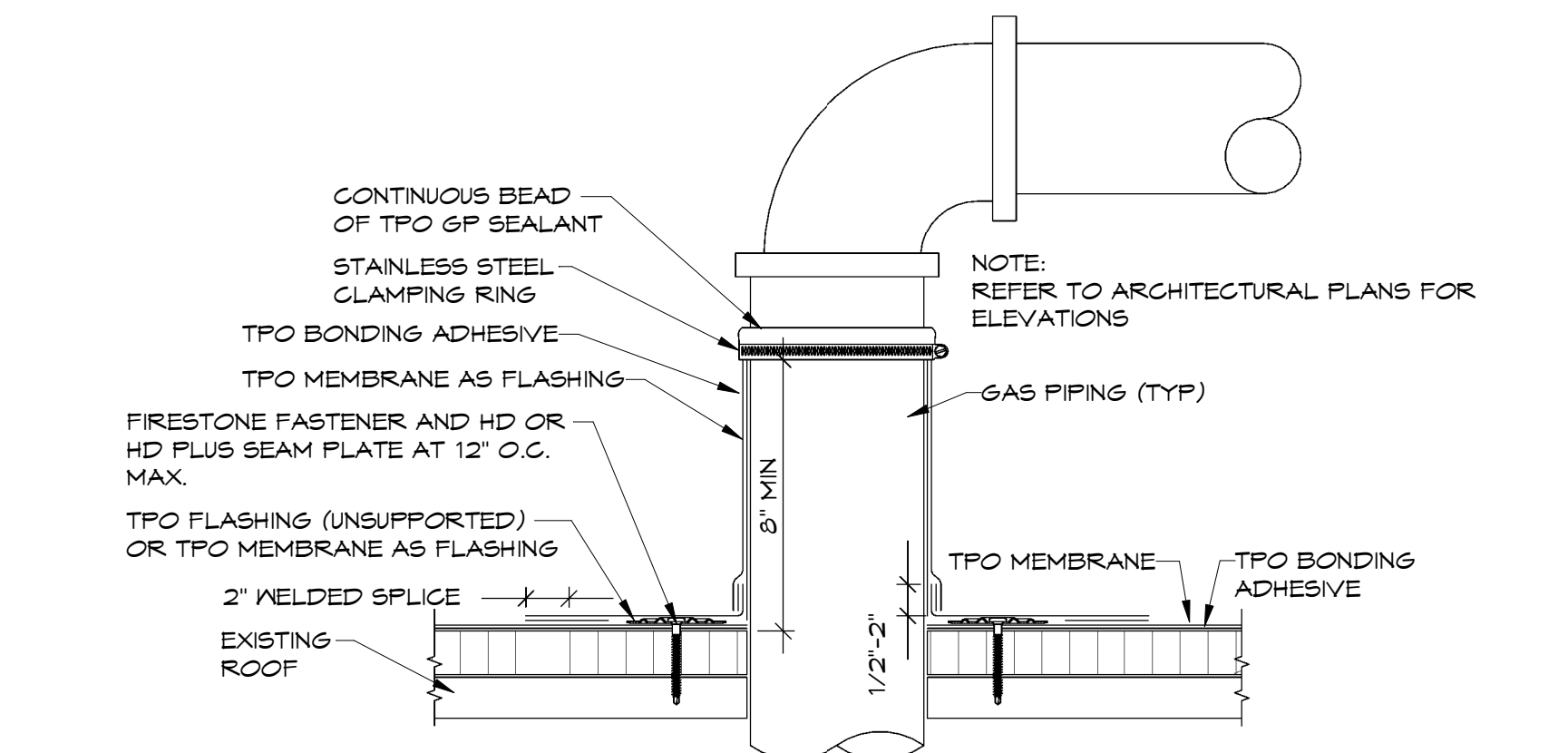
7 TYPICAL GAS CONNECTION
NTS



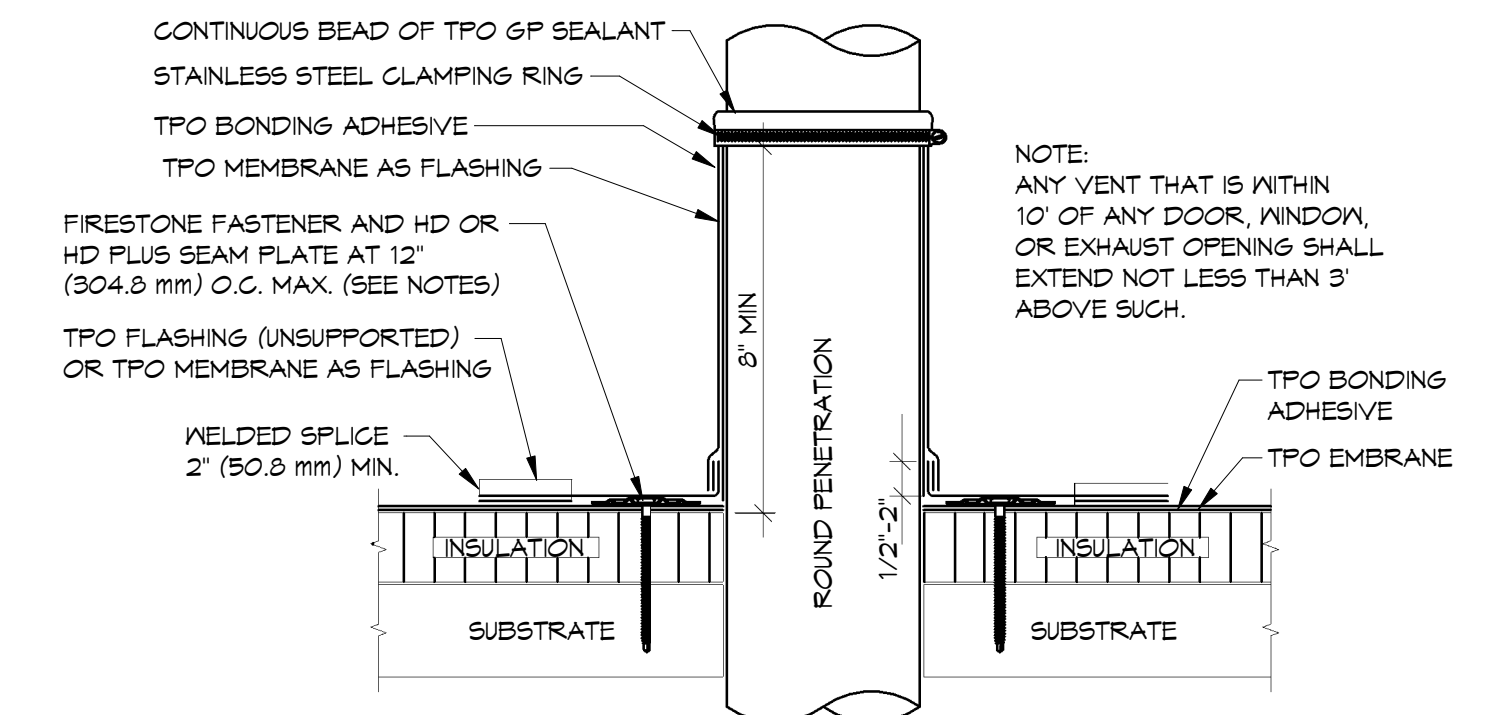
8 TYPICAL PIPE HANGER DETAIL-TRAPEZE
NTS



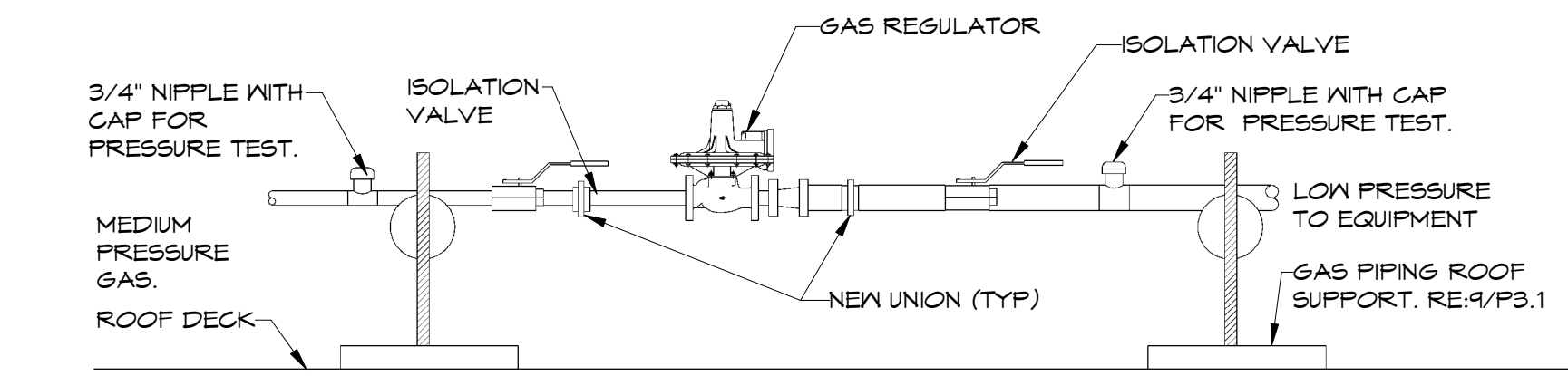
9 GAS PIPING ROOF SUPPORT
NTS



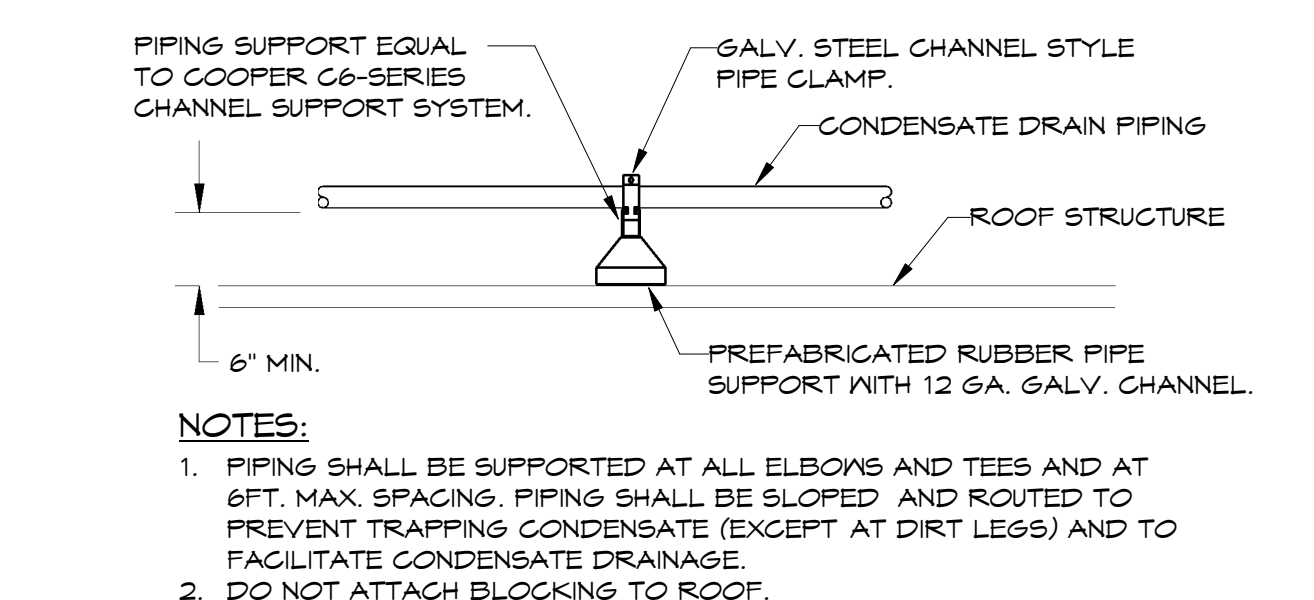
10 GAS PIPING ROOF PENETRATION DETAIL
NTS



11 VENT THROUGH ROOF DETAIL
NTS



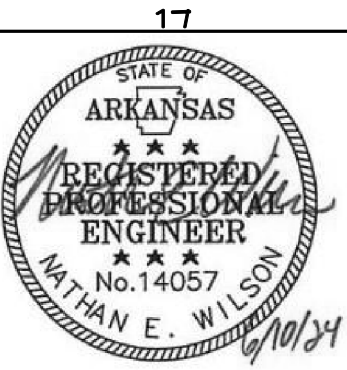
12 GAS REGULATOR ON ROOF DETAIL
NTS



13 CONDENSATE PIPING SUPPORT DETAIL
NTS

NOTES:
RE:P.1.1 FOR PLUMBING LEGEND, GENERAL AND KEYED NOTES, RE:P.2.1 FOR PLUMBING PLANS, RE:P.5.1 FOR PLUMBING SCHEDULES.

HSAEngineering
479 / 452 / 8922 office
7405 Ellis St.
Fort Smith, AR 72916
HSAConsultants.com



Hight Jackson ASSOCIATES
5201 W Village Parkway, Suite 3001 Rogers, Arkansas 72768 | (479) 464-4965 | www.hjarch.com

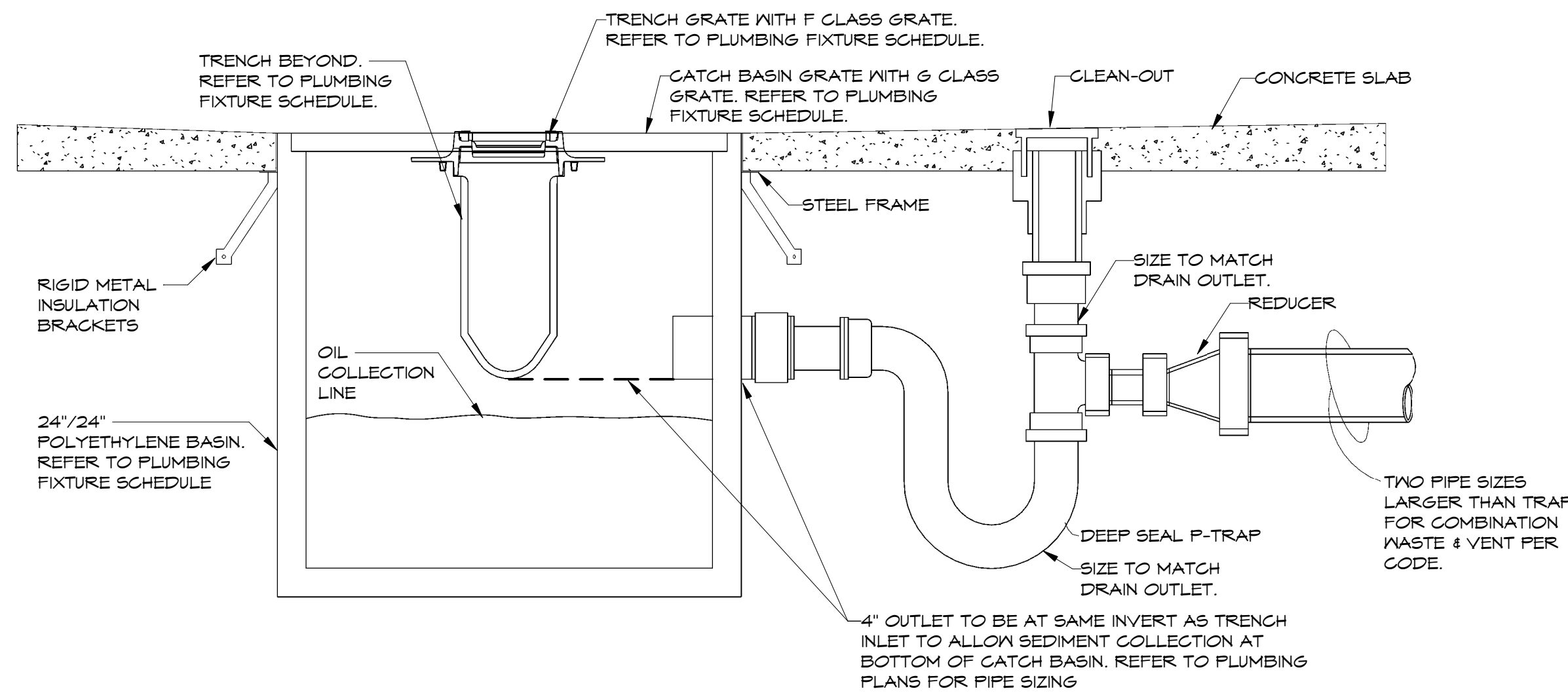
A REMODEL AND ADDITION FOR
BENTON CO. DETENTION CENTER
BENTONVILLE, AR

DRAWN BY: AH
CHECK BY: NEW
ISSUE DATE: 06/10/2024

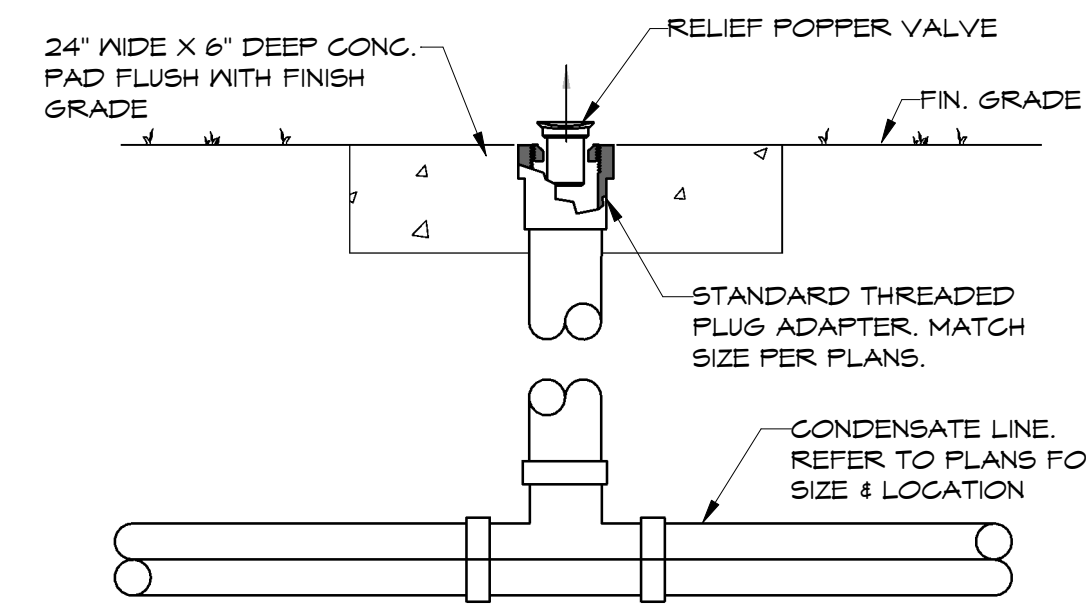
PROJECT NO: 2404

REVISION DATES

SHEET
P3.1
COPYRIGHT 2024
THESE DRAWINGS AND SPECIFICATIONS ARE THE EXCLUSIVE PROPERTY OF HIGHT JACKSON ASSOCIATES P.A. USE OR REPRODUCTION IS PROHIBITED WITHOUT WRITTEN CONSENT.

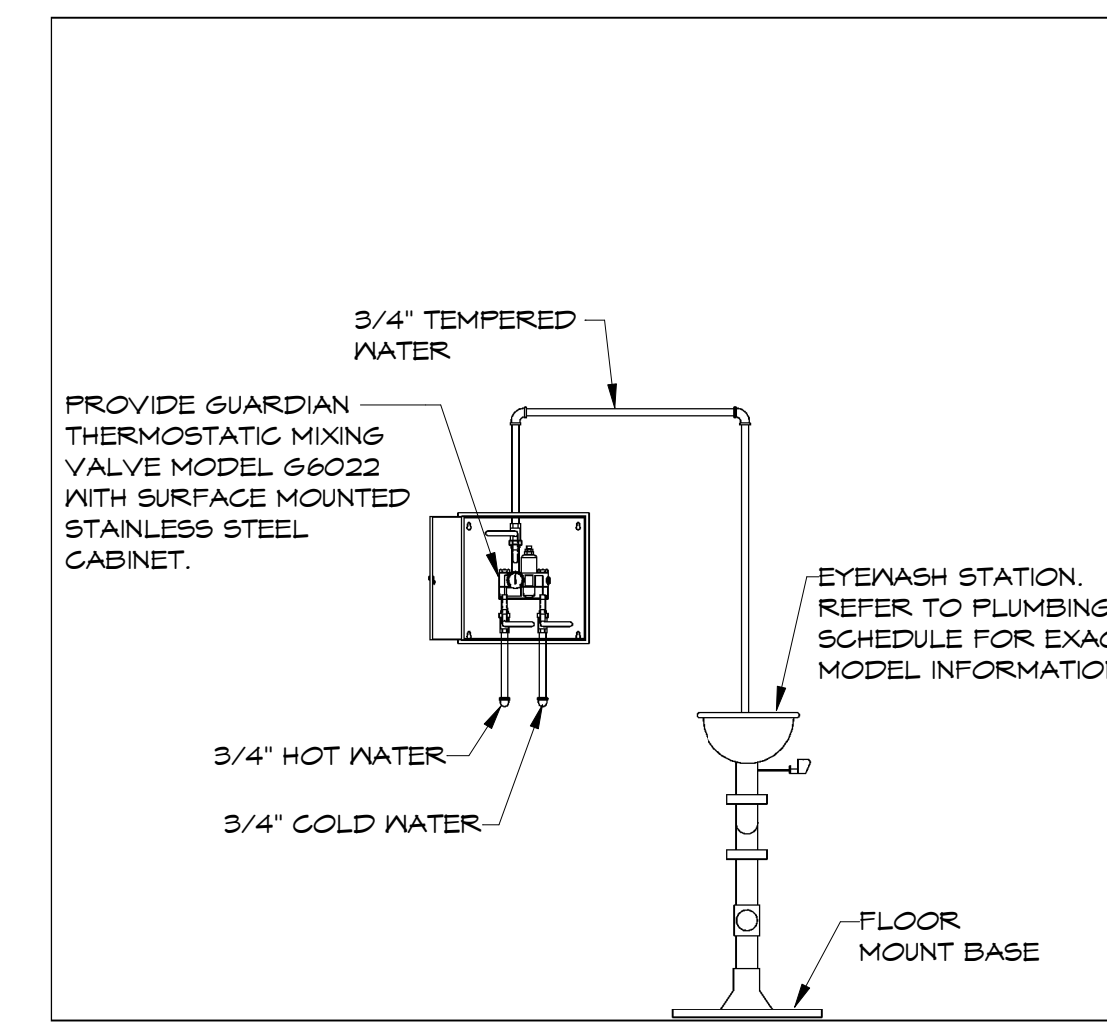


1 CATCH BASIN DETAIL
NTS

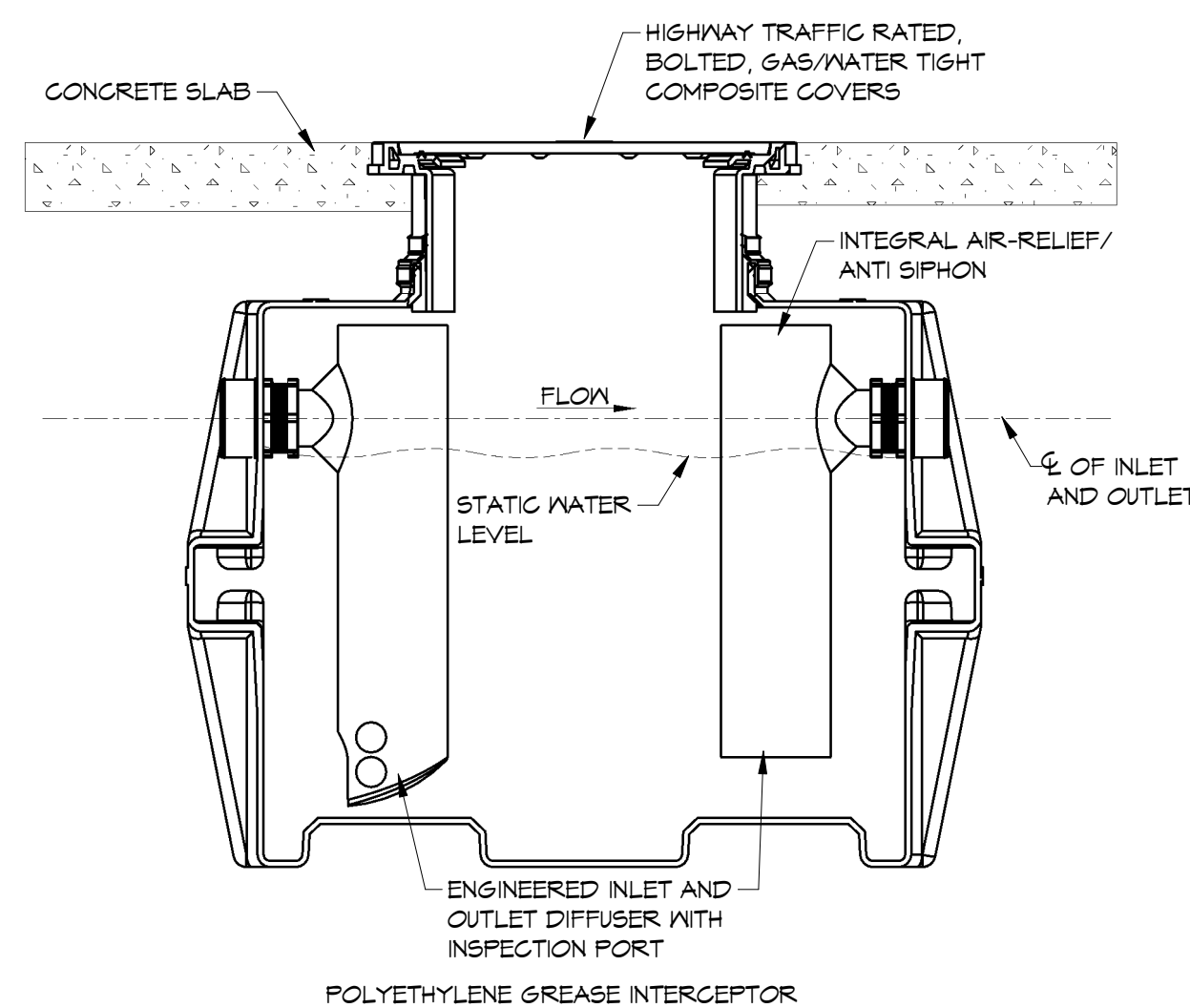
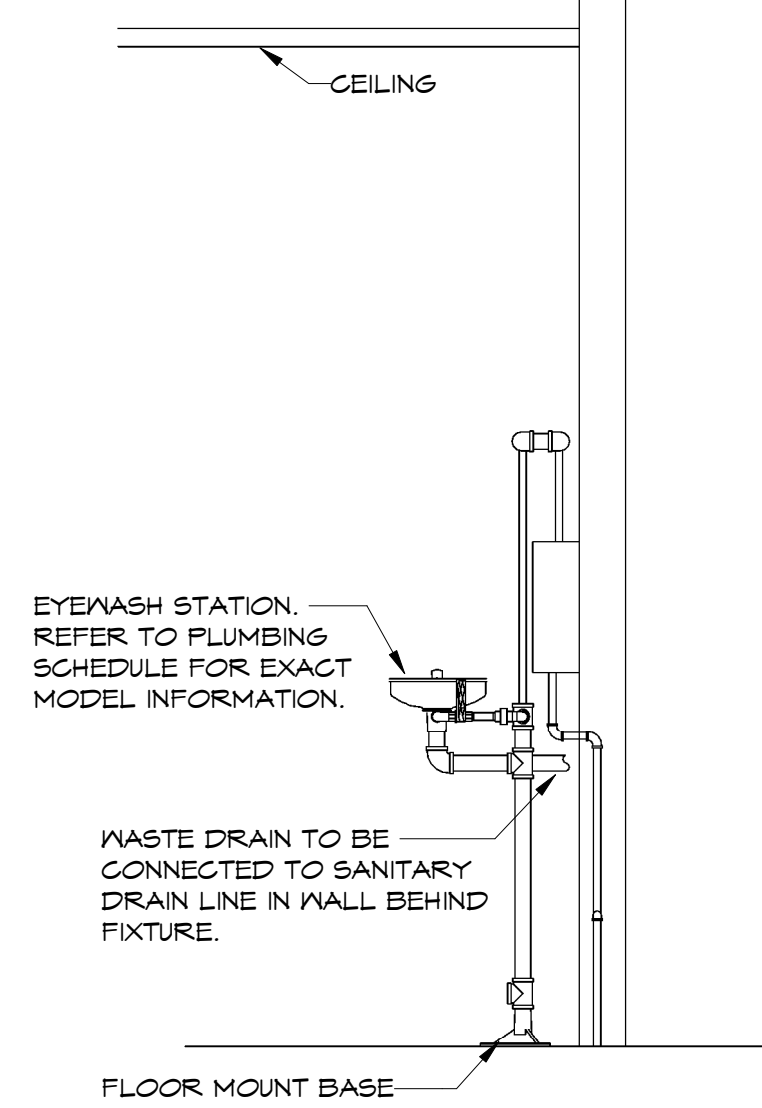


NOTES:
1. ENSURE FINISH GRADE AT RELIEF VALVE IS MIN. 12 IN. BELOW FINISHED FLOOR ELEVATION.

2 RELIEF POPPER DETAIL
NTS



3 EMERGENCY SHOWER DETAIL
NTS



NOTES:
1. FILL TANK WITH WATER BEFORE BACKFILLING TO PREVENT FLOAT OUT DURING PIPING INSTALLATION.
2. BACKFILL USING CRUSHED AGGREGATE MATERIAL APPROXIMATELY 3/4" SIZE ROCK, OR SAND, WITH NO FINES.
3. PLACE 6" AGGREGATE BASE UNDER SLAB. AGGREGATE SHOULD BE 3/4" SIZE ROCK, OR SAND, WITH NO FINES.
4. THICKNESS OF CONCRETE AROUND COVER TO BE DETERMINED BY SPECIFYING ENGINEER. IF TRAFFIC LOADING IS REQUIRED, THE CONCRETE SLAB DIMENSIONS SHOWN ARE FOR GUIDELINE PURPOSE ONLY.
5. ALL PIPE PENETRATIONS TO BE SLEEVED OR HAVE SLIP CONNECTIONS.
6. PROVIDE REQUIRED FACTORY MANHOLE EXTENSIONS TO GRADE. FIELD VERIFY EXTENSION DIMENSIONS PRIOR TO ORDERING.

4 OIL INTERCEPTOR DETAIL
NTS



Hight Jackson
ASSOCIATES
5201 W Village Parkway, Suite 300 | Rogers, Arkansas 72768 | (479) 464-4965 | www.hjarch.com

A REMODEL AND ADDITION FOR
BENTON CO. DETENTION CENTER
BENTONVILLE, AR

DRAWN BY:
AH
CHECK BY:
NEW
ISSUE DATE
06/10/2024

PROJECT NO.
2404

REVISION DATES
DATE DESCRIPTION

NOTES:
RE:P1.1 FOR PLUMBING LEGEND, GENERAL AND KEYED NOTES. RE:P3.1-P3.2 FOR PLUMBING DETAILS. RE:P3.1 FOR PLUMBING SCHEDULES.

HSA HSAEngineering
479 / 452 / 8922 office
7405 Ellis St.
Fort Smith, AR 72916
HSAConsultants.com

SHEET
P3.2

COPYRIGHT 2024
THESE DRAWINGS AND SPECIFICATIONS ARE THE EXCLUSIVE PROPERTY OF HIGHT JACKSON ASSOCIATES P.A. USE OR REPRODUCTION IS PROHIBITED WITHOUT WRITTEN CONSENT.



Hight Jackson
 ASSOCIATES
 5201 W Village Parkway, Suite 300 | Rogers, Arkansas 72758 | (479) 464-4965 | www.hjarch.com

A REMODEL AND ADDITION FOR
BENTON CO. DETENTION CENTER
 BENTONVILLE, AR

DRAWN BY:
AH
 CHECK BY:
NEW
 ISSUE DATE:
06/10/2024

PROJECT NO:
2404

#	REVISION DATES	DESCRIPTION
DATE		

S H E E T

P5.1

COPYRIGHT 2024
 THESE DRAWINGS AND SPECIFICATIONS
 ARE THE EXCLUSIVE PROPERTY OF
 HIGHT JACKSON ASSOCIATES P.A.
 USE OR REPRODUCTION IS PROHIBITED
 WITHOUT WRITTEN CONSENT

PLUMBING FIXTURE SCHEDULE

MARK	FIXTURE	MANUFACTURER	MODEL	MOUNT	CONNECTION			REMARKS / ACCESSORIES
					CN	HN	SS	
P-1	ACCESSIBLE WATER CLOSET	AMERICAN STANDARD	3043.102	FLOOR	1-1/2	-	4	WHITE VITREOUS CHINA, LOW CONSUMPTION, ELONGATED BOWL, FLUSH VALVE TOILET. PROVIDE SLOAN MODEL SLOAN #111-DFB FLUSH VALVE, OLSONITE #10 SCC OPEN SEAT AND SLOAN YJ TYPE PIPE SUPPORT. PROVIDE BLOCKING IN WALL AS REQUIRED FOR INSTALLATION OF YJ PIPE SUPPORT. INSTALL 1" FROM TOP OF SEAT TO FLOOR.
P-2	ACCESSIBLE LAVATORY	AMERICAN STANDARD	0355.012	WALL	1/2	1/2	1-1/2	WHITE VITREOUS CHINA LAVATORY WITH FAUCET LEDGE AND BACKSPASH. PROVIDE AMERICAN STANDARD RELIANT T305.050 SINGLE LEVER, 0.5 GPM, FAUCET WITH EXTRA LONG HANDLE, BASE PLATE, GRID DRAIN, MADE #520 WALL CARRIER, HANDLAV MOLDED DRAIN & SUPPLY INSULATION KIT. MOUNT 34 IN. A.F.F. TO TOP OF RIM. PROVIDE MATTS LFMMV UNDER COUNTER. THERMOSTATIC MIXING VALVE. SET WATER TEMPERATURE AT 105 DEGREES F.
P-3	ACCESSIBLE SINGLE STAINLESS STEEL SINK	JUST MFG.	SL-ADA-2019-A-GR	COUNTER	1/2	1/2	2	ACCESSIBLE SINGLE COMPARTMENT, STAINLESS STEEL SINK (14" x 16" x 5.5" D) PROVIDED BY MECHANICAL CONTRACTOR. PROVIDE CHICAGO 106-ESCP GOOSENECK FAUCET WITH WRIST BLADES AND STAINLESS STEEL GRID DRAIN, CENTER, REAR DRAIN LOCATION, MECHANICAL CONTRACTOR TO PROVIDE ALL MATERIALS REQUIRED TO MAKE ALL FINAL CONNECTIONS, INCLUDING TAIL PIECE AND ANGLE STOP VALVES. PROVIDE HANDLAV MOLDED DRAIN AND SUPPLY INSULATION KIT. SINK MUST BE ADA COMPLIANT. MOUNT 34 IN. A.F.F. TO TOP OF RIM. PROVIDE MATTS LFMMV THERMOSTATIC MIXING VALVE. SET WATER TEMPERATURE AT 105 DEGREES F.
P-4	WALL CLEAN OUT	WADE	8550-R	WALL	-	-	*	*SIZE TO MATCH WASTE LINE, MAXIMUM TO 4 INCHES. PROVIDE WADE 8904 STAINLESS STEEL WALL ACCESS COVER.
P-5	FLOOR DRAIN	WADE	1100	FLOOR	-	-	*	*CAST IRON FLOOR DRAIN, SIZE AS INDICATED ON PLANS OR MATCH INDICATED WASTE LINE. PROVIDE DEEP SEAL TRAP. COORDINATE DRAIN TOP MATERIAL WITH SPECIFIED FLOOR FINISH.
P-6	CLEAN OUT TO GRADE	WADE	6000Z	GRADE	-	-	*	*SIZE TO MATCH WASTE LINE MAXIMUM TO 4 INCHES. PROVIDE HEAVY DUTY TRACTOR TYPE COVER.
P-7	ICE MAKER WALL BOX	GUY GRAY	BIM8T5	WALL	1/2	-	-	WALL MOUNTED ICE MAKER HOOK UP WITH ANGLE VALVE.
P-8	TRENCH DRAIN WITH CATCH BASIN	ZURN	Z88T-24-PGF-HD	GRADE	-	-	4	HIGH DENSITY POLYETHYLENE CATCH BASIN (24" x 24") WITH HEAVY DUTY FRAME, CLASS G GRATE AND EXTENSIONS TO GRADE AS REQUIRED. PROVIDE WITH ZURN MODEL Z88S PRE-SLOPED 6" WIDE TRENCH DRAIN WITH CLASS F GRATES. PROVIDE QUANTITY OF TRENCH DRAIN SECTIONS AS REQUIRED TO MATCH THE TRENCH LENGTH INDICATED ON DRAWINGS.
P-9	OIL/WATER SEPARATOR	STRIEM	05-75	GRADE	-	-	4	50 GPM FLOW RATE OIL/WATER SEPARATOR WITH 11 GALLONS SOLIDS CAPACITY, 27.5 GALLONS OIL CAPACITY, 110 GALLONS LIQUID CAPACITY. PROVIDE POLYETHYLENE OIL/WATER SEPARATOR WITH HEAVY DUTY CAST IRON GASKETED COVERS. PROVIDE EXTENSIONS TO GRADE AS REQUIRED FOR SERVICE. PROVIDE WITH PICKABLE CAST IRON COVER (16,000 LBS RATED). PROVIDE WITH MANUFACTURER'S SLICK STICK OIL LEVEL MONITORING SYSTEM WITH HI OIL LEVEL ALARM. PROVIDE WITH MANUFACTURER'S CONTROL BOX AND MOUNTING HARDWARE. RE:4/P3.2 FOR DETAIL.
P-10	FREEZE PROOF HOSE BIB	WOODFORD	B6T	WALL	3/4	-	-	FREEZE PROOF HOSE BIB IN LOCKING BOX. PROVIDE VACUUM BREAKER AND BACKFLOW PREVENTION.
P-11	WATER HAMMER ARRESTOR	WADE BELLOWS	SHOKSTOP	ACCESSIBLE LOCATION	*	*	-	*SIZE WATER HAMMER ARRESTOR PER MANUFACTURER'S RECOMMENDATIONS. ALL STAINLESS STEEL CONSTRUCTION WITH WELDED NESTED BELLOWS. PROVIDE BALL VALVE FOR SHUT-OFF.
P-12	ROOF DRAIN	WADE	3000-AE-53	ROOF	-	-	*	*SIZE AS INDICATED ON PLANS. CAST IRON ROOF DRAIN WITH FLASHING RING, FLANGE, GRAVEL STOP, CAST IRON DOME, UNDER DECK CLAMP, ADJUSTABLE EXTENSION AND VANDAL PROOF SCREWS.
P-13	OVERFLOW DRAIN	WADE	3000-AE-53	ROOF	-	-	*	*SIZE AS INDICATED ON PLANS. CAST IRON ROOF DRAIN WITH FLASHING RING, FLANGE, GRAVEL STOP, CAST IRON DOME, UNDER DECK CLAMP, ADJUSTABLE EXTENSION AND VANDAL PROOF SCREWS.
P-14	OVERFLOW NOZZLE	WADE	WADE 9940-166	WALL	-	-	*	*SIZE TO MATCH OVERFLOW DRAIN PIPING. CAST BRONZE DOWNSPOUT NOZZLE WITH INLET AND FLANGE TO SECURE NOZZLE TO WALL. FASTENING HARDWARE TO MATCH NOZZLE. MOUNT 12" A.F.F. PROVIDE WITH BIRD SCREEN WITH MATCHING FINISH.
P-15	ROOF HYDRANT	WOODFORD	SRH-M5	ROOF	3/4	-	*	AUTOMATIC DRAINING, BACKFLOW PROTECTED, FREEZE PROOF ROOF HYDRANT.
P-16	EMERGENCY EYEWASH STATION	GUARDIAN	G1825BC	FLOOR	3/4	3/4	2	FREE STANDING, PEDESTAL MOUNTED EYEWASH WITH STAINLESS STEEL BOWL AND COVER, AND TWO GS-PLUS SPRAY TYPE OUTLET HEADS. PROVIDE WITH GUARDIAN THERMOSTATIC MIXING VALVE MODEL G6022 WITH SURFACE MOUNTED STAINLESS STEEL CABINET. VALVE MUST HAVE A 13 GPM FLOW CAPACITY. SET WATER TEMPERATURE TO 10 DEGREES F. PROVIDE WITH MANUFACTURER'S BRACKETS AND MOUNTING HARDWARE. DRAIN TO BE CONNECTED TO SANITARY DRAIN LINE IN WALL BEHIND FIXTURE. RE:3/P3.2 FOR DETAIL.
P-17	FLOOR CLEANOUT	WADE	6000	FLOOR	-	-	*	*SIZE TO MATCH WASTE LINE, MAXIMUM TO 4 INCHES. PROVIDE OPTIONAL TOP TO MATCH FLOOR FINISH. REFER TO ARCHITECTURAL PLANS FOR FLOOR FINISH SCHEDULE.

- NOTES**
- COORDINATE COUNTER TOP FIXTURE INSTALLATION WITH MILLWORK.
 - INSTALL ACCESSIBLE FLUSH VALVE TO THE ACCESSIBLE SIDE.
 - MECHANICAL CONTRACTOR SHALL PROVIDE APPROVED TRAP GUARDS ON ALL FLOOR SINKS AND FLOOR DRAINS.

NOTES:
 RE:P1.1 FOR PLUMBING LEGEND, GENERAL AND KEYED NOTES.
 RE:P2.1 FOR PLUMBING PLANS. RE:P3.1-P3.2 FOR PLUMBING DETAILS.

HSAEngineering
 479 / 452 / 8922 office
 7405 Ellis St.
 Fort Smith, AR 72916
 HSAConsultants.com



Hight Jackson
ASSOCIATES
5201 W Village Parkway, Suite 300 | Rogers, Arkansas 72758 | (479) 464-4965 | www.hjarch.com

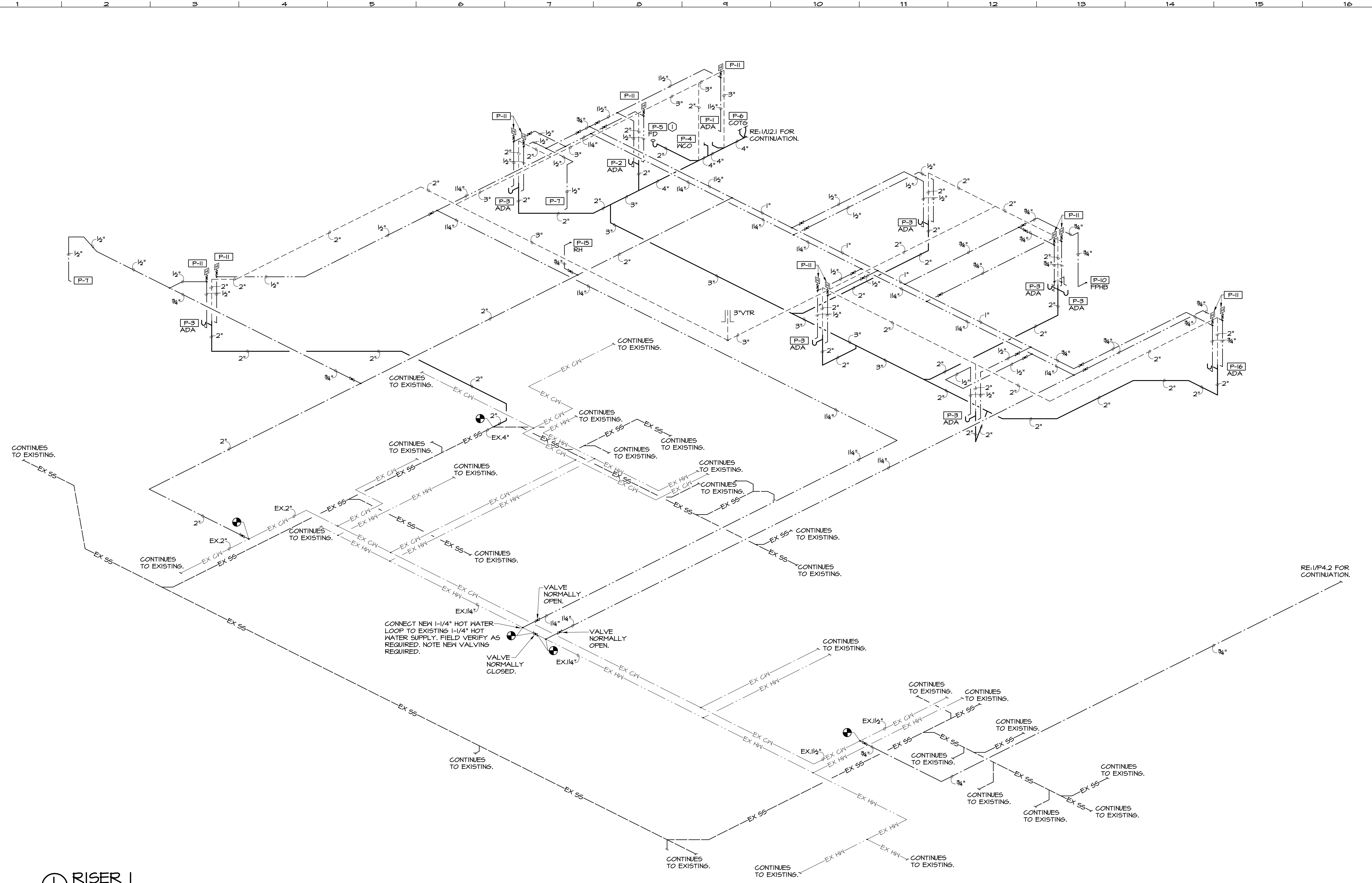
A REMODEL AND ADDITION FOR
BENTON CO. DETENTION CENTER
BENTONVILLE, AR

DRAWN BY:
AH
CHECK BY:
NEW
ISSUE DATE:
06/10/2024

PROJECT NO.
2404

REVISION DATES	DATE	DESCRIPTION

SHEET
P4.1
COPYRIGHT 2024
THESE DRAWINGS AND SPECIFICATIONS
ARE THE EXCLUSIVE PROPERTY OF
HIGHT JACKSON ASSOCIATES, P.A.
USE OR REPRODUCTION IS PROHIBITED
WITHOUT WRITTEN CONSENT



① RISER 1
N.T.S.

NOTES:
RE:U2.1 FOR SITE UTILITY PLAN.
RE:P1.1 FOR PLUMBING LEGEND AND NOTES.
RE:P5.1 FOR PLUMBING SCHEDULES.

HSA HSAEngineering
479 / 452 / 8922 office
7405 Ellis St.
Fort Smith, AR 72916
HSAConsultants.com

HSA JOB # 24-033



Hight Jackson
ASSOCIATES
5201 W Village Parkway, Suite 300 | Rogers, Arkansas 72781 | (479) 464-4965 | www.hjarch.com

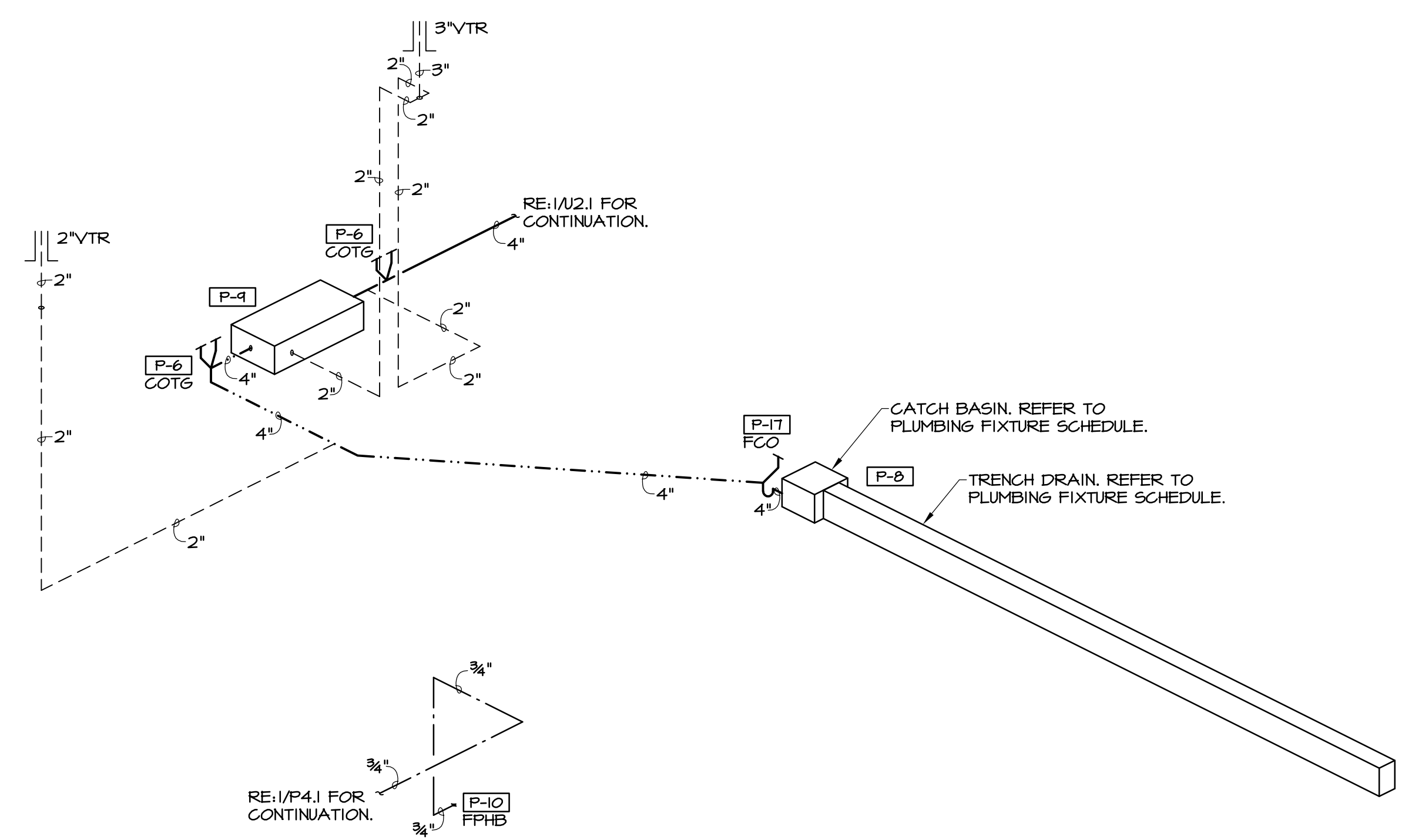
A REMODEL AND ADDITION FOR
BENTON CO. DETENTION CENTER
BENTONVILLE, AR

DRAWN BY:
AH
CHECK BY:
NEW
ISSUE DATE:
06/10/2024

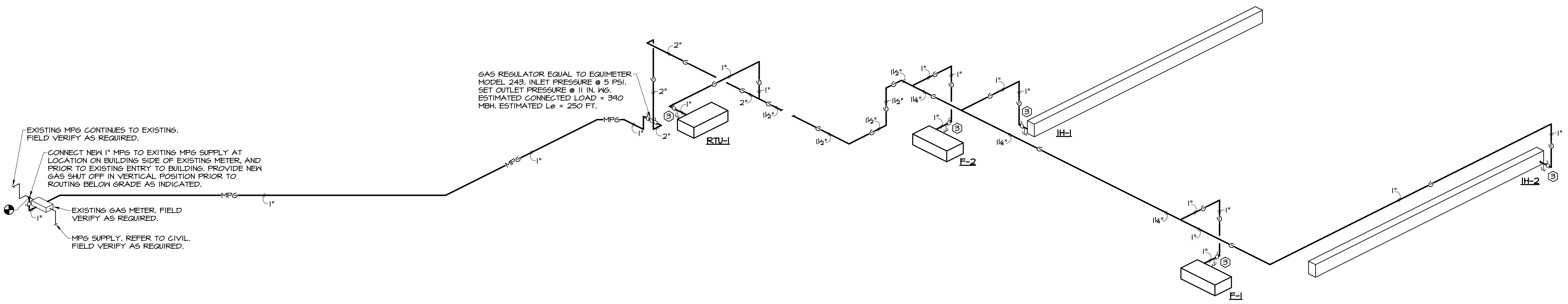
PROJECT NO.
2404

#	REVISION DATES	DESCRIPTION
DATE		

SHEET
P4.2
COPYRIGHT 2024
THE EXCLUSIVE PROPERTY OF
HIGHT JACKSON ASSOCIATES, P.A.
USE OR REPRODUCTION IS PROHIBITED
WITHOUT WRITTEN CONSENT



1 RISER 2
N.T.S.



2 GAS RISER 1
N.T.S.

NOTES:
RE:U2.1 FOR SITE UTILITY PLAN.
RE:PL1 FOR PLUMBING LEGEND AND NOTES.
RE:P5.1 FOR PLUMBING SCHEDULES.

HSA HSAEngineering
479 / 452 / 8922 office
7405 Ellis St.
Fort Smith, AR 72916
HSAConsultants.com

HSA JOB # 24-033



Hight Jackson
ASSOCIATES
5201 W Village Parkway, Suite 3001 Rogers, Arkansas 72761 (479) 464-4965 | www.hjarch.com

A REMODEL AND ADDITION FOR
BENTON CO. DETENTION CENTER
BENTONVILLE, AR

DRAWN BY:
AH
CHECK BY:
NEW
ISSUE DATE:
06/10/2024

PROJECT NO.
2404

REVISION DATES

DATE DESCRIPTION

SHEET
MP2.1

COPYRIGHT 2024
THESE DRAWINGS AND SPECIFICATIONS ARE
THE EXCLUSIVE PROPERTY OF
HIGHT JACKSON ASSOCIATES P.A.
USE OR REPRODUCTION IS PROHIBITED
WITHOUT WRITTEN CONSENT

1 MECHANICAL ROOF PLAN
1/8" = 1'-0"



NOTES:
REFER TO SHEET P1.1 FOR PLUMBING LEGEND, GENERAL AND KEYED NOTES.
REFER TO SHEET P2.1 FOR PLUMBING PLANS. REFER TO SHEET P3.1-P3.2
FOR PLUMBING DETAILS. REFER TO SHEET P4.1 FOR PLUMBING RISERS.
REFER TO SHEET P5.1 FOR PLUMBING SCHEDULES.

HSA HSAEngineering
479 / 452 / 8922 office
7405 Ellis St.
Fort Smith, AR 72916
HSAConsultants.com

HSA JOB # 24-033

