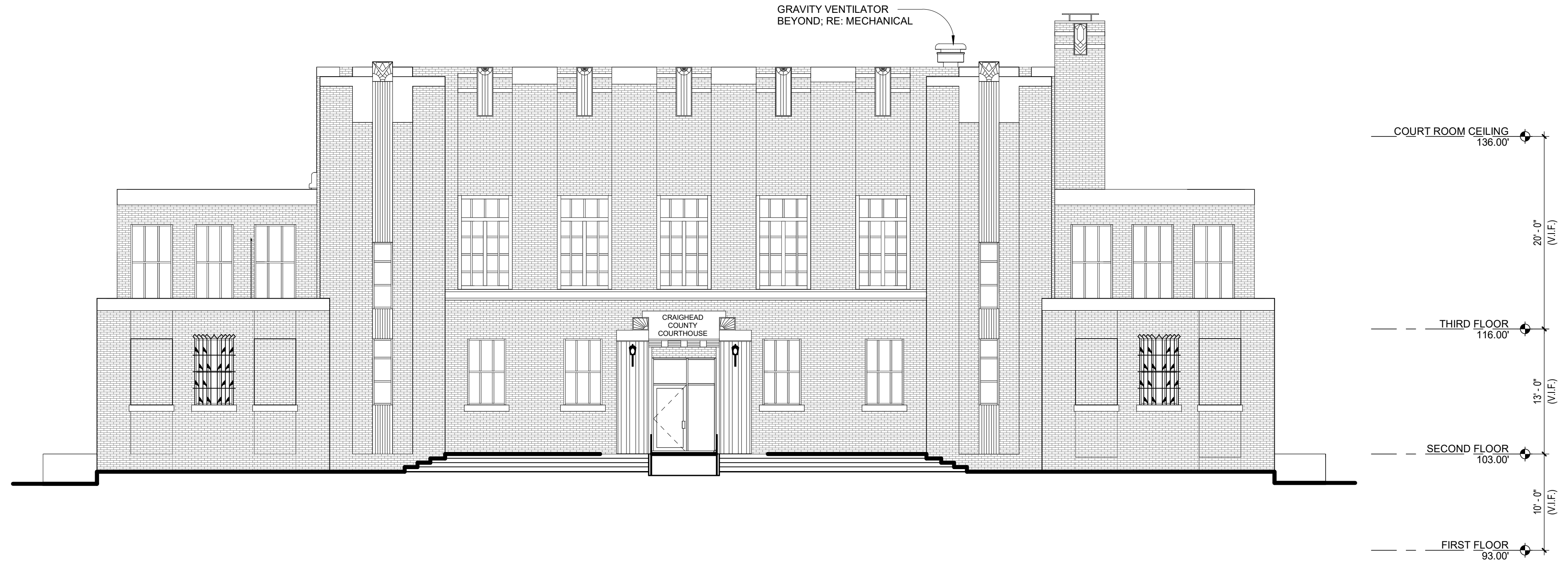




south building elevation

SCALE: 1/8" = 1'-0"



east building elevation

SCALE: 1/8" = 1'-0"

**BRACKETT
 KRENNERICH**
 architects

**MECHANICAL RENOVATIONS FOR:
 CRAIGHEAD COUNTY COURTHOUSE**
 Jonesboro, Arkansas

Revision Schedule		Issued by
Tag	Rev. Description	Rev. Date



Commission Number
 2309D
A201
 Date: November 11, 2024