

**COOPER MIXON**  
ARCHITECTS  
305 Union Street, 2nd Floor Jonesboro, AR 72401  
Phone 870.336.0536 www.coopermixon.com

**CONSTRUCTION DOCUMENTS**

PROJECT NO. \_\_\_\_\_

2224

PROJECT NAME \_\_\_\_\_

BROOKLAND MUNICIPAL CENTER

DATE \_\_\_\_\_

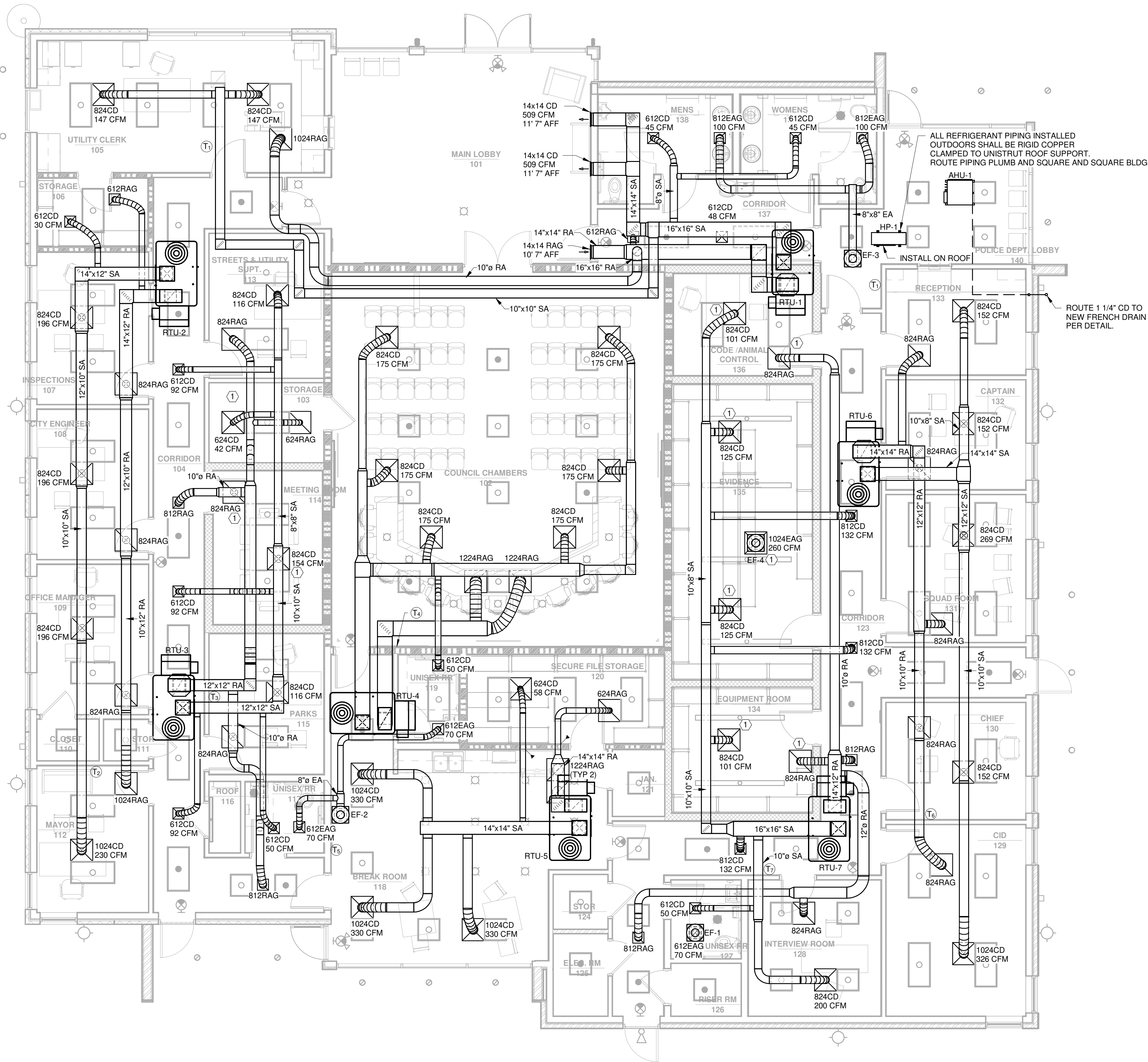
04/19/2024

CONTENTS \_\_\_\_\_

HVAC PLAN

SHEET NUMBER \_\_\_\_\_

**M-101**



ALL REFRIGERANT PIPING INSTALLED OUTDOORS SHALL BE RIGID COPPER CLAMPED TO UNISTRUT ROOF SUPPORT. ROUTE PIPING PLUMB AND SQUARE AND SQUARE BLDG.

ROUTE 1 1/4" CD TO NEW FRENCH DRAIN PER DETAIL.

**KEYED NOTE:**

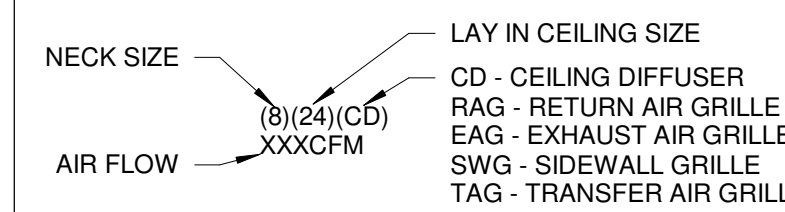
- ① SEE SHELTER PENETRATION DETAIL SHEET M2.1. PROVIDE VERTICAL FIRE DAMPER AT SHELTER PENETRATION.

**GENERAL NOTES:**

- DUCT SIZES INDICATED ARE ACTUAL SHEET METAL DIMENSIONS. WRAP ALL DUCTS WITH FOIL BACKED FIBERGLASS INSULATION EQUAL TO CERTAINTED SOFT TOUCH DUCT WRAP, TYPE 75, R-6 MINIMUM. SECURE EXTERNAL INSULATION TO RECTANGULAR DUCTWORK WITH TAPE AND STAPLES, AND INSTALL PANDUIT STRAPS ON 4' CENTERS TO PREVENT SAGGING. SECURE EXTERNAL INSULATION TO ROUND DUCTWORK WITH TAPE AND STAPLES. IN ADDITION TO EXTERNAL INSULATION, PROVIDE 1/2" LINER FOR FIRST 10' OF ALL RETURN SYSTEMS TO REDUCE NOISE TRANSMISSION. EXHAUST DUCTS (NON GREASE) DO NOT REQUIRE INSULATION.
- SPILL CONDENSATE FROM RTU TO ROOF

**LEGEND**

- ☒ SUPPLY AIR DIFFUSER
- ☒ RETURN AIR GRILLE
- ☒ EXHAUST/TRANSFER AIR GRILLE
- Ⓜ THERMOSTAT
- SA SUPPLY AIR
- RA RETURN AIR
- FA FRESH AIR
- EA EXHAUST AIR
- 1 1/2 HR FIRE DAMPER



NOTE: ROUND BRANCH RUNOUT SIZE SAME SIZE AS DIFFUSER NECK UNLESS OTHERWISE SPECIFIED ON DRAWING.

1 HVAC PLAN  
3/16" = 1'-0"

