



BUC-EE'S

A DEVELOPMENT OF

Buc-ee's Benton, LLC
Saline County, AR

TEL: (978) 230-2920

BUC-EE'S TRAVEL CENTER
BENTON, ARKANSAS
74K - L - 2024 - Q2
INTERSTATE 30 & STATE HIGHWAY 229
BENTON, ARKANSAS 72019

LAWRENCE S.
LEVINSON, A.I.A.

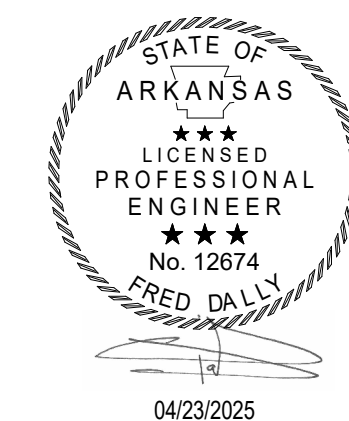
7800 Washington Ave., Suite 600 Houston, TX 77007
main: 713.600.3900 www.laarc.com

Dally
+ ASSOCIATES
STRUCTURAL ENGINEERS

18800 Richmond Avenue, Suite 600
Houston, Texas 77042 1713.337.8881
TEXAS REGISTERED ENGINEERING
FIRM F-3426

Arkansas Firm Registration No. 2894
D + A PROJECT No. 24-062-00

ISSUE/REVISION LOG:		
No.	DESCRIPTION	DATE
2	OWNER CHANGES	09/27/2024
3	OWNER CHANGES	04/23/2025



ISSUED FOR REVIEW:	04/23/2024
ISSUED FOR BID:	05/14/2024
ISSUED FOR PERMIT:	05/14/2024

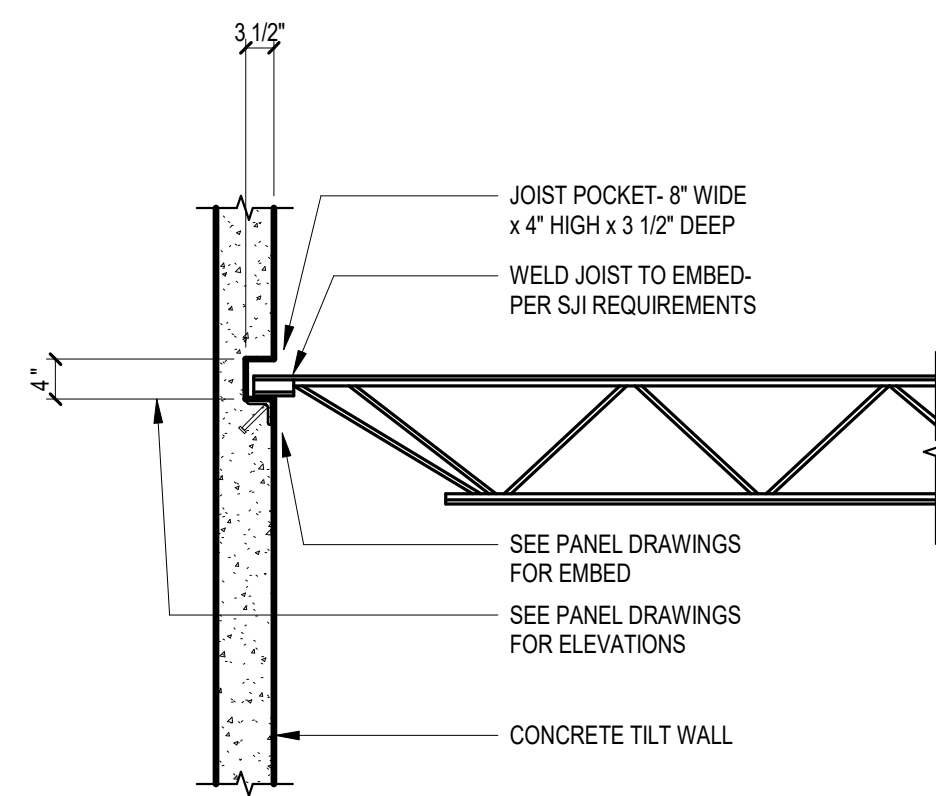
Copyright 2024 Lawrence S. Levinson, AIA. Warning: This document is protected by U.S. Copyright Law Under Section 102 of the U.S. Copyright and the Architectural Works Copyright Protection Act of 1990. Unauthorized reproduction and distribution of this document or any portion of it, other than for use of this particular project, is prohibited and may result in severe civil and criminal penalties, and will be prosecuted to maximum extent possible under the law.

S5.0

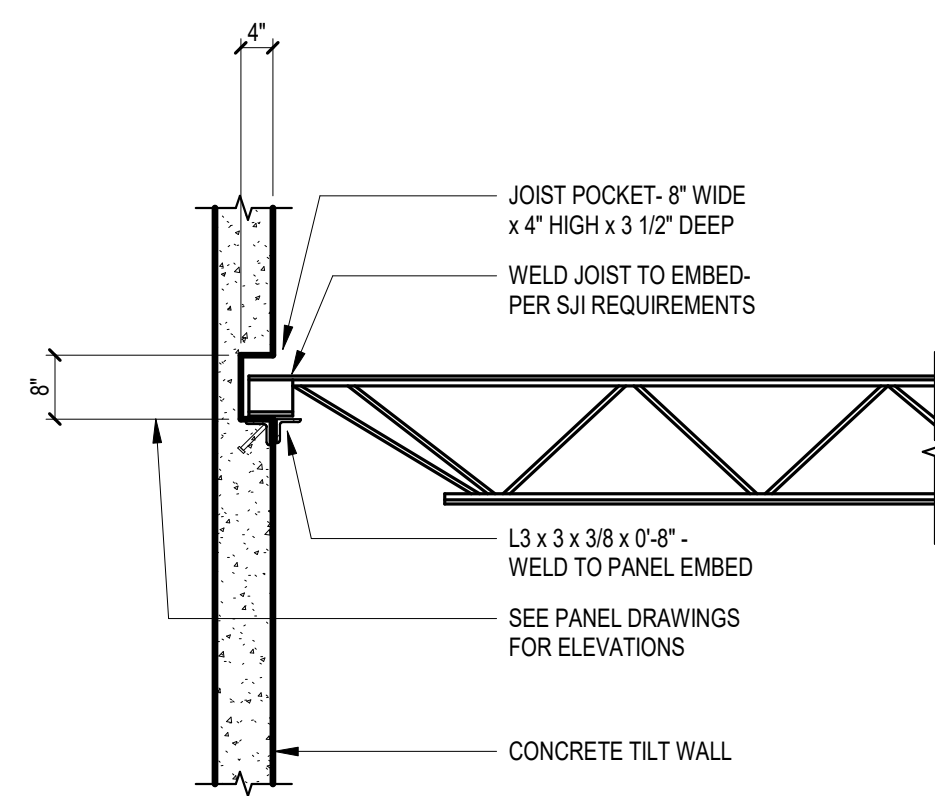
ROOF FRAMING DETAILS

LAARC PROJECT NUMBER: 2024-107.000

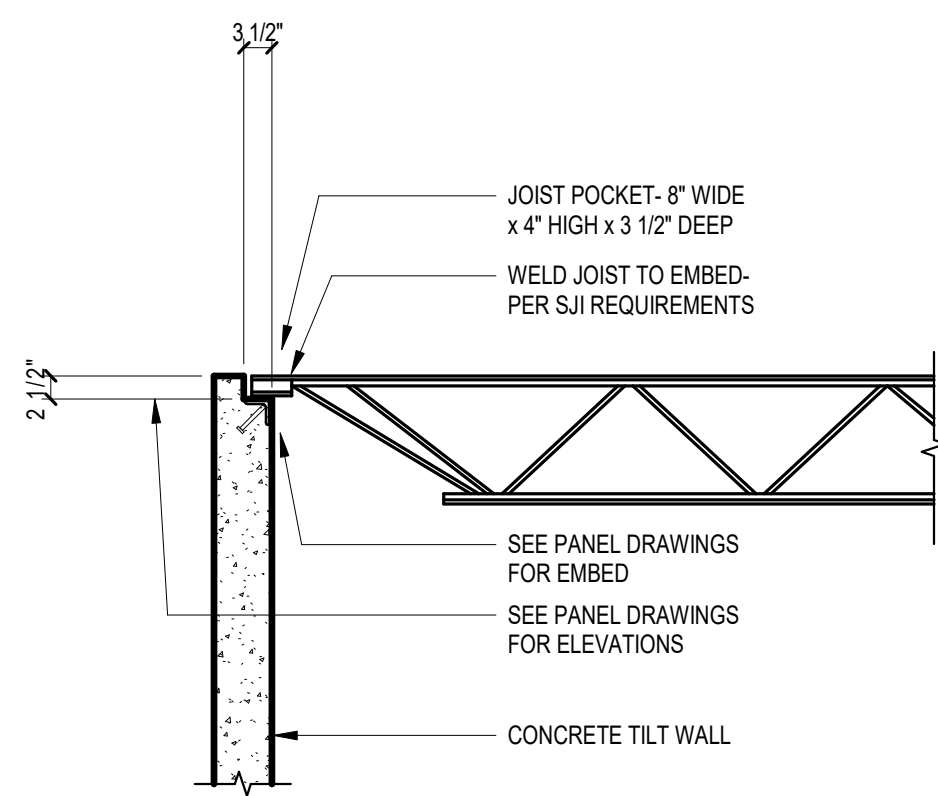
BENTON, ARKANSAS



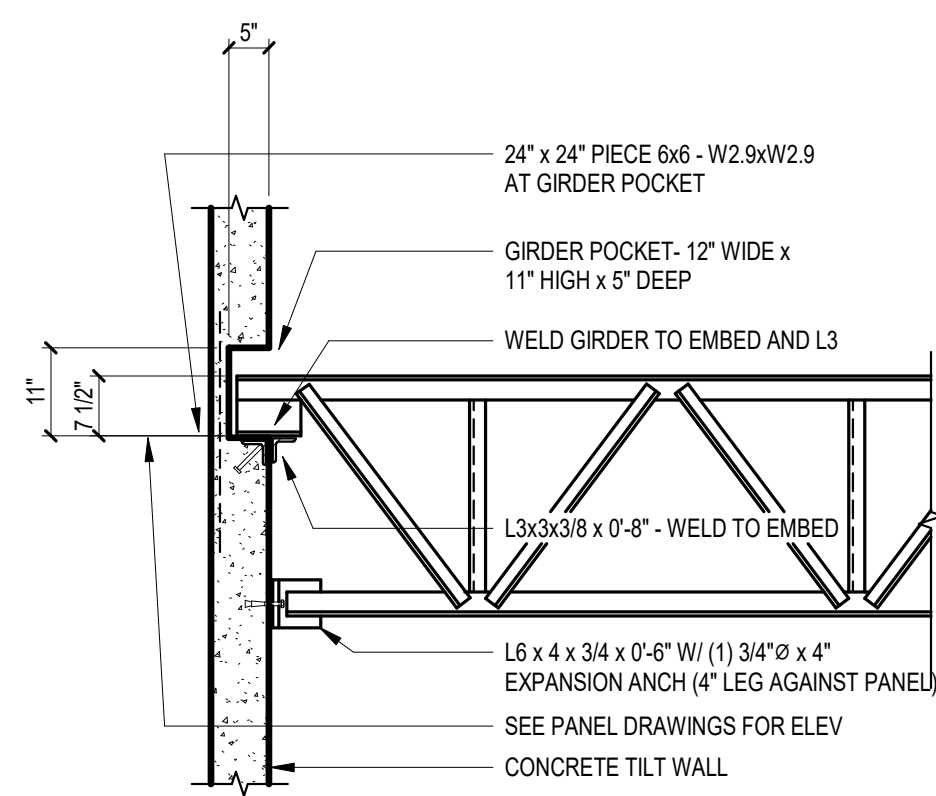
① JOIST POCKET DETAIL ("F" EMBED)



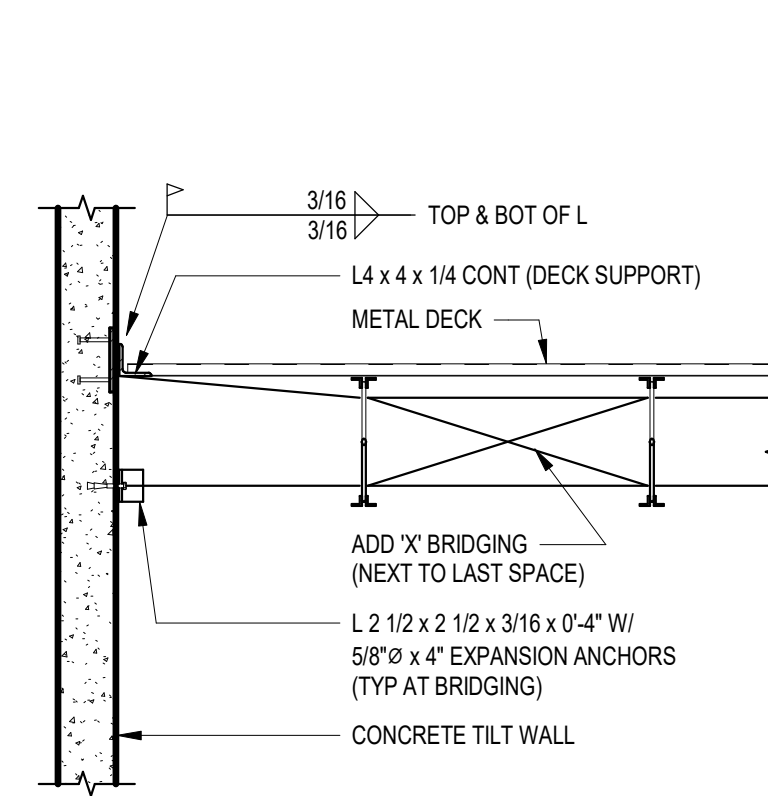
② JOIST POCKET DETAIL ("F1" EMBED)



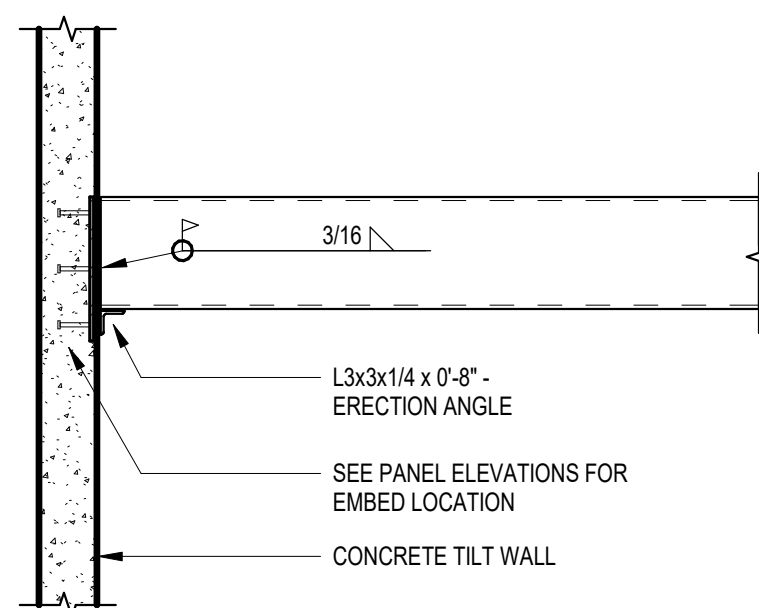
③ JOIST POCKET DETAIL ("F" EMBED)



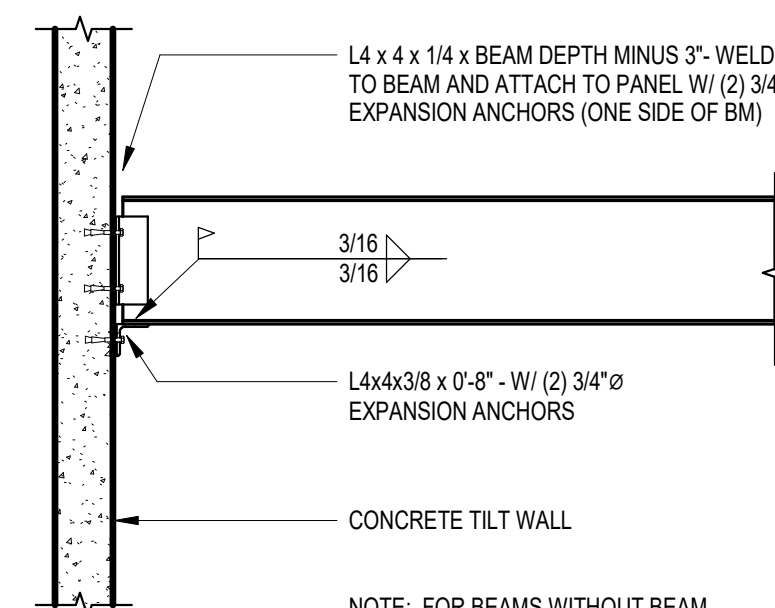
④ JOIST GIRDER POCKET DETAIL



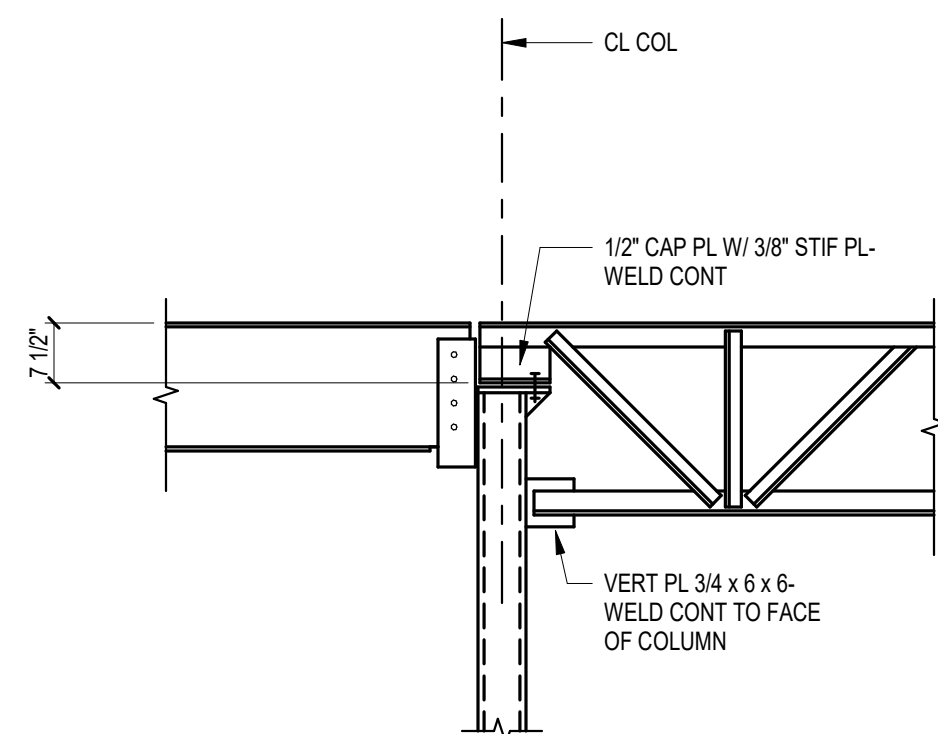
⑤ PANEL SIDEWALL DETAIL



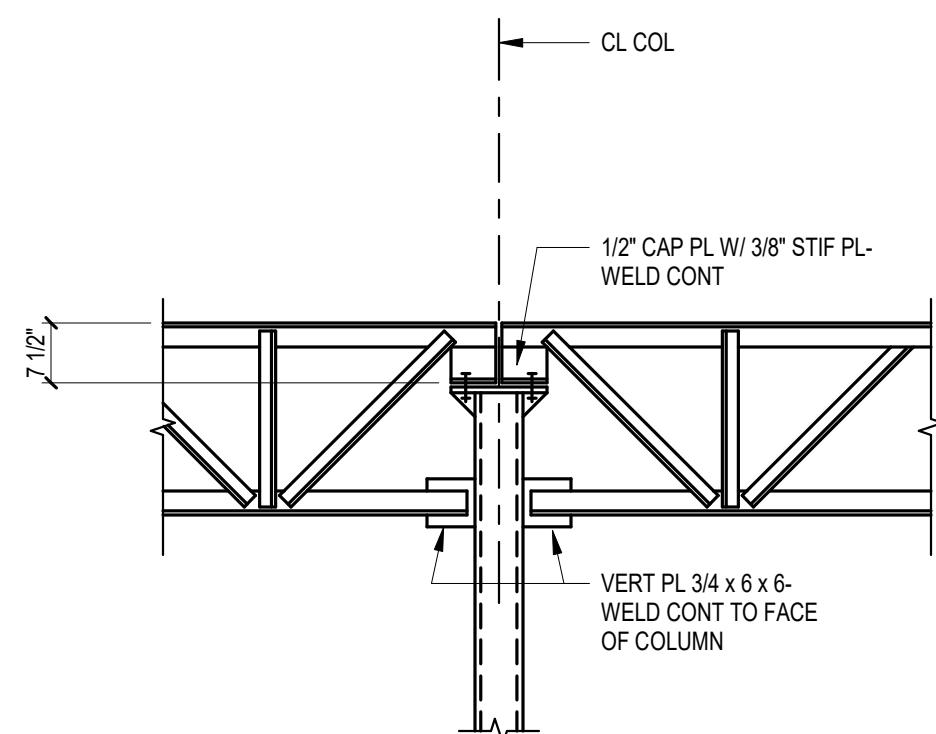
⑥ SURFACE MOUNTED HSS BM CONN
1/2" = 1'-0"



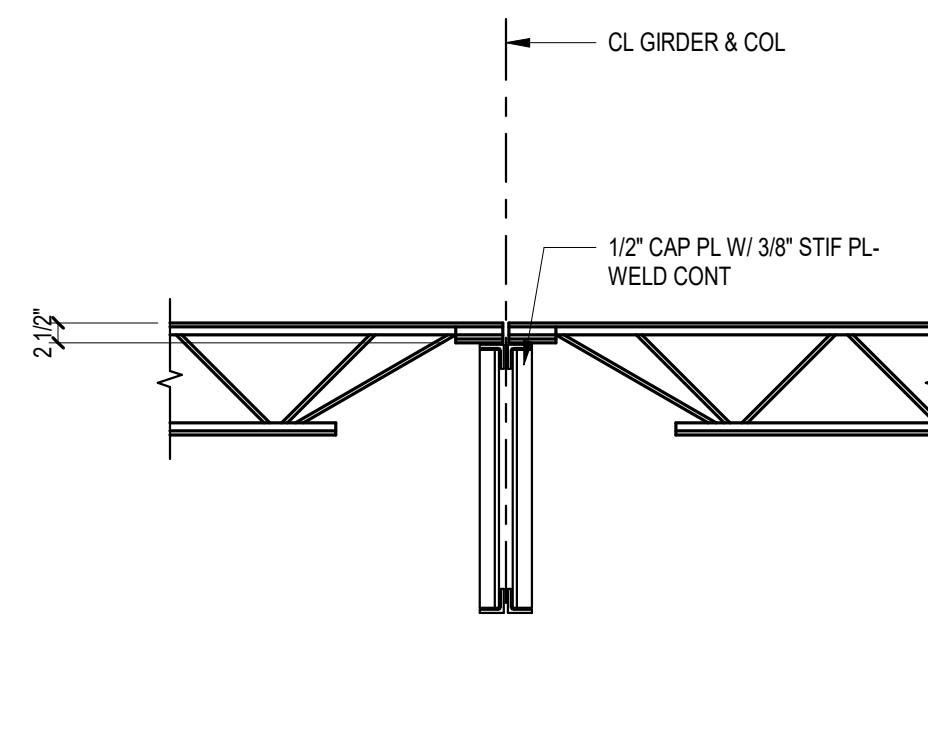
⑦ SURFACE MOUNTED BEAM CONN



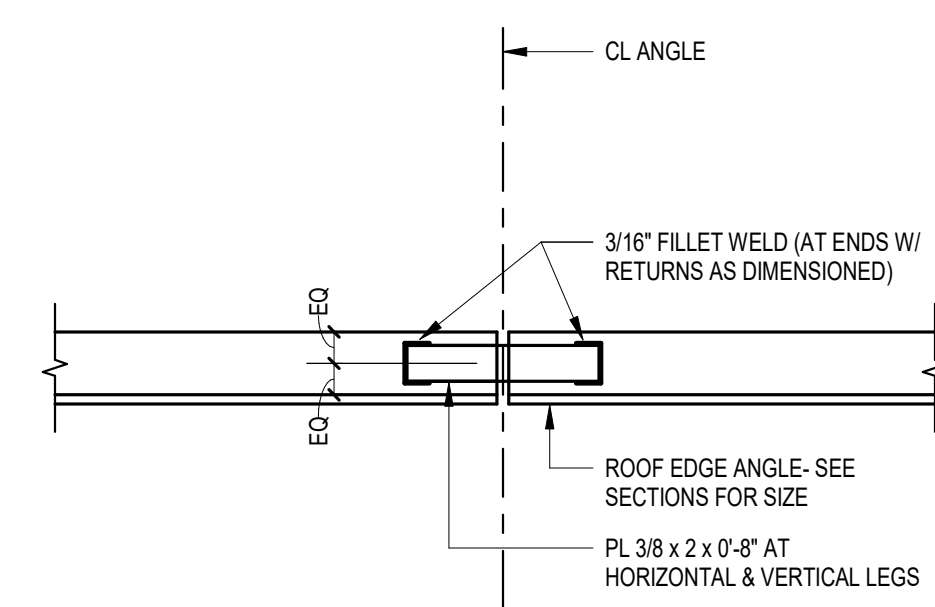
⑧ BEAM & GIRDER TO COL CONN



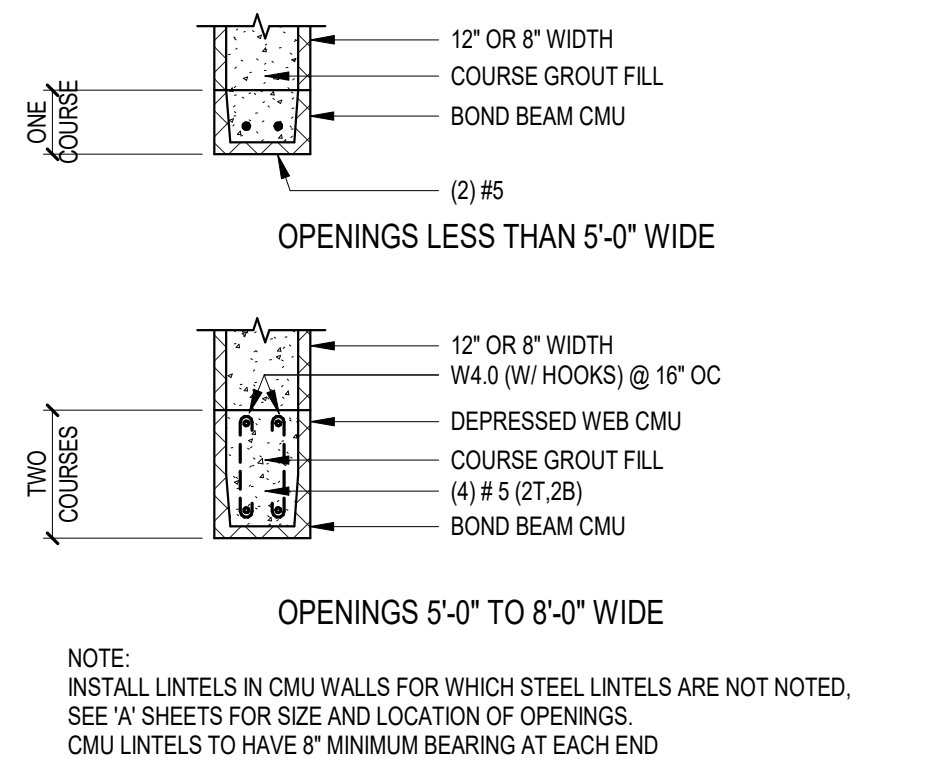
⑨ BEAM & GIRDER TO COL CONN



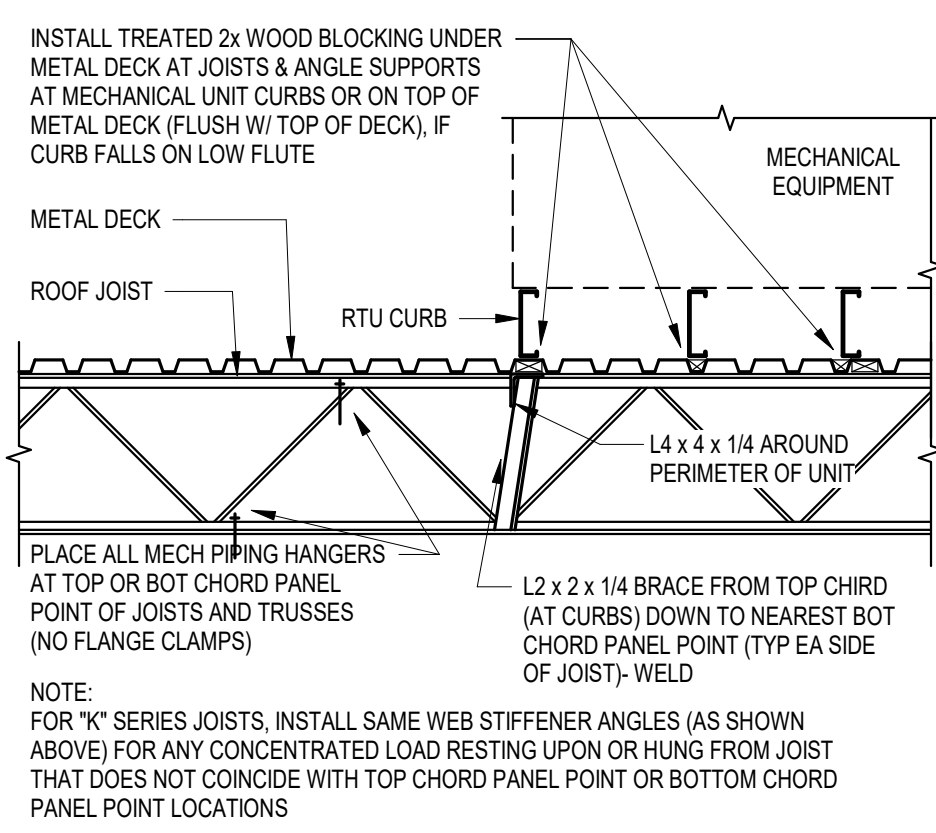
⑩ INTERIOR GIRDER & JOISTS



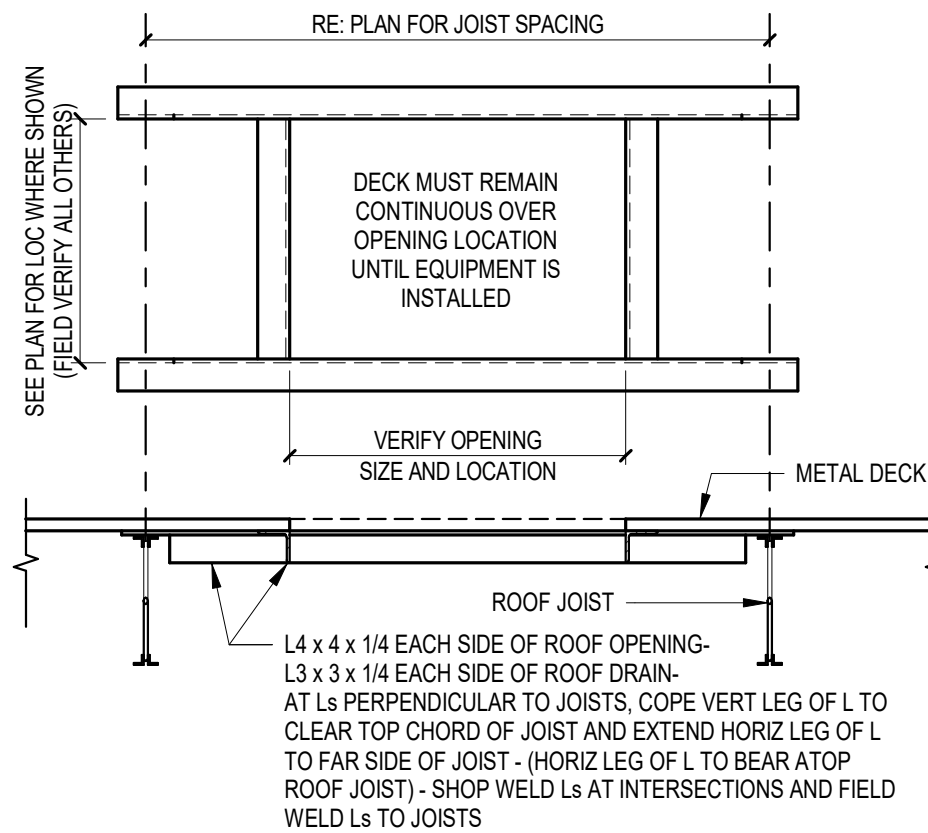
⑪ ROOF EDGE ANGLE SPLICE DETAIL
1/2" = 1'-0"



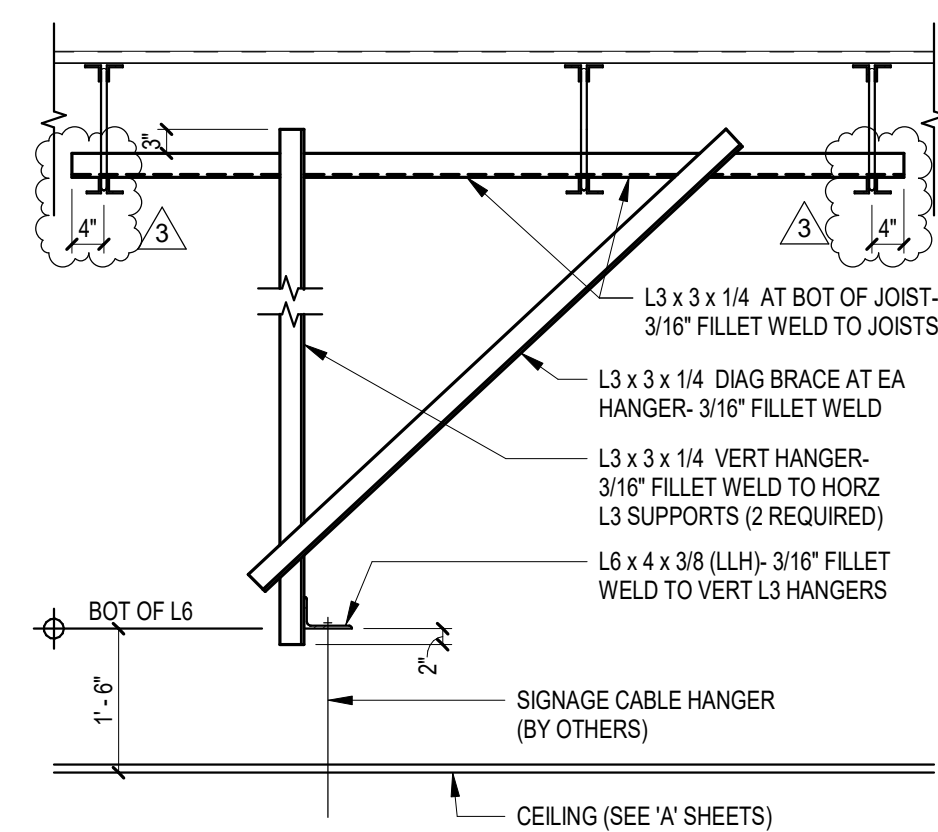
⑫ REINFORCED CMU LINTEL DETAIL



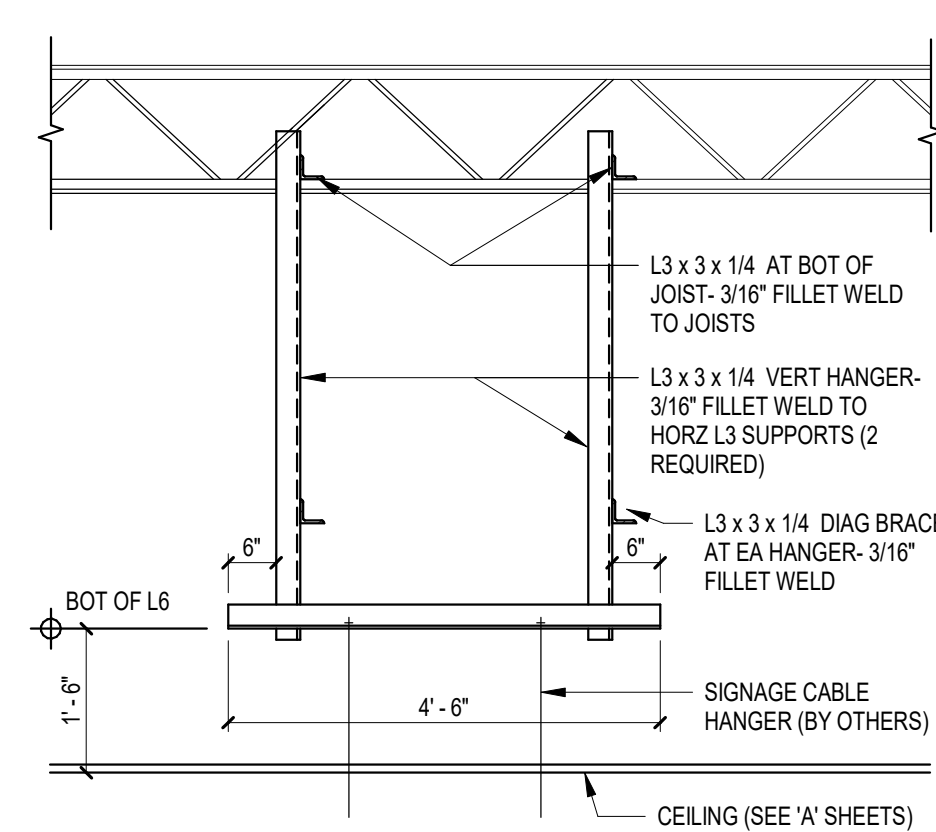
⑬ ROOFTOP UNIT (HVAC) SUPPORT



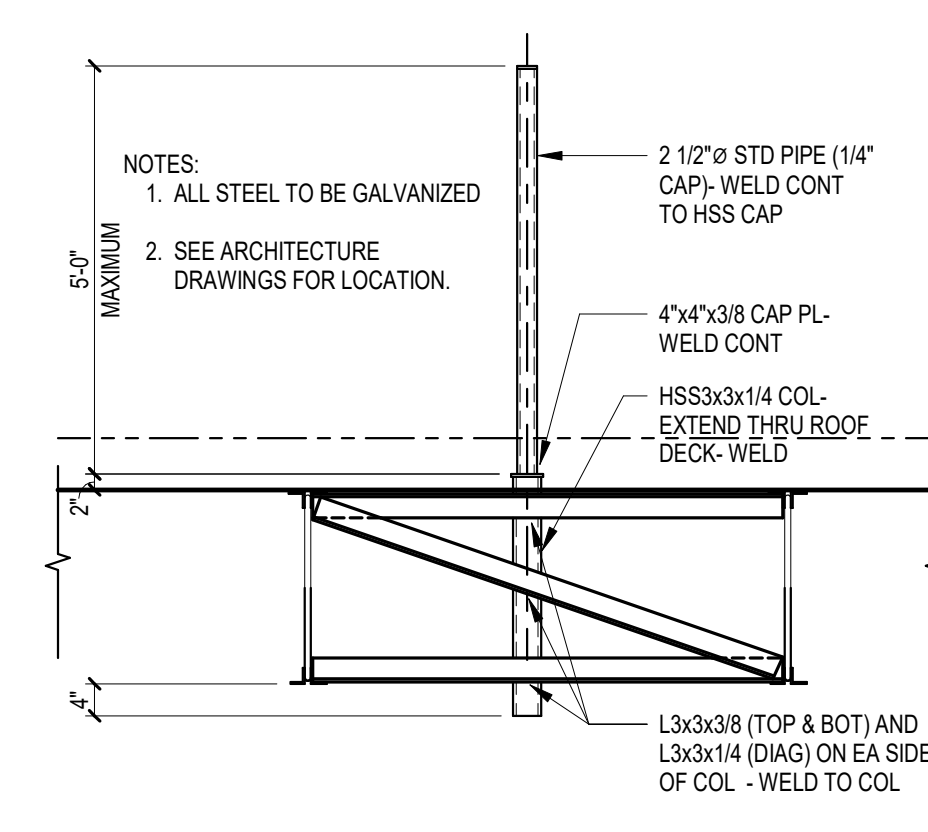
⑭ TYP METAL DECK OPENING DETAIL



⑮ SIGNAGE HANGER DETAILS
1/2" = 1'-0"



⑮ CONDENSER ATTACHMENT DETAIL
1/2" = 1'-0"



⑯ COMM. ANTENNA SUPPORT DETAIL
1/2" = 1'-0"

