



**BUC-EE'S**

A DEVELOPMENT OF

Buc-ee's Benton, LLC  
Saline County, AR

TEL: (979) 230-2920

**BUC-EE'S TRAVEL CENTER  
BENTON, ARKANSAS**

**74K - L - 2024 - Q2**

**INTERSTATE 30 & STATE HIGHWAY 229  
BENTON, ARKANSAS 72019**

**LAWRENCE S.  
LEVINSON, A.I.A.**

7800 Washington Ave., Suite 600  
main: 713.600.3900

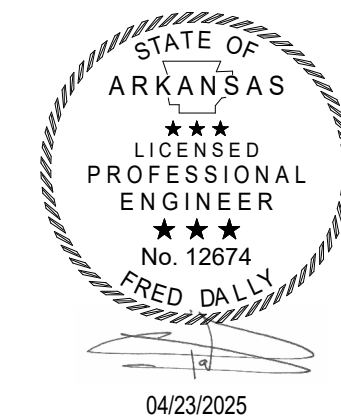
Houston, TX 77007  
www.laarc.com

**Dally**  
+ ASSOCIATES  
STRUCTURAL ENGINEERS

18800 Richmond Avenue, Suite 600  
Houston, Texas 77042 1713.337.8881  
TEXAS REGISTERED ENGINEERING  
FIRM F-3426

Arkansas Firm Registration No. 2894  
D + A PROJECT No. 24-062-00

ISSUE/REVISION LOG:		
No.	DESCRIPTION	DATE
2	OWNER CHANGES	09/27/2024
3	OWNER CHANGES	04/23/2025



ISSUED FOR REVIEW:	04/23/2024
ISSUED FOR BID:	05/14/2024
ISSUED FOR PERMIT:	05/14/2024

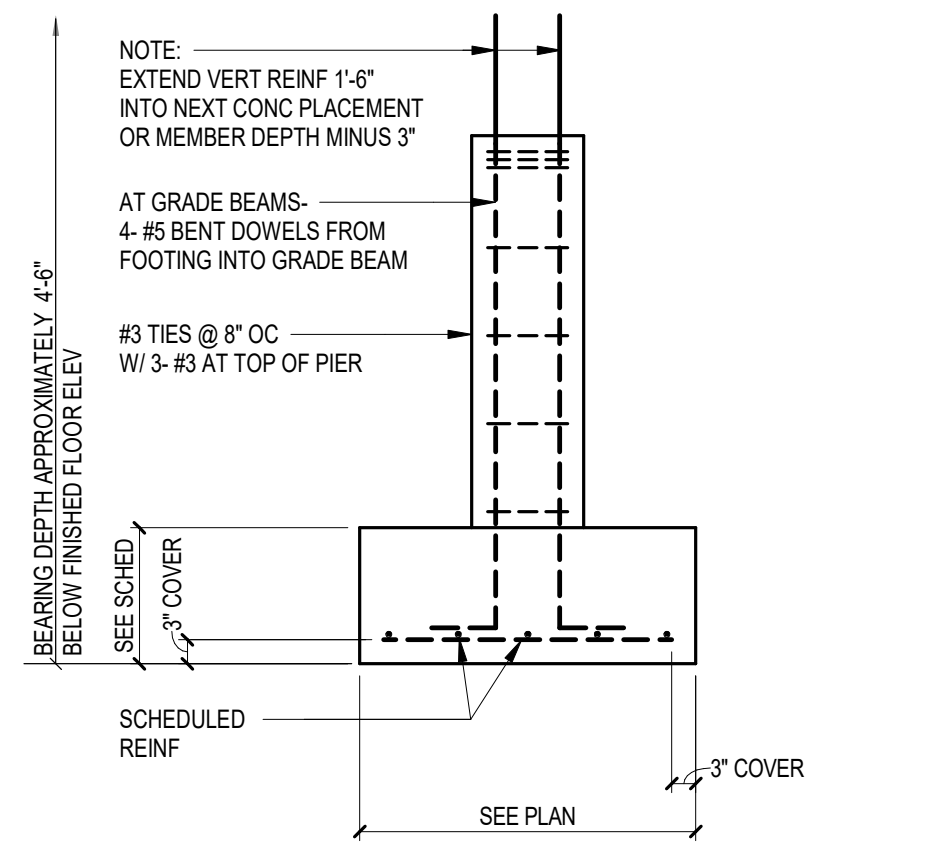
Copyright 2024 Lawrence S. Levinson, AIA. Warning: This document is protected by U.S. Copyright Law Under Section 102 of the U.S. Copyright and the Architectural Works Copyright Protection Act of 1990. Unauthorized reproduction and distribution of this document or any portion of it, other than for use of this particular project, is prohibited and may result in severe civil and criminal penalties, and will be prosecuted to maximum extent possible under the law.

**S4.0**

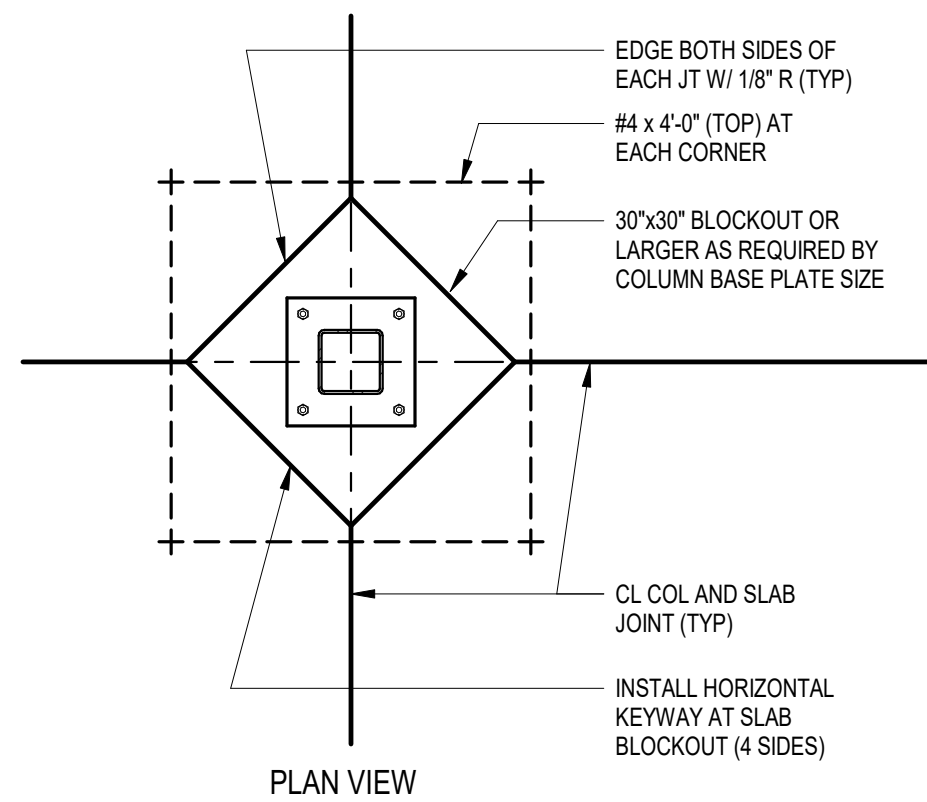
FOUNDATION DETAILS

LAARC PROJECT NUMBER: 2024-107.000

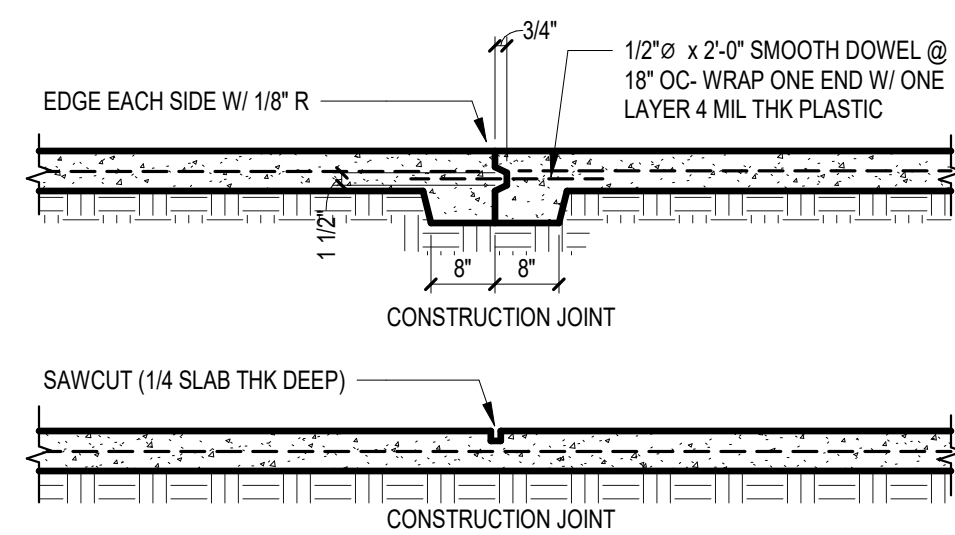
**BENTON, ARKANSAS**



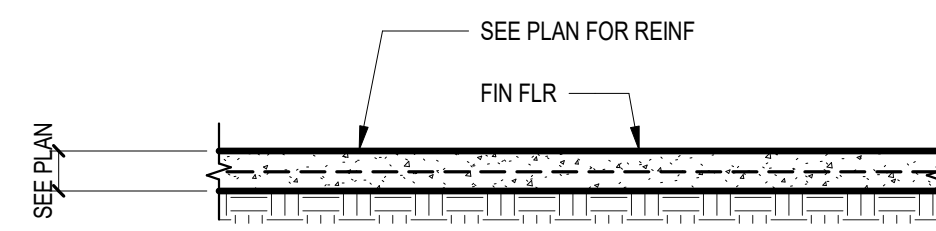
**1 TYPICAL SPREAD FOOTING DETAIL**  
1/2" = 1'-0"



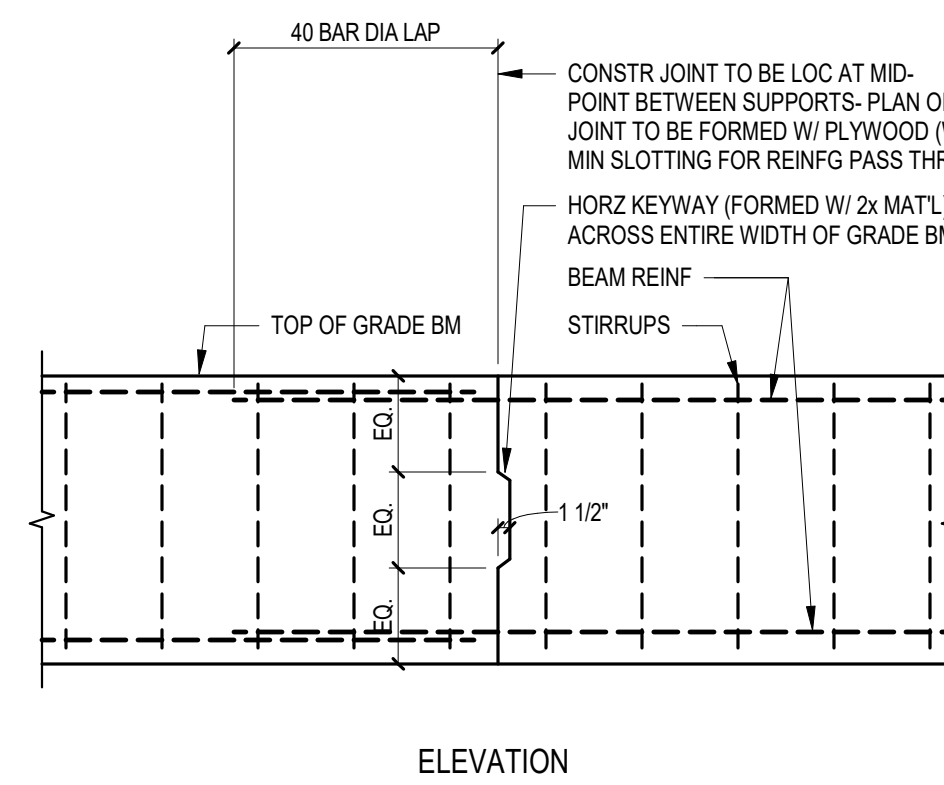
**2 SLAB BLOCKOUT AT INTERIOR COL**  
1/2" = 1'-0"



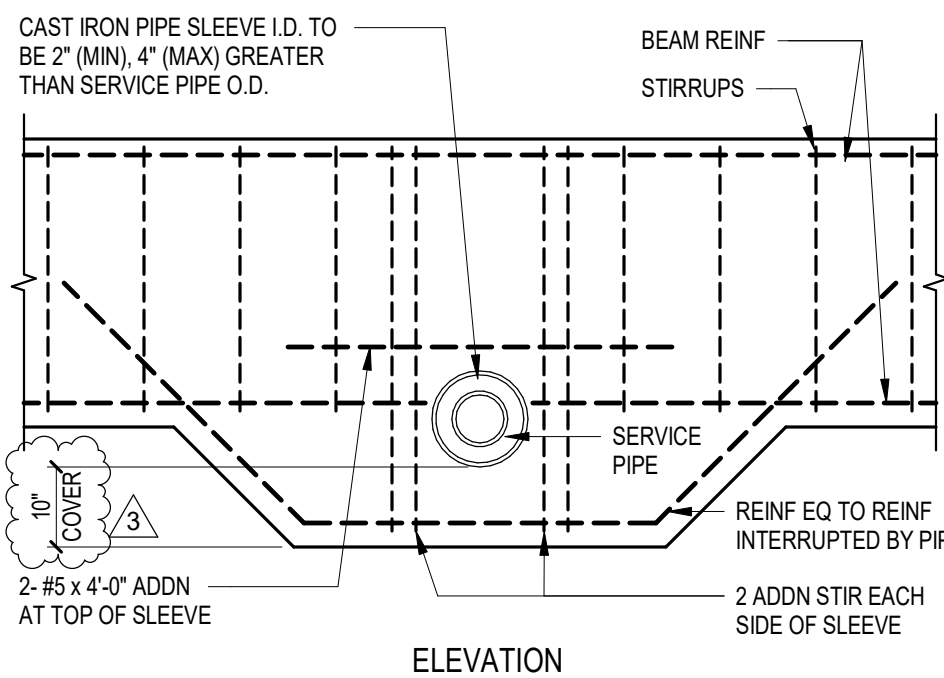
**3 SLAB CONNECTION DETAIL**  
1/2" = 1'-0"



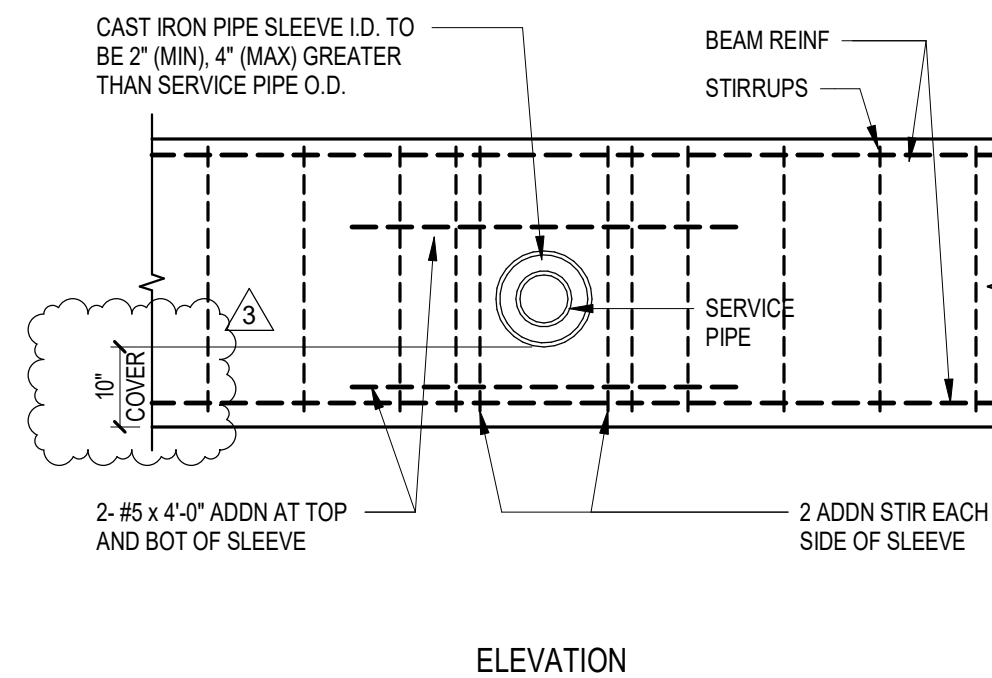
**4 SLAB-ON-GRADE DETAIL**  
1/2" = 1'-0"



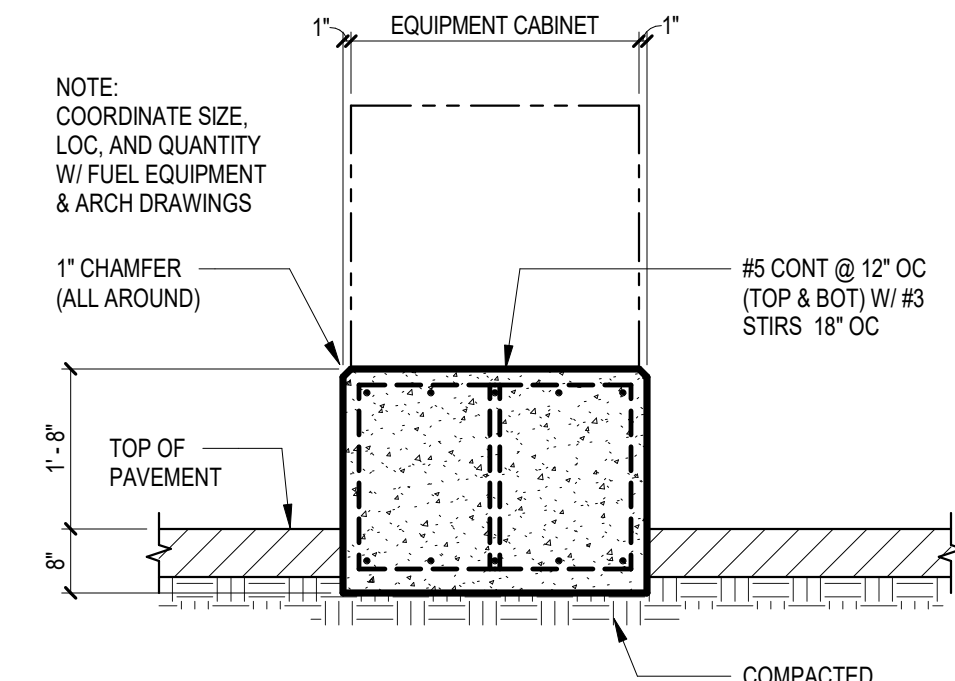
**5 GRADE BEAM CONSTRUCTION JOINT**  
1/2" = 1'-0"



**6 PIPE SLEEVE THRU GRADE BEAM**  
1/2" = 1'-0"



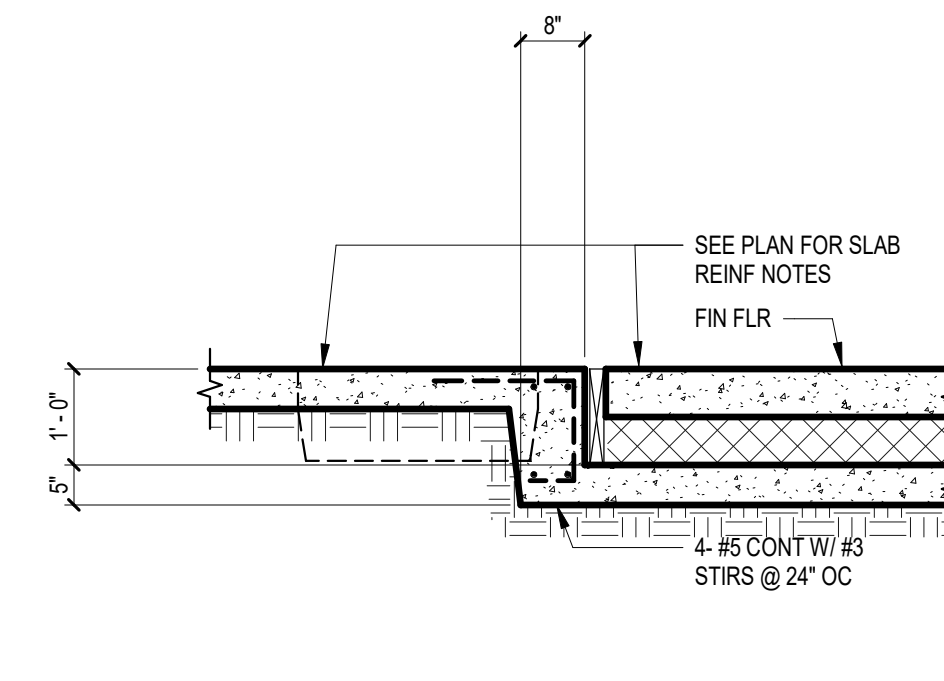
**7 PIPE SLEEVE THRU GRADE BEAM**  
1/2" = 1'-0"



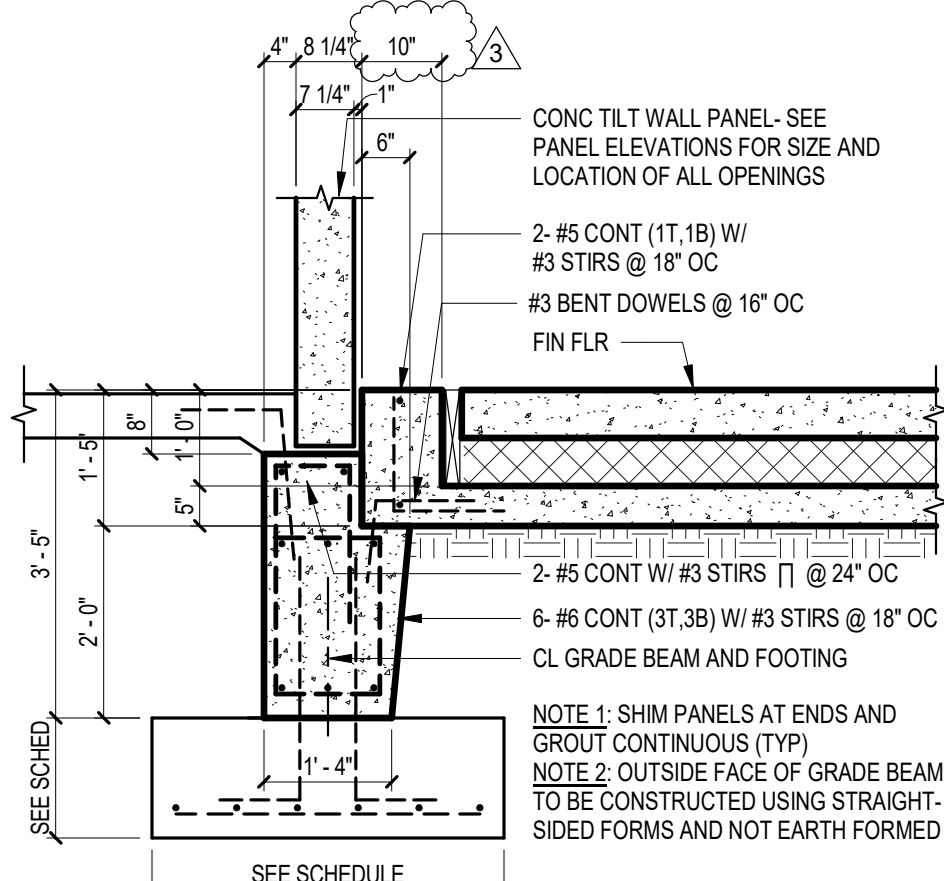
**8 IDF & CCTV CABINET BASE DETAIL**  
1/2" = 1'-0"



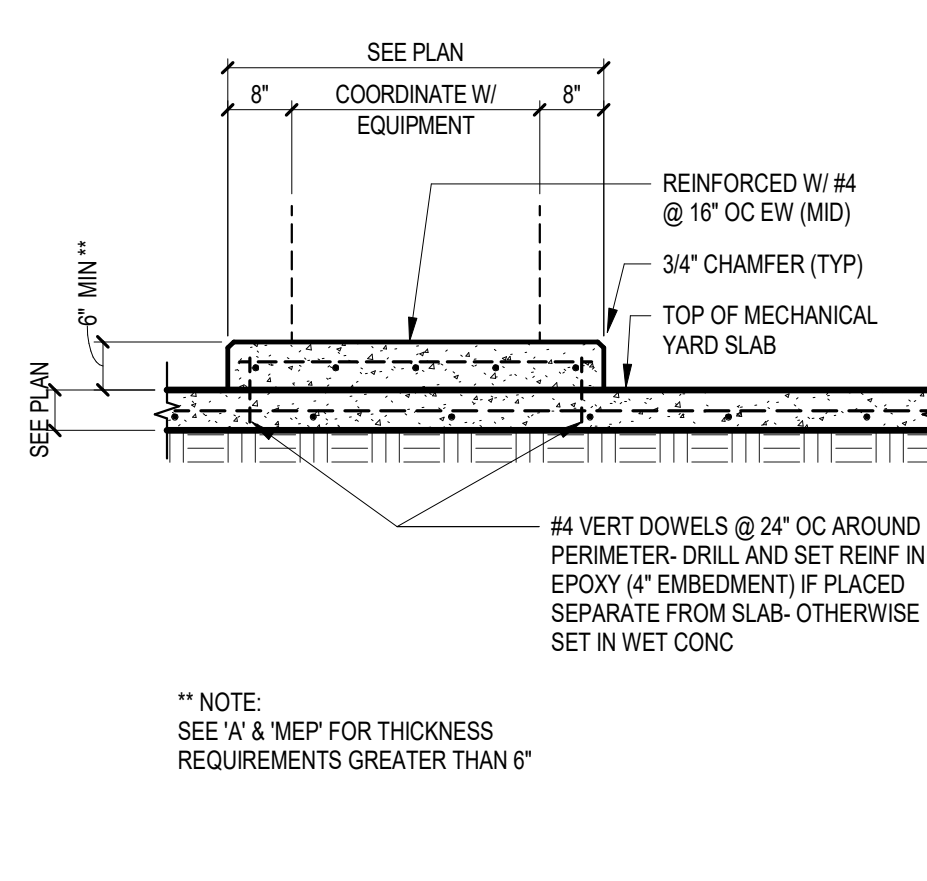
**9 NOT USED**  
1/2" = 1'-0"



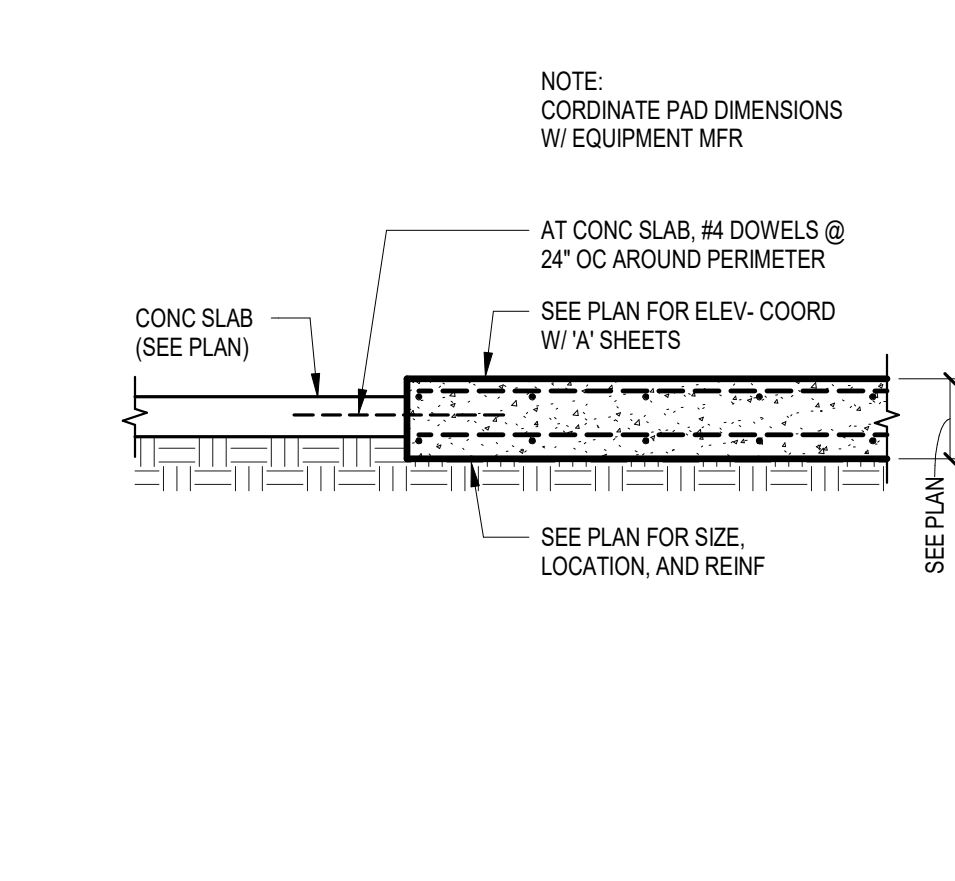
**10 GRADE BEAM @ INSULATED SLAB**  
1/2" = 1'-0"



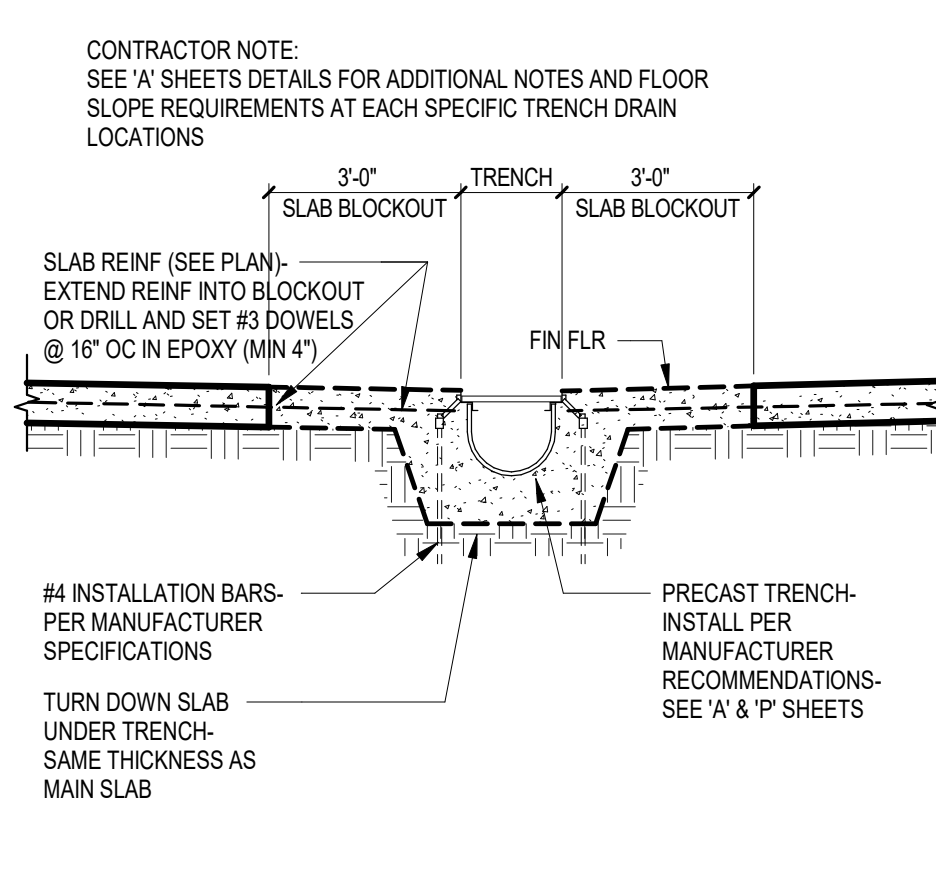
**11 GRADE BEAM @ INSULATED SLAB**  
1/2" = 1'-0"



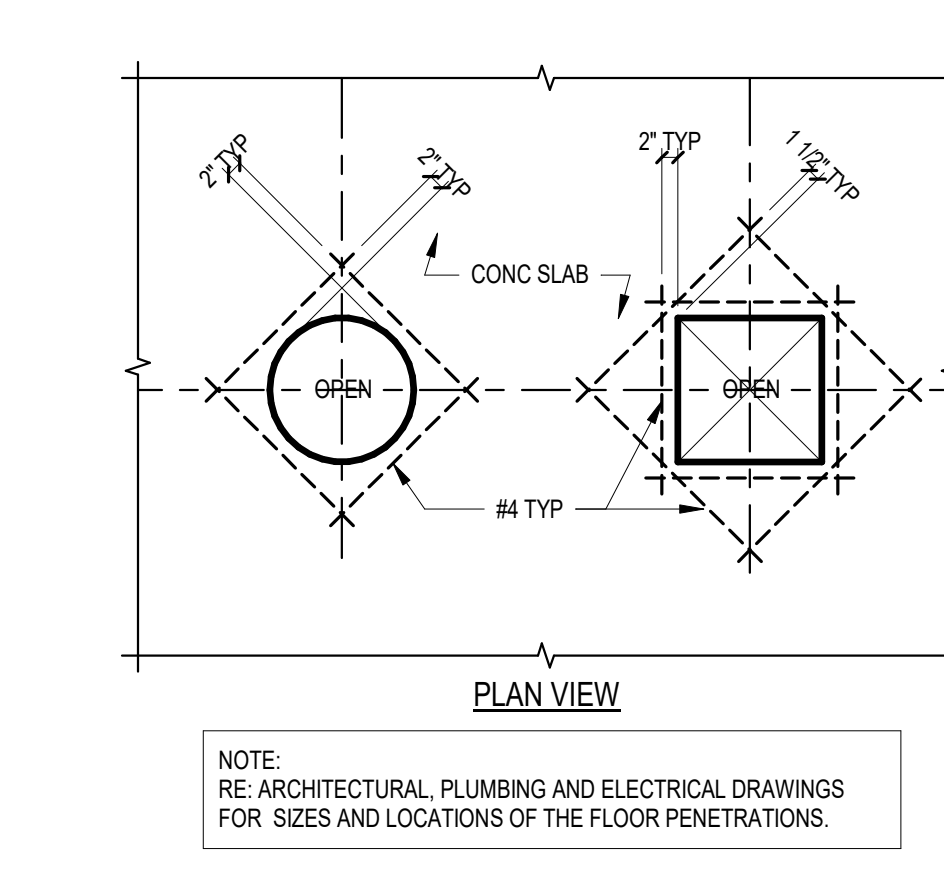
**12 EQUIPMENT HOUSE-KEEPING PAD**  
1/2" = 1'-0"



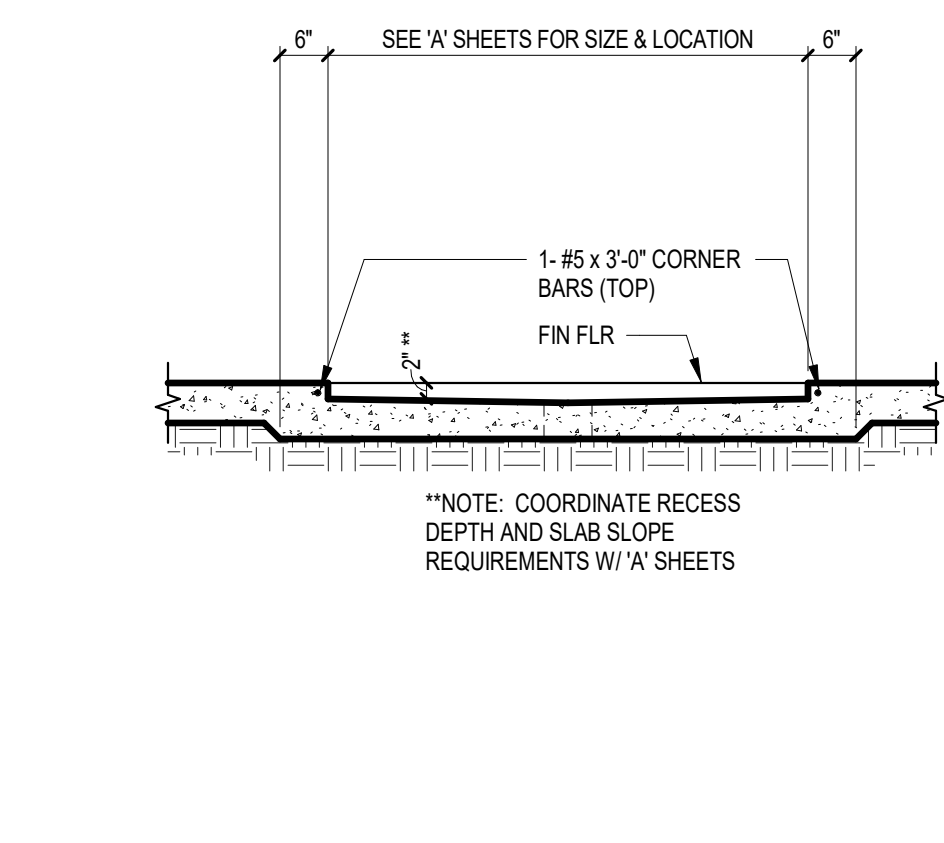
**13 EQUIPMENT HOUSE-KEEPING PAD**  
1/2" = 1'-0"



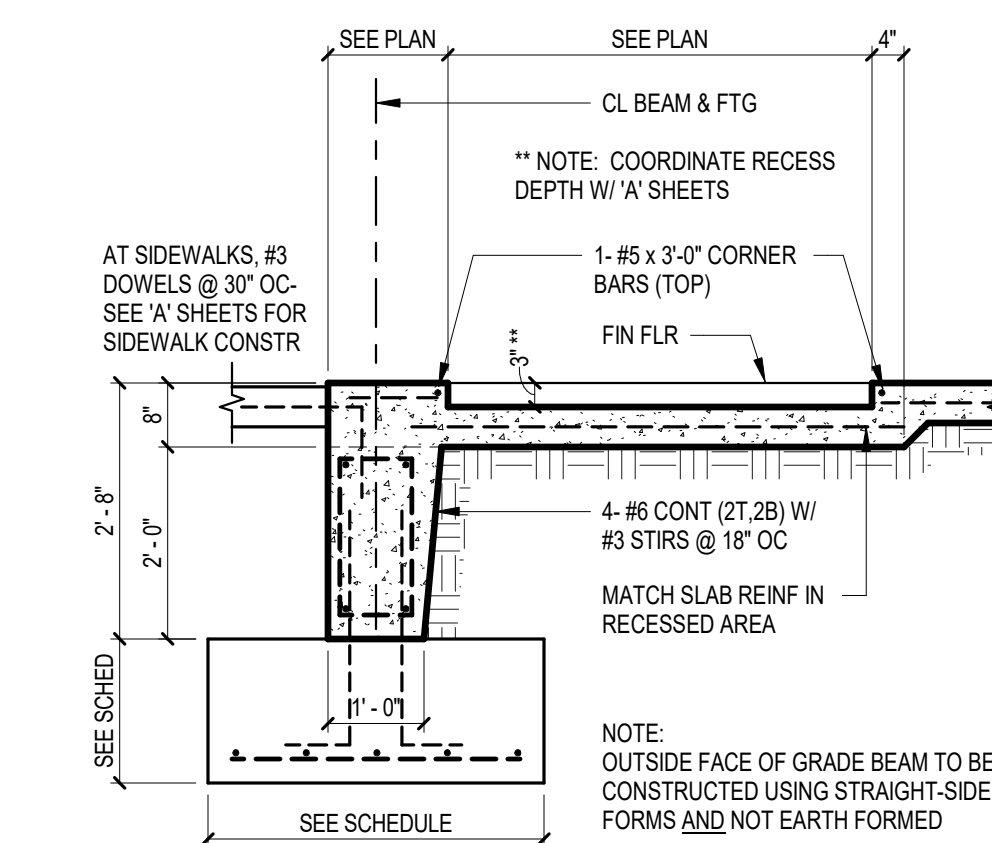
**14 FLOOR TRENCH DETAIL**  
1/2" = 1'-0"



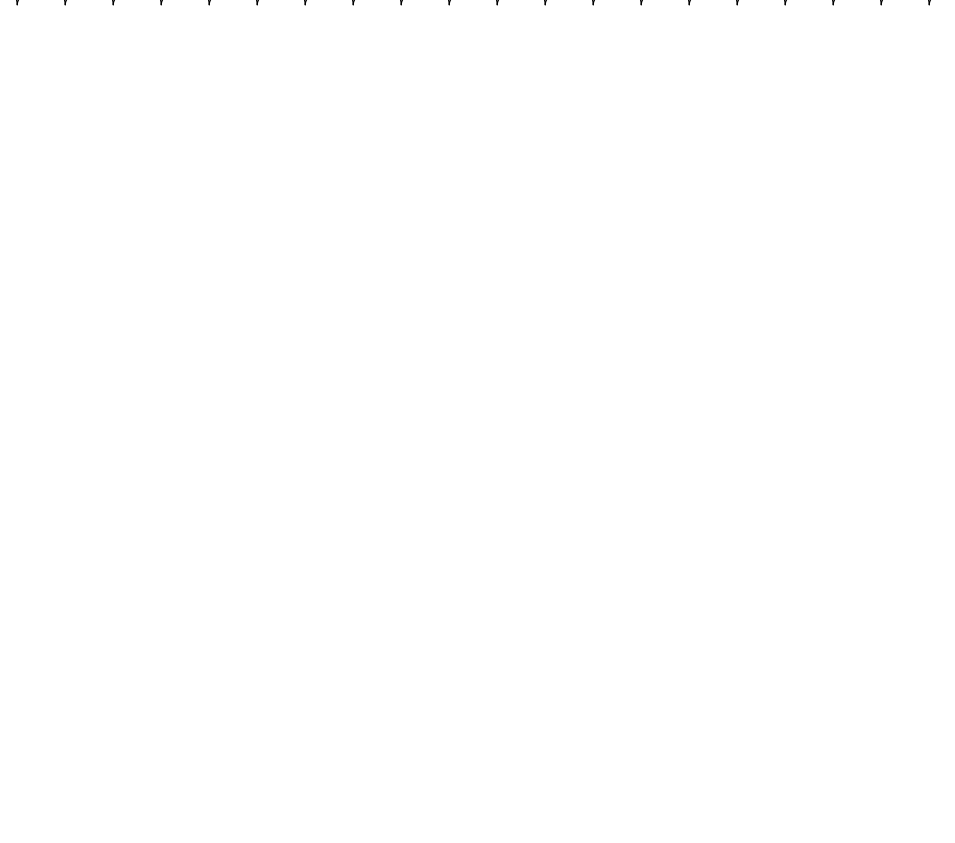
**15 CORNER REINF AT SLAB OPENINGS**  
1/2" = 1'-0"



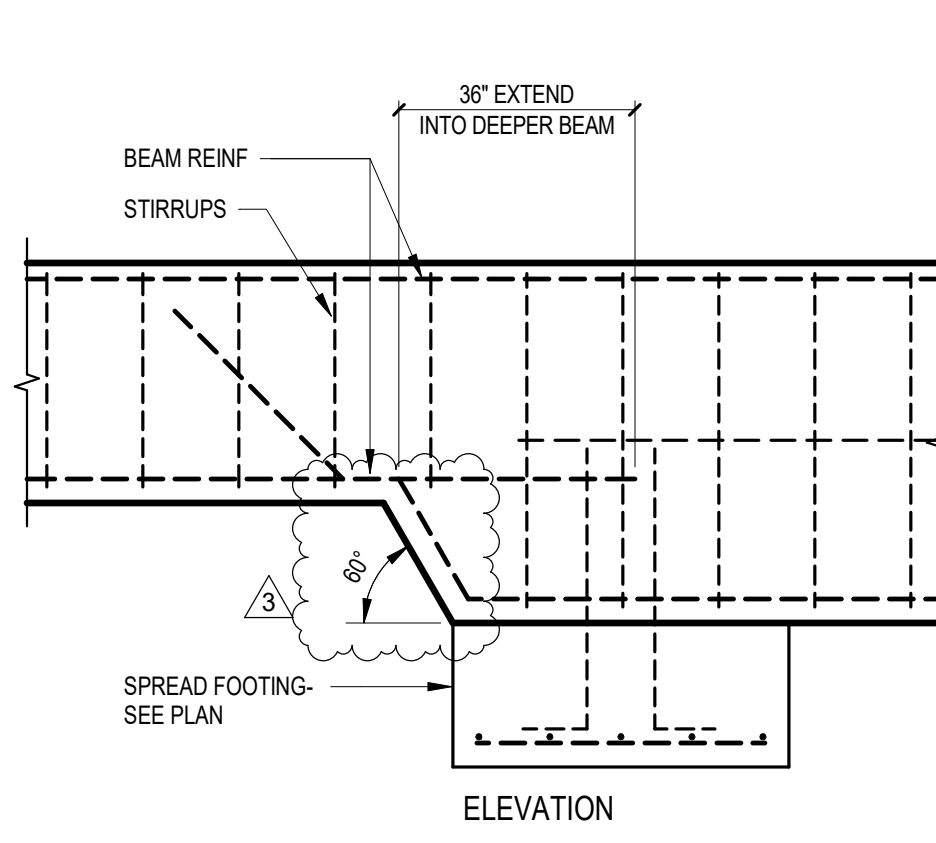
**16 TYPICAL RECESSED SLAB DETAIL**  
1/2" = 1'-0"



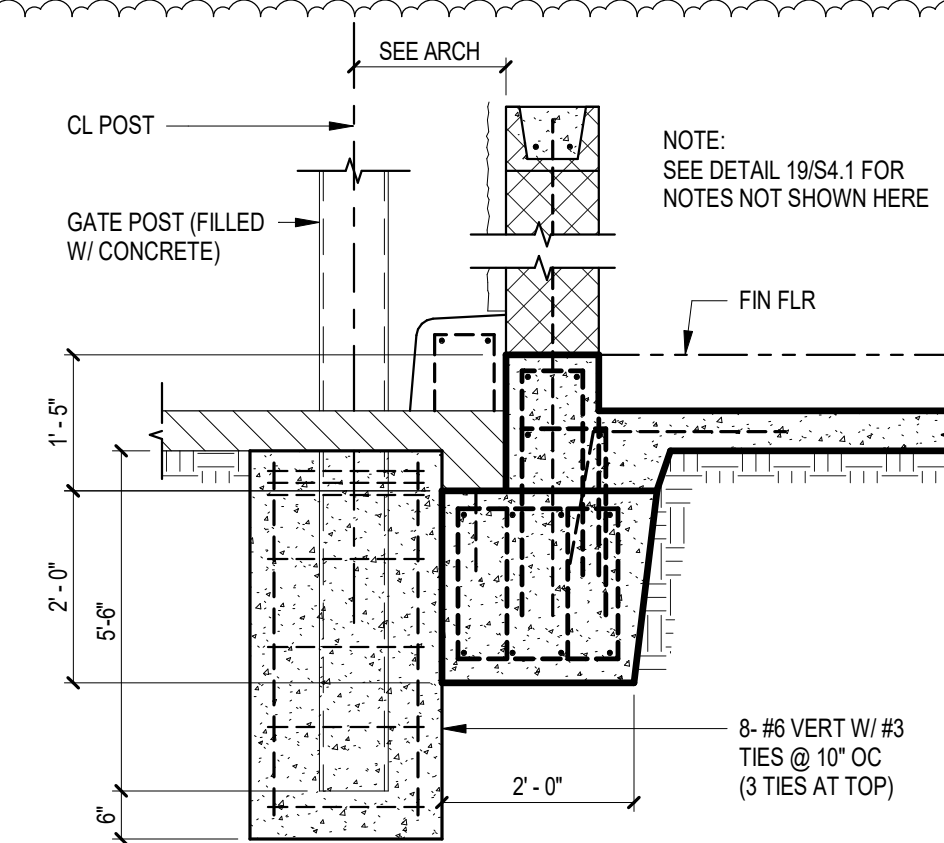
**17 RECESSED ENTRY MAT DETAIL**  
1/2" = 1'-0"



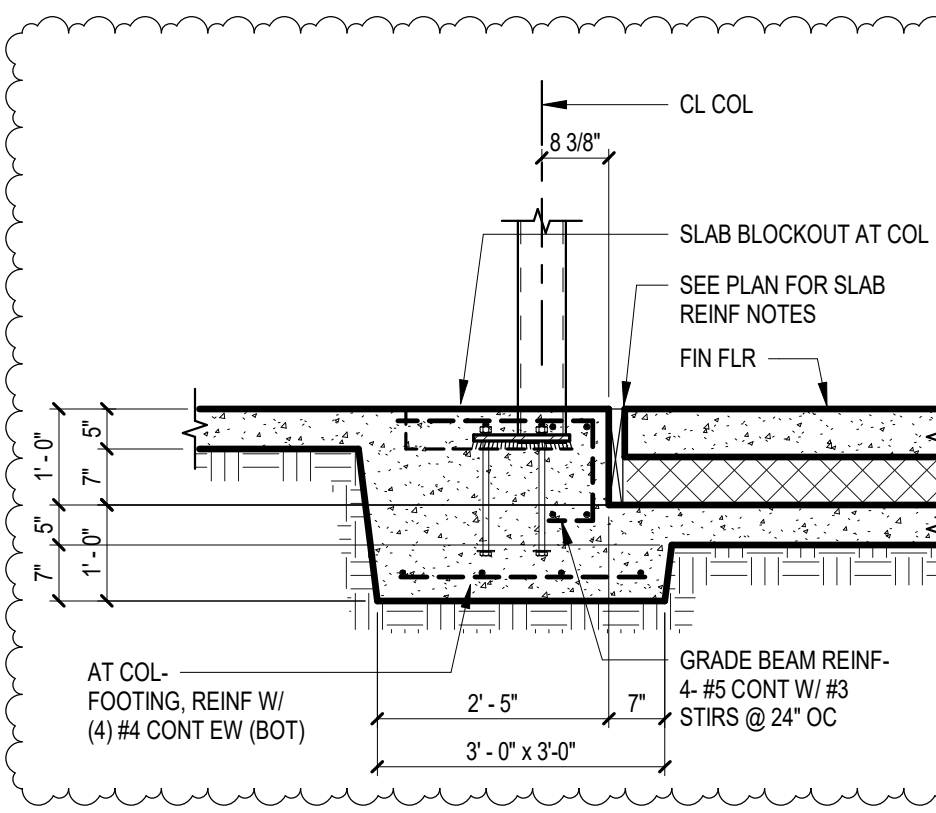
**18 NOT USED**  
1/2" = 1'-0"



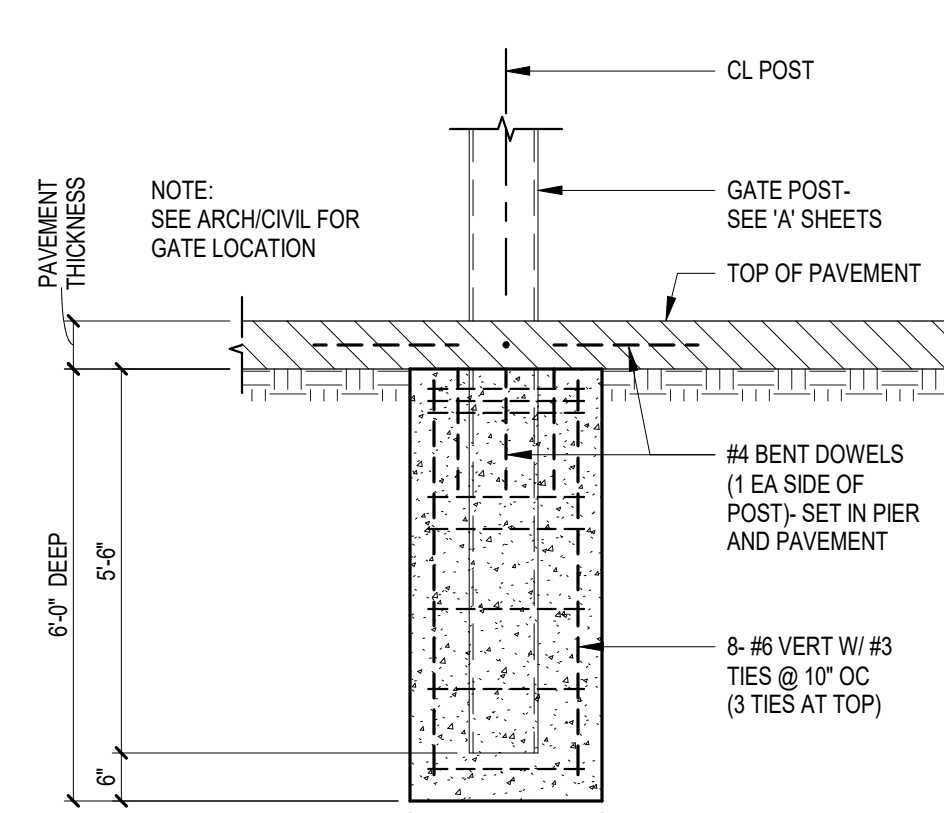
**19 GRADE BEAM STEP DETAIL**  
1/2" = 1'-0"



**20 FENCE POST AT FTG DETAIL**  
1/2" = 1'-0"



**21 COL AT GR BEAM @ INSULATED SLAB**  
1/2" = 1'-0"



**22 GATE POST PIER DETAIL**  
1/2" = 1'-0"