



**BUC-EE'S**

A DEVELOPMENT OF

Buc-ee's Benton, LLC  
Saline County, AR

TEL: (979) 230-2920

**BUC-EE'S TRAVEL CENTER**  
**BENTON, ARKANSAS**  
**74K - L - 2024 - Q2**  
INTERSTATE 30 & STATE HIGHWAY 229  
BENTON, ARKANSAS 72019

**LAWRENCE S. LEVINSON, A.I.A.**

7800 Washington Ave., Suite 600 Houston, TX 77007  
main: 713.600.3600 www.lslarc.com

**HENDERSON**  
ENGINEERS  
8345 LENEKA DRIVE, SUITE 300  
LENEXA, KS 66214  
TEL 913.742.5000 FAX 913.742.5001  
WWW.HENDERSONENGINEERS.COM  
2450001433  
AR CORPORATE NO. 484  
EXPIRES 12/31/2025

ISSUE/REVISION LOG:

No.	DESCRIPTION	DATE
1	Revision 1 - Owner Changes	09/09/2024
3	Revision 3 - Owner Changes	04/23/2025



ISSUED FOR REVIEW: 05/14/2024  
ISSUED FOR BID: 05/14/2024  
ISSUED FOR PERMIT: 05/14/2024

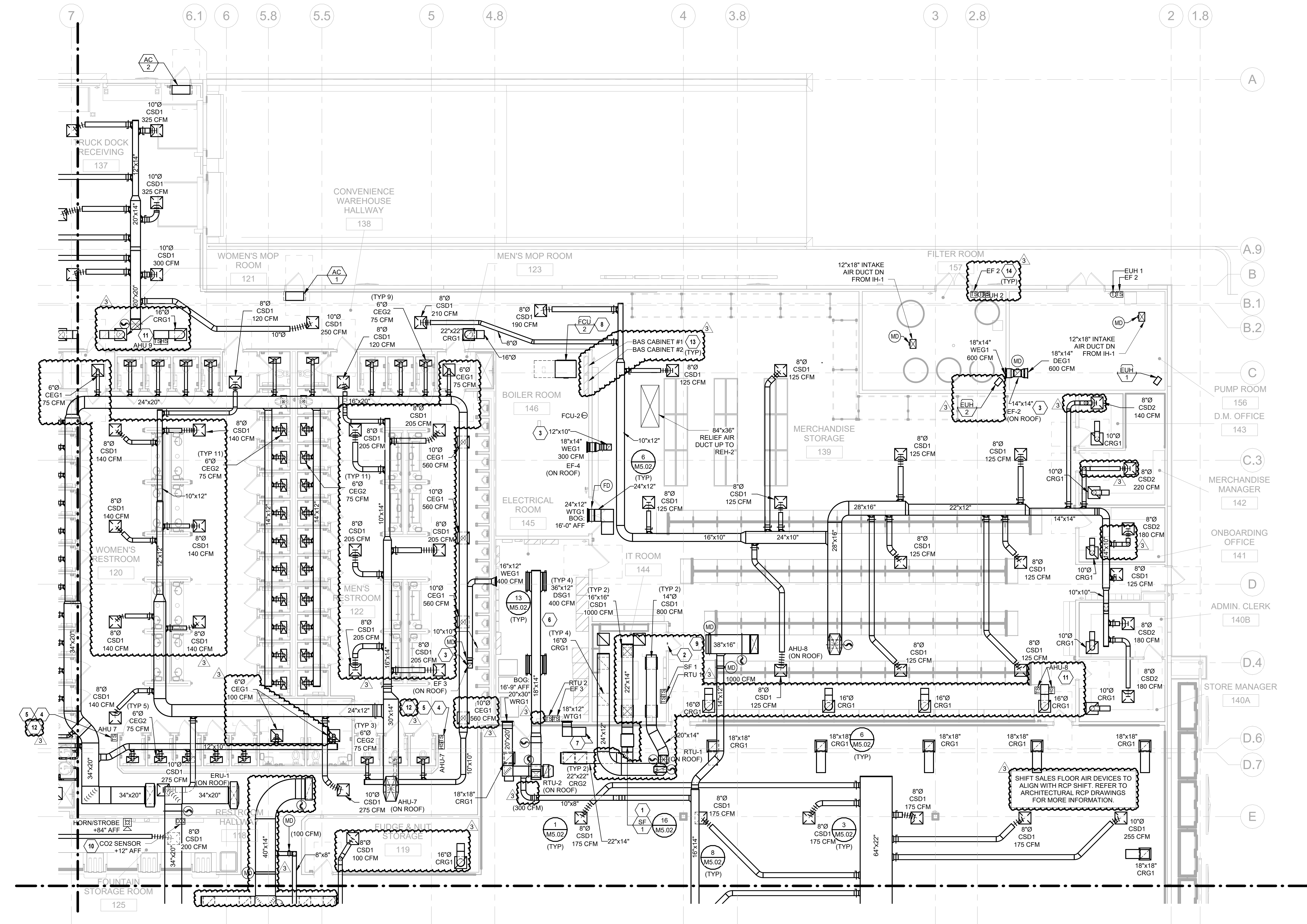
Copyright 2024 Lawrence S. Levinson, AIA. Warning: This document is protected by U.S. Copyright Law Under Section 102 of the U.S. Copyright and the Architectural Works Copyright Protection Act of 1990. Unauthorized reproduction and distribution of this document or any portion of it, other than for use in the particular project, is prohibited and may result in severe civil and criminal penalties, and will be prosecuted to maximum extent possible under the law.

**M1.01**

**MECHANICAL FLOOR PLAN - AREA A**

LSL PROJECT NUMBER: 2024-107.000

**BENTON, ARKANSAS**



1 MECHANICAL FLOOR PLAN - AREA A  
1/8" = 1'-0"

**MECHANICAL PLAN NOTES:**

1. VERIFY SERVICE CLEARANCE WITH EQUIPMENT MANUFACTURER. COORDINATE WITH ALL TRADES NOT TO OBSTRUCT.
2. PROVIDE DOOR CONTACT. REFER TO CONTROLS DRAWING FOR MORE INFORMATION.
3. FULL SIZE EXHAUST AIR DUCTWORK DOWN FROM EXHAUST FAN ON ROOF. PROVIDE TRANSITION TO SIZE INDICATED.
4. CONTRACTOR TO COORDINATE LOCATION OF TEMPERATURE SENSOR WITH ARCHITECT.
5. AVERAGING SENSOR FOR AHU 7 (ONE OF TWO).
6. SPIRAL INSULATED DOUBLE WALL DUCTWORK PAINT AS SPECIFIED BY ARCHITECT.
7. PROVIDE TRANSFER GRILLE IN WALL AS HIGH AS POSSIBLE. ORIENT GRILLE DEFLECTION BARS TOWARD CEILING TO BLOCK VISION INTO PLENUM. TYPICAL FOR ALL TRANSFER GRILLES SHOWN IN WALLS. PROVIDE WIRE MESH SCREEN AT OPEN END OF DUCT.
8. PROVIDE WIRE MESH SCREEN AT INTAKE AND RETURN OF UNIT.
9. COVER RETURN INLET WITH 1/2" GALVANIZED STEEL BIRD SCREEN.
10. CONTRACTOR SHALL PROVIDE A CO2 MONITORING STATION BY LOGICO2 MODEL MK9 DETECTION SET COMPLETE WITH (1) CENTRAL UNIT, (4) SENSORS, (4) REMOTE HORN/STROBES, PLUG-IN POWER SUPPLY, AND ALL REQUIRED CONNECTORS AND CABLES FOR A COMPLETE WORKING SYSTEM. FIELD VERIFY REQUIRED CABLE LENGTH FOR CONNECTION BETWEEN COMPONENTS. REFER TO MANUFACTURER'S INSTALLATION INSTRUCTIONS FOR WORKING DIAGRAM AND OTHER REQUIREMENTS.
11. INSTALL TEMPERATURE SENSOR AND HUMIDITY SENSOR WITHIN RETURN AIR BOOT.
12. MOUNT SENSOR 7'-8" A.F.F.
13. PROPOSED LOCATION OF BAS NETWORK CONTROL PANEL(S) AND HEAD END.
14. PROVIDE INSULATED BACKING FOR THERMOSTATS AND TEMPERATURE SENSORS MOUNTED ON AN EXTERIOR WALL.

**KEY PLAN**

