



BUC-EE'S

A DEVELOPMENT OF

Buc-ee's Benton, LLC
Saline County, AR

TEL: (979) 230-2920

BUC-EE'S TRAVEL CENTER
BENTON, ARKANSAS
74K - L - 2024 - Q2
INTERSTATE 30 & STATE HIGHWAY 229
BENTON, ARKANSAS 72019

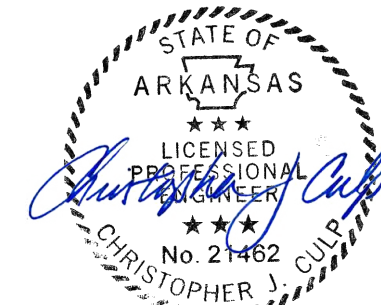
LAWRENCE S. LEVINSON, A.I.A.

7800 Washington Ave., Suite 600 Houston, TX 77007
main: 713.600.3600 www.lslarc.com

HENDERSON
ENGINEERS
8345 LENEXA DRIVE, SUITE 300
LENEXA, KS 66214
TEL 913.742.5000 FAX 913.742.5001
WWW.HENDERSONENGINEERS.COM
2450001433
AR CORPORATE NO. 484
EXPIRES 12/31/2025

ISSUE/REVISION LOG:

No.	DESCRIPTION	DATE
3	Revision 3 - Owner Changes	04/23/2025



4/24/2025

ISSUED FOR REVIEW: 05/14/2024

ISSUED FOR BID: 05/14/2024

ISSUED FOR PERMIT: 05/14/2024

Copyright 2024 Lawrence S. Levinson, AIA. Warning: This document is protected by U.S. Copyright Law Under Section 102 of the U.S. Copyright and the Architectural Works Copyright Protection Act of 1990. Unauthorized reproduction and distribution of this document or any portion of it, other than for use of this particular project, is prohibited and may result in severe civil and criminal penalties, and will be prosecuted to maximum extent possible under the law.

FP1.01

FIRE SPRINKLER FLOOR
PLAN - AREA A

LSL PROJECT NUMBER: 2024-107.000

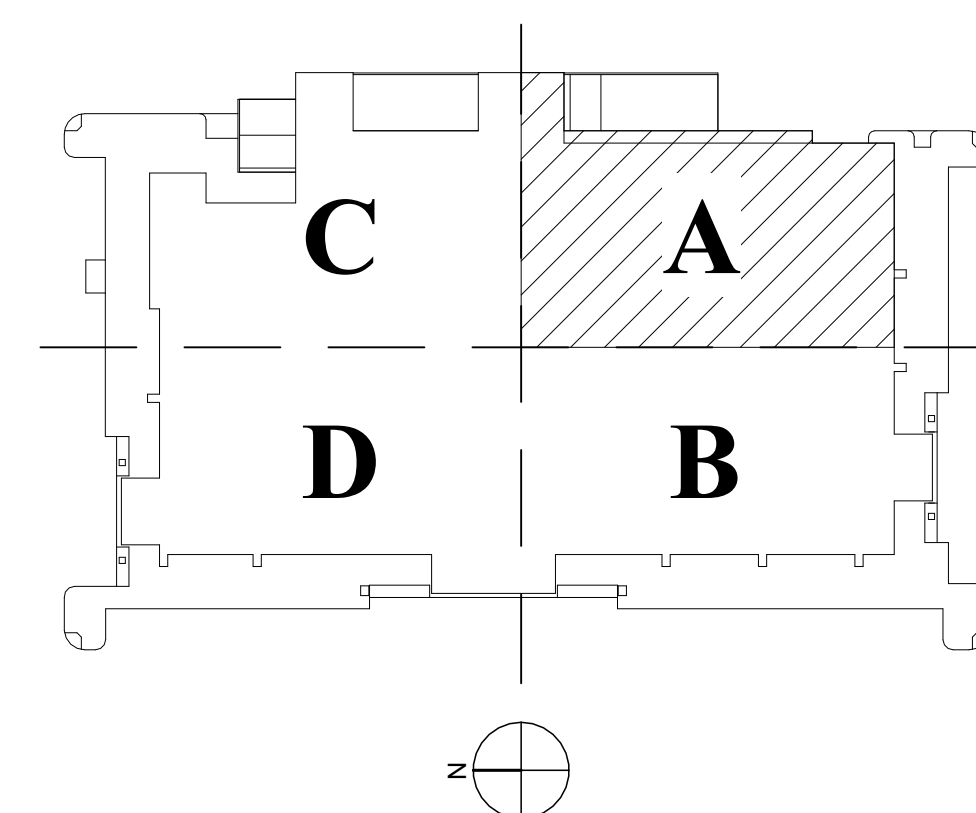
BENTON, ARKANSAS

FIRE SPRINKLER

Key Value	Keynote Text
1	DO NOT ROUTE SPRINKLER PIPING ABOVE ELECTRICAL PANELS AND DISTRIBUTION EQUIPMENT.
2	8-INCH FIRE PROTECTION SERVICE ENTRY. REFER TO CIVIL FOR CONTINUATION.
3	FIRE DEPARTMENT CONNECTION. REFER TO SPECIFICATIONS FOR ADDITIONAL INFORMATION.
4	SPRINKLER PROTECTION NOT REQUIRED FOR NONCOMBUSTIBLE CANOPY PER NFPA 13. NO STORAGE PERMITTED UNDER CANOPY.
5	NONCOMBUSTIBLE, CONCEALED SPACE. SPRINKLER PROTECTION NOT REQUIRED PER NFPA 13.
6	PROVIDE AUTOMATIC AIR RELEASE VALVE AT THE HIGH POINT OF EACH SYSTEM. REFER TO SPECIFICATIONS FOR ADDITIONAL REQUIREMENTS.
7	COORDINATE GRADE BEAM CORE AND OTHER REQUIREMENTS WITH STRUCTURAL ENGINEER.

HYDRAULIC DESIGN	
SYSTEM # 2	MERCHANDISE STORAGE
REMOTE AREA # F	
SPRINKLERS CALCULATED	18 SPRINKLERS
SPRINKLER DENSITY REQ'D	18 SPKRS @ 28 PSI PER FM
AREA OF DISCHARGE	1625 SQ FT - 18 SPKRS PER FM
HOSE ALLOWANCE	500 GPM
SYSTEM FLOW DEMAND AT SRC	1621 GPM
SYSTEM PRESSURE DEMAND AT SRC	105.8 PSI
SYSTEM SAFETY FACTOR	12.2 PSI
HOSE ALLOWANCE NOT INCLUDED IN FLOW DEMAND	

KEY PLAN



1 FIRE SPRINKLER FLOOR PLAN - AREA A
1/8" = 1'-0"

