

FIRE ALARM KEYED NOTES	
Key Value	Keynote Text
1	PROVIDE FIRE DEPARTMENT KEY BOX FOR FIRE DEPARTMENT ACCESS. PROVIDE EQUIPMENT AND CONNECTIONS NECESSARY TO MONITOR KEY BOX. INTERNAL SUPERVISORY SWITCHES), AS REQUIRED. LOCATION TO BE COORDINATED WITH AHJ AND ARCHITECT PRIOR TO INSTALLATION.
2	PROVIDE DUCT MOUNTED SMOKE DETECTOR FOR FAN POWERED MECHANICAL AIR HANDLING EQUIPMENT SHUTDOWN. INSTALL DETECTOR PER MANUFACTURER'S RECOMMENDATIONS. REFER TO MECHANICAL SHEETS FOR EQUIPMENT AND DUCTWORK LAYOUT AND DETAILS.
3	PROVIDE LOW VOLTAGE WIRING FROM DUCT DETECTOR TO REMOTE TEST STATION. MOUNT REMOTE TEST STATION IN CEILING.
4	PROVIDE FIRE ALARM EQUIPMENT SUITABLE FOR ENVIRONMENTAL CONDITIONS.



BUC-EE'S

A DEVELOPMENT OF

Buc-ee's Benton, LLC
Saline County, AR

TEL: (979) 230-2920

BUC-EE'S TRAVEL CENTER
BENTON, ARKANSAS
74K - L - 2024 - Q2
INTERSTATE 30 & STATE HIGHWAY 229
BENTON, ARKANSAS 72019

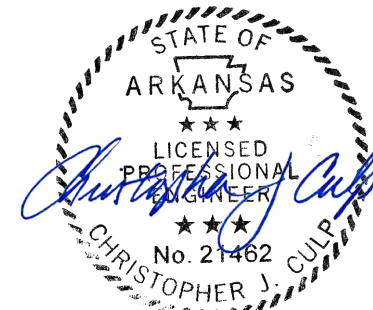
LAWRENCE S. LEVINSON, A.I.A.

7800 Washington Ave., Suite 600 Houston, TX 77007
main: 713.600.3600 www.lslarc.com

HENDERSON
ENGINEERS
8345 LENEXA DRIVE, SUITE 300
LENEXA, KS 66214
TEL 913.742.5000 FAX 913.742.5001
WWW.HENDERSONENGINEERS.COM
2450001433
AR CORPORATE NO. 484
EXPIRES 12/31/2025

ISSUE/REVISION LOG:

No.	DESCRIPTION	DATE
3	Revision 3 - Owner Changes	04/23/2025



ISSUED FOR REVIEW:	05/14/2024
ISSUED FOR BID:	05/14/2024
ISSUED FOR PERMIT:	05/14/2024

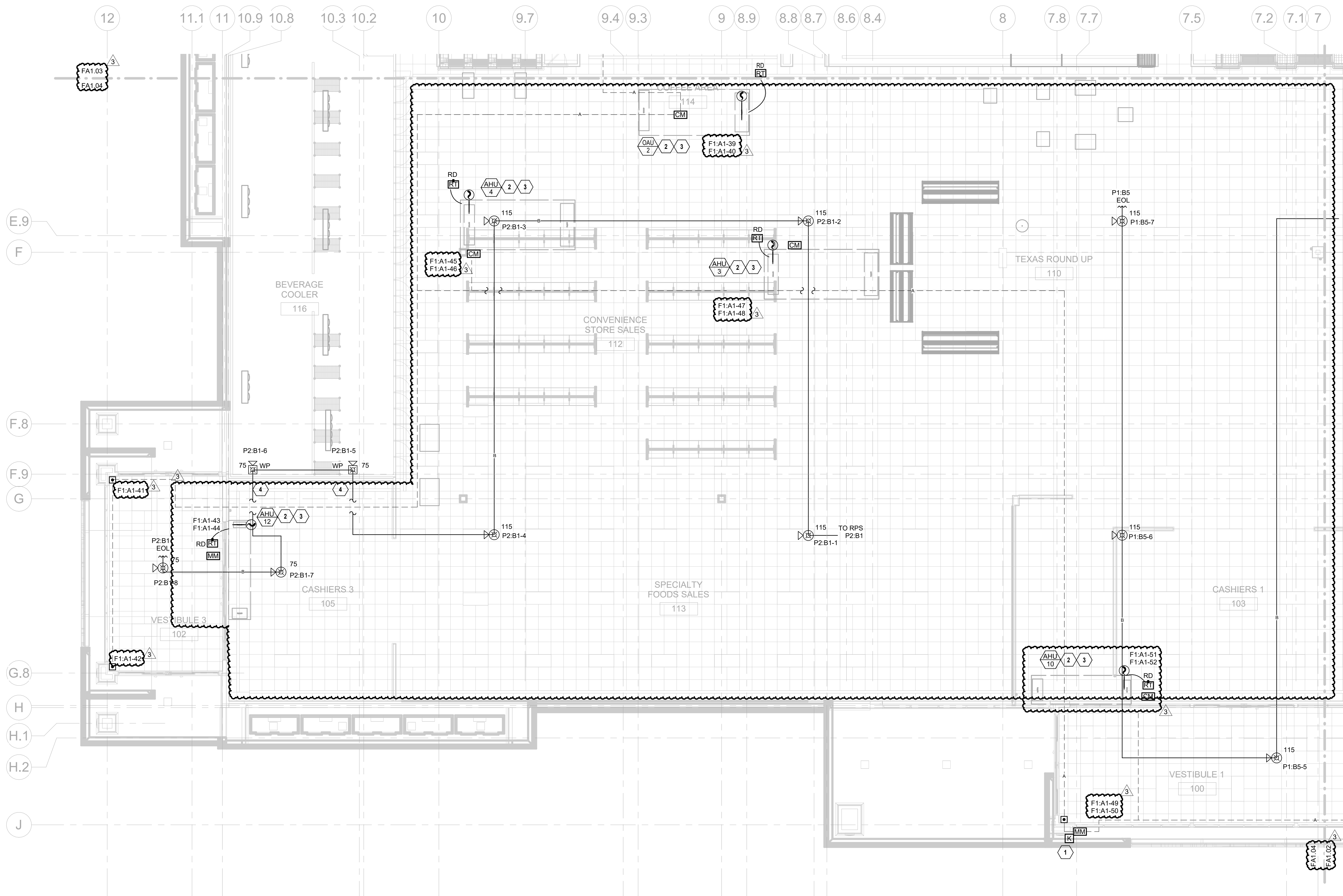
Copyright 2024 Lawrence S. Levinson, AIA. Warning: This document is protected by U.S. Copyright Law Under Section 102 of the U.S. Copyright and the Architectural Works Copyright Protection Act of 1990. Unauthorized reproduction and distribution of this document or any portion of it, other than for use of this particular project, is prohibited and may result in severe civil and criminal penalties, and will be prosecuted to maximum extent possible under the law.

FA1.04

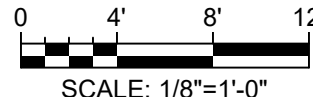
FIRE ALARM FLOOR PLAN - AREA D

LSL PROJECT NUMBER: 2024-107.000

BENTON, ARKANSAS



① FIRE ALARM FLOOR PLAN - AREA B
1/8" = 1'-0"



KEY PLAN

