



BUC-EE'S

A DEVELOPMENT OF

Buc-ee's Benton, LLC
Saline County, AR

TEL: (979) 230-2920

BUC-EE'S TRAVEL CENTER

BENTON, ARKANSAS

74K - L - 2024 - Q2

**INTERSTATE 30 & STATE HIGHWAY 229
BENTON, ARKANSAS 72019**

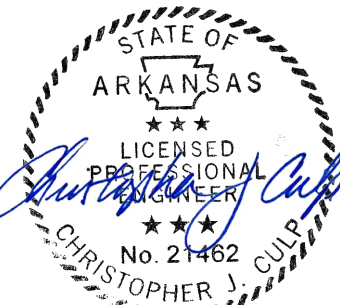
**LAWRENCE S.
LEVINSON, A.I.A.**

7800 Washington Ave., Suite 600 Houston, TX 77007
main: 713.600.3600 www.laarc.com

**HENDERSON
ENGINEERS**
8345 LENEXA DRIVE, SUITE 300
LENEXA, KS 66214
TEL 913.742.5000 FAX 913.742.5001
WWW.HENDERSONENGINEERS.COM
2450001433
AR CORPORATE NO. 484
EXPIRES 12/31/2025

ISSUE/REVISION LOG:

No.	DESCRIPTION	DATE
3	Revision 3 - Owner Changes	04/23/2025



4/24/2025

ISSUED FOR REVIEW: 05/14/2024

ISSUED FOR BID: 05/14/2024

ISSUED FOR PERMIT: 05/14/2024

Copyright 2024 Lawrence S. Levinson, AIA. Warning: This document is protected by U.S. Copyright Law Under Section 102 of the U.S. Copyright and the Architectural Works Copyright Protection Act of 1990. Unauthorized reproduction and distribution of this document or any portion of it, other than for use in the particular project, is prohibited and may result in severe civil and criminal penalties, and will be prosecuted to maximum extent possible under the law.

FA0.00

**FIRE ALARM GENERAL
NOTES AND LEGEND**

LSL PROJECT NUMBER: 2024-107.000

BENTON, ARKANSAS

FIRE ALARM SYMBOLS

THIS IS A MASTER LEGEND AND NOT ALL SYMBOLS OR ABBREVIATIONS ARE USED. V2.02

ABBREVIATIONS		FIRE ALARM	
AFF	ABOVE FINISHED FLOOR	NIC	NOT IN CONTRACT
AFG	ABOVE FINISHED GRADE	OC	ON CENTER
CD	CANDELA	PIV	POST INDICATOR VALVE
ESFR	EARLY SUPPRESSION FAST RESPONSE	PRV	PROVIDE FURNISH AND INSTALL PRESSURE REDUCING VALVE
ETR	EXISTING TO REMAIN	RD	RETURN DUCT
FHC	FIRE HOSE CABINET	REV	REVISION
FP	FIRE PROTECTION	SD	SUPPLY DUCT
GC	CONTRACTOR	SF	SQUARE FEET
GPM	GALLONS PER MINUTE	TYP	TYPICAL
JBI-JBOX	JUNCTION BOX	UNO	UNLESS NOTES OTHERWISE
MAX	MAXIMUM	V	VOLT(S)
MIN	MINIMUM	W	WATTS
N/A	NOT APPLICABLE	WP	WEATHERPROOF
ANNOTATION		FACP	FIRE ALARM CONTROL PANEL/UNIT
①	FIRE PROTECTION PLAN NOTE CALLOUT	FACP	RECESSED FIRE ALARM CONTROL PANEL/UNIT
●	CONNECTION POINT OF NEW WORK TO EXISTING	FACP	FIRE ALARM ANNUNCIATOR PANEL
① F1	DETAIL REFERENCE UPPER NUMBER INDICATES DETAIL NUMBER LOWER NUMBER INDICATES SHEET NUMBER	FACP	RECESSED FIRE ALARM ANNUNCIATOR PANEL
① F1	SECTION CUT DESIGNATION	AMP	AMPLIFIER PANEL
⊠	DEDICATED EQUIPMENT ACCESS TILE	RPS	REMOTE POWER SUPPLY
☑	ACCESS PANEL	RT	REMOTE TEST STATION WITH INDICATING LIGHT
STANDARD MOUNTING HEIGHTS		RL	REMOTE INDICATING LIGHT
AUDIBLE APPLIANCE (TOP OF APPLIANCE)	90"	PS	PRESSURE SWITCH LOW/HIGH
FIRE ALARM ANNUNCIATOR PANEL (TOP OF DISPLAY)	60"	FS	WATERFLOW ALARM SWITCH
FIRE ALARM BELL (EXTERIOR) (CENTERLINE)	120"	VT	CONTROL VALVE TAMPER SWITCH
FIRE ALARM CONTROL PANEL/UNIT (TOP OF DISPLAY)	60"	DH	MAGNETIC DOOR HOLD OPEN DEVICE
PULL STATION (TOP OF DEVICE)	48"	CM	CONTROL MODULE
VISIBLE APPLIANCE (CENTERLINE)	84"	MM	MONITOR MODULE
INSTALL DEVICES AT THE MOUNTING HEIGHTS SHOWN ABOVE UNO IN THE CONSTRUCTION DOCUMENTS. MOUNTING HEIGHTS LISTED ABOVE, OR ELSEWHERE IN THE CONSTRUCTION DOCUMENTS, ARE AFF OR AFG. UNO. ALL DEVICES SHALL BE INSTALLED IN COMPLIANCE WITH CURRENT ADA AND LOCAL REQUIREMENTS.		K	FIRE DEPARTMENT KEY BOX
CIRCUIT SCHEDULE / WIRING LEGEND		□	PULL STATION
JUT	CIRCUIT ORIGINATION	▼	FIREFIGHTER'S PHONE JACK
ORIGIN	CIRCUIT DESCRIPTION	①	HEAT DETECTOR (E INDICATES ELEVATOR RECALL)
	CIRCUIT CLASS	①	SMOKE DETECTOR (E INDICATES ELEVATOR RECALL)
FACP	ONE #16/2 AWG FPLP CABLE - BELDEN 6220FK OR EQUIVALENT FOR SIGNALING LINE CIRCUIT	①	SINGLE STATION SMOKE DETECTOR
FACP/RPS#1/RPS#2	ONE #14/2 AWG FPLP CABLE - BELDEN 6120UJ OR EQUIVALENT FOR NOTIFICATION APPLIANCE CIRCUIT	①②	PROJECTED BEAM SMOKE DETECTOR
FACP	ONE #14/2 AWG FPLP CABLE - BELDEN 6120UJ OR EQUIVALENT FOR INITIATING DEVICE CIRCUIT	RD	DUCT MOUNTED SMOKE DETECTOR (SD=SUPPLY/RD=RETURN)
FACP	ONE #16/2 AWG FPLP CABLE - BELDEN 6220FK OR EQUIVALENT FOR FIRE ALARM ANNUNCIATOR PANEL	CO	CARBON MONOXIDE DETECTOR
		☎	AREA OF REFUGE 2-WAY COMMUNICATION SYSTEM
		F	WALL MOUNTED AUDIBLE NOTIFICATION APPLIANCE
		#	#W INDICATES WATTAGE (VOICE EVACUATION SYSTEMS ONLY)
		#	#W INDICATES WATTAGE (VOICE EVACUATION SYSTEMS ONLY)
		#	#W INDICATES WATTAGE (VOICE EVACUATION SYSTEMS ONLY)
		#	#W INDICATES WATTAGE (VOICE EVACUATION SYSTEMS ONLY)
		#	#W INDICATES WATTAGE (VOICE EVACUATION SYSTEMS ONLY)
		#	#W INDICATES WATTAGE (VOICE EVACUATION SYSTEMS ONLY)
		#	#W INDICATES WATTAGE (VOICE EVACUATION SYSTEMS ONLY)
		#	#W INDICATES WATTAGE (VOICE EVACUATION SYSTEMS ONLY)
		#	#W INDICATES WATTAGE (VOICE EVACUATION SYSTEMS ONLY)
		#	#W INDICATES WATTAGE (VOICE EVACUATION SYSTEMS ONLY)
		#	#W INDICATES WATTAGE (VOICE EVACUATION SYSTEMS ONLY)
		#	#W INDICATES WATTAGE (VOICE EVACUATION SYSTEMS ONLY)
		#	#W INDICATES WATTAGE (VOICE EVACUATION SYSTEMS ONLY)
		#	#W INDICATES WATTAGE (VOICE EVACUATION SYSTEMS ONLY)
		#	#W INDICATES WATTAGE (VOICE EVACUATION SYSTEMS ONLY)
		#	#W INDICATES WATTAGE (VOICE EVACUATION SYSTEMS ONLY)
		#	#W INDICATES WATTAGE (VOICE EVACUATION SYSTEMS ONLY)
		#	#W INDICATES WATTAGE (VOICE EVACUATION SYSTEMS ONLY)
		#	#W INDICATES WATTAGE (VOICE EVACUATION SYSTEMS ONLY)
		#	#W INDICATES WATTAGE (VOICE EVACUATION SYSTEMS ONLY)
		#	#W INDICATES WATTAGE (VOICE EVACUATION SYSTEMS ONLY)
		#	#W INDICATES WATTAGE (VOICE EVACUATION SYSTEMS ONLY)
		#	#W INDICATES WATTAGE (VOICE EVACUATION SYSTEMS ONLY)
		#	#W INDICATES WATTAGE (VOICE EVACUATION SYSTEMS ONLY)
		#	#W INDICATES WATTAGE (VOICE EVACUATION SYSTEMS ONLY)
		#	#W INDICATES WATTAGE (VOICE EVACUATION SYSTEMS ONLY)
		#	#W INDICATES WATTAGE (VOICE EVACUATION SYSTEMS ONLY)
		#	#W INDICATES WATTAGE (VOICE EVACUATION SYSTEMS ONLY)
		#	#W INDICATES WATTAGE (VOICE EVACUATION SYSTEMS ONLY)
		#	#W INDICATES WATTAGE (VOICE EVACUATION SYSTEMS ONLY)
		#	#W INDICATES WATTAGE (VOICE EVACUATION SYSTEMS ONLY)
		#	#W INDICATES WATTAGE (VOICE EVACUATION SYSTEMS ONLY)
		#	#W INDICATES WATTAGE (VOICE EVACUATION SYSTEMS ONLY)
		#	#W INDICATES WATTAGE (VOICE EVACUATION SYSTEMS ONLY)
		#	#W INDICATES WATTAGE (VOICE EVACUATION SYSTEMS ONLY)
		#	#W INDICATES WATTAGE (VOICE EVACUATION SYSTEMS ONLY)
		#	#W INDICATES WATTAGE (VOICE EVACUATION SYSTEMS ONLY)
		#	#W INDICATES WATTAGE (VOICE EVACUATION SYSTEMS ONLY)
		#	#W INDICATES WATTAGE (VOICE EVACUATION SYSTEMS ONLY)
		#	#W INDICATES WATTAGE (VOICE EVACUATION SYSTEMS ONLY)
		#	#W INDICATES WATTAGE (VOICE EVACUATION SYSTEMS ONLY)
		#	#W INDICATES WATTAGE (VOICE EVACUATION SYSTEMS ONLY)
		#	#W INDICATES WATTAGE (VOICE EVACUATION SYSTEMS ONLY)
		#	#W INDICATES WATTAGE (VOICE EVACUATION SYSTEMS ONLY)
		#	#W INDICATES WATTAGE (VOICE EVACUATION SYSTEMS ONLY)
		#	#W INDICATES WATTAGE (VOICE EVACUATION SYSTEMS ONLY)
		#	#W INDICATES WATTAGE (VOICE EVACUATION SYSTEMS ONLY)
		#	#W INDICATES WATTAGE (VOICE EVACUATION SYSTEMS ONLY)
		#	#W INDICATES WATTAGE (VOICE EVACUATION SYSTEMS ONLY)
		#	#W INDICATES WATTAGE (VOICE EVACUATION SYSTEMS ONLY)
		#	#W INDICATES WATTAGE (VOICE EVACUATION SYSTEMS ONLY)
		#	#W INDICATES WATTAGE (VOICE EVACUATION SYSTEMS ONLY)
		#	#W INDICATES WATTAGE (VOICE EVACUATION SYSTEMS ONLY)
		#	#W INDICATES WATTAGE (VOICE EVACUATION SYSTEMS ONLY)
		#	#W INDICATES WATTAGE (VOICE EVACUATION SYSTEMS ONLY)
		#	#W INDICATES WATTAGE (VOICE EVACUATION SYSTEMS ONLY)
		#	#W INDICATES WATTAGE (VOICE EVACUATION SYSTEMS ONLY)
		#	#W INDICATES WATTAGE (VOICE EVACUATION SYSTEMS ONLY)
		#	#W INDICATES WATTAGE (VOICE EVACUATION SYSTEMS ONLY)
		#	#W INDICATES WATTAGE (VOICE EVACUATION SYSTEMS ONLY)
		#	#W INDICATES WATTAGE (VOICE EVACUATION SYSTEMS ONLY)
		#	#W INDICATES WATTAGE (VOICE EVACUATION SYSTEMS ONLY)
		#	#W INDICATES WATTAGE (VOICE EVACUATION SYSTEMS ONLY)
		#	#W INDICATES WATTAGE (VOICE EVACUATION SYSTEMS ONLY)
		#	#W INDICATES WATTAGE (VOICE EVACUATION SYSTEMS ONLY)
		#	#W INDICATES WATTAGE (VOICE EVACUATION SYSTEMS ONLY)
		#	#W INDICATES WATTAGE (VOICE EVACUATION SYSTEMS ONLY)
		#	#W INDICATES WATTAGE (VOICE EVACUATION SYSTEMS ONLY)
		#	#W INDICATES WATTAGE (VOICE EVACUATION SYSTEMS ONLY)
		#	#W INDICATES WATTAGE (VOICE EVACUATION SYSTEMS ONLY)
		#	#W INDICATES WATTAGE (VOICE EVACUATION SYSTEMS ONLY)
		#	#W INDICATES WATTAGE (VOICE EVACUATION SYSTEMS ONLY)
		#	#W INDICATES WATTAGE (VOICE EVACUATION SYSTEMS ONLY)
		#	#W INDICATES WATTAGE (VOICE EVACUATION SYSTEMS ONLY)
		#	#W INDICATES WATTAGE (VOICE EVACUATION SYSTEMS ONLY)
		#	#W INDICATES WATTAGE (VOICE EVACUATION SYSTEMS ONLY)
		#	#W INDICATES WATTAGE (VOICE EVACUATION SYSTEMS ONLY)
		#	#W INDICATES WATTAGE (VOICE EVACUATION SYSTEMS ONLY)
		#	#W INDICATES WATTAGE (VOICE EVACUATION SYSTEMS ONLY)
		#	#W INDICATES WATTAGE (VOICE EVACUATION SYSTEMS ONLY)
		#	#W INDICATES WATTAGE (VOICE EVACUATION SYSTEMS ONLY)
		#	#W INDICATES WATTAGE (VOICE EVACUATION SYSTEMS ONLY)
		#	#W INDICATES WATTAGE (VOICE EVACUATION SYSTEMS ONLY)
		#	#W INDICATES WATTAGE (VOICE EVACUATION SYSTEMS ONLY)
		#	#W INDICATES WATTAGE (VOICE EVACUATION SYSTEMS ONLY)
		#	#W INDICATES WATTAGE (VOICE EVACUATION SYSTEMS ONLY)
		#	#W INDICATES WATTAGE (VOICE EVACUATION SYSTEMS ONLY)
		#	#W INDICATES WATTAGE (VOICE EVACUATION SYSTEMS ONLY)
		#	#W INDICATES WATTAGE (VOICE EVACUATION SYSTEMS ONLY)
		#	#W INDICATES WATTAGE (VOICE EVACUATION SYSTEMS ONLY)
		#	#W INDICATES WATTAGE (VOICE EVACUATION SYSTEMS ONLY)
		#	#W INDICATES WATTAGE (VOICE EVACUATION SYSTEMS ONLY)
		#	#W INDICATES WATTAGE (VOICE EVACUATION SYSTEMS ONLY)
		#	#W INDICATES WATTAGE (VOICE EVACUATION SYSTEMS ONLY)
		#	#W INDICATES WATTAGE (VOICE EVACUATION SYSTEMS ONLY)
		#	#W INDICATES WATTAGE (VOICE EVACUATION SYSTEMS ONLY)
		#	#W INDICATES WATTAGE (VOICE EVACUATION SYSTEMS ONLY)
		#	#W INDICATES WATTAGE (VOICE EVACUATION SYSTEMS ONLY)
		#	#W INDICATES WATTAGE (VOICE EVACUATION SYSTEMS ONLY)
		#	#W INDICATES WATTAGE (VOICE EVACUATION SYSTEMS ONLY)
		#	#W INDICATES WATTAGE (VOICE EVACUATION SYSTEMS ONLY)
		#	#W INDICATES WATTAGE (VOICE EVACUATION SYSTEMS ONLY)
		#	#W INDICATES WATTAGE (VOICE EVACUATION SYSTEMS ONLY)
		#	#W INDICATES WATTAGE (VOICE EVACUATION SYSTEMS ONLY)
		#	#W INDICATES WATTAGE (VOICE EVACUATION SYSTEMS ONLY)
		#	#W INDICATES WATTAGE (VOICE EVACUATION SYSTEMS ONLY)
		#	#W INDICATES WATTAGE (VOICE EVACUATION SYSTEMS ONLY)
		#	#W INDICATES WATTAGE (VOICE EVACUATION SYSTEMS ONLY)
		#	#W INDICATES WATTAGE (VOICE EVACUATION SYSTEMS ONLY)
		#	#W INDICATES WATTAGE (VOICE EVACUATION SYSTEMS ONLY)
		#	#W INDICATES WATTAGE (VOICE EVACUATION SYSTEMS ONLY)
		#	#W INDICATES WATTAGE (VOICE EVACUATION SYSTEMS ONLY)
		#	#W INDICATES WATTAGE (VOICE EVACUATION SYSTEMS ONLY)
		#	#W INDICATES WATTAGE (VOICE EVACUATION SYSTEMS ONLY)
		#	#W INDICATES WATTAGE (VOICE EVACUATION SYSTEMS ONLY)
		#	#W INDICATES WATTAGE (VOICE EVACUATION SYSTEMS ONLY)
		#	#W INDICATES WATTAGE (VOICE EVACUATION SYSTEMS ONLY)
		#	#W INDICATES WATTAGE (VOICE EVACUATION SYSTEMS ONLY)
		#	#W INDICATES WATTAGE (VOICE EVACUATION SYSTEMS ONLY)
		#	#W INDICATES WATTAGE (VOICE EVACUATION SYSTEMS ONLY)

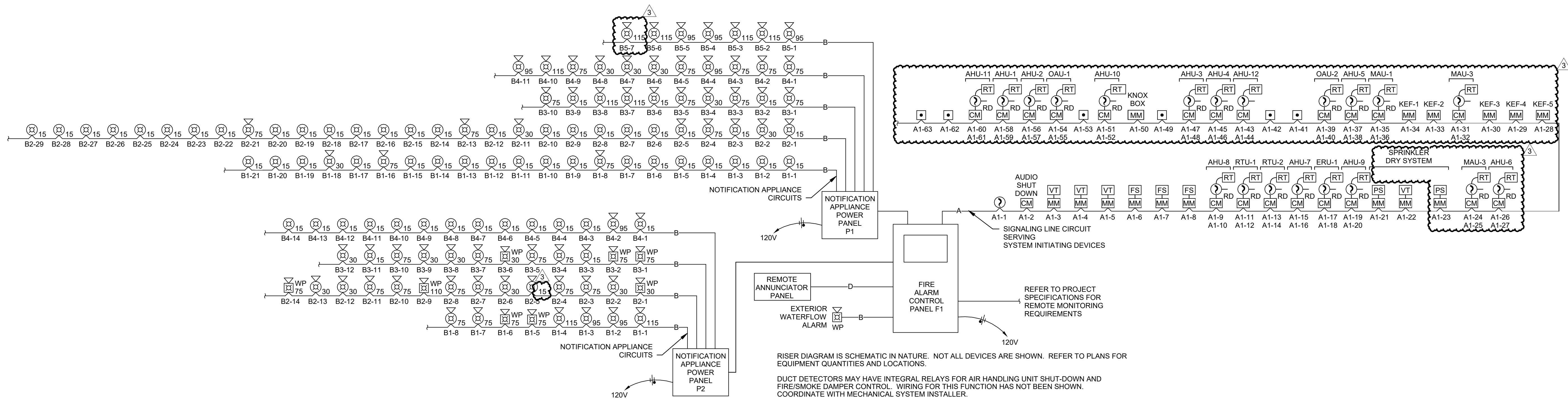
SYSTEM INPUTS	SYSTEM OUTPUTS									
	ALARM	SUPERVISORY	TRouble	REPORT TO FIRE ALARM CONTROL PANEL	SIGNAL SUPERVISING STATION	ACTIVATE GENERAL FIRE ALARM	ACTIVATE FIRE ALARM AUDIBLE/VISIBLE NOTIFICATION APPLIANCES	SHUTDOWN INDIVIDUAL FAN POWERED MECHANICAL AIR HANDLING EQUIPMENT AND DAMPERS	SHUTDOWN ALL FAN POWERED MECHANICAL AIR HANDLING EQUIPMENT FOR EFFECTED FAN SYSTEM	SHUTDOWN TERTIARY AUDIO / VIDEO SYSTEMS IN COMMON AREAS
SIGNALING LINE OR NOTIFICATION APPLIANCE CIRCUIT - OPEN	•	•	•	•	•	•	•	•	•	•
SIGNALING LINE OR NOTIFICATION APPLIANCE CIRCUIT - SHORT	•	•	•	•	•	•	•	•	•	•
SIGNALING LINE OR NOTIFICATION APPLIANCE CIRCUIT - GROUND	•	•	•	•	•	•	•	•	•	•
FIRE ALARM CONTROL PANEL LOSS OF POWER	•	•	•	•	•	•	•	•	•	•
MANUAL PULL STATION	•	•	•	•	•	•	•	•	•	•
SMOKE DETECTOR - SPOT TYPE	•	•	•	•	•	•	•	•	•	•
SMOKE DETECTOR - DUCT MOUNTED	•	•	•	•	•	•	•	•	•	•
WATERFLOW ALARM SWITCH	•	•	•	•	•	•	•	•	•	•
VALVE TAMPER SWITCH	•	•	•	•	•	•	•	•	•	•
KITCHEN HOOD SUPPRESSION SYSTEM	•	•	•	•	•	•	•	•	•	•
FIRE DEPARTMENT KEY BOX VALVE TAMPER SWITCH	•	•	•	•	•	•	•	•	•	•
LOW/HIGH AIR PRESSURE SYSTEM	•	•	•	•	•	•	•	•	•	•

EXISTING SEQUENCE OF OPERATION TO REMAIN. REFER HERE WHERE GUIDANCE IS NEEDED.

CONTRACTOR TO PROVIDE ALL NECESSARY EQUIPMENT AND CONNECTIONS REQUIRED TO ACCOMPLISH THE FUNCTIONS INDICATED, AT MINIMUM.

SEQUENCE OF OPERATIONS INDICATED IS SCHEMATIC. MODIFY TO SUIT CONDITIONS AND MEET APPLICABLE CODE REQUIREMENTS.

② FIRE ALARM SEQUENCE OF OPERATIONS NTS



① FIRE ALARM RISER DIAGRAM - ADDRESSABLE SYSTEM (NON-VOICE) NTS

