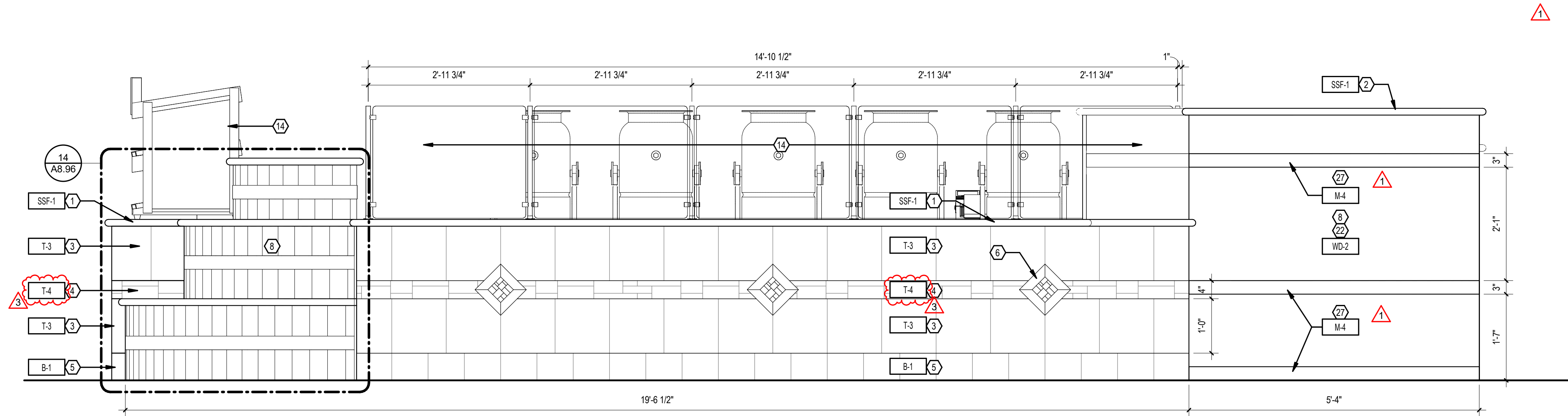
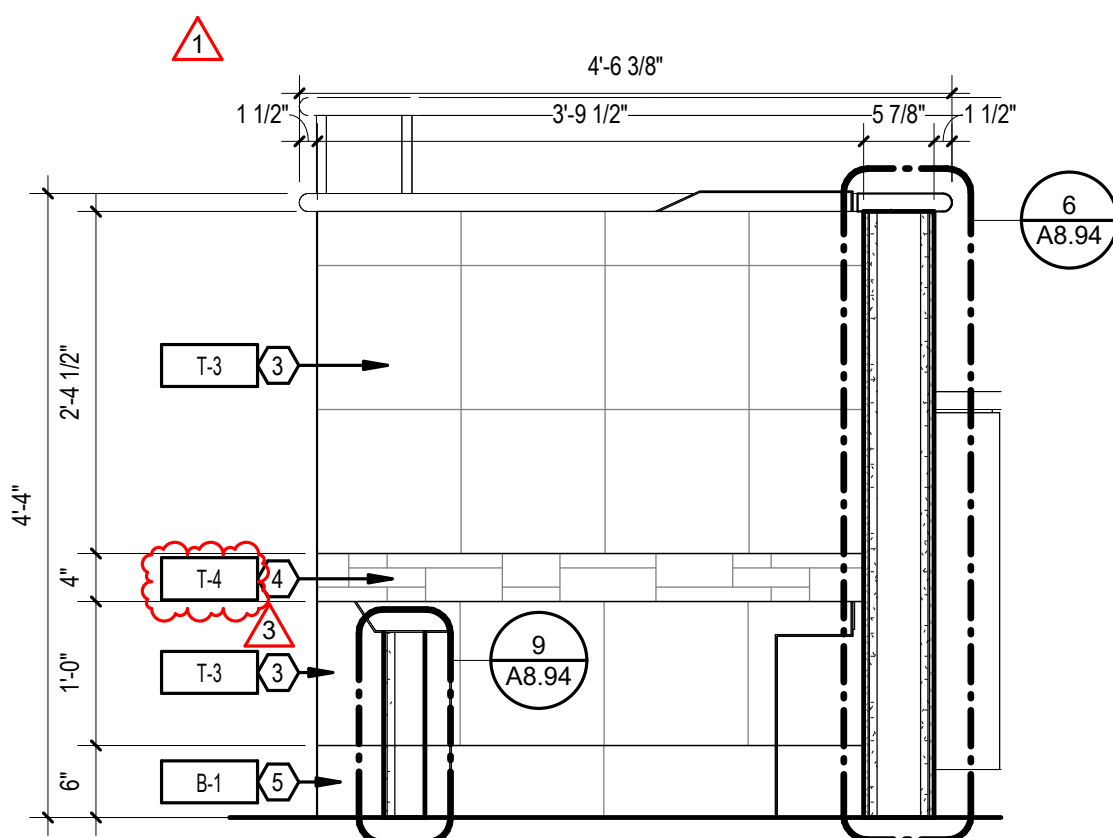


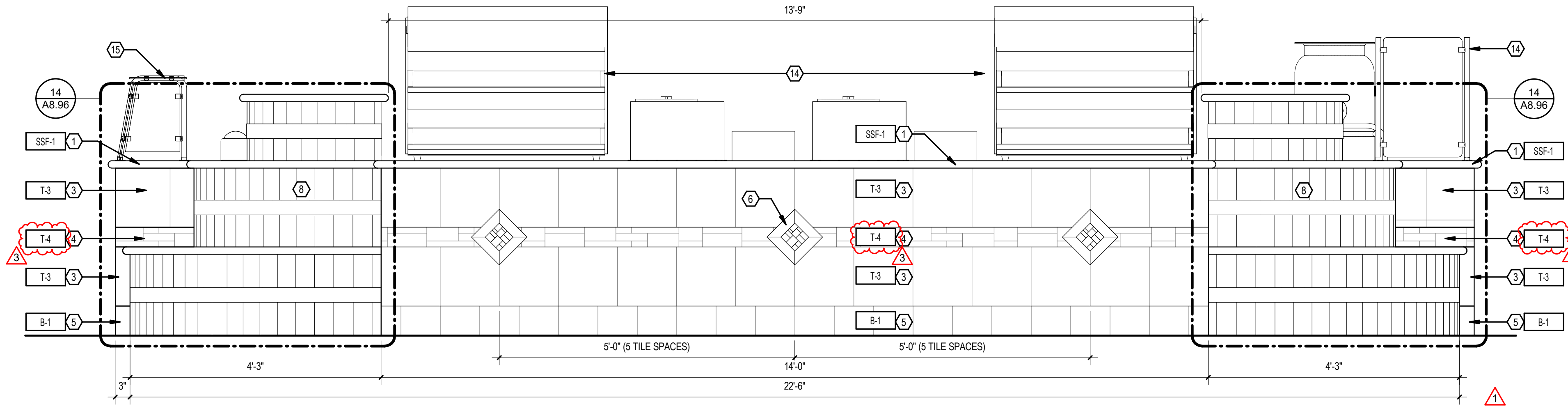
Autodesk Docs://74-Buc-ee's Benton-AR (L) 2023/06\_BENTON AR\_TRU-FUDGE\_(L)\_.rvt



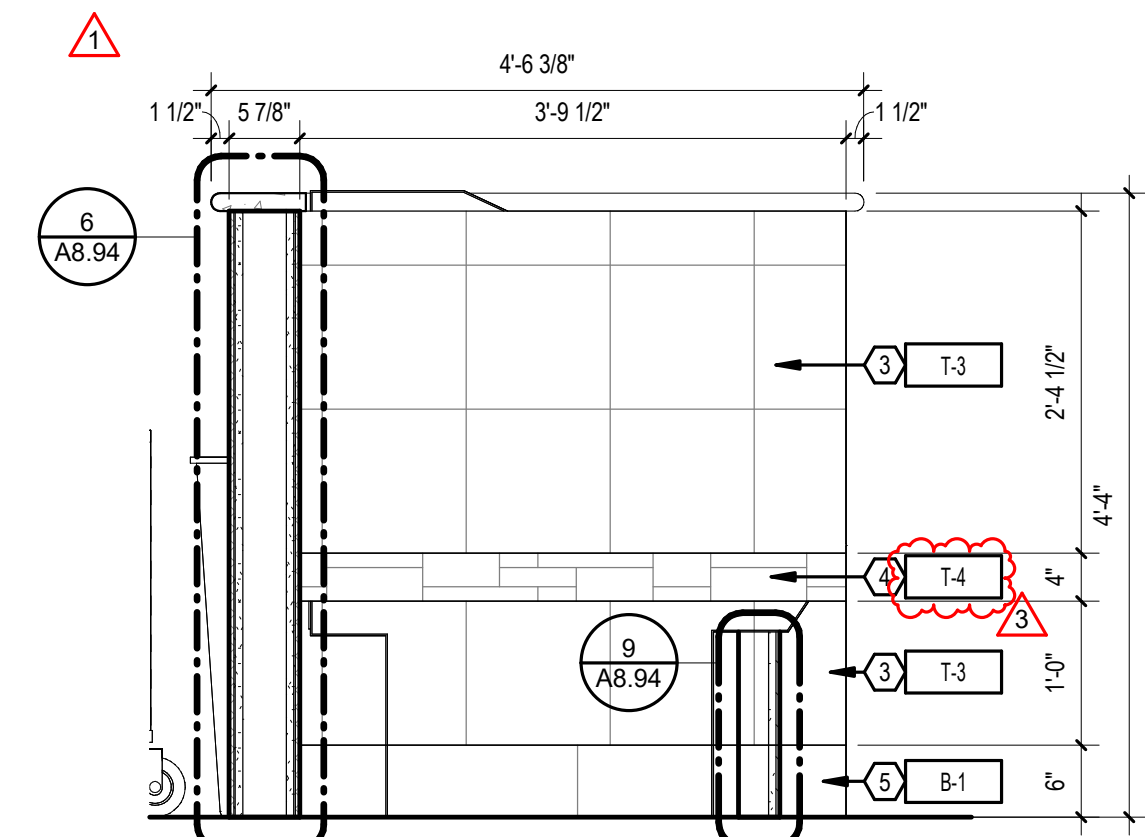
4 SWEET STREET - ELEVATION 3/4" = 1'-0"



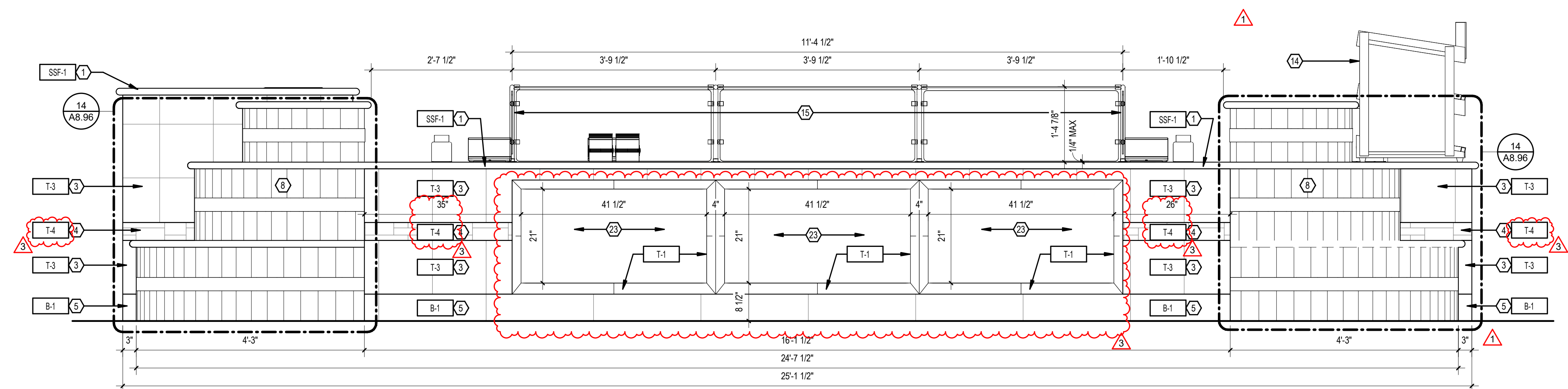
7 SWEET STREET - ELEVATION 3/4" = 1'-0"



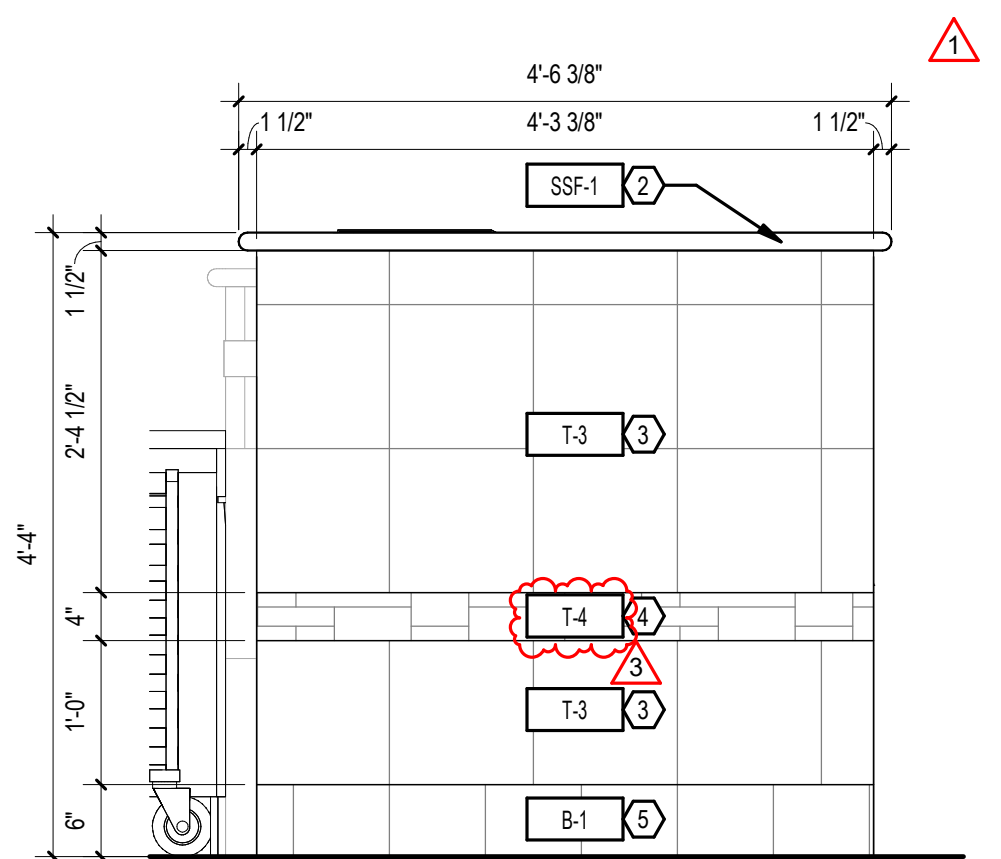
3 SWEET STREET - ELEVATION 3/4" = 1'-0"



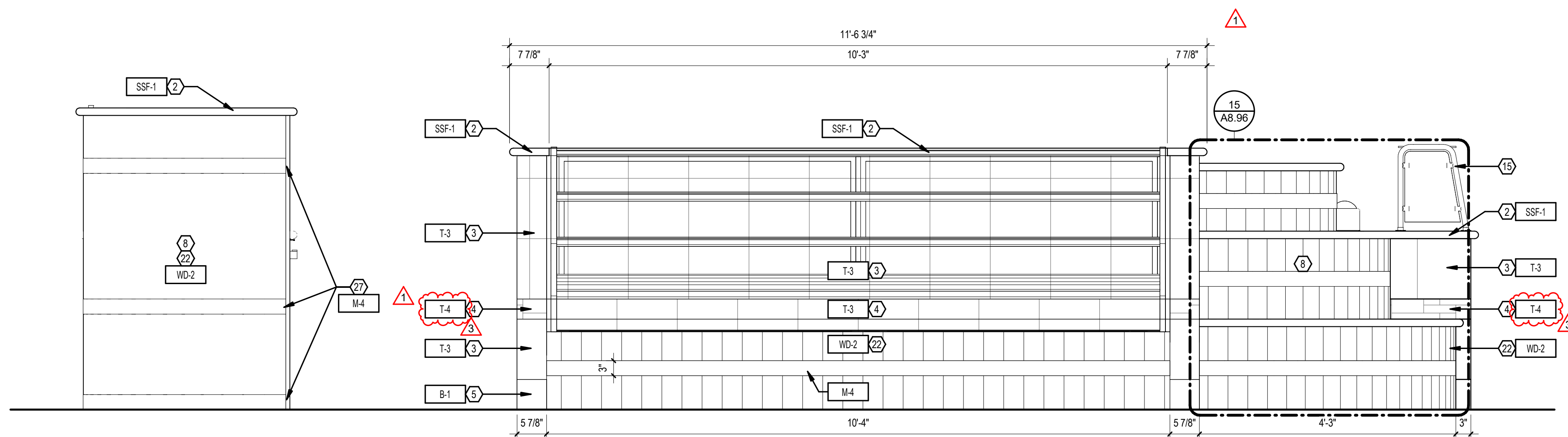
6 SWEET STREET - ELEVATION 3/4" = 1'-0"



2 SWEET STREET - ELEVATION 3/4" = 1'-0"



5 SWEET STREET - ELEVATION 3/4" = 1'-0"



1 SWEET STREET - ELEVATION 3/4" = 1'-0"

## T.R.U./SWEET ST. GENERAL NOTES

- THE CONTRACTOR & SUB-CONTRACTORS SHALL VERIFY ALL EXISTING CONDITIONS PRIOR TO PERFORMING ANY WORK & SHALL NOTIFY THE ARCHITECT IMMEDIATELY OF ANY CONDITIONS THAT MAY EXIST, THAT ARE NOTE COVERED UNDER THESE PLANS.
- THE CONTRACTOR AND ALL SUB-CONTRACTORS SHALL NOT DAMAGE ANY INSTRUMENTS OR EQUIPMENT DURING THE COURSE OF THE PROJECT.
- THE CONTRACTOR AND ALL SUB-CONTRACTORS SHALL RETURN ANY INSTRUMENTS OR EQUIPMENT THAT ARRIVES DAMAGED.
- METAL STUD FRAMING SHALL BE 18 GA @ 16" O.C. UNLESS OTHERWISE NOTED.
- RE: STRUCTURAL FOR DETAILS.
- WALL, MILLWORK, & EQUIPMENT ELEVATIONS ARE MEASURED FROM FINISHED FLOOR, UNLESS OTHERWISE NOTED.
- DIMENSIONS ARE TO FINISH FACE OF MATERIAL, UNLESS OTHERWISE NOTED.
- PROVIDE DOUBLE STUDS, BLOCKING, BRACING & STEEL BACK-UP PLATES REQUIRED TO SUPPORT EQUIPMENT, MISCELLANEOUS ITEMS, E.G. CASEWORK, CABINETS, FIXTURES, SIGNS WALL MOUNTED EQUIPMENT, ETC. TYPICAL.
- ALL SYMBOLS, ABBREVIATIONS, & NOTES MARKED "TYPICAL," OR "TYP." SHALL APPLY IN ALL SIMILAR CIRCUMSTANCES.
- REFERENCE MECHANICAL, ELECTRICAL, PLUMBING, TECHNOLOGY, & REFRIGERATION DRAWINGS FOR MECHANICAL, POWER, LIGHTING, DATA, PLUMBING, & REFRIGERATION REQUIREMENTS.
- REFERENCE FOOD SERVICE DRAWINGS FOR SCHEDULED EQUIPMENT.
- DO NOT SCALE DRAWINGS.

## T.R.U./SWEET ST. COLOR LEGEND

- PLUMBING FIXTURES & LOCATIONS
- ELECTRICAL FIXTURES & LOCATIONS
- DATA FIXTURES & LOCATIONS
- LIGHTING FIXTURES & LOCATIONS
- REFRIGERATION FIXTURES & LOCATIONS
- SPECIAL MILLWORK ITEMS
- EQUIPMENT BUMPERS

## T.R.U./SWEET ST. MILLWORK NOTES

- GENERAL:
- MILLWORK WALLS TO BE INSTALLED PRIOR TO TILE ON FLOOR. MILLWORK CABINETS TO BE INSTALLED AFTER TILE ON FLOOR & WALLS.
  - SUPPLY ACCESS PANELS AS REQUIRED. FIELD VERIFY EXACT LOCATIONS.
  - WHERE APPLICABLE CABINETS WILL BE LINE BORED FOR ADJUSTABLE SHELVING.
  - ALL MILLWORK IN TEXAS ROUND UP & FUDGE AREAS SHALL BE CONSTRUCTED USING 19MM (3/4") KOMATEX INTEGRAL FOAM SHEETS UNLESS NOTED OTHERWISE.
  - PROVIDE 3/4" THK. VERTICAL SUPPORTS IN BASE CABINETS CONT. FROM FRONT TO BACK @ 48" O.C. MAX.
  - PLUMBING WALL CONNECTIONS TO BE INSTALLED BELOW ELECTRICAL/DATA WALL CONNECTIONS.
- HARDWARE:
- HINGES: BLUM. CLIP TOP BLUMOTION SOFT CLOSE. STEEL W/ POLISHED FINISH.
  - PULLS: HAFELE, ALUMINUM HANDLE, DARK OIL RUBBED BRONZE ITEM # 124 02 332
  - CATCHES: EPOC MAGNETIC
  - LED LIGHTS: HAFELE, "LOOK" 12V STRIP.
  - 1/4" PLEXI-GLASS INSERT 6"W x 5'H x 30'L WITH ADJUSTABLE PARTITIONS.
- COLORS:
- ALL SOLID SURFACE TO BE SSF-1, UNLESS OTHERWISE NOTED.
  - ALL LAMINATE AT EXTERIOR EXPOSED SURFACE AREAS TO BE PL-1, UNLESS OTHERWISE NOTED.
  - INTERIOR CABINETS EXPOSED SURFACES TO BE PL-3, UNLESS OTHERWISE NOTED.
- NOTE: FIELD VERIFY THE ABOVE FINISHES. CONFIRM WITH OWNER.

## SWEET ST. ELEVATION - KEYED NOTES

- COUNTER: SOLID SURFACE AS SCHEDULED.
  - WALL CAP: SOLID SURFACE AS SCHEDULED.
  - WALL TILE AS SCHEDULED.
  - DECORATIVE TILE BAND AS SCHEDULED.
  - BASE AS SCHEDULED.
  - TILE MEDALLION: RE: 6 / A8.75
  - PONY WALL ASSEMBLY: RE: T.R.U. DETAIL SHEETS FOR WALL HEIGHT, THICKNESS, & FINISHES.
  - MILLWORK: RE: SWEET ST. DETAIL SHEETS FOR PLAN DIMENSIONS.
  - MILLWORK DOORS & SCHEDULED HARDWARE.
  - MILLWORK SUPPORT LEG: RE: 14 / A8.76 & - / --
  - SOAP DISPENSER.
  - PAPER TOWEL DISPENSER.
  - FOOD SERVICE EQUIPMENT.
  - 25" HIGH SNEEZE GUARD. MFR. ADM. MODEL RING EP-5. BRUSHED STAINLESS STEEL, FLANGE WITH COVER, & 1/4" TEMPERED GLASS.
  - 3 BAY 17" HIGH SNEEZE GUARD WITH LED TUBE. MFR. ADM. MODEL EP-22. BRUSHED STAINLESS STEEL, FLANGE WITH COVER, WITH LED LIGHTING BAR, & 1/4" TEMPERED GLASS.
  - TRASH CAN BY OWNER.
  - EQUIPMENT POWER LOCATION. COORDINATE FINAL LOCATION WITH FOOD SERVICE EQUIPMENT REQUIREMENTS.
  - DATA LOCATION.
  - WATER VALVE BOX.
  - BACK SPLASH: SOLID SURFACE AS SCHEDULED.
  - PLASTIC LAMINATE FINISH AS SCHEDULED.
  - WOOD FINISH AS SCHEDULED.
  - TEMPERED GLASS DISPLAY WINDOW.
  - 12" X 12" ACCESS PANEL.
  - ACCESS PANEL.
  - MILLWORK DRAWER WITH STAINLESS STEEL DRAWER GLIDES, KNAPE-VOGT MODEL 6400 SS & DRAWER PULLS, HAFELE, DARK OIL RUBBED, ITEM 116.07.319 **AT DRAWERS ONLY.**
  - METAL TRIM BAND.
- NOTE: NOT ALL NOTES ARE USED ON THIS SHEET



**BUC-EE'S**

A DEVELOPMENT OF

Buc-ee's Benton, LLC  
Saline County, Arkansas

TEL: (979) 230-2920

**BUC-EE'S TRAVEL CENTER**  
**BENTON, ARKANSAS**

**74K - L - 2025 - Q1**  
**INTERSTATE 30 & STATE HIGHWAY 229**  
**BENTON, ARKANSAS 72019**

**LAWRENCE S. LEVINSON, A.I.A.**

7800 Washington Ave., Suite 600 Houston, TX 77007  
main: 713.600.3600 www.laarc.com

### ISSUE/REVISION LOG:

No.	DESCRIPTION	DATE
1	OWNER CHANGES	09/09/2024
3	OWNER CHANGES	04/23/2025



04/23/2025

ISSUED FOR REVIEW:	04/26/2024
ISSUED FOR BID:	05/14/2024
ISSUED FOR PERMIT:	05/14/2024

Copyright 2024 Lawrence S. Levinson, A.I.A. Warning: This document is protected by U.S. Copyright Law Under Section 102 of the U.S. Copyright and the Architectural Works Copyright Protection Act of 1990. Unauthorized reproduction and distribution of this document or any portion of it, other than for use of the particular project, is prohibited and may result in severe civil and criminal penalties, and will be prosecuted to maximum extent possible under the law.

**A8.91**

**SWEET STREET - ELEVATIONS**

LAARC PROJECT NUMBER: 2025-000.000

**BENTON, ARKANSAS**