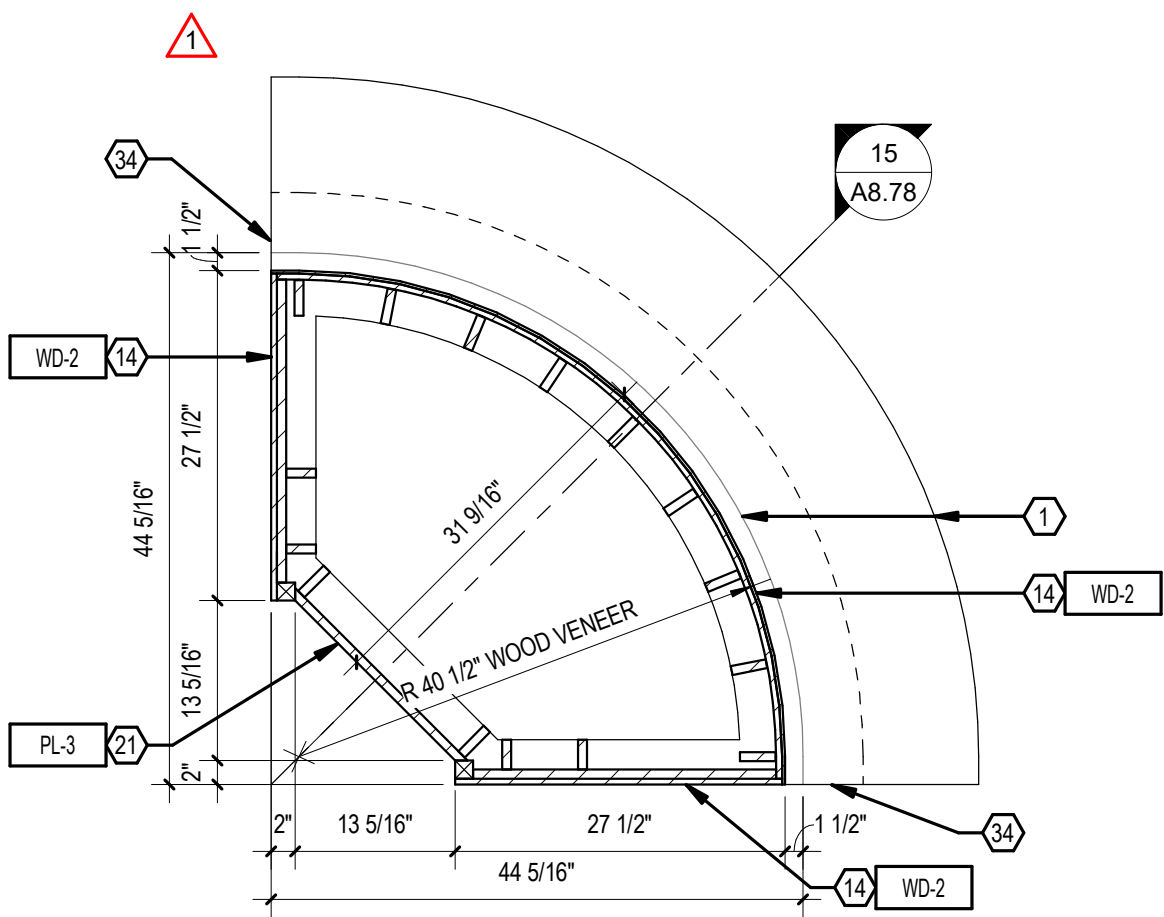


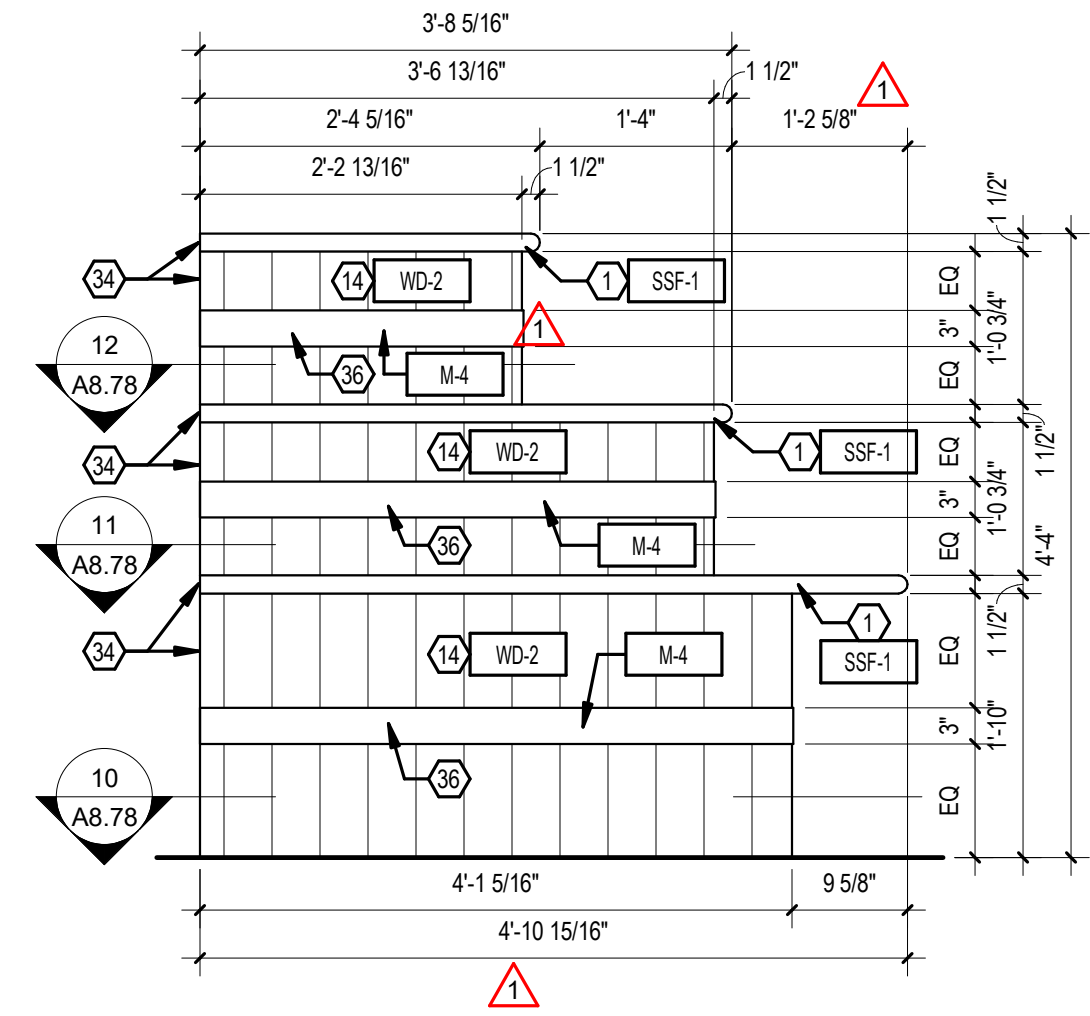
15 T.R.U. CORNER CASE - SECT.

1" = 1'-0"



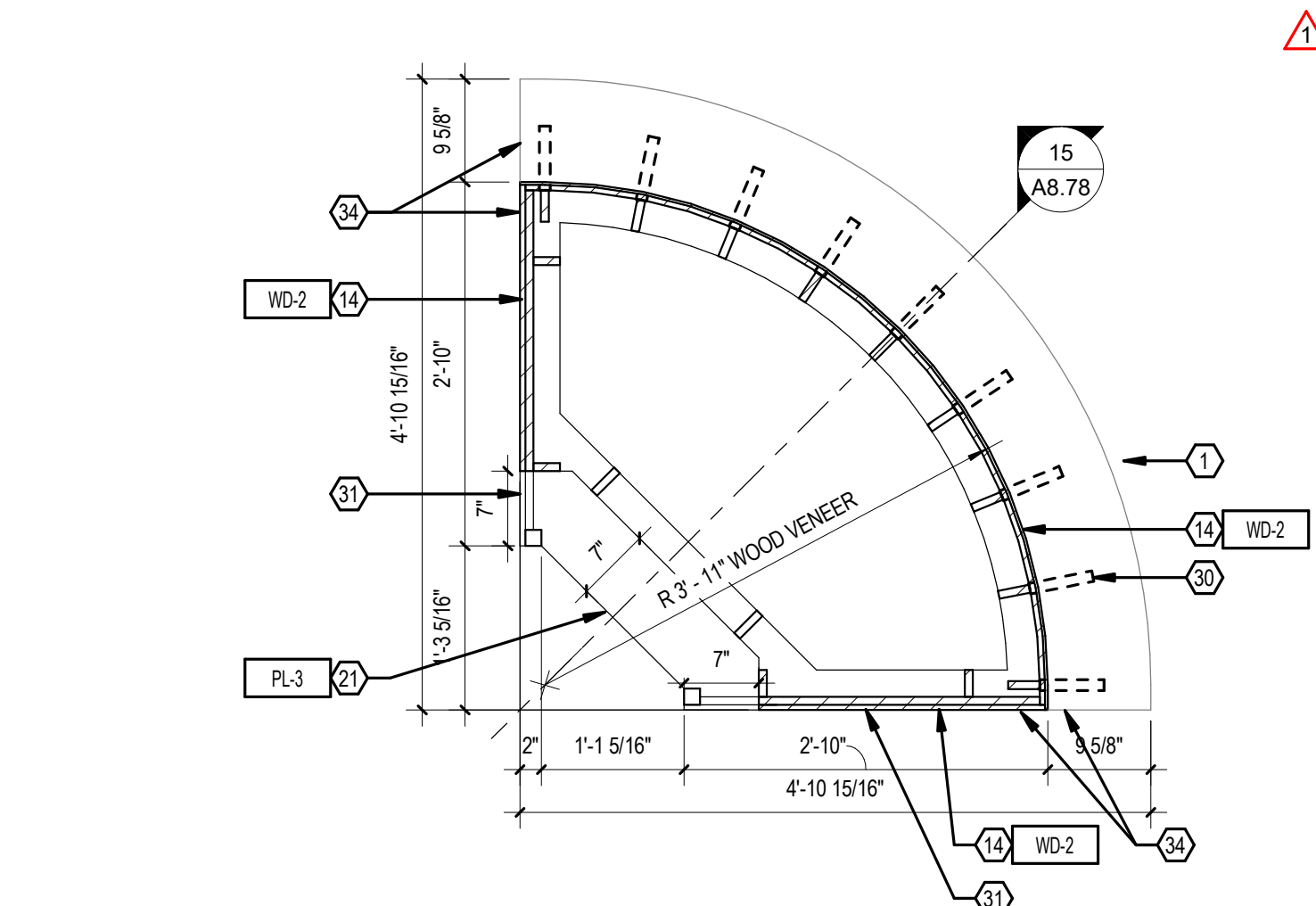
11 T.R.U. CORNER CASE - PLAN

3/4" = 1'-0"



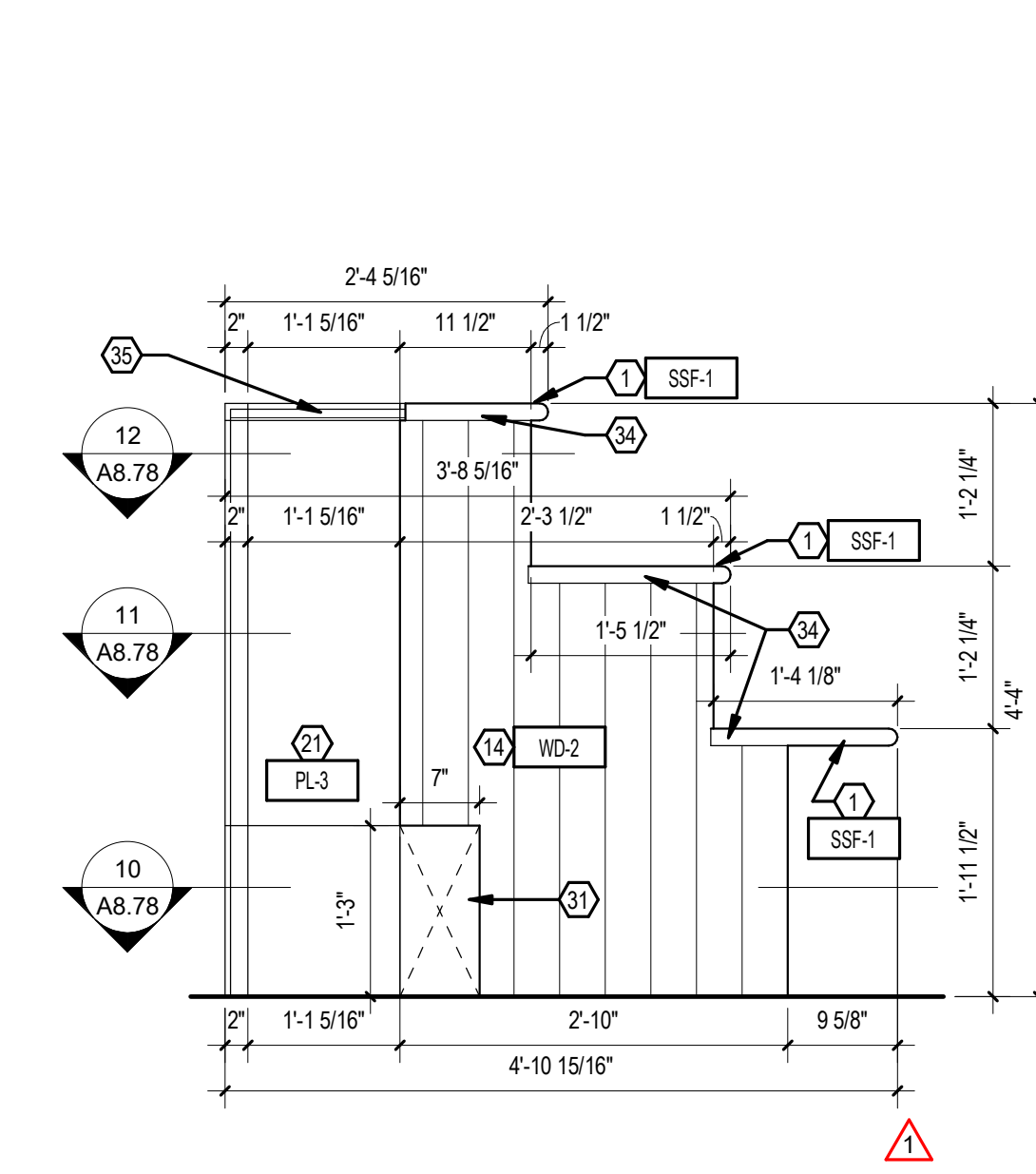
14 T.R.U. CORNER CASE - ELEV.

3/4" = 1'-0"



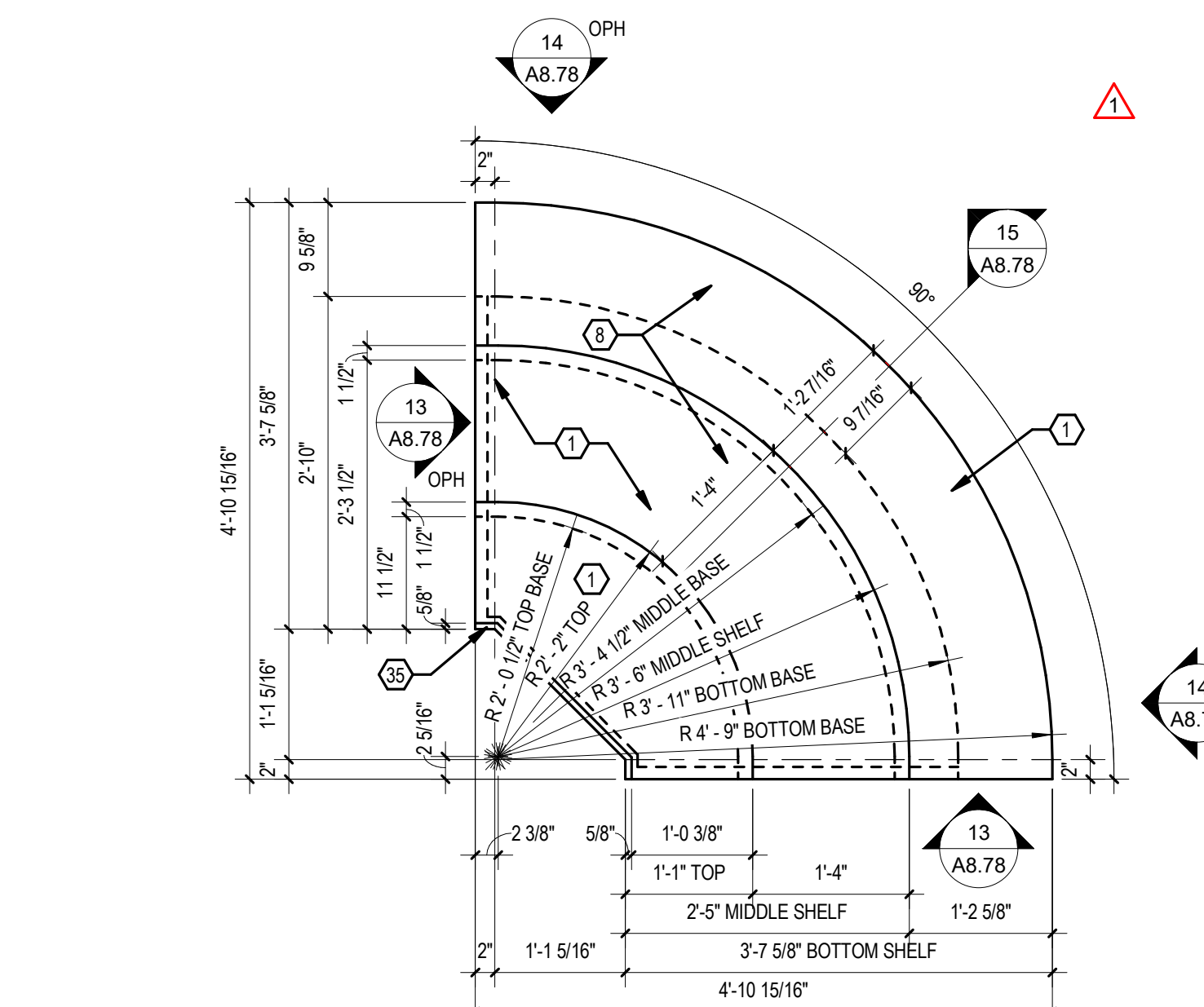
10 T.R.U. CORNER CASE - PLAN

3/4" = 1'-0"



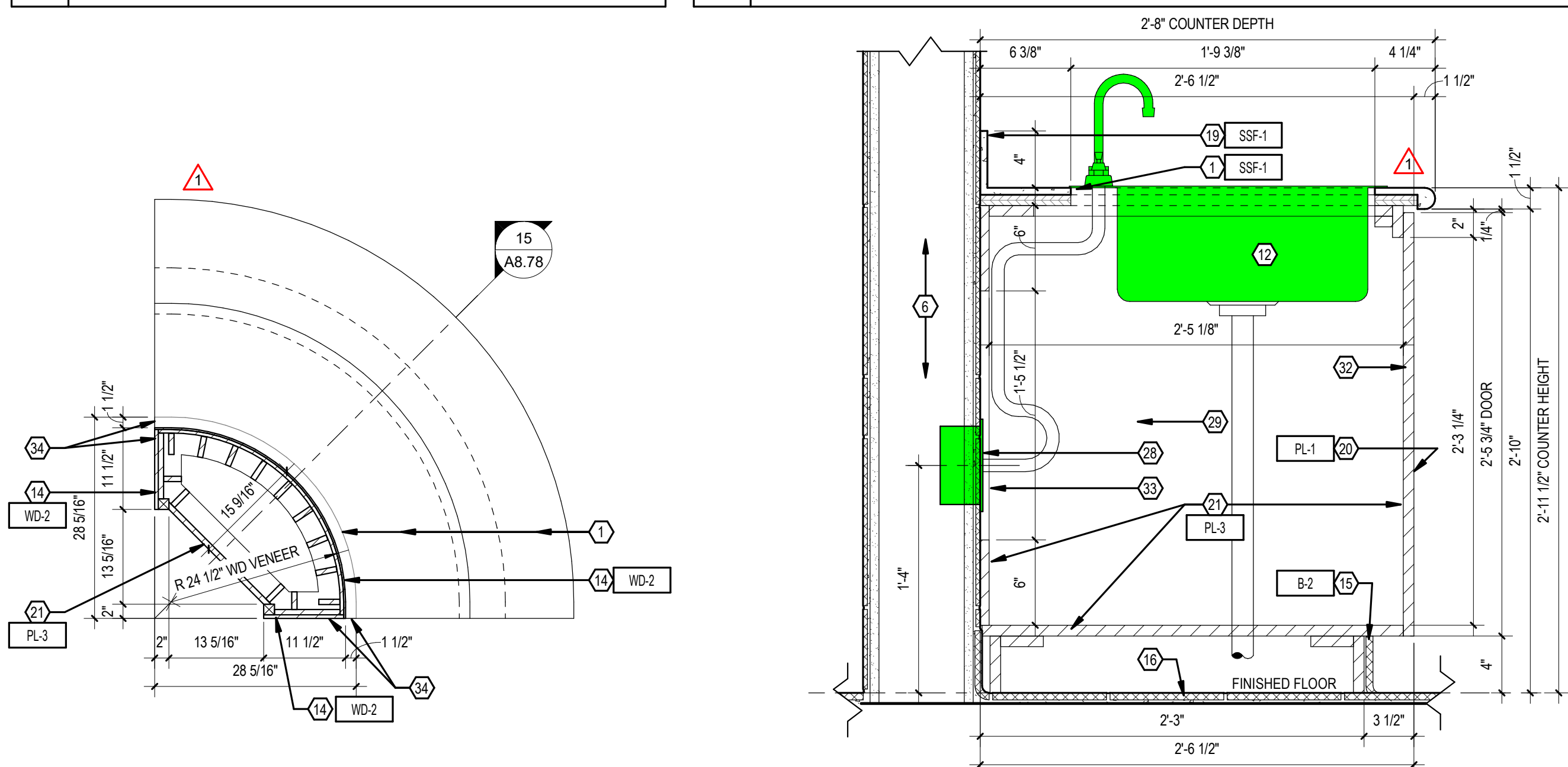
13 T.R.U. CORNER CASE - ELEV.

3/4" = 1'-0"



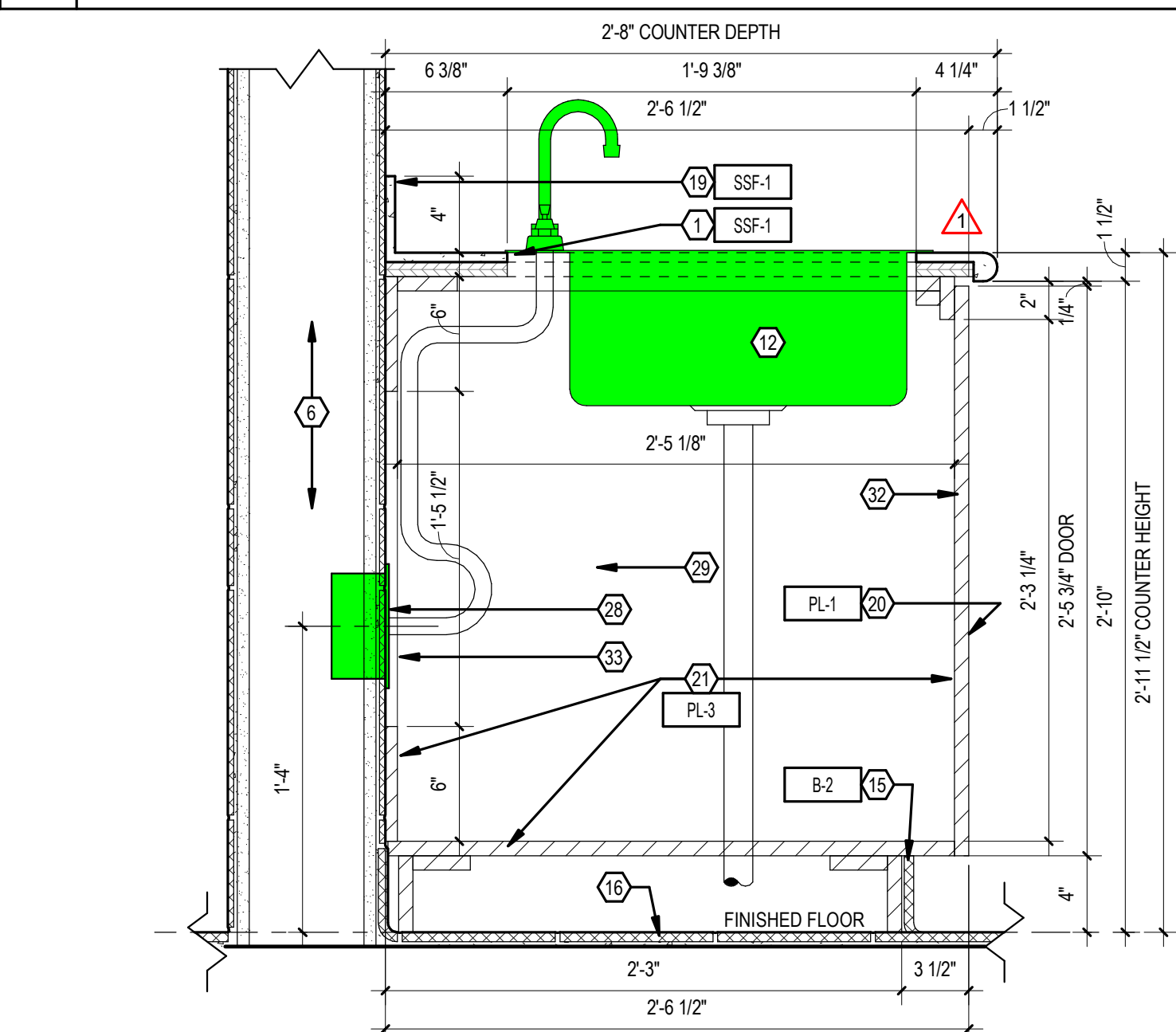
9 T.R.U. CORNER CASE - PLAN

3/4" = 1'-0"



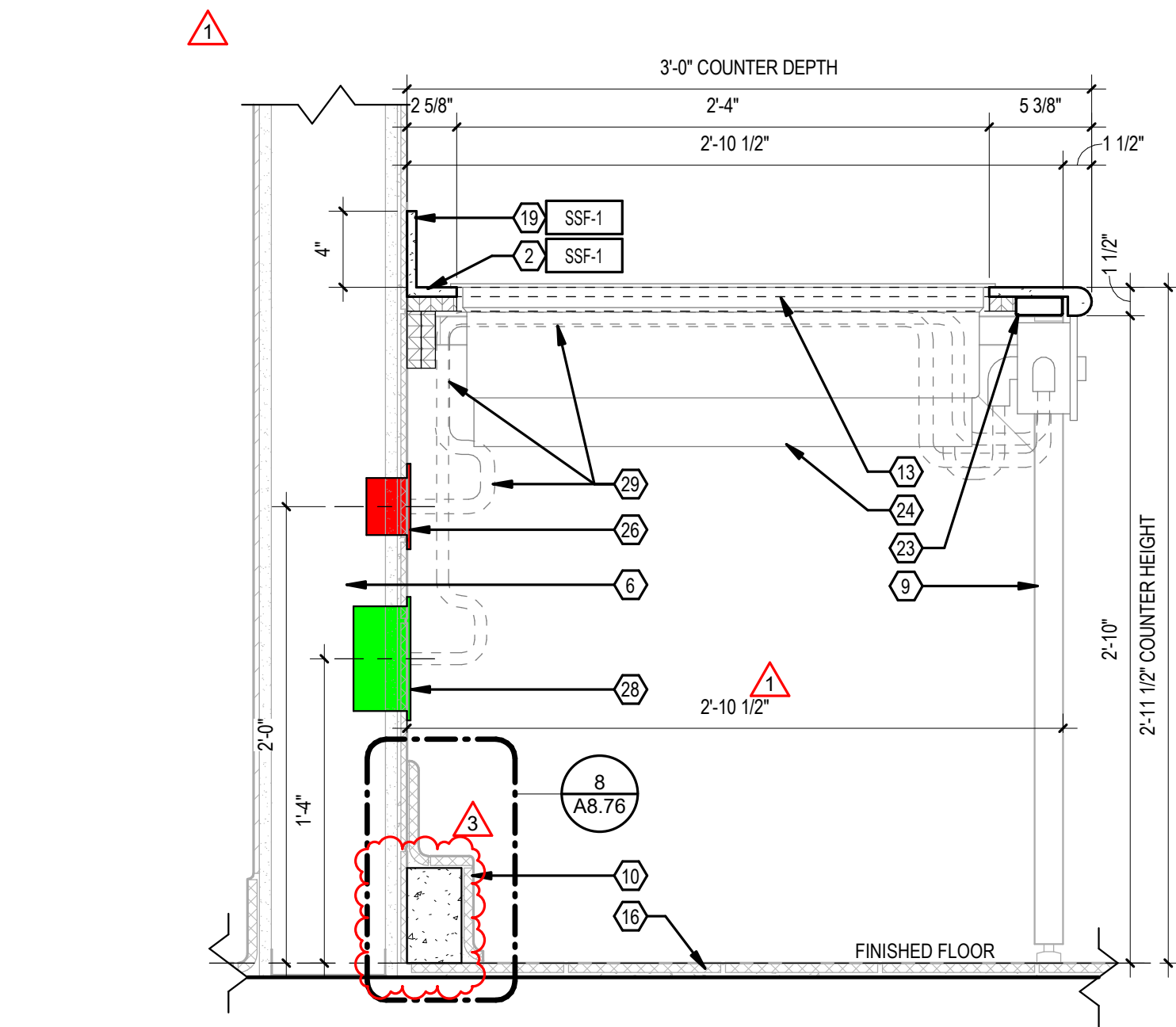
12 T.R.U. CORNER CASE - PLAN

3/4" = 1'-0"



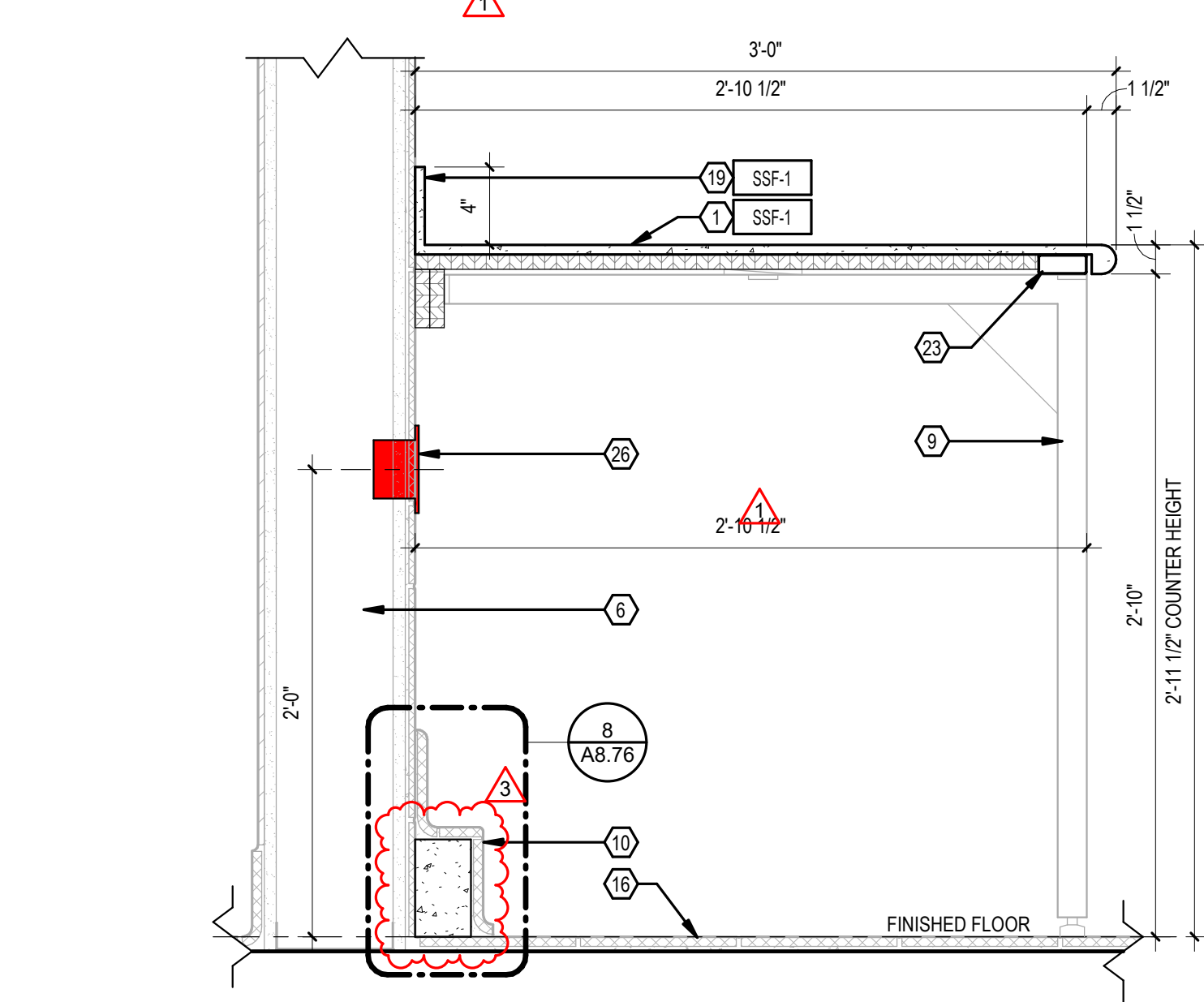
8 T.R.U. - MILLWORK SECTION

1 1/2" = 1'-0"



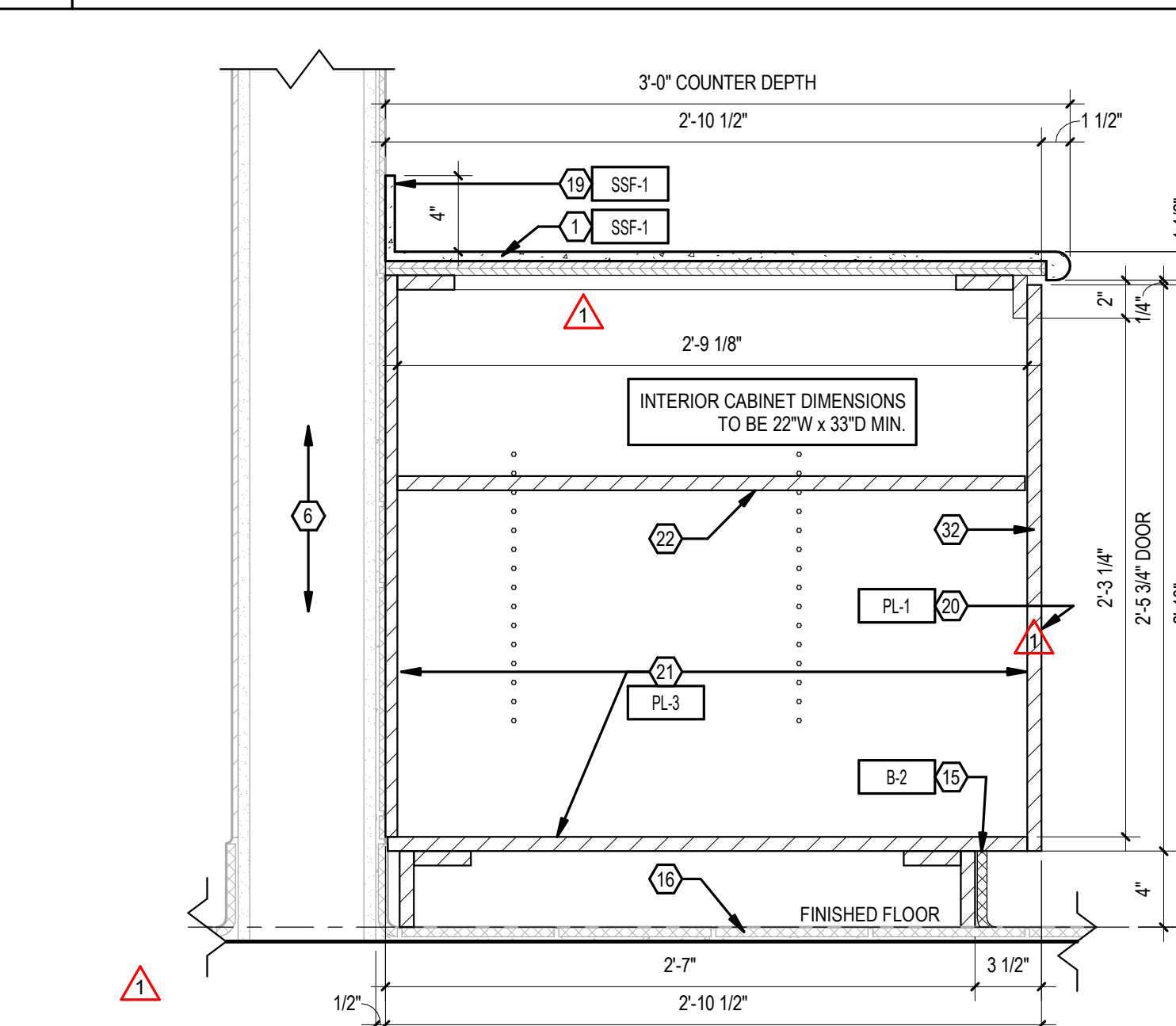
6 T.R.U. - MILLWORK SECTION

1 1/2" = 1'-0"



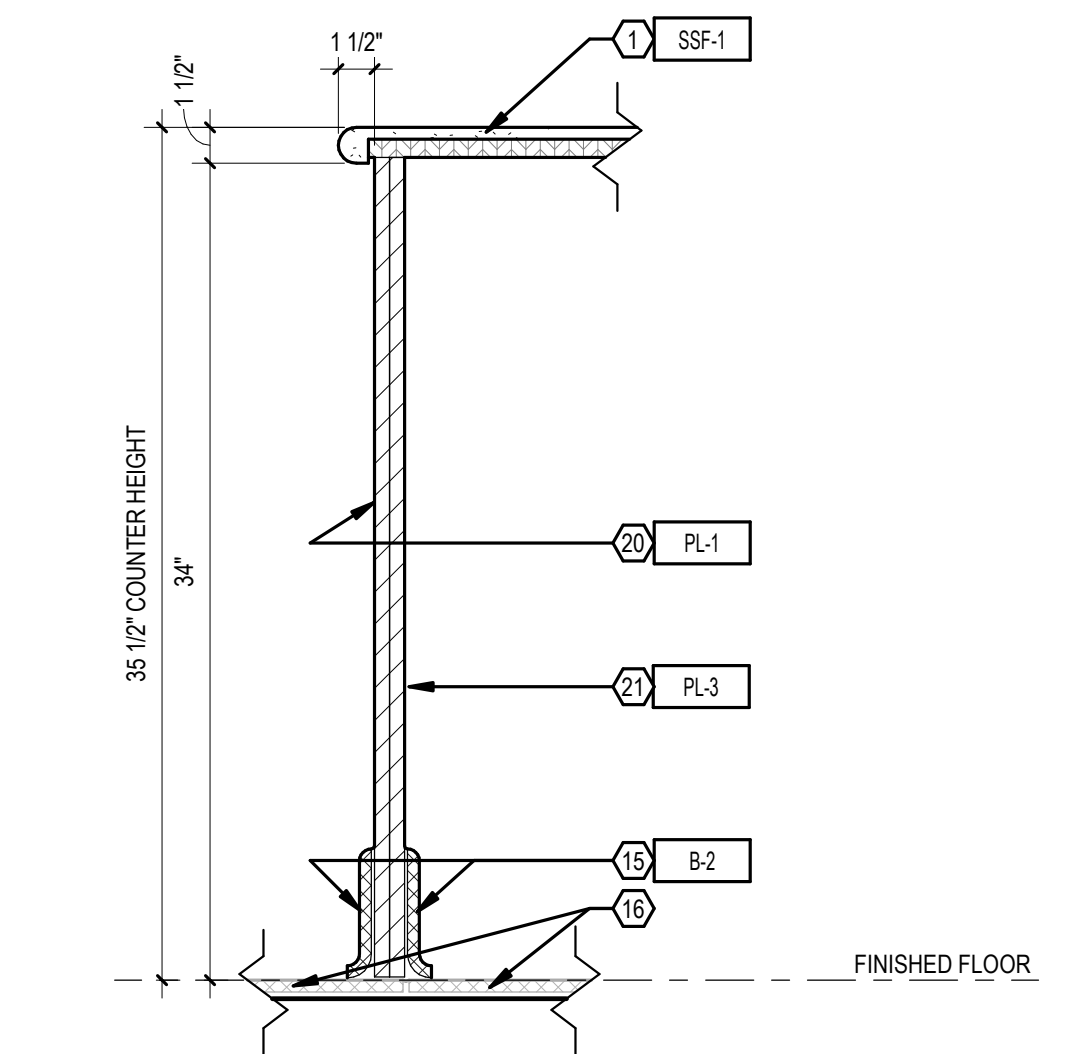
5 T.R.U. - MILLWORK SECTION

1 1/2" = 1'-0"



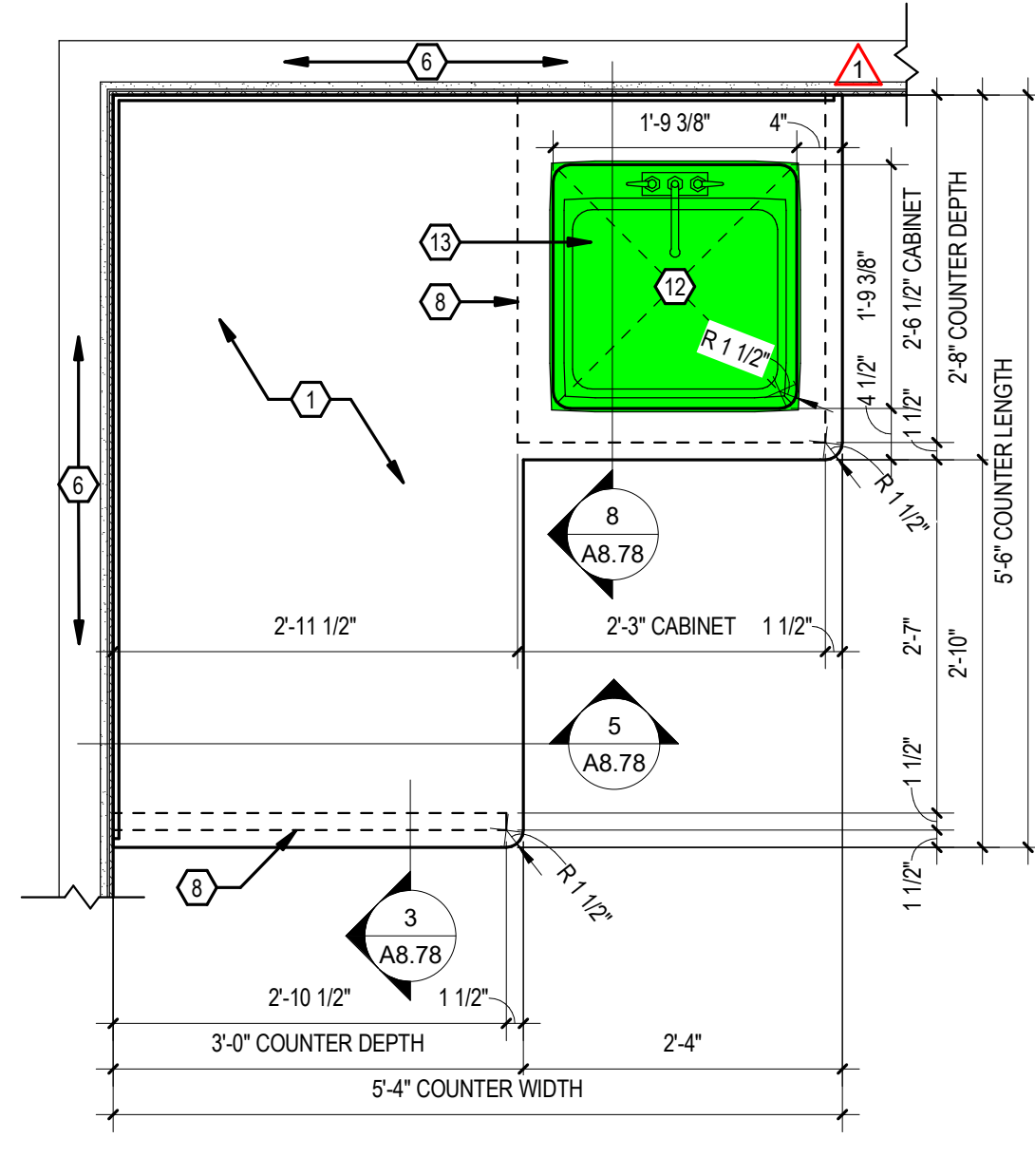
4 T.R.U. - MILLWORK SECTION

1 1/2" = 1'-0"



3 T.R.U. - MILLWORK SECTION

1 1/2" = 1'-0"



2 T.R.U. - MILLWORK PLAN

3/4" = 1'-0"

T.R.U./SWEET ST. GENERAL NOTES

- THE CONTRACTOR & SUB-CONTRACTORS SHALL VERIFY ALL EXISTING CONDITIONS PRIOR TO PERFORMING ANY WORK & SHALL NOTIFY THE ARCHITECT IMMEDIATELY OF ANY CONDITIONS THAT MAY EXIST, THAT ARE NOTE COVERED UNDER THESE PLANS.
- THE CONTRACTOR AND ALL SUB-CONTRACTORS SHALL NOT DAMAGE ANY INSTRUMENTS OR EQUIPMENT DURING THE COURSE OF THE PROJECT.
- THE CONTRACTOR AND ALL SUB-CONTRACTORS SHALL RETURN ANY INSTRUMENTS OR EQUIPMENT THAT ARRIVES DAMAGED.
- METAL STUD FRAMING SHALL BE 18 GA @ 16" O.C. UNLESS OTHERWISE NOTED. RE: STRUCTURAL FOR DETAILS.
- WALL, MILLWORK, & EQUIPMENT ELEVATIONS ARE MEASURED FROM FINISHED FLOOR. UNLESS OTHERWISE NOTED.
- DIMENSIONS ARE TO FINISH FACE OF MATERIAL, UNLESS OTHERWISE NOTED.
- PROVIDE DOUBLE STUDS, BLOCKING, BRACING & STEEL BACK-UP PLATES REQUIRED TO SUPPORT EQUIPMENT. MISCELLANEOUS ITEMS, E.G. CASEWORK, CABINETS, FIXTURES, SIGNS WALL MOUNTED EQUIPMENT, ETC. TYPICAL.
- ALL SYMBOLS, ABBREVIATIONS, & NOTES MARKED "TYPICAL," OR "TYP." SHALL APPLY IN ALL SIMILAR CIRCUMSTANCES.
- REFERENCE MECHANICAL, ELECTRICAL, PLUMBING, TECHNOLOGY, & REFRIGERATION DRAWINGS FOR MECHANICAL, POWER, LIGHTING, DATA, PLUMBING, & REFRIGERATION REQUIREMENTS.
- REFERENCE FOOD SERVICE DRAWINGS FOR SCHEDULED EQUIPMENT.
- DO NOT SCALE DRAWINGS.

T.R.U./SWEET ST. COLOR LEGEND

- PLUMBING FIXTURES & LOCATIONS
- ELECTRICAL FIXTURES & LOCATIONS
- DATA FIXTURES & LOCATIONS
- LIGHTING FIXTURES & LOCATIONS
- REFRIGERATION FIXTURES & LOCATIONS
- SPECIAL MILLWORK ITEMS
- EQUIPMENT BUMPERS

T.R.U./SWEET ST. MILLWORK NOTES

GENERAL:

- MILLWORK WALLS TO BE INSTALLED PRIOR TO TILE ON FLOOR. MILLWORK CABINETS TO BE INSTALLED AFTER TILE ON FLOOR & WALLS.
- SUPPLY ACCESS PANELS AS REQUIRED. FIELD VERIFY EXACT LOCATIONS.
- WHERE APPLICABLE CABINETS WILL BE LINE BORED FOR ADJUSTABLE SHELVING.
- ALL MILLWORK IN TEXAS ROUND UP & FUDGE AREAS SHALL BE CONSTRUCTED USING 18MM (3/4") KOMATEX INTEGRAL FOAM SHEETS UNLESS NOTED OTHERWISE.
- PROVIDE 3/4" THK. VERTICAL SUPPORTS IN BASE CABINETS CONT. FROM FRONT TO BACK @ 48" O.C. MAX.
- PLUMBING WALL CONNECTIONS TO BE INSTALLED BELOW ELECTRICAL DATA WALL CONNECTIONS.

COLORS:

- HINGES: BLUM. CLIP TOP BLUMOTION SOFT CLOSE. STEEL W/ POLISHED FINISH.
- PULLS: HAFELE. ALUMINUM HANDLE, DARK OIL RUBBED BRONZE ITEM # 124 02 332
- CATCHES: EPOC MAGNETIC
- LED LIGHTS: HAFELE. "LOOK" 12V STRIP.
- 1/4" PLEXI-GLASS INSERT 6"W x 5'H x 30", WITH ADJUSTABLE PARTITIONS.

NOTE: FIELD VERIFY THE ABOVE FINISHES. CONFIRM WITH OWNER.

T.R.U. MILLWORK - KEYED NOTES

- SOLID SURFACE TOP AS SCHEDULED WITH BULLNOSE EDGE PROFILE, & 1 1/2" RADIUS AT ALL CORNERS, ON 3/4" PLYWOOD SUBSTRATE.
- SOLID SURFACE TOP AS SCHEDULED, WITH BULL NOSE EDGE PROFILE ON CUSTOMER SIDE, & SQUARE EDGE PROFILE ON TRU SIDE, & 1/2" RADIUS CORNERS, ON 3/4" PLYWOOD SUBSTRATE.
- 2 3/8" GROMMET WITH COVER.
- TRASH HOLE WITH STAINLESS STEEL GROMMET.
- WALL CAP. SOLID SURFACE AS SCHEDULED. BULLNOSE PROFILE SIDES & 1 1/2" RADIUS AT ALL CORNERS. UNLESS NOTED OTHERWISE.
- PONY WALL ASSEMBLY. RE: T.R.U. DETAIL SHEETS FOR WALL HEIGHT, THICKNESS, & FINISHES.
- GLASS WALL ASSEMBLY. RE: T.R.U. DETAILS SHEETS.
- MILLWORK. RE: T.R.U. DETAIL SHEETS FOR DIMENSIONS & FINISHES.
- MILLWORK SUPPORT LEG. RE: 14 / A8.76 & - / -
- EQUIPMENT BUMPER. RE: 8 / A8.76
- HAND LAVATORY STATION.
- POT FILL SINK.
- CUT OUT FOR DROP-IN FOOD SERVICE EQUIPMENT & PLUMBING FIXTURES.
- WOOD PLANK FINISH AS SCHEDULED.
- FLOOR TILE AS SCHEDULED.
- WALL TILE AS SCHEDULED, ON 5/8" CEMENT BOARD, ON 18 GA METAL STUD FRAMING @ 16" O.C.
- WALL TILE AS SCHEDULED, ON KOMATEX BOARD.
- BACKSPASH. SOLID SURFACE AS SCHEDULED.
- PLASTIC LAMINATE AS SCHEDULED ON ALL EXTERIOR SURFACES.
- PLASTIC LAMINATE AS SCHEDULED ON ALL INTERIOR & UNDER-COUNTER SURFACES.
- ADJUSTABLE SHELF WITH LINE BORED HOLES @ 1" O.C.
- 2 1/2" x 1" FULL LENGTH, STEEL TUBE REINFORCING.
- DROP-IN FOOD SERVICE EQUIPMENT.
- MICROPHONE. VERIFY FINAL LOCATION WITH OWNER.
- EQUIPMENT POWER LOCATION. COORDINATE FINAL LOCATION WITH FOOD SERVICE EQUIPMENT REQUIREMENTS.
- DATA LOCATION.
- WATER VALVE BOX. WATER LINE CONNECTION.
- ATTACH EQUIPMENT ELECTRICAL CABLES & PLUMBING TUBING TO UNDERSIDE OF COUNTER & WALL.
- 16 GA 6"x6"x1" WIDE ANGLE SUPPORTS. PAINT.
- 15"x7" OPENING FOR EQUIPMENT HOSES & CONNECTIONS.
- MILLWORK DOOR WITH SCHEDULED HARDWARE.
- COORDINATE CUT OUT IN BACK OF MILLWORK CASE FOR ELECTRICAL & PLUMBING CONNECTIONS & VALVE BOXES.
- MAKE EDGE OF SCHEDULED SOLID SURFACE TOP FLUSH WITH WOOD PLANK FINISH.
- PROVIDE 5/8" NOTCH, TO BE FIELD VERIFIED, IN SCHEDULED SOLID SURFACE TOP TO JOIN WITH WALL CAP. WHEN MILLWORK CASE IS SET.
- 3" BLACK METAL TRIM BAND (M-4) FASTEN WITH FLUSH COUNTERSUNK SCREWS. PAINT SCREW HEADS BLACK.
- SOLID SURFACE TOP AS SCHEDULED WITH 1/4" RADIUS EASED EDGES, ON KOMATEX SUBSTRATE.
- REMOVABLE STAINLESS STEEL CHOPPING BLOCK PAN WITH TRASH OPENING WITH 1/2" CONTINUOUS RIM.
- CHOPPING BLOCK BY OTHERS.
- 6"x6" SQUARE TRASH OPENING.
- 1-1/2"x1-1/2" STEEL TUBE REINFORCING. RE: 16 / A8.79
- FIXED SHELF WITH SCHEDULED FINISH.
- SLIDING SHELF MOUNT WITH STAINLESS STEEL DRAWER GLIDES. KNAPE-VOGT MODEL 6400 SS.
- 3/4"x3/4" 18GA MIN. TRIM ANGLE - BLACK.
- 2"x1/2" ALUMINUM Z CHANNEL REINFORCE WITH GUSSETS. RE: 17 / A8.79
- 1-1/2"x1-1/2" ALUMINUM ANGLES. USE FLUSH MOUNTING SCREWS.
- FLOOR SINK OPENING IN EQUIPMENT PAD. SCHEDULED BASE ON INSIDE FACE OF OPENING.

NOTE: ALL NOTES ARE USED ON THIS SHEET.



A DEVELOPMENT OF
Buc-ee's Benton, LLC
Saline County, Arkansas

TEL: (979) 230-2920

BUC-EE'S TRAVEL CENTER
BENTON, ARKANSAS

74K - L - 2025 - Q1
INTERSTATE 30 & STATE HIGHWAY 229
BENTON, ARKANSAS 72019

LAWRENCE S. LEVINSON, A.I.A.

7800 Washington Ave., Suite 600 Houston, TX 77007
main: 713.600.3600 www.laarc.com

ISSUE/REVISION LOG:

No.	DESCRIPTION	DATE
1	OWNER CHANGES	09/09/2024
3	OWNER CHANGES	04/23/2025



04/23/2025

ISSUED FOR REVIEW: 04/26/2024

ISSUED FOR BID: 05/14/2024

ISSUED FOR PERMIT: 05/14/2024

Copyright 2024 Lawrence S. Levinson, A.I.A. Warning: This document is protected by U.S. Copyright Law Under Section 102 of the U.S. Copyright and the Architectural Works Copyright Protection Act of 1990. Unauthorized reproduction and distribution of this document or any portion of it, other than for use of the particular project, is prohibited and may result in severe civil and criminal penalties, and will be prosecuted to maximum extent possible under the law.

A8.78

TEXAS ROUND UP - MILLWORK DETAILS

LAARC PROJECT NUMBER: 2025-000.000

BENTON, ARKANSAS