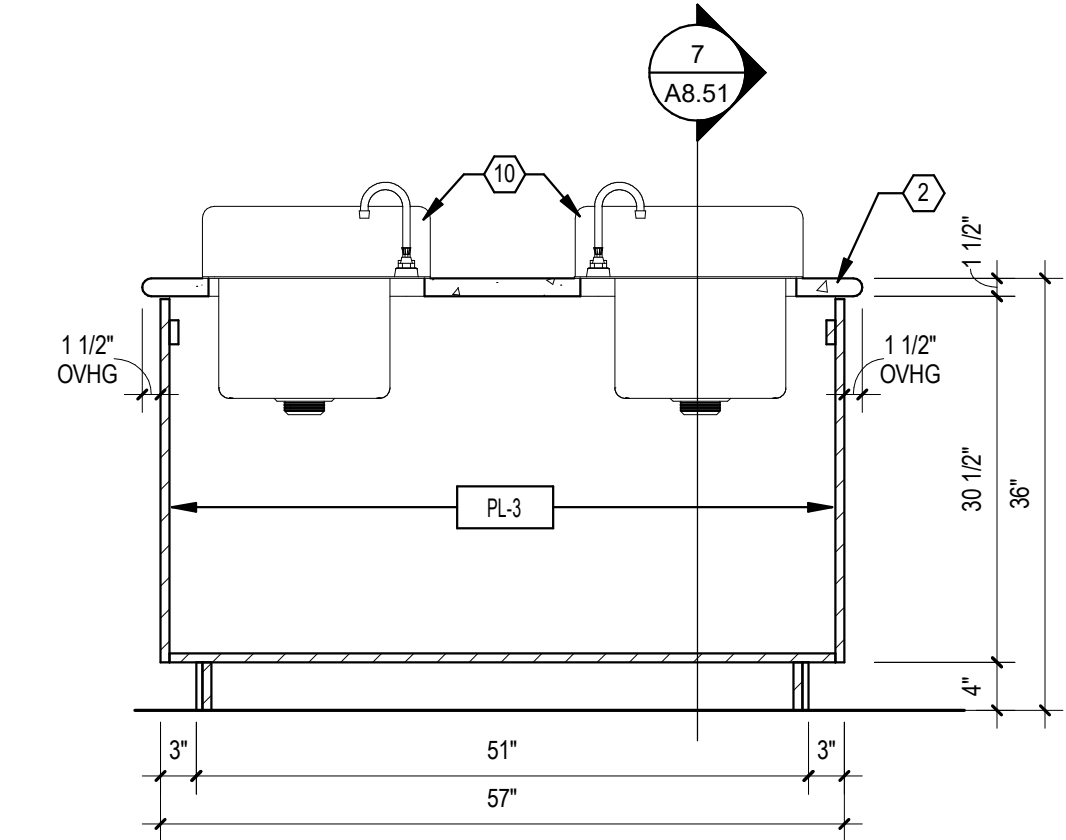
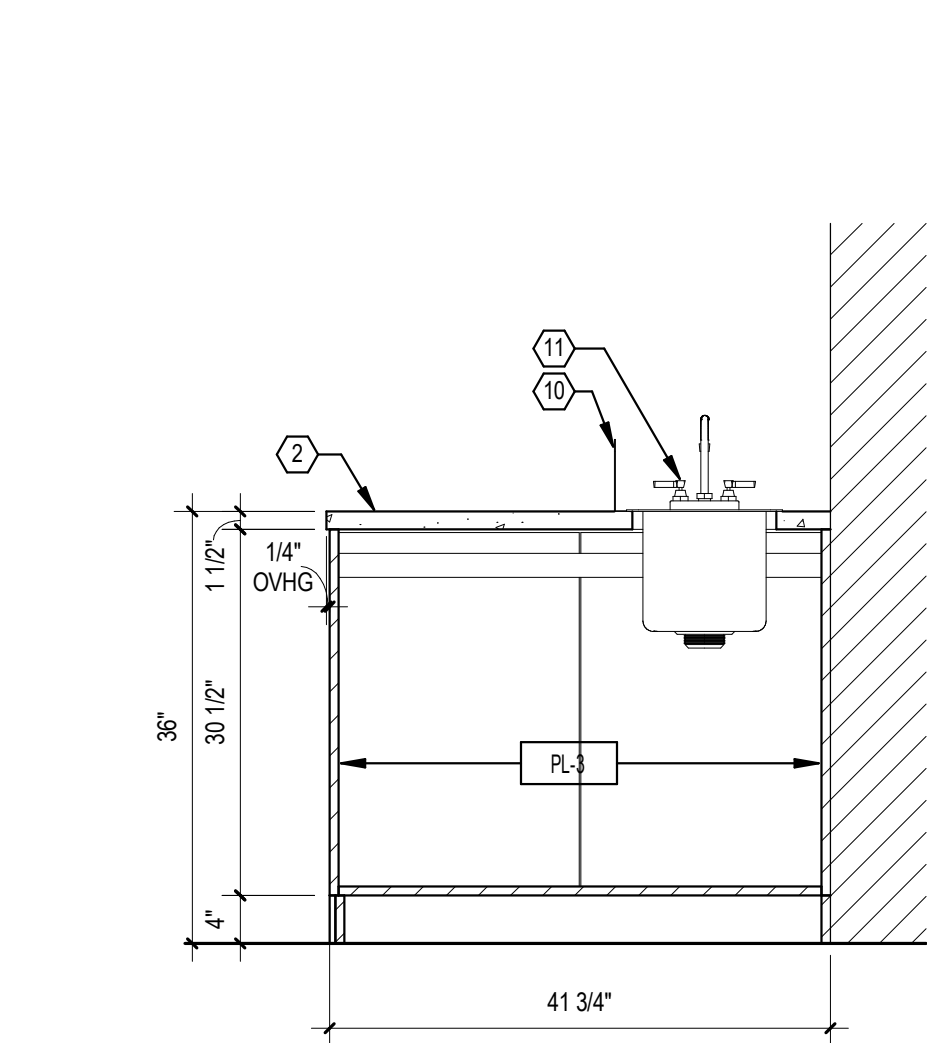


Autodesk Docs://74-Buc-ee's Benton-AR (L) 2023/01_BENTON AR_ARCH_(L)_rvt

4 BAKERY COUNTER - SECTION 3/4" = 1'-0"

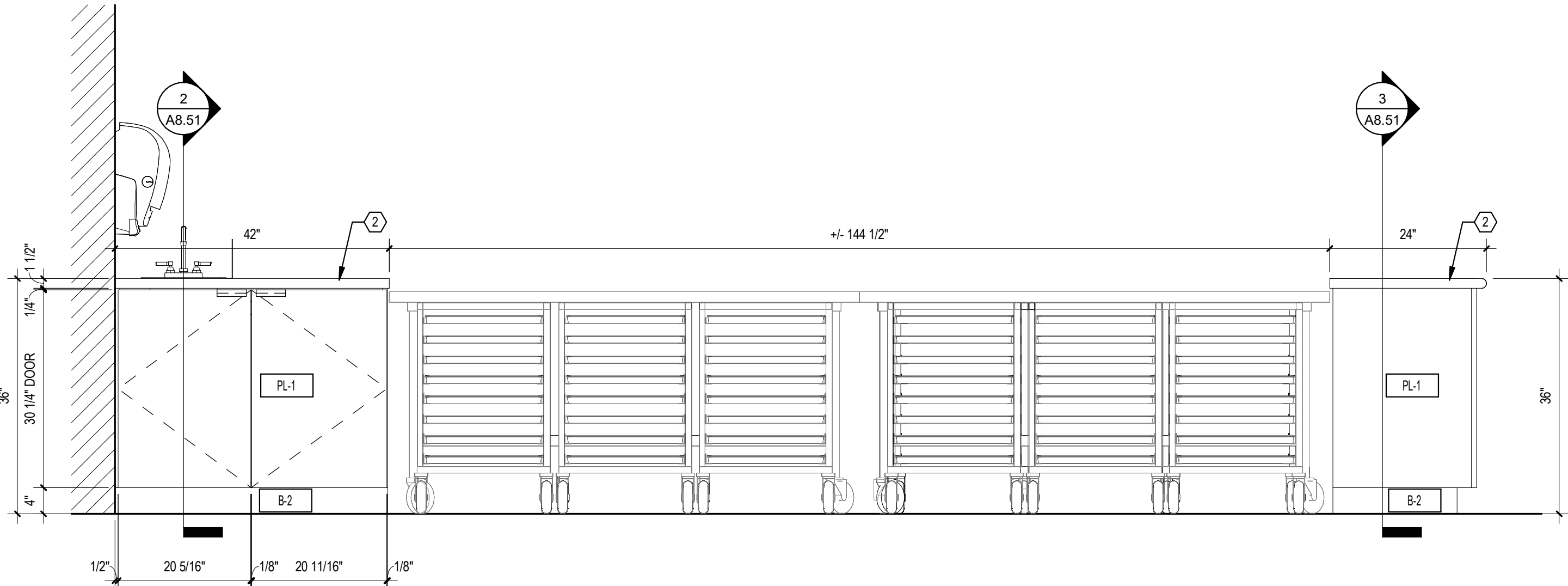


3 BAKERY COUNTER - SECTION 3/4" = 1'-0"

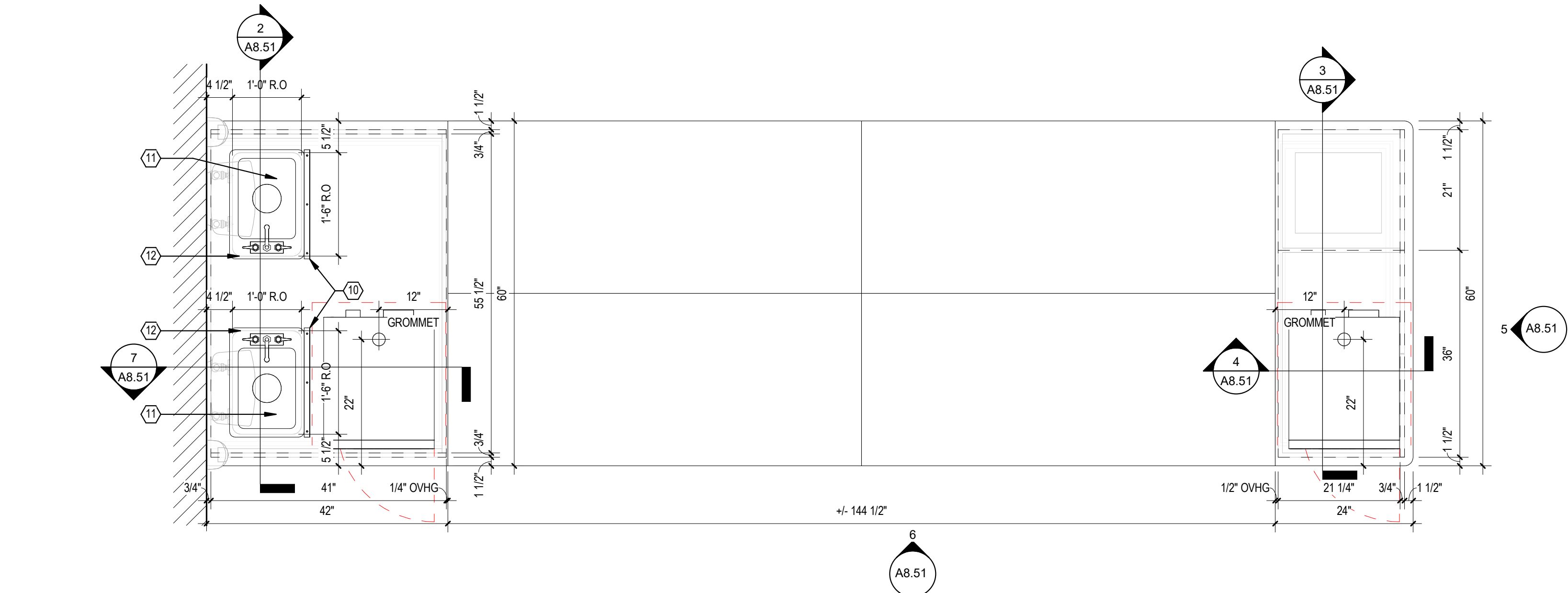


7 BAKERY COUNTER - SECTION 3/4" = 1'-0"

2 BAKERY COUNTER - SECTION 3/4" = 1'-0"



6 BAKERY COUNTER - ELEVATION 3/4" = 1'-0"



1 BAKERY COUNTERS - PLAN 3/4" = 1'-0"

MILLWORK - KEYED NOTES

- 1 BASE TILE AS SCHEDULED.
- 2 SOLID SURFACE- W/ BULLNOSE EDGES, SSF-1
- 3 CABLE CHASE
- 4 ACCESS PANEL
- 5 2-3/8" GROMMET WITH COVER
- 6 EQUIPMENT. -- RE: SCHEDULE
- 8 1-1/2" RADIUS CORNER
- 7 MILLWORK DOOR WITH SCHEDULED HARDWARE.
- 9 SCHEDULED LAMINATE ON EXTERIOR OF CABINET AND PL-3 ON INTERIOR OF CABINET.
- 10 15" L X 6" H STAINLESS STEEL COUNTER-MOUNTED SPLASH GUARD.
- 11 HAND LAVATORY STATION.
- 12 CUT OUT FOR DROP-IN PLUMBING FIXTURES.

NOT ALL NOTES ARE USED ON THIS SHEET

MILLWORK NOTES / SCHEDULE

- GENERAL:
1. MILLWORK TO BE INSTALLED AFTER TILE ON FLOOR.
 2. SUPPLY ACCESS PANELS AS REQUIRED. FIELD VERIFY EXACT LOCATIONS.
 3. WHERE APPLICABLE CABINETS WILL BE LINE BORES FOR ADJUSTABLE SHELVING.
 4. ALL MILLWORK IN COFFEE, FOUNTAIN, AND ICEE AREAS SHALL BE CONSTRUCTED USING 19MM (3/4") XOMATEX® INTEGRAL FOAM SHEETS UNLESS NOTED OTHERWISE.
 5. PROVIDE 3/4" THK. VERTICAL SUPPORTS IN BASE CABINETS CONT. FROM FRONT TO BACK @ 48" O.C. MAX.
 6. MILLWORK ELEVATIONS, SECTIONS AND DETAILS ARE FOR GENERAL LAYOUT ONLY. FINAL MILLWORK DESIGN AND DESIGN DRAWINGS SHALL BE PREPARED BY OTHERS. FINAL MILLWORK DESIGN AND DRAWINGS SHALL INCLUDE ANY ADDITIONAL STRUCTURAL STAINLESS STEEL SUPPORT FRAMES TO BE BUILT INTO THE CABINETS. FINAL MILLWORK DESIGN AND DESIGN DRAWINGS SHALL BE APPROVED BY OWNER'S REPRESENTATIVE. COMBINED WEIGHTS OF THE EQUIPMENT ON THE COUNTER IS APPROXIMATELY 4,500 LBS. EQUIPMENT LOCATIONS ARE FOR GENERAL LAYOUT ONLY. COORDINATE FINAL EQUIPMENT LOCATIONS WITH DRIP TRAYS AND OWNER'S REPRESENTATIVE.
- HARDWARE:
1. **HINGES:** BLUM, CLIP TOP BLUMOTION SOFT CLOSE, STEEL W/ POLISHED FINISH.
 2. **PULLS:** HAFELE, ALUMINUM HANDLE, DARK OIL-RUBBED BRONZE ITEM # 124.02.332
 3. **CATCHES:** EPOC MAGNETIC
 4. **LED LIGHTS:** HAFELE, "LOOK" 12V STRIP
 5. 1/4" PLEXI-GLASS INSERT 6" WXS 1X30" L, WITH ADJUSTABLE PARTITIONS
- COLORS:
1. ALL SOLID SURFACE TO BE SSF-1, UNLESS OTHERWISE NOTED.
 2. ALL LAMINATE AT EXTERIOR EXPOSED SURFACE AREAS TO RECEIVE PL-1, UNLESS OTHERWISE NOTED.
 3. INTERIOR CABINETS EXPOSED SURFACES TO BE PL-3, UNLESS OTHERWISE NOTED.
- NOTE: FIELD VERIFY THE ABOVE FINISHES, CONFIRM WITH OWNER.



BUC-EE'S

A DEVELOPMENT OF

Buc-ee's Benton, LLC
Saline County, Arkansas

TEL: (979) 230-2920

BUC-EE'S TRAVEL CENTER
BENTON, ARKANSAS
74K - L - 2025 -Q1
INTERSTATE 30 & STATE HIGHWAY 229
BENTON, ARKANSAS 72019

**LAWRENCE S.
LEVINSON, A.I.A.**

7800 Washington Ave., Suite 600 Houston, TX 77007
main: 713.600.3600 www.laarc.com

ISSUE/REVISION LOG:

No.	DESCRIPTION	DATE
3	OWNER CHANGES	04/23/2025



04/23/2025

ISSUED FOR REVIEW: 04/26/2024

ISSUED FOR BID: 05/14/2024

ISSUED FOR PERMIT: 05/14/2024

Copyright 2024 Lawrence S. Levinson, AIA. Warning: This document is protected by U.S. Copyright Law Under Section 102 of the U.S. Copyright and the Architectural Works Copyright Protection Act of 1990. Unauthorized reproduction and distribution of this document or any portion of it, other than for use of the particular project, is prohibited and may result in severe civil and criminal penalties, and will be prosecuted to maximum extent possible under the law.

A8.51

MILLWORK DETAILS -
BAKERY COUNTERS

LAARC PROJECT NUMBER: 2024-107.000

BENTON, ARKANSAS