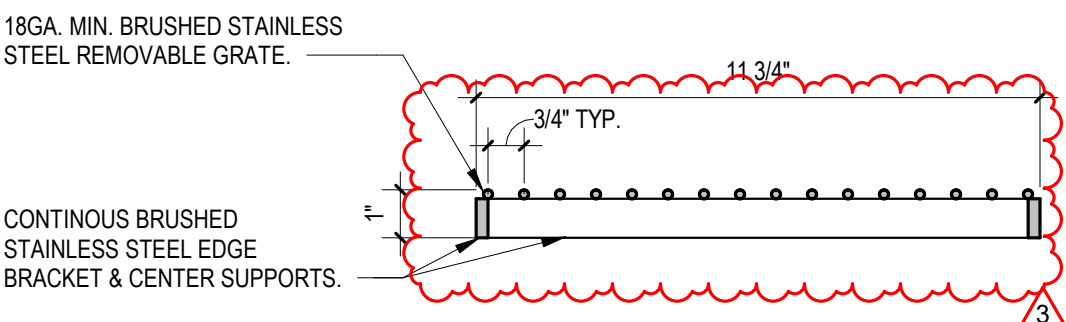
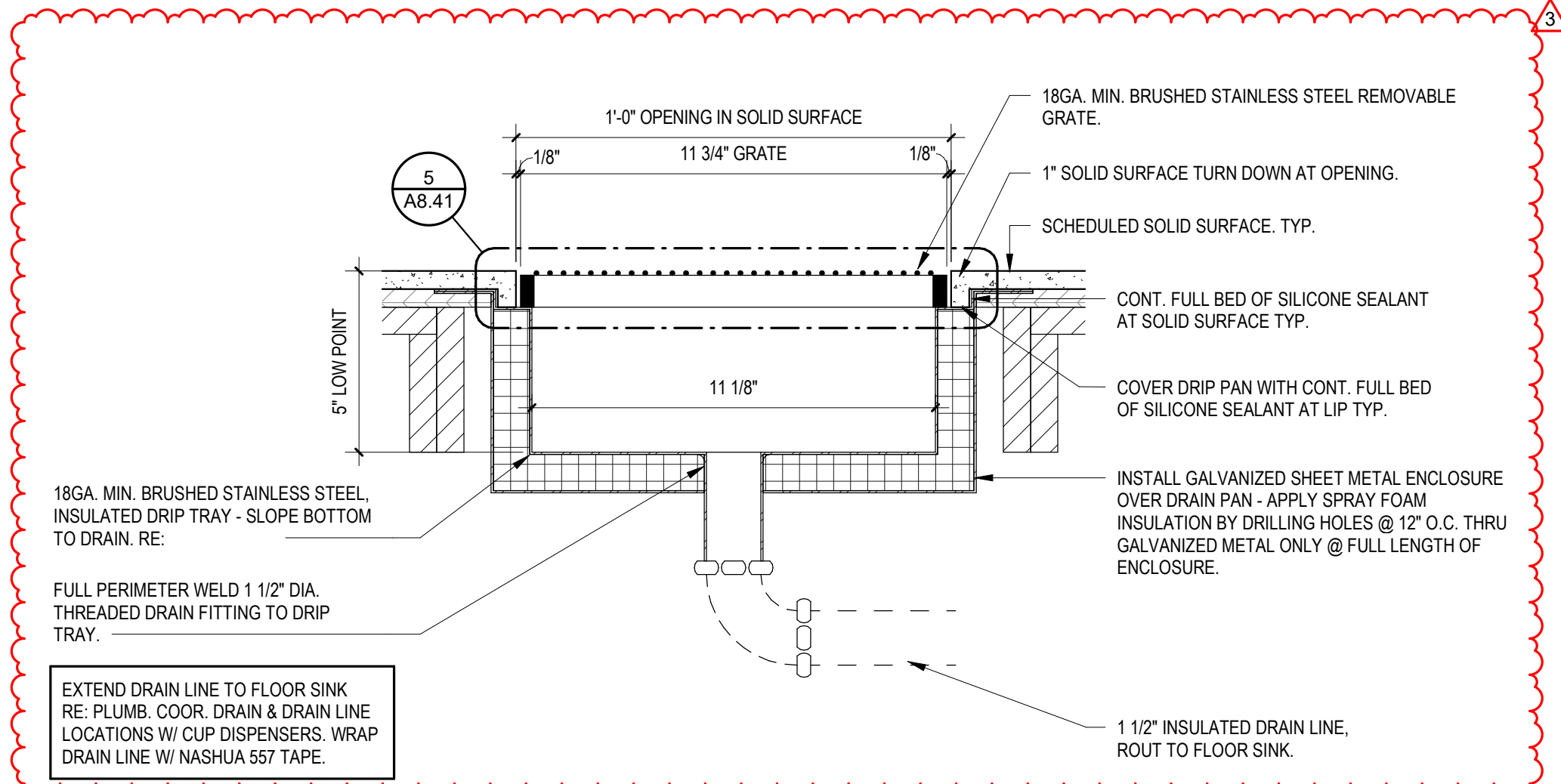


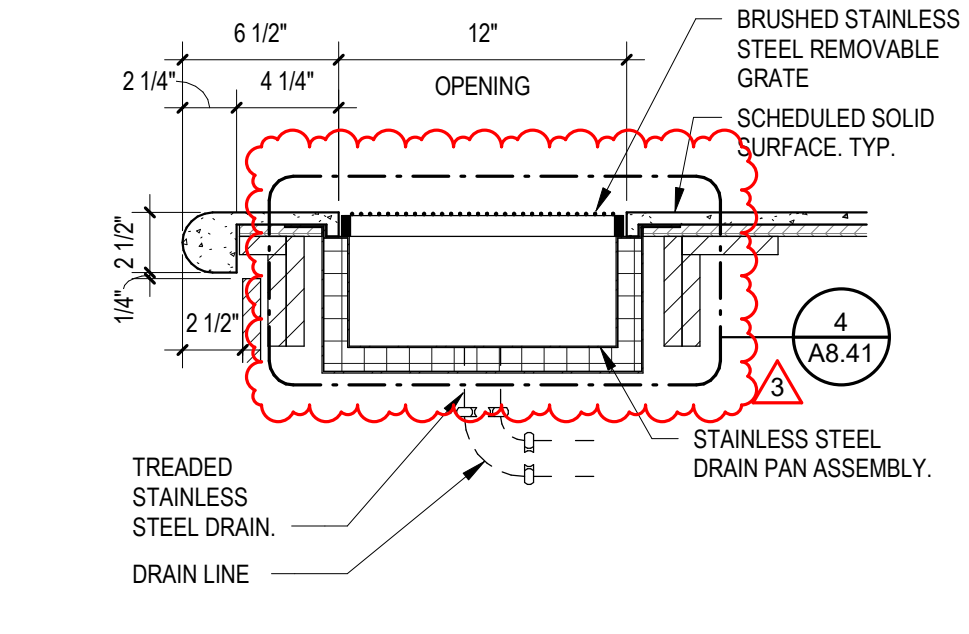
5 FOUNTAIN GRATE 3" = 1'-0"



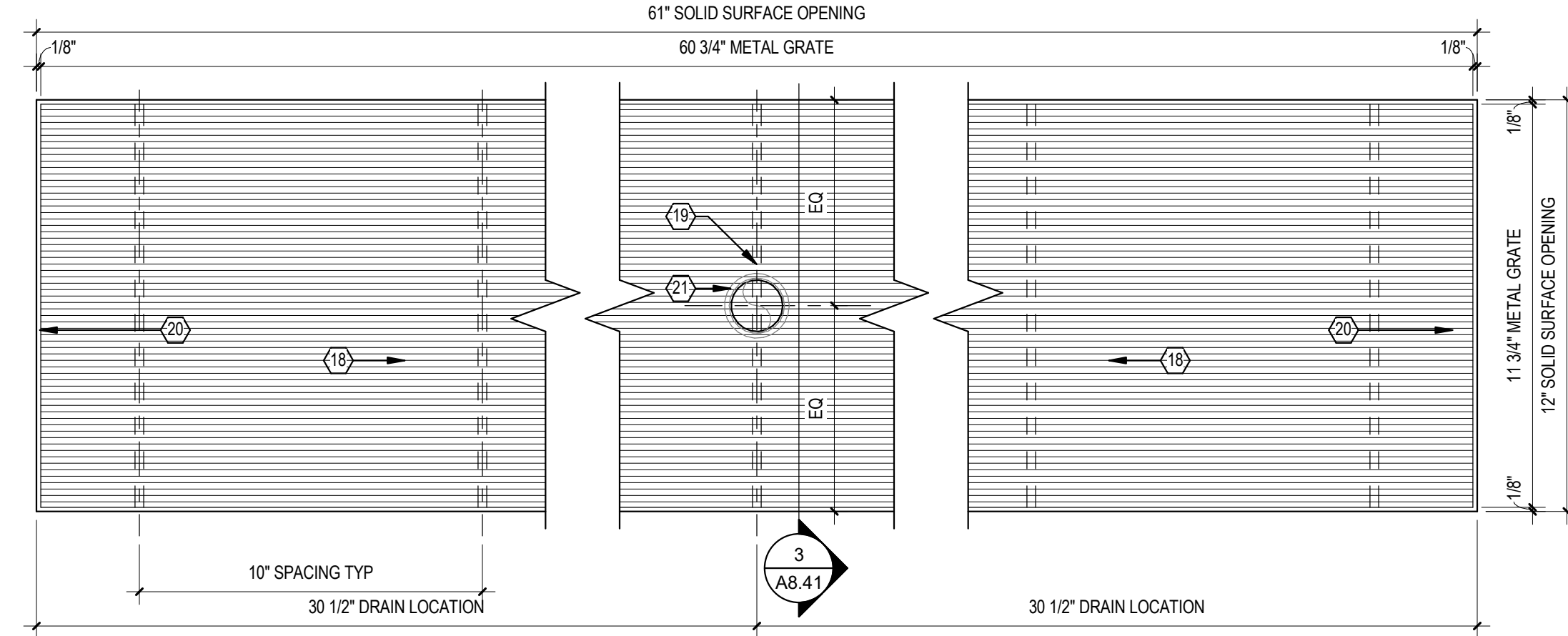
4 FOUNTAIN DRIP TRAY DETAIL 3" = 1'-0"



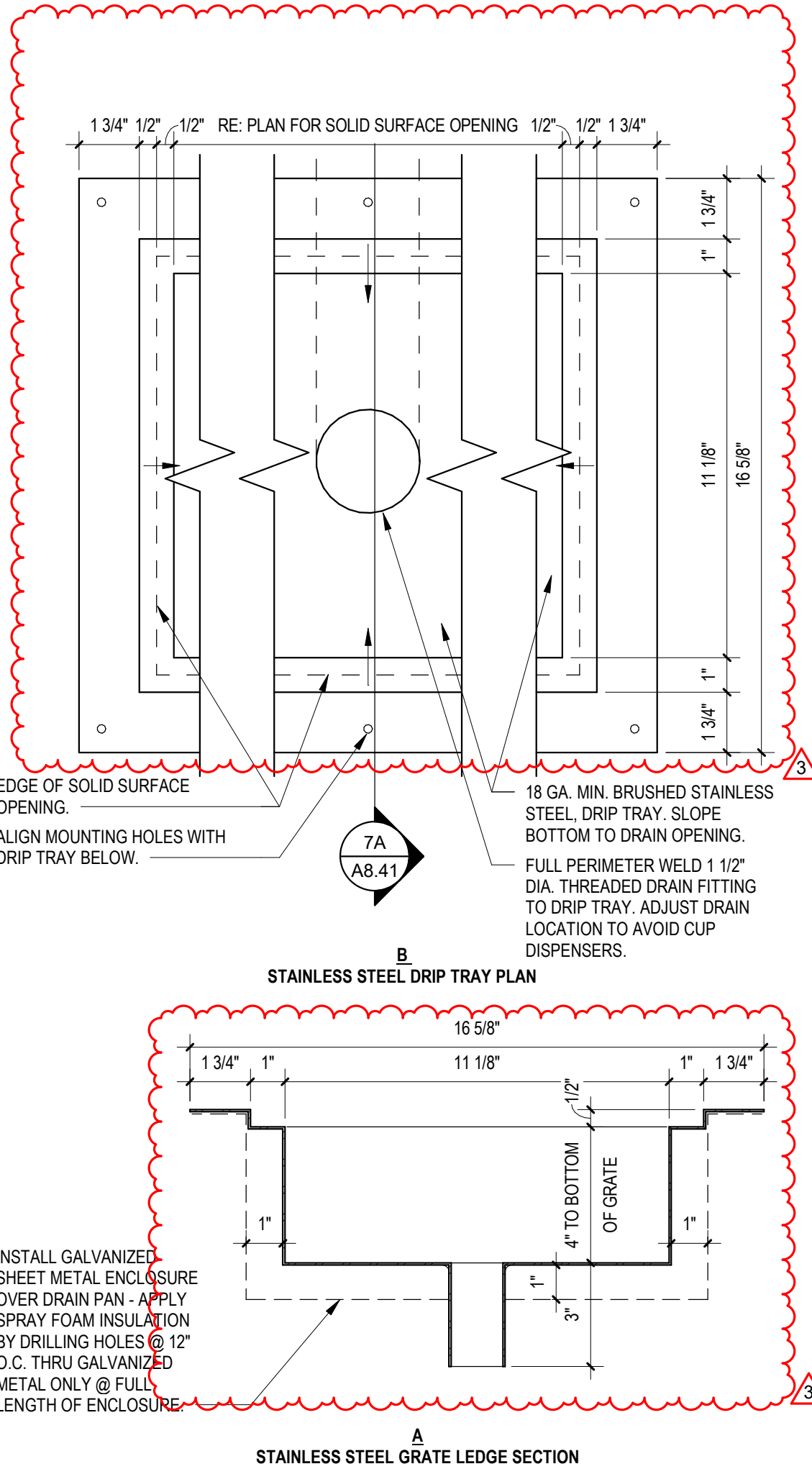
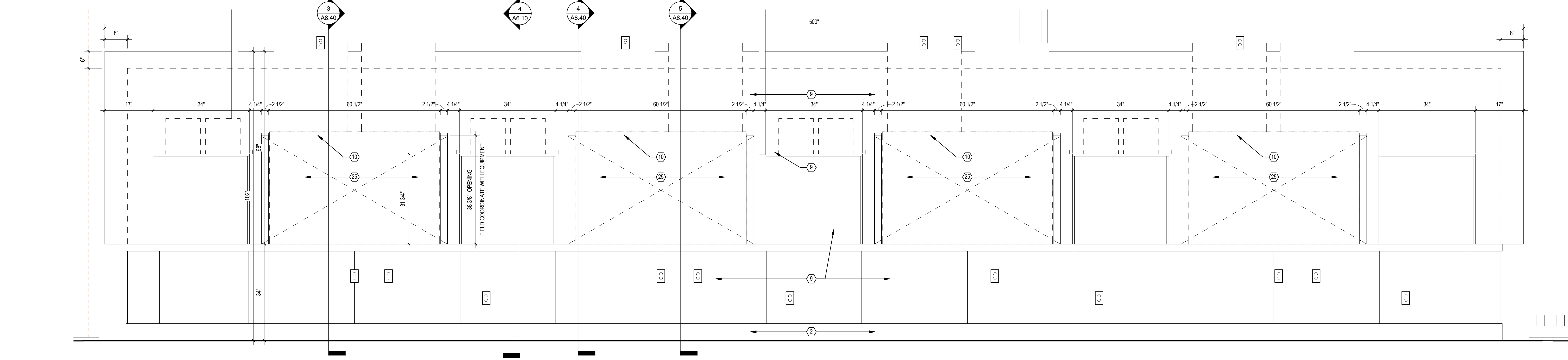
3 FOUNTAIN DRIP TRAY DETAIL 1 1/2" = 1'-0"



2 FOUNTAIN COUNTER - DRIP TRAY DETAIL 3" = 1'-0"



1 FOUNTAIN COUNTER - ELEVATION 3/4" = 1'-0"



7 ICEE DRIP TRAY DETAIL 3" = 1'-0"

MILLWORK NOTES / SCHEDULE

- GENERAL:
- MILLWORK TO BE INSTALLED AFTER TILE ON FLOOR.
 - SUPPLY ACCESS PANELS AS REQUIRED. FIELD VERIFY EXACT LOCATIONS.
 - WHERE APPLICABLE CABINETS WILL BE LINE BORES FOR ADJUSTABLE SHELVING.
 - ALL MILLWORK IN COFFEE, FOUNTAIN, AND ICEE AREAS SHALL BE CONSTRUCTED USING 18MM (3/4") KOMATEX INTEGRAL FOAM SHEETS UNLESS NOTED OTHERWISE.
 - PROVIDE 3/4" VERTICAL SUPPORTS IN BASE CABINETS CONT. FROM FRONT TO BACK @ 48" O.C. MAX.
 - MILLWORK ELEVATIONS, SECTIONS AND DETAILS ARE FOR GENERAL LAYOUT ONLY. FINAL MILLWORK DESIGN AND DRAWINGS SHALL BE PREPARED BY OTHERS. FINAL MILLWORK DESIGN AND DRAWINGS SHALL INCLUDE ANY ADDITIONAL STRUCTURAL STAINLESS STEEL SUPPORT FRAMES TO BE BUILT INTO THE CABINETS. FINAL MILLWORK DESIGN AND DESIGN DRAWINGS SHALL BE APPROVED BY OWNER'S REPRESENTATIVE.
 - COMBINED WEIGHTS OF THE EQUIPMENT ON THE COUNTER IS APPROXIMATELY 4,500 LBS.
 - EQUIPMENT LOCATIONS ARE FOR GENERAL LAYOUT ONLY. COORDINATE FINAL EQUIPMENT LOCATIONS WITH DRIP TRAYS AND OWNER'S REPRESENTATIVE.
- HARDWARE:
- HINGES: BLUM CLIP TOP BLUMOTION SOFT CLOSE, STEEL W/ POLISHED FINISH.
 - PULLS: HAFELE ALUMINUM HANDLE, DARK OIL-RUBBED BRONZE ITEM # 124.02.332
 - CATCHES: EPOC MAGNETIC
 - LED LIGHTS: HAFELE "LOOK" 12V STRIP
 - 1/4" PLEXI-GLASS INSERT 6"W X 30"L WITH ADJUSTABLE PARTITIONS
- COLORS:
- ALL SOLID SURFACE TO BE SSF-1, UNLESS OTHERWISE NOTED.
 - ALL LAMINATE AT EXTERIOR EXPOSED SURFACE AREAS TO RECEIVE PL-1, UNLESS OTHERWISE NOTED.
 - INTERIOR CABINETS EXPOSED SURFACES TO BE PL-3, UNLESS OTHERWISE NOTED.
- NOTE: FIELD VERIFY THE ABOVE FINISHES. CONFIRM WITH OWNER.

MILLWORK - KEYED NOTES

- WALL TILE & PATTERN AS SCHEDULED.
 - TILE BASE AS SCHEDULED. TILE ON MILLWORK TO MATCH ADJACENT FLOOR TILE.
 - SOLID SURFACE - BULLNOSE EDGES AT COUNTER TOPS FACING THE SALES FLOOR.
 - CUP, LID, AND STRAW DISPENSERS AS SCHEDULED.
 - MILLWORK DOOR WITH SCHEDULED HARDWARE.
 - COORDINATE HOLE AT CABINET PANELS FOR DRAIN PIPING. TYP.
 - SUPPORT NAILER AS NEEDED.
 - FIELD MEASURE FOR ACCESS PANELS AS NEEDED.
 - KOMATEX BOARD (WHITE).
 - NOTCH MILLWORK AROUND EQUIPMENT.
 - SUPPORTS AS REQUIRED.
 - FLAT SUPPORTS AS REQUIRED.
 - PROFILE OF TYPICAL CUP BOX INSIDE CABINET. ROTATE AND TURN AT CABINET DOOR ENTRY.
 - WHEN INSTALLING EQUIPMENT, GO TO ENSURE DISPENSER NOZLE DRIPS INTO THE DRAIN PAN.
 - REMOTE COOLING UNIT.
 - 16 GA STAINLESS STEEL PAN WITH DRAIN.
 - FIELD VERIFY DRAIN LOCATION.
 - SLOPE DRIP TRAY PAN TO DRAIN OPENING.
 - LOW POINT OF DRIP PAN.
 - HIGH POINT OF DRIP PAN.
 - DRAIN OPENING.
 - MAIN DRAIN LINE THROUGH CABINET WALL AND ROUT DIRECTLY TO FLOOR SKINN. RE: PLUMBING DRAWINGS.
 - FLOOR SINK RE: PLUMBING DRAWINGS.
 - WALL AS SCHEDULED.
 - OPENING FOR EQUIPMENT. FIELD VERIFY FINAL DIMENSION REQUIREMENTS WITH EQUIPMENT.
 - 8" DIAMETER TRASH HOLE WITH 3" DEEP PVC SLEEVE BELOW SOLID SURFACE COUNTER.
- NOT ALL NOTES ARE USED ON THIS SHEET



BUC-EE'S

A DEVELOPMENT OF

Buc-ee's Benton, LLC
Saline County, Arkansas

TEL: (979) 230-2920

BUC-EE'S TRAVEL CENTER
BENTON, ARKANSAS
74K - L - 2025 -Q1
INTERSTATE 30 & STATE HIGHWAY 229
BENTON, ARKANSAS 72019

LAWRENCE S. LEVINSON, A.I.A.

7800 Washington Ave., Suite 600 Houston, TX 77007
main: 713.600.3600 www.laarc.com

ISSUE/REVISION LOG:		
No.	DESCRIPTION	DATE
3	OWNER CHANGES	04/23/2025



04/23/2025

ISSUED FOR REVIEW:	04/26/2024
ISSUED FOR BID:	05/14/2024
ISSUED FOR PERMIT:	05/14/2024

Copyright 2024 Lawrence S. Levinson, AIA. Warning: This document is protected by U.S. Copyright Law Under Section 102 of the U.S. Copyright and the Architectural Works Copyright Protection Act of 1990. Unauthorized reproduction and distribution of this document or any portion of it, other than for use of the particular project, is prohibited and may result in severe civil and criminal penalties, and will be prosecuted to maximum extent possible under the law.

A8.41

MILLWORK DETAILS - FOUNTAIN COUNTER

LAARC PROJECT NUMBER: 2024-107.000

BENTON, ARKANSAS