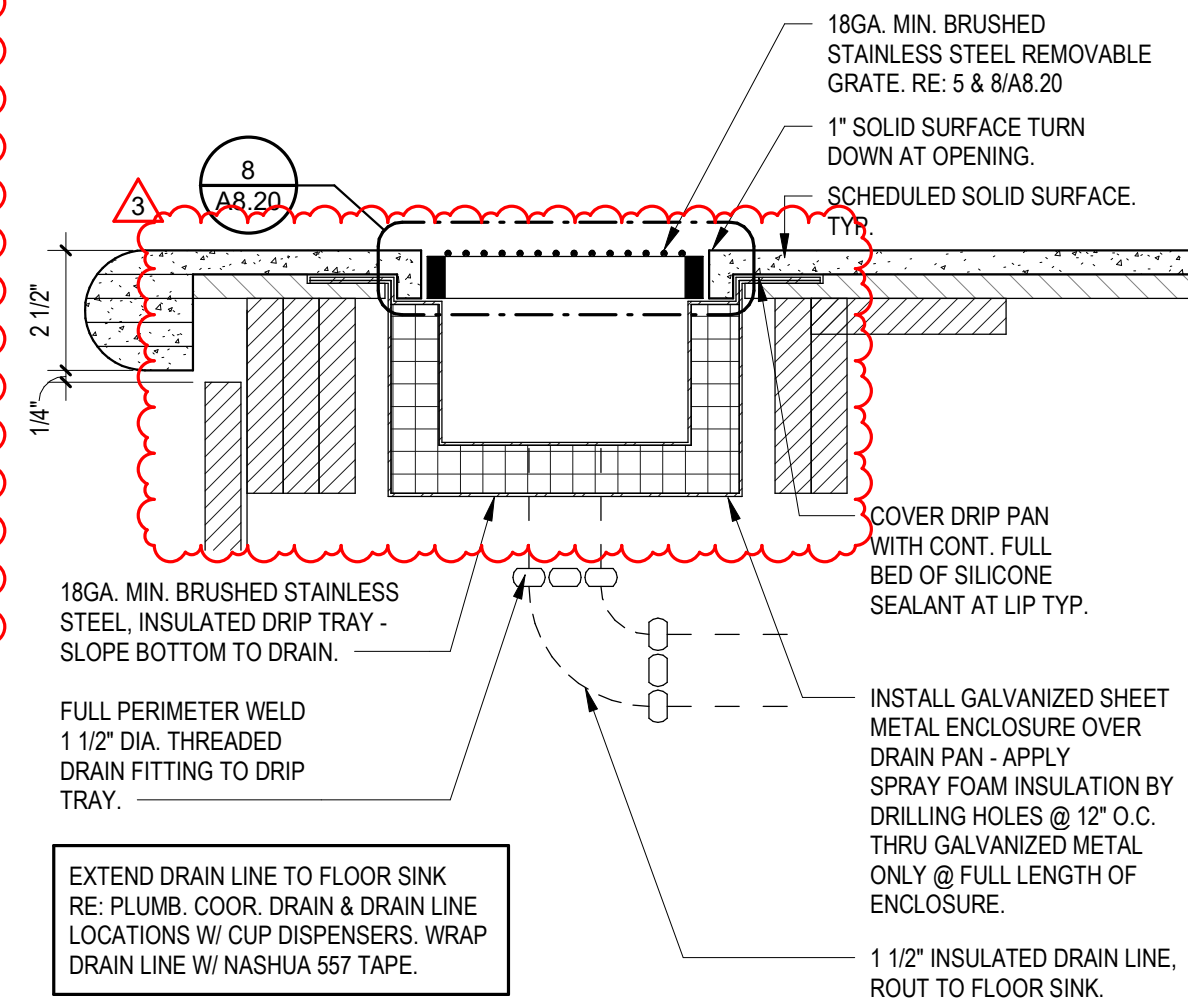
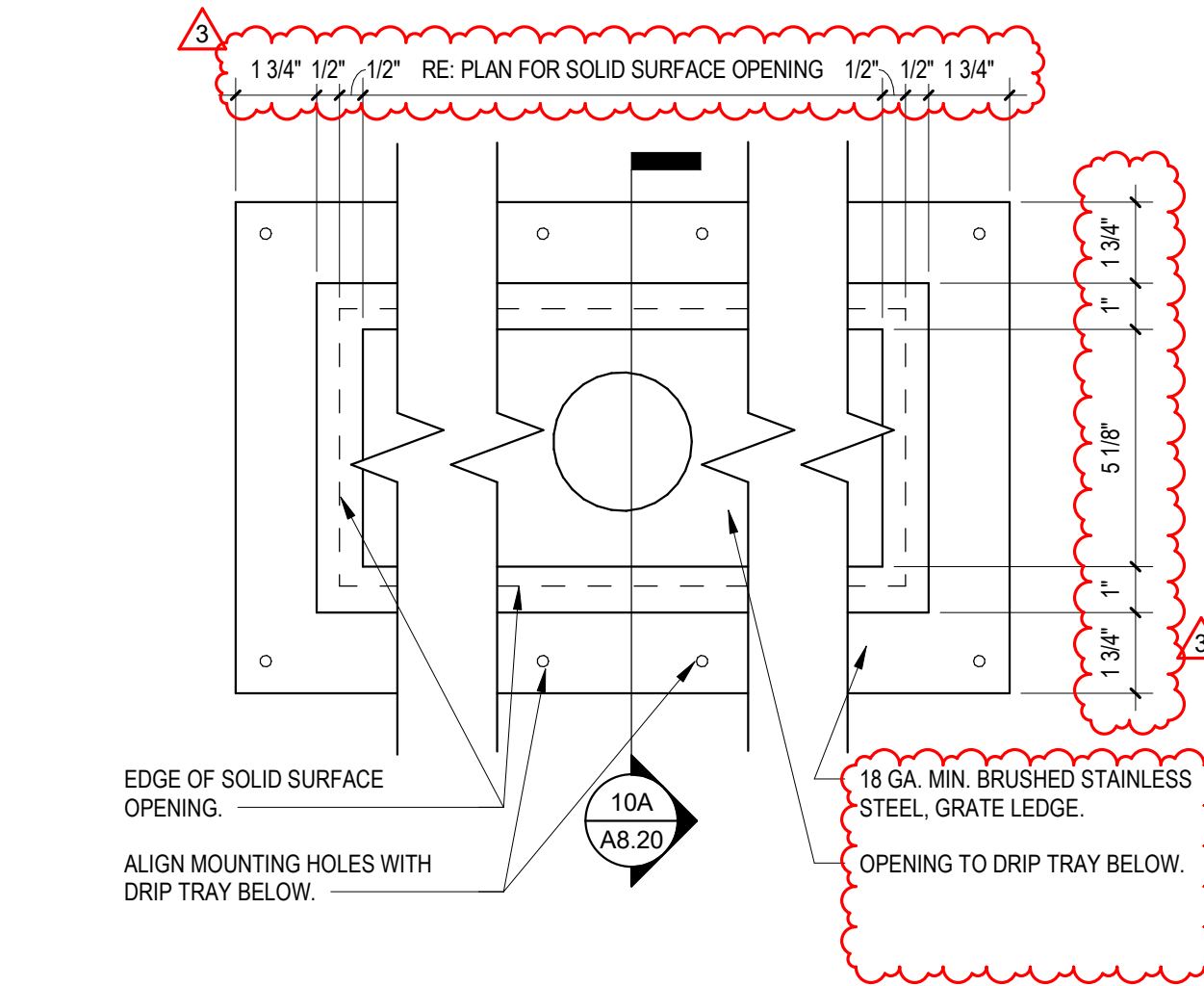


8 COFFEE DRIP TRAY GRATE 3" = 1'-0"



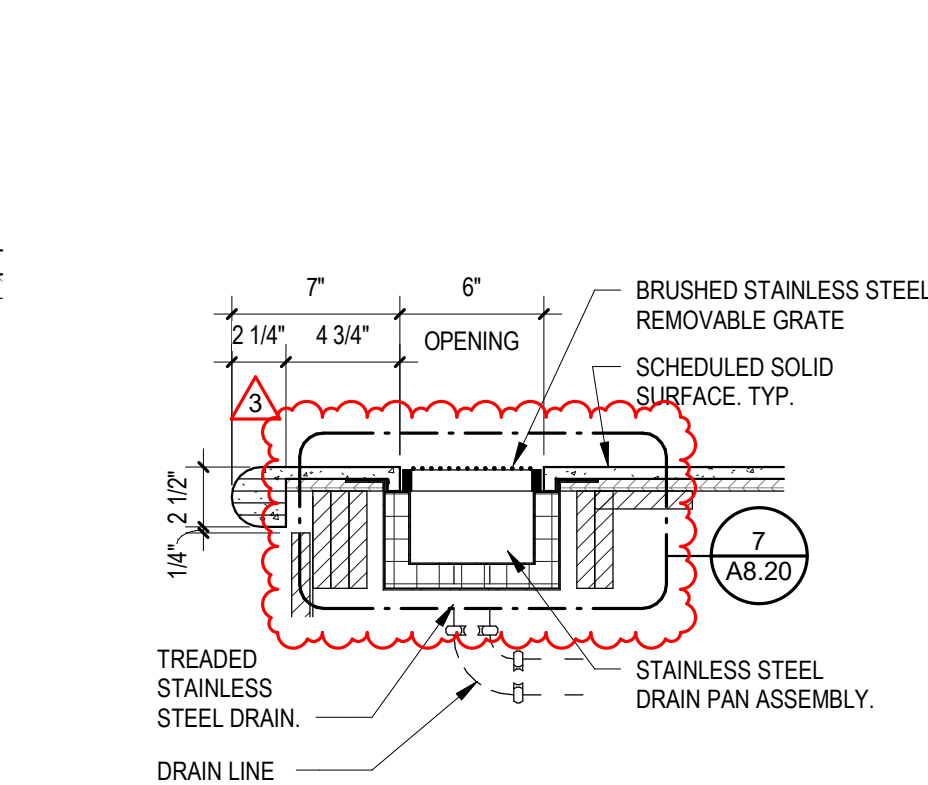
7 COFFEE DRIP TRAY DETAIL 3" = 1'-0"



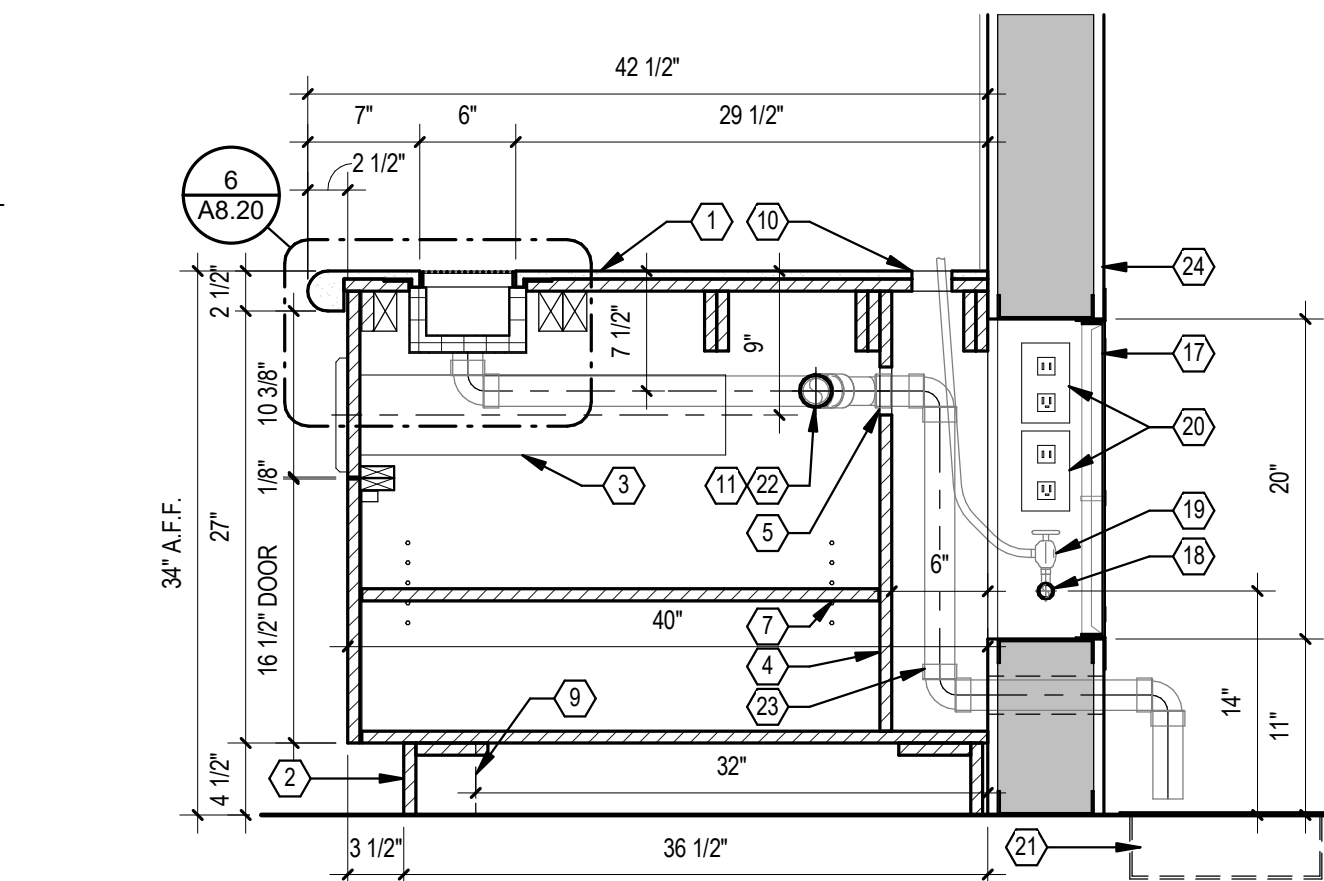
10 COFFEE DRIP TRAY DETAIL 3" = 1'-0"



5 COFFEE DRIP TRAY PLAN 1 1/2" = 1'-0"



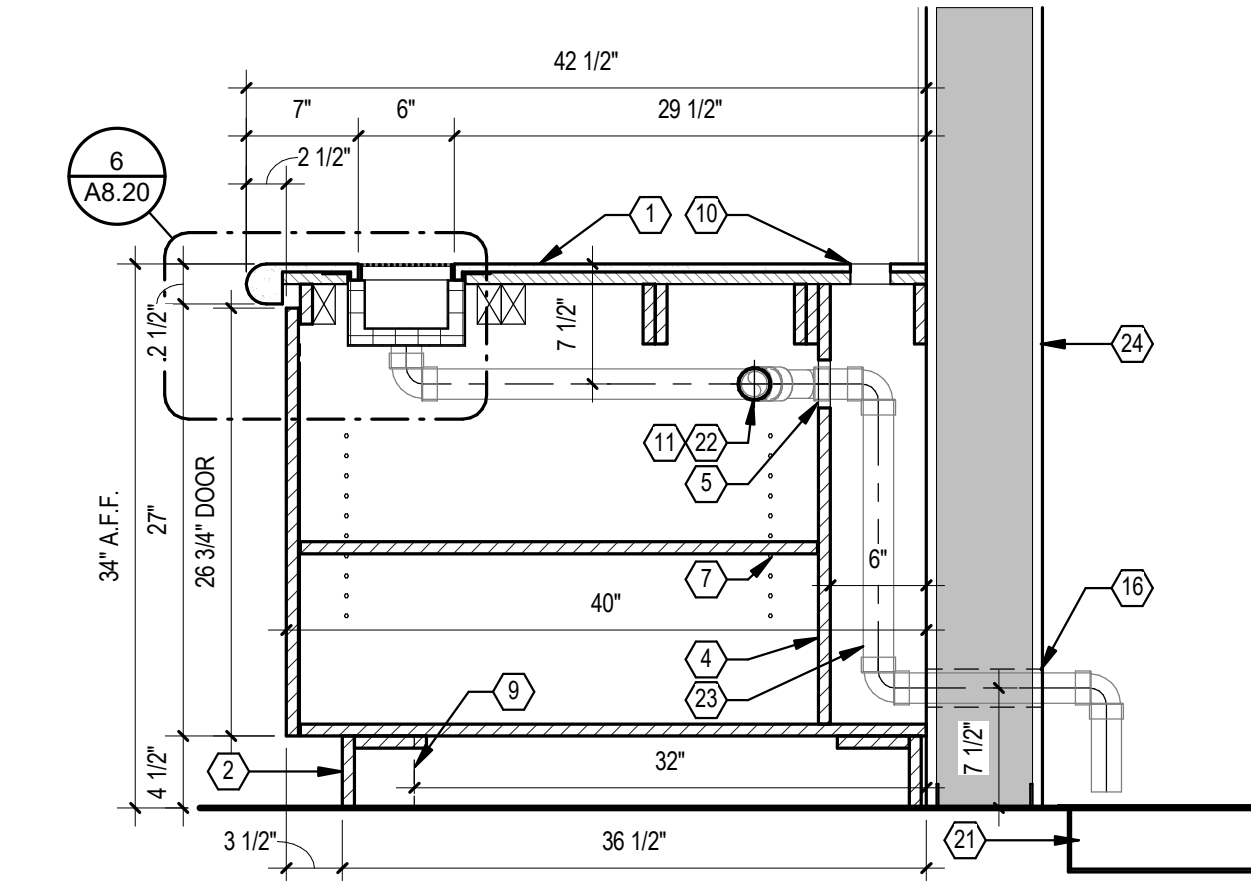
6 COFFEE DRIP TRAY DETAIL 1 1/2" = 1'-0"



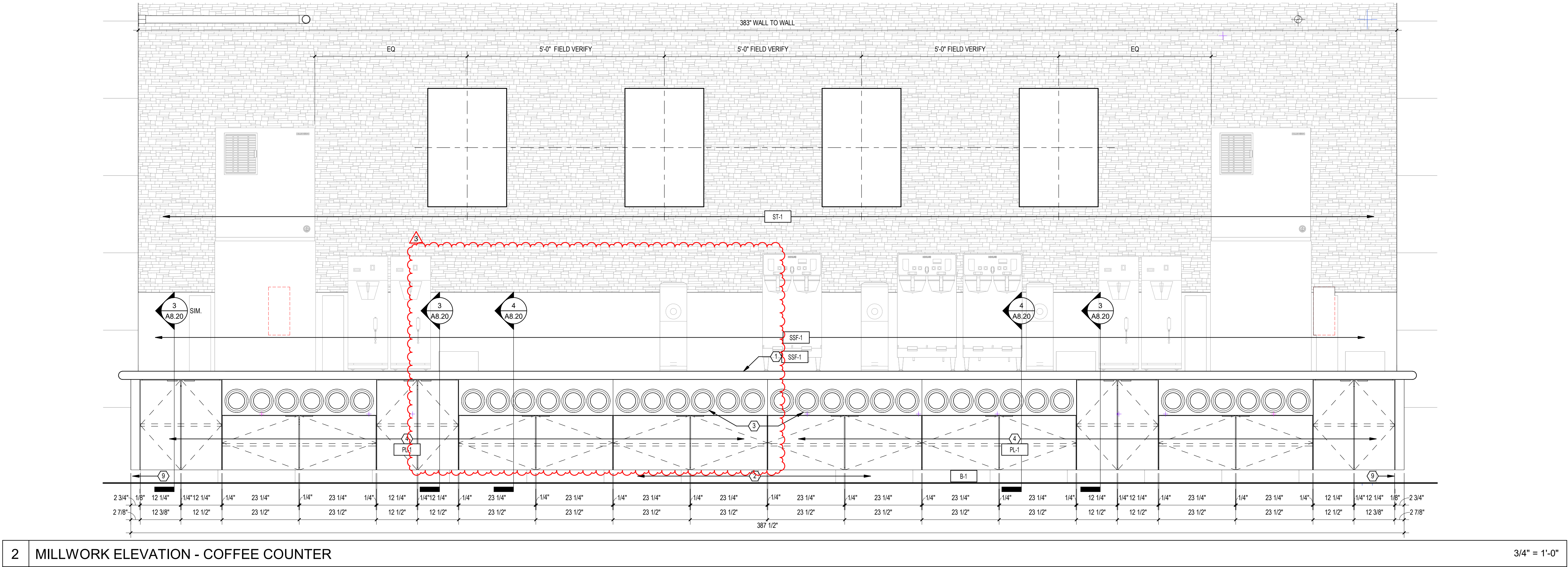
4 COFFEE COUNTER - SECTION 1" = 1'-0"

MILLWORK NOTES / SCHEDULE	
GENERAL:	
1.	MILLWORK TO BE INSTALLED AFTER TILE ON FLOOR.
2.	SUPPLY ACCESS PANELS AS REQUIRED. FIELD VERIFY EXACT LOCATIONS.
3.	WHERE APPLICABLE CABINETS WILL BE LINE BORES FOR ADJUSTABLE SHELVING.
4.	ALL MILLWORK IN COFFEE, FOUNTAIN, AND ICEE AREAS SHALL BE CONSTRUCTED USING 19MM (3/4" NOMINATE) INTEGRAL FORM SHEETS UNLESS NOTED OTHERWISE.
5.	PROVIDE 3/4" THK. VERTICAL SUPPORTS IN BASE CABINETS CONT. FROM FRONT TO BACK @ 48" O.C. MAX.
6.	MILLWORK ELEVATIONS, SECTIONS AND DETAILS ARE FOR GENERAL LAYOUT ONLY. FINAL MILLWORK DESIGN AND DESIGN DRAWINGS SHALL BE PREPARED BY OTHERS. FINAL MILLWORK DESIGN AND DRAWINGS SHALL INCLUDE ANY ADDITIONAL STRUCTURAL.
7.	STAINLESS STEEL SUPPORT FRAMES TO BE BUILT INTO THE CABINETS. FINAL MILLWORK DESIGN AND DESIGN DRAWINGS SHALL BE APPROVED BY OWNER'S REPRESENTATIVE.
8.	COMBINED WEIGHTS OF THE EQUIPMENT ON THE COUNTER IS APPROXIMATELY 4,500 LBS. EQUIPMENT LOCATIONS ARE FOR GENERAL LAYOUT ONLY. COORDINATE FINAL EQUIPMENT LOCATIONS WITH DRIP TRAYS AND OWNER'S REPRESENTATIVE.
HARDWARE:	
1.	HINGES: BLUM, CLIP TOP BLUMOTION SOFT CLOSE, STEEL W/ POLISHED FINISH.
2.	PULLS: HAFELE, ALUMINUM HANDLE, DARK OIL-RUBBED BRONZE ITEM # 124.02.332.
3.	CATCHES: EPICO MAGNETIC.
4.	LED LIGHTS: HAFELE, LOOK 12V STRIP.
5.	1/4" PLEXI-GLASS INSERT 6"Wx51X30"L WITH ADJUSTABLE PARTITIONS.
COLORS:	
1.	ALL SOLID SURFACE TO BE SSF-1 UNLESS OTHERWISE NOTED.
2.	LAMINATE AT EXTERIOR EXPOSED SURFACE AREAS TO RECEIVE PL-1, UNLESS OTHERWISE NOTED.
3.	INTERIOR CABINETS EXPOSED SURFACES TO BE PL-3, UNLESS OTHERWISE NOTED.
NOTE: FIELD VERIFY THE ABOVE FINISHES. CONFIRM WITH OWNER.	

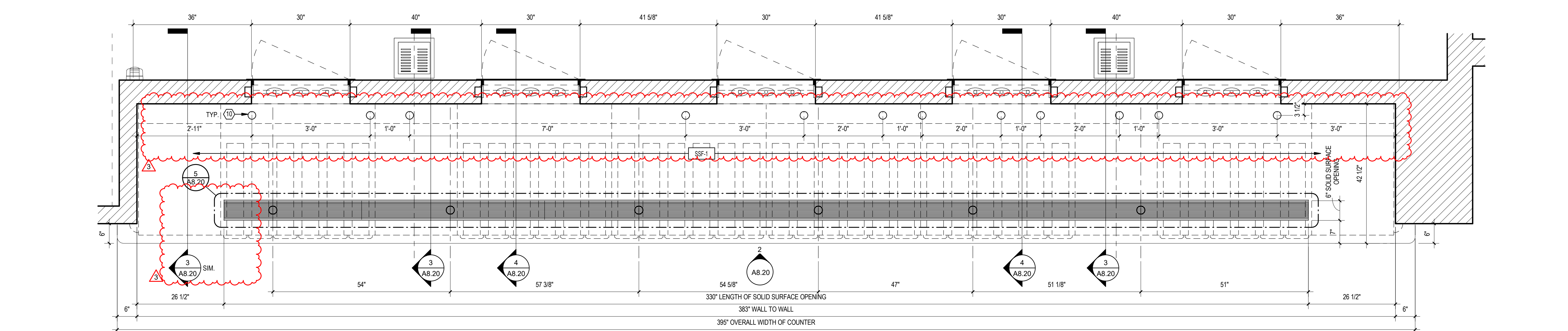
MILLWORK - KEYED NOTES	
1	SOLID SURFACE: W/ BULLNOSE EDGES
2	TILE BASE AS SCHEDULED.
3	CUP DISPENSER. RE: EQUIPMENT SCHEDULE
4	MILLWORK DOOR WITH SCHEDULED HARDWARE.
5	COORDINATE HOLE AT CABINET END PANELS FOR PVC DRAIN LINE TYP.
6	END PANEL CUT OUT BEYOND
7	3/4 x 3/4 SHELF STOP AT DIVIDER.
8	SUPPORT NAILER AS NEEDED.
9	MITER TOE KICK TO ADJACENT WALL.
10	2 3/8" TYP. GROMMET. FIELD DRILL AS CLOSE AS POSSIBLE AFTER WALL TILE INSTALLATION.
11	SLOPE DRAIN TRAY PAN TO DRAIN OPENING.
12	LOW POINT OF DRIP PAN.
13	HIGH POINT OF DRIP PAN.
14	DRAIN OPENING.
15	MAIN DRAIN LINE THRU WALL & FLOOR DRAIN - RE PLUMBING DRAWINGS.
16	ACCESS OPENING & STAINLESS STEEL ACCESS DOOR 20"H x 30"W ROUGH OPENING.
17	MAIN WATER SUPPLY LINE 1" A.F.F. REF. PLUMBING DRAWINGS.
18	(3) WATER VALVES AT ACCESS OPENING.
19	(4) ELECTRICAL DUPLEX AT SIDES OF ACCESS OPENING, MOUNT AT 18" A.F.F. - RE: ELEC. DWGS.
20	FLOOR SINK. RE: PLUMBING
21	DRAIN PIPE COLLECTOR LOCATION. AVOID ELECTRICAL AND WATER VALVES.
22	DRAIN PIPE COLLECTOR DROPS DOWN AT CHASE & CONTINUES THRU WALL TO FLOOR SINK.
23	METAL STUD WALL, AS SCHEDULED.
24	NOT USED.
NOT ALL NOTES ARE USED ON THIS SHEET.	



3 COFFEE COUNTER - SECTION 1" = 1'-0"



2 MILLWORK ELEVATION - COFFEE COUNTER 3/4" = 1'-0"



1 MILLWORK PLAN - COFFEE COUNTER 3/4" = 1'-0"



BUC-EE'S

A DEVELOPMENT OF

Buc-ee's Benton, LLC
Saline County, Arkansas

TEL: (979) 230-2920

BUC-EE'S TRAVEL CENTER
BENTON, ARKANSAS
74K - L - 2025 -Q1
INTERSTATE 30 & STATE HIGHWAY 229
BENTON, ARKANSAS 72019

LAWRENCE S. LEVINSON, A.I.A.

7800 Washington Ave., Suite 600 Houston, TX 77007
main: 713.600.3600 www.laarc.com

ISSUE/REVISION LOG:	
No.	DESCRIPTION
3	OWNER CHANGES



04/23/2025

ISSUED FOR REVIEW:	04/26/2024
ISSUED FOR BID:	05/14/2024
ISSUED FOR PERMIT:	05/14/2024

Copyright 2024 Lawrence S. Levinson, A.I.A. Warning: This document is protected by U.S. Copyright Law Under Section 102 of the U.S. Copyright and the Architectural Works Copyright Protection Act of 1990. Unauthorized reproduction and distribution of this document or any portion of it, other than for use of the particular project, is prohibited and may result in severe civil and criminal penalties, and will be prosecuted to maximum extent possible under the law.

A8.20

MILLWORK DETAILS - COFFEE COUNTER

LAARC PROJECT NUMBER: 2024-107.000

BENTON, ARKANSAS