

## MILLWORK NOTES / SCHEDULE

- GENERAL:**
1. MILLWORK TO BE INSTALLED AFTER TILE ON FLOOR.
  2. SUPPLY ACCESS PANELS AS REQUIRED. FIELD VERIFY EXACT LOCATIONS.
  3. WHERE APPLICABLE CABINETS WILL BE LINE BROS FOR ADJUSTABLE SHELVING. ALL MILLWORK IN OFFICE, FOUNTAIN, AND ICE AREAS SHALL BE CONSTRUCTED USING 3/4" (19.05) COMPOSITE INTERLOCKED PANELS UNLESS NOTED OTHERWISE.
  4. PROVIDE 34" THK. VERTICAL SUPPORTS FOR FRASE CABINETS' CON. FROM FRONT TO BACK @ 48" O.C. MAX.
  5. BAG RACKS ARE PROVIDED BY OWNER. INSTALLED BY CONTRACTOR.
  6. GROMMETS TO BE 2 3/8" VERTICAL VERGEMENT WITH HOOKS.
- HARDWARE:**
1. HINGES: BLUM, CLIP TUMBLATION STOP CLOSE. STEEL, W/ POLISHED FINISH.
  2. PL-1: HAFELE, ALUMINUM HANDLE, DARK OIL RUBBED BRONZE ITEM # 124.02.332
  3. CATCHES: EPOCH MAGNETIC
  4. LED LIGHTS: HAFELE, "LOCK" 12V 12W
  5. PL-14 PLEX-GLASS INSERT F50X10X1/2"X1/2"X1/2" WITH ADJUSTABLE PARTITIONS
- COLORS:**
1. ALL SOLID SURFACE TO BE 35F. - UNLESS OTHERWISE NOTED.
  2. ALL LAMINATE AT EXTERIOR EXPOSURE SURFACE AREAS TO RECEIVE PL-1 UNLESS OTHERWISE NOTED.
  3. INTERIOR CABINETS EXPOSURE SURFACES TO BE PL-3. UNLESS OTHERWISE NOTED.
- NOTE:** FIELD VERIFY THE ABOVE FINISHES. CONFIRM WITH OWNER.

## MILLWORK - KEYED NOTES

- (1) T-1 TILE AS SCHEDULED.
- (2) T-3 TILE AS SCHEDULED.
- (3) T-4 TILE AS SCHEDULED.
- (4) SOLID SURFACE W/ BULLNOSE EDGES
- (5) POWR WALL ASSEMBLY. CERAMIC TILE AS SCHEDULED, OVER 5/8" CEMENT BOARD, OVER 18 GA. MTL. STUD FRAMING @ 16" O.C.
- (6) CABLE CHASE BEYOND, PROVIDE 1/4 BEND OFFSETS IN CORNER CASE.
- (7) ACCESS PANEL
- (8) 12"x12" ACCESS PANEL
- (9) RAW PLYWOOD FOR TILE
- (10) GROMMET 2 3/8"
- (11) SCHEDULED SAFE
- (12) LINE OF CIGARETTE SHELVEING
- (13) EQUIPMENT. -- RE. SCHEDULE
- (14) DROP-IN REFRIGERATED COLD WELLS.
- (15) 8" DIAMETER TRASH HOLE WITH 3" DEEP PVC SLEEVE BELOW SOLID SURFACE COUNTER.
- (16) TRASH CAN, BY OTHERS.
- (17) 30-1/8"L x 6-1/2"H x 6-1/8" COVE FOR INSERTING TYPICAL
- (18) LED LIGHTING "LOOX" 12V STRETCH LIGHTING TYP.
- (19) 1/4" PLEXI-GLASS INSERT 60Dx9Hx30FL W/ ADJUSTABLE PARTITIONS TYP. 6 / A8.00
- (20) 1/4"x8" ROUTED OPEN AIR VENTS
- (21) FLOOR SINK RE: PLUMBING
- (22) PROVIDE ACCESS PANEL FOR FLOOR SINK IN THE FIELD. V.I.F. AND COORDINATE AS REQUIRED.
- (23) 1-1/2" RADIUS @ ALL CORNERS
- (24) COMXP NATIONAL CAM LOCK, ITEM C8053-14A, KEYING TO C415A W/ D8783 BLANK
- (25) MILLWORK DOOR WITH SCHEDULED HARDWARE.
- (26) 3/8" x 16" ROUTED OPEN AIR VENTS @ 1-1/4" SPACING.
- (27) DOORS AT ONE SIDE FACING DEL WITH SCHEDULED HARDWARE.
- (28) REMOVABLE MILLWORK INSERT. FUTURE SAFE LOCATION.
- (29) DRAWER PULLS. HAFELE, DARK OIL-RUBBED BRONZE, ITEM 116.07.319 @ FILE CABINET ONLY.
- (30) DOVETAIL JOINTS AT DRAWER CORNERS.
- (31) SOFT CLOSE CABINET DRAWER GUIDES, KNAPE-VOGT MODEL G88650.
- (32) SCHEDULED LAMINATE ON EXTERIOR OF CABINET AND PL-3 ON INTERIOR OF CABINET.
- (33) HANGING FOLDER RAIL, FULL LENGTH OF DRAWER.
- (34) EMERGENCY FUEL SHUT OFF. ONLY AT CASHIER 5. RE: FUEL SYSTEM DRAWINGS.
- (35) 12"x4" STAINLESS STEEL SURFACE MOUNTED LOUVERED VENT.
- (36) ALUMINUM ROUNDED BULL NOSE TRIM AS SCHEDULED. TYP @ ALL TILED MILLWORK CORNERS.

NOT ALL NOTES ARE USED ON THIS SHEET



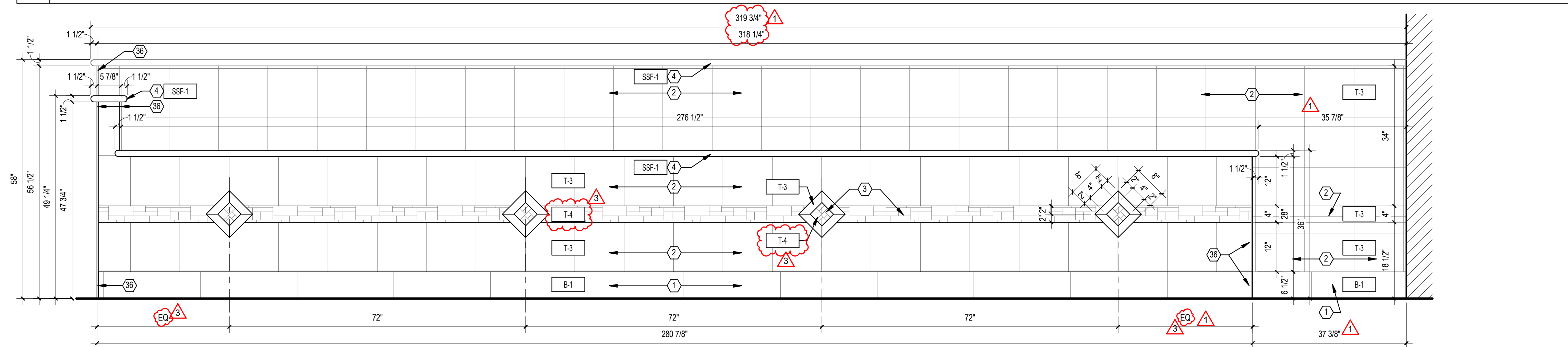
**BUC-EE'S**

## A DEVELOPMENT OF

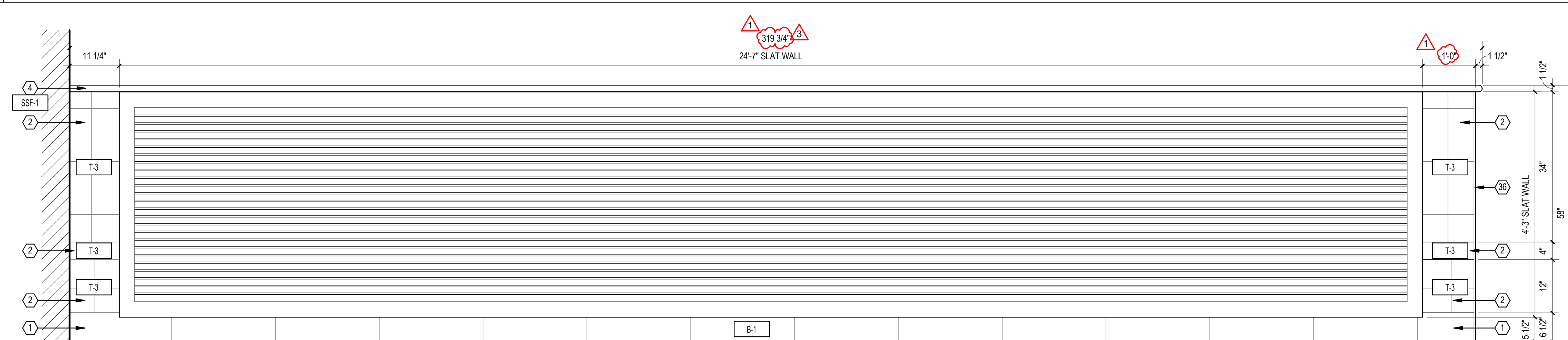
Buc-ee's Benton, LLC  
Saline County, Arkansas

TEL: (979) 230-2920

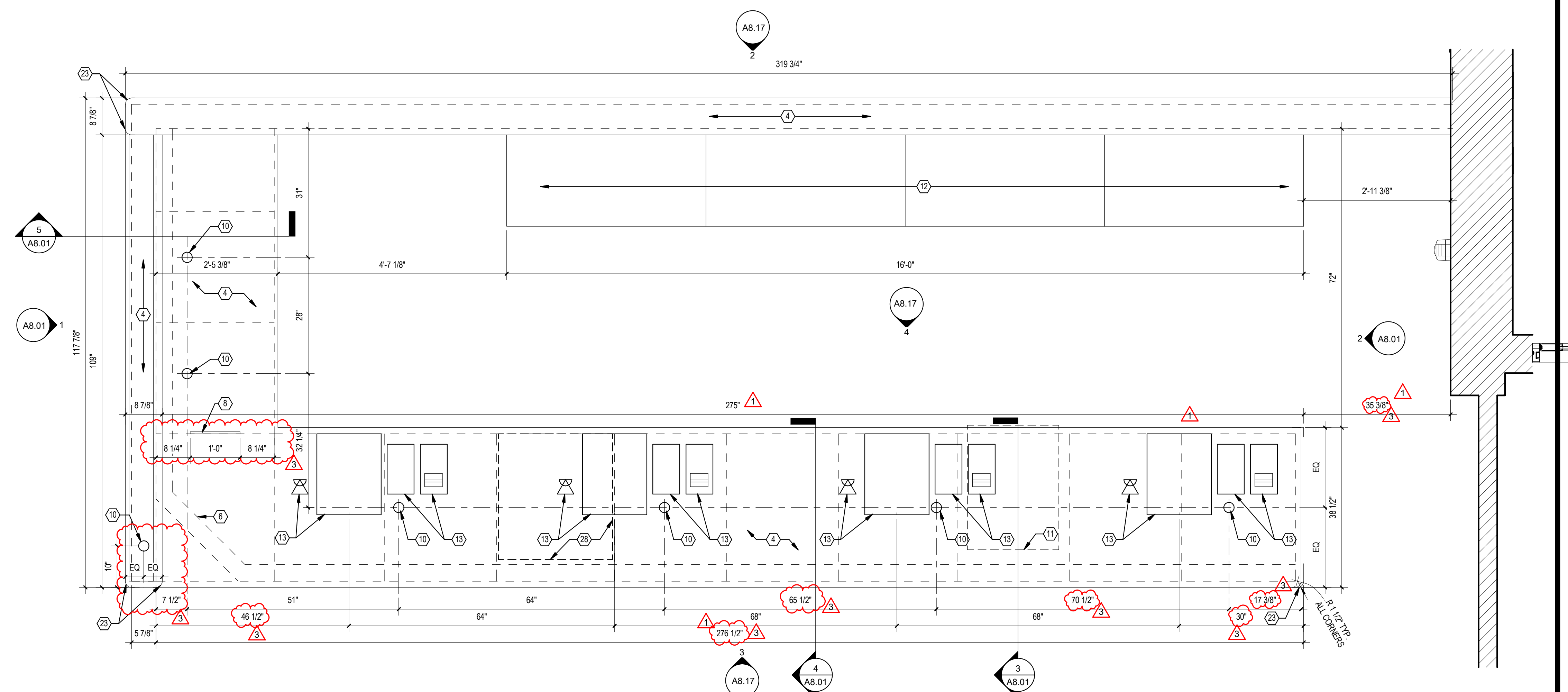
4 CASHIER COUNTER 8 - ELEVATION



3	CASHIER COUNTER 8 - ELEVATION
---	-------------------------------



2	CASHIER COUNTER 8 - ELEVATION
---	-------------------------------



1	CASHIER COUNTER 8 - PLAN
---	--------------------------

$$\frac{3}{4}'' = 1'-0''$$

LAWRENCE S.  
LEVINSON, A.I.A.

7800 Washington Ave., Suite 600  
main: 713.600.3600

Houston, TX 77007  
www.laarc.com

ISSUE/REVISION LOG:

No.	DESCRIPTION	DATE
1	OWNER CHANGES	09/09/2024
3	OWNER CHANGES	04/23/2025

[illegible]

04/23/2025

ISSUED FOR REVIEW:	04/26/2024
ISSUED FOR BID:	05/14/2024
ISSUED FOR PERMIT:	05/14/2024

Copyright 2024 Lawrence S. Levinson, AIA. Warning: This document is protected by U.S. Copyright Law Under Section 102 of the U.S. Copyright and the Architectural Works Copyright Protection Act of 1990. Unauthorized reproduction and distribution of this document or any portion of it, other than for use of this particular project, is prohibited and may result in severe civil and criminal penalties, and will prosecute to maximum extent possible under the law.

## A8.17

MILLWORK DETAILS -  
CASHIER COUNTER 8

LAARC PROJECT NUMBER: 2024-107.000

BENTON, ARKANSAS