

## MILLWORK NOTES / SCHEDULE

### GENERAL:

- MILLWORK TO BE INSTALLED AFTER TILE ON FLOOR.
- SUPPLY ACCESS PANELS AS REQUIRED. FIELD VERIFY EXACT LOCATIONS.
- WHERE APPLICABLE CABINETS WILL BE LINE BORES FOR ADJUSTABLE SHELVING.
- ALL MILLWORK IN COFFEE, FOUNTAIN, AND ICEE AREAS SHALL BE CONSTRUCTED USING 19MM (3/4") "KOMATEX" INTEGRAL FOAM SHEETS UNLESS NOTED OTHERWISE.
- PROVIDE 3/4" THK VERTICAL SUPPORTS IN BASE CABINETS CONT. FROM FRONT TO BACK @ 48" O.C. MAX.
- BAG RACKS ARE PROVIDED BY OWNER. INSTALLED BY CONTRACTOR. GROMMETS TO BE 2 3/8". VERIFY PLACEMENT WITH OWNER.
- HARDWARE:

- HINGES: BLUM, CLIP TOP BUMOTION SOFT CLOSE. STEEL W/ POLISHED FINISH.
- PULLS: HAFELE, ALUMINUM HANDLE, DARK OIL-RUBBED BRONZE ITEM # 124.02.332
- CATCHES: EPCO MAGNETIC
- LED LIGHTS: HAFELE, "LOOK" 12V STRIP
- 1/4" PLEXI-GLASS INSERT 6'X5'X3/8" WITH ADJUSTABLE PARTITIONS

### COLORS:

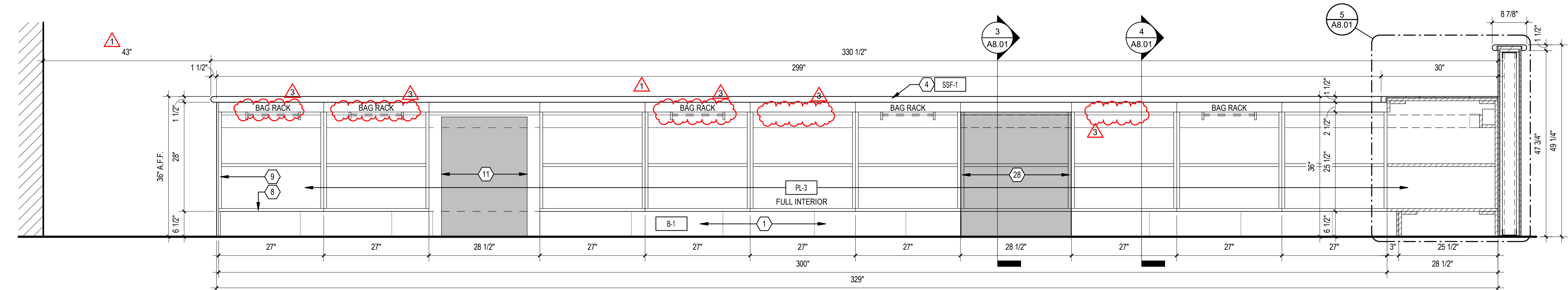
- ALL SOLID SURFACE TO BE SSF-1, UNLESS OTHERWISE NOTED.
- ALL LAMINATE AT EXTERIOR EXPOSED SURFACE AREAS TO RECEIVE PL-1, UNLESS OTHERWISE NOTED.
- INTERIOR CABINETS EXPOSED SURFACES TO BE PL-3, UNLESS OTHERWISE NOTED.

NOTE: FIELD VERIFY THE ABOVE FINISHES. CONFIRM WITH OWNER.

## MILLWORK - KEYED NOTES

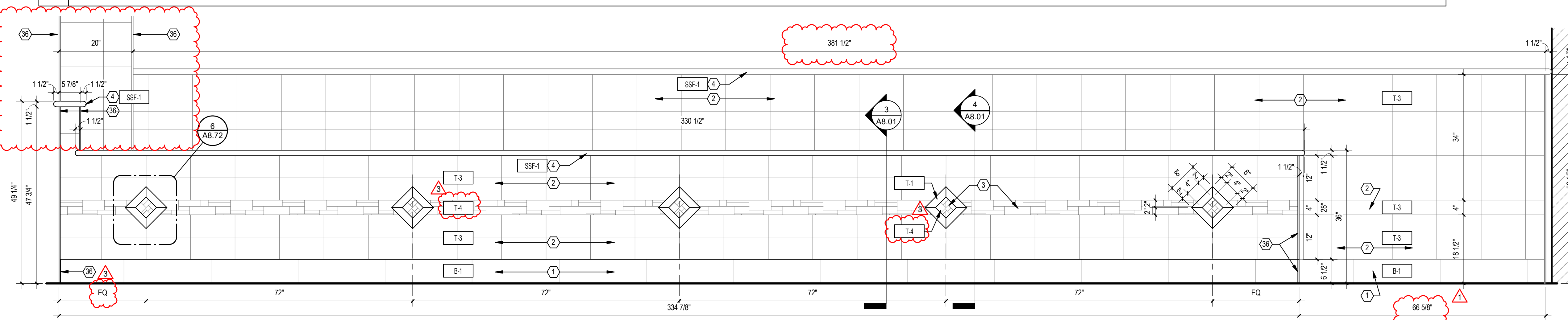
- T-1 TILE AS SCHEDULED.
- T-3 TILE AS SCHEDULED.
- T-4 TILE AS SCHEDULED.
- SOLID SURFACE- W/ BULLNOSE EDGES
- PONY WALL ASSEMBLY. CERAMIC TILE AS SCHEDULED, OVER 5/8" CEMENT BOARD, OVER 18 GA. MTL. STUD FRAMING @ 16" O.C.
- CABLE CHASE BEYOND, PROVIDE 1/4 BEND OFFSETS IN CORNER CASE.
- ACCESS PANEL
- 12"x12" ACCESS PANEL
- RAW PLYWOOD FOR TILE
- GROMMET 2 3/8"
- SCHEDULED SAFE
- LINE OF CIGARRETTE SHELVING
- EQUIPMENT. - RE SCHEDULE
- DROP-IN REFRIGERATED COLD WELLS.
- 8" DIAMETER TRASH HOLE WITH 3" DEEP PVC SLEEVE BELOW SOLID SURFACE COUNTER.
- TRASH CAN, BY OTHERS.
- 30-1/8"L x 6-1/2"H x 6-1/8"D COVE FOR INSERT TYPICAL.
- LED LIGHTING "LOOK" 12V STRIP LIGHTING TYP.
- 1/4" PLEXI-GLASS INSERT 6'Dx8'Hx3/8'L W/ ADJUSTABLE PARTITIONS TYP. 6 / A8.00
- 1/4"x8" ROUTED OPEN AIR VENTS
- FLOOR SINK RE PLUMBING
- PROVIDE ACCESS PANEL FOR FLOOR SINK IN THE FIELD. V.I.F. AND COORDINATE AS REQUIRED.
- 1-1/2" RADIUS @ ALL CORNERS
- COMPX NATIONAL CAM LOCK, ITEM C8053-14A, KEYING TO C415A W/ D8783 BLANK.
- MILLWORK DOOR WITH SCHEDULED HARDWARE.
- 3/8" x 16" ROUTED OPEN AIR VENTS @ 1-1/4" SPACING.
- DOORS AT ONE SIDE FACING DELI, WITH SCHEDULED HARDWARE.
- REMOVABLE MILLWORK INSERT. FUTURE SAFE LOCATION.
- DRAWER PULLS. HAFELE, DARK OIL-RUBBED BRONZE. ITEM 116.07.319 @ FILE CABINET ONLY.
- DOVETAIL JOINTS AT DRAWER CORNERS.
- SOFT CLOSE CABINET DRAWER GUIDES, KNAPE-VOGT MODEL GS8850.
- SCHEDULED LAMINATE ON EXTERIOR OF CABINET AND PL-3 ON INTERIOR OF CABINET.
- HANGING FOLDER RAIL. FULL LENGTH OF DRAWER.
- EMERGENCY FUEL SHUT OFF. ONLY AT CASHIER 5. RE: FUEL SYSTEM DRAWINGS.
- 12"x4" STAINLESS STEEL SURFACE MOUNTED LOUVERED VENT.
- ALUMINUM ROUNDED BULL NOSE TRIM AS SCHEDULE. TYP @ ALL TILED MILLWORK CORNERS.

NOT ALL NOTES ARE USED ON THIS SHEET



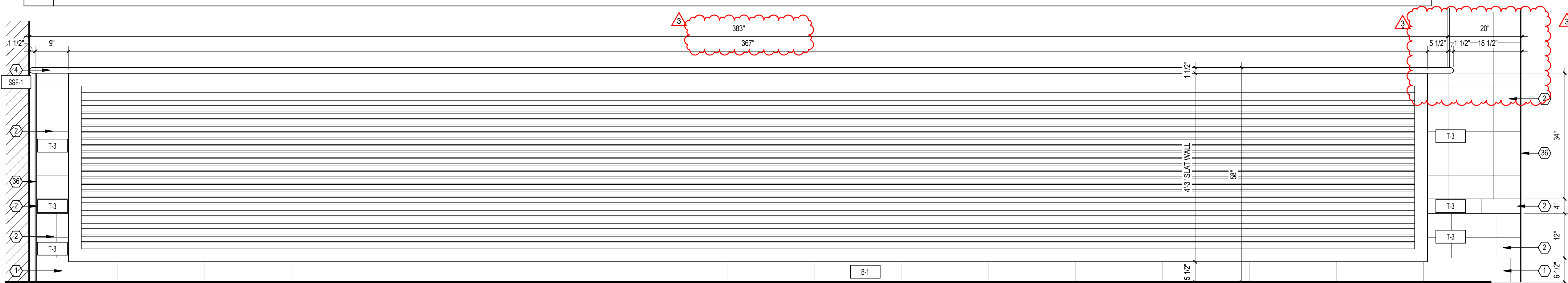
4 CASHIER COUNTER 6 - ELEVATION 4

3/4" = 1'-0"



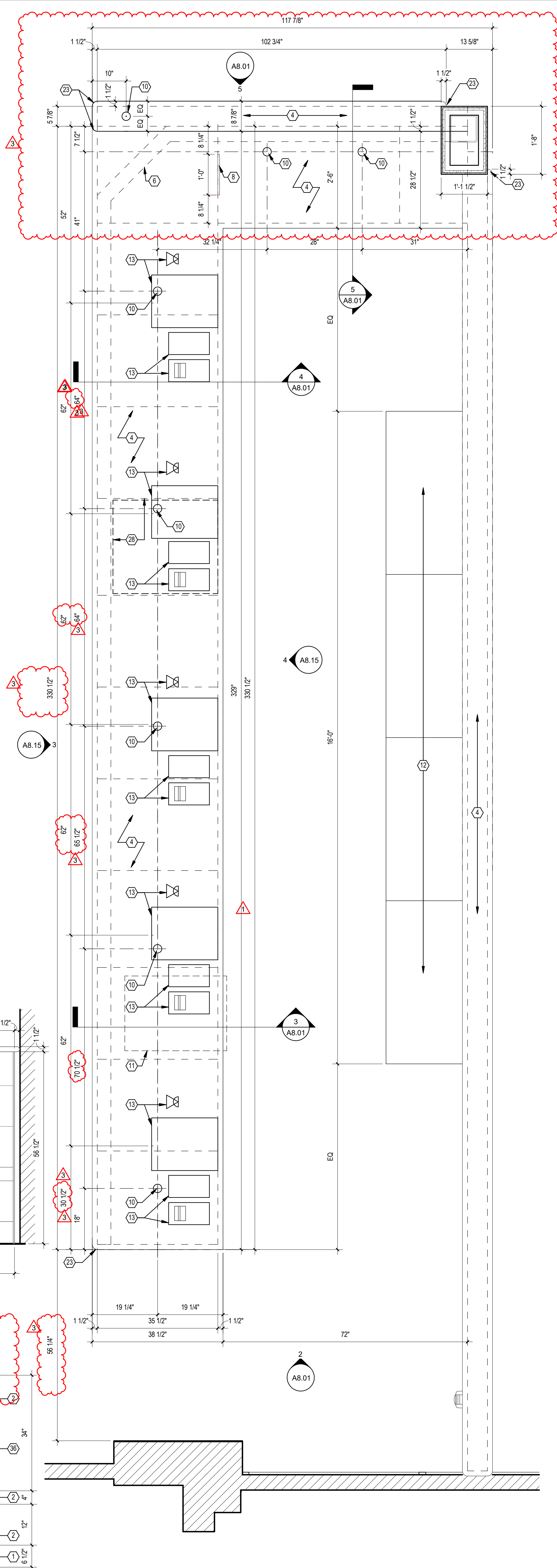
3 CASHIER COUNTER 6 - ELEVATION

3/4" = 1'-0"



2 CASHIER COUNTER 6 - ELEVATION

3/4" = 1'-0"



1 MILLWORK PLAN - CASHIER COUNTER 6

3/4" = 1'-0"



**BUC-EE'S**

A DEVELOPMENT OF

Buc-ee's Benton, LLC  
Saline County, Arkansas

TEL: (979) 230-2920

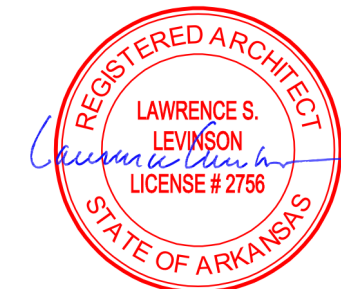
**BUC-EE'S TRAVEL CENTER**  
**BENTON, ARKANSAS**  
**74K - L - 2025 -Q1**  
**INTERSTATE 30 & STATE HIGHWAY 229**  
**BENTON, ARKANSAS 72019**

**LAWRENCE S. LEVINSON, A.I.A.**

7800 Washington Ave., Suite 600 Houston, TX 77007  
main: 713.600.3600 www.laarc.com

### ISSUE/REVISION LOG:

No.	DESCRIPTION	DATE
1	OWNER CHANGES	09/09/2024
3	OWNER CHANGES	04/23/2025



04/23/2025

ISSUED FOR REVIEW: 04/26/2024

ISSUED FOR BID: 05/14/2024

ISSUED FOR PERMIT: 05/14/2024

Copyright 2024 Lawrence S. Levinson, AIA. Warning: This document is protected by U.S. Copyright Law Under Section 102 of the U.S. Copyright and the Architectural Works Copyright Protection Act of 1990. Unauthorized reproduction and distribution of this document or any portion of it, other than for use of the particular project, is prohibited and may result in severe civil and criminal penalties, and will be prosecuted to maximum extent possible under the law.

**A8.15**

**MILLWORK DETAILS - CASHIER COUNTER 6**

LAARC PROJECT NUMBER: 2024-107.000

**BENTON, ARKANSAS**