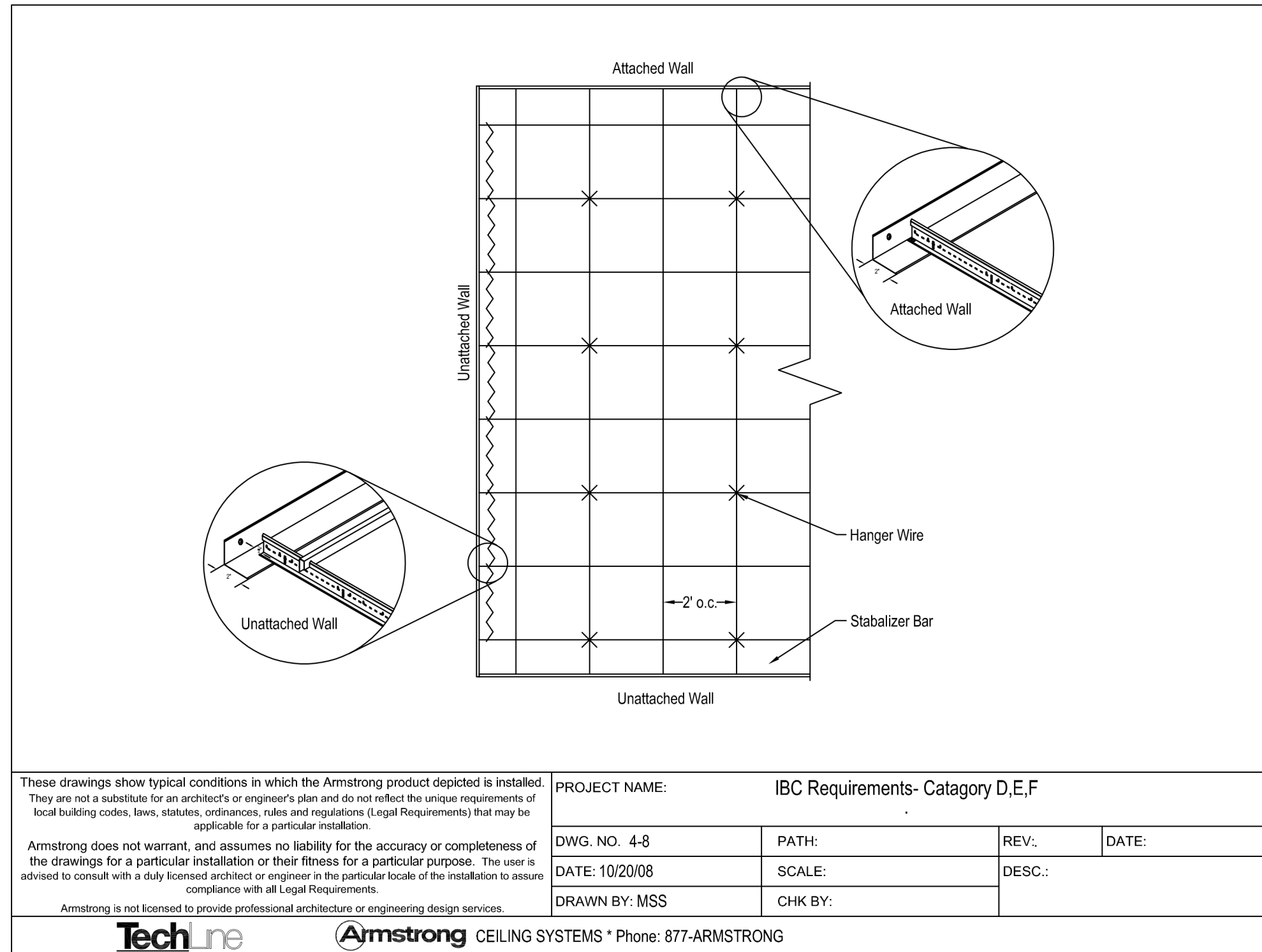
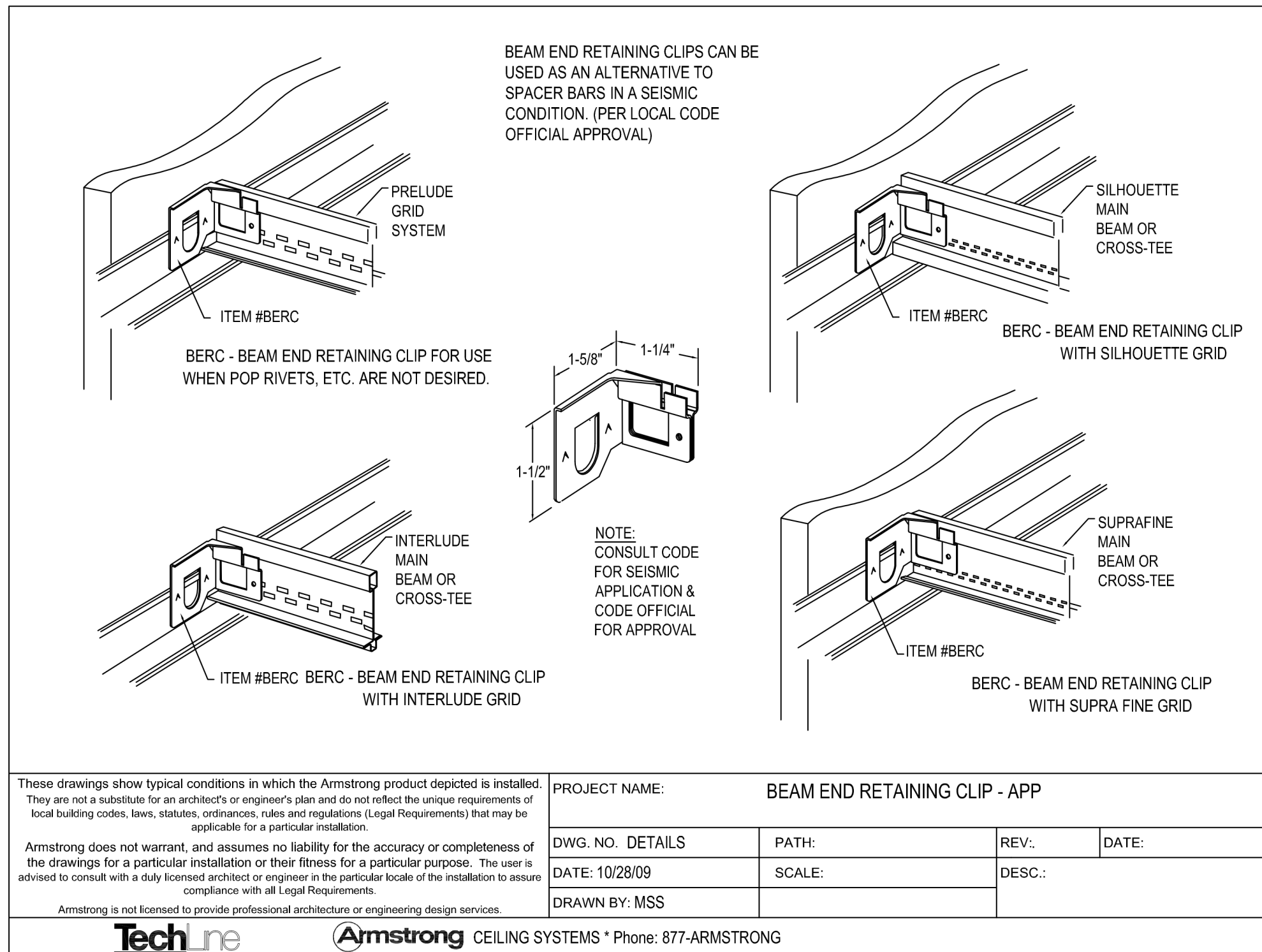
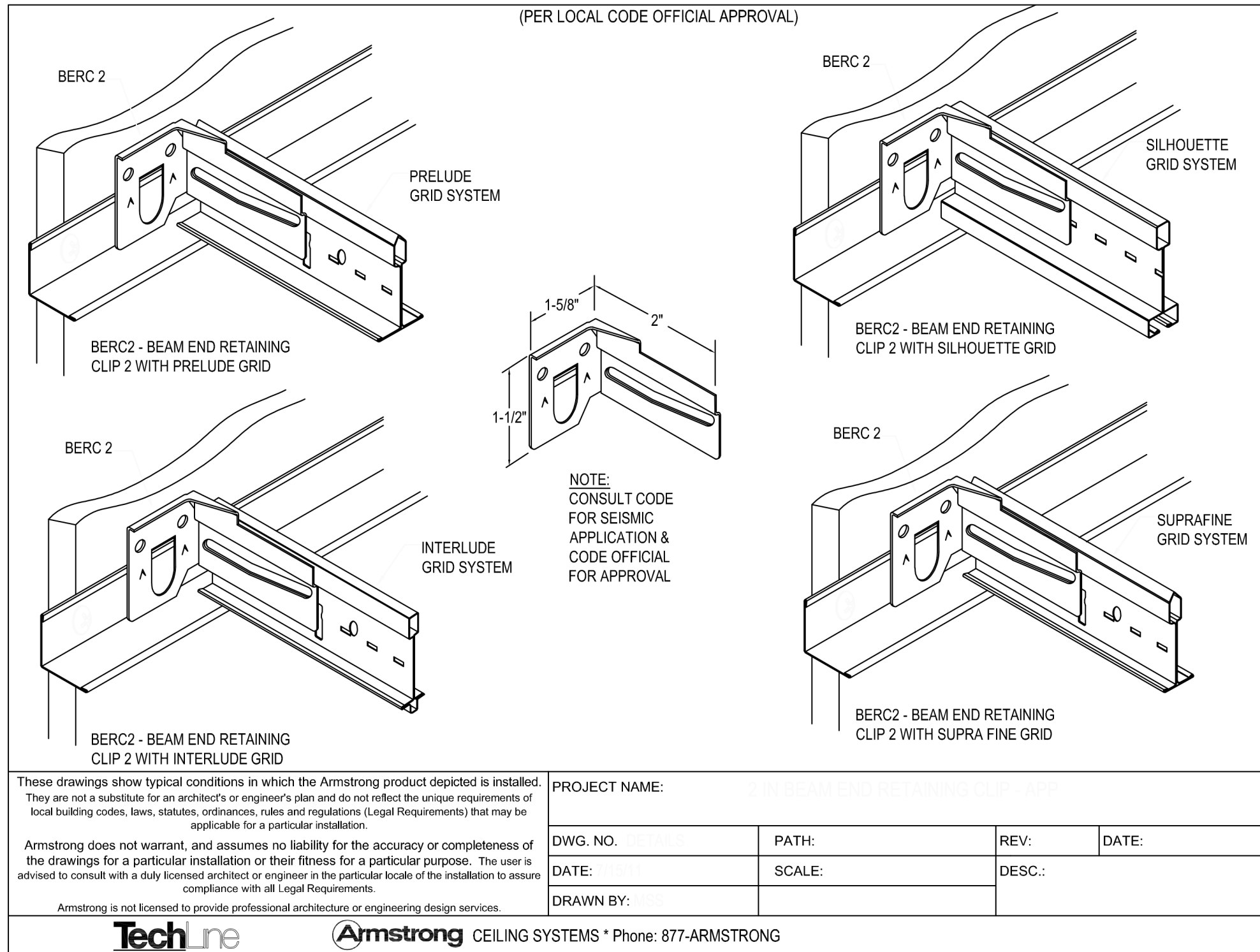


9 SEISMIC CEILING GRID DETAIL NTS

8 SEISMIC CEILING GRID DETAIL NTS

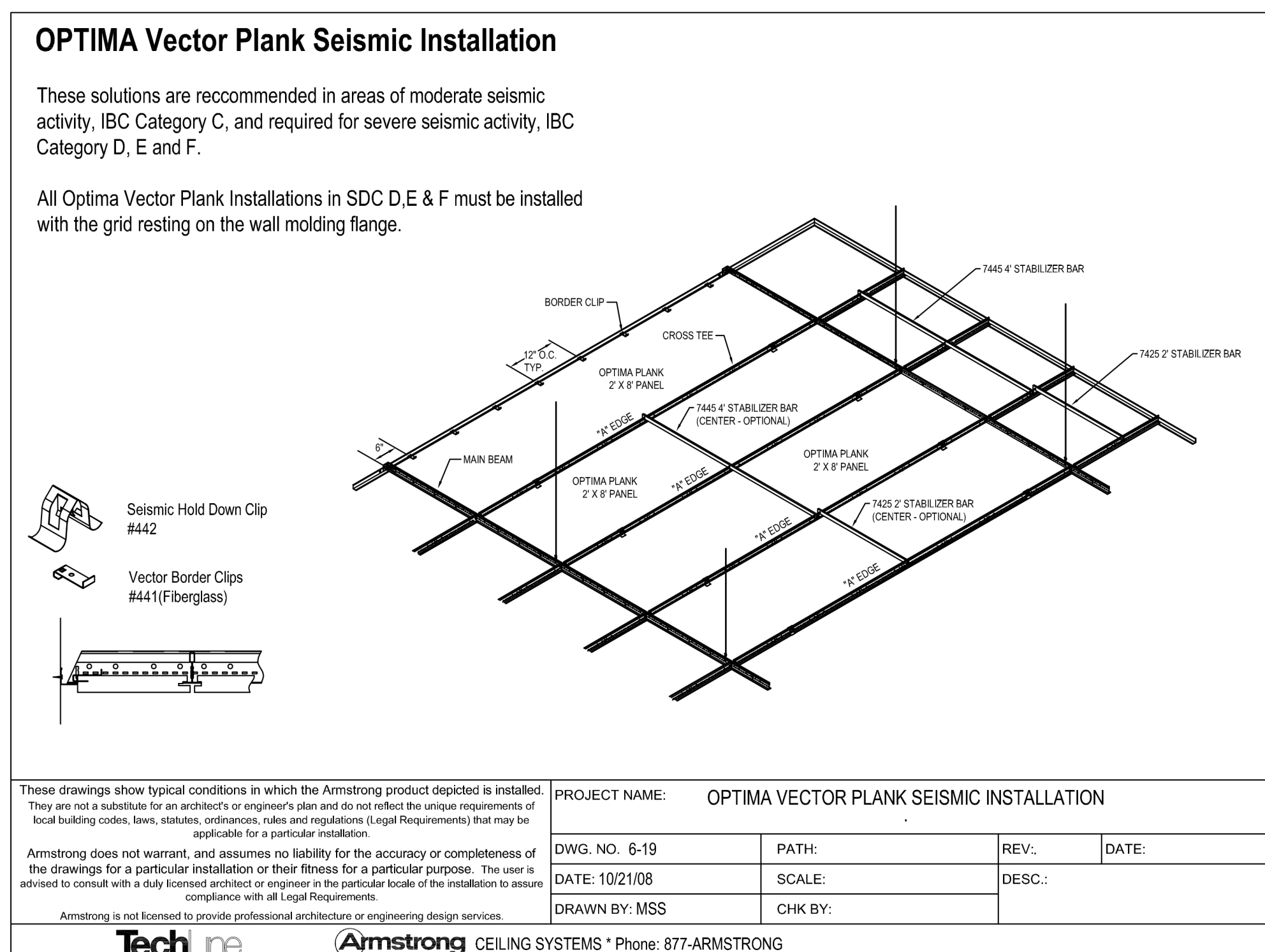
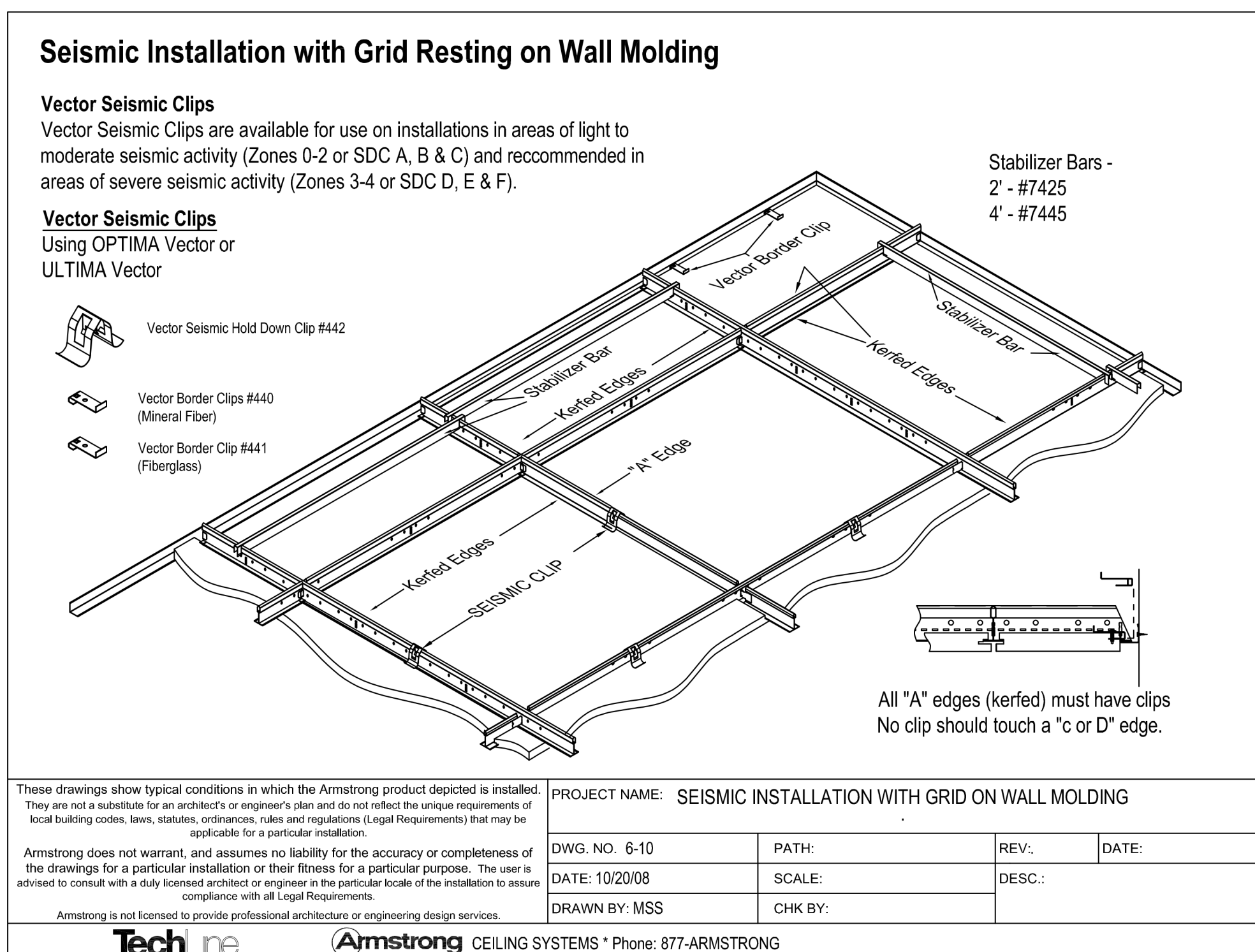
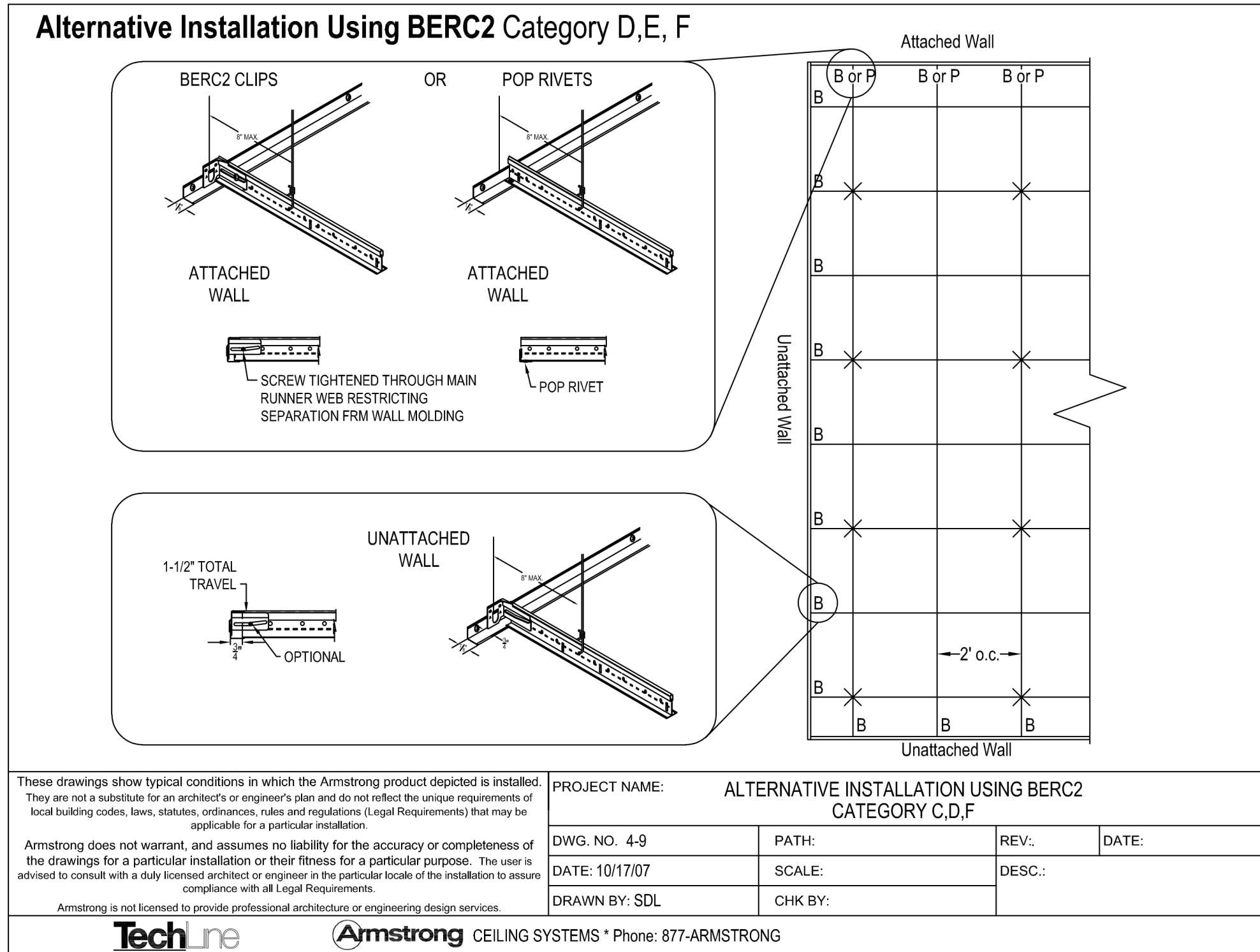
7 SEISMIC CEILING GRID DETAIL NTS



6 SEISMIC CEILING GRID DETAIL NTS

5 SEISMIC CEILING GRID DETAIL NTS


4 SEISMIC CEILING GRID DETAIL NTS



3 SEISMIC CEILING GRID DETAIL NTS

2 SEISMIC CEILING GRID DETAIL NTS

1 SEISMIC CEILING GRID DETAIL NTS



BUC-EE'S

A DEVELOPMENT OF

Buc-ee's Benton, LLC
Saline County, Arkansas

TEL: (979) 230-2920

BUC-EE'S TRAVEL CENTER
BENTON, ARKANSAS
74K - L - 2025 -Q1
INTERSTATE 30 & STATE HIGHWAY 229
BENTON, ARKANSAS 72019

LAWRENCE S. LEVINSON, A.I.A.

7800 Washington Ave., Suite 600 Houston, TX 77007
main: 713.600.3600 www.laarc.com

ISSUE/REVISION LOG:

No.	DESCRIPTION	DATE
3	OWNER CHANGES	04/23/2025

04/23/2025

ISSUED FOR REVIEW: 04/26/2024
ISSUED FOR BID: 05/14/2024
ISSUED FOR PERMIT: 05/14/2024

Copyright 2024 Lawrence S. Levinson, AIA. Warning: This document is protected by U.S. Copyright Law Under Section 102 of the U.S. Copyright and the Architectural Works Copyright Protection Act of 1990. Unauthorized reproduction and distribution of this document or any portion of it, other than for use of the particular project, is prohibited and may result in severe civil and criminal penalties, and will be prosecuted to maximum extent possible under the law.

A2.10

SEISMIC CEILING GRID DETAILS

LAARC PROJECT NUMBER: 2024-107.000

BENTON, ARKANSAS