

Autodesk Docs://74-Buc-ee's Benton-AR (L) 2023/01_BENTON AR_ARCH_(L)_rvt



BUC-EE'S

A DEVELOPMENT OF

Buc-ee's Benton, LLC
Saline County, Arkansas

TEL: (979) 230-2920

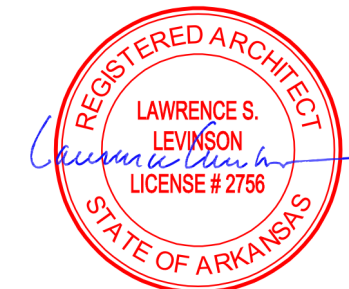
BUC-EE'S TRAVEL CENTER
BENTON, ARKANSAS
74K - L - 2025 -Q1
INTERSTATE 30 & STATE HIGHWAY 229
BENTON, ARKANSAS 72019

LAWRENCE S. LEVINSON, A.I.A.

7800 Washington Ave., Suite 600 Houston, TX 77007
main: 713.650.3600 www.laarc.com

ISSUE/REVISION LOG:

No.	DESCRIPTION	DATE
3	OWNER CHANGES	04/23/2025



04/23/2025

ISSUED FOR REVIEW: 04/26/2024

ISSUED FOR BID: 05/14/2024

ISSUED FOR PERMIT: 05/14/2024

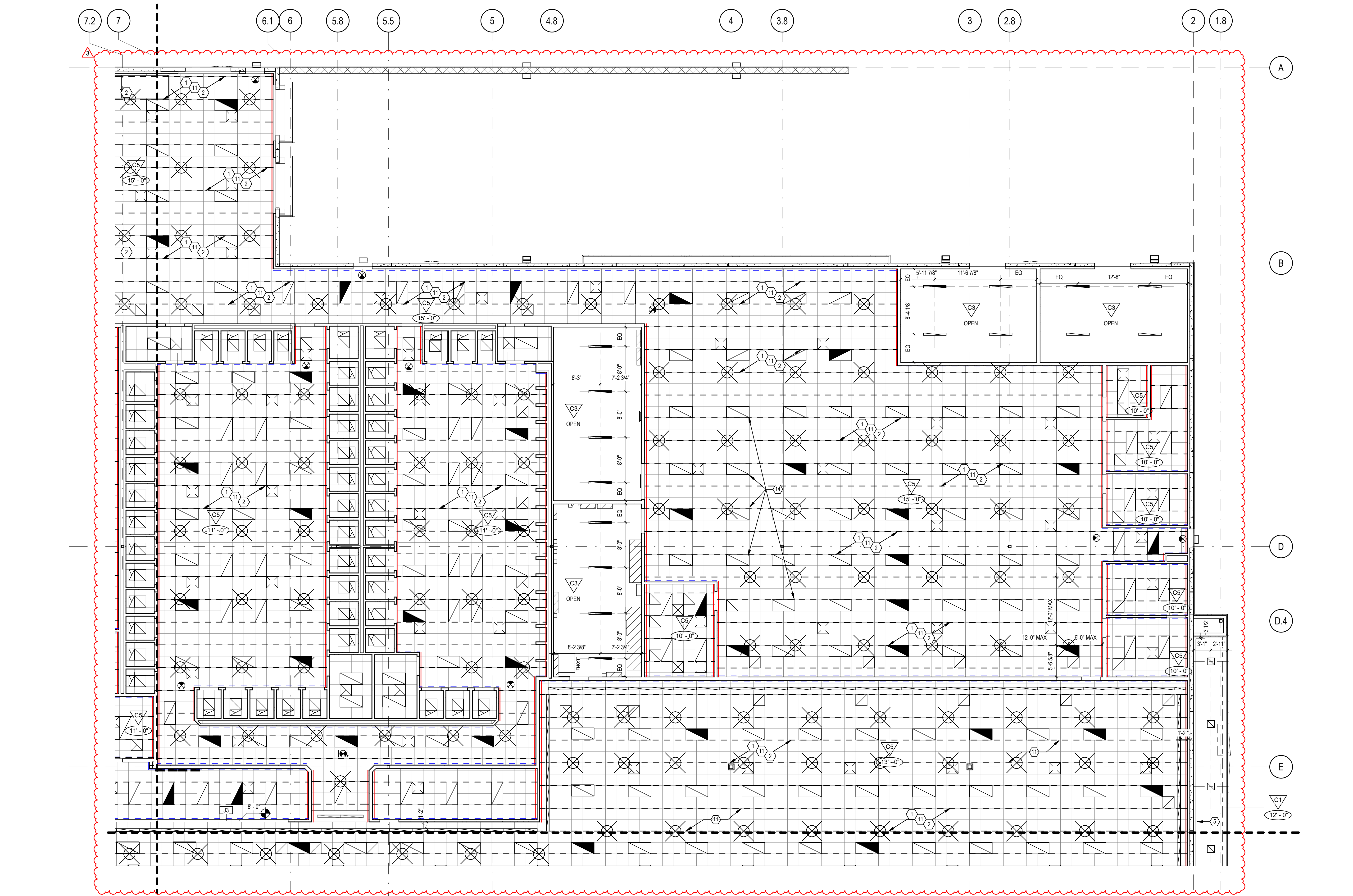
Copyright 2024 Lawrence S. Levinson, A.I.A. Warning: This document is protected by U.S. Copyright Law Under Section 102 of the U.S. Copyright and the Architectural Works Copyright Protection Act of 1990. Unauthorized reproduction and distribution of this document or any portion of it, other than for use of the particular project, is prohibited and may result in severe civil and criminal penalties, and will be prosecuted to maximum extent possible under the law.

A2.01

REFLECTED CEILING PLAN - AREA A

LAARC PROJECT NUMBER: 2024-107.000

BENTON, ARKANSAS



1 REFELCED CEILING PLAN - AREA A 1/8" = 1'-0"

RCP KEYED NOTES

- 1 TYP. SEISMIC JOINT CLIP - MAIN BEAM. SPACE PER MFR. RECOMMENDATION. RE: A2.10 & A2.11
- 2 TYP. SEISMIC JOINT CLIP - CROSS TEE. SPACE PER MFR. RECOMMENDATION. RE: A2.10 & A2.11
- 3 HEAT LAMP LIGHT FIXTURES IN THE T.R.U. & SWEET STREET. COORDINATE DISTANCE FROM BOTTOM OF HEAT LAMP SHADES TO TOP OF COUNTERTOP W/ BUC-EE'S REP. IN THE FIELD.
- 4 TV MONITOR TYPICAL. RE: ELECTRICAL.
- 5 3" CONT. METAL SOFFIT VENT @ WALLS. RE: 9 / A7.00
- 6 WALK-IN COOLER/FREEZER LIGHTS. RE: ELEC DRAWINGS.
- 7 10' LONG SUSPENDED SIGN. VERIFY MOUNTING HEIGHT & FINAL LOCATION WITH OWNER.
- 8 8' LONG SUSPENDED SIGN. VERIFY MOUNTING HEIGHT & FINAL LOCATION WITH OWNER.
- 9 SIGN SUSPENSION CABLE LOCATIONS. PROVIDE GROMMET. RE: 13 / A7.01 FOR CABLE ANCHORING.
- 10 SIGNAGE HANGER BRACING ABOVE CEILING. RE: STRUCTURAL.
- 11 DASHED LINE INDICATES PROPOSED LAY IN CEILING MAIN BEAM LOCATIONS.
- 12 BLUE DASHED LINE INDICATES UNATTACHED WALLS. RE: DETAILS ON A2.10 & A2.11
- 13 RED SOLID LINE INDICATES ATTACHED WALLS. RE: DETAILS ON A2.10 & A2.11
- 14 CENTER ROW OF LIGHT-STRIPS ON SHELVING AISLES AS INDICATED

NOT ALL NOTES ARE USED ON THIS SHEET

GENERAL NOTES

- ALL DIMENSIONS ARE FROM FACE OF FINISH TO FACE OF FINISH, BEGINNING POINT OF CLG. GRID, OR TO CENTERLINE OF LIGHT FIXTURE U. N. O.
- REFLECTED CEILING PLAN INDICATES PROPOSED LAYOUTS OF CEILING MATERIALS. RE: MEP DRAWINGS FOR ADDITIONAL INFORMATION ON CEILING FIXTURES/EQUIPMENT NOT SHOWN.
- ALL CEILING PENETRATIONS SUCH AS, BUT NOT LIMITED TO, LIGHT FIXTURES, SPRINKLER HEADS, MECH. GRILLES/OFFUSERS, & EXIT SIGNS SHALL BE CENTERED ON CEILING TILE. COORDINATE WITH BUC-EE'S PROJECT MANAGER.
- DIMENSIONS, DETAILS, NOTES, ETC. INDICATED FOR CEILING LAYOUT SHALL BE SYMMETRICAL U.N.O.
- LIGHT FIXTURE LOCATIONS ARE CRITICAL AND SHALL BE COORDINATED WITH DUCTWORK AND MECHANICAL EQUIPMENT ABOVE CEILING.
- BR-EM-AS-000 RCP PLANS (RCP CEILING HEIGHTS)
- LATERAL FORCE BRACING IS REQUIRED FOR ALL CEILING AREAS GREATER THAN 1000 SQUARE FEET.
- ALL CEILING BRACING SHALL BE SPACED 12 FEET ON CENTER, MAXIMUM, IN BOTH DIRECTIONS WITH THE FIRST POINT WITHIN 6 FEET, MAXIMUM, FROM EACH WALL. BRACING SHALL BE PLACED A MINIMUM OF 6 FEET FROM ANY PIPES, DUCTS, OR EQUIPMENT. NOT PROVIDED WITH BRACING RESTRAINTS FOR HORIZONTAL FORCES.
- BRACING SHALL BE ATTACHED TO THE CEILING GRID IN SUCH A MANNER THAT THEY CAN SUPPORT A LOAD OF NOT LESS THAN 200 LBS OR TWO TIMES THE ACTUAL DESIGN LOAD, WHICHEVER IS GREATER.

RCP LEGEND

	2'x4' LED FIXTURE RE: MEP PLANS FOR SPECIFICATIONS		2'x2' LED FIXTURE RE: MEP PLANS FOR SPECIFICATIONS		5/8" TYPE "X" GYP BD. PAINT
	LED WALL WASHER FIXTURE RE: MEP PLANS FOR SPECIFICATIONS		EIFS SOFFIT		ALUMINUM SOFFIT PANEL
	4' LED LIGHT STRIP RE: MEP PLANS FOR SPECIFICATIONS		CEILING HEIGHT INDICATOR		EXIT LIGHTS RE: MEP PLANS FOR SPECIFICATIONS
	2'x2' EXHAUST GRILLE RE: MEP PLANS FOR SPECIFICATIONS		RECESSED LIGHT FIXTURE AT EXTERIOR SOFFIT. RE: MEP PLANS FOR SPECIFICATIONS		TYP. SYMBOL FOR SEISMIC BRACING
	2'x2' HVAC RETURN GRILLE RE: MEP PLANS FOR SPECIFICATIONS		5/8" CEMENT BOARD WITH CERAMIC TILE		
	2'x2' HVAC SUPPLY GRILLE RE: MEP PLANS FOR SPECIFICATIONS		OPEN TO STRUCTURE ABOVE		
	2'x1' EXHAUST GRILLE RE: MEP PLANS FOR SPECIFICATIONS		COOLER/FREEZER CEILING		
			2'x2' NON-POROUS / WASHABLE CEILING TILE		

KEY PLAN