



**BUC-EE'S**

A DEVELOPMENT OF

Buc-ee's Benton, LLC  
Saline County, Arkansas

TEL: (979) 230-2920

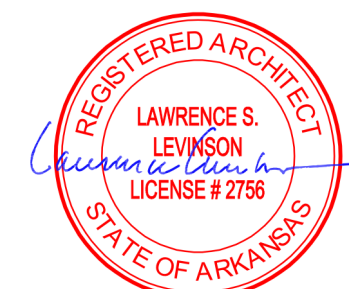
**BUC-EE'S TRAVEL CENTER**  
**BENTON, ARKANSAS**  
**74K - L - 2025 -Q1**  
INTERSTATE 30 & STATE HIGHWAY 229  
BENTON, ARKANSAS 72019

**LAWRENCE S. LEVINSON, A.I.A.**

7800 Washington Ave., Suite 600 Houston, TX 77007  
main: 713.600.3600 www.laarc.com

ISSUE/REVISION LOG:

No.	DESCRIPTION	DATE
3	OWNER CHANGES	04/23/2025



04/23/2025

ISSUED FOR REVIEW: 04/26/2024

ISSUED FOR BID: 05/14/2024

ISSUED FOR PERMIT: 05/14/2024

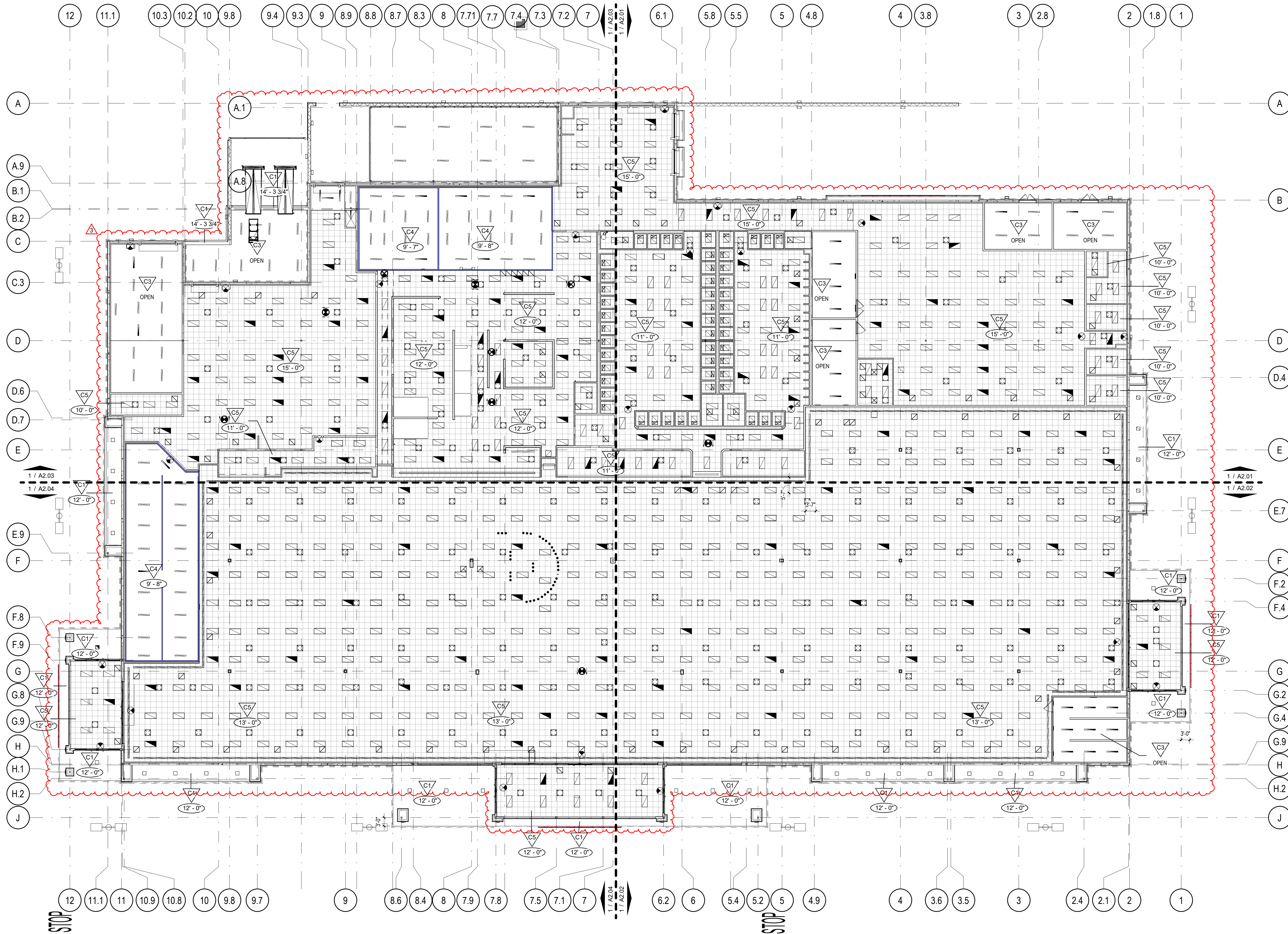
Copyright 2024 Lawrence S. Levinson, A.I.A. Warning: This document is protected by U.S. Copyright Law Under Section 102 of the U.S. Copyright and the Architectural Works Copyright Protection Act of 1990. Unauthorized reproduction and distribution of this document or any portion of it, other than for use of the particular project, is prohibited and may result in severe civil and criminal penalties, and will be prosecuted to maximum extent possible under the law.

**A2.00**

**REFLECTED CEILING PLAN -OVERALL**

LAARC PROJECT NUMBER: 2024-107.000

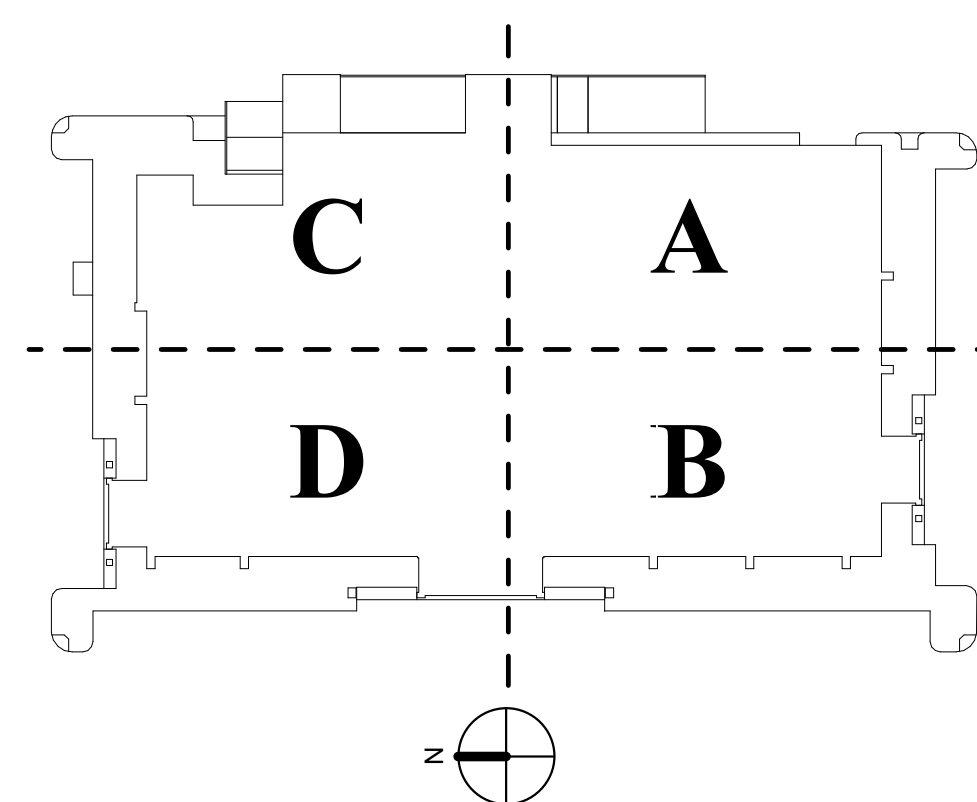
**BENTON, ARKANSAS**



1 REFLECTED CEILING PLAN OVERALL

1/16" = 1'-0"

**KEY PLAN**



**GENERAL NOTES**

- ALL DIMENSIONS ARE FROM FACE OF FINISH TO FACE OF FINISH, BEGINNING POINT OF CLG. GRID, OR TO CENTERLINE OF LIGHT FIXTURE U.N.O.
- REFLECTED CEILING PLAN INDICATES PROPOSED LAYOUTS OF CEILING MATERIALS.
- RE: MEP DRAWINGS FOR ADDITIONAL INFORMATION ON CEILING MATERIALS, EQUIPMENT, AND FIXTURES/EQUIPMENT NOT SHOWN.
- ALL CEILING PENETRATIONS SUCH AS, BUT NOT LIMITED TO, LIGHT FIXTURES, SPRINKLER HEADS, MECH. GRILLES/DIFFUSERS, & EXIT SIGNS SHALL BE CENTERED ON CEILING TILE. COORDINATE WITH BUC-EE'S PROJECT MANAGER.
- DIMENSIONS, DETAILS, NOTES, ETC. INDICATED FOR CEILING LAYOUT SHALL BE SYMMETRICAL U.N.O.
- LIGHT FIXTURE LOCATIONS ARE CRITICAL AND SHALL BE COORDINATED WITH DUCTWORK AND MECHANICAL EQUIPMENT ABOVE CEILING.
- BRACING SHALL BE ATTACHED TO THE CEILING GRID IN SUCH A MANNER THAT THEY CAN SUPPORT A LOAD OF NOT LESS THAN 200 LBS OR TWO TIMES THE ACTUAL DESIGN LOAD, WHICHEVER IS GREATER.

**RCP LEGEND**

	2x4' LED FIXTURE RE: MEP PLANS FOR SPECIFICATIONS		2x2' LED FIXTURE RE: MEP PLANS FOR SPECIFICATIONS		5/8" TYPE "X" GYP BD. PAINT
	LED WALL WASHER FIXTURE RE: MEP PLANS FOR SPECIFICATIONS		4' LED LIGHT STRIP RE: MEP PLANS FOR SPECIFICATIONS		EIFS SOFFIT
	2'x2' EXHAUST GRILLE RE: MEP PLANS FOR SPECIFICATIONS		2'x2' HVAC RETURN GRILLE RE: MEP PLANS FOR SPECIFICATIONS		5/8" CEMENT BOARD WITH CERAMIC TILE
	2'x2' HVAC SUPPLY GRILLE RE: MEP PLANS FOR SPECIFICATIONS		2'x1' EXHAUST GRILLE RE: MEP PLANS FOR SPECIFICATIONS		OPEN TO STRUCTURE ABOVE
					COOLER/FREEZER CEILING
					2'x2' NON-POROUS / WASHABLE CEILING TILE
					CEILING HEIGHT INDICATOR
					EXIT LIGHTS RE: MEP PLANS FOR SPECIFICATIONS
					RECESSED LIGHT FIXTURE AT EXTERIOR SOFFIT. RE: MEP PLANS FOR SPECIFICATIONS
					TYP. SYMBOL FOR SEISMIC BRACING