



BUC-EE'S

A DEVELOPMENT OF

Buc-ee's Benton, LLC
Saline County, Arkansas

TEL: (979) 230-2920

BUC-EE'S TRAVEL CENTER BENTON, ARKANSAS

74K - L - 2025 -Q1
INTERSTATE 30 & STATE HIGHWAY 229
BENTON, ARKANSAS 72019

LAWRENCE S.
LEVINSON, A.I.A.

7800 Washington Ave., Suite 600 Houston, TX 77007
main: 713.600.3600 www.laarc.com

ISSUE/REVISION LOG:

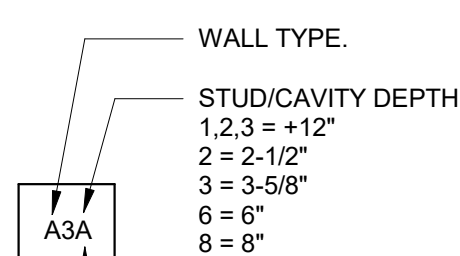
No.	DESCRIPTION	DATE
3	OWNER CHANGES	04/23/2025

PARTITION TYPE NOTE

- PARTITION TYPE NOTES:**
- ALL 5/8" GYP. BD. SHALL BE TYPE - X
 - ALL 5/8" PLYWOOD SHALL BE FIRE RETARDANT TREATED (F.R.T.)
 - ANY WALLS THAT ARE IN WET AREAS SHALL HAVE WATER RESISTANT GYP. BD OR CEMENT BOARD PER CHAPTER 5 IF IC
 - REFERENCE A1.40 FOR TILE TRANSITION AND TERMINATION DETAILS.
 - DO NOT ATTACH STUDS OR GYP. BD. TO TOP TRACK AT SLIP JOINT CONNECTIONS.
 - USE SOUND ATTENUATION SEALANT AND JOINT COMPOUND AT SCHEDULED SOUND ATTENUATION WALLS.
 - SEAM TAPE AND SEAL FULL PERIMETER OF FOIL FACED BATT INSULATION TO ENSURE CONTINUOUS MOISTURE BARRIER. ENSURE ALL WALL PENETRATIONS ARE SEALED AND TAPED.
 - DO NOT SEAM TAPE AND SEAL CONTINUOUS RIGID INSULATION

PARTITION TYPE LEGEND

WALL TYPE INDICATOR



A = SOUND ATTENUATION BATTS
1 = 1 HR. FIRE RATED
2 = 2 HR. FIRE RATED
3 = 3 HR. FIRE RATED

04/23/2025

ISSUED FOR REVIEW: 04/26/2024
ISSUED FOR BID: 05/14/2024
ISSUED FOR PERMIT: 05/14/2024

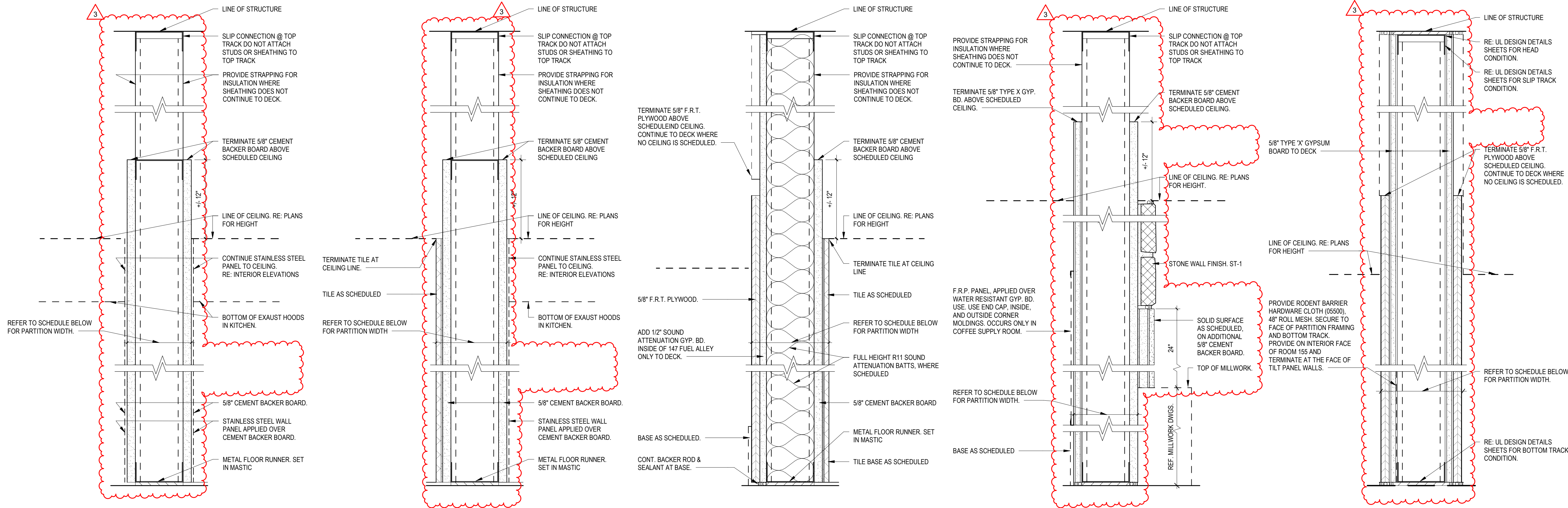
Copyright 2024 Lawrence S. Levinson, AIA. Warning: This document is protected by U.S. Copyright Law Under Section 102 of the U.S. Copyright and the Architectural Works Copyright Protection Act of 1990. Unauthorized reproduction and distribution of this document or any portion of it, other than for use of the particular project, is prohibited and may result in severe civil and criminal penalties, and will be prosecuted to maximum extent possible under the law.

A1.31

INTERIOR PARTITION TYPES
2

LAARC PROJECT NUMBER: 2024-107.000

BENTON, ARKANSAS



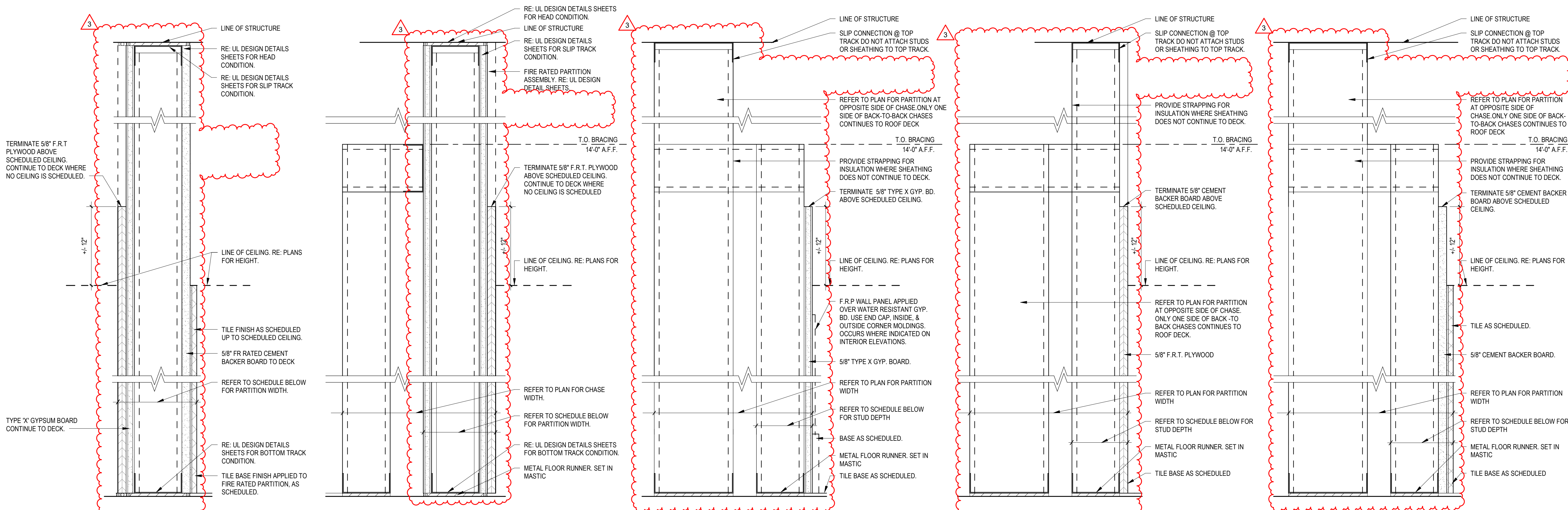
Z - PARTITION WALL						
FLOOR PLAN DESIGNATION	STUD WIDTH	PART. WIDTH	FIRE RATING	U.L. DESIGN	S.T.C. RATING	REMARKS
Z3	3 5/8"	4 7/8"	N/A	N/A	-	
Z6	6"	7 1/4"	N/A	N/A	-	MIN. R-11, 3" SOUND ATTENUATION BATTS
Z8	8"	9 1/4"	N/A	N/A	-	MIN. R-11, 3" SOUND ATTENUATION BATTS

Y - PARTITION WALL						
FLOOR PLAN DESIGNATION	STUD WIDTH	PART. WIDTH	FIRE RATING	U.L. DESIGN	S.T.C. RATING	REMARKS
Y3	3 5/8"	5 3/8"	N/A	N/A	-	
Y6	6"	7 3/4"	N/A	N/A	-	MIN. R-11, 3" SOUND ATTENUATION BATTS
Y8	8"	9 3/4"	N/A	N/A	-	MIN. R-11, 3" SOUND ATTENUATION BATTS

W - PARTITION WALL						
FLOOR PLAN DESIGNATION	STUD WIDTH	PART. WIDTH	FIRE RATING	U.L. DESIGN	S.T.C. RATING	REMARKS
W3A	3 5/8"	5 7/8"	N/A	N/A	-	MIN. R-11, 3" SOUND ATTENUATION BATTS AND 1/2" SOUND ATTENUATION GYP. BD. INSIDE OF MECHANICAL AREAS.

V - PARTITION WALL						
FLOOR PLAN DESIGNATION	STUD WIDTH	PART. WIDTH	FIRE RATING	U.L. DESIGN	S.T.C. RATING	REMARKS
V6	6"	7 1/4"	N/A	N/A	-	MIN. R-11, 3" SOUND ATTENUATION BATTS

T - FIRE RATED PARTITION WALL						
FLOOR PLAN DESIGNATION	STUD WIDTH	PART. WIDTH	FIRE RATING	U.L. DESIGN	S.T.C. RATING	REMARKS
T31	3 5/8"	6 1/8"	1 HR	U419	-	RE: SHEET A1.33 AND A1.34 FOR UL WALL ASSEMBLIES AND DETAILS
T61	6"	8 1/2"	1 HR	U419	-	



S - FIRE RATED PARTITION WALL						
FLOOR PLAN DESIGNATION	STUD WIDTH	PART. WIDTH	FIRE RATING	U.L. DESIGN	S.T.C. RATING	REMARKS
S31	3 5/8"	6"	1 HR	U433	-	RE: SHEET A1.33 AND A1.34 FOR UL WALL ASSEMBLIES AND DETAILS
S61	6"	8 3/8"	1 HR	U433	-	

R - FIRE RATED PARTITION WALL						
FLOOR PLAN DESIGNATION	STUD WIDTH	PART. WIDTH	FIRE RATING	U.L. DESIGN	S.T.C. RATING	REMARKS
R31	3 5/8"	5 1/2"	1 HR	U419	-	RE: SHEET A1.33 AND A1.34 FOR UL WALL ASSEMBLIES AND DETAILS

Q - CHASE WALL						
FLOOR PLAN DESIGNATION	STUD WIDTH	PART. WIDTH	FIRE RATING	U.L. DESIGN	S.T.C. RATING	REMARKS
Q2	2 1/2"	3 1/8"	N/A	N/A	-	
Q3	3 5/8"	4 1/4"	N/A	N/A	-	
Q6	6"	6 5/8"	N/A	N/A	-	

P - CHASE WALL						
FLOOR PLAN DESIGNATION	STUD WIDTH	PART. WIDTH	FIRE RATING	U.L. DESIGN	S.T.C. RATING	REMARKS
P2	2 1/2"	3 1/8"	N/A	N/A	-	
P3	3 5/8"	4 1/4"	N/A	N/A	-	
P6	6"	6 5/8"	N/A	N/A	-	BOTH LAYERS OF FRAMING STUDS IN CHASE CONTINUE TO DECK.

N - CHASE WALL						
FLOOR PLAN DESIGNATION	STUD WIDTH	PART. WIDTH	FIRE RATING	U.L. DESIGN	S.T.C. RATING	REMARKS
N1	1 1/2"	2 5/8"	N/A	N/A	-	
N2	2 1/2"	3 5/8"	N/A	N/A	-	
N3	3 5/8"	4 3/4"	N/A	N/A	-	
N6	6"	7 1/8"	N/A	N/A	-	BOTH LAYERS OF FRAMING STUDS IN CHASE CONTINUE TO DECK.