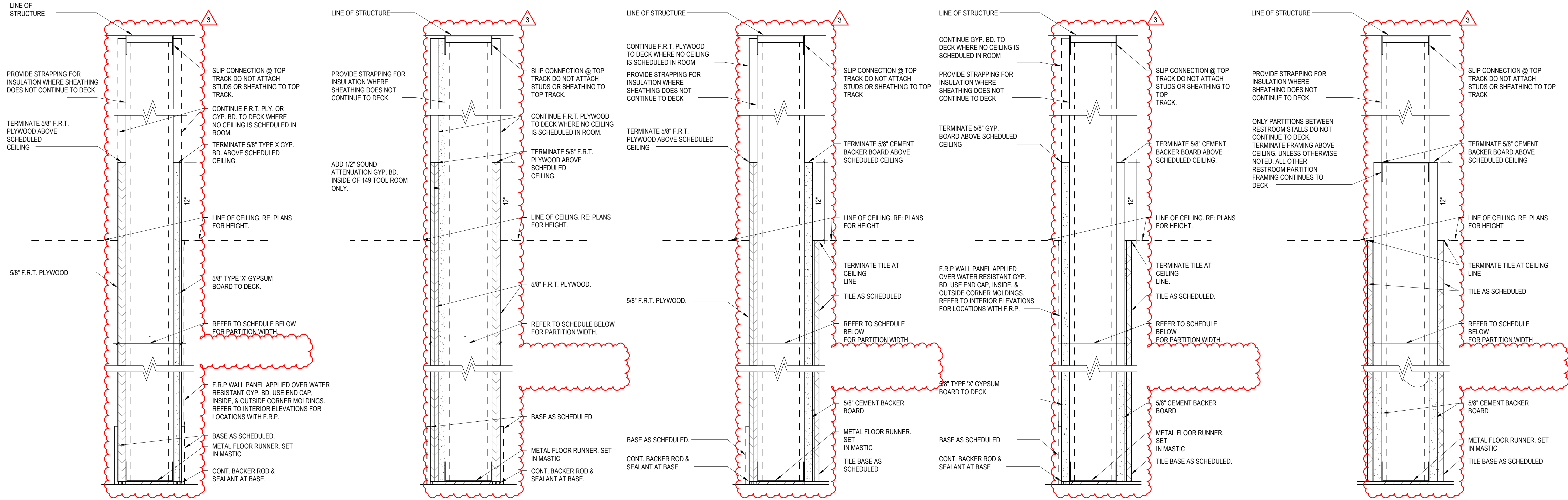


Autodesk Docs://74-Buc-ee's Benton-AR (L) 2023/01_BENTON AR_ARCH_(L)_rvt



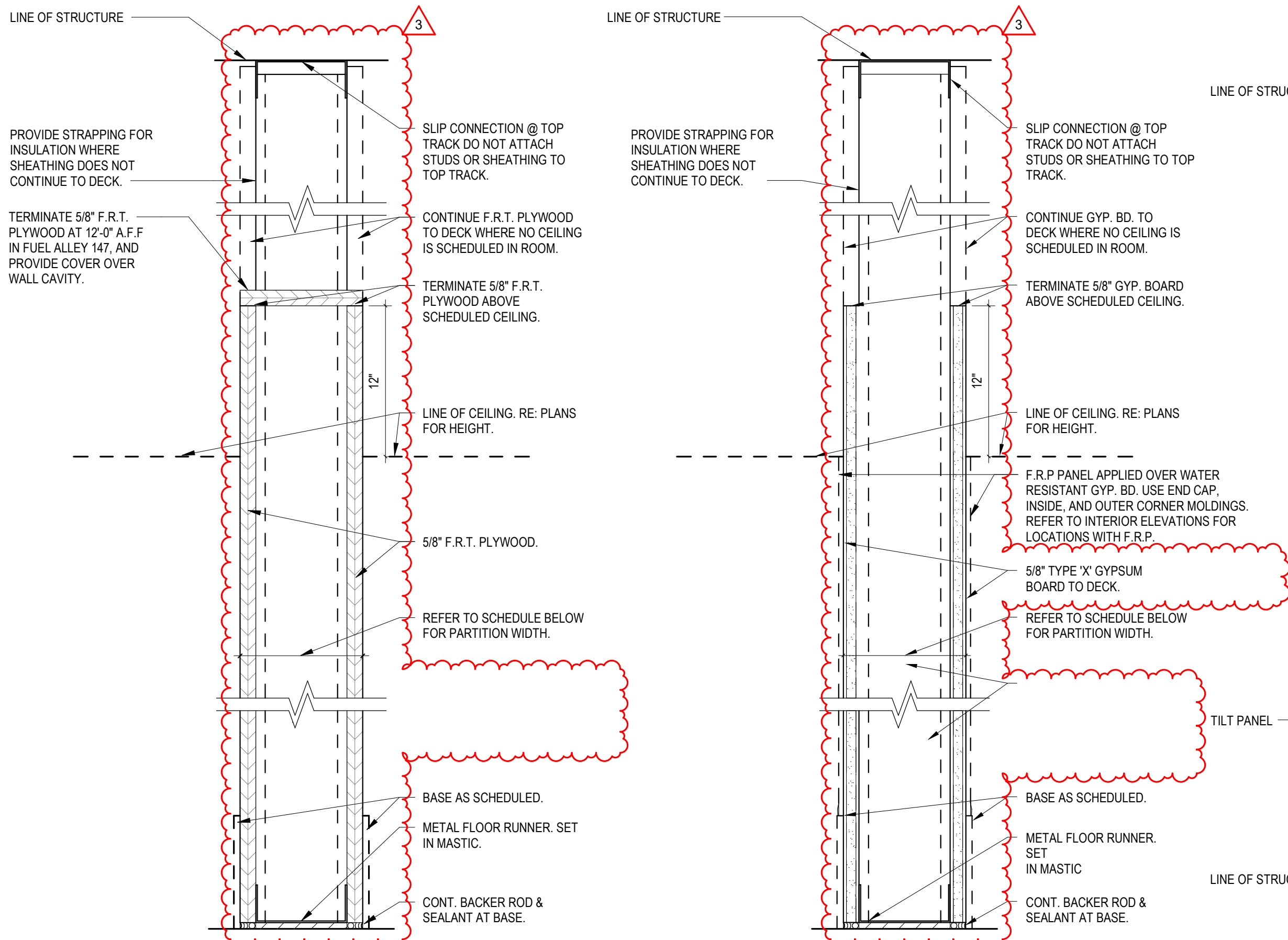
M - PARTITION WALL						
FLOOR PLAN DESIGNATION	STUD WIDTH	PART. WIDTH	FIRE RATING	U.L. DESIGN	S.T.C. RATING	REMARKS
M3	3 5/8"	4-7/8"	N/A	N/A	-	
	3 5/8"	4-7/8"	N/A	N/A	-	MIN. R-11, 3" SOUND ATTENUATION BATTS
M6	6"	7-1/4"	N/A	N/A	-	MIN. R-11, 3" SOUND ATTENUATION BATTS
	6"	7-1/4"	N/A	N/A	-	

L - PARTITION WALL						
FLOOR PLAN DESIGNATION	STUD WIDTH	PART. WIDTH	FIRE RATING	U.L. DESIGN	S.T.C. RATING	REMARKS
L6	6"	7-3/4"	N/A	N/A	-	MIN. R-11, 3" SOUND ATTENUATION BATTS AND 1/2" SOUND ATTENUATION GYP. BD. INSIDE OF MECHANICAL AREAS.

K - PARTITION WALL						
FLOOR PLAN DESIGNATION	STUD WIDTH	PART. WIDTH	FIRE RATING	U.L. DESIGN	S.T.C. RATING	REMARKS
K3	3 5/8"	5-3/8"	N/A	N/A	-	MIN. R-11, 3" SOUND ATTENUATION BATTS
	3 5/8"	5-3/8"	N/A	N/A	-	
K6	6"	7-3/4"	N/A	N/A	-	MIN. R-11, 3" SOUND ATTENUATION BATTS
	6"	7-3/4"	N/A	N/A	-	

J - PARTITION WALL						
FLOOR PLAN DESIGNATION	STUD WIDTH	PART. WIDTH	FIRE RATING	U.L. DESIGN	S.T.C. RATING	REMARKS
J3	3 5/8"	5-3/8"	N/A	N/A	-	MIN. R-11, 3" SOUND ATTENUATION BATTS
	3 5/8"	5-3/8"	N/A	N/A	-	
J6	6"	7-3/4"	N/A	N/A	-	MIN. R-11, 3" SOUND ATTENUATION BATTS
	6"	7-3/4"	N/A	N/A	-	

H - PARTITION WALL						
FLOOR PLAN DESIGNATION	STUD WIDTH	PART. WIDTH	FIRE RATING	U.L. DESIGN	S.T.C. RATING	REMARKS
H3	3 5/8"	5-7/8"	N/A	N/A	-	MIN. R-11, 3" SOUND ATTENUATION BATTS
	3 5/8"	5-7/8"	N/A	N/A	-	
H6	6"	8-1/4"	N/A	N/A	-	MIN. R-11, 3" SOUND ATTENUATION BATTS
	6"	8-1/4"	N/A	N/A	-	
H8	6"	10-1/4"	N/A	N/A	-	



G - PARTITION WALL						
FLOOR PLAN DESIGNATION	STUD WIDTH	PART. WIDTH	FIRE RATING	U.L. DESIGN	S.T.C. RATING	REMARKS
G3	3 5/8"	4-7/8"	N/A	N/A	-	MIN. R-11, 3" SOUND ATTENUATION BATTS
	3 5/8"	4-7/8"	N/A	N/A	-	
G6	6"	7-1/4"	N/A	N/A	-	MIN. R-11, 3" SOUND ATTENUATION BATTS
	6"	7-1/4"	N/A	N/A	-	

E - PARTITION WALL						
FLOOR PLAN DESIGNATION	STUD WIDTH	PART. WIDTH	FIRE RATING	U.L. DESIGN	S.T.C. RATING	REMARKS
E3	3 5/8"	4-7/8"	N/A	N/A	-	MIN. R-11, 3" SOUND ATTENUATION BATTS
	3 5/8"	4-7/8"	N/A	N/A	-	
E6	6"	7-1/4"	N/A	N/A	-	MIN. R-11, 3" SOUND ATTENUATION BATTS
	6"	7-1/4"	N/A	N/A	-	

C - FURRING WALL						
FLOOR PLAN DESIGNATION	STUD WIDTH	PART. WIDTH	FIRE RATING	U.L. DESIGN	S.T.C. RATING	REMARKS
C3	3 5/8"	5-1/4"	N/A	N/A	-	
	3 5/8"	5-1/4"	N/A	N/A	-	

B - FURRING WALL						
FLOOR PLAN DESIGNATION	STUD WIDTH	PART. WIDTH	FIRE RATING	U.L. DESIGN	S.T.C. RATING	REMARKS
B3	3 5/8"	5-1/4"	N/A	N/A	-	
	3 5/8"	5-1/4"	N/A	N/A	-	

A - FURRING WALL						
FLOOR PLAN DESIGNATION	STUD WIDTH	PART. WIDTH	FIRE RATING	U.L. DESIGN	S.T.C. RATING	REMARKS
A3	3 5/8"	5-3/4"	N/A	N/A	-	
	3 5/8"	5-3/4"	N/A	N/A	-	

PARTITION TYPE NOTE

PARTITION TYPE NOTES:

- ALL 5/8" GYP. BD. SHALL BE TYPE - X
- ALL 5/8" PLYWOOD SHALL BE FIRE RETARDANT TREATED (F.R.T.)
- ANY WALLS THAT ARE IN WET AREAS SHALL HAVE WATER RESISTANT GYP. BD OR CEMENT BOARD PER CHAPTER 25 IF BC
- REFERENCE A1.40 FOR TILE TRANSITION AND TERMINATION DETAILS.
- DO NOT ATTACH STUDS OR GYP. BD. TO TOP TRACK AT SLIP JOINT CONNECTIONS.
- USE SOUND ATTENUATION SEALANT AND JOINT COMPOUND AT SCHEDULED SOUND ATTENUATION WALLS.
- SEAM TAPE AND SEAL FULL PERIMETER OF FOIL FACED BATT INSULATION TO ENSURE CONTINUOUS MOISTURE BARRIER. ENSURE ALL WALL PENETRATIONS ARE SEALED AND TARED.
- DO NOT SEAM TAPE AND SEAL CONTINUOUS RIGID INSULATION

PARTITION TYPE LEGEND

WALL TYPE INDICATOR

WALL TYPE.

STUD/CAVITY DEPTH.

1, 2, 3 = +12"

2 = 2-1/2"

3 = 3-5/8"

6 = 6"

8 = 8"

A = SOUND ATTENUATION BATTS

1 = 1 HR. FIRE RATED

2 = 2 HR. FIRE RATED

3 = 3 HR. FIRE RATED

A DEVELOPMENT OF

Buc-ee's Benton, LLC

Saline County, Arkansas

TEL: (979) 230-2920

BUC-EE'S TRAVEL CENTER

BENTON, ARKANSAS

74K - L - 2025 -Q1

INTERSTATE 30 & STATE HIGHWAY 229
BENTON, ARKANSAS 72019

LAWRENCE S. LEVINSON, A.I.A.

7800 Washington Ave., Suite 600
main: 713.600.3600
Houston, TX 77007
www.laarc.com

ISSUE/REVISION LOG:

No.	DESCRIPTION	DATE
3	OWNER CHANGES	04/23/2025

04/23/2025

ISSUED FOR REVIEW: 04/26/2024

ISSUED FOR BID: 05/14/2024

ISSUED FOR PERMIT: 05/14/2024

Copyright 2024 Lawrence S. Levinson, AIA. Warning: This document is protected by U.S. Copyright Law Under Section 102 of the U.S. Copyright and the Architectural Works Copyright Protection Act of 1990. Unauthorized reproduction and distribution of this document or any portion of it, other than for use of the particular project, is prohibited and may result in severe civil and criminal penalties, and will be prosecuted to maximum extent possible under the law.

A1.30

INTERIOR PARTITION TYPES

1

LAARC PROJECT NUMBER: 2024-107.000

BENTON, ARKANSAS