



BUC-EE'S

A DEVELOPMENT OF

Buc-ee's Benton, LLC
Saline County, Arkansas

TEL: (979) 230-2920

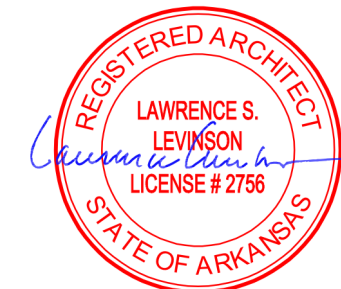
**BUC-EE'S TRAVEL CENTER
BENTON, ARKANSAS**
74K - L - 2025 -Q1
INTERSTATE 30 & STATE HIGHWAY 229
BENTON, ARKANSAS 72019

**LAWRENCE S.
LEVINSON, A.I.A.**

7800 Washington Ave., Suite 600 Houston, TX 77007
main: 713.600.3600 www.laarc.com

ISSUE/REVISION LOG:

No.	DESCRIPTION	DATE
1	OWNER CHANGES	09/09/2024
3	OWNER CHANGES	04/23/2025



04/23/2025

ISSUED FOR REVIEW:	04/26/2024
ISSUED FOR BID:	05/14/2024
ISSUED FOR PERMIT:	05/14/2024

Copyright 2024 Lawrence S. Levinson, A.I.A. Warning: This document is protected by U.S. Copyright Law Under Section 102 of the U.S. Copyright and the Architectural Works Copyright Protection Act of 1990. Unauthorized reproduction and distribution of this document or any portion of it, other than for use of the particular project, is prohibited and may result in severe civil and criminal penalties, and will be prosecuted to maximum extent possible under the law.

A1.20

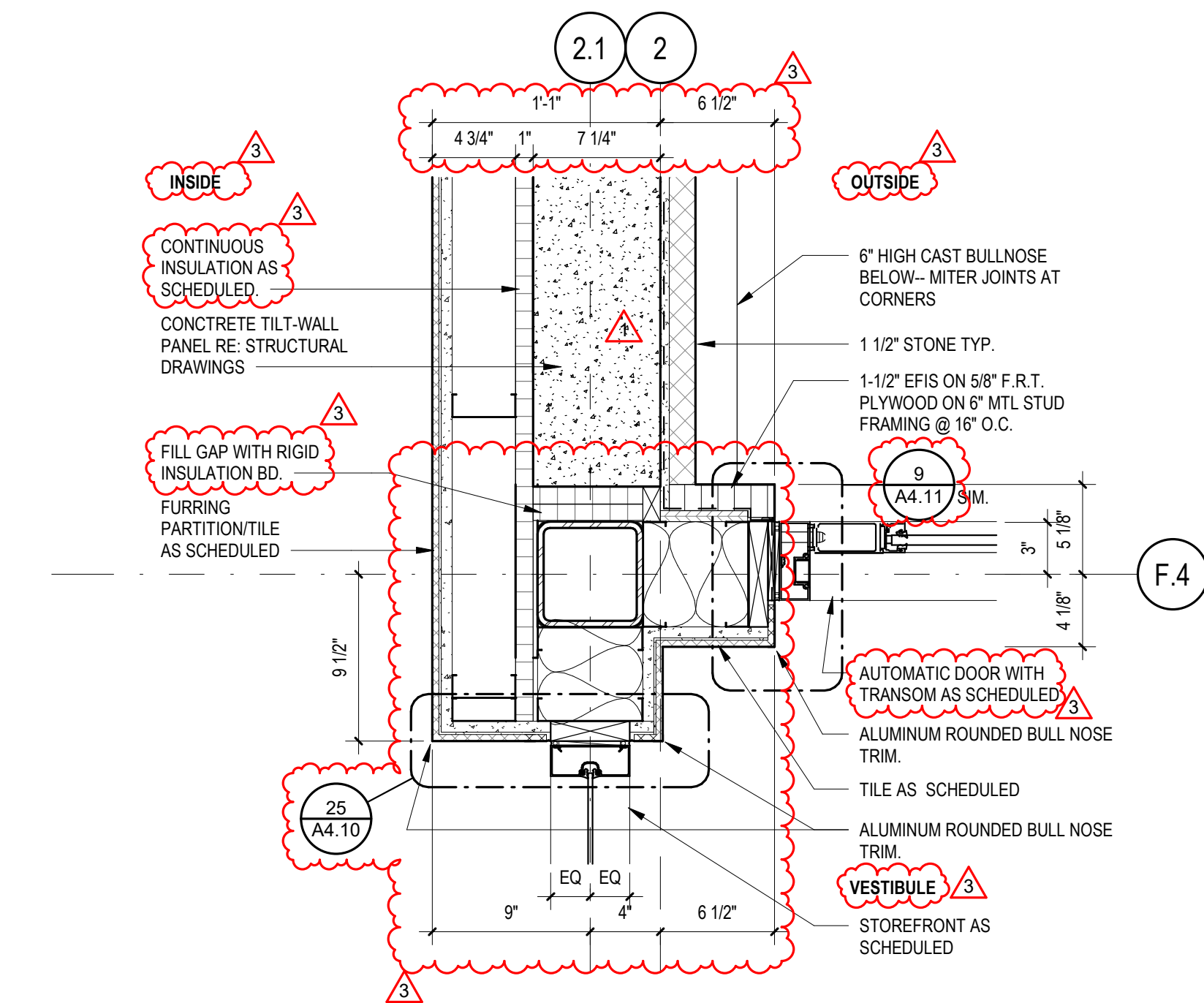
PLAN DETAILS

LAARC PROJECT NUMBER: 2024-107.000

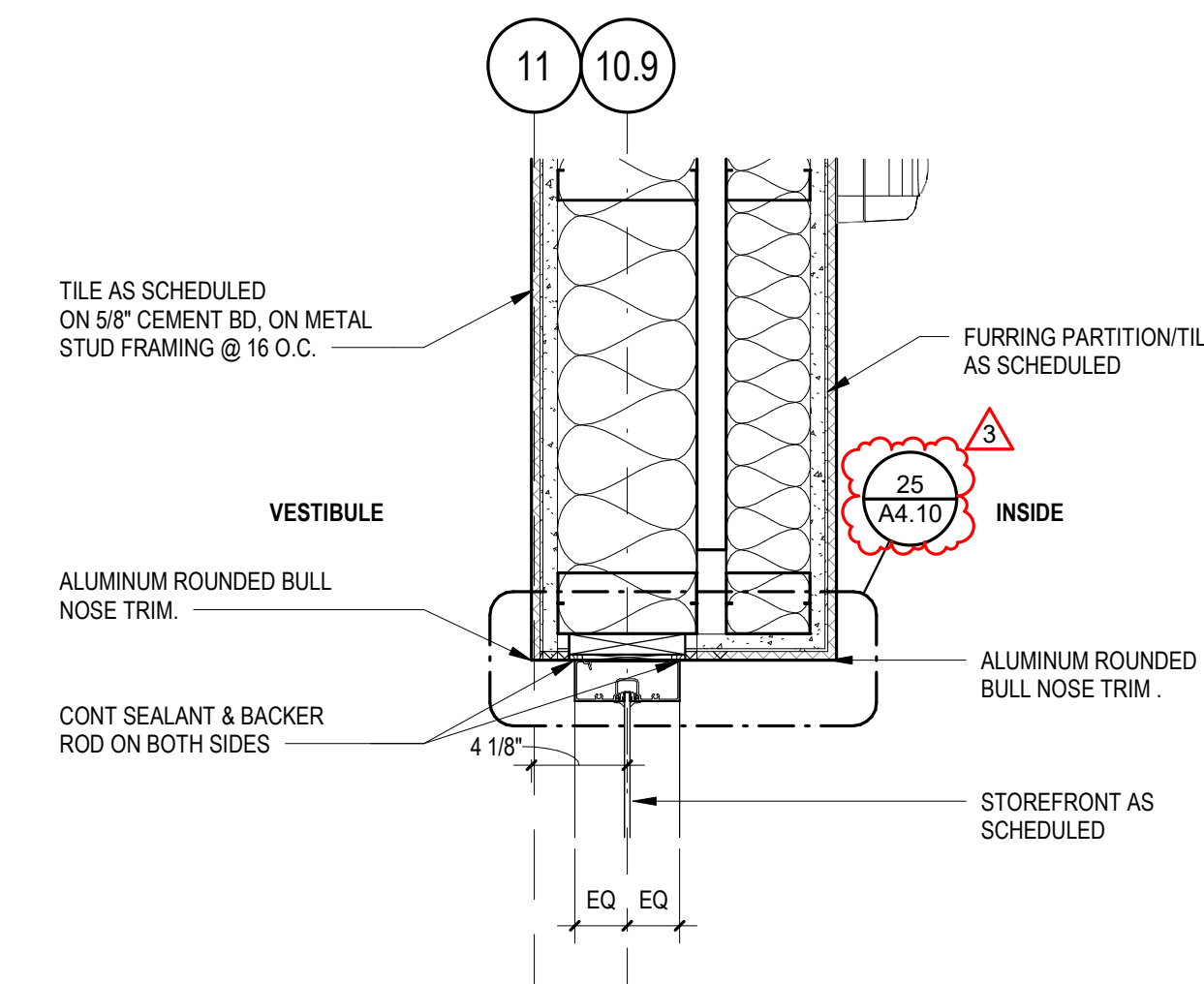
BENTON, ARKANSAS

SYNTHETIC STONE NOTE

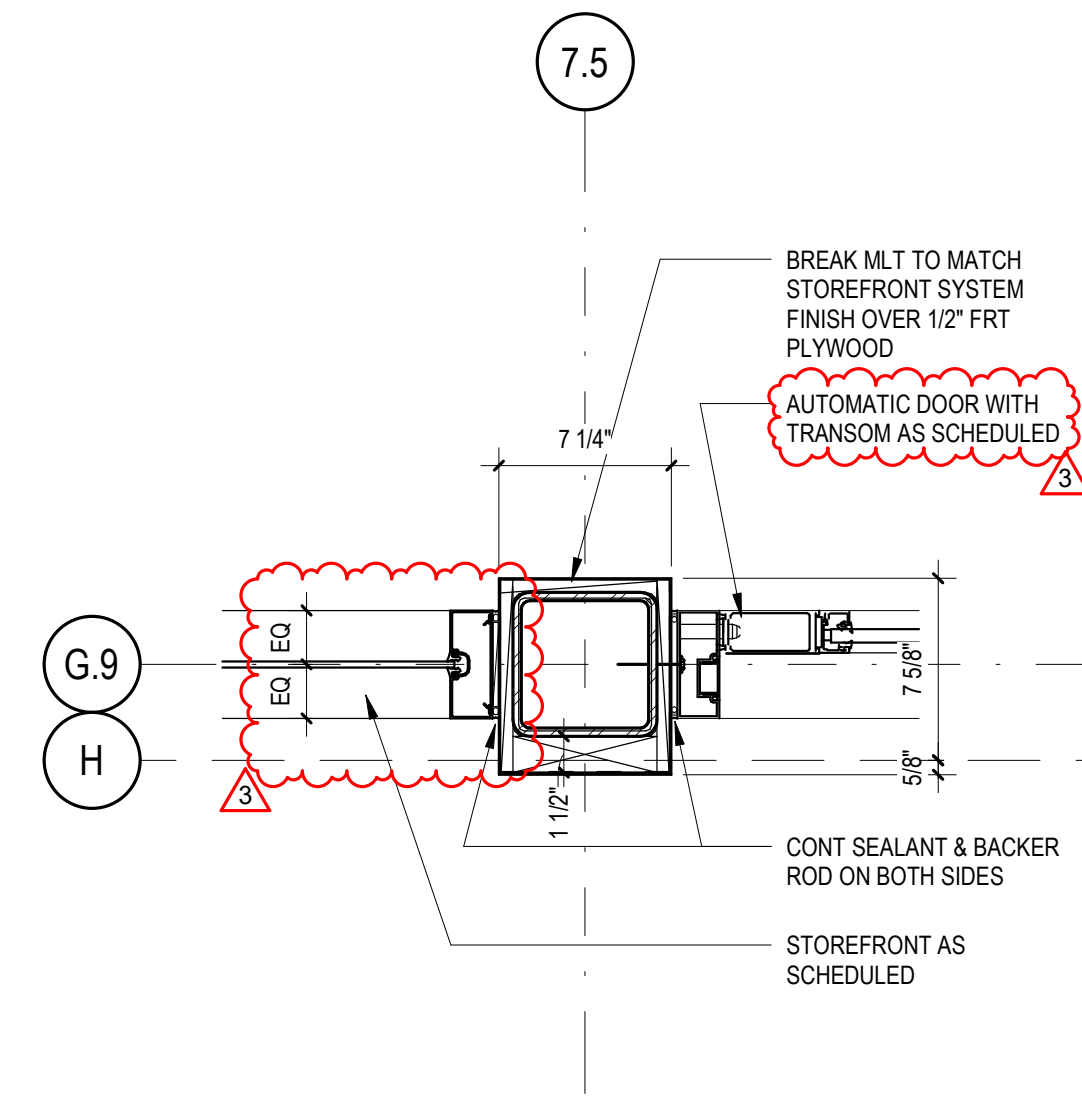
- SYNTHETIC STONE VENEER NOTES:
SYNTHETIC STONE TO BE INSTALLED ACCORDING TO LATRICRETE SPECIFICATIONS W/ LATRICRETE REPRESENTATIVE ON-SITE WHEN WORK BEGINS.
- SYNTHETIC STONE (ON METAL STUDS) TO BE 1-1/2" (+/-) THICK ON LATRICRETE MVS HI-BOND VENEER MORTAR, ON LATRICRETE MVS AIR & WATER BARRIER ON 5/8" CEMENT BACKER BD. (W/ ALL JT. S REINF. W/ FIBER MESH PRIOR TO WATERPROOFING) ON 5/8" EXT. GR. FRT. PLYWD. SHEATH ON METAL STUD FRAMING. (REFER TO STRUCTURAL DRAWINGS).
- SYNTHETIC STONE (ON CONCRETE TILT WALL PANELS AND CMU WALLS) TO BE 1-1/2" (+/-) THICK ON LATRICRETE MVS HI-BOND VENEER MORTAR, ON LATRICRETE MVS AIR & WATER.



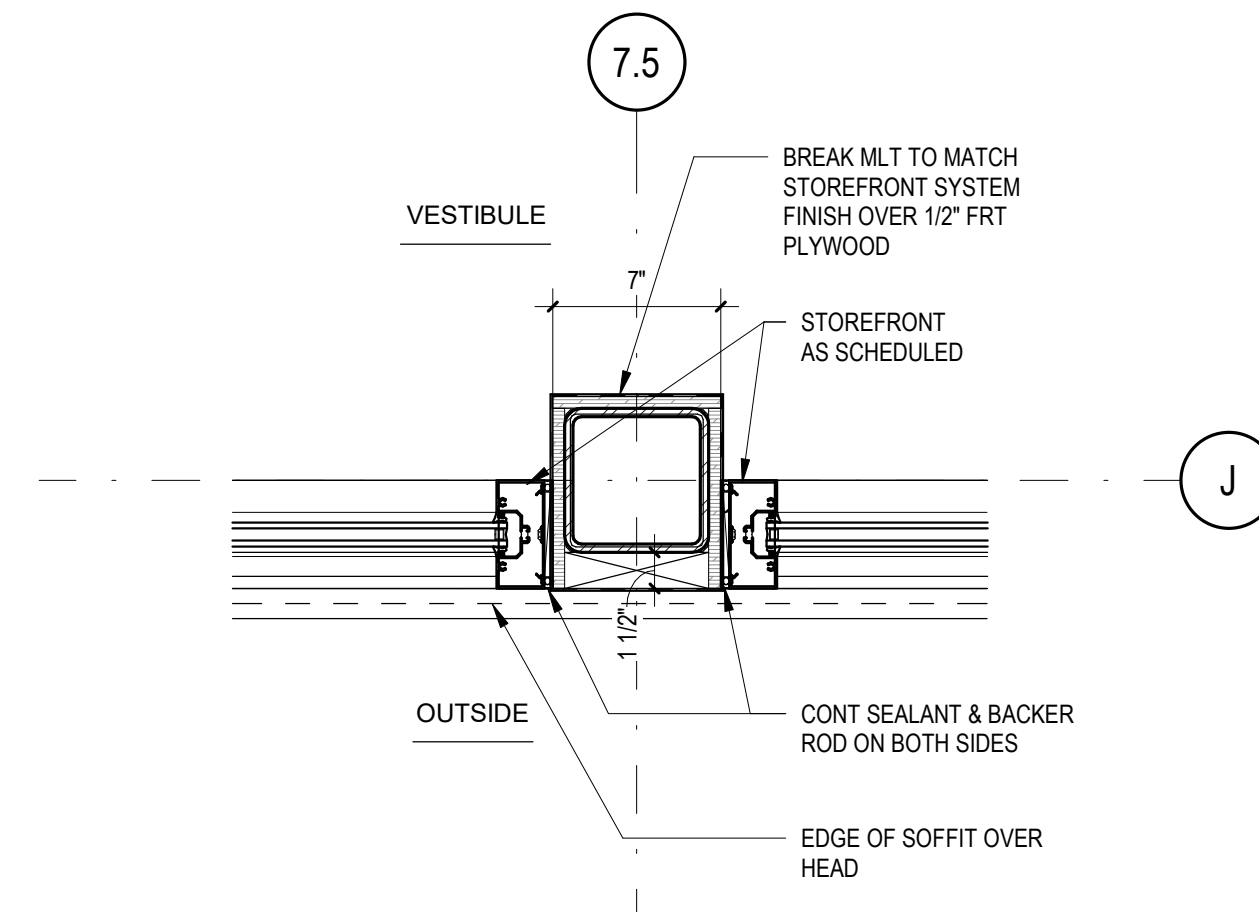
16 PLAN DETAIL @ AUTO DOOR 1 1/2" = 1'-0"



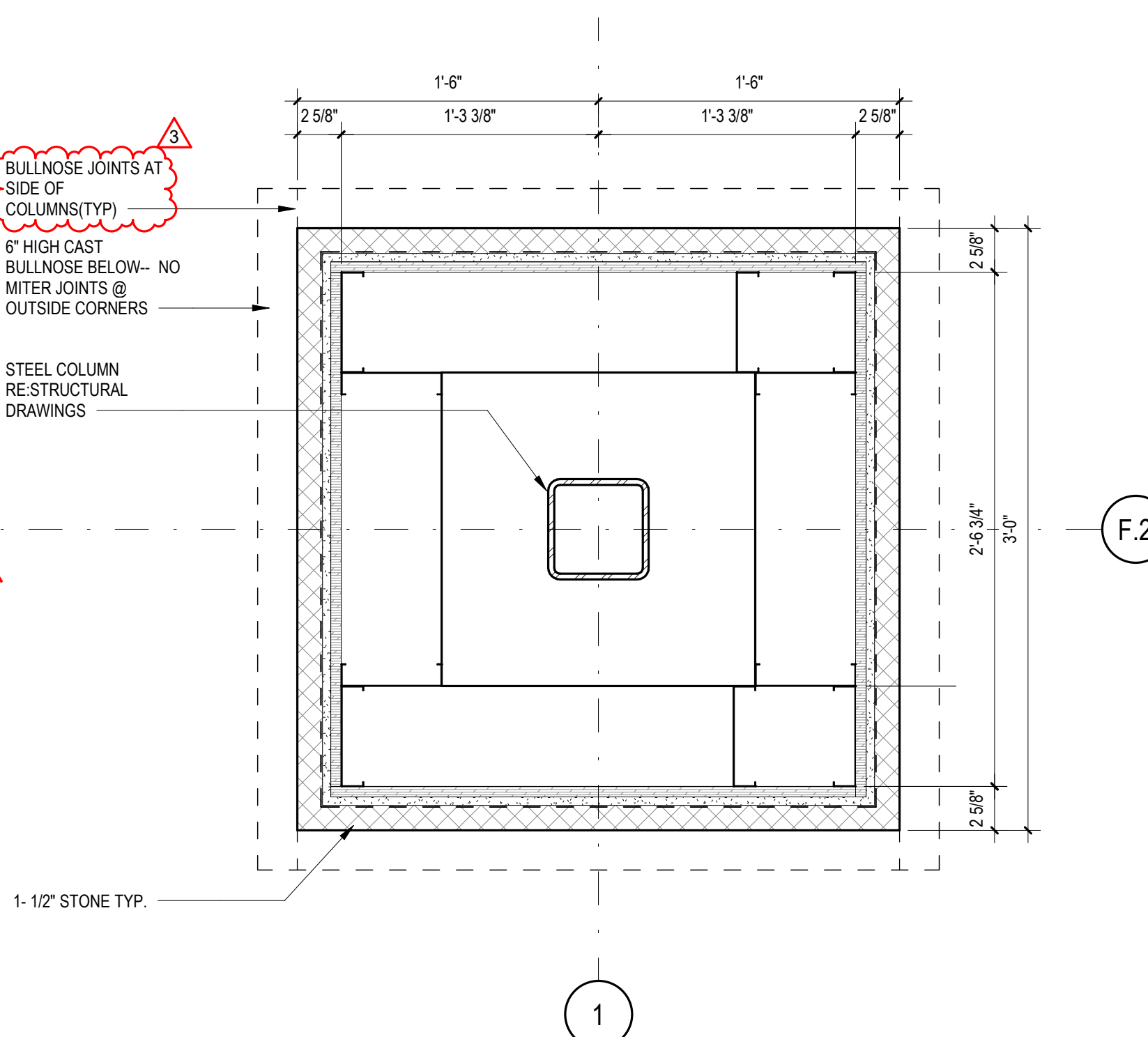
12 JAMB DETAIL @ VESTIBULE 1 1/2" = 1'-0"



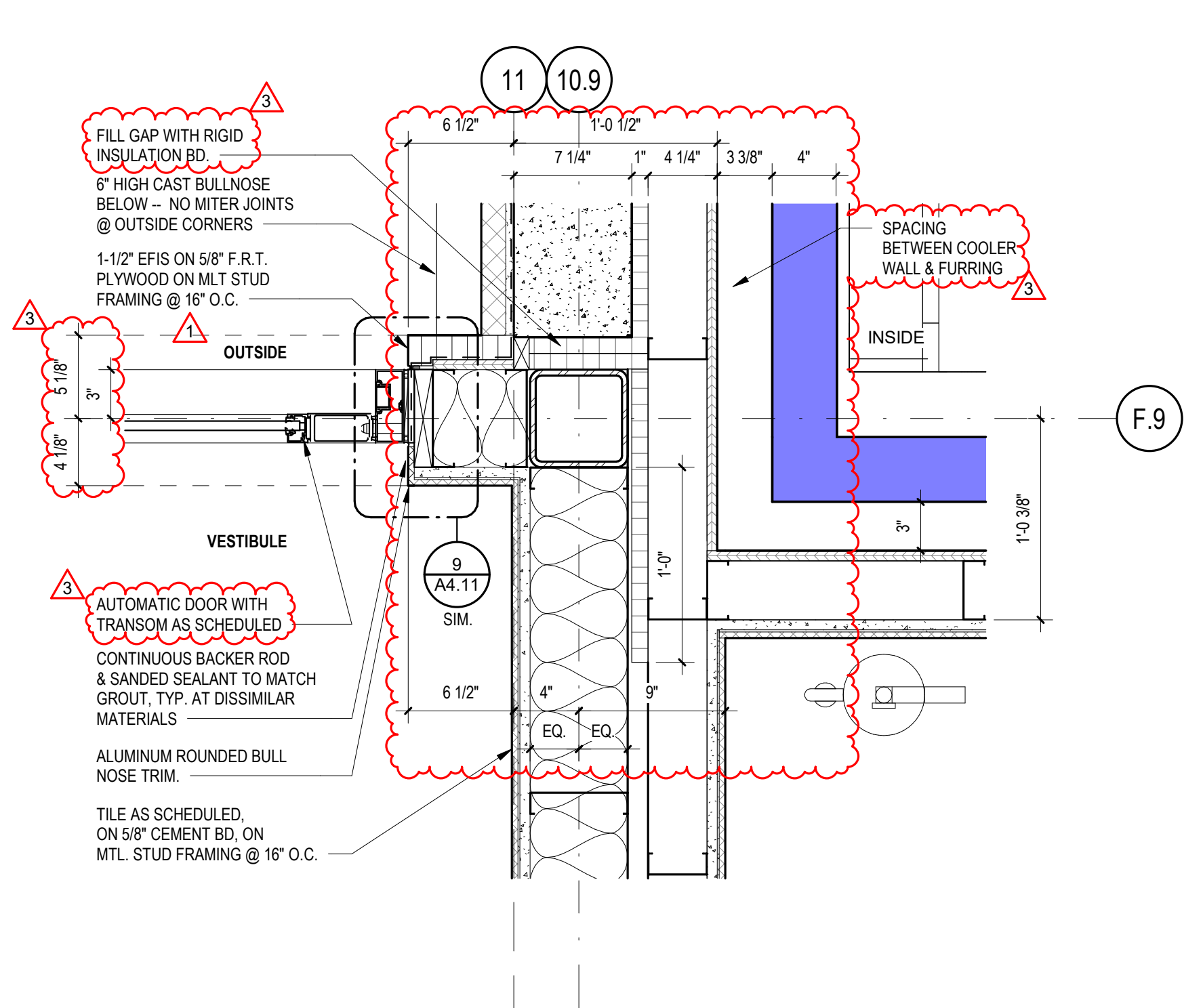
8 COL. DETAIL @ STOREFRONT 1 1/2" = 1'-0"



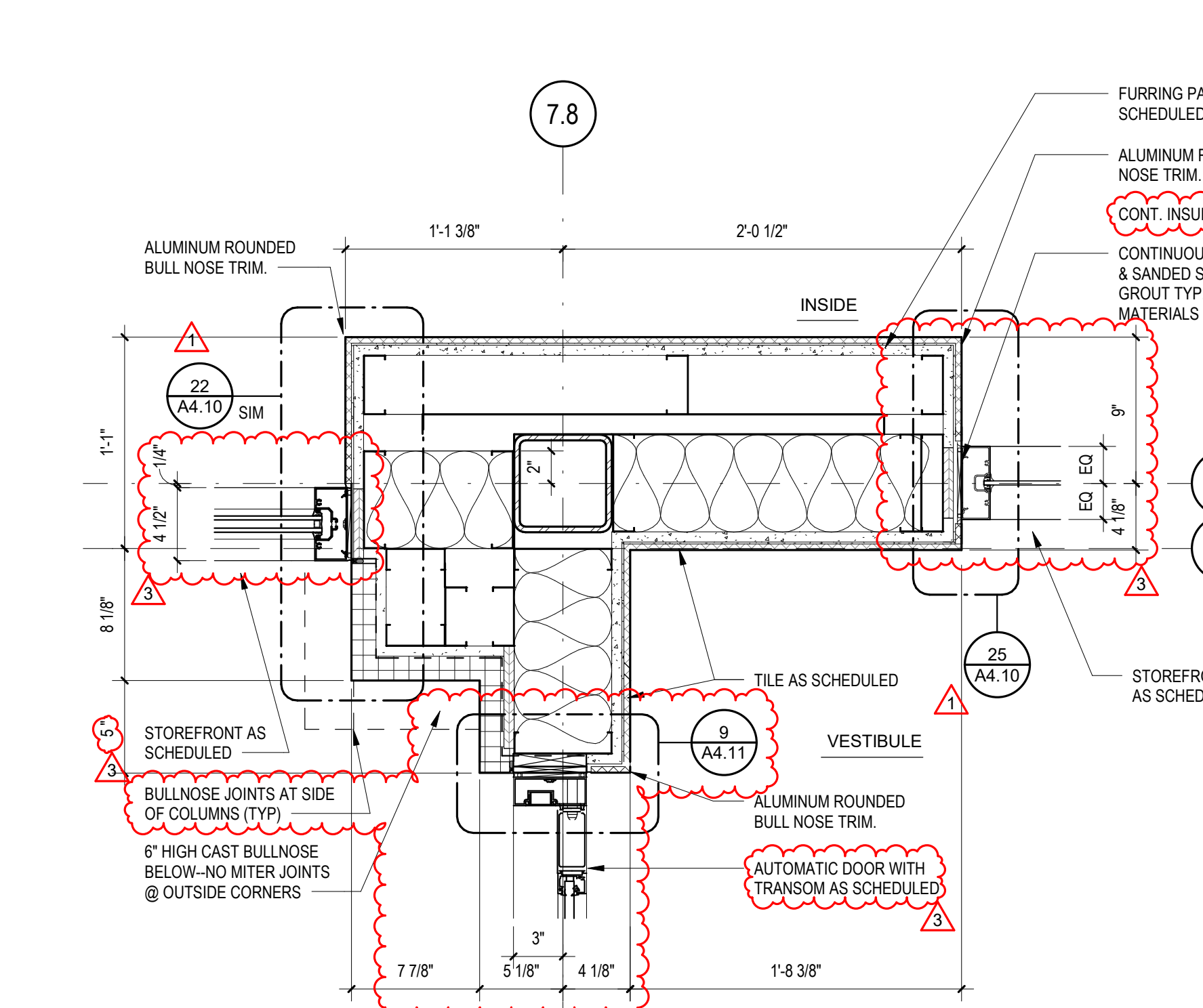
3 COLUMN DETAIL @ STOREFRONT VESTIBULE 100 1 1/2" = 1'-0"



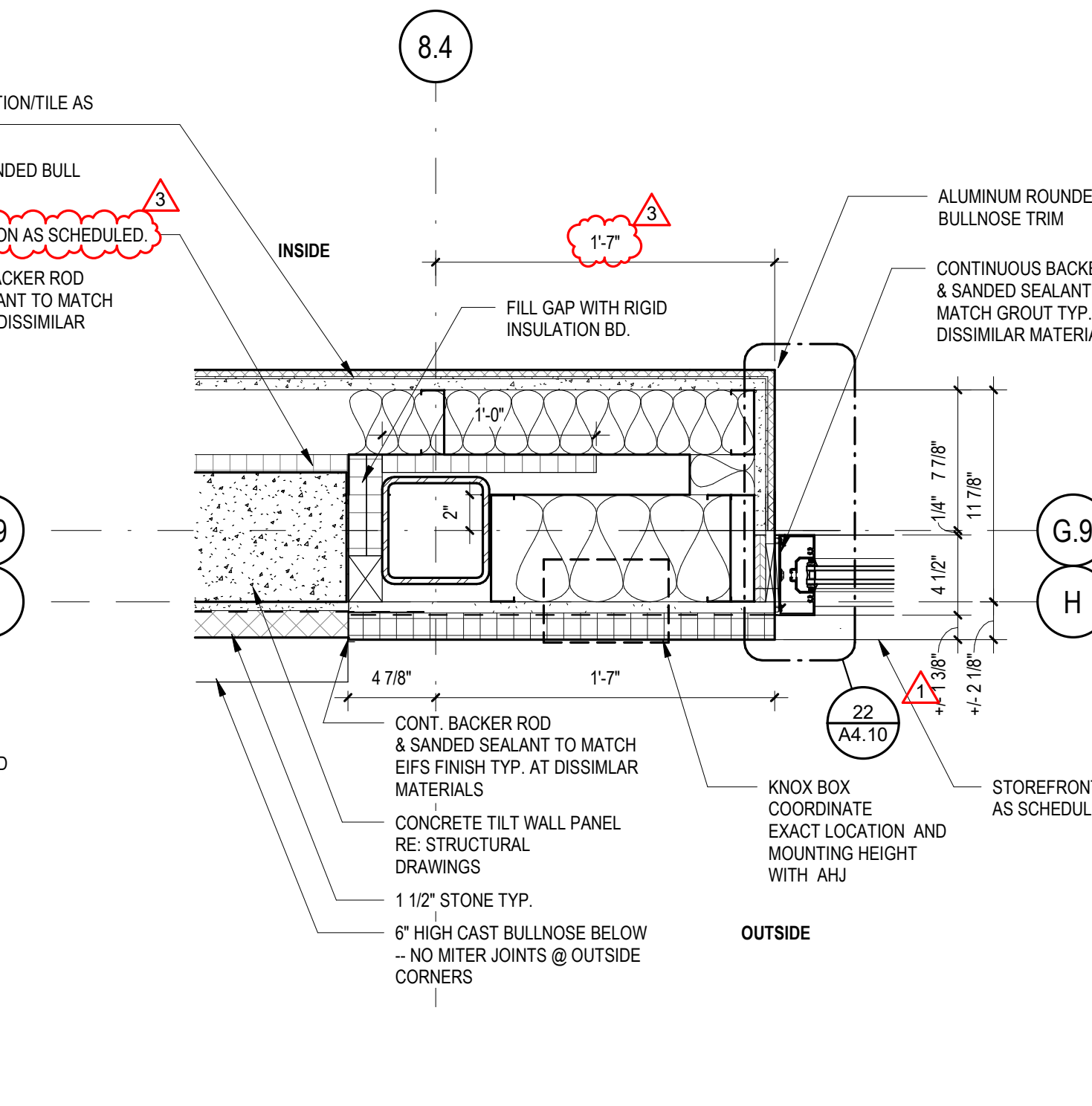
15 COLUMN DETAIL @ EXTERIOR 1 1/2" = 1'-0"



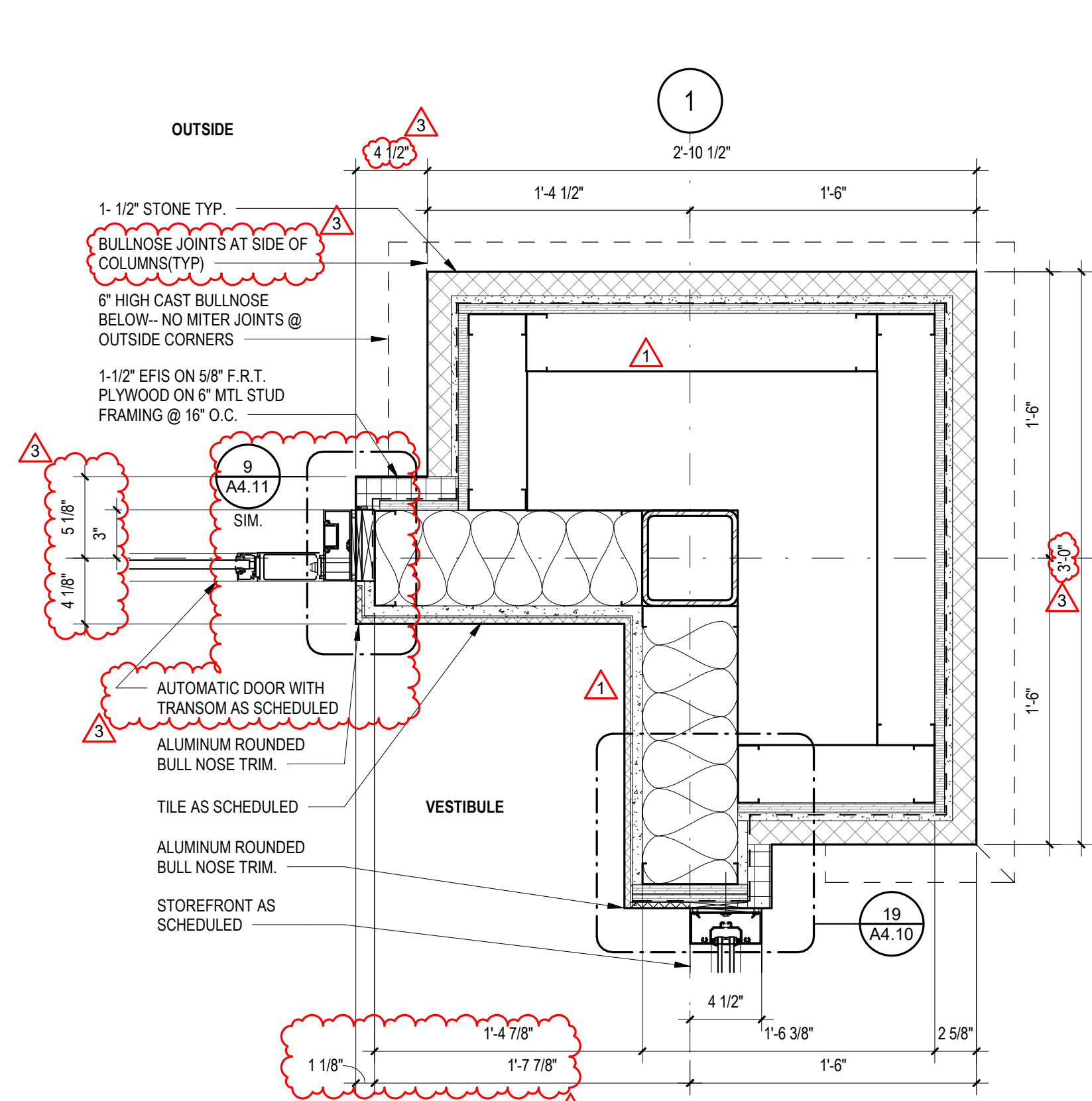
11 COLUMN DETAIL @ VESTIBULE102 LEFT CORNER 1 1/2" = 1'-0"



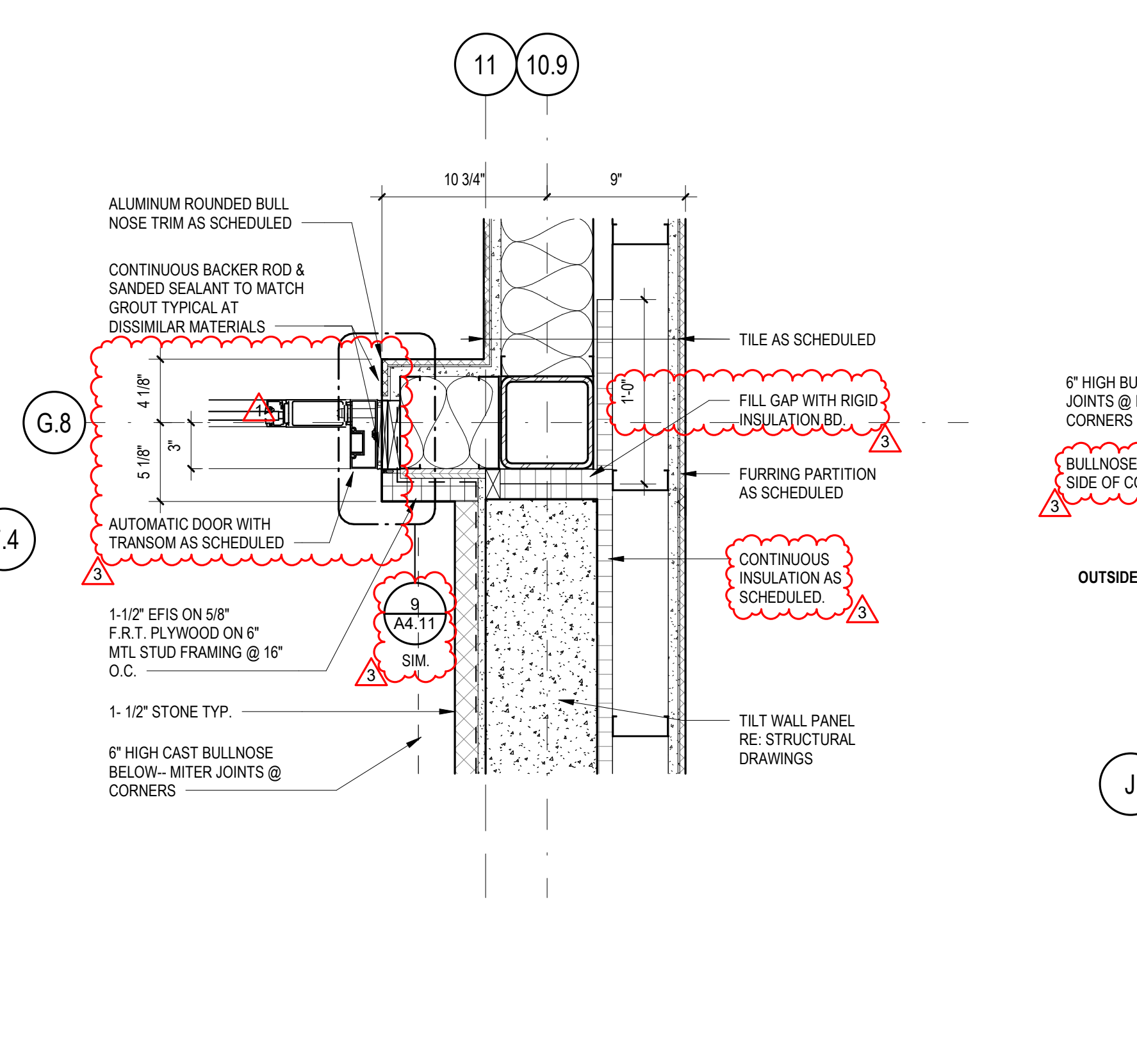
5 COLUMN DETAIL @ VESTIBULE100 CORNER 1 1/2" = 1'-0"



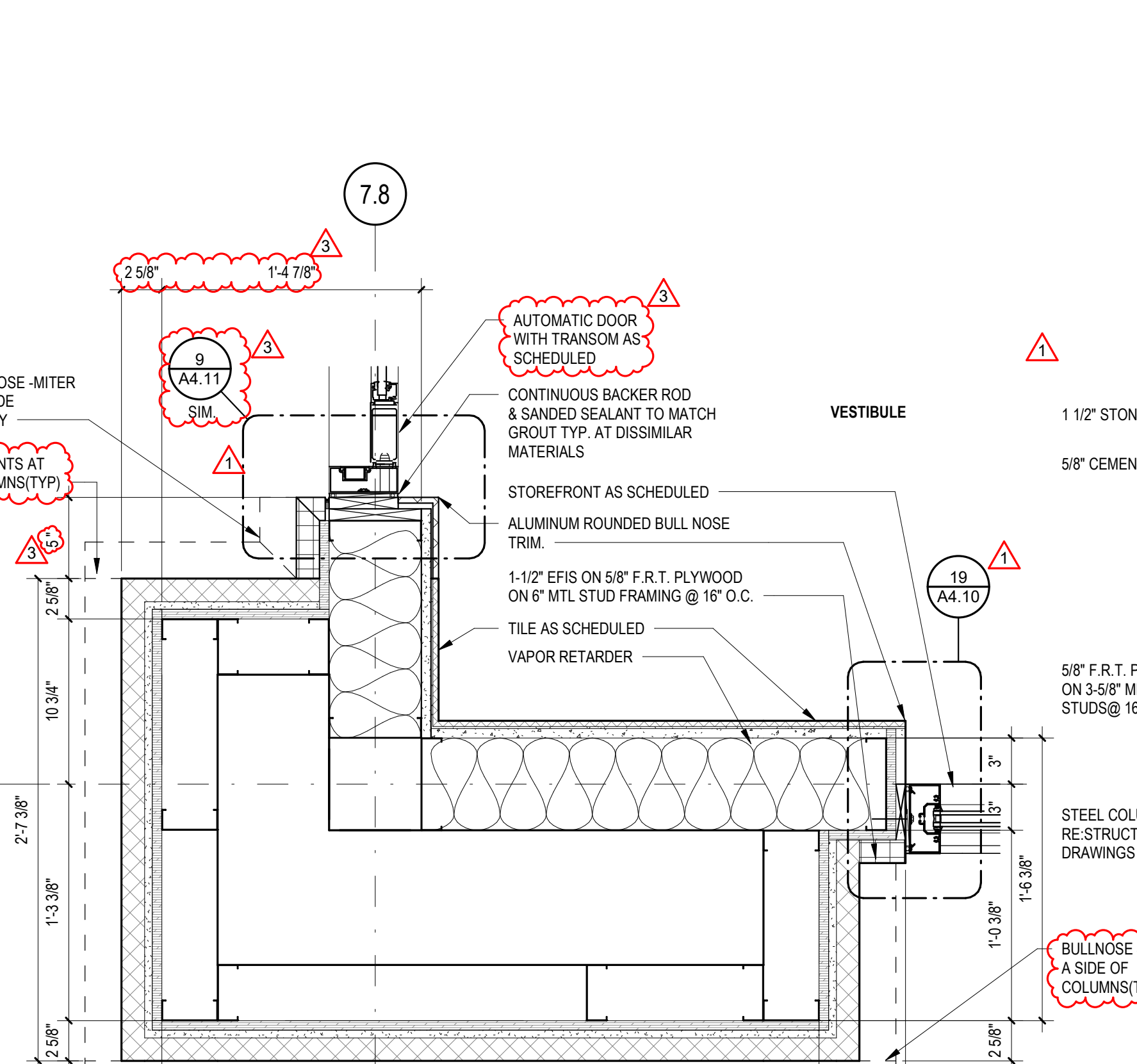
2 JAMB DETAIL 1 1/2" = 1'-0"



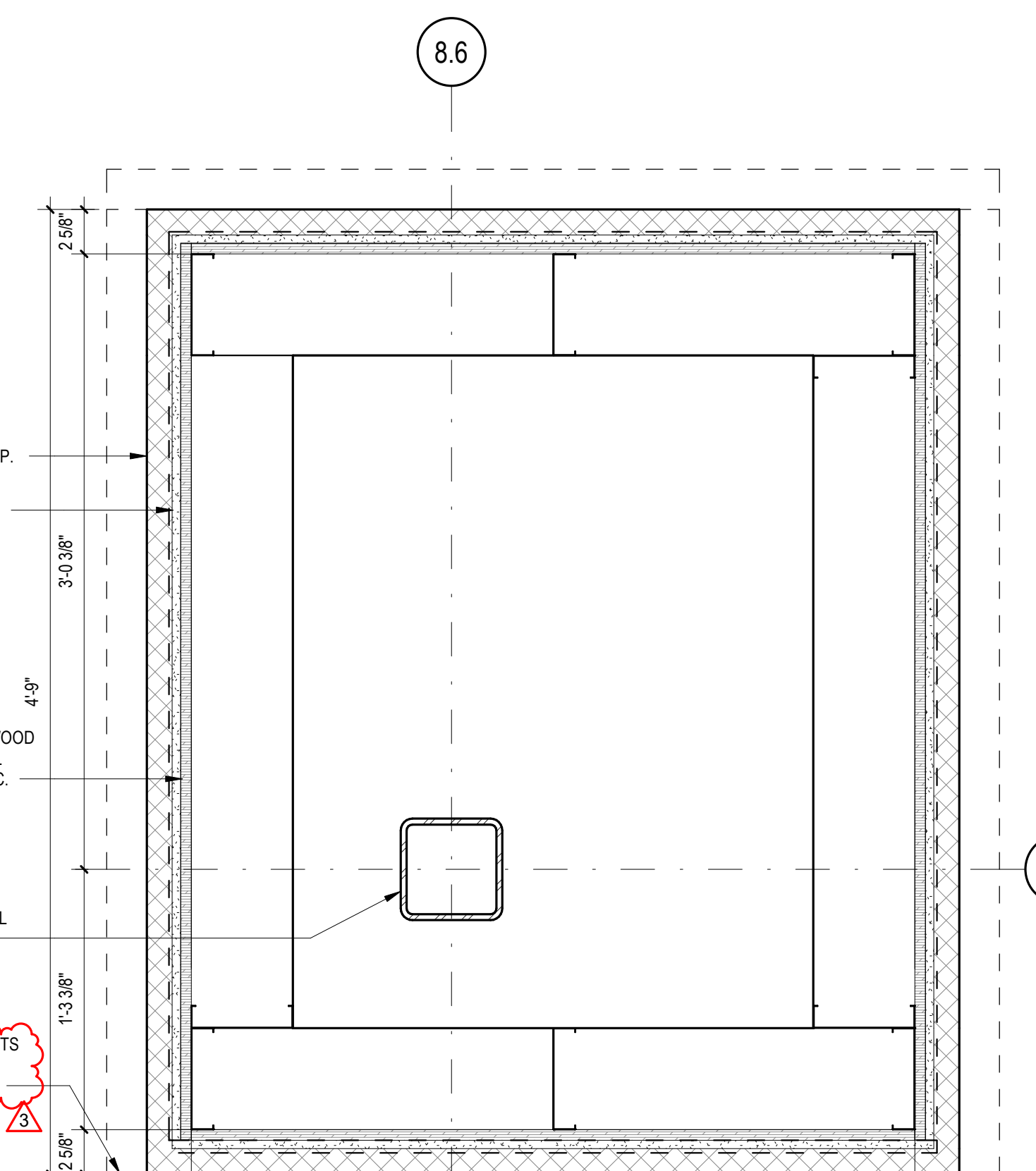
14 COLUMN DETAIL @ VESTIBULE 1 1/2" = 1'-0"



10 COLUMN DETAIL @ VESTIBULE102 RIGHT CORNER 1 1/2" = 1'-0"



4 COLUMN DETAIL @ VESTIBULE 100 1 1/2" = 1'-0"



1 COLUMN DETAIL @ EXTERIOR VESTIBULE 100 1 1/2" = 1'-0"