

Interior Design

Scheme D



APRIL 2024

Interior Design Scheme D



ALL ROOM TYPES

COLLECTION 1A



Sofa
Daniel Paul #AF-RD20004-S
78W x 36D x 37H

Loveseat
Daniel Paul #AF-RD-20004-LS
52W x 36D x 37H

Full Sleeper
Daniel Paul #AF-RD-20004-FSL-CLM
72W x 36D x 37H

Chair
Daniel Paul #AF-RD20005-LC
30W x 34D x 38H

Ottoman
Daniel Paul #AF-RD20005-OTT
27W x 21D x 19H



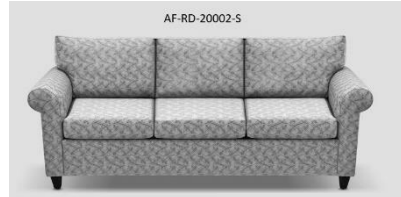
Desk Chair (Tall Back)
Daniel Paul #AF-RD2006-Tall Back
21W x 27D x 39-42H



AF-RD-20004-LS



COLLECTION 1B



AF-RD-20002-S

Sofa
Daniel Paul #AF-RD20002-S
78W x 36D x 37H

Loveseat
Daniel Paul #AF-RD-20002-LS
52W x 36D x 36H

Full Sleeper
Daniel Paul #AF-RD-20002-FSL-CLM
72W x 36D x 36H

Chair
Daniel Paul #AF-RD20002-LC
36W x 36D x 37H

Ottoman
Daniel Paul #AF-RD20002-OTT
27W x 21D x 19H



Desk Chair (Tall Back)
Daniel Paul #AF-RD2006-Tall Back
21W x 27D x 39-42H



AF-RD-20002-LS



AF-RD-20002-LC



Chair with Hiding Ottoman
Daniel Paul #AF-6124-OTT
28W x 36D x 38H



Bench
Daniel Paul #AF-6206-44
44W x 19.5D x 19H

Dark	
Pionite	
Witchcraft	
WX421-H	
Light	
Arborite W134VL	
Cognac Curly	
Anigre	
Arborite W430VL	
Pecan Tekka	



Counter Stool
Daniel Paul #AF-3427-CS
18W x 24D x 41H; 27SH
Bar Stool
Daniel Paul #AF-3427-BS
18W x 24D x 44H; 30SH



Side Chair
Daniel Paul #AF-3426-SC
18.5W x 24D x 33H

For TLF's – USE Stools ONLY from Casegoods (all WOOD)

	Picking the Right Size Bar Stool			
	Dining Chair	Counter Stool	Bar Stool	Tall Bar Stool
Stool (Seat) Height	17"-23"	24"-29"	30"-36"	34"-36"
Table Height	28"-30"	34"-40"	40"-46"	44"-46"



Counter Height Stools



Bar Height Stools



Extra Tall Bar Stools

Do NOT Mix Collections

COLLECTION 2A



Sofa
Stylus (Yoder) #Metro Sofa
79W x 38D x 35H

Loveseat
Stylus (Yoder) #Metro Loveseat
56W x 38D x 35H

Full Sleeper
Stylus (Yoder) #Metro Double Sleeper
71W x 38D x 35H

Chair
Stylus (Yoder) #Link Chair
30W x 34D x 40H

Ottoman
Stylus (Yoder) #Zora Ottoman
22W x 18D x 18H



Desk Chair (Tall Back)
Stylus (Yoder) #7001 ST- NO ARMS
23.5W x 23D x 40-46.5H



COLLECTION 2B



Sofa
Stylus (Yoder) #Diaz Sofa
84W x 37D x 36H

Loveseat
Stylus (Yoder) #Diaz Loveseat
61W x 37D x 36H

Full Sleeper
Stylus (Yoder) #Diaz Double Sleeper
76W x 37D x 36H

Chair
Stylus (Yoder) #Mel Chair
33W x 33D x 37H

Ottoman
Stylus (Yoder) #Zora Ottoman
22W x 18D x 18H



Desk Chair (Tall Back)
Stylus (Yoder) #7001 ST- NO ARMS
23.5W x 23D x 40-46.5H



Chair with Hiding Ottoman
Stylus (Yoder) #Lilo-Ott
30W x 33D x 34H



Bench
Stylus (Yoder) #Armless Luggage Bench
44W x 20D x 18H

Dark	
Pionite	
Witchcraft	
WX421-H	
Light	
Arborite W134VL	
Cognac Curly	
Anigre	
Arborite W430VL	
Pecan Tekka	



Counter Stool
Stylus (Yoder)
#Joey Counter Stool
19W x 22D x 39H; 24SH

Bar Stool
Stylus (Yoder)
#Joey Bar Stool
19W x 22D x 45H; 30SH



Side Chair
Stylus (Yoder) #Joey
20W x 24D x 38H

For TLF's – USE Stools ONLY from Casegoods (all WOOD)

	Picking the Right Size Bar Stool			
	Dining Chair	Counter Stool	Bar Stool	Tall Bar Stool
Stool (Seat) Height	17"-23"	24"-29"	30"-36"	34"-36"
Table Height	28"-30"	34"-40"	40"-46"	44"-46"



Counter Height Stools



Bar Height Stools



Extra Tall Bar Stools



Upholstery Collection Options – STYLUS (Yoder)

COLLECTION 3A



Sofa
Vision (JMB) #VAJAS-S1-XXX (Finish number as noted below)
78W x 34.5D x 38.5H.



Loveseat
Vision (JMB) #VAJAS-LS1-XXX
53.5W x 34.5D x 38.5H

Full Sleeper
Vision (JMB) #VAJAS-FS1-XXX
68.5W x 34.5D x 38.5H
Full Sleeper with Leggett & Platt mechanism and upgraded 6" Mattress



Desk Chair (Tall Back)
Vision (JMB) #VACOR-626
20W x 26D x 33-36H



Chair
Vision (JMB) #VAJAS-LC1-XXX
30.5W x 34.5D x 38.5H



Ottoman
Vision (JMB) #VAJAS-OT1-XXX
24W x 21D x 18H
Ottoman with sewn box seat and tapered legs

COLLECTION 3B



Sofa
Vision (JMB) #VAASB-S1-XXX
78W x 36D x 36H



Loveseat
Vision (JMB) #VAASB-LS1-XXX
54W x 36D x 36H

Full Sleeper
Vision (JMB) #VAJAS-FS1-XXX
70W x 36D x 36H
Full Sleeper with Leggett & Platt mechanism and upgraded 6" Mattress



Desk Chair (Tall Back)
Vision (JMB) #VACOR-626
20W x 26D x 33-36H



Chair
Vision (JMB) #VAASB-LC1-XXX
34W x 36D x 36H



Ottoman
Vision (JMB) #VAASB-OT1-XXX
27W x 22D x 18H



Chair with Hiding Ottoman
Vision (JMB) #VAHUD-CO1-XXX
33W x 34D x 33H



Bench
Stylus (Yoder) #Armless Luggage Bench
44W x 20D x 18H

003 = Dark
Pionite
Witchcraft
WX421-H

001 = Light
Arborite W134VL
Cognac Curly
Anigre

002 = Medium
Arborite W430VL
Pecan Tekka



Counter Stool
Vision (JMB)
#VAARL-CS1-XXX
18.5W x 19.5D x 26H



Side Chair
Vision (JMB) #VAHOB-DN2-XXX
20W x 25D x 39H

For TLF's – USE Stools ONLY from Casegoods (all WOOD)

	Picking the Right Size Bar Stool			
	Dining Chair	Counter Stool	Bar Stool	Tall Bar Stool
Stool (Seat) Height	17"-23"	24"-29"	30"-36"	34"-36"
Table Height	28"-30"	34"-40"	40"-46"	44"-46"



Bar Stool
Vision (JMB)
#VAARL-BS1-XXX
18.5W x 19.5D x 30.5H

Fabric Options for:

- Sofa
- Sleeper Sofa
- Loveseat
- Bench



Ennis Fabric – Pattern: MONRO34
 Monroe, Color: 34 Turquoise.
 Repeat: 0" V, 0" H. Width: 56".
 Finish: Endurepel Shield



DVP - Pattern: Jeanne;
 Color: Lemongrass.
 Width: 54".
 Finish: Crypton.



Fabricut -Pattern: Reinvent; Color:
 Aegean
 Repeat: 0" V, 0" H. Width: 54".
 Finish: Soil and Stain Repellent

Fabric Options for:

- Sofa
- Sleeper Sofa
- Loveseat
- Bench
- Side Chair
- Bar/Counter Stool



Kravet Sta-Kleen Vinyl -
 Pattern: Abilene;
 Color: 16 Dune
 Repeat: 0" V, 0" H. Width: 54"

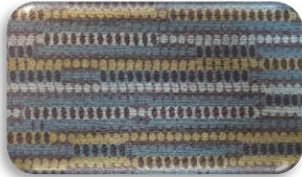
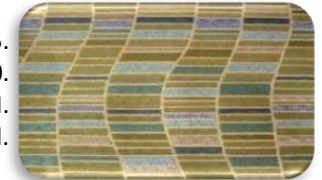
Fabric Options for:

- Occasional Chair
- Bench
- Side Chair
- Bar/Counter Stool



Kravet Crypton – Pattern: #32927
 Missing Link; Color: 316 Tidal
 Repeat: 10" V, 3.5" H. Width: 55".
 Finish: Crypton.

Kravet – Pattern: Sway Me 32245.
 Color: Lagoon 530.
 Repeat: 7"V x 4.5" H.
 Width: 54". Finish: Nanotex, Latex backed.



DVP Crypton – Pattern: Riker
 J5831D ; Color: Teal
 Repeat: 15V, 27H
 Width: 54". Finish: Crypton
 Incase with Acrylic Backing.

DVP (WW) - Pattern: Quarter Circles
 Color: Aloe
 Repeat: 7.35V x 6.8H
 Width: 54". Finish: Crypton Incase
 with Acrylic Backing.



DVP – Pattern: J5823B; Color: Cloud #3
 Repeat: 12.7" V, 9" H. Width: 54".
 Finish: Incase

DVP Crypton – Pattern: Twiggs;
 Color: Cream
 Repeat: V: 5" X H: 5". Width:
 54". Finish: Crypton.



Valance represents style only; color may not be exact.



DRAPERY

Drapery Valance with Black Out Liner

100% Polyester Brushed Microfiber in AF Custom Lime

Tailored Style, Inverted Box Pleats 16-18" on Center, 2PBO Lined FR

Construction per Air Force Standards. Fabrication: Tailored Style, Inverted Box Pleats approx 16-18" on Center, Soft Loop Velcro on Face & Returns, 2PBO Lined FR, Mounted on white painted wood dust cap with attached Stiff Hook Side Velcro for Valance attachment. 1.5" Blind Stitch Side Hems & 3" Single Blind Stitch Bottom Hem. Fabric: Passes NFPA 701

ALL DRAPES/SHEERS TO BE SILL LENGTH UNLESS OTHERWISE SPECIFIED

Full Operable Drapes with Black Out Liner

Samelson – Pattern: Texture Tricolor; Color: #10; Basecloth: Crescendo

Operable Drapery Pairs or One-Way Draw Panels with sewn white in 2PBO lining; Sill Length (unless circumstances require other); One Finger Pinch Pleat 1.5:1 fullness; Pattern match at seams; Hidden Batons. Construction per Air Force Standards. Fabrication: 1.5" Double Turned Blind Stitched Side Hems, Double 4" bottom hems, Double 4" pleated top hems, 100% polyester Perma Cord Thread. Multiple width draperies shall be pleated so that joining seams are hidden behind pleats. Mounted on Kirsch 94003 or Equal rods.

Full Operable Sheers

Pattern: Seeded Snow Voile ; Color: Marble

Operable Sheer Pairs or One-Way Draw Panels; Unlined; Sill Length (unless circumstances require other); One Finger Pinch Pleat 1.5:1 fullness; Hidden Batons. Construction per Air Force Standards. Fabrication: 1.5" Double Turned Blind Stitched Side Hems, Double 4" bottom hems, Double 4" pleated top hems, 100% polyester Perma Cord Thread. Multiple width draperies shall be pleated so that joining seams are hidden behind pleats. Mounted on Kirsch 94003 or Equal rods.



Bedding 1



**Accent Wall Paint –
Headboard Wall**
SW6415 Hearts of Palm



Bed Cover Throw – AF Custom , Maverick, Buttercream 1.

Throw Style reversible single layer bed cover. Custom Woven Jacquard (no batting nor quilting). Custom Pattern: Maverick, Color: *Per Scheme*. 100% Polyester. Edge detail: 3" folded over edge (C) with faux mitered squared corners. 10 Stitches per inch/Single stitched/Polyester thread to match fabric color. Fabric is not directional.

Bedding 2



**Accent Wall Paint –
Headboard Wall**
SW6136 Harmonic Tan



Bed Cover Throw – AF Custom , Maverick, Lime 1.

Throw Style reversible single layer bed cover. Custom Woven Jacquard (no batting nor quilting). Custom Pattern: Maverick, Color: *Per Scheme*. 100% Polyester. Edge detail: 3" folded over edge (C) with faux mitered squared corners. 10 Stitches per inch/Single stitched/Polyester thread to match fabric color. Fabric is not directional.

Bed Skirt

Warp & Phil - Pattern: Cabana; Color: Gold
Tailored 5 pleat bed skirt fabricated per Air Force Standards. Drop from edge of box spring to 1/2" AFF. Top deck 4" banding, with 3" retaining strip sewn across the entire width of header. Fabricator to validate drop requirements prior to fabrication.





Arkansas #T5424A-L001-O-LS01-SW01-CD01-M (5424EPL) – Desk Lamp

25" Brushed Nickel Desk Lamp with convenience Outlet and rocker base switch, 8' silver 45° 3-prong grounded cord, one outlet, medium base socket. Recommend one 27-watt CFL spring bulb or 1100 lumen LED bulb.

Note: For sale only to bases with 110-volt wiring.



Arkansas #T5665C-L001-O-LS01-SW01-CD01-M (5665EPL)

27" Brushed Nickel Table Lamp with convenience outlet and on/off rocker base switch, 8' 45° 3-prong cord, one outlet. Includes 6"x18"x11.5" Cream Linen Hardback Shade. Recommend 1100 lumen LED bulb. **Note: For sale only to bases with 110-volt wiring.**



Arkansas #T6230A-L001-A001-O-LS01-SW01-CD01-M (6230EPL)

27"H Brushed Nickel with Clear Cylinder Acrylic column Table Lamp, medium base socket, ON/OFF rocker base switch at base, one outlet, 8' 45° 3-prong cord, 10x11x11 Cream Linen hardback shade, recommend 1100 lumen LED bulb. **Note: For sale only to bases with 110-volt wiring.**



Arkansas #T5631A-L001-P051-O-LS03-SW02-CD01-M (5631E-US) - Night Stand between

Twins ONLY 27" Table Lamp with Metallic Silver Column and Brushed Nickel Accents, two medium sockets, dual on/off rocker base switch, one outlet, 8' 45° 3-prong grounded cord, two 6x11x9 Cream Linen Hardback Shades. Recommend two 1100 lumen LED bulb.

Note: For sale only to bases with 110-volt wiring.



Arkansas #F5878A-L001-LS01-SW07-CD20-M (5878F)

65" Brushed Nickel Floor Lamp with on/off rotary socket switch, 11' silver 45° power cord. Includes 4.75"H, 12"W Frosted White Acrylic Shade. Recommend two 1100 lumen LED bulb.

Note: For sale only to bases with 110-volt wiring.



Arkansas #F6024A-L001-A001-LS01-SW13-CD20-M (6024 FPL)

61" Brushed Nickel with Clear Cylinder Acrylic column floor lamp, medium base socket with push thru socket switch, 15' Silver 45-degree cord, Shade Cream Linen, Size: 14x15x10. Recommend 1100 lumen LD bulb. **Note: For sale only to bases with 110-volt wiring.**



Fangio #1452PN – Desk Lamp

24.5" Polished Nickel LED Table Lamp with rocker base switch and one 3-rong electrical convenience outlet. 8' 3-prong grounded cord. 6W LED Bulb.

Note: For sale only to bases with 110-volt wiring.



Fangio #W-15268

30" Brushed Steel Table Lamp with rocker base switch and one 3-rong electrical convenience outlet. 8' 3-prong grounded cord. E26 socket base, A19 bulb, 100W. Cream Linen hardback shade 8x15x12.

Note: For sale only to bases with 110-volt wiring.



Fangio #1491

30.5"H Brushed Steel table lamp with rocker base switch and one 3-prong electrical convenience outlet. 8' 3-prong grounded cord. E26 socket base, A19 Bulb, 100W. Cream Linen hardback shade 12x15x10.

Note: For sale only to bases with 110-volt wiring.



Fangio #13758 Nightstand Lamp for between

Twins ONLY 28"T x 21"W Table Lamp Brushed steel, two medium sockets, dual on/off rocker base switch, one 3-prong electrical convenience outlet. E26 socket base. 8' 3-prong grounded cord, two Cream Linen Hardback Shades. Recommend two 9.5W, 800 lumen A19 LED bulb.

Note: For sale only to bases with 110-volt wiring.



Fangio #1436BS

72" Brushed Steel Floor Lamp with 4-Way switch. 12' silver 3-prong grounded cord. E26 socket base, A19 bulb, 1-100W & 1-40W. Frosted White Glass Top Shade: 13" dia x 5"H, Side Shade: 5" dia x 4.5"H.

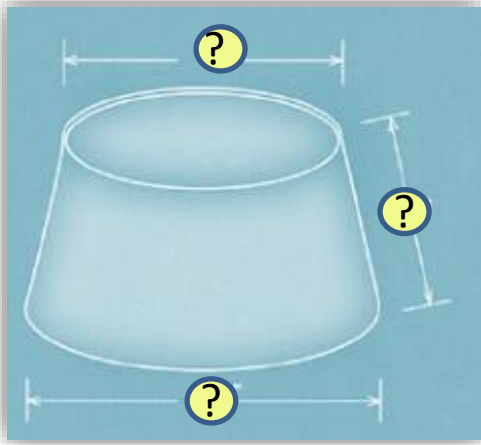
Note: For sale only to bases with 110-volt wiring.



Fangio #1638

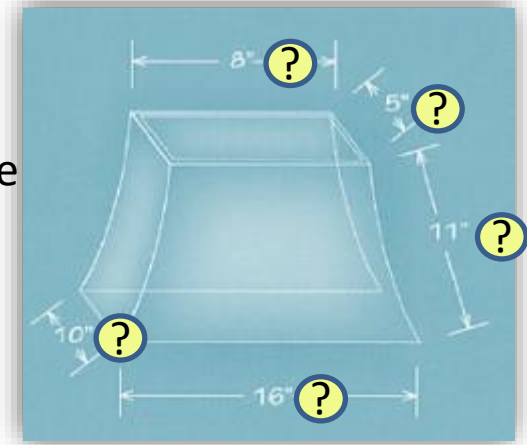
60" Brushed Steel Tapered Column Metal Floor Lamp. Push thru socket switch. 12' silver 3-prong grounded cord. E26 socket base, 1-150W. Cream Linen hardback shade 16x18x10.

Note: For sale only to bases with 110-volt wiring.



To get the appropriately sized replacement shade:

- Provide the measurements for the yellow ? circles as noted on this shade diagrams on this slide.
- Provide the type/style of harp on the existing light fixture.



Harp

Uno Up

Uno Down



~ Replacement shades will ONLY be ordered in Cream Linen hardback shades.

To order new lamp shades provide the following:

- ~ Photo of shade and lamp
- ~ Photo of inside the lamp (without shade)
- ~ Dimensions as outlined above
- ~ Type of harp

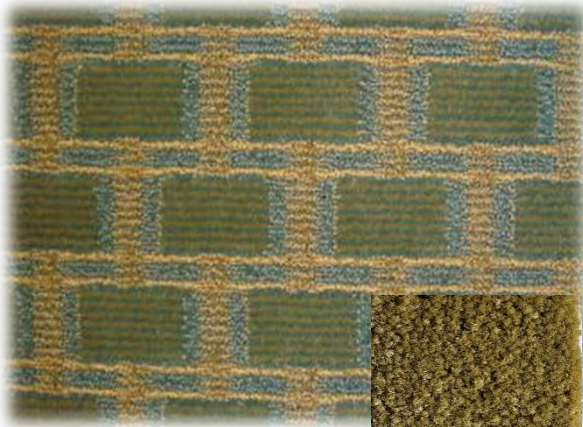
Interior Design



FLOORING

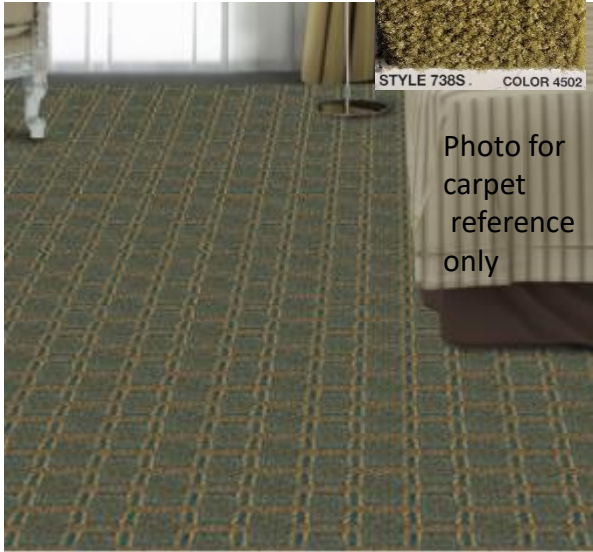
Carpet: Lexmark – Pattern: 1132; Color: 2310 (Lexmark 352 Solstice 450) with Attached Cushion Back.

Carpet Base: Lextron 738S-4502; Action Back; bind with carpet tape in a complimentary color.



STYLE 738S . COLOR 4502

Photo for carpet reference only



Carpet: Lexmark – Pattern: 1432; Color: 2400 (Lexmark 982 Venice 252) with Attached Cushion Back.

Carpet Base: Lextron 738S-4502; Action Back; bind with carpet tape in a complimentary color.



STYLE 738S . COLOR 4502

Photo for carpet reference only



Carpet: Shaw - Pattern: After Hours 5B047; Color: New Moon 47100 with Attached Cushion Back.

Carpet Base: Shaw - After Hours 5B047-New Moon 47100; Action Back; bind with carpet tape in a complimentary color.



Photo for carpet reference only



AMTICO Vinyl Flooring - Glue down flexible vinyl flooring



Rubber Base

Use ONLY with **Medium** furniture selection.

LVT: Amtico AROW6990 Teak; Tick surface finish; 4 ½"W x 36"L plank with bevel edge profile.

BASE: Roppe Rubber Cove Base – 623 Nutmeg. Standard Cove, 700 Series. Specify 4"/4.5"/6"high. Order in 120' coils when possible.



Rubber Base
130
buckskin

Use ONLY with **Mission** furniture selection.

LVT: Amtico AROW7600 Vintage Teak; Tick surface finish; 4 ½"W x 36"L plank with bevel edge profile.

BASE: Roppe Rubber Cove Base – 130 Buckskin. Standard Cove, 700 Series. Specify 4"/4.5"/6"high. Order in 120' coils when possible.



Rubber Base
631
sahara

Use ONLY with **Light** furniture selection.

LVT: Amtico AROW7480 Spalted Beech; Tick surface finish; 4 ½"W x 36"L plank with bevel edge profile.

BASE: Roppe Rubber Cove Base – 631 Sahara. Standard Cove, 700 Series. Specify 4"/4.5"/6"high. Order in 120' coils when possible.



Rubber Base
182
toffee

Use ONLY with **Dark** furniture selection.

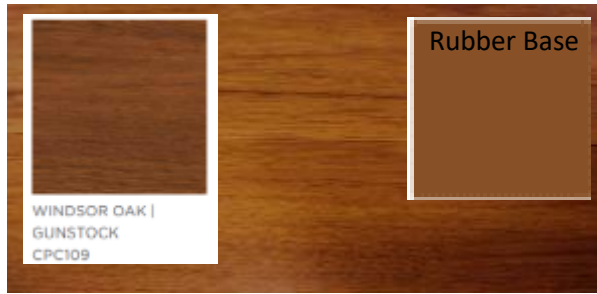
LVT: Amtico AROW7620 Wild Walnut; Tick surface finish; 4 ½"W x 36"L plank with bevel edge profile.

Base: Roppe Rubber Cove Base – 182 Toffee. Standard Cove, 700 Series. Specify 4"/4.5"/6"high. Order in 120' coils when possible.

Select correct height rubber base per type of renovation; coordinate with carpet base height.



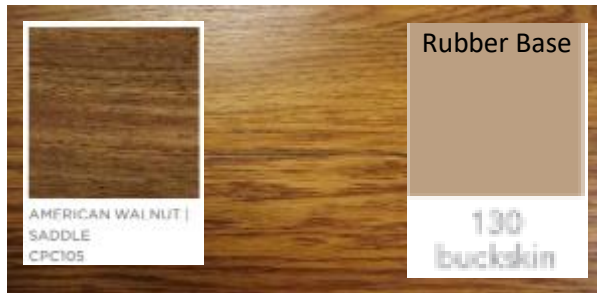
MANNINGTON Lock Tight Vinyl Flooring - Floating Ridged vinyl flooring



Use ONLY with **Medium** furniture selection.

LVT: Mannington Lock Tight, City Park Solid Core, Windsor Oak, Gunstock CPC109; 6"W x 36"L plank.

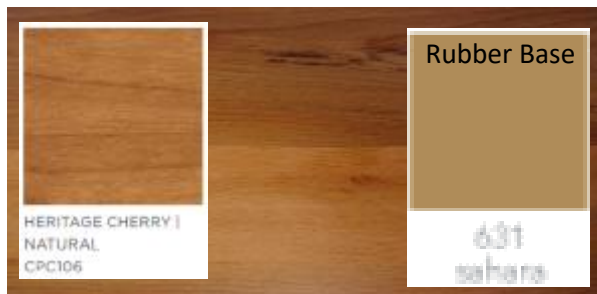
BASE: Roppe Rubber Cove Base – 623 Nutmeg. Standard Cove, 700 Series. Specify 4"/4.5"/6"high. Order in 120' coils when possible.



Use ONLY with **Mission** furniture selection.

LVT: Mannington Lock Tight, City Park Solid Core, American Walnut, Saddle CPC105; 6"W x 36"L plank.

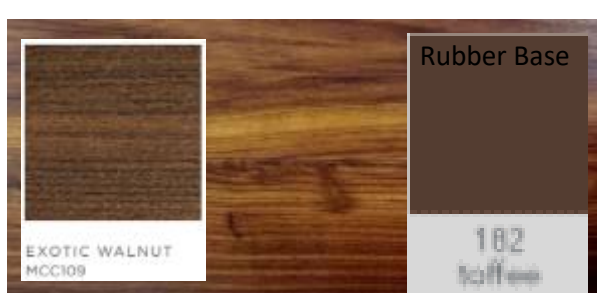
BASE: Roppe Rubber Cove Base – 130 Buckskin. Standard Cove, 700 Series. Specify 4"/4.5"/6"high. Order in 120' coils when possible.



Use ONLY with **Light** furniture selection.

LVT: Mannington Lock Tight, City Park Solid Core, Heritage Cherry, Natural CPC106; 6"W x 36"L plank.

BASE: Roppe Rubber Cove Base – 631 Sahara. Standard Cove, 700 Series. Specify 4"/4.5"/6"high. Order in 120' coils when possible.



Use ONLY with **Dark** furniture selection.

LVT: Mannington Lock Tight, Spacia Crown Collection Solid Core, Exotic Walnut MCC109; 7"W x 48"L plank.

Base: Roppe Rubber Cove Base – 182 Toffee. Standard Cove, 700 Series. Specify 4"/4.5"/6"high. Order in 120' coils when possible.

Select rubber base height per type of renovation; coordinate with carpet base height.

LOCKSSOLID FEATURES

- SUPERIOR HOLD STRENGTH**
No buckling or seam separation
- FEATURES QUANTUM GUARD HP WEARLAYER**
LIMITED TO YEAR WEAR WARRANTY
- AVOIDS ABATEMENT REQUIREMENTS**
- SAVE UP TO 20%-50%**
- FLOATING FLOOR INSTALLS OVER MOST EXISTING SURFACES**
 - concrete
 - tile
 - terrazzo
- AVOIDS MOISTURE REMEDIATION**
- 10 YEAR LIMITED COMMERCIAL WARRANTY**
 - 10 YEAR QUANTUM GUARD HP WARRANTY
 - 10 YEAR NO GAP WARRANTY




Mannington Lock Tight Floating Floor

Porcelain Floor and Wall Tile
 Dal Tile – Florentine; Color: Marfil FL07;
 Size: 12" x 12"; Matte Finish
 Other Uses:

Backsplash, Bathroom, Floor, Kitchen, Shower, Wall



EPOXY GROUT – Custom Tile Installation System: CEG-Lite
 Commercial 100% Solids Epoxy Grout;
 Color: 186 Khaki 
 GROUT JOINT SIZE: 3/16"

When walls ARE being painted use:

TILE BASE: DalTile – Florentine; Marfil P-43C9F
 3" x 12"; Matte Finish
 Porcelain Floor Bullnose Wall Tile

When walls are NOT being painted use:
 Rubber Base Solid:

Roppe 184 Almond or Johnsonite 129 Silk
 Height to be 4.5" or 6" as specified on the Site Specific
 depending on site situations



Fitness Flooring

EcoSurfaces 3.2mm – Desert Palm 2606
 Rubber Base: Roppe 4" Color: 624 Chameleon OR
 Johnsonite 4" Color: 45 Sandalwood



Mannington Commercial

Style: Halftime **Color:** Dean (DEAN)

Fiber: 100% Type 6,6 Nylon

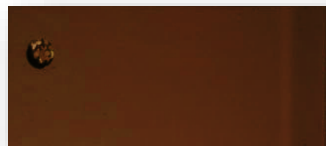
Secondary Backing: Infinity Modular; contains pre-consumer recycled content Certified NSF/ANSI – 140 Gold.

Installation: Monolithic

Size: 24"x24". **Made in USA**

Rubber Base:

Roppe Rubber Cove Base – 182 Toffee. Standard Cove, 700 Series. Specify 4"/4.5"/6" high. Order in 120' coils when possible.



Administration Carpet





Shaw – Style: 54693 Commons II; Color: 00700 Basketry



Shaw – Style: 54693 Commons II; Color: 00601 Cinnabark



Utility Stairwell

Johnsonite

Stair Treads with Integrated Riser (Rubber)

With Grip Tape Strip

45 Sandalwood

Tread/Riser/Stringer/Landing

Treads & Stringers (Rubber)

1/8" gauge in 45 Sandalwood

Select ONE style:

1. Raised Round Tread/Riser w/grit tape strip (VIRH-RD)
2. Raised Square Tread/Riser w/contrasting rubber strip (VIRH-SQ)

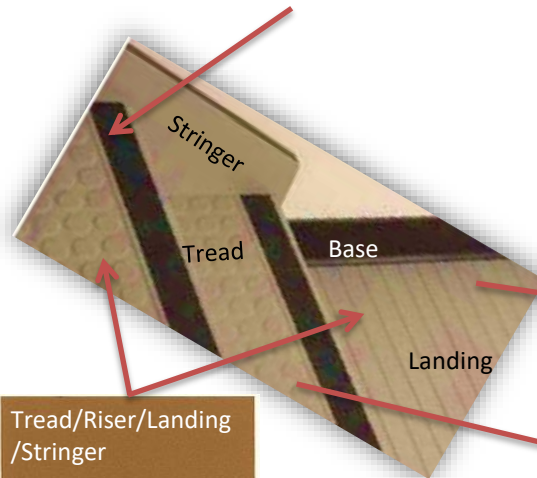
Landing Tile & Base (Rubber)

24" x 24" tile

6" base on landing when 10" stringer is installed.

Otherwise, use appropriate base height for existing installation.

Grit Tape



Tread/Riser/Landing
/Stringer

45 Sandalwood WB



RAISED ROUND



RAISED SQUARE

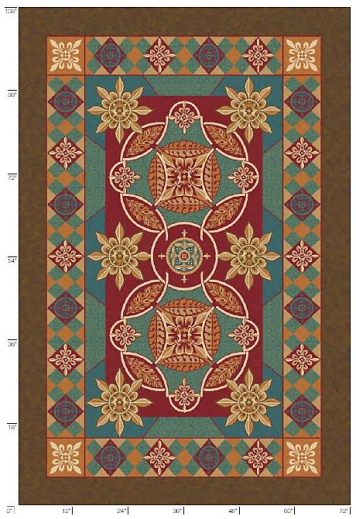
**Durkan –
Pattern: TALISMAN
Over 5'**



Runner



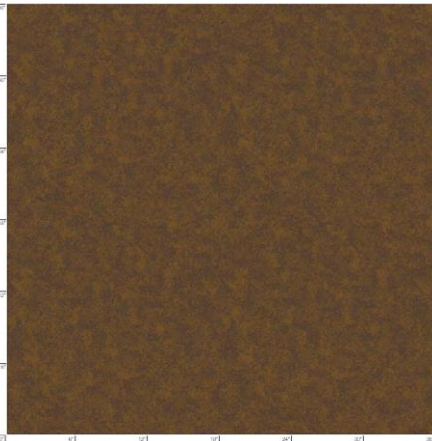
Medallion



Door Drop



Broadloom



Bleedout and Carpet Base

Over 5'0" Corridors

Durkan

- Runner – W3108 L0930604C
- Medallion – D64156 L0930013C
- Door Drop - D64097 L0930011C
- Broadloom – D64135 L0930013C
- Bleedout - D5020 L0928018C
- Carpet Base – D5020 L0928018C



Corridor Carpet

NOTE: The out-fill may vary on-site due to each building's layout requirements

**Durkan –
Pattern: TALISMAN
Under 5’**



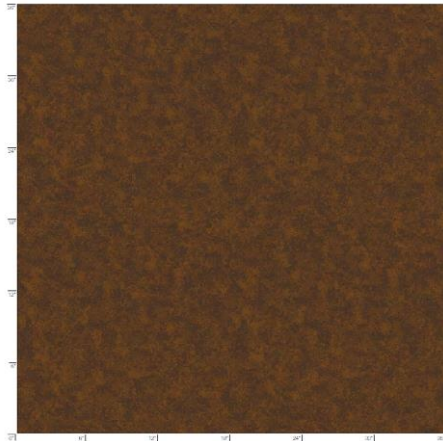
Runner



Medallion



Broadloom



Bleedout and Carpet Base

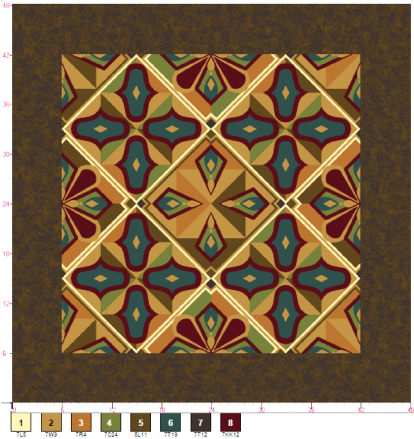


Over 5'0" Corridors

Durkan

- Runner – W3108 L0930604C
- Medallion – D64156 L0930013C
- Broadloom – D64135 L0930013C
- Bleedout - D5020 L0928018C
- Carpet Base – D5020 L0928018C

**Durkan –
Pattern:
ILLUMINATIONS
Over 5'**



Runner



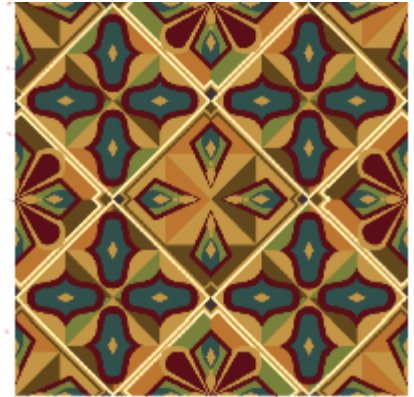
Medallion



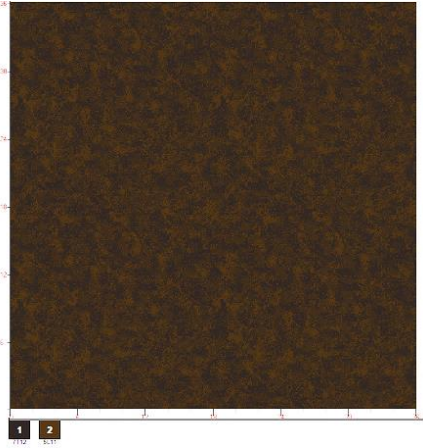
Over 5'0" Corridors

Durkan

- Runner – W3111 L0930602C
- Medallion – D64112 L0930006C
- Door Drop - D64113 L0930005C
- Broadloom – D64132 L0930007C
- Bleedout - D5020 L0928018C
- Carpet Base – D5020 L0928018C



Broadloom



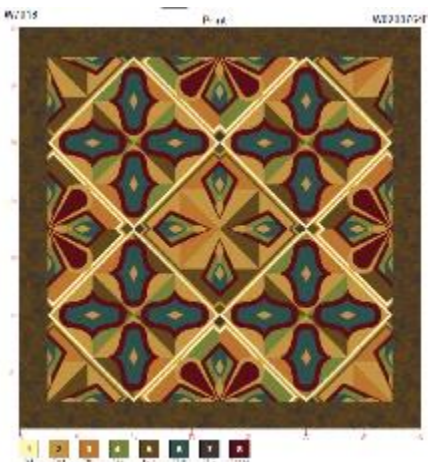
Bleedout and Carpet Base



Corridor Carpet

NOTE: The out-fill may vary on-site due to each building's layout requirements

**Durkan –
Pattern: ILLUMINATIONS
Under 5’**



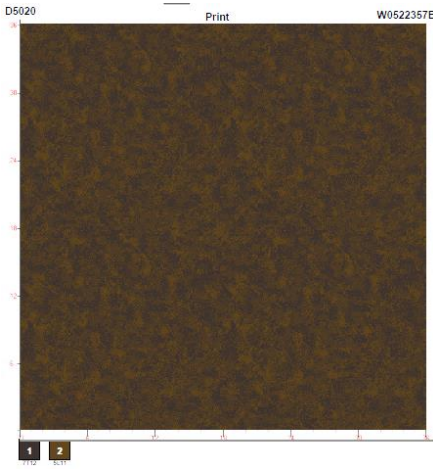
Runner



Medallion



Broadloom



Bleedout and Carpet Base



Over 5’0” Corridors

Durkan

- Runner – W3111 L0930602C
- Medallion – D64112 L0930006C
- Broadloom – D64132 L0930007C
- Bleedout - D5020 L0928018C
- Carpet Base – D5020 L0928018C

**Durkan –
Pattern:
LEXIA
Over 5’**



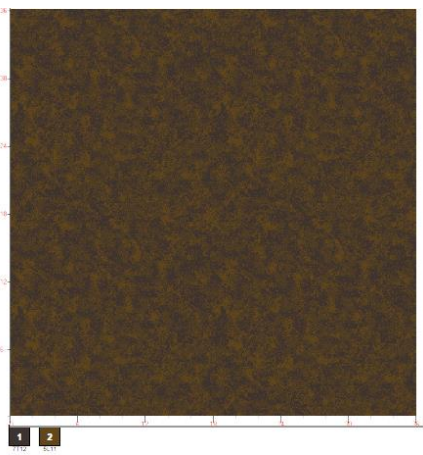
Runner



Broadloom



Medallion



Bleedout and Carpet Base



Door Drop

**Over 5’0” Corridors
Durkan**

- Runner – W5146 L0928601C
- Medallion – D64137 L0928016C
- Door Drop - D64136 L0828015C
- Broadloom – D66057 L0928017C
- Bleedout - D5020 L0928018C
- Carpet Base – D5020 L0928018C



Corridor Carpet

NOTE: The out-fill may vary on-site due to each building's layout requirements

**Durkan –
Pattern: LEXIA
Under 5’**



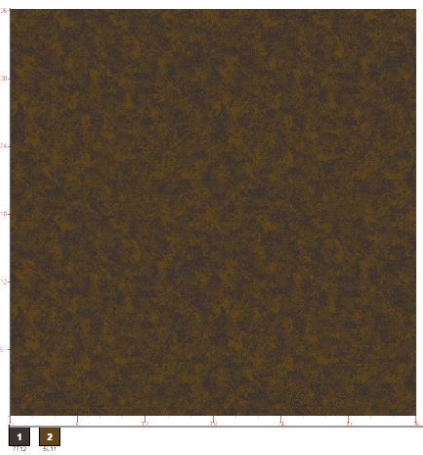
Runner



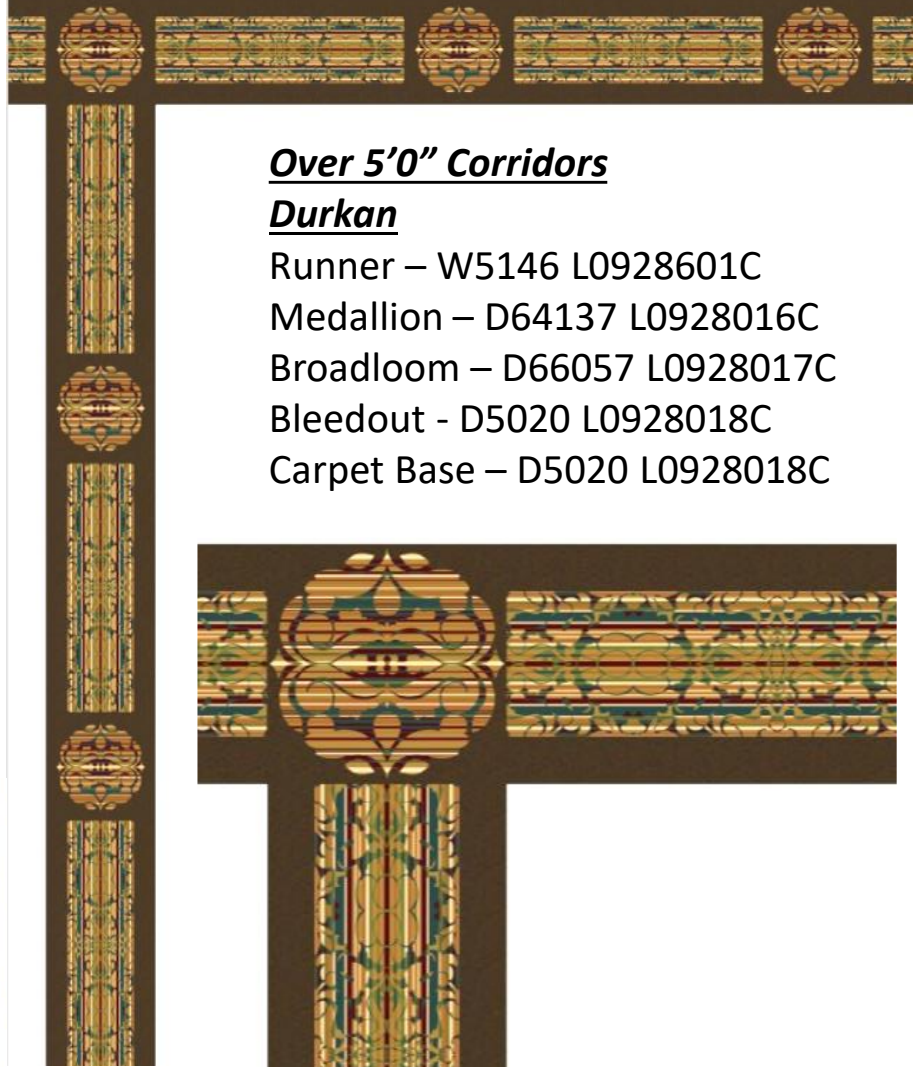
Broadloom



Medallion



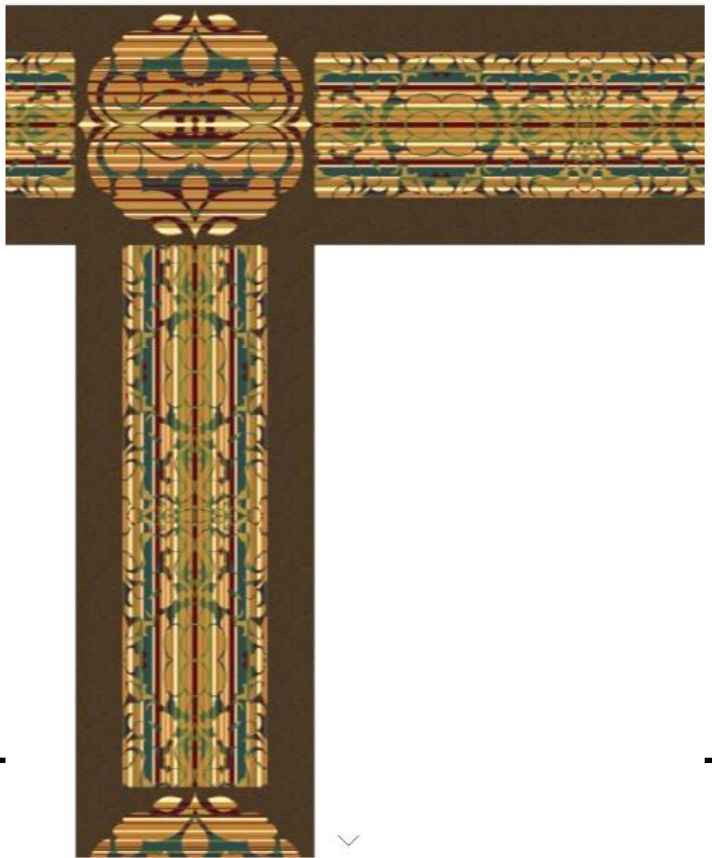
Bleedout and Carpet Base



Over 5’0” Corridors

Durkan

- Runner – W5146 L0928601C
- Medallion – D64137 L0928016C
- Broadloom – D66057 L0928017C
- Bleedout - D5020 L0928018C
- Carpet Base – D5020 L0928018C



Interior Design



**WALLS/PAINT/COUNTERS/
CABINETS/BATHROOMS**

Chair Rails for Corridor

Pawling Systems (Or Equal)

Profile Model : CRW-60

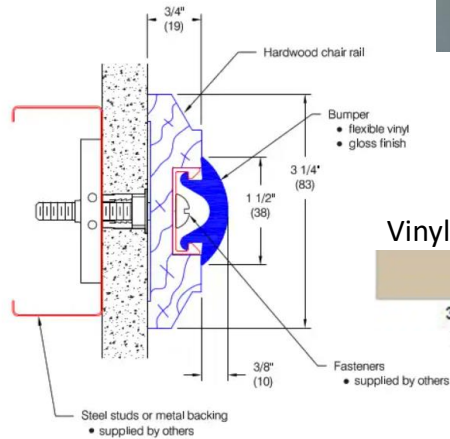
Wood Type: Oak or Maple

Stain Color: _____

Rubber Bumper: #3 Tan

End Caps: Qty _____

***Provide Drawings with locations indicated on the floor plan.



Wood Stain Colors	Light	Medium	Dark
	Maple with #132 Clear Finish	Maple with #476 Light Cherry	Maple with #474 Dark Cherry
	Oak with #132 Clear Finish	Oak with #476 Light Cherry	Oak with #474 Dark Cherry



Bumper Rails for Back of House

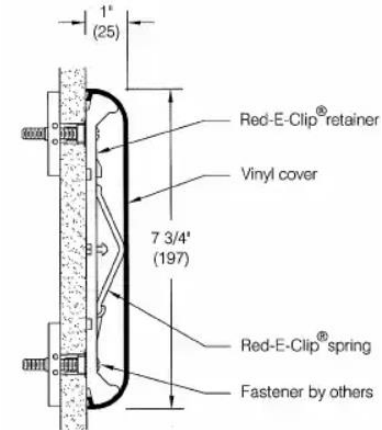
Pawling Systems (Or Equal)

Profile Model : WG-8 – 7.75" H

Color: #3 Tan

Dimensions: 1" D x 7.75" H x 144" L

***Provide Drawings with locations indicated on the floor plan.



Vinyl Color #3 Tan



Corner Guards

Pawling Systems (Or Equal)

Profile Model : GC-20 – 90° 2" Wing

Color: #21 Cappuccino

Dimensions: Must determine 4' or 8' length.

***Provide Drawings with locations indicated on the floor plan.



Vinyl Color
#21 Cappuccino



Guestroom Paint – Typical Wall:

- To match Sherwin Williams 6120 Believable Buff; Eggshell finish



Guestroom Paint – Trim:

- To match Sherwin Williams 6119 Antique White; Semi gloss finish



Guestroom Paint – Ceilings:

- To match Sherwin Williams 7005 Pure White; Flat finish



Corridor Paint – Above Chair Rail:

- To match Sherwin Williams 6120 Believable Buff; Eggshell finish



Corridor Paint – Below Chair Rail:

- To match Sherwin Williams 6122 Camelback; Semi gloss finish



Cabinetry Refurbish:

Thermofoil Doors/Painted Cabinets

White

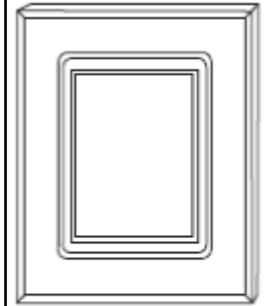
Thermofoil:

0114 Crystal/Glacier White

Finger Pull:

-Standard placement of fingerpulls on a door: Top and Bottom.

-Standard placement of fingerpulls on a drawer front: SPECIFY – bottom.



SQUARE RAISED PANEL

Cabinet Paint:

Sherwin Williams 7004 Snowbound

Countertop Options

- Counter edge detail is a Half Round Edge (also known as a Waterfall Edge)



-100% Acrylic Solid Surface to match Corian colors of Sahara or Savannah (or equal)

-Sinks will be 100% Acrylic Solid Surface to match Corian color Bisque (or equal)

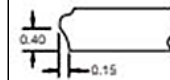


Corian - Sahara

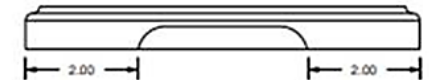


Corian - Savannah

Fingerpull



SIDE VIEW




EDGE VIEW



Porcelain Floor and Wall Tile
Dal Tile – Florentine; Color: Marfil FL07;
Size: 12" x 12"; Matte Finish

Other Uses:
Backsplash, Bathroom, Floor, Kitchen, Shower, Wall



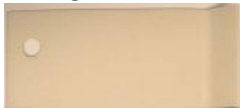
EPOXY GROUT – Custom Tile Installation System: CEG-Lite
Commercial 100% Solids Epoxy Grout;
Color: 186 Khaki 
GROUT JOINT SIZE: 3/16"

When walls ARE being painted use:

TILE BASE: DalTile – Florentine; Marfil P-43C9F
3" x 12"; Matte Finish
Porcelain Floor Bullnose Wall Tile

When walls are NOT being painted use:

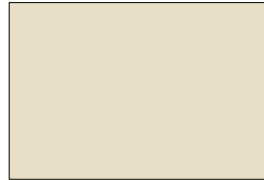
Rubber Base Solid:
Roppe 184 Almond or Johnsonite 129 Silk
Height to be 4.5" or 6" as specified on the Site Specific
depending on site situations



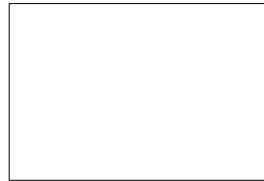
Paint STANDARDS



Laundry Room Paint – Typical Wall:
- To match Sherwin Williams 6120
Believable Buff
- Eggshell finish




Laundry Room Paint – Trim:
- To match Sherwin Williams 6119 Antique
White
- Semi gloss finish



Laundry Room Paint – Ceilings:
- To match Sherwin Williams 7005 Pure
White
- Flat finish

Countertop Options

- Counter edge detail is a Half Round Edge (also known as a Waterfall Edge) 

-100% Acrylic Solid Surface to match Corian Sahara or Savannah (or equal)

-Sinks will be 100% Acrylic Solid Surface to match Corian color Bisque (or equal)



Corian - Sahara



Corian - Savannah

AF Lodging Standards

BATH FITTER®

Confirm with base preferred faucet brand



DELTA CANADIAN CLASSIC 1300 SERIES (CHROME)

MOEN CHATEAU POSITEMP (CHROME)

Custom Tub/Shower Trim
Model: CD1689670215TRM
Finish: Chrome



ADA Showers

MOEN ADJUSTABLE 4-FUNCTION HAND-HELD SHOWER (CHROME)

Custom Slide/Grab Bar, 36"
Model: CD1689H353615
Finish: Chrome

ADA Showers



OXFORD - SINGLE CORNER SHELF



ARCO CURVED SHOWER ROD



ARISTOCRAT



Pattern: Savona

Interior Design



FIXED LIGHTING

BATHROOM OPTION 1:



Arkansas Model #W3425A-P051-G019-LS03-CD15-M (3425VPC)

Two Light Vanity Fixture, 18.25"W, 9.5"H. White Swirl Glass Diffusers, Direct Wired. Recommend two 800 lumen LED bulbs.

Finish: Metallic Silver Powder Coat



Arkansas Model #W3420A-P051-G019-LS14-CD05-M (3420VPC)

Three Light Vanity Fixture, 24"W, 9.5"H. White Swirl Glass Diffusers. Recommend three 800 lumen LED bulbs, Direct Wired.

Finish: Metallic Silver Powder Coat



Arkansas Model #W3421A-P051-G019-LS14-CD05-M (3421VPC)

Four Light Vanity Fixture, 32.75"W, 9.5"H. White Swirl Glass Diffusers. Recommend four 800 lumen LED bulbs, Direct Wired..

Finish: Metallic Silver Powder Coat

BATHROOM OPTION 2:



Arkansas Model #W3583A-L001-G019-LS03-CD05-M (3583C)

18" **Brushed Nickel** Vanity Fixture, with White Swirl Glass Diffusers, direct wired. Recommend two 5-watt LED bulbs.



Arkansas Model #W3584A-L001-G019-LS14-CD05-M (3584C)

24" **Brushed Nickel** Vanity Fixture, with White Swirl Glass Diffusers, direct wired. Recommend three 5-watt LED bulbs.

CEILING MOUNT OPTIONS:



Arkansas Model #3624CPL

14" **Brushed Nickel** Ceiling Fixture, two E26 sockets, direct wired, heavy duty frosted white acrylic diffuser, recommend two 800 lumen bulbs with E26 base. **Note that LED bulbs are required for sales to bases without 110/120-volt electricity.**

Finish: Brushed Nickel



Arkansas Model #C3514A-L001-G017-LS04-CD05-M (3514CPL)

15.75" **Brushed Nickel** Ceiling Fixture, with Frosted White Glass Diffuser. Recommend two 1100 lumen LED bulbs with GU24 base. **Note that LED bulbs are required for sales to bases without 110/120-volt electricity.**

Finish: Brushed Nickel

BATHROOM OPTION 3:



Arkansas Model #W3541B-P051-A005-LS09-CD05-M (3541VPC)

25.25" LED ready vanity fixture, Metallic Silver Powder Coated end caps, White Swirl Acrylic Diffuser, Direct Wired, Recommend one 7-watt T8 LED linear non-shunted bulb.

Finish: Metallic Silver



Arkansas Model #W3537B-P051-A005-LS09-CD05-M (3537VPC)

37.25" LED ready Vanity Fixture, Metallic Silver Powder Coated end caps, White Swirl Acrylic Diffuser, Direct wired, Recommend one 12-watt T8 LED linear Non-shunted bulb.

Finish: Metallic Silver



Arkansas Model #W3538B-P051-A005-LS09-CD05-M (3538VCP)

49.25" LED ready Vanity Fixture, Metallic Silver Powder Coated end caps, White Swirl Acrylic Diffuser, Direct wired, Recommend one 15-watt T8 LED linear Non-shunted bulb.

Finish: Metallic Silver

OPTIONAL COORDIOR WALL SCONCES:



Arkansas Model #3625C-LED-0850-SN

14" Brushed Nickel LED Wall Sconce, 850 lumen Cree LED module and driver, direct wired, heavy duty Frosted White Acrylic diffuser, Made in USA. Also available with 1250 lumen module. 5-year warranty.



Arkansas Model #W3626CPL

12" LED Brushed Nickle Wall Sconce, E26 socket, direct wired, Frosted White Acrylic diffuser, recommend 110 lumen LED bulb with E26 base. 5-year warranty on lighting components.

Finish: Metallic Silver

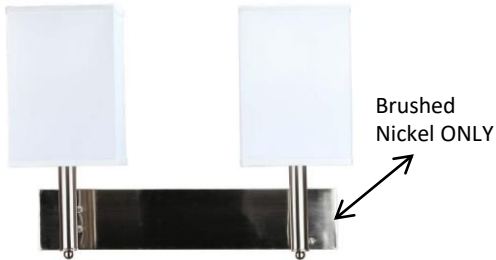


OPTIONAL ROOM WALL SCONCES:



Arkansas Model #W6195B-L001-LS03-SW03-CD03-M (6195S)

18"H Single Brushed Nickel Wall Lamp, medium socket base, on/off push button switch at backplate, 8' Silver 45° cord with polarized plug, 24" matching cord cover. Includes (5.5x7.5) x (5.5x7.5) x 11 Cream Linen Hardback Shade. Recommend 1100 lumen LED bulb.



Arkansas Model #W6195A-L001-LS01-SW01-CD03-M (6195D)

18"H Double Brushed Nickel Wall Lamp, two medium base sockets, two on/off push button switches at backplate, 8' Silver 45° cord with polarized plug, 24" matching cord cover. Includes 2- (5.5x7.5) x (5.5x7.5) x 11 Cream Linen Hardback Shades.. Recommend two 1100 lumen LED bulbs.

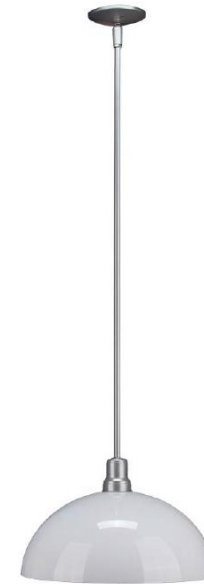
DINING TABLE LIGHT:

Arkansas Model #P3892A-A003-P051-LS01-CD05-M (3892P)

Metallic Silver Single Light Pendant with adjustable length rod kit (w/(2) 12" rods and (1)6" rod to accommodate 28"-39.5" drops), direct wired, with White Acrylic Diffuser, Canopy and Swivel. Recommend one 1100 lumen LED bulb.

Shade Dimensions:
16" W.

Finish: Metallic Silver



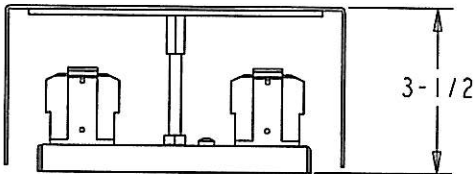
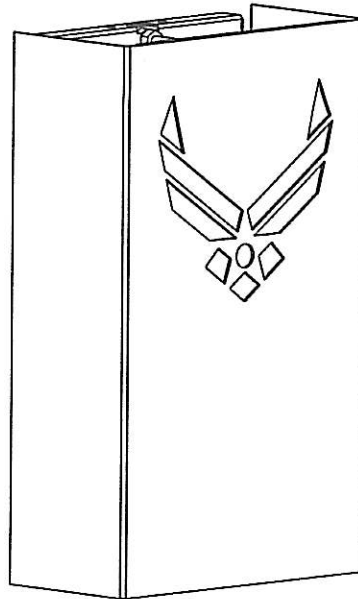
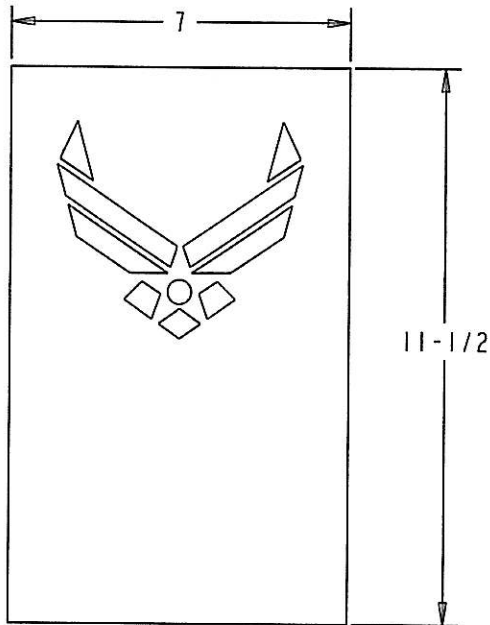
If you have a ceiling higher than 9'0" this fixture WILL NOT work, you need to contact Arkansas Lighting to request additional wiring and down rods.

Finish:



Metallic Silver ONLY

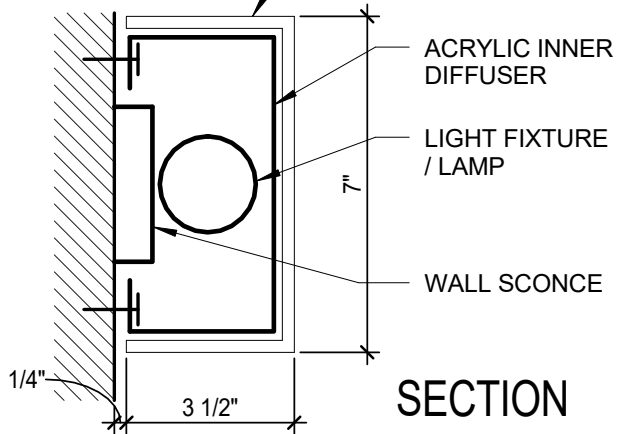
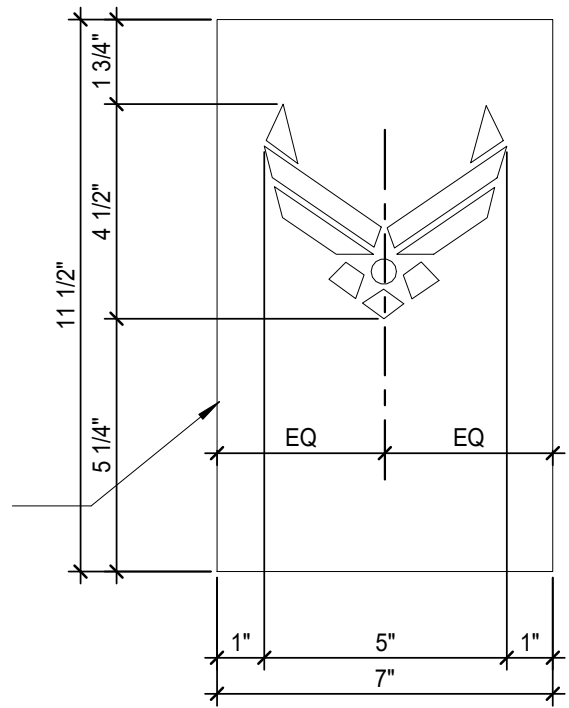
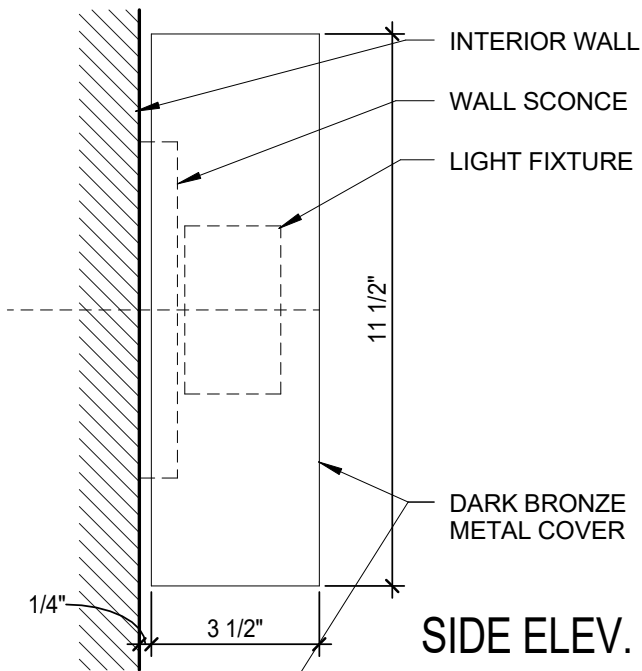
REV	ECO	DESCRIPTION	DATE	BY
-----	-----	-------------	------	----



SPECIFICATIONS:

- 1) FIXTURE MANUFACTURED OF CODE GAUGE MATERIAL
- 2) DECORATIVE FASCIA FINISH TO BE SPECIFIED.
- 3) LAMP TYPE (2) 26W QUAD CF GX24Q-3 BASE.
- 4) LAMPS FURNISHED AND INSTALLED BY OTHERS.
- 5) FIXTURE BEARS ETL DRY FLUORESCENT FIXTURE LABEL.
- 6) LENS .125" ACRYLIC, COLOR TO BE SPECIFIED.
- 7) UL/CSA LISTED INTEGRAL ELECTRONIC BALLAST, 0°F STARTING TEMPERATURE, 120-277VOLT COMPATIBLE 60HZ

DESIGNED BY D. YAEGER	DATE 06/23/03	INDESSA LIGHTING		
<small>NOT FOR REPRODUCTION This document contains proprietary information that is property of INDESSA LIGHTING. This document must be returned promptly if no longer needed or upon written request from INDESSA LIGHTING.</small>		TITLE 455 WITH CUSTOM LOGO		
		DRAWING # 10005logo	SHEET SIZE B	REV A
		PROJECT #	SHEET 1 OF 1	SCALE 0.4:1.0



NOTE: REFER TO E1/A-512 FOR "J" BOX DETAIL (SIM.)



LIGHT SCENCE @ CORRIDORS

SCALE: 3" = 1'-0"