

LITTLE ROCK A.F.B.
ARKANSAS

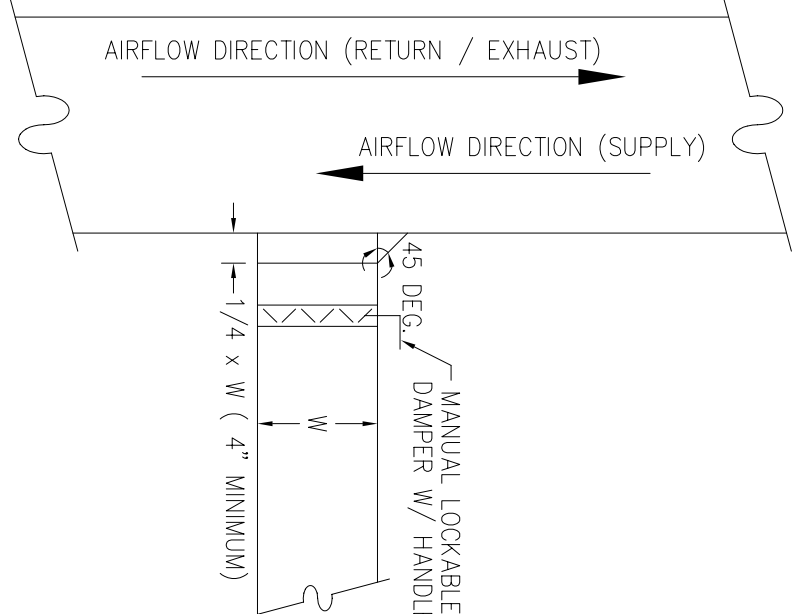
OWN ENGINEER	CHIEF ENGINEER
CHIEF OF OPERATIONS	BIO ENVIRONMENTAL ENG.
FIRE CHIEF	SAFETY
PROGRAM MANAGER	USMC AGENCY

APP'D	BY	Date	Revision/Issue	No.
			No Changes from Design to As-Built	1

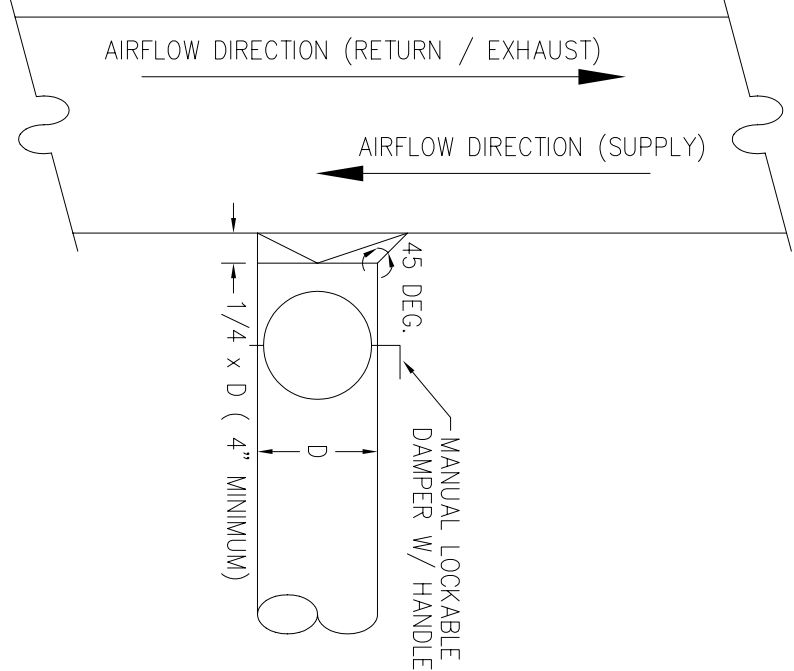
TEMPORARY LODGING
FACILITY

SHEET TITLE
HVAC DETAILS
AS-BUILT

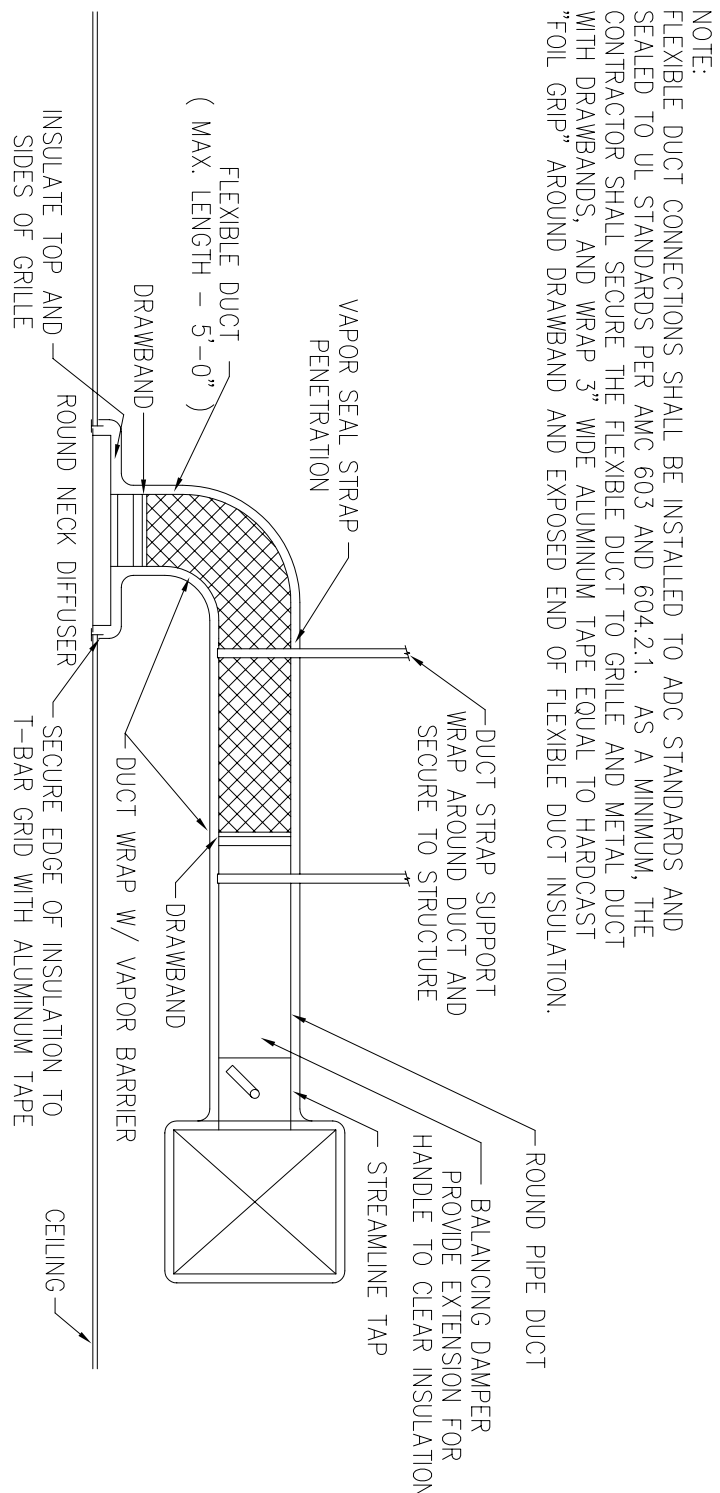
DRAWN BY WMI	LEAD DESIGNER WEL
TECH REVIEWER	FILE LOCATION
DESIGNED BY TNS	PROJECT NUMBER NKA002-5001
DATE 28 MAY 2002	SHEET M14
SCALE AS NOTED	81 of 108



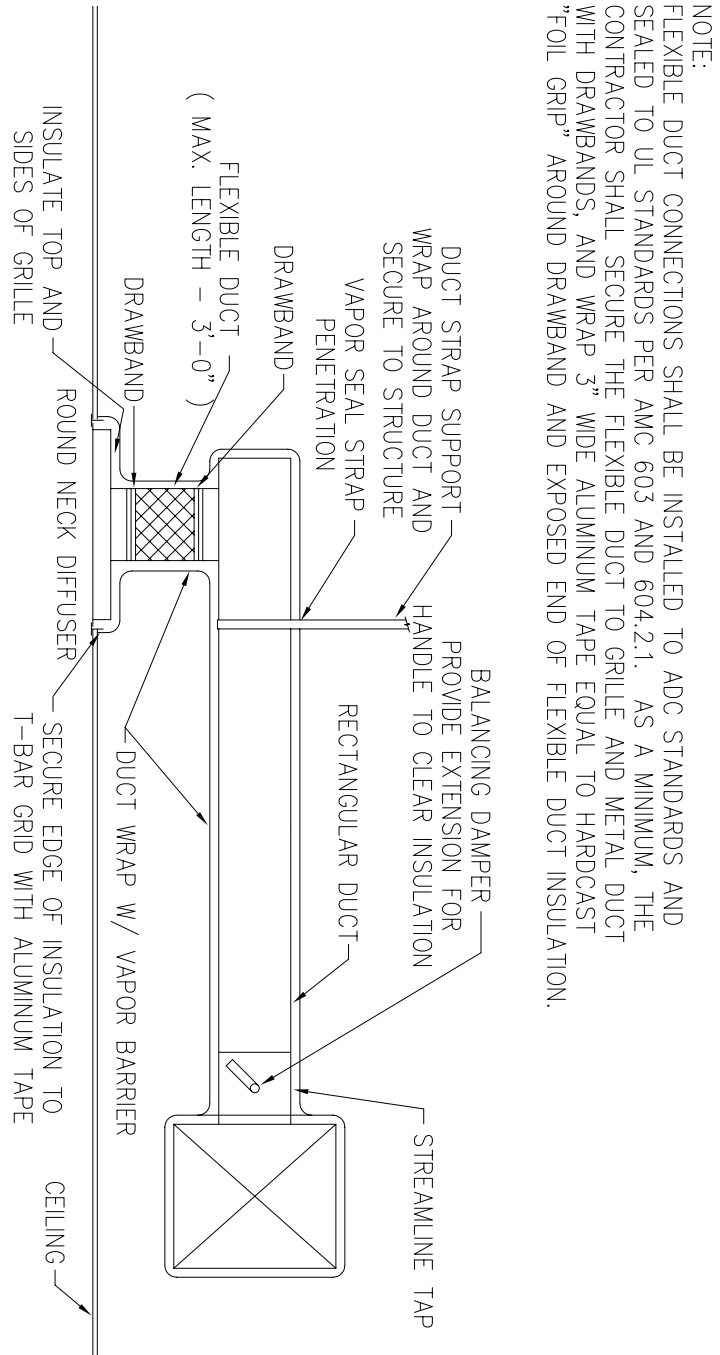
④ RECTANGULAR BRANCH DUCT CONNECTION
NOT TO SCALE



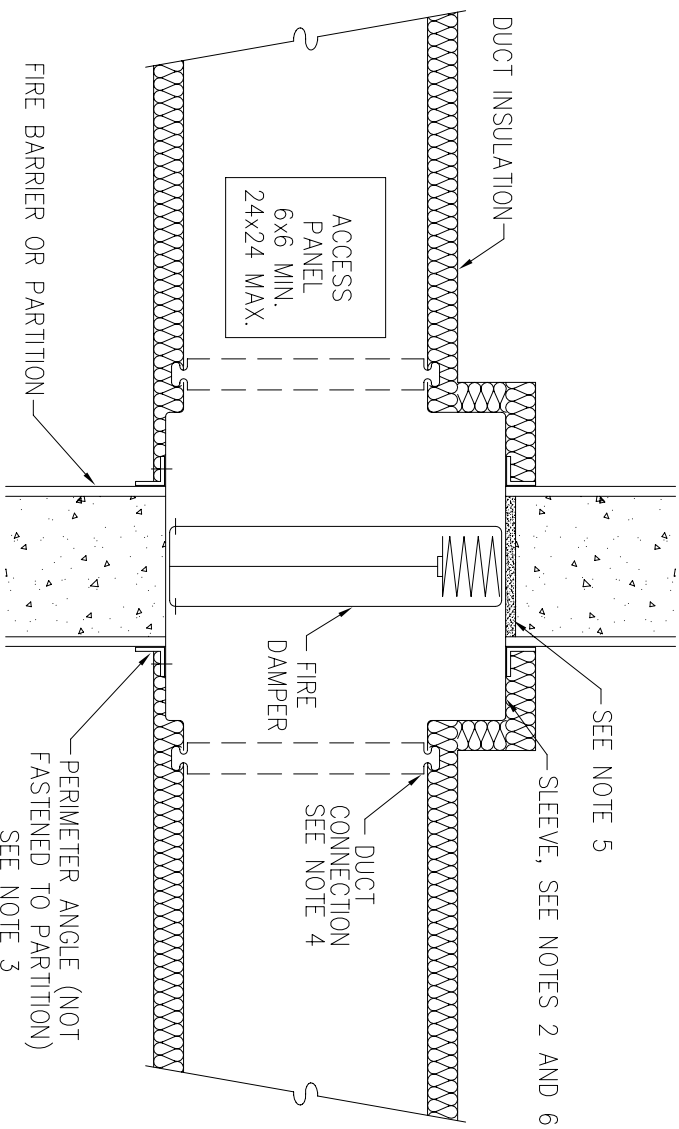
③ ROUND BRANCH DUCT CONNECTION
NOT TO SCALE



② DIFFUSER CONNECTION TO ROUND DUCT
NOT TO SCALE

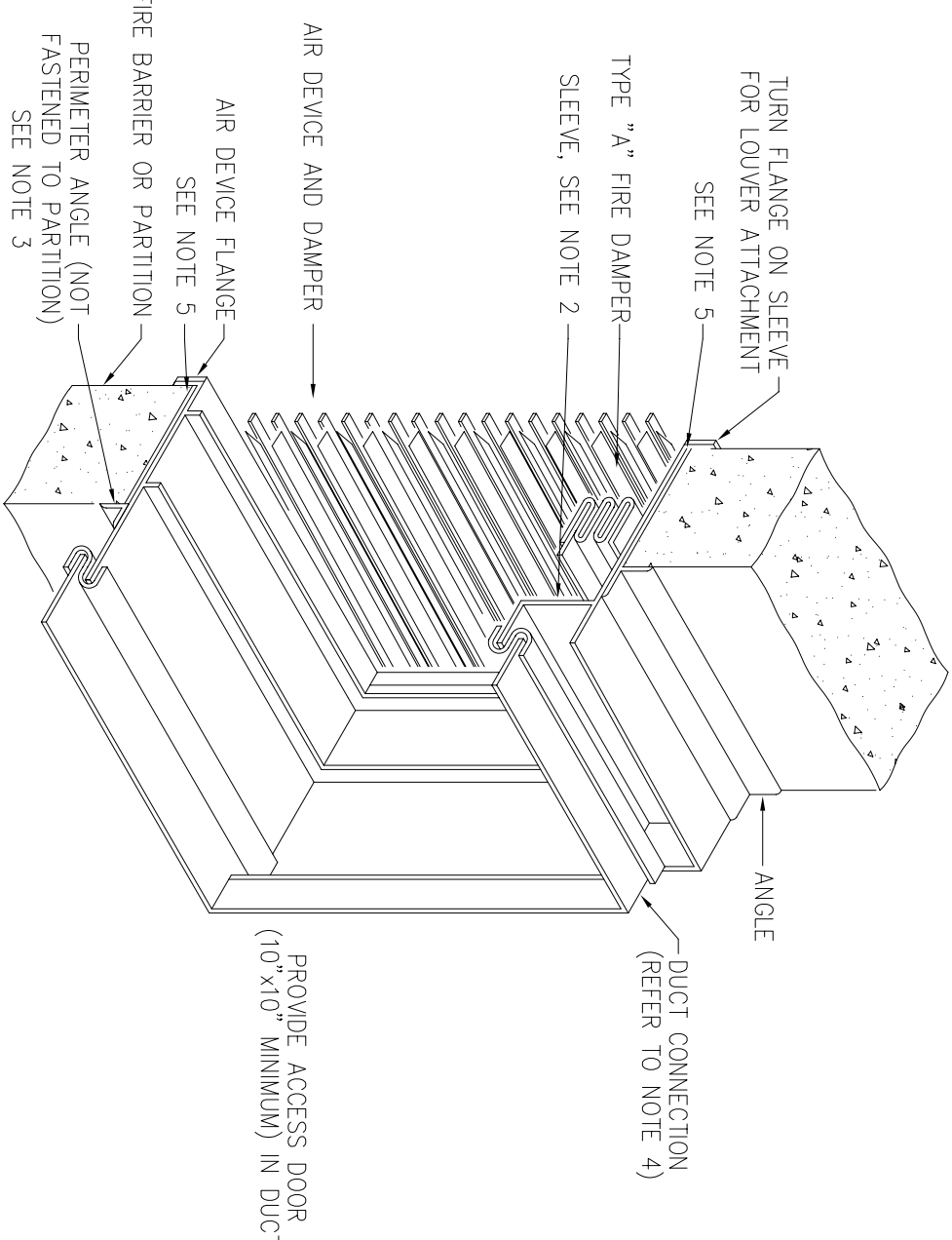


① DIFFUSER CONNECTION TO RECTANGULAR DUCT
NOT TO SCALE

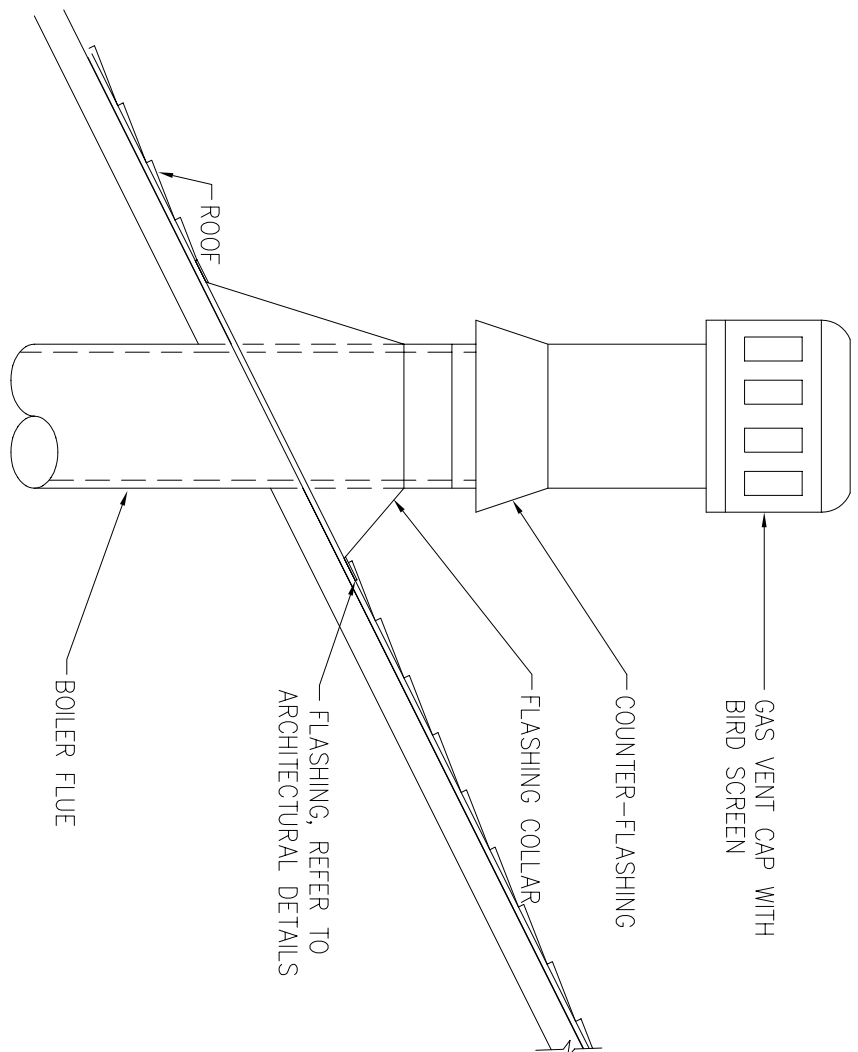


- NOTES:
1. COMPLY W/ SMACNA "FIRE, SMOKE AND RADIATION DAMPER INSTALLATION GUIDE FOR HVAC SYSTEMS" AND NFPA 90A "INSTALLATION OF AIR CONDITIONING AND VENTILATING SYSTEMS".
 2. GALVANIZED STEEL PERIMETER ANGLE SHALL NOT BE LESS THAN 1-1/2x1-1/2x1/4 GAGE WITH 1" MINIMUM OVERLAP ON ALL SIDES.
 3. GALVANIZED STEEL PERIMETER ANGLE SHALL NOT BE LESS THAN 1-1/2x1-1/2x1/4 GAGE WITH 1" MINIMUM OVERLAP ON ALL SIDES.
 4. BREAKAWAY DUCT CONNECTION, REFER TO SMACNA FIGURE 2-2 "UL ACCEPTED DUCT-SLEEVE CONNECTIONS" OF FIRE, SMOKE AND RADIATION DAMPER INSTALLATION GUIDE. UL TESTED DUCT SEALANT MAY BE USED.
 5. PROVIDE 1/4" TO 1/2" CLEARANCE ON HEIGHT AND WIDTH. FILL OPEN SPACE WITH FIRE STOPPING MATERIAL.
 6. FIRE DAMPER SLEEVE TO EXTEND 6" MINIMUM ON EACH SIDE.

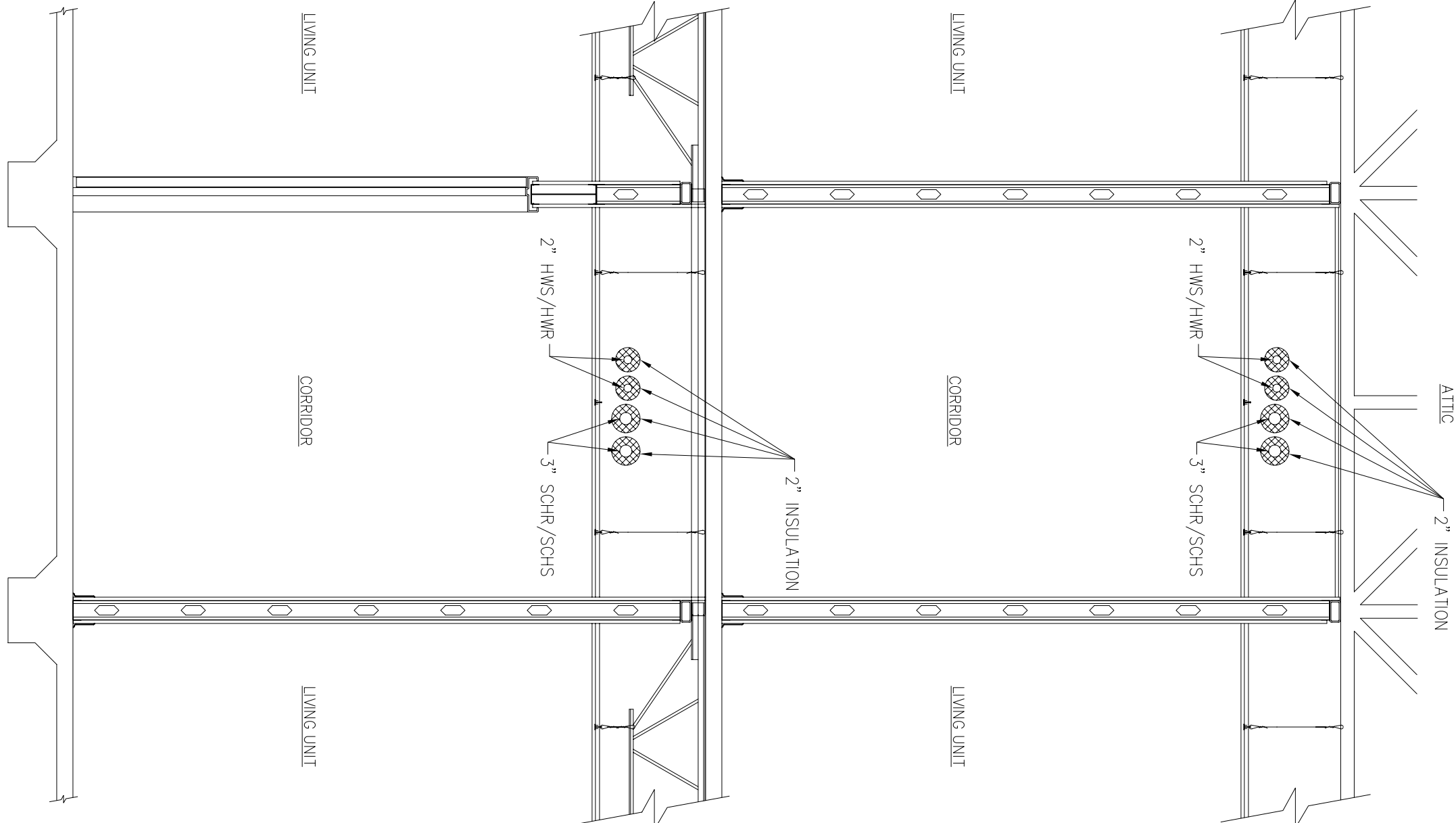
⑦ VERTICAL FIRE DAMPER DETAIL
NOT TO SCALE



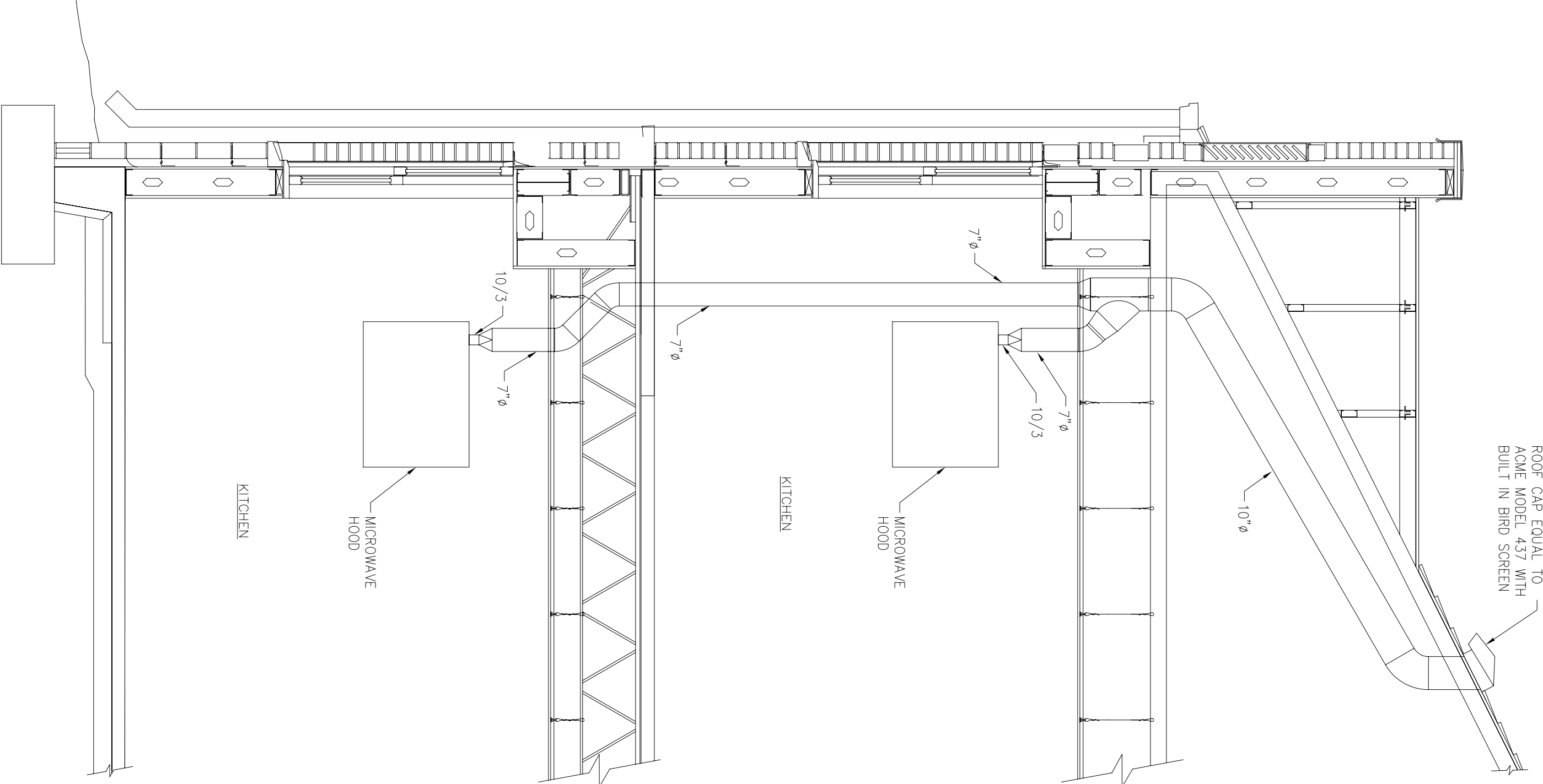
⑧ FIRE DAMPER AT GRILLE
NOT TO SCALE



⑨ BOILER STACK DETAIL
NOT TO SCALE



⑥ SECTION THRU TYPICAL CORRIDOR
3/8"-1'-0"



⑤ VENT HOOD EXHAUST SECTION
3/8"-1'-0"