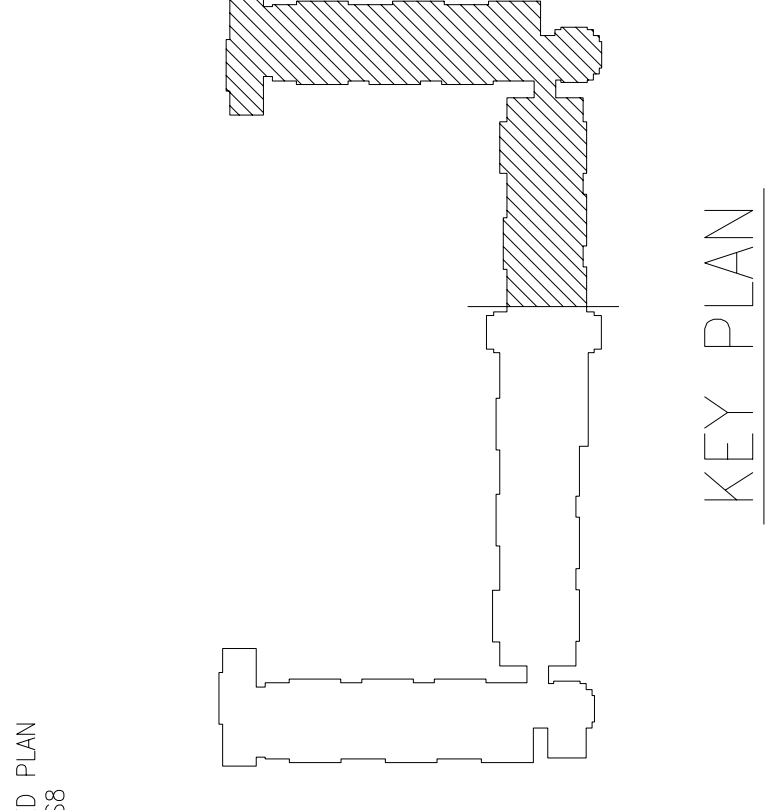
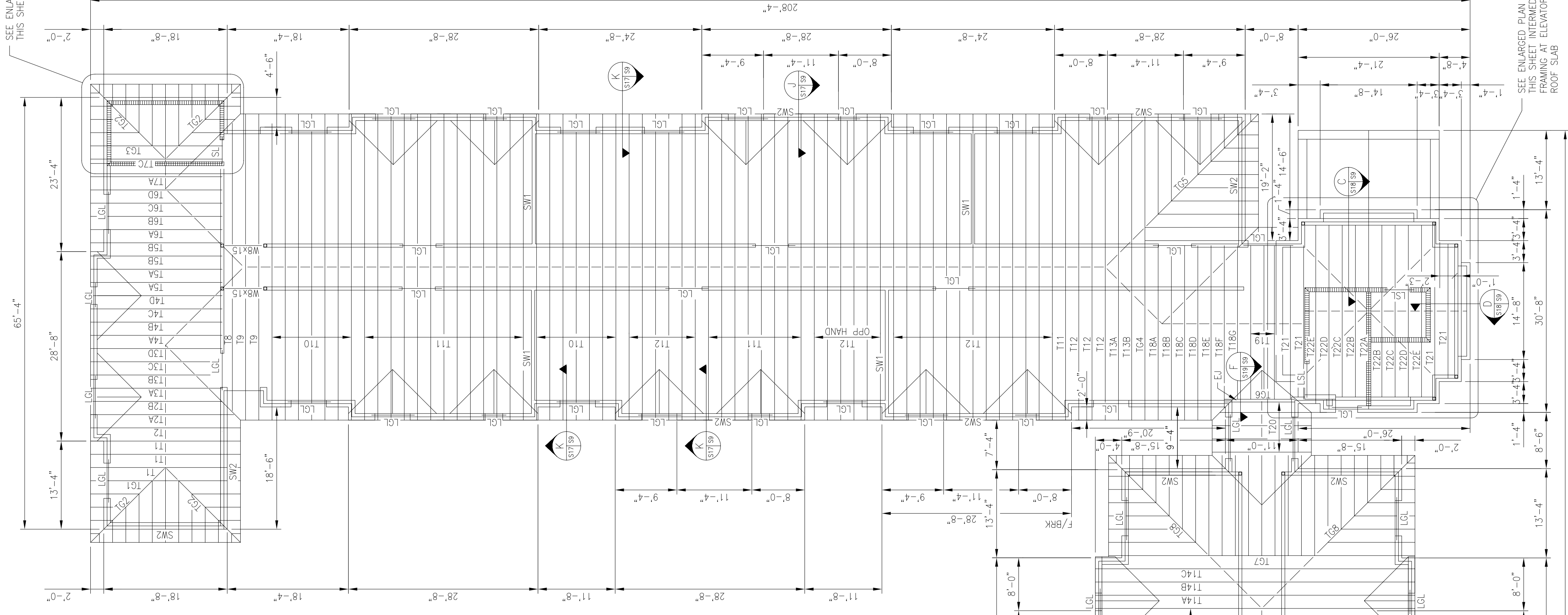


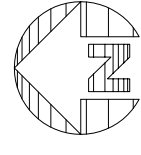
LITTLE ROCK A.F.B.
ARKANSAS



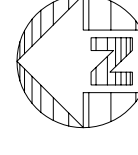
KEY PLAN



PARTIAL INTERMEDIATE FRAMING PLAN
3/16"=1'-0"



PARTIAL ROOF FRAMING PLAN
3/32"=1'-0"



- NOTES:
1. TRUSS BEARING +19'-4"
 2. REFER TO "DESIGN DATA" PARAGRAPH 4
 3. SHEET S1 FOR ROOF LOWS, BRACING TYPE AND ATTACHMENT REQUIREMENTS. SEE 4/521 FOR TYPICAL ROOF SHEATHING DETAIL.
 4. ALL RAFTERS AND TRUSSES SHALL HAVE METAL TIES OR CLIPS TO RESIST WIND UPLIFT. SEE 4/521 FOR TYPICAL ROOF TRUSS SHIP DRAWINGS.
 5. SW1 INDICATES INTERIOR X-BRACED STUD SHEAR WALL. SEE DETAIL 2/515.
 6. SW2 INDICATES EXTERIOR X-BRACED STUD SHEAR WALL. SEE DETAIL 3/515.
 7. TRIPLE STUDS UNDER ALL TRUSS ORDERS FROM FIRST FLOOR TO SECOND FLOOR. ALL TRUSSES MARKED "IG" ARE TRUSS ORDERS. ALL JACK TRUSSES NOT SHOWN FOR CLARITY.

No.	Revision/Issue	Date	BY	APP'D
1	No Changes from Design to As-Built			

PROJECT TITLE
TEMPORARY LODGING FACILITY

SHEET TITLE
PARTIAL ROOF FRAMING PLAN AS-BUILT

LEAD DESIGNER TYR	FILE LOCATION
TECH REVIEWER	PROJECT NUMBER NKAK02-5001
DESIGNED BY TYR	SHEET S9
DATE 28 MAY 2002	SCALE 3/32"=1'-0"
49 or 108	