

LITTLE ROCK A.F.B.  
ARKANSAS

**TOILET ACCESSORY SCHEDULE**

- 1 FRAMED MIRROR, 18" x 36" MOUNT 40" A.F.F. TO BOTTOM OF MIRROR
- 2 WALL MOUNTED SOAP DISPENSER, MOUNT 48" A.F.F. TO PUSH BUTTON.
- 3 RECESSED MOUNTED PAPER TOWEL DISPENSER/RECEPTACLE, MOUNT 48" TO PAPER TOWEL SLOT.
- 4 24" TOWEL BAR, MOUNT 48" A.F.F.
- 5 STAINLESS STEEL GRAB BARS, SEE DRAWINGS FOR LENGTHS & MOUNTING HEIGHTS. SEE TOILET ACCESSORY NOTES: 1, 2, & 4
- 6 RECESSED SINGLE ROLL TOILET PAPER HOLDER, UNCONTROLLED DELIVERY, MOUNT 2'-0" A.F.F. TO CENTER LINE OF UNIT, MOUNT 3'-0" FROM WALL BEHIND TOILET TO FRONT OF UNIT.
- 7 ROBE HOOK, MOUNT AT 48" A.F.F.
- 8 NOT USED
- 9 TUB SEAT
- 10 SHOWER CURTAIN & ROD
- 11 MOP/BROOM HOLDER MOUNT 5'-0" A.F.F. TO CENTERLINE OF UNIT, PROVIDE ONE PER JANITOR'S CLOSET.
- 12 UNDER LAVATORY GUARD
- 13 RECESSED MOUNTED MEDICINE CABINET WITH MIRROR, MOUNT 74" A.F.F. TO TOP.

**EQUIPMENT SCHEDULE**

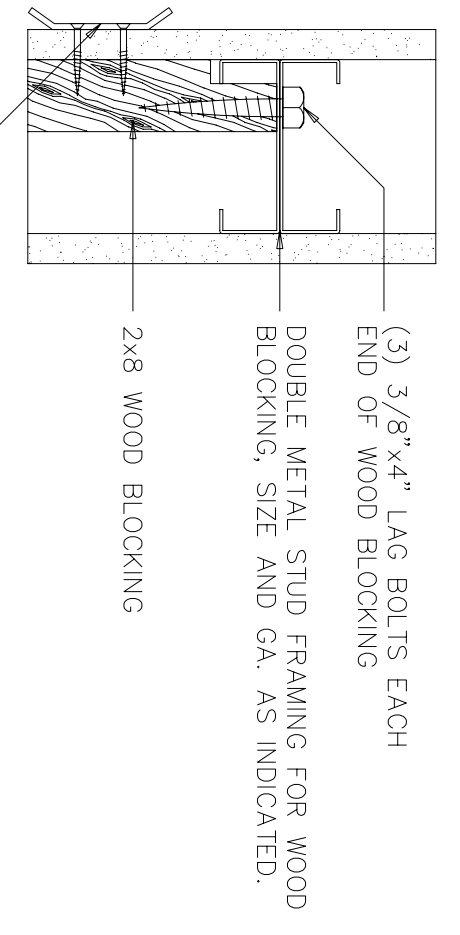
ITEM #	QUAN.	DESCRIPTION	REMARKS
1	48	RANGE - WHIRLPOOL MODEL RF73P9XGQ	
2	48	REFRIGERATOR - WHIRLPOOL MODEL ET14AKXJW	
3	48	DISHWASHER - WHIRLPOOL MODEL DU8500WQ	
4	48	MICROWAVE/ EXHAUST - WHIRLPOOL MODEL MH6130KEQ	
5	48	WASHER/ DRYER - WHIRLPOOL MODEL LTE 6234DO	
6	2	OVEN - FRIGIDAIRE GALLERY LINE MODEL FEB786CE-S	
7	2	COOKTOP - GE MODEL JP350TB	
8	3	REFRIGERATOR - WHIRLPOOL MODEL ED20KX7W	1
9	2	DISHWASHER - WHIRLPOOL MODEL D1716	2
10	2	MICROWAVE - GE MODEL WSH208XVW	
11	2	WASHER - GE MODEL DSKH45EWW	
12	2	DRYER - GE MODEL DSKH45EWW	
13	2	VENT HOOD - GE MODEL JVG35CQW	
14	50	CARBAGE DISPOSAL - KADLETTE MODEL KCD2500	

**EQUIPMENT SCHEDULE GENERAL NOTES:**

1. EQUIPMENT/ APPLIANCES WILL BE OWNER FURNISHED AND CONTRACTOR INSTALLED.
- EQUIPMENT SCHEDULE REMARKS**
- 1 SAME MODEL IN THE SERVICE AREA BREAKROOM.
  - 2 THERE IS NO APPROVED EQUAL.
  - 3 REAR CORNER DRAIN SINKS IN ADA UNITS TO ALLOW FOR KNEE SPACE

**TOILET ACCESSORY GENERAL NOTES**

- 1 GRAB BAR ANCHORS TO SUPPORT A CONCENTRATED LOAD OF 250 LB APPLIED AT ANY POINT & IN ANY DIRECTION, REFER TO ANSI A117.1 SECTION 4.24.3 & STATE BUILDING CODE. PROVIDE STAINLESS STEEL FINISHED SUPPORTS BRACKETS. RE: 3/4x27
- 2 GRAB BARS TO HAVE 1-1/2" OD & 1-1/2" CLEARANCE BETWEEN RAIL AND WALL.
- 3 AT ALL HANDICAPPED ACCESSIBLE TOILETS, WATER CLOSETS SHALL BE SET 1'-6" (18") OFF THE WALL, AND A MINIMUM OF 1'-6" FROM THE LAVATORY. THIS DIMENSION SHALL BE FROM THE CENTERLINE OF WATER CLOSET TO THE FINISH FACE OF THE WALL, AND THE EDGE OF THE LAVATORY.
- 4 ALL GRAB BARS SHALL BE 36" LONG AT THE BACK OF THE WATER CLOSET AND 42" LONG AT THE SIDE OF THE WATER CLOSET, UNLESS OTHERWISE SCHEDULED.
- 5 ALL HOT AND COLD WATER SUPPLY LINES, AND ALL DRAIN LINES AT H.C. LAVATORIES SHALL BE INSULATED AND PROTECTED WITH PREMANUFACTURED INSULATION ASSEMBLIES WHICH MEET ADA ACCESSIBLE CRITERIA, PROVIDE HAND BASIN - GUARD AS MANUFACTURED BY FRIBBERO OR EQUAL.



**3 GRAB BAR DETAIL**

SCALE: NOT TO SCALE  
RE: TOILET ACCESSORY GENERAL NOTE 1

**FINISH SCHEDULE**

KEY	ROOM NAMES	FLOOR	MATERIALS @	FINISHES @	REMARKS
1	BEDROOM & CLOSET	CPT	BASE: GBR WALLS: GBR CLG. HEIGHT: 7'-11"	WALLS: PT CLG.: PT	
2	LIVING ROOM & CLOSET	CPT	WD: GBR GB: GBR CLG. HEIGHT: 7'-11"	PT: PT PT: PT	
3	KITCHEN & LINEN	CT	WD: GBR GB: GBR CLG. HEIGHT: 7'-11"	PT: PT PT: PT	
4	BATH	CT	WD: GBR GB: GBR CLG. HEIGHT: 7'-11"	PT: PT PT: PT	
5	LOBBY & CORRIDOR	CPT	GB: AT CLG. HEIGHT: 7'-11"	PT: -	
6	LOBBY & CORRIDOR	CT	GB: AT CLG. HEIGHT: 7'-11"	PT: -	
7	CORRIDOR & TOILET	CPT	WD: GBR GB: GBR CLG. HEIGHT: 7'-11"	PT: PT PT: PT	
8	CORRIDOR & TOILET	RT	R: - CLG. HEIGHT: 9'-2-1/2"	PT: PT	
9	ELEVATOR	CPT	-	-	
10	BREAKROOM & OFFICE	CPT	WD: GBR GB: GBR CLG. HEIGHT: 7'-11"	PT: PT PT: PT	
11	HOUSEKEEPING & LINEN	CPT	WD: GBR GB: GBR CLG. HEIGHT: 7'-11"	PT: PT PT: PT	
12	JANITOR & STORAGE	SC	R: - CLG. HEIGHT: 7'-11"	PT: PT	
13	ELECT & MECH. AREAS	SC	R: - CLG. HEIGHT: 7'-11"	PT: -	
14	UNFINISHED SPACE	SC	-	TF: (3)	
15					

**FINISH SCHEDULE LEGEND**

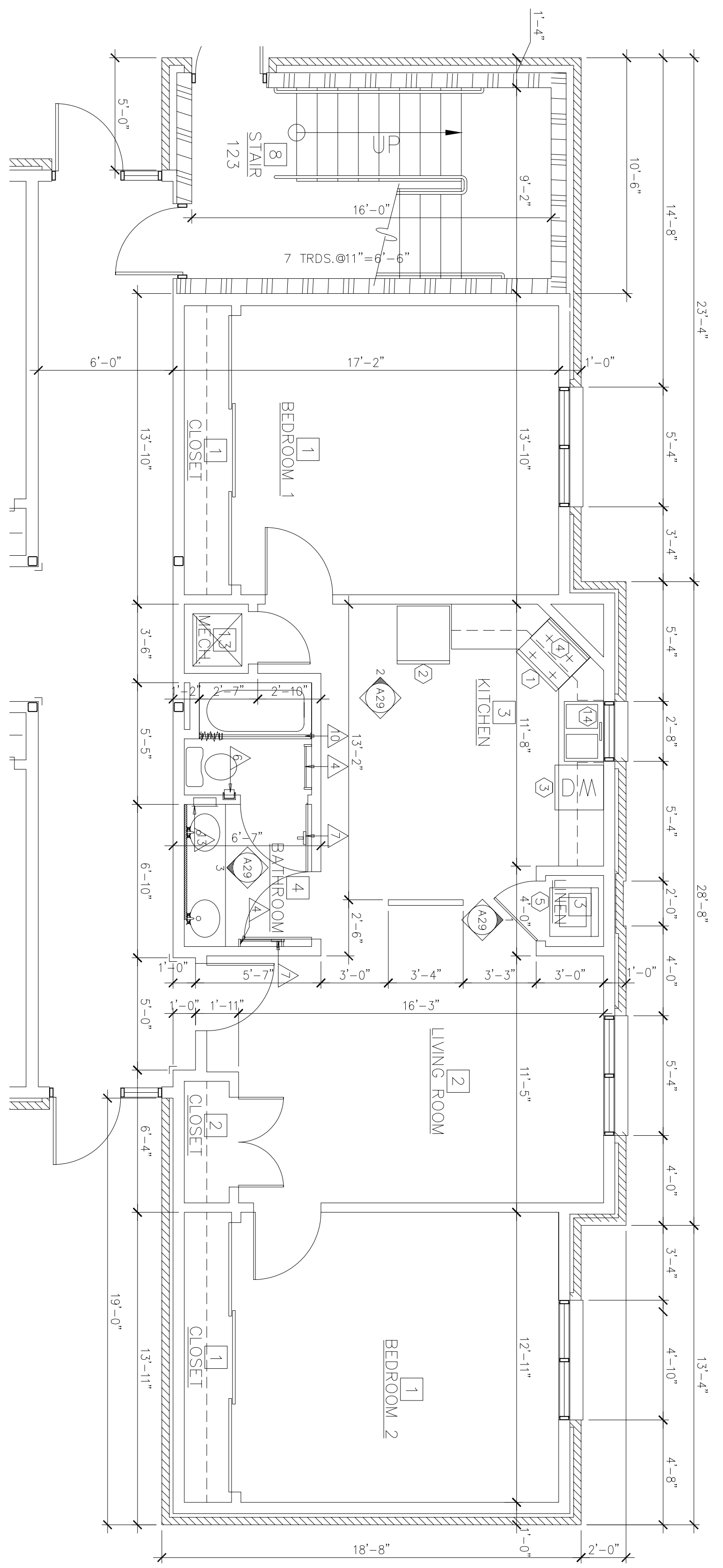
- FLOOR:**  
SC = SEALED CONCRETE  
CPT = CARPET  
RT = RUBBER TILE  
CT = CERAMIC TILE
- BASE:**  
RPT = RUBBER  
RPT = CARPET CONE  
WD = WOOD
- CEILING:**  
AC = ACOUSTICAL TILE  
PT = PAINT
- WALLS:**  
GB = GYP. BOARD  
PT = PAINT WALL COVER  
TMC = TILE MEDIUM ONLY  
ES = EXPOSED STUDS  
PWC = PROTECTIVE WALL COVERING

**FINISH SCHEDULE REMARKS**

- 1 SHERWIN WILLIAMS 1134 MASTERPRECE TAN FROM FLOOR TO 2'-10" A.F.F., 1136 WATER CHESTNUT FROM 2'-10" A.F.F. TO CLG. PROVIDE OS 1801 ONE SOURCE (3/16 x 5) WOOD CHAIR RAIL @ TRANSITION. PAINT CHAIR RAIL SHERWIN WILLIAMS 1136 WATER CHESTNUT. STAIRS SHALL HAVE RUBBER TREADS & RUBBER RISERS. PAINT EXPOSED STEEL STRINGER, HANDRAILS & ALL EXPOSED STEEL SURFACES.
- 2 TAPE & FLOAT GYPSUM BOARD JOINTS ONLY. CEILING IS UNFINISHED.
- 3 PROVIDE SOLID SURFACING TUB SURROUND FROM TOP OF TUB TO CEILING. PROVIDE 5/8" BACKER BOARD SUBSTRATE BEHIND ALL SOLID SURFACING TUB SURROUND. PROVIDE 1/2" GYPSUM BOARD OVER SUBSTRATE AT ALL VANITIES. PROVIDE SOLID SURFACE LAVATORY BOWLS AT ALL VANITIES.
- 4 DELETE CEILING IN ELEC. ROOMS AND COMM. ROOMS. ELEVATOR EQUIPMENT ROOMS SHALL HAVE 1 HOUR RATED CEILING.
- 5 ALL GYPSUM BOARD INDICATED TO BE PROVIDED AT WALLS, CEILING AT ALL BATHROOM TUB AND WATER CLOSET AREAS SHALL BE WATER RESISTANT GYPSUM BOARD. (WATER RESISTANT GYPSUM BOARD NOT REQUIRED IN VANITY AREA OF ALL BATHROOMS).

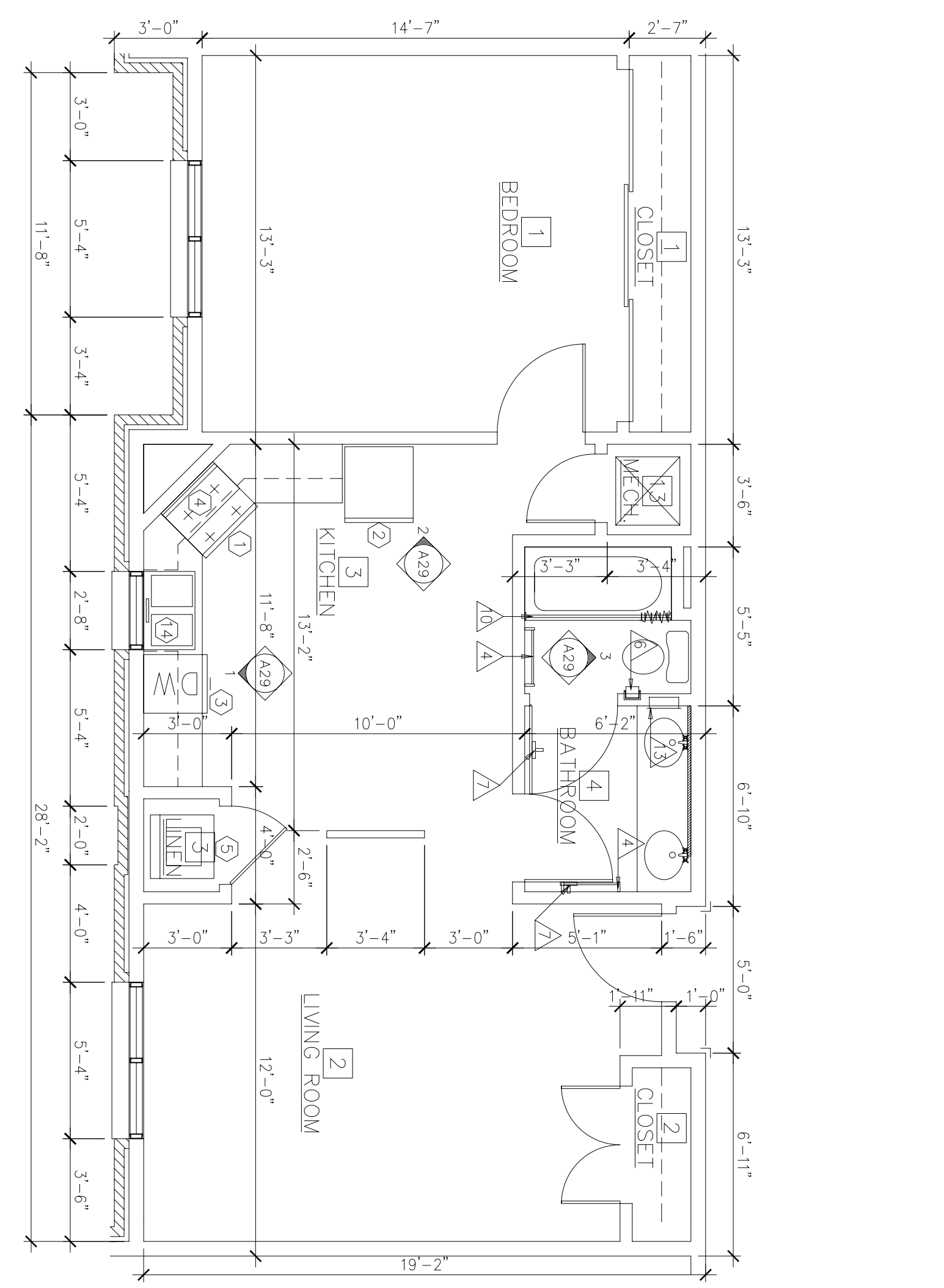
**COLOR SCHEME**

- 1 LIVING UNIT INTERIOR WALL PAINT FINISH  
MFG: SHERWIN WILLIAMS  
FINISH: SATIN  
COLOR: 1134 MASTERPRECE TAN
- 2 INTERIOR CEILING PAINT FINISH (CEILING SURFACES TO INCLUDED FURR DOWN, GRILLS, DIFFUSERS, REGISTERS, AND ACCESS PANELS)  
MFG: DEVOE & RAYMOND CO. / AMERTONE PAINT CORP.  
COLOR: 248P CLOVER SWEET
- 3 INTERIOR TRIM PAINT FINISHES (DOORS, FRAMES, AND CORRIDOR CHAIR RAIL)  
MFG: SHERWIN WILLIAMS  
FINISH: SEMI-GLOSS  
COLOR: 1136 WATER CHESTNUT
- 4 VINYL WALL COVERING (BD OPTION #5)  
MFG: JM LYNNE  
MATERIAL: LOMANI  
STATE NUMBER: SH-82-18  
COLOR: 248P CLOVER SWEET  
MATCH WILSON ART LAMINATE 10777-7  
PROVIDE COLOR SELECTION FOR APPROVAL
- 5 SOLID SURFACING  
A. KITCHEN & BATHROOM COUNTERTOPS, TUB SURROUNDINGS AND WINDOW SILLS  
MFG: WILSON ART INTERNATIONAL  
COLOR: D90-TM KAKI BROWN TEMPEST  
B. UNDERMOUNT BATHROOM LAVATORY BOWLS  
MFG: WILSON ART INTERNATIONAL  
MODEL: BV 121  
COLOR: 1572-SL ANTIQUE WHITE
- 6 WOOD CABINET STAIN  
MATCH WILSON ART LAMINATE 10777-7  
PROVIDE COLOR SELECTION FOR APPROVAL



**2 ENLARGED PLAN AT 2 BEDROOM UNIT**

SCALE: 1/4" = 1'-0"  
0" 1" 2" 4" 8" 12"



**1 ENLARGED PLAN AT 1 BEDROOM UNIT**

SCALE: 1/4" = 1'-0"  
0" 1" 2" 4" 8" 12"

NOTE:  
1. ALL DIMENSIONS SHOWN ARE FINISH  
2. EXTERIOR DIMENSIONS MAY VARY @  
LIVING UNITS REFER TO SHEETS A7 & A8

No.	Revision/Issue	Date	BY	APP'D
1	Ceiling heights lowered from 8'-0" to 7'-11"			

PROJECT TITLE  
**TEMPORARY LODGING FACILITY**

SHEET TITLE  
**ENLARGED PLANS AS-BUILT**

DRAWN BY JB	LEAD DESIGNER BG
TECH REVIEWER	FILE LOCATION
DESIGNED BY BG	PROJECT NUMBER NKAKO2-5001
DATE 28 MAY 2002	SHEET A27
SCALE 1/4" = 1'-0"	36 of 108