

LITTLE ROCK A.F.B.
ARKANSAS

No.	Revision/Issue	Date	BY	APP'D
1	Key Note 5 lower ceiling height changed from 8'-0" to 7'-11"			

PROJECT TITLE
TEMPORARY LODGING
FACILITY

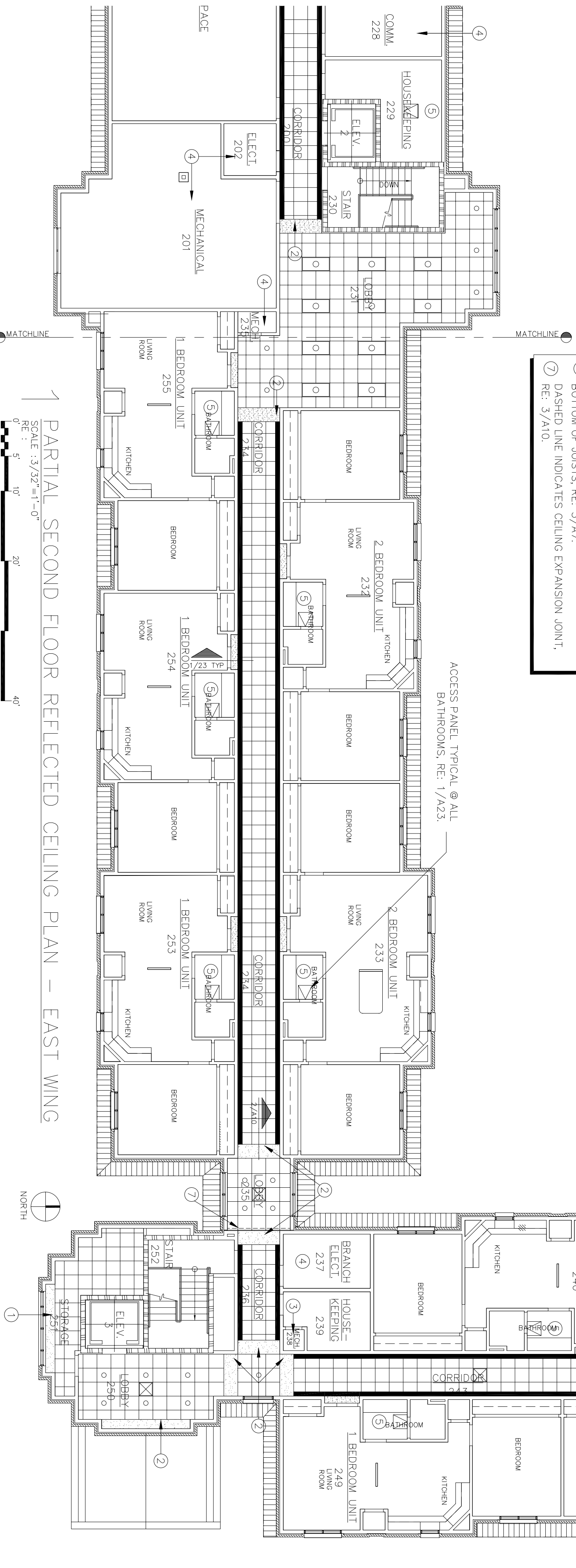
SHEET TITLE
PARTIAL SECOND FLOOR
REFLECTED CEILING PLAN
AS-BUILT

DRAWN BY JB/ RL	LEAD DESIGNER BG
TECH REVIEWER	FILE LOCATION
DESIGNED BY BG	PROJECT NUMBER NKA02-5001
DATE 28 MAY 2002	SHEET A13
SCALE 3/32"=1'-0"	22 OF 108

SYMBOL LEGEND	
	2x4 FLUORESCENT LIGHT
	CONTINUOUS RECESSED FLUORESCENT LIGHT ALONG BOTH SIDES OF CORRIDOR RE: 1/A23, 1/E2, 1/E3, 1/E5, & 1/E6
	RECESSED CAN LIGHT
	SUPPLY AIR DIFFUSER
	RETURN AIR DIFFUSER
	INTERIOR GYPSUM BOARD
	PRE-FINISHED ALUMINUM VENTED SOFFIT PANEL
	2'-0"x2'-0" SUSPENDED ACOUSTICAL TILE
	ACCESS PANEL 2'-0"x2'-0"

GENERAL NOTES
A. REFER TO MECHANICAL & ELECTRICAL PLANS FOR DIFFUSER & LIGHT LAYOUT IN GYPSUM BOARD CEILINGS.
B. ALL CEILING HEIGHTS SHALL BE 8'-0" ABOVE FINISHED FLOOR UNLESS OTHERWISE NOTED. SEE FINISH SCHEDULE A27.
C. ALL ROOMS NOT SHOWN TO HAVE ACOUSTICAL TILE CEILINGS SHALL HAVE GYPSUM BOARD CEILINGS, UNLESS NOTED OTHERWISE.
D. CONTRACTOR IS TO FIELD VERIFY AND COORDINATE THE EXACT LOCATION OF ALL SEAMLESS CEILING ACCESS PANELS TO PROVIDE ACCESS TO CHANGE THE ERU OR EF UNIT'S FILTER.
E. ALL SEAMLESS CEILING ACCESS PANELS SHALL BE PAINTED TO MATCH GYPSUM BOARD CEILING.

KEY NOTES
① GYPSUM BOARD FUR DOWN CEILING BOTTOM OF CEILING @ 7'-4" A.F.F.
② GYPSUM BOARD FUR DOWN CEILING BOTTOM OF CEILING @ 7'-6" A.F.F.
③ NO CEILING
④ ATTACH GYPSUM BOARD CEILING DIRECTLY TO RUSSSES IN THIS ROOM, SECOND FLOOR.
⑤ PROVIDE TWO CEILINGS IN ALL ROOMS ON THE 2nd FLOOR WHICH ARE SHOWN TO HAVE CEILING ACCESS PANELS. THE UPPER CEILING SHALL BE ATTACHED TO THE BOTTOM CHORD OF THE TRUSS. THE LOWER CEILING SHALL BE SUSPENDED @ 7'-11" A.F.F. THIS WILL CREATE A CAVITY FOR THE INSTALLATION OF MECHANICAL EQUIPMENT. RE: 1/A23.
⑥ HORIZONTAL SHAFT WALL CEILING APPLIED TO THE BOTTOM OF JOISTS. RE: 3/A7.
⑦ DASHED LINE INDICATES CEILING EXPANSION JOINT, RE: 3/A10.



1 PARTIAL SECOND FLOOR REFLECTED CEILING PLAN – EAST WING