

LITTLE ROCK A.F.B.
ARKANSAS

| No. | Revision/Issue | Date | BY | APP'D |
|-----|--|------|----|-------|
| 2 | Key Note 5 lower ceiling height changed from 8'-0" to 7'-11" | | | |
| 1 | Wall, Door and Ceiling Changes from Design | | | |

TEMPORARY LODGING
FACILITY

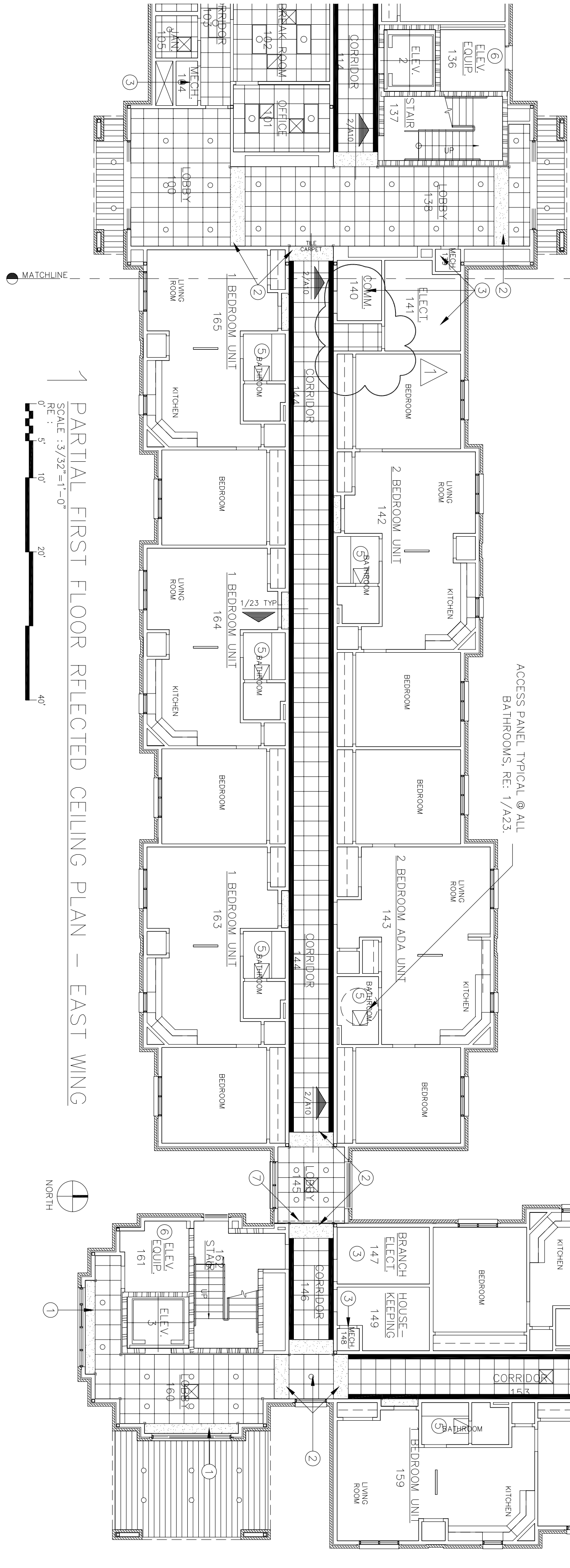
SHEET TITLE
PARTIAL
FIRST FLOOR
REFLECTED CEILING PLAN
AS-BUILT

| | |
|----------------------|-------------------------------|
| DRAWN BY JB / RL | LEAD DESIGNER BG |
| TECH REVIEWER | FILE LOCATION |
| DESIGNED BY BG | PROJECT NUMBER NKAHQ2-5001 |
| DATE 28 MAY 2002 | SHEET A11 |
| SCALE 3/32"=1'-0" | 20 OF 108 |

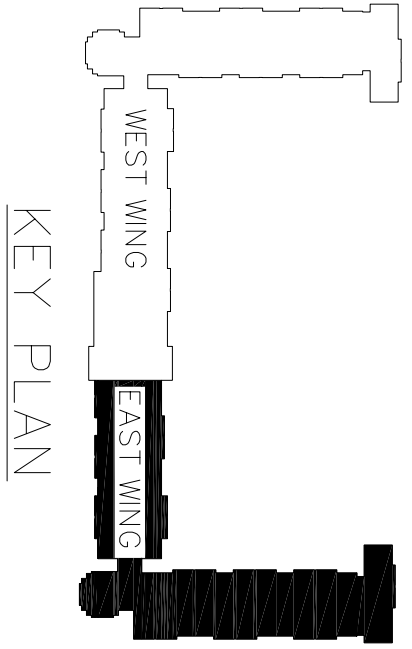
| SYMBOL LEGEND | |
|---------------|---|
| | 2x4 FLOURESCENT LIGHT |
| | 1x4 FLOURESCENT LIGHT |
| | CONTINUOUS RECESSED FLOURESCENT LIGHT |
| | RECESSED CAN LIGHT |
| | SUPPLY AIR DIFFUSER |
| | RETURN AIR DIFFUSER |
| | INTERIOR GYPSUM BOARD |
| | PRE-FINISHED ALUMINUM VENTED SOFFIT PANEL |
| | 2'-0"x2'-0" SUSPENDED ACOUSTICAL TILE |
| | ACCESS PANEL 2'-0"x2'-0" |

| GENERAL NOTES | |
|---------------|---|
| A. | REFER TO MECHANICAL & ELECTRICAL PLANS FOR DIFFUSER & LIGHT LAYOUT IN GYPSUM BOARD CEILINGS. |
| B. | ALL CEILING HEIGHTS SHALL BE 8'-0" ABOVE FINISHED FLOOR UNLESS OTHERWISE NOTED. SEE FINISH SCHEDULE A27. |
| C. | ALL ROOMS NOT SHOWN TO HAVE ACOUSTICAL TILE CEILINGS SHALL HAVE GYPSUM BOARD CEILINGS, UNLESS NOTED OTHERWISE. |
| D. | CONTRACTOR IS TO FIELD VERIFY AND COORDINATE THE EXCAT LOCATION OF ALL SEAMLESS CEILING ACCESS PANELS TO PROVIDE ACCESS TO CHANGE THE ERU OR EF UNITS FILTER. |
| E. | ALL SEAMLESS CEILING ACCESS PANELS SHALL BE PAINTED TO MATCH GYPSUM BOARD CEILING. |

| KEY NOTES | |
|-----------|---|
| 1 | GYPSUM BOARD FUR DOWN CEILING BOTTOM OF CEILING @ 7'-4" A.F.F. |
| 2 | GYPSUM BOARD FUR DOWN CEILING BOTTOM OF CEILING @ 7'-6" A.F.F. |
| 3 | NO CEILING |
| 4 | ATTACH GYPSUM BOARD CEILING DIRECTLY TO TRUSSES IN THIS ROOM, SECOND FLOOR. |
| 5 | PROVIDE TWO CEILINGS IN ALL ROOMS ON THE 2nd FLOOR WHICH ARE SHOWN TO HAVE CEILING ACCESS PANELS. THE UPPER CEILING SHALL BE ATTACHED TO THE BOTTOM CHORD OF THE TRUSS. THE LOWER CEILING SHALL BE SUPPORTED BY 2"x4" RFT. THIS WILL CREATE A CAVITY FOR THE INSTALLATION OF MECHANICAL EQUIPMENT, RE: 1/A23. |
| 6 | HORIZONTAL SHAFT WALL CEILING APPLIED TO THE BOTTOM OF JOISTS, RE: 3/A7. |
| 7 | DASHED LINE INDICATES CEILING EXPANSION JOINT, RE: 3/A10. |



PARTIAL FIRST FLOOR REFLECTED CEILING PLAN – EAST WING



KEY PLAN