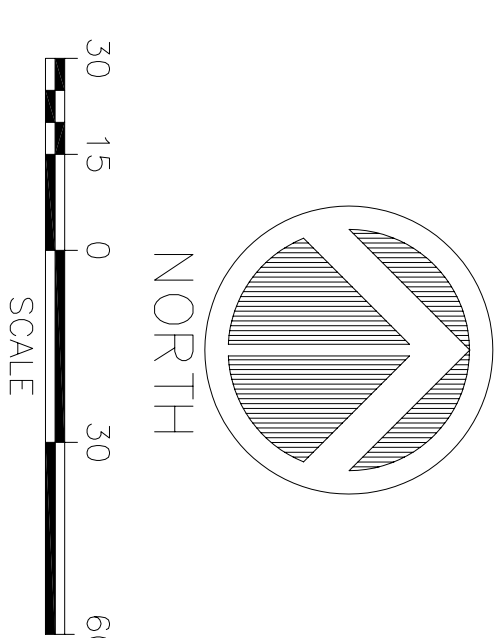


LITTLE ROCK A.F.B  
ARKANSAS



1	Added Gas Line as shown not originally shown on drawings			
No.	Revision/Issue	Date	BY	APP'D

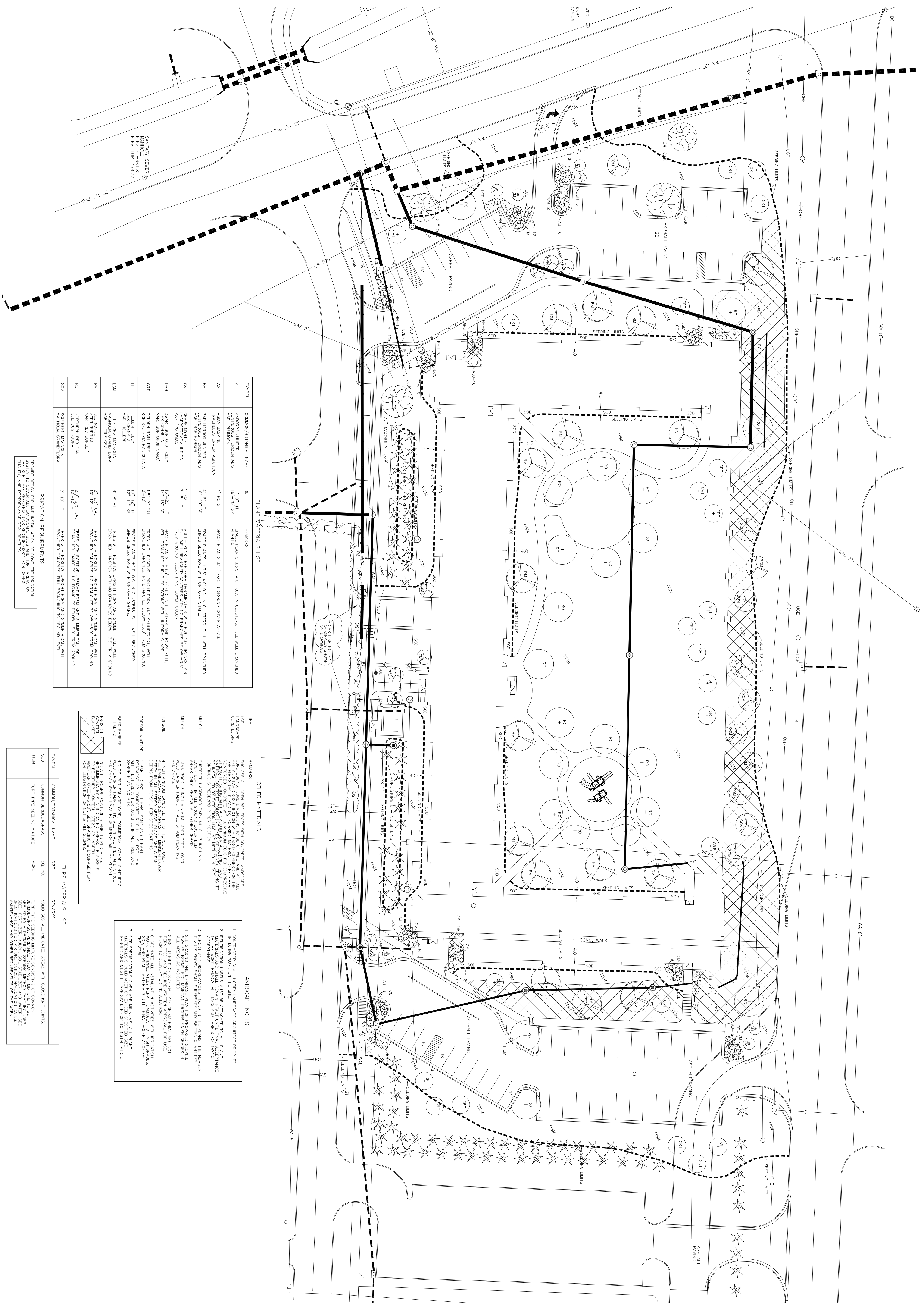
PROJECT III

TEMPORARY LODGING FACILITY (TLF)  
LITTLE ROCK AIR FORCE BASE

SHEET TITLE

LANDSCAPE PLAN  
AS-BUILT

DRINK BY	LEAD DESIGNER
RMB & JAV	KRY
TECH REVIEWER	FILE LOCATION
RMB	6-100-123.DESIGN.N01158.DWG
DESIGNED BY	PROJECT NUMBER
RMB	NK402-5001
DATE	SHEET
28 MAY 2002	L1
SCALE	
1"=30'	8 of 108

[illegible][illegible]

TIRE MATERIALS LIST	
STANDARD	REMARKS
COMMON GEOMETRICAL NAME	
SOD	SOD, SOD ALL INDICATED AREAS WITH CLOSE JOINT JOINTS.
TIS94	
TIRE TYPE SECONDARY MATERIAL	
ASPE	ASPE, ASPE ALL INDICATED AREAS WITH CLOSE JOINT JOINTS.

1. CONSTRUCTOR SHALL NOTIFY LANDSCAPE ARCHITECT PRIOR TO INITIATING WORK ON THE SITE.
2. DETERMINATION SHALL BE MADE BY THE LANDSCAPE ARCHITECT AS TO WHETHER THE EXISTING MATERIALS ARE TO BE REPAIRED OR REPLACED.
3. BEFORE ANY REPAIRS OR REPLACEMENT OF THE WORK, REMOVE ALL WASTE AND DEBRIS FOLLOWING THE REMOVAL OF THE EXISTING MATERIALS.
4. PLANT SHOW SHALL SPECIFY THE NUMBER OF PLANTS TO BE REPLACED OR REPAIRED. THE NUMBER PLANTS SHALL BE SPECIFIED IN THE PLANS. THE NUMBER PLANTS SHOWN SHALL SPECIFY THE NUMBER PLANTS TO BE REPLACED OR REPAIRED.
5. SPECIFICATIONS OF SIZE OR TYPE FOR PROPOSED SPECIES, SHADE TOLERANCE, AND PLANTING DEPTH SHALL BE SPECIFIED BY THE LANDSCAPE ARCHITECT. THE NUMBER OF PLANTS TO BE REPLACED OR REPAIRED SHALL BE SPECIFIED BY THE LANDSCAPE ARCHITECT.
6. SPECIFICATIONS OF SIZE OR TYPE FOR PROPOSED SPECIES, SHADE TOLERANCE, AND PLANTING DEPTH SHALL BE SPECIFIED BY THE LANDSCAPE ARCHITECT. THE NUMBER OF PLANTS TO BE REPLACED OR REPAIRED SHALL BE SPECIFIED BY THE LANDSCAPE ARCHITECT.
7. MATERIALS SHOULD BE REPLACED OR REPAIRED TO THE SAME OR BETTER QUALITY AS THE ORIGINAL MATERIALS. THE MATERIALS SHOULD BE REPLACED OR REPAIRED TO THE SAME OR BETTER QUALITY AS THE ORIGINAL MATERIALS.