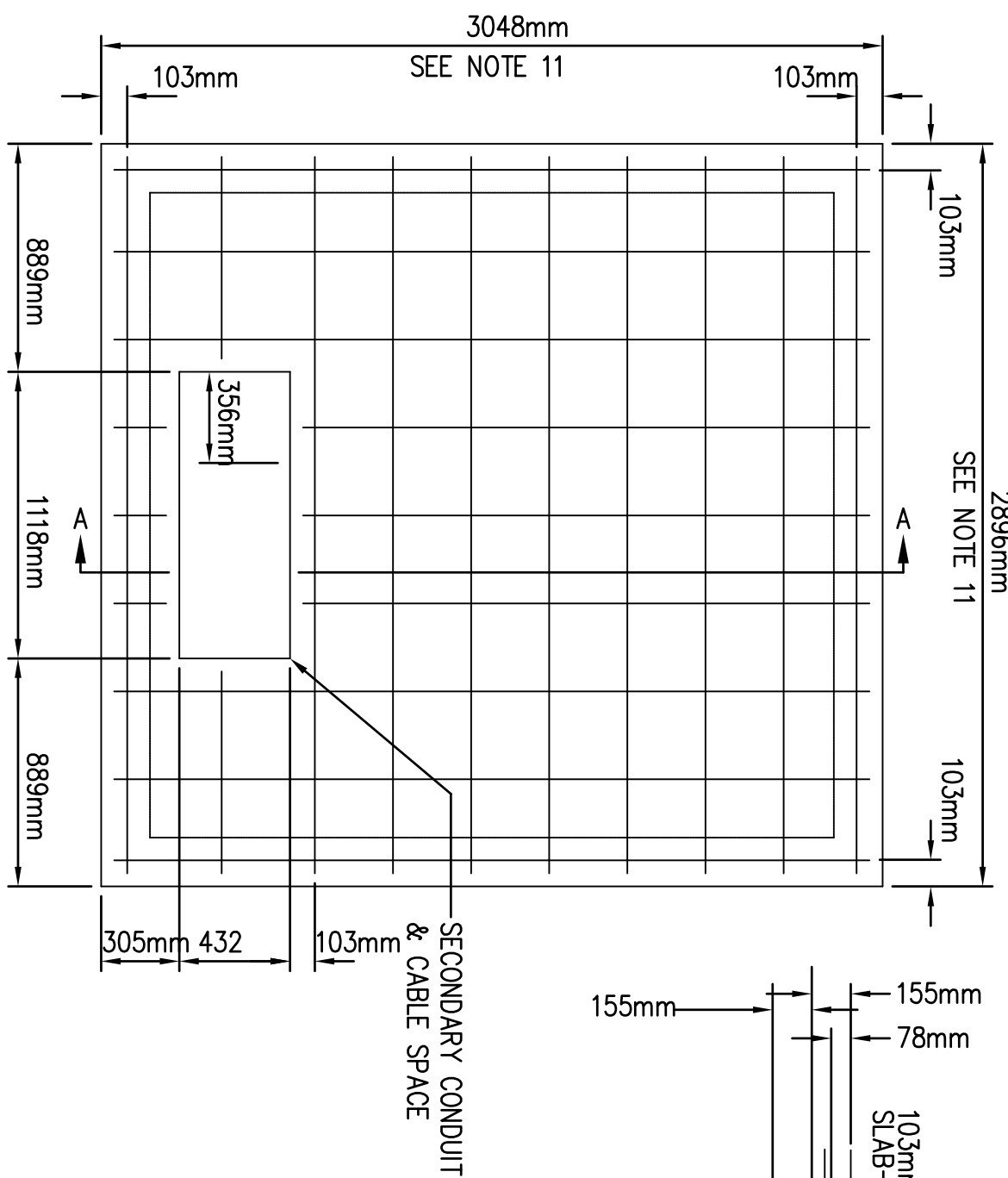


NOTE: REFERENCE SPECIFICATIONS FOR SUPPORTS AND SEPARATORS. FOLLOW THESE INSTALLATION DETAILS FOR OTHER DUCT VARIATIONS - 1 WAY, 6 WAY, 8 WAY, ETC.

1 CONCRETE ENCASED DUCT DETAIL
 E504 NOT TO SCALE

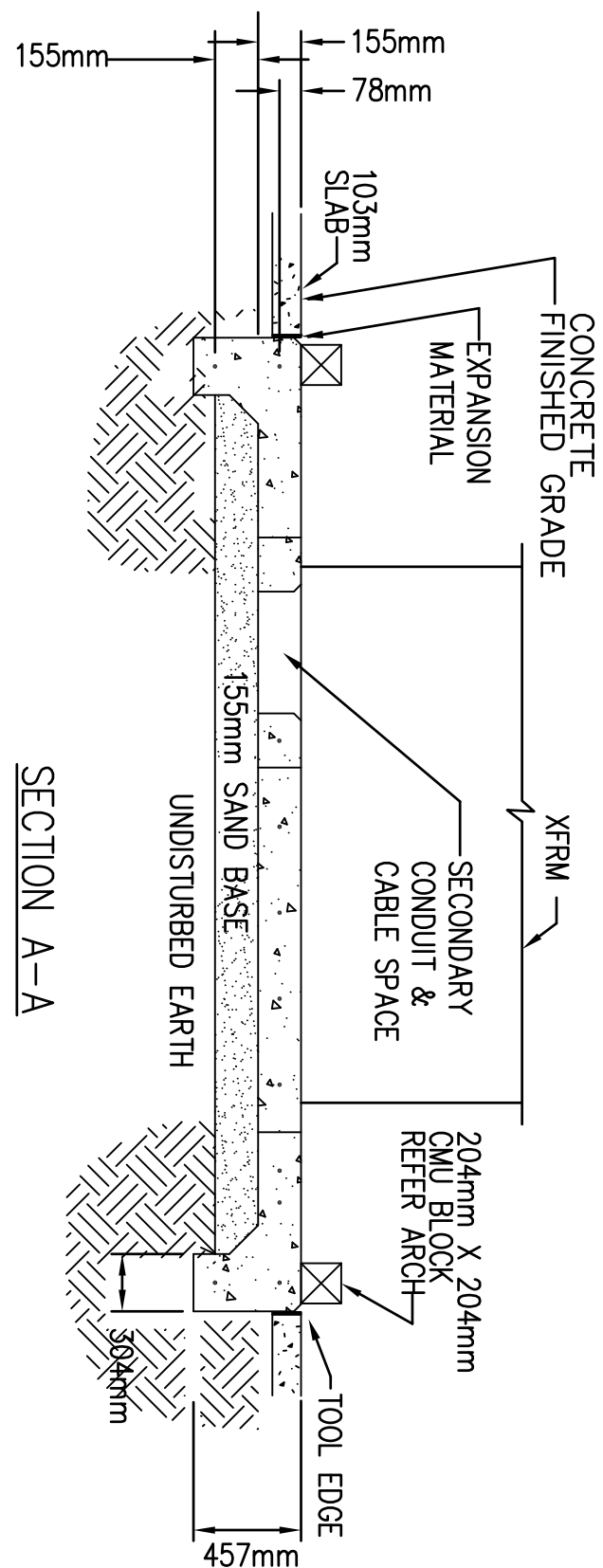
NOTE: SEE SHEET E-401 FOR DUCT LOCATIONS.



2 TRANSFORMER PAD DETAIL
 E504 NOT TO SCALE

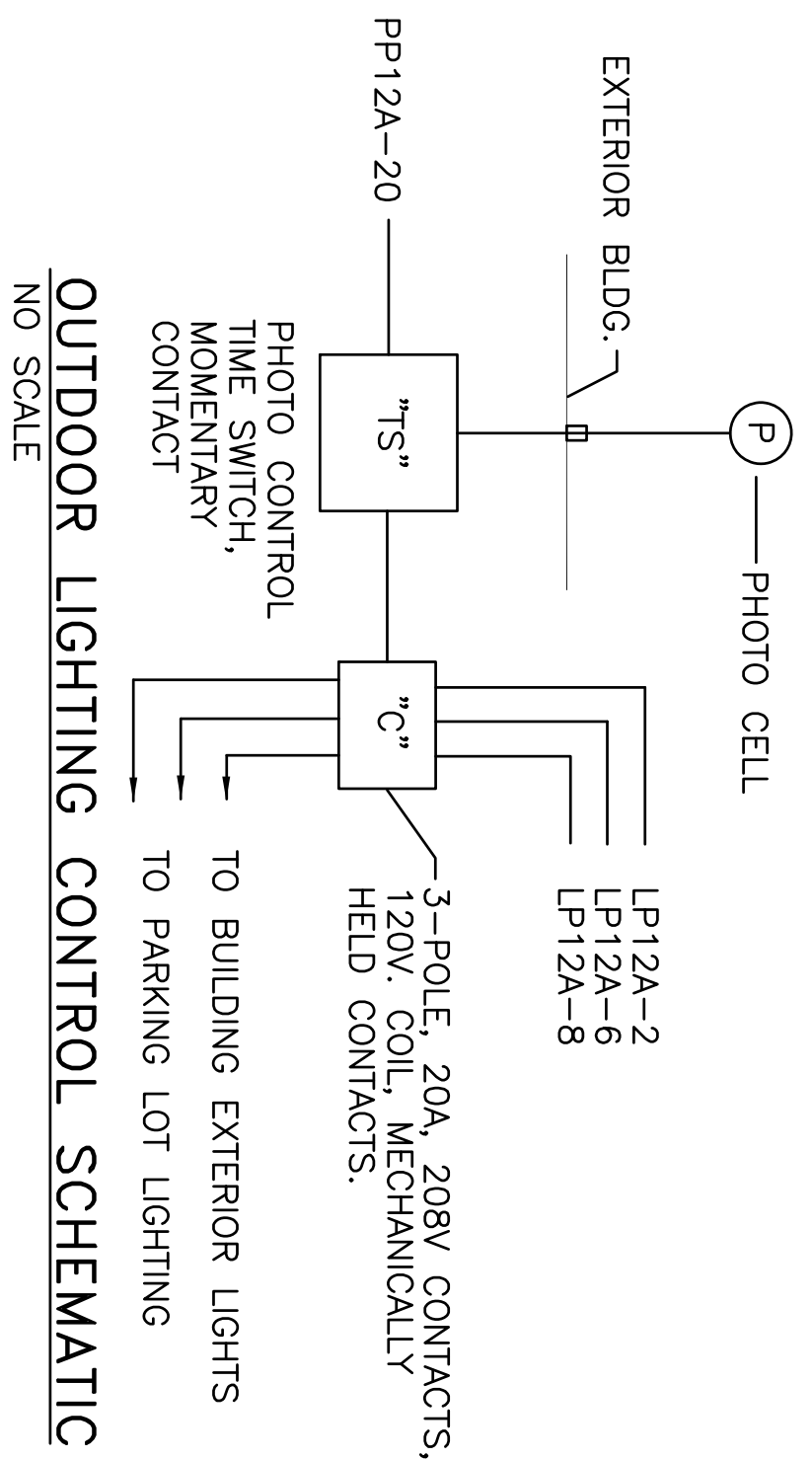
NOTE: SEE SHEET E-401 FOR TRANSFORMER LOCATIONS.

UTILIZE SAME DESIGN PARAMETERS FOR LOAD-BREAK SWITCH CONCRETE PAD AS TRANSFORMER PAD. SIZE PAD TO ALLOW 150mm MINIMUM CLEARANCE AROUND SWITCH. DO NOT EXTEND CONCRETE PAD FOR MAINTENANCE.

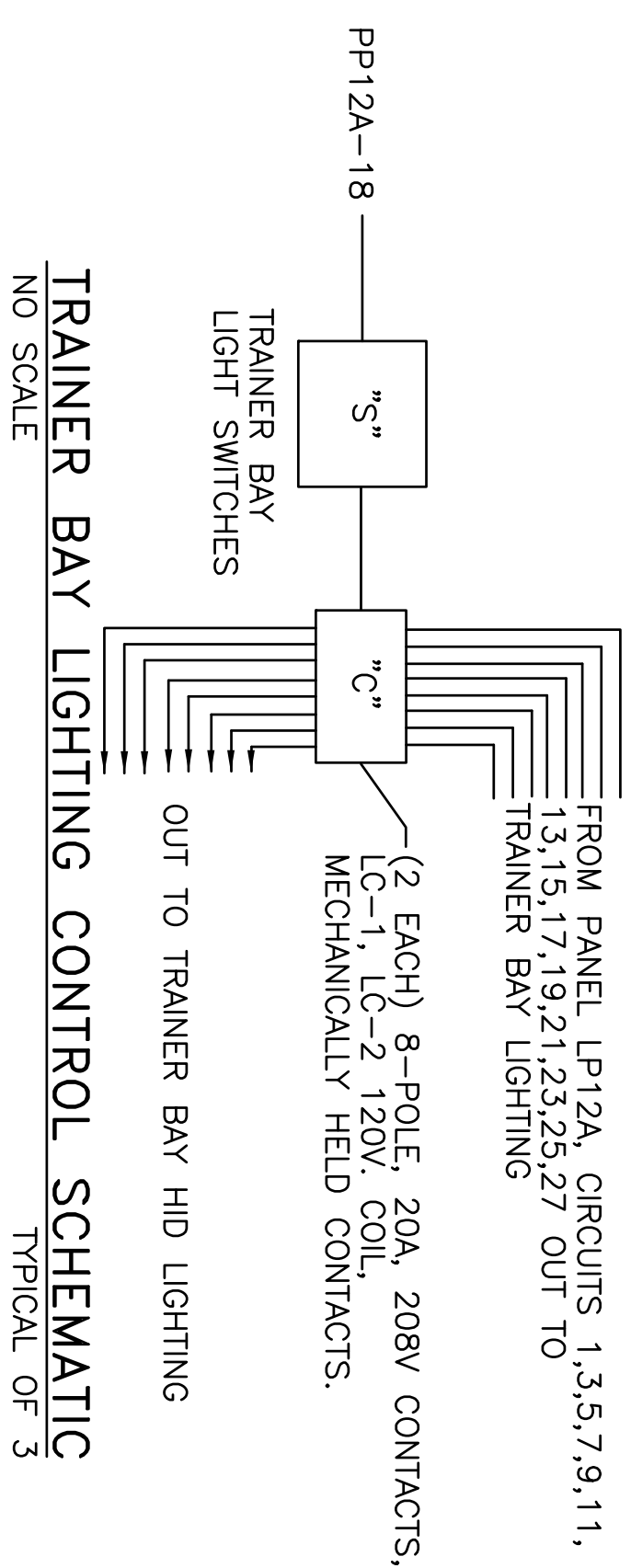


TRANSFORMER PAD NOTES

- PAD SHALL BE INSTALLED ON A 155mm SAND CUSHION.
- REINFORCING STEEL TO BE NO. 4, GRADE 40, AND IS TO BE TIED WITH MINIMUM NO. 16 THE WIRE. STEEL TO BE PLACED ON APPROXIMATELY 305mm CENTERS BOTH WAYS AND SUPPORTED TO PROVIDE 78mm CLEARANCE FROM BOTTOM AND 103mm CLEARANCE FROM EDGE OF SLAB. THE ENDS OF THE STEEL TO BE 78mm FROM SIDES AND 35mm FROM WINDOWS.
- MAXIMUM SIZE AGGREGATE 27mm.
- CONCRETE TO BE 211 Kg/cm sq. AT 28 DAYS WITH MINIMUM OF 3.82 SACKS OF CEMENT PER CUBIC METER CONCRETE.
- GRADE BEAMS MAY BE OMITTED WHEN SLAB IS PLACED ON CALICHE, SANDSTONE ROCK, OR OTHER VERY DENSE SOILS (WHEN APPROVED BY CONTRACTING OFFICER).
- TOP SURFACE OF PAD TO BE LEVEL WITH 3.2mm TOLERANCE. SURFACE TO BE FINISHED BY FLOAT AND STEEL TROWEL. EDGES TO HAVE TOOL FINISH.
- ALL EXPOSED CONCRETE TO BE TREATED IMMEDIATELY AFTER FINISHING WITH AN APPROVED MEMBRANE TYPE CURING COMPOUND (SIMILAR TO SOUTHERN STATES CHEMICAL) APPLIED WITH AN APPROVED SPRAYER.
- SLAB TO CURE FOR A MINIMUM OF 7 DAYS BEFORE LOADING.
- CONCRETE TO BE DRILLED AND EXPANSION ANCHORS INSTALLED TO ACCOMMODATE TRANSFORMER HOLD DOWN BOLTS AND CLEATS.
- INSTALL 21mm x 3048mm COPPERCLAD GROUND ROD, BLACKBURN No. 6258P OR EQUAL, IN PRIMARY COMPARTMENT EXTENDING 78mm ABOVE SLAB.
- THIS DISTANCE MAY BE REDUCED TO A MINIMUM OF ACTUAL TRANSFORMER DIMENSION (INCLUDING COOLING FINS) PLUS 305mm. CONCRETE SLAB FOR TRANSFORMER AND ASSOCIATED MAINTENANCE SPACE SHALL BE EXTENDED 1524mm IN ALL DIRECTIONS. REFER TO SECTION A-A AND ARCH. DWGS. FOR MORE INFO.



OUTDOOR LIGHTING CONTROL SCHEMATIC
 NO SCALE



TRAINER BAY LIGHTING CONTROL SCHEMATIC
 TYPICAL OF 3
 NO SCALE

ADAL C-130J AIRCREW FUSELAGE TRAINER
 LRAFB, LITTLE ROCK AR.
 Project No. NKAK 043005

ELECTRICAL DETAILS - SHEET 2

DEPARTMENT OF THE ARMY
 U.S. ARMY CORPS OF ENGINEERS
 LITTLE ROCK DISTRICT
 LITTLE ROCK, ARKANSAS

Atkins Benham
 a member of the WS Atkins group of companies

Designed by: RH
 Reviewed by: PWD
 Submitted by: Atkins Benham, Inc.
 Invitation No.: DKAC03-03-R-0021

Drawn by: MB
 Drwg. Code:
 Plot date: 02/04/03
 Plot scale: 1:1
 Contract No.: DKAC03-03-B-

Mark	Description	Date	Appr.	Mark	Description	Date	Appr.

U.S. ARMY CORPS OF ENGINEERS
 LITTLE ROCK DISTRICT

Sheet Reference Number:
E-504
 Sheet 87 of 91