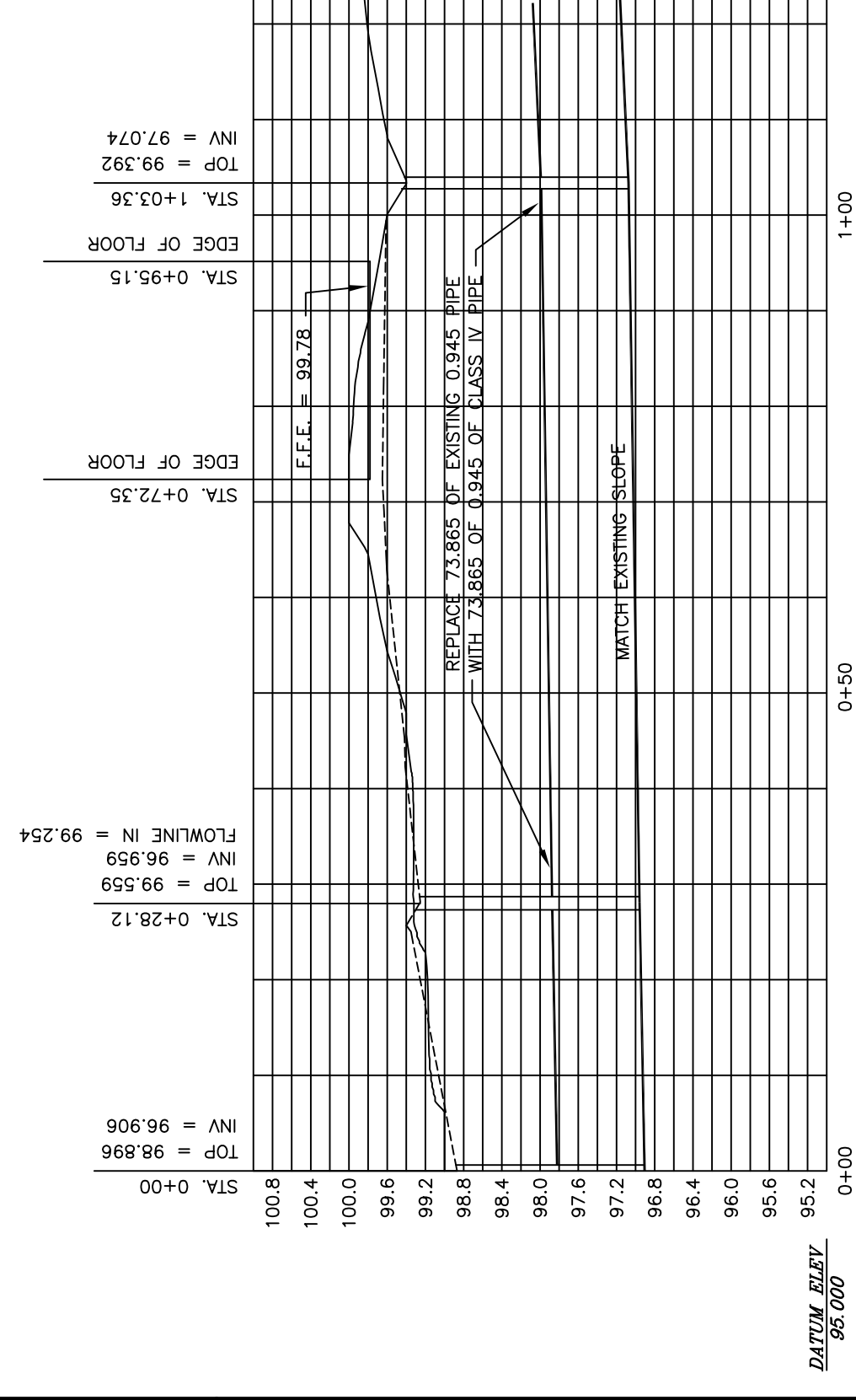
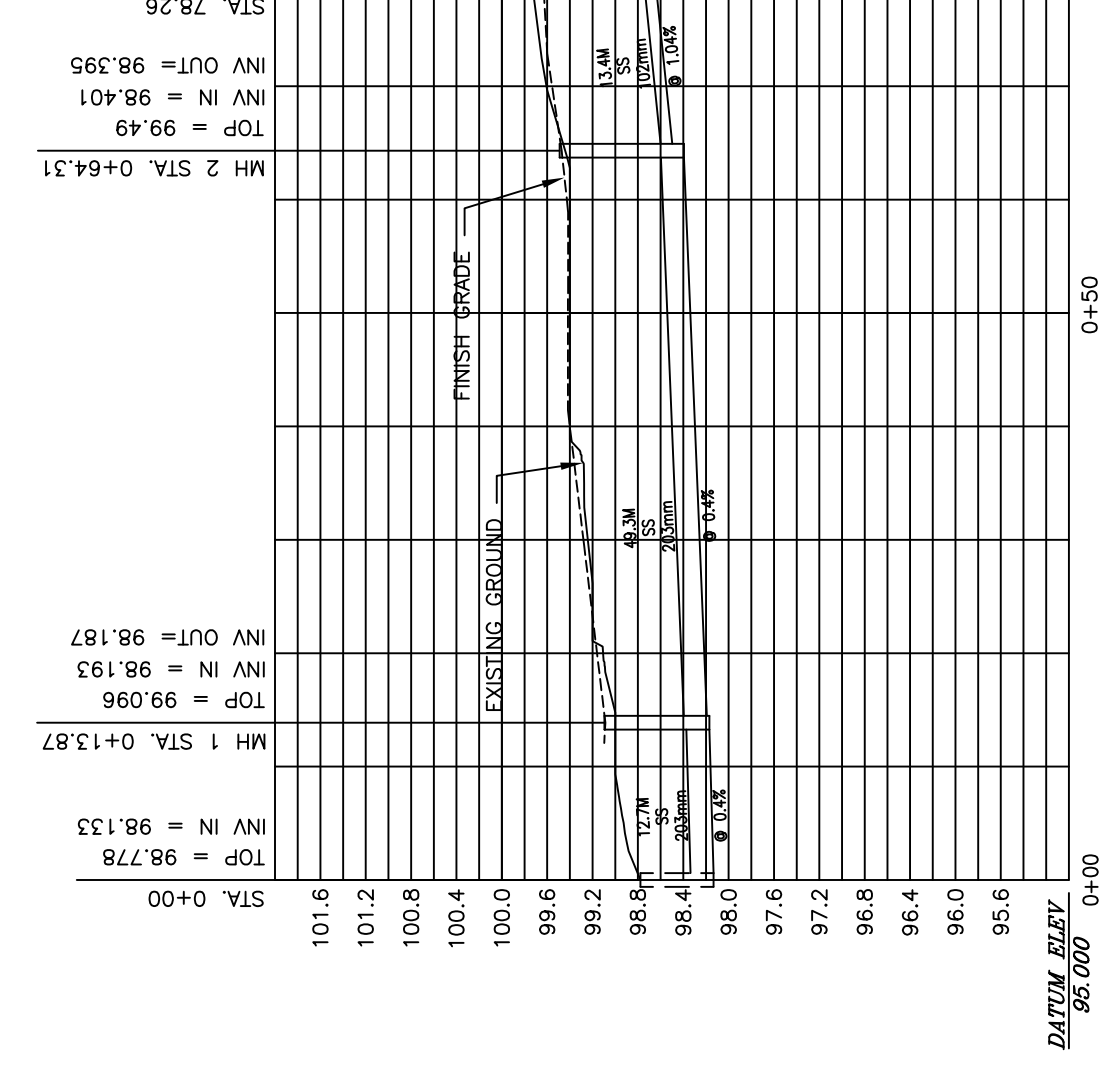


NOTE:
USE WATERTIGHT RUBBER GASKETS AT ALL PIPE JOINTS.

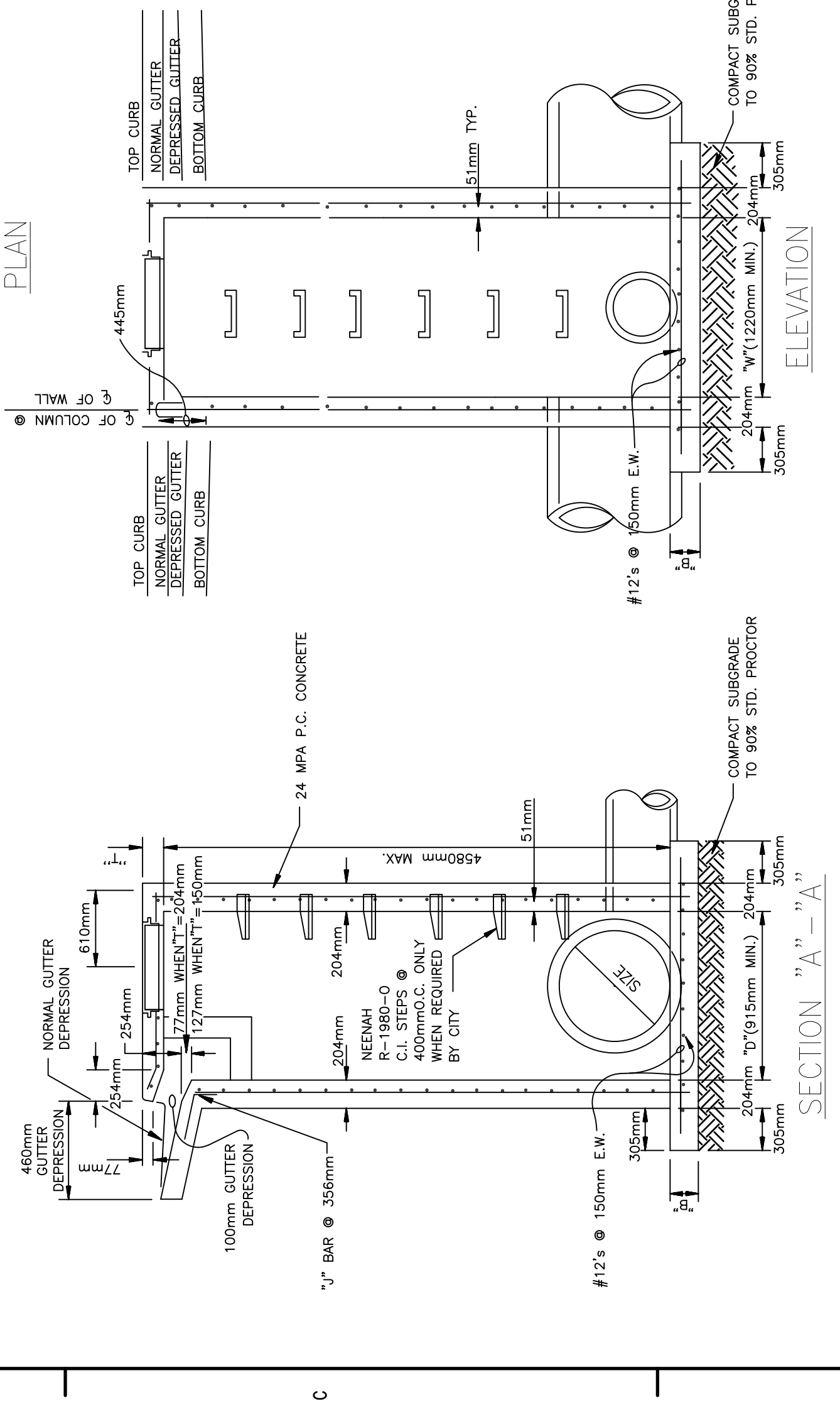
③ STORM SEWER PROFILE



④ SANITARY SEWER PROFILE



① CURB INLET WITHOUT THROAT EXTENSIONS



SECTION "A" - "A"

ELEVATION

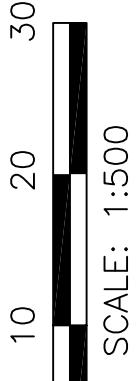
REINFORCEMENT SCHEDULE, TOP

REINFORCEMENT SCHEDULE, TOP	
WIDTH ("W") & DEPTH ("D")	HOR. VERT.
BETWEEN 915mm & 1220mm	#12s @ 229mm
BETWEEN 1220mm & 3670mm	#19s @ 229mm
BETWEEN 3670mm & 4015mm	#12s @ 250mm
DEPTHS ("D")	"T" DIMENSIONS
BETWEEN 915mm & 2135mm	150mm ± PIPE THICKNESS
BETWEEN 2135mm & 2390mm	150mm ± PIPE THICKNESS
BETWEEN 2390mm & 2950mm	150mm ± PIPE THICKNESS
BETWEEN 2950mm & 3510mm	150mm ± PIPE THICKNESS
BETWEEN 3510mm & 4015mm	150mm ± PIPE THICKNESS

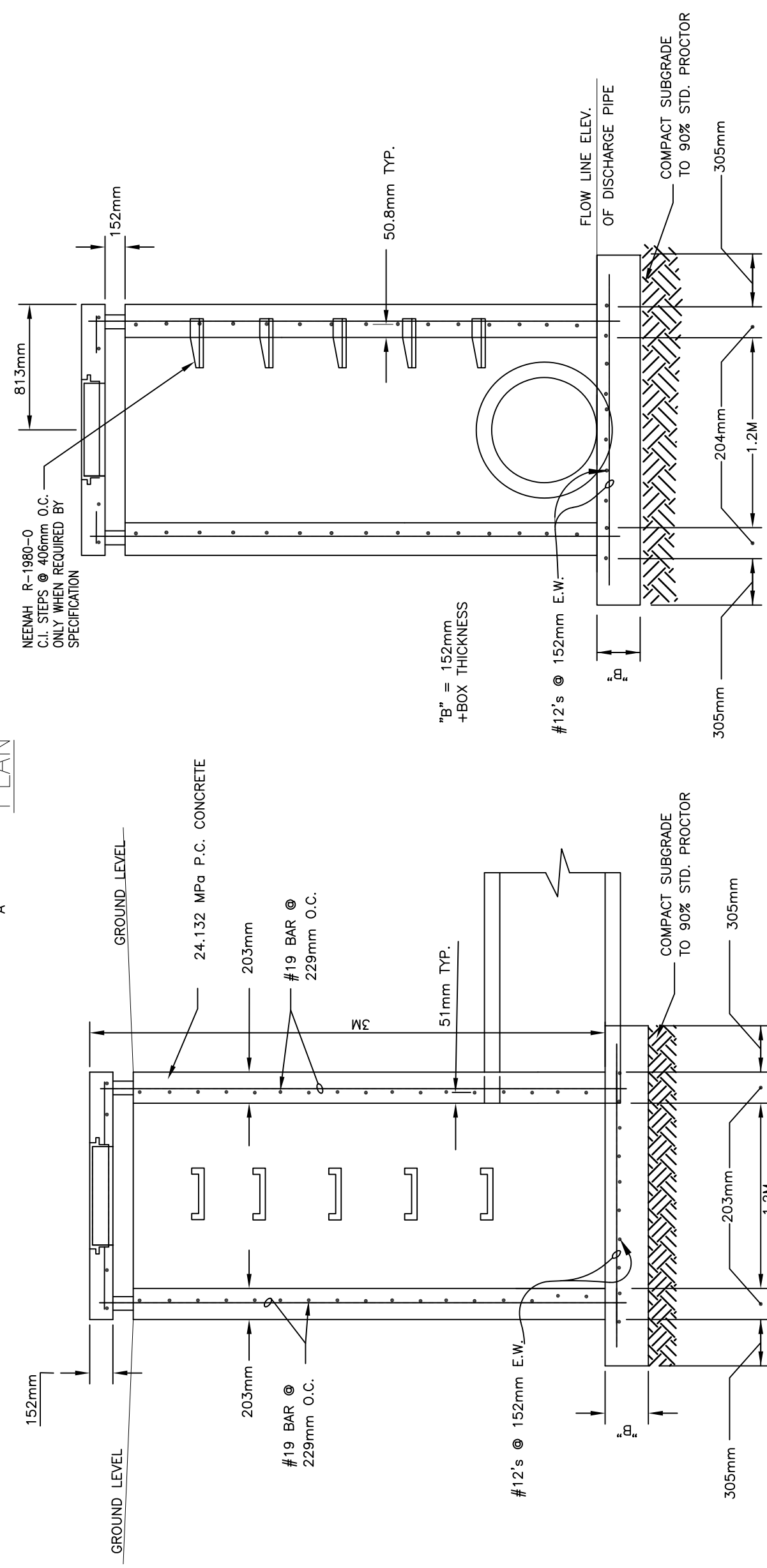
REINFORCEMENT SCHEDULE, WALLS	
WIDTH ("W") & DEPTH ("D")	HOR. VERT.
BETWEEN 915mm & 1220mm	#12s @ 229mm
BETWEEN 1220mm & 3670mm	#19s @ 229mm
BETWEEN 3670mm & 4015mm	#12s @ 250mm

TABLE OF "W" & "D" DIMENSIONS	
PIPE SIZE	SEWN OF PIPES ENTERING AND LEAVING INLET
450mm	30"
600mm	45"
750mm	60"
900mm	75"
1050mm	90"
1200mm	105"
1350mm	120"
1500mm	135"
1650mm	150"
1800mm	165"
2000mm	180"
2135mm	195"
2390mm	210"
2590mm	230"
2870mm	255"
3350mm	300"
3810mm	345"
4318mm	390"
4826mm	435"

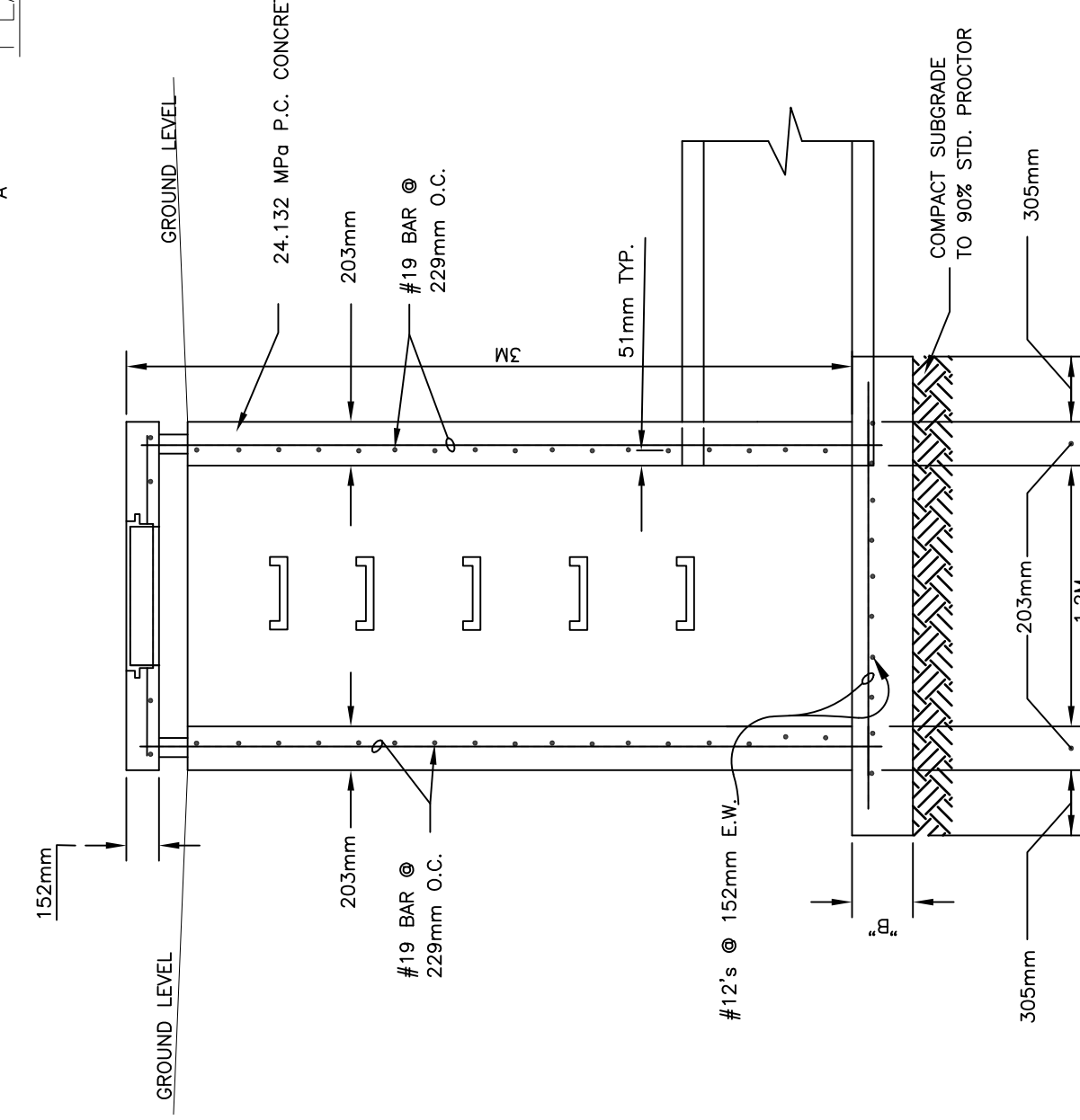
TABLE OF "W" & "D" DIMENSIONS	
PIPE SIZE	SEWN OF PIPES ENTERING AND LEAVING INLET
450mm	30"
600mm	45"
750mm	60"
900mm	75"
1050mm	90"
1200mm	105"
1350mm	120"
1500mm	135"
1650mm	150"
1800mm	165"
2000mm	180"
2135mm	195"
2390mm	210"
2590mm	230"
2870mm	255"
3350mm	300"
3810mm	345"
4318mm	390"
4826mm	435"



SECTION "B" - "B"

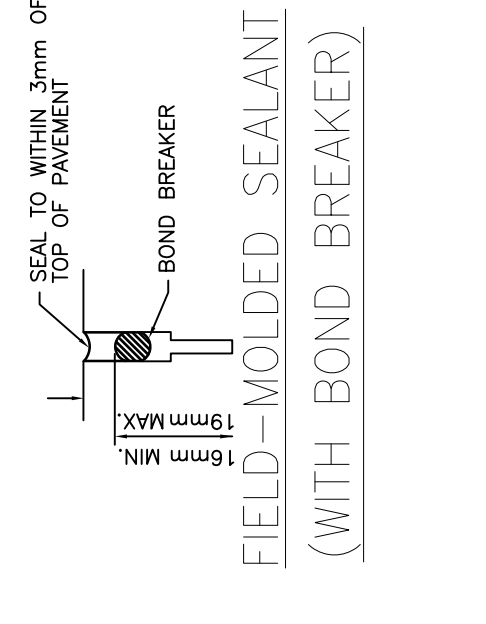


SECTION "A" - "A"

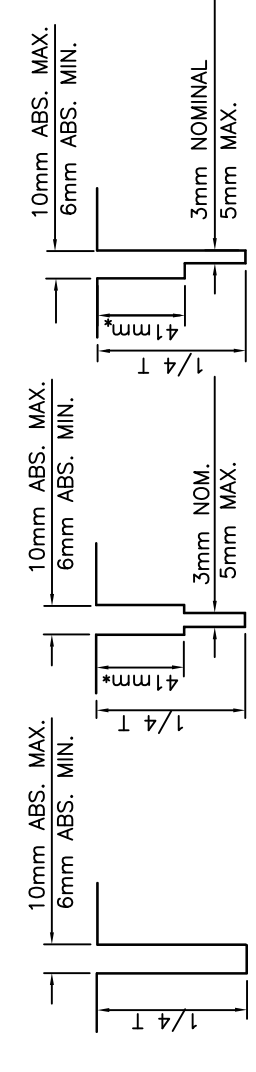


NOTE:
USE HEAVY DUTY RING AND COVER IN ALL AREAS AND ON CURB INLETS

② EXPANSION/CONTRACTION DETAIL



ALTERNATE SHAPES OF SAW CUTS FOR P.C. CONCRETE PAVEMENT



*THIS DIMENSION IS BASED ON THE USE OF A COPR OR COPRE TYPE BOND BREAKER. IF A TAPE TYPE BOND BREAKER IS USED, THIS DIMENSION SHALL BE REDUCED AS NECESSARY TO MAINTAIN SHAPE DIMENSIONS OF SEALANT.

Sheet Reference Number: C-300
Sheet 10 of 91

ADAL C-130U AIRCREW FUSELAGE TRAINER
LR\FB, LITTLE ROCK AR
Project No. WNAK 043005
STORM PROFILE

U.S. ARMY CORPS OF ENGINEERS
LITTLE ROCK, ARKANSAS
Benham
Submitted by: MWH
Designed by: MWH
Reviewed by: MWH
Dwg. Code: 19300K-000
File Name: 19300K-000
Contract Date: 02/04/03
Contract No. DKA01-03-0-021

Mark	Description	Date	Appr.

U.S. ARMY CORPS OF ENGINEERS
LITTLE ROCK DISTRICT