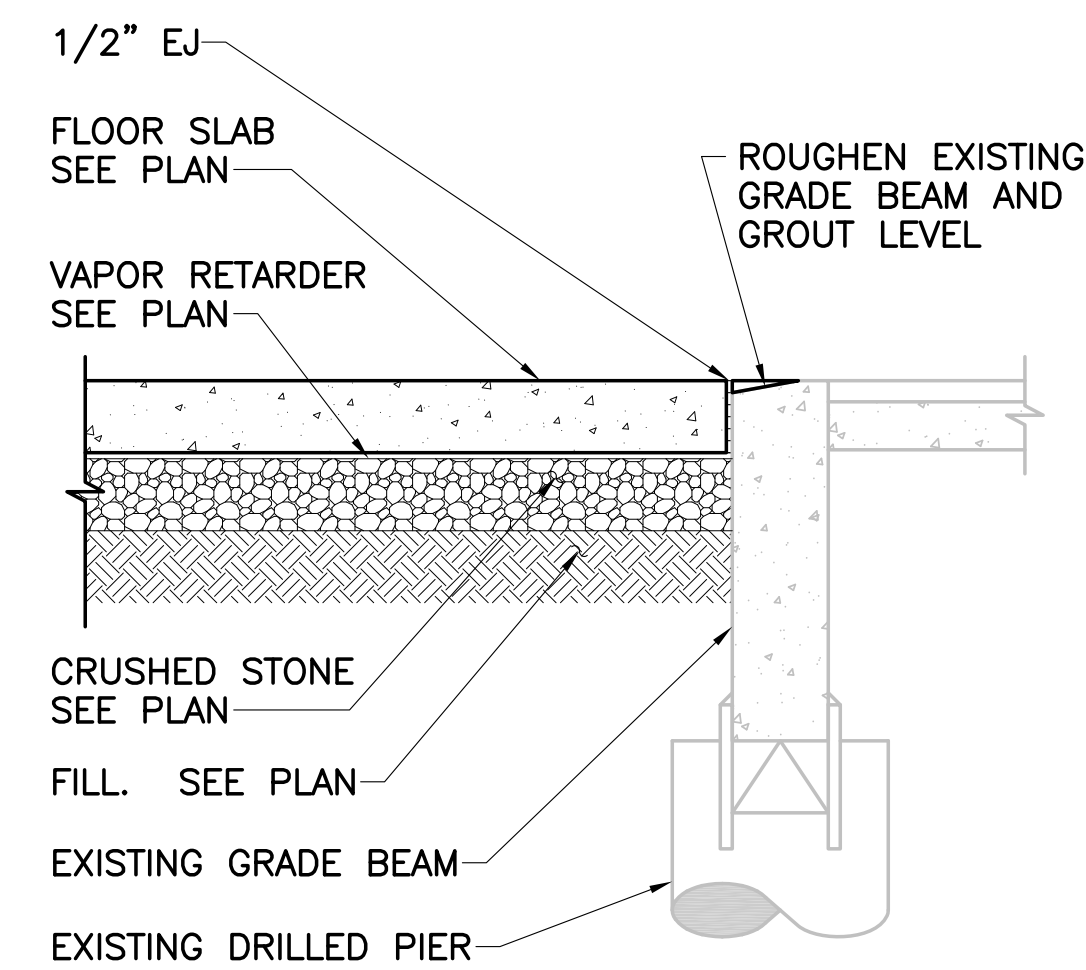
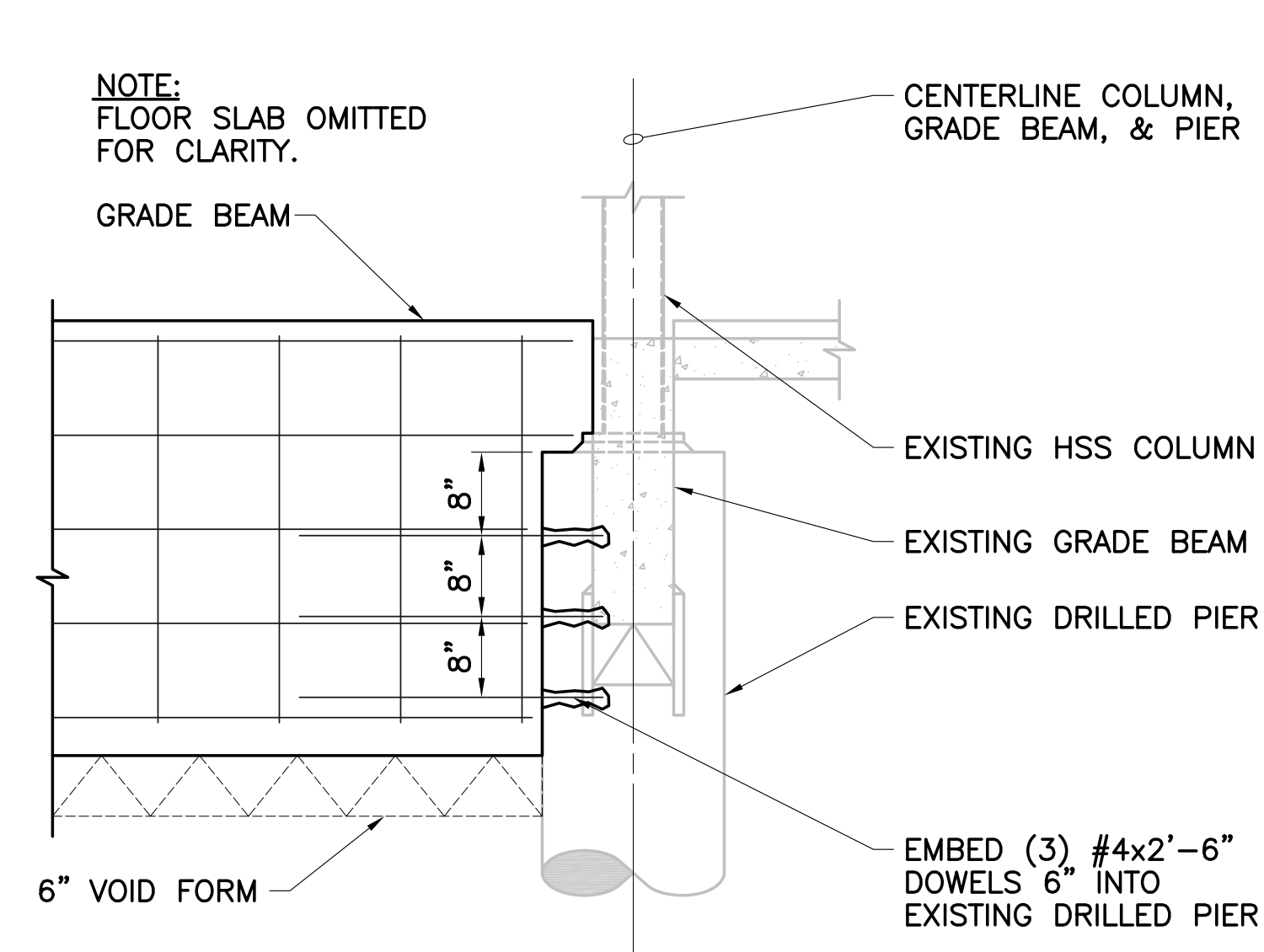


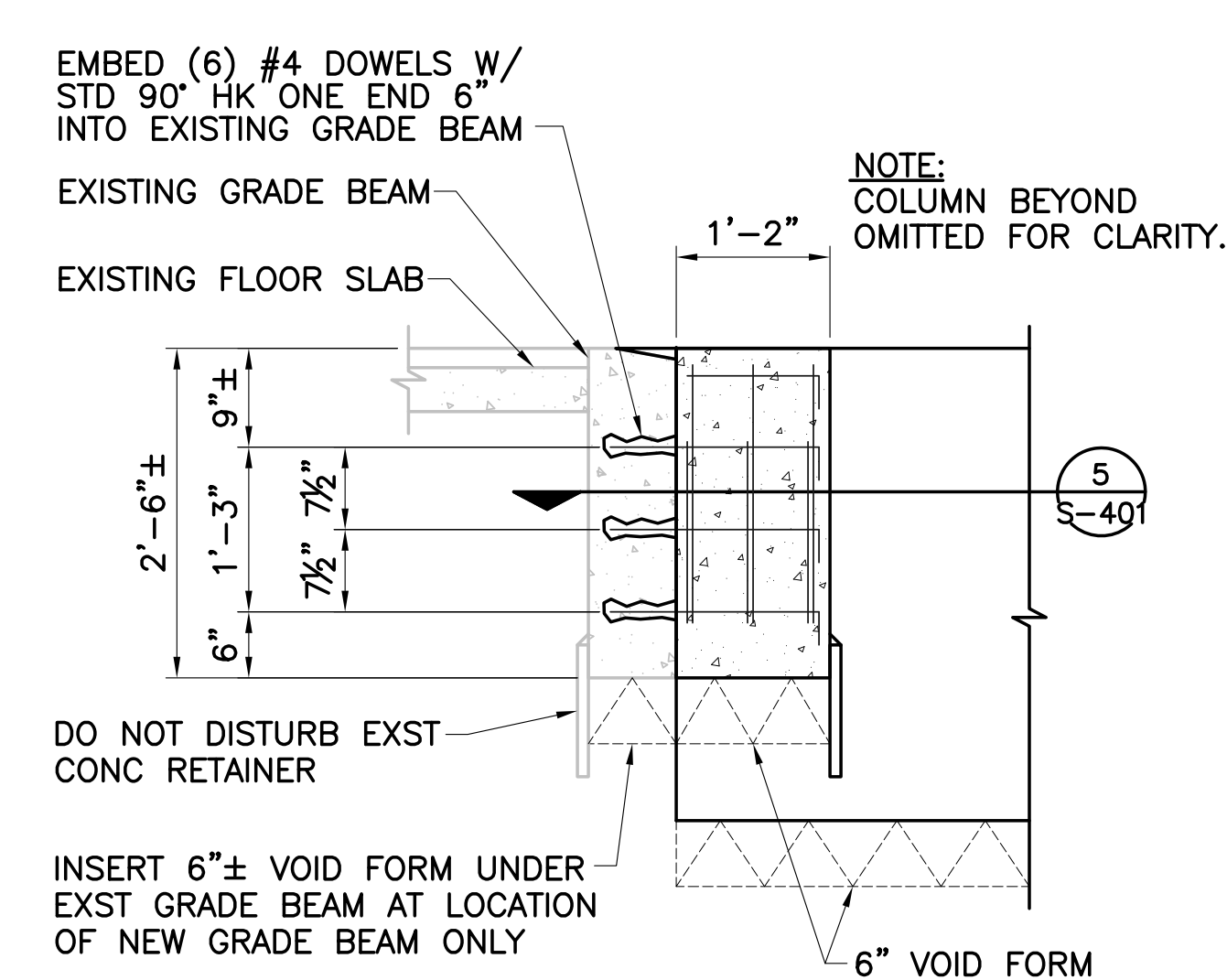
SECTION
SCALE: 3/4"=1'-0"



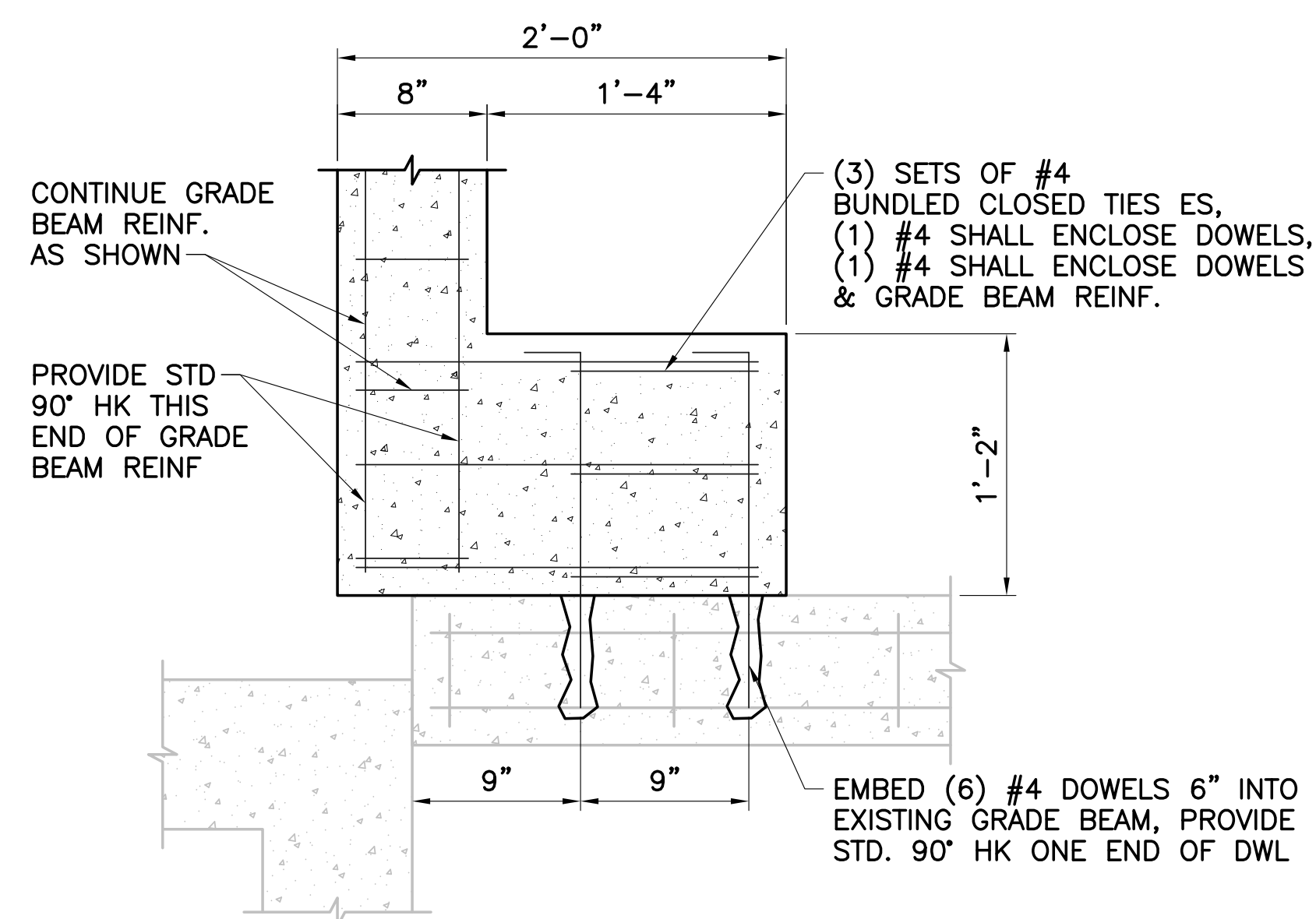
SECTION
SCALE: 3/4"=1'-0"



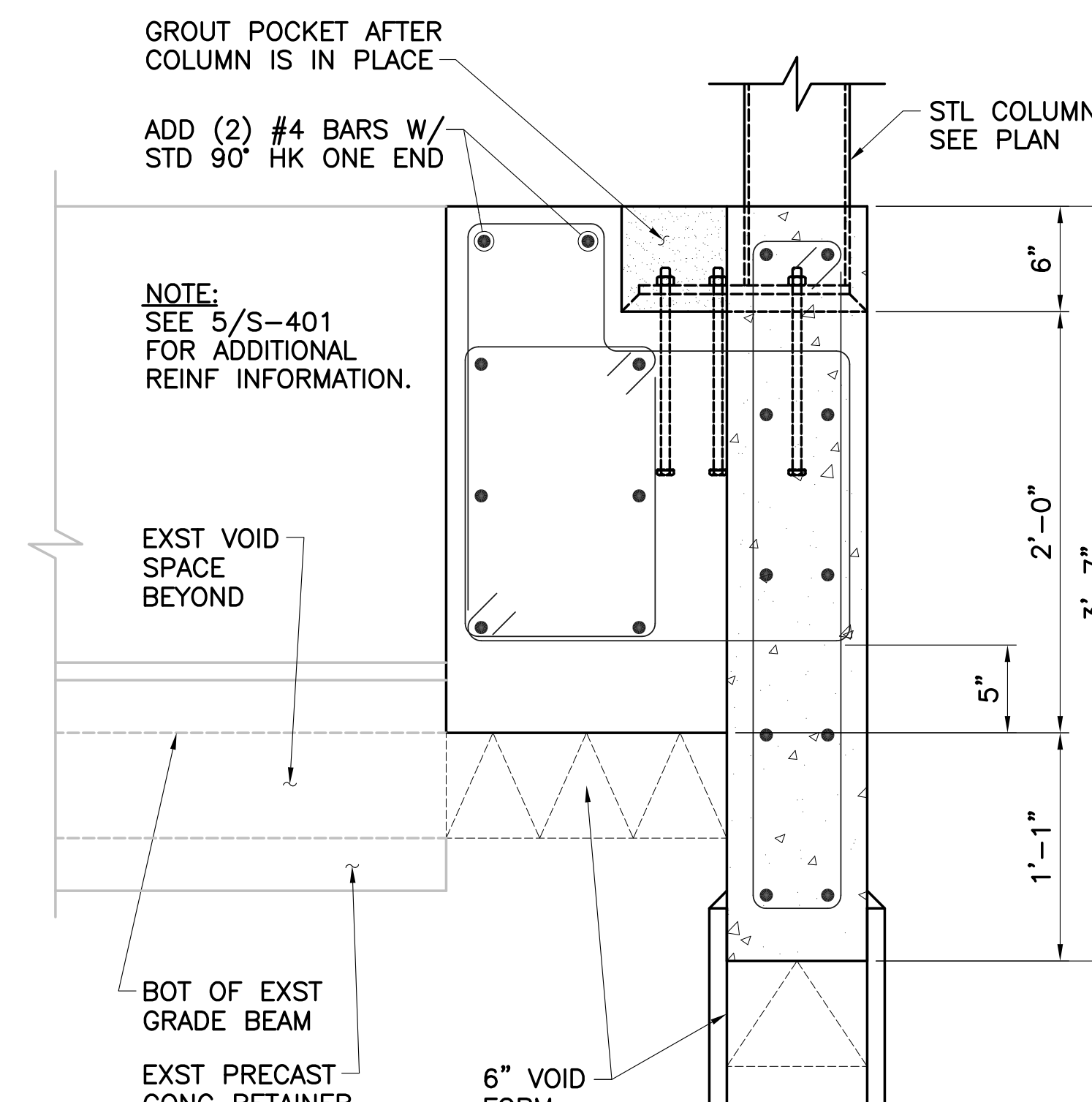
SECTION
SCALE: 3/4"=1'-0"



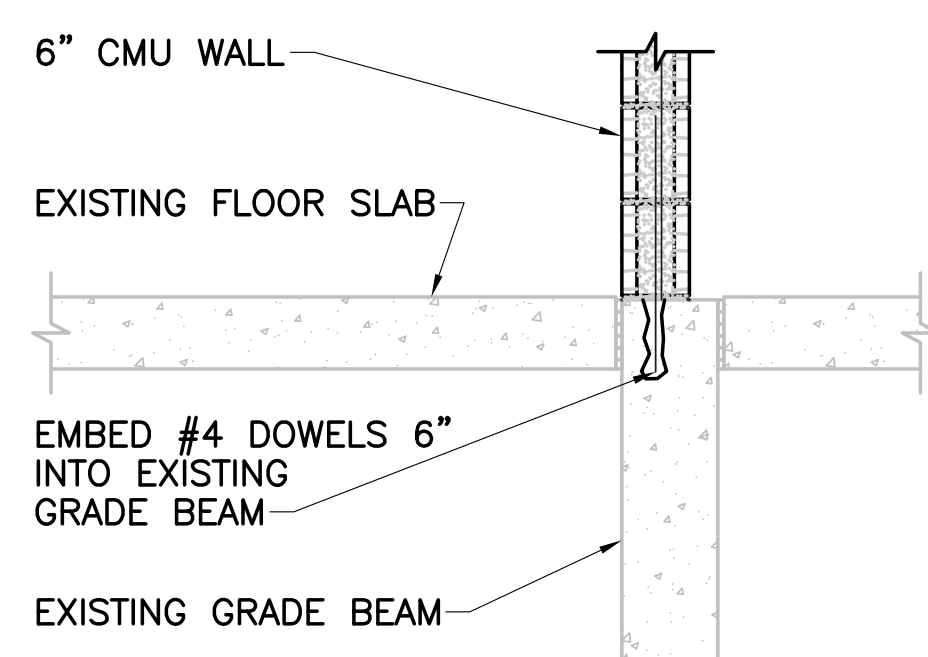
4 SECTION
S-401 SCALE: 3/4"=1'-0"



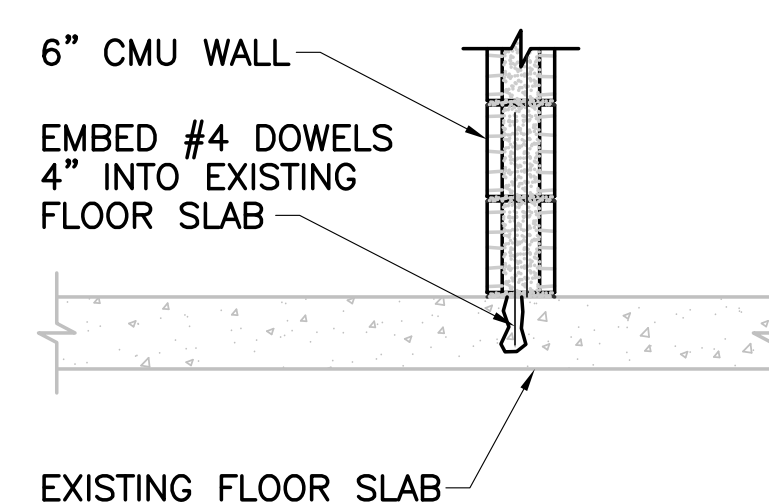
SECTION
SCALE: 1 1/2"=1'-0"



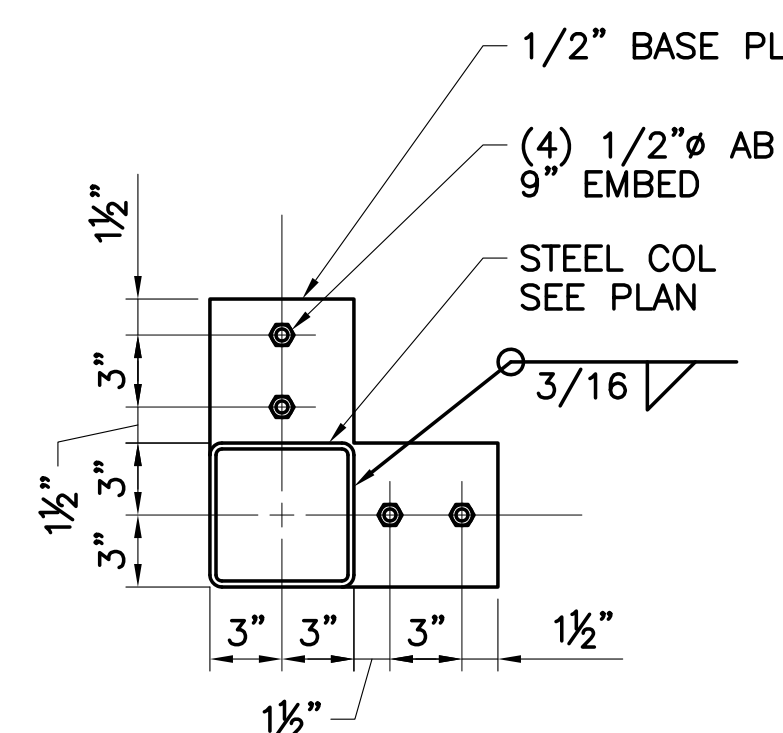
7 SECTION
S-401 SCALE: 1 1/2"=1'-0"



8 SECTION
S-401 SCALE: 3/4"=1'-0"



9 SECTION
S-401 SCALE: 3/4"=1'-0"



SECTION
SCALE: 1 1/2"=1'-0"



LITTLE ROCK A.F.B.
ARKANSAS



1010 Battery St.
Little Rock, AR
72202

501-376-3633

www.GarverUSA.com

CROMWELL
ARCHITECTS ENGINEERS

101 SOUTH SPRING ST
LITTLE ROCK AR 72201
TELEPHONE 501-372-2900
FACSIMILE 501-372-0482

[illegible]

PROJECT TITLE
REPAIR & RENOVATE MED. CLINIC PH IV A
LITTLE ROCK AIR FORCE BASE
JACKSONVILLE, ARKANSAS

STRUCTURAL FOUNDATION
SECTIONS

DRAWN BY SLB	LEAD DESIGNER JCJ
TECH REVIEWER JTW	PROJECT NUMBER NKAK 06-8006 4A
DESIGNED BY JCJ	SHEET S-401
DATE 13 MAY 2009	
SCALE AS SHOWN	24 OF 51