

REVISIONS	DATE	DESCRIPTION	APPROVED	DATE	DESCRIPTION
1	8/07/2005	REVISIONS AS-BUILT			
2	10/31/2003	ISSUED FOR FINAL WORK PLAN			
3	10/14/2003	ISSUED FOR AS-BUILT			
4	07/17/2003	AMENDMENT			

DESIGNED BY: DATE: 08/04/2003	PROJECT NO: 6503	CHECKED BY: DRAWING CODE:	REVIEWED BY: SOLICITATION NUMBER:
DRAWN BY:			
U.S. ARMY ENGINEERING AND SUPPORT CENTER CORPS OF ENGINEERS HUNTSVILLE, ALABAMA			
EARTHTECH	FLM		

RENOVATE CLINIC  
BUILDING 1090  
LITTLE ROCK AFB, ARKANSAS

**ZONE A  
WATER PIPING PLAN  
AS-BUILT**

SHEET  
REFERENCE  
NUMBER:  
**P1.14**  
SHEET X OF XX

1 PARTIAL PLAN OF AREA 'C' AND 'D' IN ZONE B

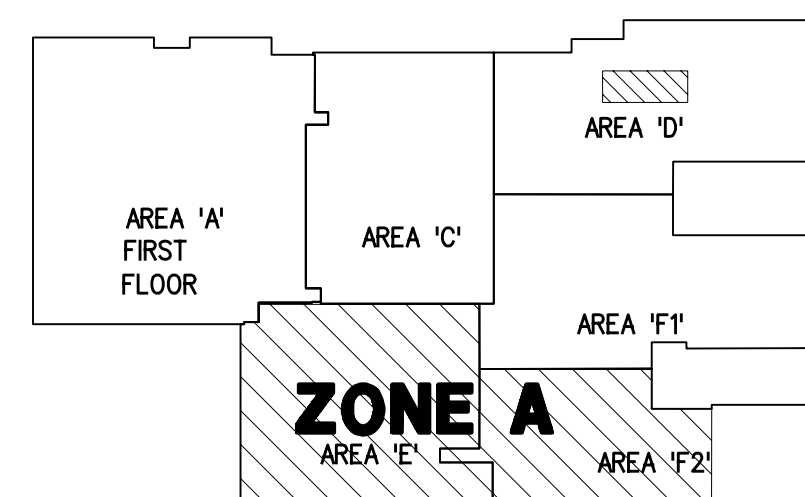
SCALE 1/8" = 1'-0"

2 ZONE A PLAN

SCALE 1/8" = 1'-0"

PLAN NOTES

- EXISTING 1/2" CW & 1/2" HW VALVES TO BE REPLACED WITH NEW 1/2" VALVES.
- SK-LAV-3 RELOCATED AS SHOWN. RUN DOMESTIC CW AND HW LINES.



KEY PLAN

N.T.S.

SCALE