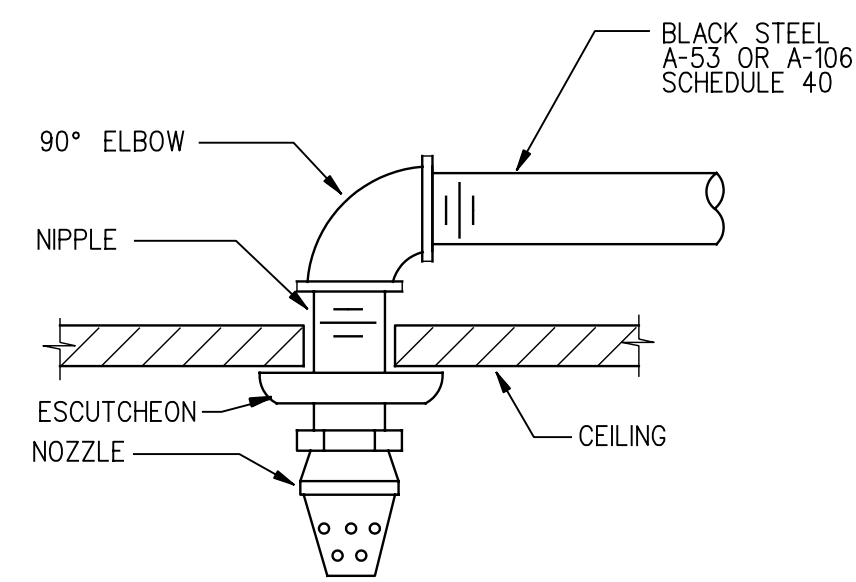
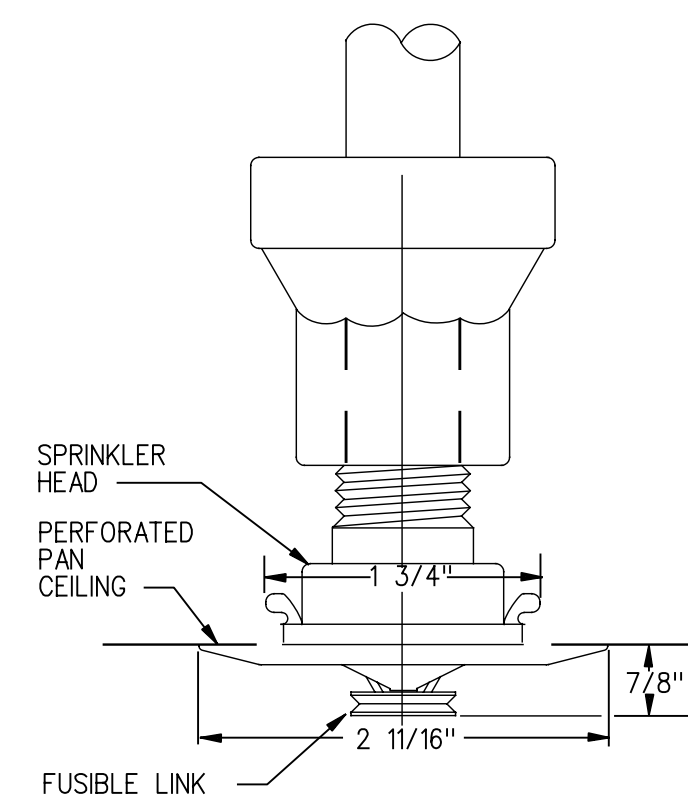


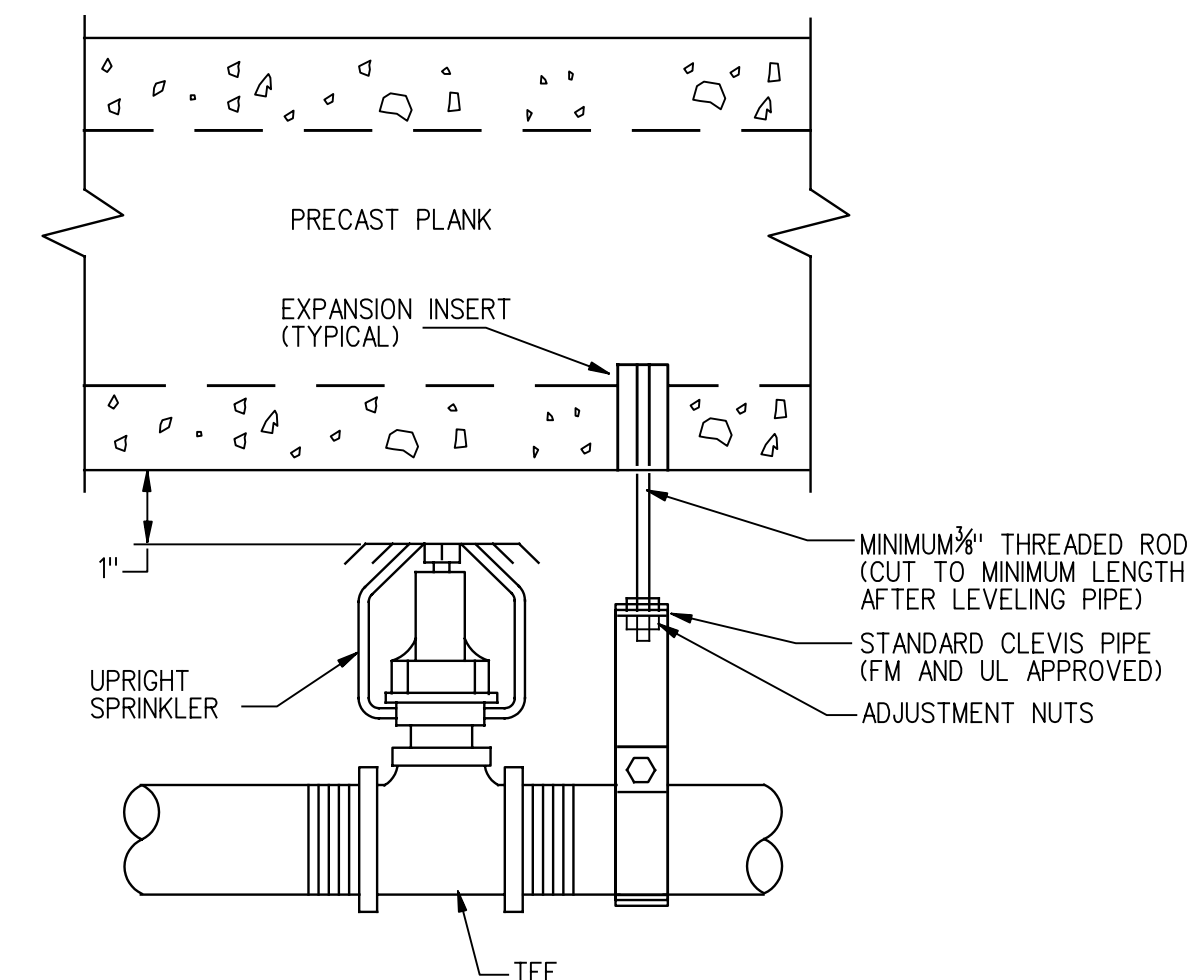
**1 HUB DRAIN**  
**NOT TO SCALE**



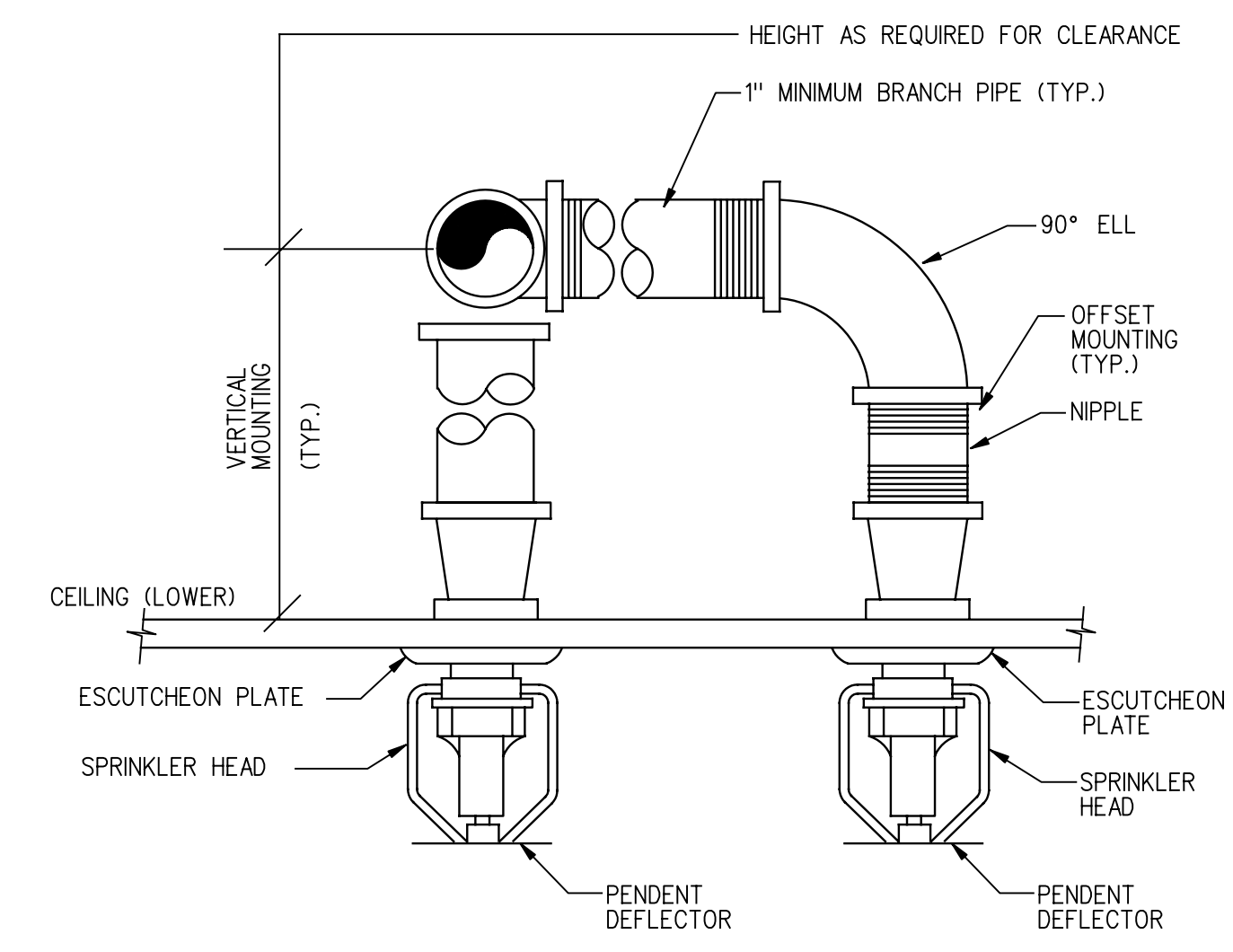
## 2 PENDANT NOZZLE CEILING MOUNTED



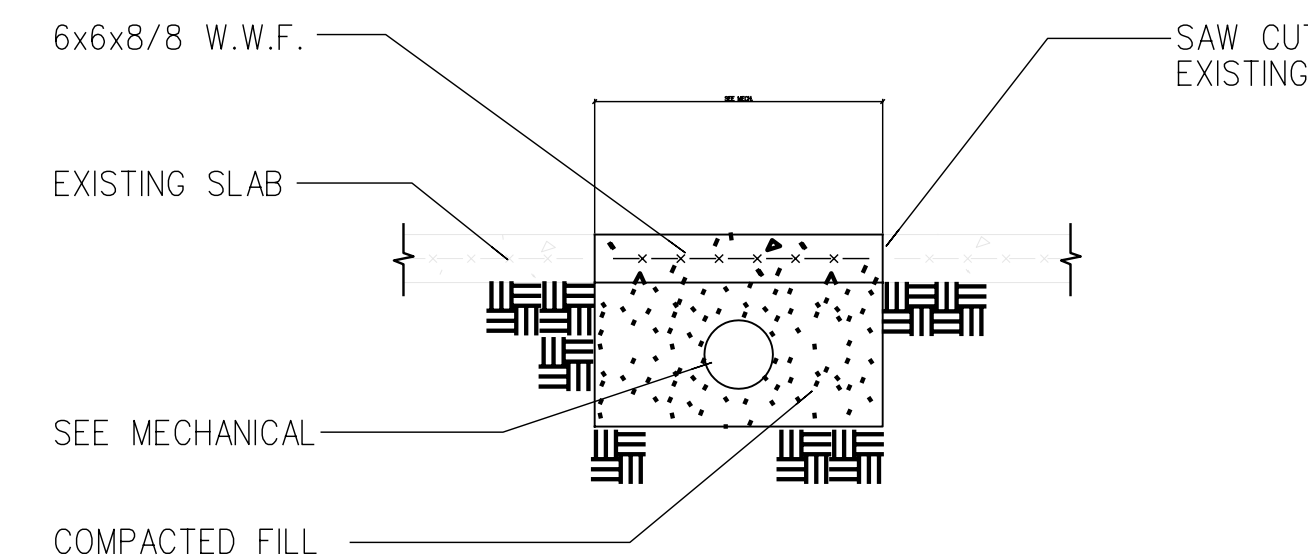
### 3 FLUSH MOUNTED SPRINKLER



#### 4 VERTICAL SPRINKLER MOUNTING

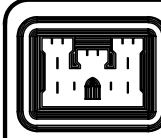


## 5 CEILING MOUNTED SPRINKLER





## 6 SLAB OVER PIPING

**SCALE: 3/4" = 1'-0"**



US Army Corps  
of Engineers  
Huntsville  
Alabama

REVISION	APPROVED SYMBOL	APPROVED DESCRIPTION	DATE	APPROVED
Δ		REVISIONS AS-BUILT	8/01/2005	
Δ		ISSUED FOR FINAL WORK PLAN	10/31/2003	
Δ		ISSUED FOR ERO	06/7/2003	
Δ		APPROVED DESCRIPTION		

U.S. ARMY ENGINEERING AND SUPPORT CENTER CORPS OF ENGINEERS HUNTSVILLE, ALABAMA	 	DESIGNED BY: S.A.L. DRAWN BY: C.S. CHECKED BY: R.W.H. REVIEWED BY:	DATE: 09/04/2003 PROJECT NO: E503 DRAWING CODE:
	3112 Northridge Ave. • Oak Grove, IL 60450 • (848) 374-0446		

RENOVATE CLINIC  
BUILDING 1090  
LITTLE ROCK AFB, ARKANSAS

**ZONE A & B  
DETAILS  
AS-BUILT**

SHEET  
REFERENCE  
NUMBER:  
**P1.17**

SHEET X OF XX

DATE\$ \$ON\$

---

1

1

1

1

1

1

--	--

1

1

L

[illegible][illegible]


1

1

```
$$$USER$$$
$$$DGN$$$
$$$DATE$$$
$$$PRF$$$
$$$PEN$$$
```

---

A

B

---

C

---

D

E

---

**F**

---

G

H

--	--

---
