

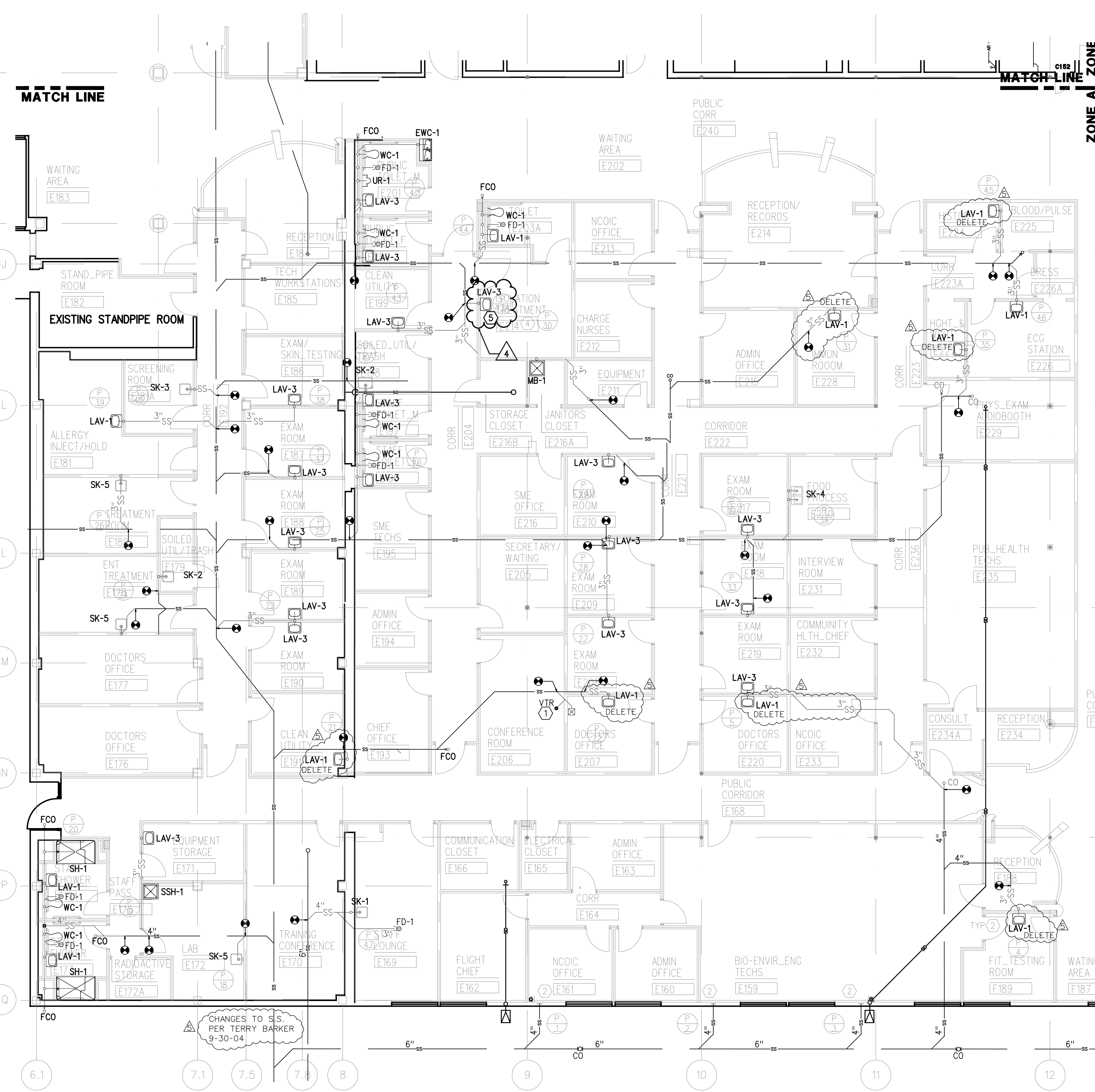
REVISIONS	DATE	DESCRIPTION
1	8/07/2005	ISSUED FOR FINAL WORK PLAN
2	10/31/2003	ISSUED FOR BID
3	10/17/2003	AMENDMENT
4		AMENDMENT
5		AMENDMENT
6		AMENDMENT
7		AMENDMENT
8		AMENDMENT
9		AMENDMENT
10		AMENDMENT
11		AMENDMENT
12		AMENDMENT
13		AMENDMENT
14		AMENDMENT
15		AMENDMENT
16		AMENDMENT
17		AMENDMENT
18		AMENDMENT
19		AMENDMENT
20		AMENDMENT
21		AMENDMENT
22		AMENDMENT
23		AMENDMENT
24		AMENDMENT
25		AMENDMENT
26		AMENDMENT
27		AMENDMENT
28		AMENDMENT
29		AMENDMENT
30		AMENDMENT

DESIGNED BY: DATE: 08/04/2003	PROJECT NO: 6503
DRAWN BY: C.S.	CHECKED BY: R.W.H.
REVIEWED BY: SOLICITATION NUMBER:	
U.S. ARMY ENGINEERING AND SUPPORT CENTER CORPS OF ENGINEERS HUNTSVILLE, ALABAMA	FLM T E C H 202 Huntsville, AL 35894-0001

RENOVATE CLINIC
BUILDING 1090
LITTLE ROCK AFB, ARKANSAS

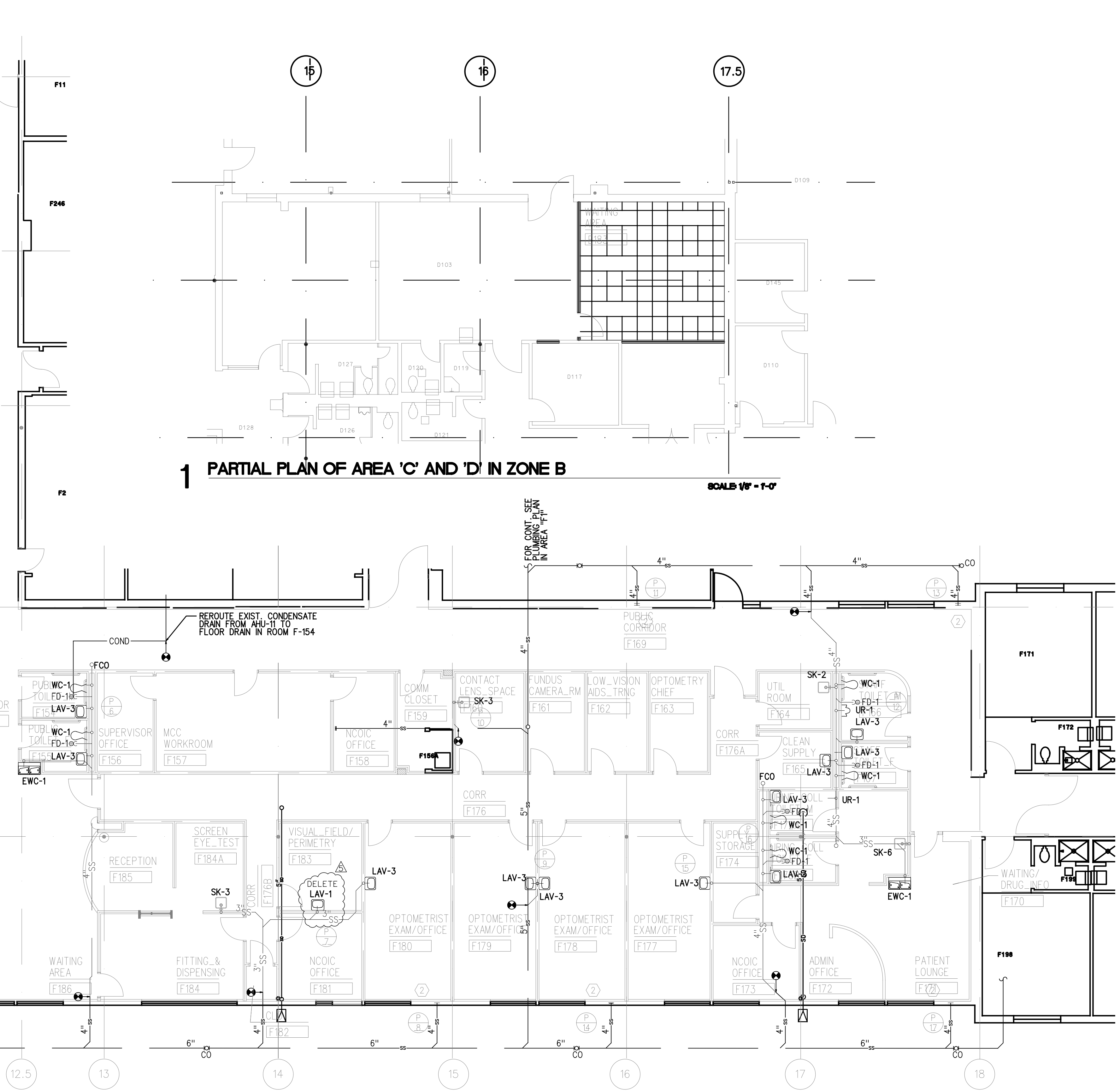
**ZONE A
WASTE & VENT PLAN
AS-BUILT**

SHEET
REFERENCE
NUMBER:
P1.11
SHEET X OF XX



2 ZONE A PLAN

- PLAN NOTES**
- NEW ROOF DRAIN IN THE PENTHOUSE. RUN 2" DRAIN PIPE & VENT THROUGH ROOF.
 - CAP OFF SANITARY PIPE.
 - FOR VENT THRU ROOF SEE WASTE & VENT RISER DIAGRAM P1.13.
 - EYE WASH TO BE INSTALLED ABOVE LAV-3. PROVIDE AN EXTRA HOLE ON LAV-3 FOR CONNECTION.
 - RELOCATE SINK LAV-3 AS SHOWN. INSTALL SANITARY AND VENT PIPES.



1 PARTIAL PLAN OF AREA 'C' AND 'D' IN ZONE B

PROJECT RENOVATE CLINIC BUILDING 1090
LITTLE ROCK AFB, ARKANSAS

DRAWING TITLE

DRAWING APPLIES TO
CONTRACT DOCUMENTS, SHEETS:

PROJ. NO. 02209800
DATE 9/27/04

DR. BY
CHK. BY

SUPPLEMENTAL
DRAWING NO.
SD-5

SHEET
OF

