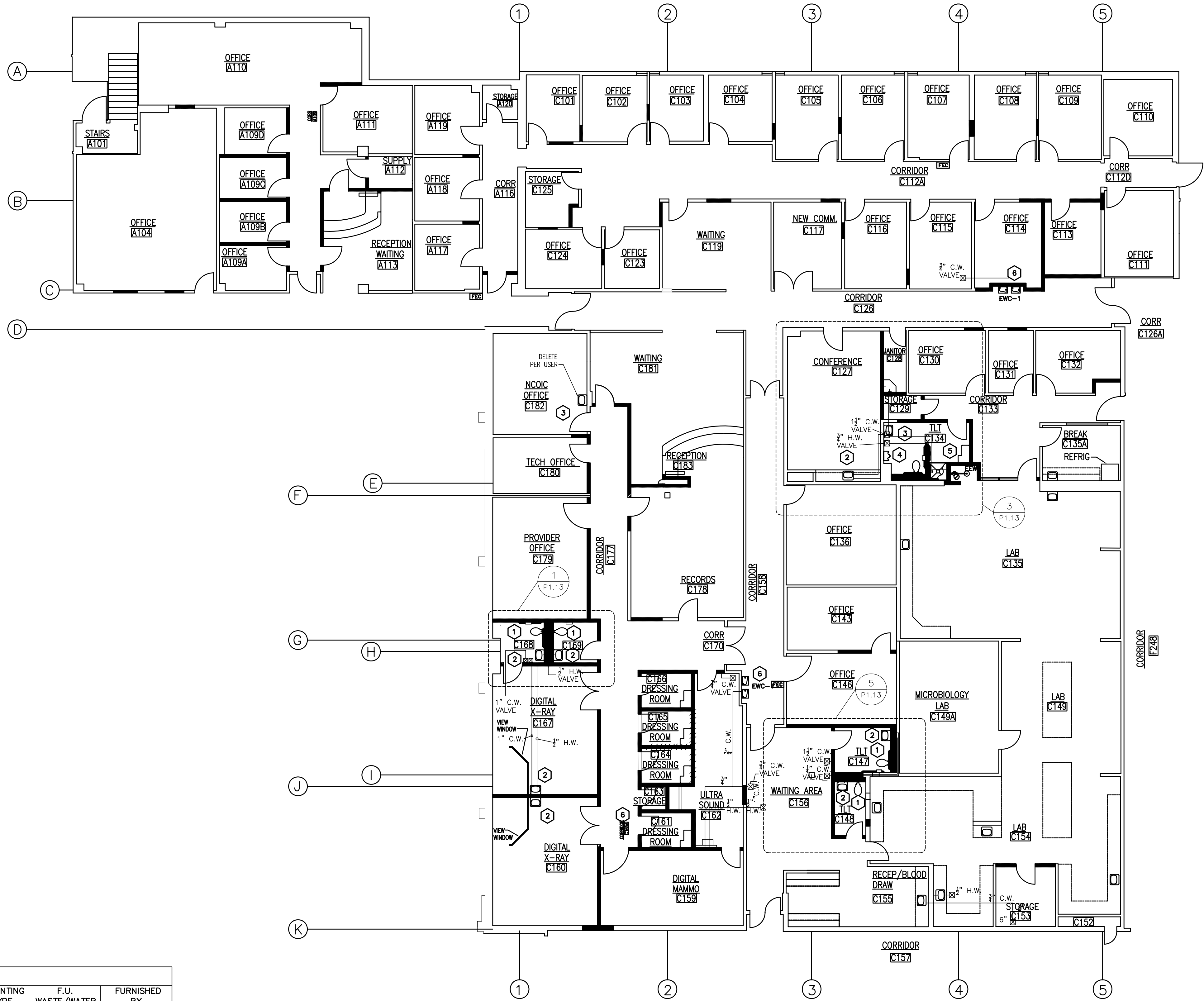




LITTLE ROCK A.F.B.
ARKANSAS



KEYED NOTES:

- 1 PROVIDE NEW WATER CLOSET, FLUSH VALVE, AND ALL ACCESSORIES ACCORDING TO PLUMBING FIXTURE SCHEDULE AND SPECIFICATION. CONNECT NEW PIPING TO EXISTING AS INDICATED ON THE ENLARGED PLUMBING PLAN AND THE SANITARY RISER DIAGRAM. LOCATION AND SIZES OF ALL EXISTING PIPING SHALL BE VERIFIED IN THE FIELD.
- 2 PROVIDE NEW LAVATORY, FAUCET, AND ALL ACCESSORIES ACCORDING TO PLUMBING FIXTURE SCHEDULE AND SPECIFICATION. CONNECT NEW PIPING TO EXISTING AS INDICATED ON THE ENLARGED PLUMBING PLAN AND THE SANITARY RISER DIAGRAM. LOCATION AND SIZES OF ALL EXISTING PIPING SHALL BE VERIFIED IN THE FIELD.
- 3 REPLACE EXISTING LAVATORY, FAUCET, EXPOSED PIPING, AND ALL ACCESSORIES WITH NEW ACCORDING TO PLUMBING FIXTURE SCHEDULE AND SPECIFICATION. CONNECT NEW PIPING TO EXISTING AS INDICATED ON THE ENLARGED PLUMBING PLAN AND THE SANITARY RISER DIAGRAM. SHUT-OFF ANGLE VALVES FOR 1/2" DOMESTIC CW & HW SHALL BE INSTALLED BELOW LAVATORY. LOCATION AND SIZES OF ALL EXISTING PIPING SHALL BE VERIFIED IN THE FIELD.
- 4 REPLACE EXISTING URINAL, FLUSH VALVE, EXPOSED PIPING, AND ALL ACCESSORIES WITH NEW ACCORDING TO PLUMBING FIXTURE SCHEDULE AND SPECIFICATION. CONNECT NEW PIPING TO EXISTING AS INDICATED ON THE ENLARGED PLUMBING PLAN AND THE SANITARY RISER DIAGRAM. LOCATION AND SIZES OF ALL EXISTING PIPING SHALL BE VERIFIED IN THE FIELD.
- 5 SHUT-OFF ANGLE VALVES FOR 1/2" DOMESTIC CW & HW SHALL BE INSTALLED BELOW LAVATORY. PROVIDE NEW ADA SHOWER STALL, MIXING VALVE, FLOOR DRAIN, AND ALL ACCESSORIES ACCORDING TO PLUMBING FIXTURE SCHEDULE AND SPECIFICATION. CONNECT NEW PIPING TO EXISTING AS INDICATED ON THE ENLARGED PLUMBING PLAN AND THE SANITARY RISER DIAGRAM. LOCATION AND SIZES OF ALL EXISTING PIPING SHALL BE VERIFIED IN THE FIELD.
- 6 REPLACE EXISTING WATER FOUNTAIN, EXPOSED PIPING, AND ALL ACCESSORIES WITH NEW ACCORDING TO PLUMBING FIXTURE SCHEDULE AND SPECIFICATION. CONNECT NEW PIPING TO EXISTING AS INDICATED ON THE ENLARGED PLUMBING PLAN AND THE SANITARY RISER DIAGRAM. LOCATION AND SIZES OF ALL EXISTING PIPING SHALL BE VERIFIED IN THE FIELD.

GENERAL NOTES:

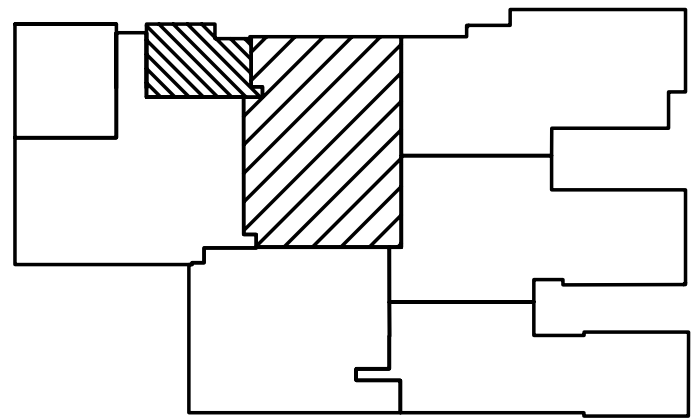
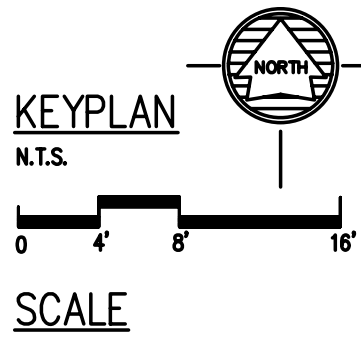
ALL WHEELCHAIR ACCESSIBLE LAVATORY P-TRAP AND ANGLE VALVE ASSEMBLIES SHALL BE COVERED WITH WHITE MOLDED, ANTIMICROBIAL UNDER SINK PIPE COVERS ("TRUEBRO" INC. OR APPROVED EQUAL). COVER SHALL HAVE INTERNAL TRIM FEATURE FOR SQUARE, CLEAN TRIMMING-INTERNAL RIBS-AND BUILT-IN CONCEALED FASTENERS (NO CABLE-TIE ALLOWED).

PLUMBING FIXTURE UNITS SCHEDULE										
TAG	JSN	NSN	DESCRIPTION	PLUMBING CONNECTIONS				MOUNTING TYPE	F.U. WASTE/WATER	FURNISHED BY
				CW	HW	SAN	V			
WC-1	P9050	4510	TOILET, WALL HUNG, SIPHON JET, 1.6 GALLONS PER FLUSH, TOP SPUD FLUSH VALVE, SEAT W/ OPEN FRONT & CHECK HINGE	1"	-	4"	2"	WALL	3 - PRIVATE 4 - PUBLIC	CONTRACTOR
UR-1	P8150	4510	URINAL, WALL HUNG, SIPHON JET FLUSHING 1 GALLON PER FLUSH VITREOUS CHINA, FLUSH VALVE	3/4"	-	2"	1-1/2"	WALL	2	CONTRACTOR
LAV-1	P3100	4510	LAVATORY, VITREOUS CHINA, W/CHICAGO FAUCET NO. 895-317GN2FCOP 1.60 GPM MAX FLOW RATE @ 60 PSI OR APPROVED EQUAL FAUCET AND TRAP	1/2"	1/2"	1-1/4"	1-1/2"	WALL	1	CONTRACTOR
SH-1			ADA SHOWER STALL "KOHLER" K12101-C, MIXING VALVE "KOHLER" K114642-4, "KOHLER" MASTER SHOWER KIT K-8520 OR APPROVED EQUAL	1/2"	1/2"	2"	1-1/2"			CONTRACTOR
EW-1	R2201	4110	WATER FOUNTAIN, CRS, 2-LEVEL, COMBINATION HANDICAP, 2-LEVEL DISPENSER.	1/2"	-	1 1/4"	1 1/4"	WALL	1/2	CONTRACTOR
MB-1	P4700	4510	MOP BASIN, MOLDED STONE, 10x36x24	1/2"	1/2"	3"	1-1/2"	FLOOR	2	CONTRACTOR
FD-1			FLOOR DRAIN - SEE SPECS	-	-	3"	1 1/2"		2	CONTRACTOR
FCO			FLOOR CLEANOUT - SEE SPECS	-	-	-	-			CONTRACTOR
WCO			WALL CLEANOUT - SEE SPECS	-	-	-	-			CONTRACTOR
EEW			COMBINATION EMERGENCY DRENCH SHOWER/ EYE WASH UNIT *	1 1/4"	-	2"	-	FLOOR		CONTRACTOR

* BASIS OF DESIGN "BRADLEY" (PHONE 1-800-BRADLEY) MODEL NUMBER S19-310JJ OR APPROVED EQUAL. PROVIDE 20 GPM FLOW CONTROL MODEL S19-866 OR APPROVED EQUAL.

SANITARY PLAN

SCALE: 1/8" = 1'-0"



AS BUILT

PROJECT TITLE
REPAIR MEDICAL CENTER PH 3
LITTLE ROCK AFB, ARKANSAS

SHEET TITLE
SANITARY PLAN
PLUMBING FIXTURES UNITS
SCHEDULE AND NOTES

PROJECT TITLE	REPAIR MEDICAL CENTER PH 3 LITTLE ROCK AFB, ARKANSAS
DESIGNED BY	MJG
TECH REVIEWER	AM
DATE	8-11-06
SCALE	1/8"=1'-0"
LEAD DESIGNER	AM
PROJECT NUMBER	NKAK 06-8001
SHEET	P1.12
	26 OF 37