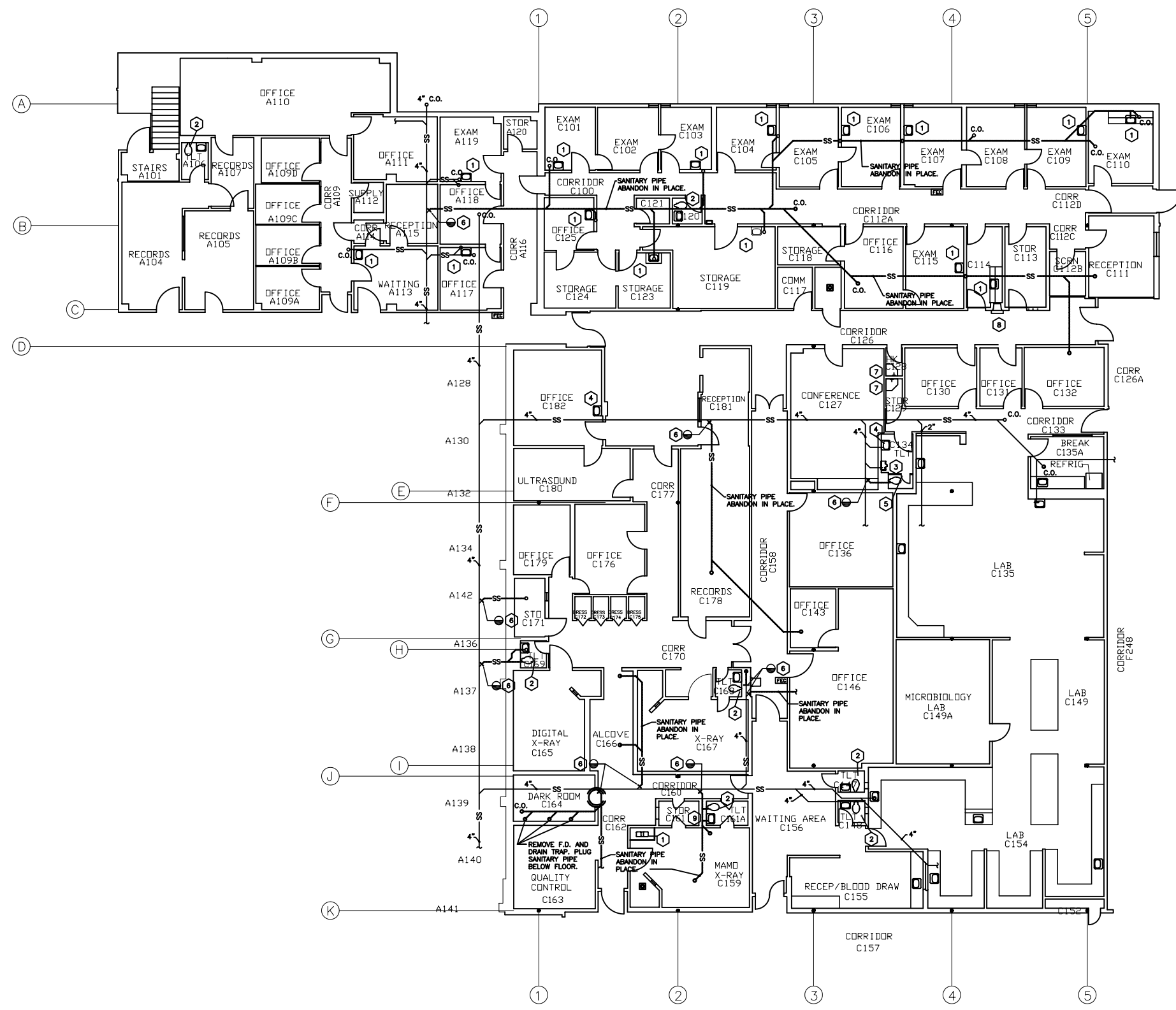




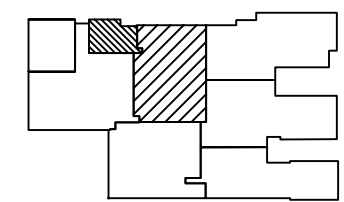
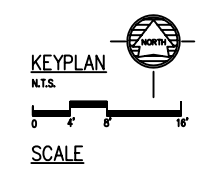
LITTLE ROCK A.F.B.
ARKANSAS

KEYED NOTES:

- 1 REMOVE EXISTING LAVATORY FAUCET AND ALL ACCESSORIES. REMOVE SANITARY PIPE AND PLUG IT BELOW FLOOR. REMOVE VENT PIPE AND PLUG IT ABOVE THE CEILING AND IN OPEN AIR IF VENT PIPE BECOMES INACTIVE. REMOVE CW & HW PIPING BACK TO MAIN AND CAP THESE ABOVE CEILING.
- 2 REMOVE EXISTING WATER CLOSET, FLUSH VALVE LAVATORY FAUCET AND ALL ACCESSORIES. REMOVE SANITARY PIPE BACK TO MAIN TO PREVENT DEAD ENDS AND PLUG IT. REMOVE VENT PIPE AND PLUG IT ABOVE THE CEILING AND IN OPEN AIR IF VENT PIPE BECOMES INACTIVE. REMOVE CW & HW PIPING BACK TO MAIN AND CAP THESE ABOVE CEILING.
- 3 EXISTING URINAL, FLUSH VALVE, EXPOSED PIPING AND ALL ACCESSORIES SHALL BE REPLACED WITH NEW ACCORDING TO PLUMBING FIXTURE SCHEDULE AND SPECIFICATION.
- 4 EXISTING LAVATORY, FAUCET, EXPOSED PIPING, AND ALL ACCESSORIES SHALL BE REPLACED WITH NEW ACCORDING TO PLUMBING FIXTURE SCHEDULE AND SPECIFICATION.
- 5 REMOVE EXISTING WATER CLOSET, FLUSH VALVE, AND ALL ACCESSORIES. REMOVE SANITARY PIPE BACK TO MAIN TO PREVENT DEAD ENDS AND PLUG IT. REMOVE VENT PIPE AND PLUG IT ABOVE THE CEILING AND IN OPEN AIR IF VENT PIPE BECOMES INACTIVE. REMOVE CW & HW PIPING BACK TO MAIN AND CAP THESE ABOVE CEILING.
- 6 AT THE POINT OF DISCONNECTION PLUG THE ENDS OF THE ABANDONED IN PLACE SANITARY PIPE AND THE ACTIVE SANITARY PIPE TO PREVENT DEAD ENDS.
- 7 REMOVE EXISTING MOP BASIN, FAUCET, AND ALL ACCESSORIES. REMOVE SANITARY PIPE BACK TO MAIN TO PREVENT DEAD ENDS AND PLUG IT. REMOVE VENT PIPE AND PLUG IT ABOVE THE CEILING AND IN OPEN AIR IF VENT PIPE BECOMES INACTIVE. REMOVE CW & HW PIPING BACK TO MAIN AND CAP THESE ABOVE CEILING.
- 8 EXISTING WATER FOUNTAIN, EXPOSED PIPING, AND ALL ACCESSORIES SHALL BE REPLACED WITH NEW ACCORDING TO PLUMBING FIXTURE SCHEDULE AND SPECIFICATION.
- 9 REMOVE EXISTING CW PIPE, 2" RP2 AND ASSOCIATED BALL VALVES, LOCATED IN ROOM C161, PREVIOUSLY INSTALLED FOR X-RAY FILM PROCESSORS. CAP EXISTING CW PIPE ABOVE CEILING BACK TO MAIN. RP2 AND ASSOCIATED BALL VALVES SHALL BE RETURNED TO GOVERNMENT.



SANITARY DEMOLITION PLAN
SCALE: 1/8" = 1'-0"



PROJECT TITLE		SHEET TITLE	
REPAIR MEDICAL CENTER PH 3 LITTLE ROCK AFB, ARKANSAS		SANITARY DEMOLITION PLAN	
DRAWN BY	MJG	LEAD DESIGNER	AM
TECH REVIEWER	AM	PROJECT NUMBER	NKAK 06-8001
DESIGNED BY	OD	SHEET	P1.11
DATE	8-11-06		
SCALE	1/8"=1'-0"		25 of 37