



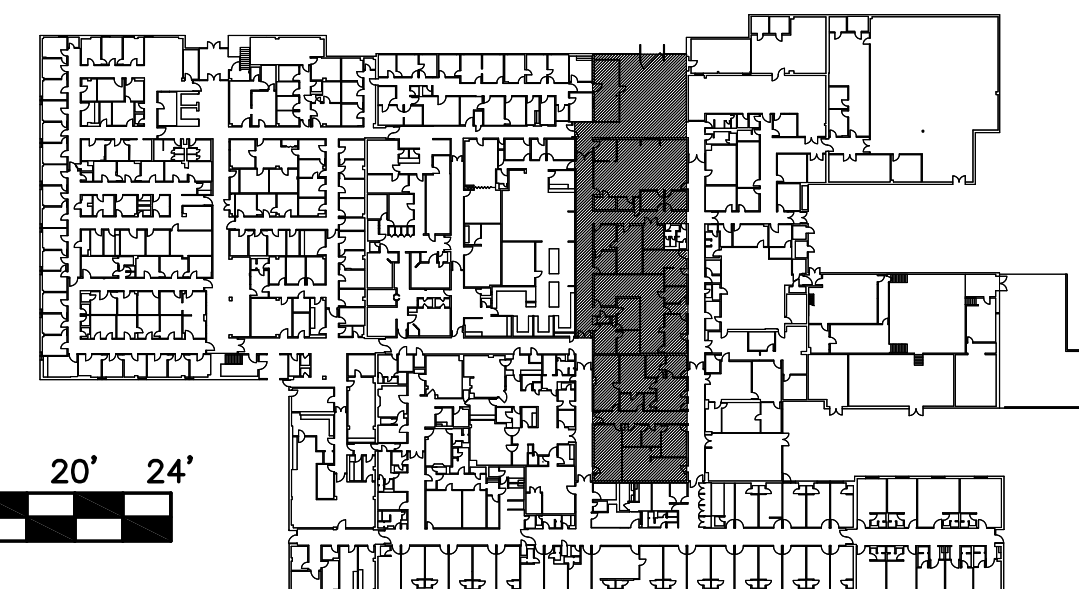
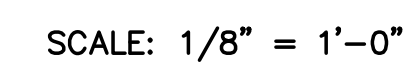
1. THE CONTRACTOR SHALL FURNISH AND INSTALL ALL REQUIRED PIPE, FITTING, VALVES, HANGERS, SUPPORTS, SLEEVES, INSERTS, TRAPS AND OTHER SUCH EQUIPMENT, ITEMS AND DEVICES, AS MAY BE REQUIRED FOR A COMPLETE AND OPERATING SYSTEM OR SYSTEMS, INCLUDING ALL POINTS AUXILIARY TO THE SYSTEM OR SYSTEMS WHETHER OR NOT SPECIFICALLY SET FORTH HEREIN AND/OR SHOWN ON THE DRAWINGS.
2. WORK SHALL BE EXECUTED AND INSPECTED IN ACCORDANCE WITH LOCAL AND STATE CODES, LAWS, ORDINANCES, RULES AND REGULATIONS APPLICABLE TO THE PARTICULAR CLASS OF WORK AND ANY FEES IN CONNECTION THEREWITH SHALL BE PAID BY THE CONTRACTOR.
3. BEFORE SUBMITTING HIS BID, THE CONTRACTOR SHALL VISIT THE SITE OR THE PROPOSED PROJECT AND SATISFY HIMSELF AS TO THE CONDITIONS UNDER WHICH HE WOULD OPERATE RELATING TO HIS WORK.
4. THE CONTRACTOR SHALL BE RESPONSIBLE FOR ALL CUTTING, PATCHING AND PAINTING REQUIRED BY THIS WORK AND SHALL COORDINATE THE EXECUTION OF SUCH WORK.
5. THE CONTRACTOR SHALL ARRANGE WITH THE PROPER AUTHORITIES AND UTILITY COMPANIES FOR SERVICE CONNECTIONS. VERIFY LOCATIONS AND SIZES BEFORE STARTING WORK. PAY ALL COSTS REQUIRED BY THE UTILITY COMPANY.
6. ALL PLUMBING SHALL BE INSTALLED IN ACCORDANCE WITH THE ARKANSAS STATE PLUMBING CODE AND IN COMPLIANCE WITH THE REQUIREMENTS OF THE LOCAL AUTHORITY.
7. ALL ABOVE GRADE WATER PIPE SHALL BE TYPE "L" HARD DRAWN COPPER WITH SOLDER TYPE FITTING. WATER PIPE BELOW SLAB SHALL BE TYPE "K" DRAWN COPPER; NO JOINTS BELOW SLAB.
8. COPPER PIPE SHALL BE ASSEMBLED WITH WROUGHT COPPER FITTING USING LEAD FREE SOLDER. PIPING SHALL BE TESTED AS PER PLUMBING CODE.
9. INSULATE ALL HOT AND COLD WATER PIPING.
10. INSULATE EXPOSED TRAPS AND HOT WATER SUPPLIES FOR ADA COMPLIANCE.
11. REMOVE ALL DEMOLISHED ITEMS; DO NOT ABANDON IN PLACE.

- 1 REMOVE EXISTING WATER CLOSET AND 2" VENT PIPING. SAW CUT SLAB AND INSTALL NEW FLOOR CLEANOUT IN PLACE OF WATER CLOSET. REMOVE WATER BRANCH PIPE AND CAP AT MAIN.
- 2 REMOVE EXISTING LAVATORY AND VENT PIPING. CAP DRAIN BELOW SLAB AND REPAIR SLAB. REMOVE BRANCH WATER PIPES AND CAP AT MAIN.
- 3 SAW CUT SLAB FOR NEW SUMP PUMP INSTALLATION. REFER TO P-201.
- 4 REMOVE STEAM PIPING. INSULATION CONTAINS ASBESTOS.
- 5 SAW CUT SLAB FOR PLUMBING CONNECTION. REFER TO P-201.
- 6 REMOVE SINK FOR REPLACEMENT.
- 7 REMOVE SERVICE SINK FOR REPLACEMENT.

1. ALL BRANCH PIPING ABANDONED BY THE REMOVAL OF FIXTURES SHALL BE REMOVED BACK TO THE NEAREST MAIN. DO NOT ABANDON IN PLACE.
2. CAP ALL VENTS THRU ROOF THAT ARE MADE OBSOLETE BY REMOVAL OF PLUMBING FIXTURES.



— HW — HOT WATER  
 — CW — COLD WATER  
 — SS — SANITARY SEWER  
 ⊕ POINT OF CONNECTION  
 (NEW TO EXISTING)



2 PLUMBING DEMOLITION PARTIAL PLAN  
P-101 SCALE: 1/8" = 1'-0"

A circular professional engineer seal for the State of Arkansas. The outer ring contains the text "STATE OF ARKANSAS" at the top and "JOEL FUNKHOUSER" at the bottom. Inside the ring, the text "REGISTERED PROFESSIONAL ENGINEER" is centered, with "No. 11828" below it. Three stars are positioned above and below the central text.[illegible]

# PLUMBING DEMOLITION PLAN

DRAWN BY <b>BMS</b>	LEAD DESIGNER <b>JCF</b>
TECH REVIEWER <b>JCF</b>	PROJECT NUMBER <b>NKAK 06-8006 4A</b>
DESIGNED BY <b>JCF</b>	SHEET  <b>P-101</b>
DATE <b>13 MAY 2009</b>	
SCALE <b>AS SHOWN</b>	<b>34 of 51</b>