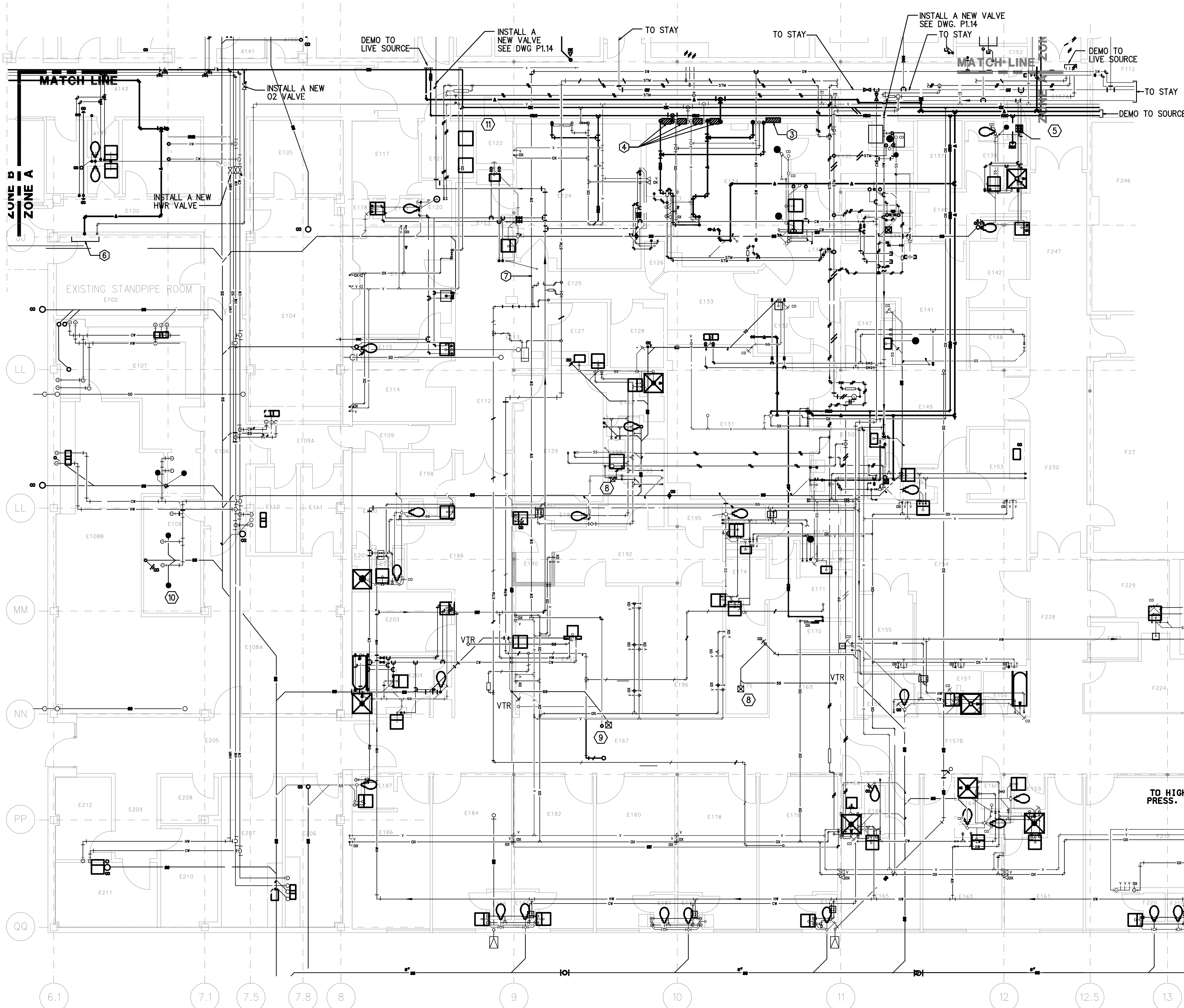


REVISIONS	DATE	DESCRIPTION	APPROVED	SYMBOL	AMENDMENT	DESCRIPTION	DATE	APPROVED
1	8/07/2005	ISSUED FOR FINAL WORK PLAN						
2	10/17/2003	ISSUED FOR BID						
3								
4								
5								
6								
7								
8								
9								
10								
11								
12								
13								
14								
15								
16								
17								
18								
19								
20								
21								
22								
23								
24								
25								
26								
27								
28								
29								
30								
31								
32								
33								
34								
35								
36								
37								
38								
39								
40								
41								
42								
43								
44								
45								
46								
47								
48								
49								
50								
51								
52								
53								
54								
55								
56								
57								
58								
59								
60								
61								
62								
63								
64								
65								
66								
67								
68								
69								
70								
71								
72								
73								
74								
75								
76								
77								
78								
79								
80								
81								
82								
83								
84								
85								
86								
87								
88								
89								
90								
91								
92								
93								
94								
95								
96								
97								
98								
99								
100								

DESIGNED BY: DATE: 08/04/2003	PROJECT NO: 6503	CHECKED BY: R.H.	REVIEWED BY: SOLUTION NUMBER:
DRAWN BY: C.S.	DRAWING CODE: 6503		
U.S. ARMY ENGINEERING AND SUPPORT CENTER	CORPS OF ENGINEERS	HUNTSVILLE, ALABAMA	
EARTHTECH	FLM		

RENOVATE CLINIC  
BUILDING 1090  
LITTLE ROCK AFB, ARKANSAS  
**ZONE A  
DEMOLITION PLAN  
AS-BUILT**

SHEET  
REFERENCE  
NUMBER:  
**P0.11**  
SHEET X OF XX



## 2 ZONE A PLAN

SCALE 1/8\"/>

### GENERAL DEMOLITION NOTES.

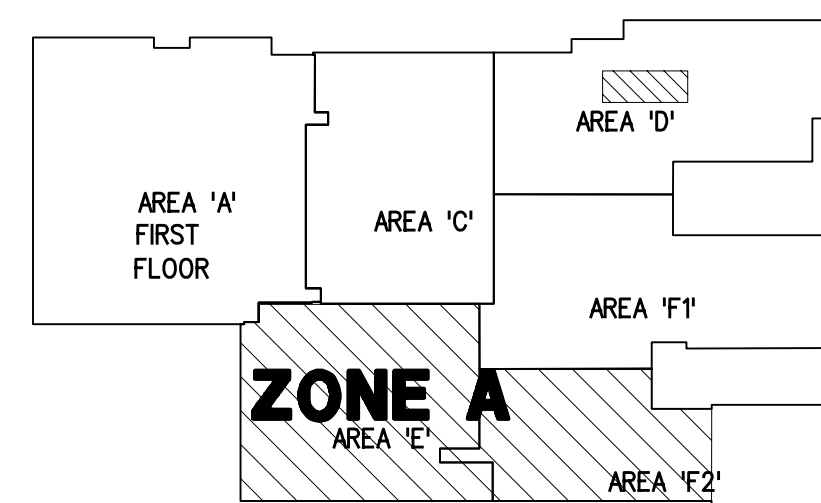
- THE CONTRACTOR SHALL REMOVE ALL PLUMBING FIXTURES, TRIM, CARRIERS, SUPPLIES, PIPING, VALVES, EQUIPMENT, ETC. THAT IS OBSOLETE DUE TO CHANGES IN THE BUILDING UNLESS OTHERWISE NOTED.
- INFORMATION REGARDING THE EXISTING PLUMBING SYSTEMS HAS BEEN TAKEN FROM PLUMBING DRAWINGS PROVIDED BY THE GOVERNMENT. THE CONTRACTOR SHALL OBTAIN COPIES OF THESE DRAWINGS TO USE AS ADDITIONAL GUIDANCE AND CLARIFICATION FOR DEMOLITION DURING THE PROJECT.
- WHERE EXISTING CONDITIONS ARE SHOWN, THEY HAVE BEEN DERIVED FROM AVAILABLE DRAWINGS AND REPRESENT THE ENGINEER'S BEST ESTIMATE OF ACTUAL CONDITIONS BUT HAVE NOT IN ALL CASES BEEN VERIFIED BY FIELD INVESTIGATION.
- THE CONTRACTOR SHALL NOT ASSUME THAT EXISTING CONDITIONS SHOWN ON THE DRAWINGS ARE COMPLETE AND ACCURATE REPRESENTATIONS OF THE EXISTING PLUMBING SYSTEMS. THE CONTRACTOR SHALL VISIT THE JOB SITE AND BECOME FAMILIAR WITH THE SITE CONDITIONS BEFORE SUBMITTING A BID. ANY ADDITIONAL WORK CAUSED DUE TO LACK OF KNOWLEDGE OF EXISTING SYSTEMS SHALL BE DONE AT NO ADDITIONAL EXPENSE TO THE GOVERNMENT.
- REMOVE SELECT APPLICABLE DOMESTIC COLD & HOT WATER PIPING BACK TO ACTIVE MAINS THAT WILL NOT BE DEMOLISHED. PROVIDE SHUTOFF VALVES IF NONE EXIST AND CAP AS CLOSE AS POSSIBLE TO THE MAIN.
- REMOVE ALL APPLICABLE SANITARY VENT PIPING TO WHERE IT CONNECTS TO ACTIVE VENT MAINS THAT WILL NOT BE DEMOLISHED. CAP ANY REMAINING PIPE OPENINGS AS CLOSE AS POSSIBLE TO THE MAIN.
- REMOVE ALL APPLICABLE DRAIN PIPING BACK TO A POINT WHERE IT CONNECTS TO ACTIVE MAINS THAT WILL NOT BE DEMOLISHED. CAP ANY REMAINING PIPE OPENINGS AS CLOSE AS POSSIBLE TO THE MAIN. FOR SLAB ON GRADE, CAP SANITARY PIPE BELOW FLOOR AND PATCH FLUSH WITH SURFACE.
- REMOVE ALL APPLICABLE MEDICAL GAS AND VACUUM PIPING BACK TO THE POINT WHERE IT CONNECTS TO MAINS OR BRANCH LINES THAT WILL NOT BE DEMOLISHED. CAP ANY REMAINING OPENINGS AS CLOSE AS POSSIBLE TO THE MAIN OR BRANCH LINE.
- AFTER THE DEMOLITION PROCESS IS COMPLETE, NO DEAD-END SANITARY PIPING CAN REMAIN.
- ALL BUILDING SYSTEMS SERVING OCCUPIED AREAS OF THE EXISTING FACILITY SHALL REMAIN FULLY OPERATIONAL. THE CONTRACTOR SHALL PROTECT AND MAINTAIN THESE SYSTEMS PASSING THROUGH AND ADJACENT TO THE AREAS REQUIRING DEMOLITION WORK. WORK THAT REQUIRES DISRUPTION OF THE GOVERNMENT'S OPERATIONS SHALL BE PERFORMED DURING HOURS, INCLUDING EVENINGS AND WEEKENDS, WHICH MINIMIZE INTERRUPTION TO THE OCCUPANTS OF THE BUILDING. THE TIMES AND DURATION OF THIS WORK MUST BE CAREFULLY COORDINATED WITH THE GOVERNMENT AT LEAST TWO WEEKS IN ADVANCE. WHERE NECESSARY, CONTRACTOR SHALL REROUTE EXISTING UTILITIES TO SERVE OCCUPIED AREAS OR TO COORDINATE WITH NEW WORK.
- SEE SLAB DETAIL 6 ON DWG P1.17

### PLAN NOTES

- REMOVE EXISTING CONDENSATE LINE UP TO THE POINT SHOWN, AND REROUTE TO FLOOR DRAIN AS SHOWN ON P1.11.
- REMOVE OXYGEN VALVES & BOX & ASSOCIATED PIPING & ACCESSORIES.
- REMOVE MED GAS ALARM AND ASSOCIATED PIPING & ACCESSORIES.
- REMOVE ZONE VALVES & BOX & ASSOCIATED PIPING & ACCESSORIES.
- REMOVE NITROUS OXIDE CLOSET AND MANFOLD. DEMO PIPE TO ACTIVE SOURCE.
- REMOVE OXYGEN, COMPRESSED AIR AND ORAL VACUUM ALARMS AND ASSOCIATED PIPING.
- REMOVE HUMIDIFIER AND ASSOCIATED PIPING AND ACCESSORIES.
- EXISTING PENTHOUSE DRAINS & PIPING & VENTS TO BE MODIFIED AND ROUTED AS NECESSARY.
- REMOVE THIS PENTHOUSE DRAIN & ASSOCIATED PIPING & VENT & SEAL & PATCH THE OPENING PER SPEC.
- REMOVE EXISTING ETO AND STEAM STERILIZERS AND TURN THEM OVER TO BASE CO. ALSO REMOVE ASSOCIATED STEAM PIPES AND ACCESSORIES ALL THE WAY, AND REMOVE WATER LINE TO SOURCE.
- INSTALL A NEW 1/2\"/>

### 1 PARTIAL PLAN OF AREA 'C' AND 'D' IN ZONE B

SCALE 1/8\"/>



KEY PLAN  
N.T.S.

SCALE